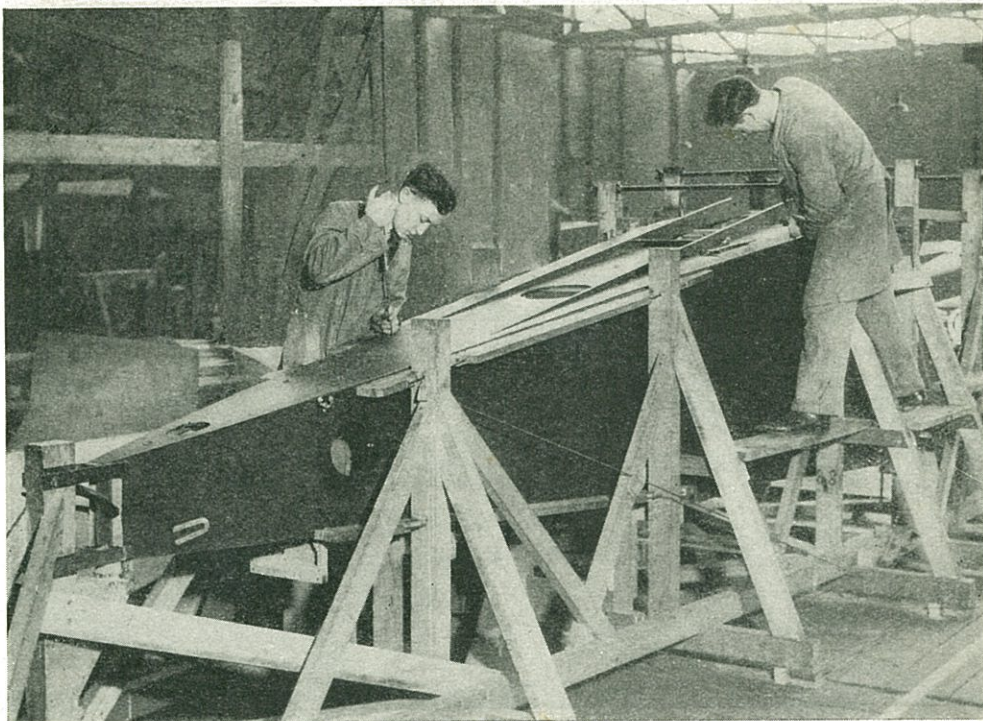
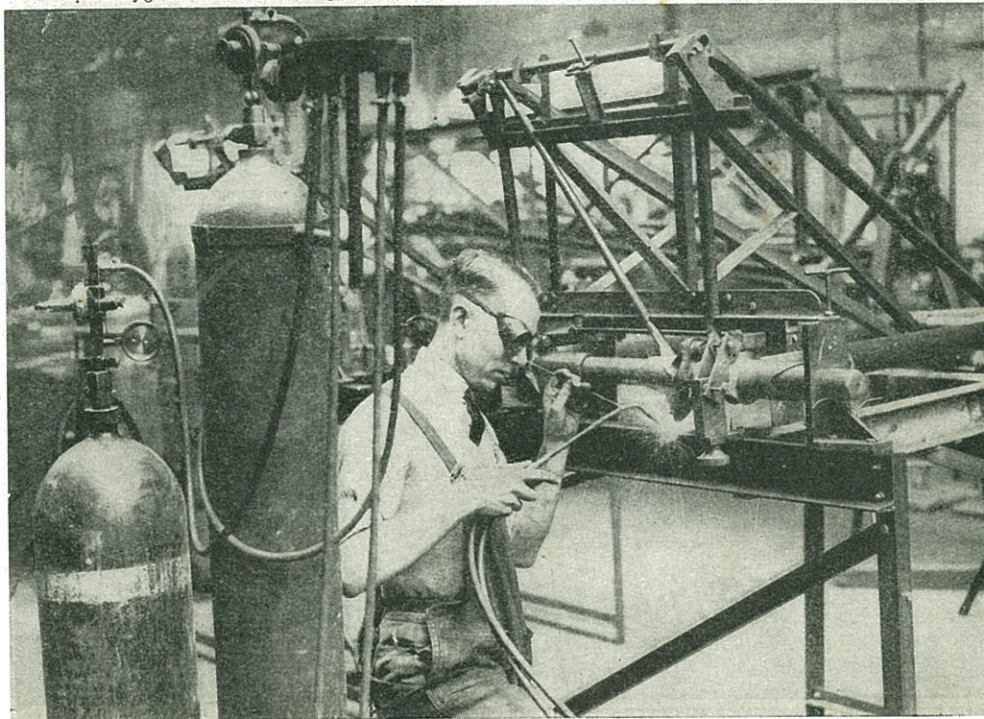


THE STEEL WELDER AND HIS BLOWER



Here is the fuselage of a Leopard Moth being built up on a jig. The sides and the top and bottom are constructed on separate jigs to ensure interchangeability, and they are then brought together on another jig as seen here.



Metal enters largely into the construction of aeroplanes today, and here we see a steel welder at work with his oxy-acetylene blower on an engine frame, or cradle, for one of the famous Comet machines. Before a new type of aeroplane is built about 3000 separate drawings are made, and about another thousand for its engine.