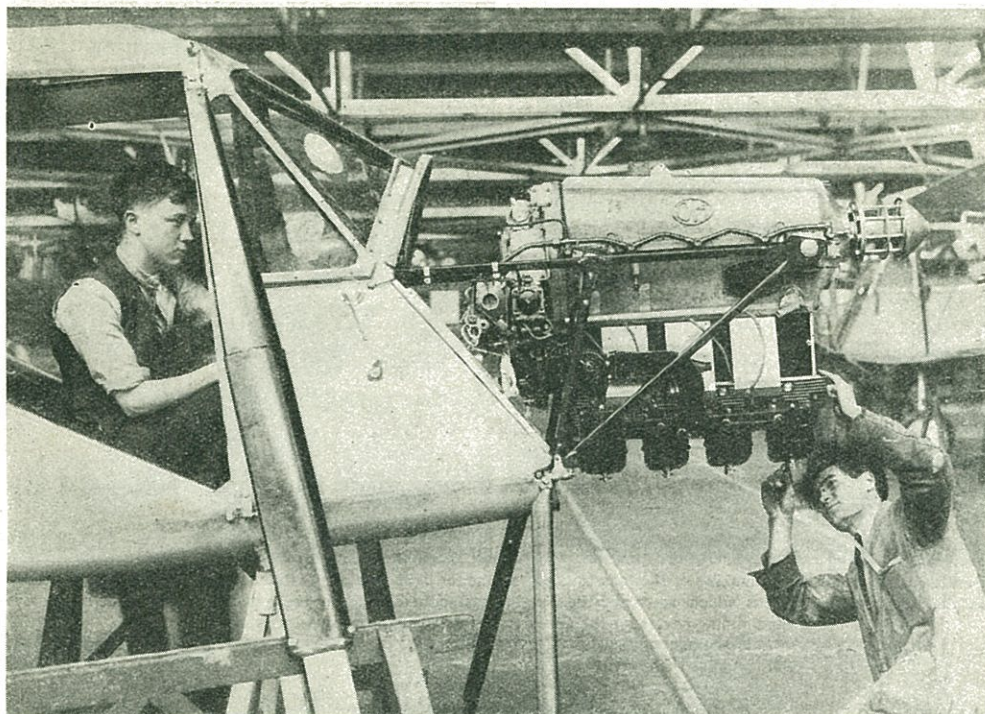
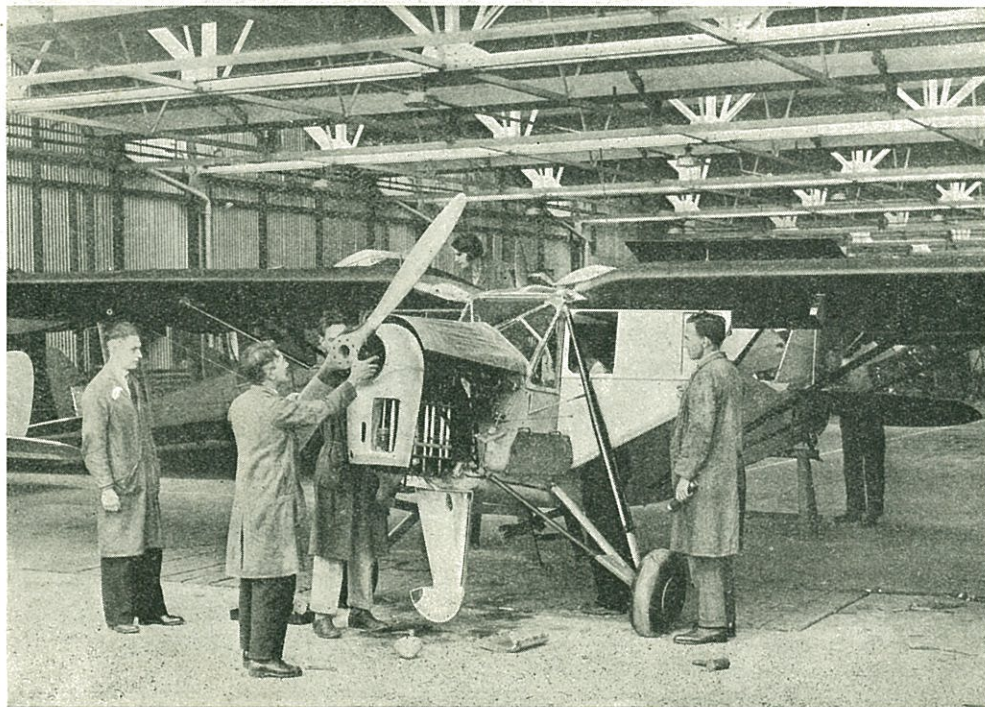


FIXING THE ENGINE IN THE PLANE



The plane and its engine at last come together, and this picture gives an excellent idea of how the motor is mounted in the nose of the machine. It will be noticed that in this type the engine is inverted, the cylinders being below the crankcase.



Various necessary adjustments having been made to the engine, it is next encased in its cowling, rather like the bonnet of a motor-car, and the propeller is placed in position. The machine at last looks like an aeroplane. These photographs taken in the works of the De Havilland Aircraft Co. are reproduced by courtesy of *Flight*, *Flying*, and others.