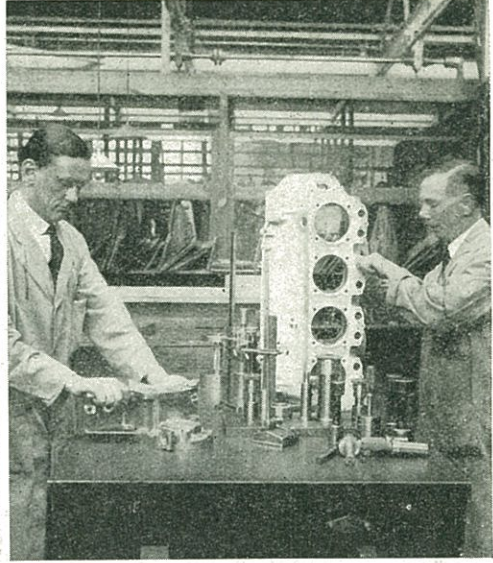
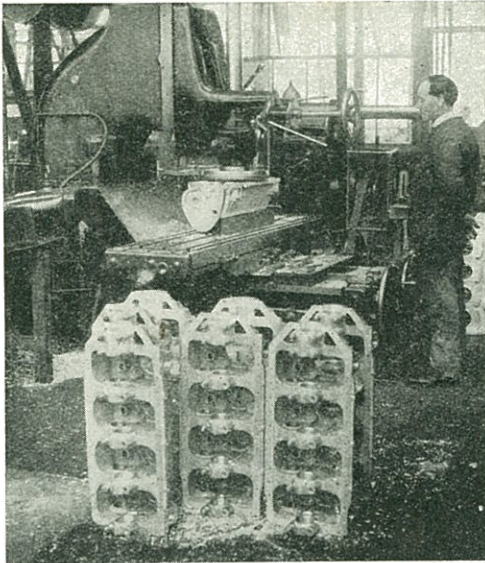
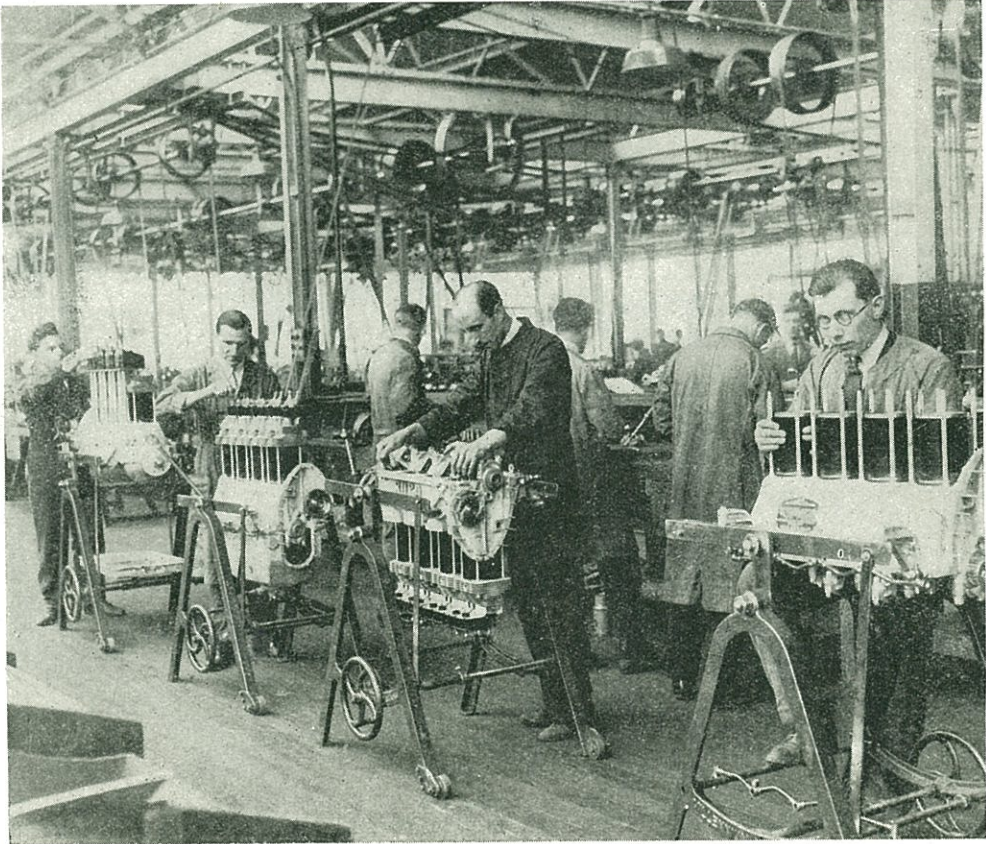


## MAKING THE ENGINES FOR LIGHT PLANES



Here are some peeps at the making of the famous Gipsy engine for light planes. In the background of the picture seen on the left is the apparatus which machines the roughly-cast crankcases. In the picture on the right crankcases and timing covers for the Gipsy engine are being inspected by experts.



In this picture of an assembly shop the engines can be seen in various stages as they grow under the skilled hands of the engineers. The motors seen are 100 and 120 horse-power models for light planes.