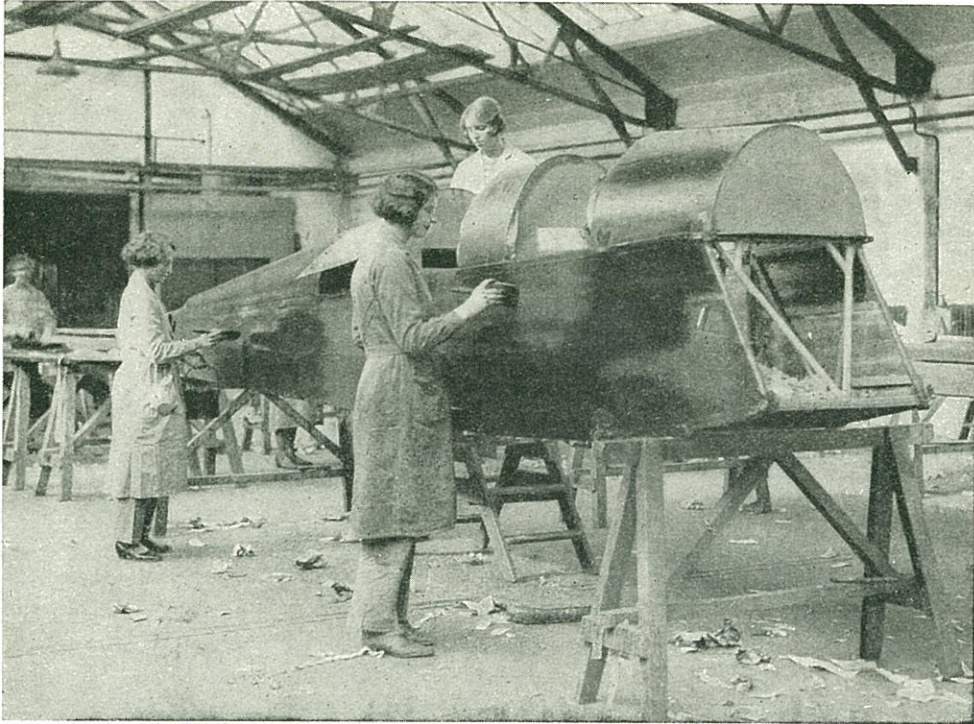
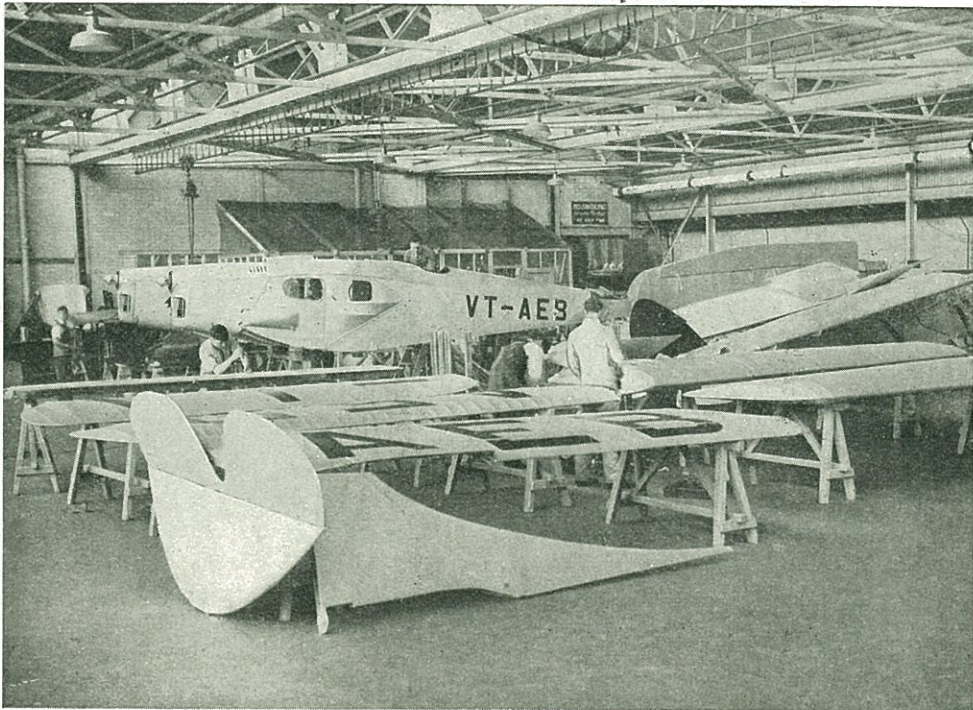


COVERING A MACHINE'S METAL FRAMEWORK



The fuselage, or body, of the Tiger Moth has a framework built up of tubular metal and it is covered with fabric. These girls are engaged in doping the fabric covering.



Here is a corner of the paint shop with a varied assembly of fuselages, wings, and other parts undergoing attention before being finally assembled. Some of the parts are seen to have received their registration markings. It is here that the aeroplanes are packed and shipped if they are not flown to the country to which they are destined to go.