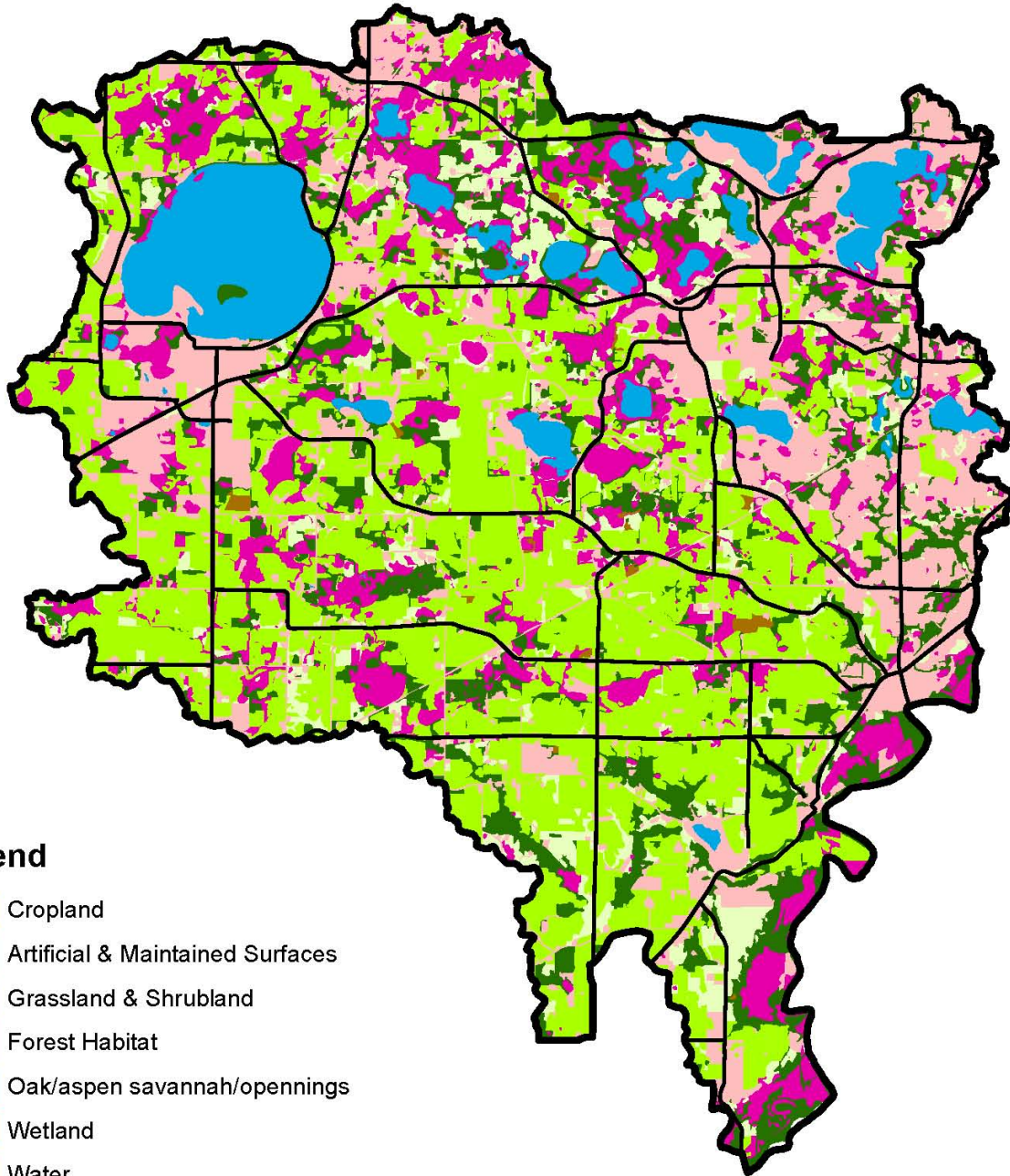


Map 1 - Existing Land Use Cover

Laketown Township Area

Data Source: Minnesota DNR - MIS Bureau 2003



Legend

-  Cropland
-  Artificial & Maintained Surfaces
-  Grassland & Shrubland
-  Forest Habitat
-  Oak/aspen savannah/openings
-  Wetland
-  Water



0 0.5 1 2 3 4 Miles

Park + Ridge Landscape Architecture

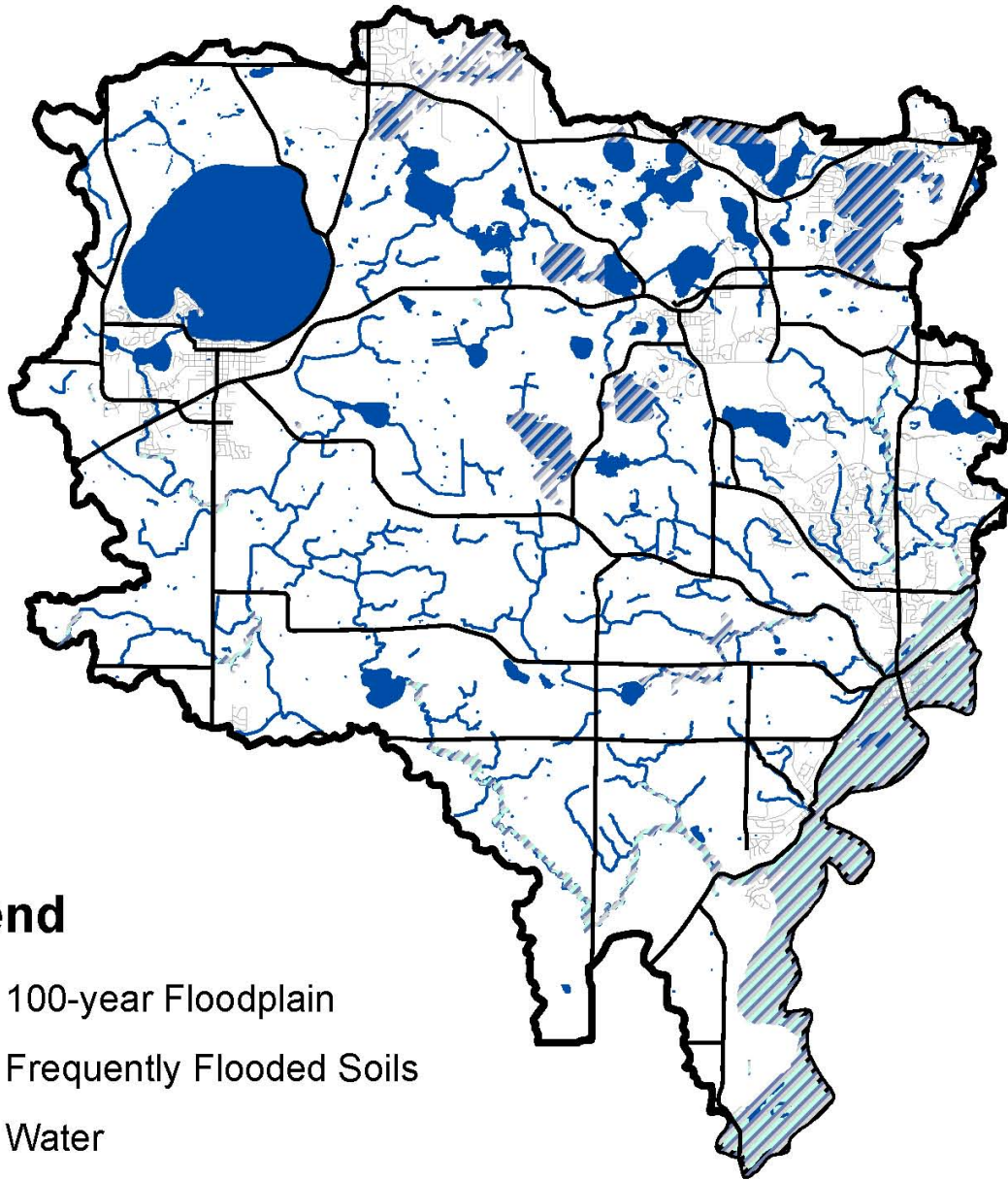
LA 3004 - Regional Landscape Planning

March 2, 2010 - Michael P Schumann


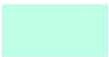


Map 2 - Base Hydrology

Laketown Township Area

Data Source: Minnesota DNR - MIS Bureau 2003



Legend

-  100-year Floodplain
-  Frequently Flooded Soils
-  Water
-  Streams



0 0.5 1 2 3 4 Miles

Park + Ridge Landscape Architecture

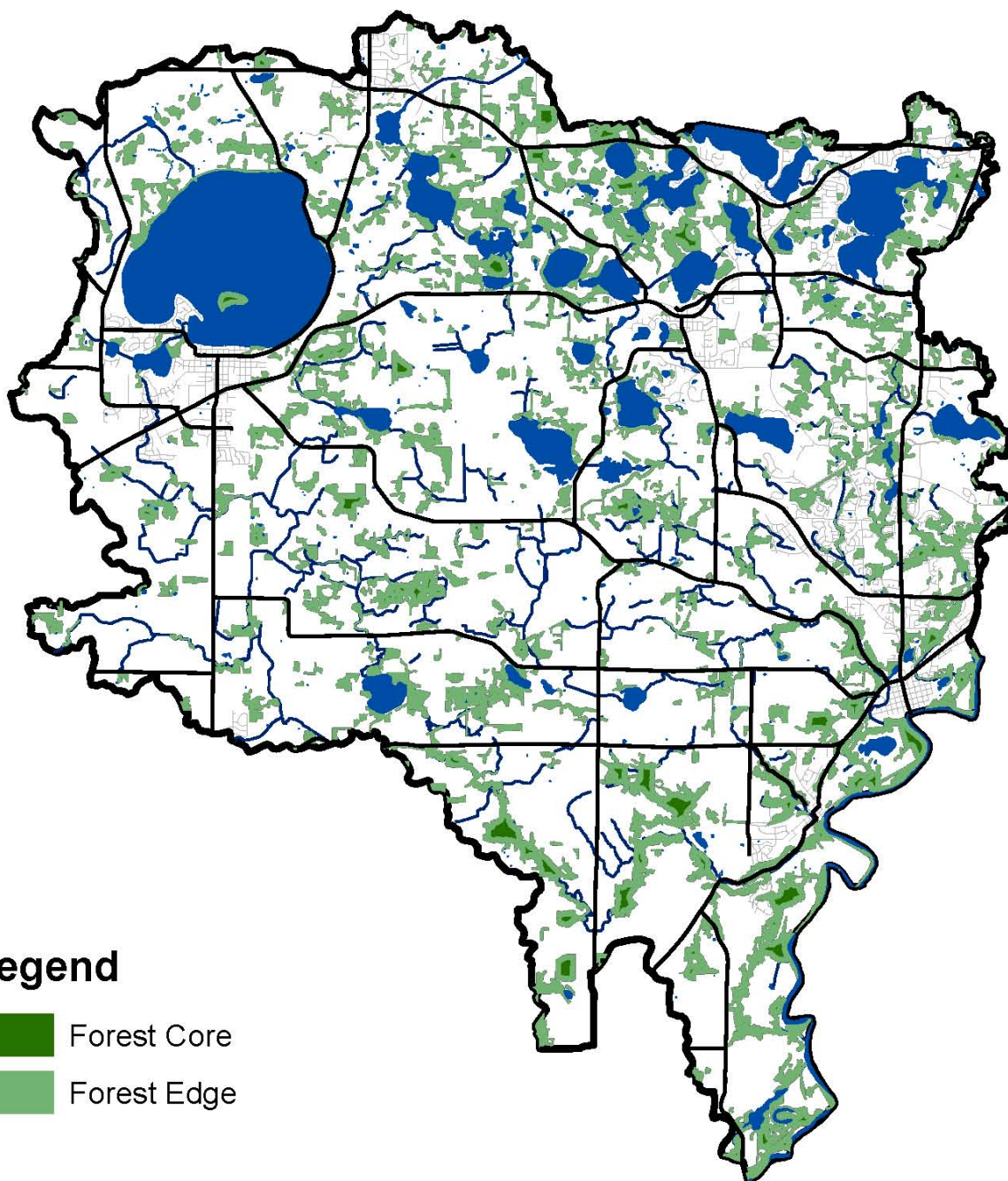
LA 3004 - Regional Landscape Planning

March 2, 2010 - Michael P Schumann

Map 3 - Forest Habitat Edge & Core - Existing

Laketown Township Area

Data Source: Minnesota DNR - MIS Bureau 2003



Legend

-  Forest Core
-  Forest Edge



0 0.5 1 2 3 4 Miles

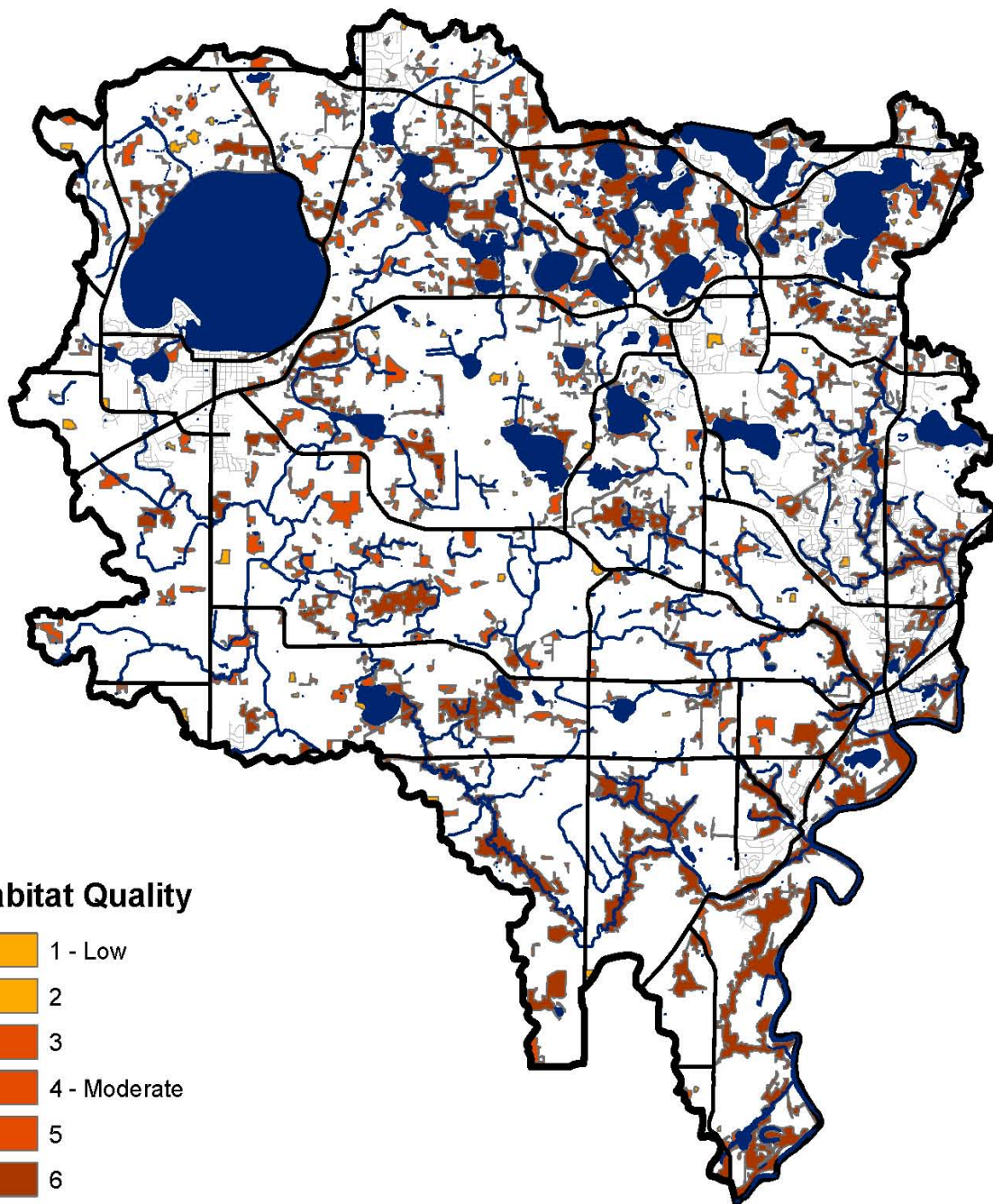
Park + Ridge Landscape Architecture
LA 3004 - Regional Landscape Planning

March 2, 2010 - Michael P Schumann

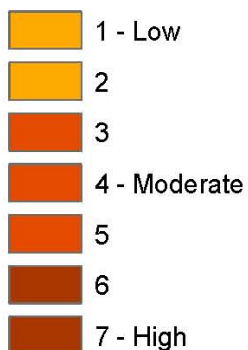
Map 4 - Forest Habitat Quality

Laketown Township Area

Data Source: Minnesota DNR - MIS Bureau 2003



Habitat Quality



Park + Ridge Landscape Architecture

LA 3004 - Regional Landscape Planning

March 2, 2010 - Michael P Schumann

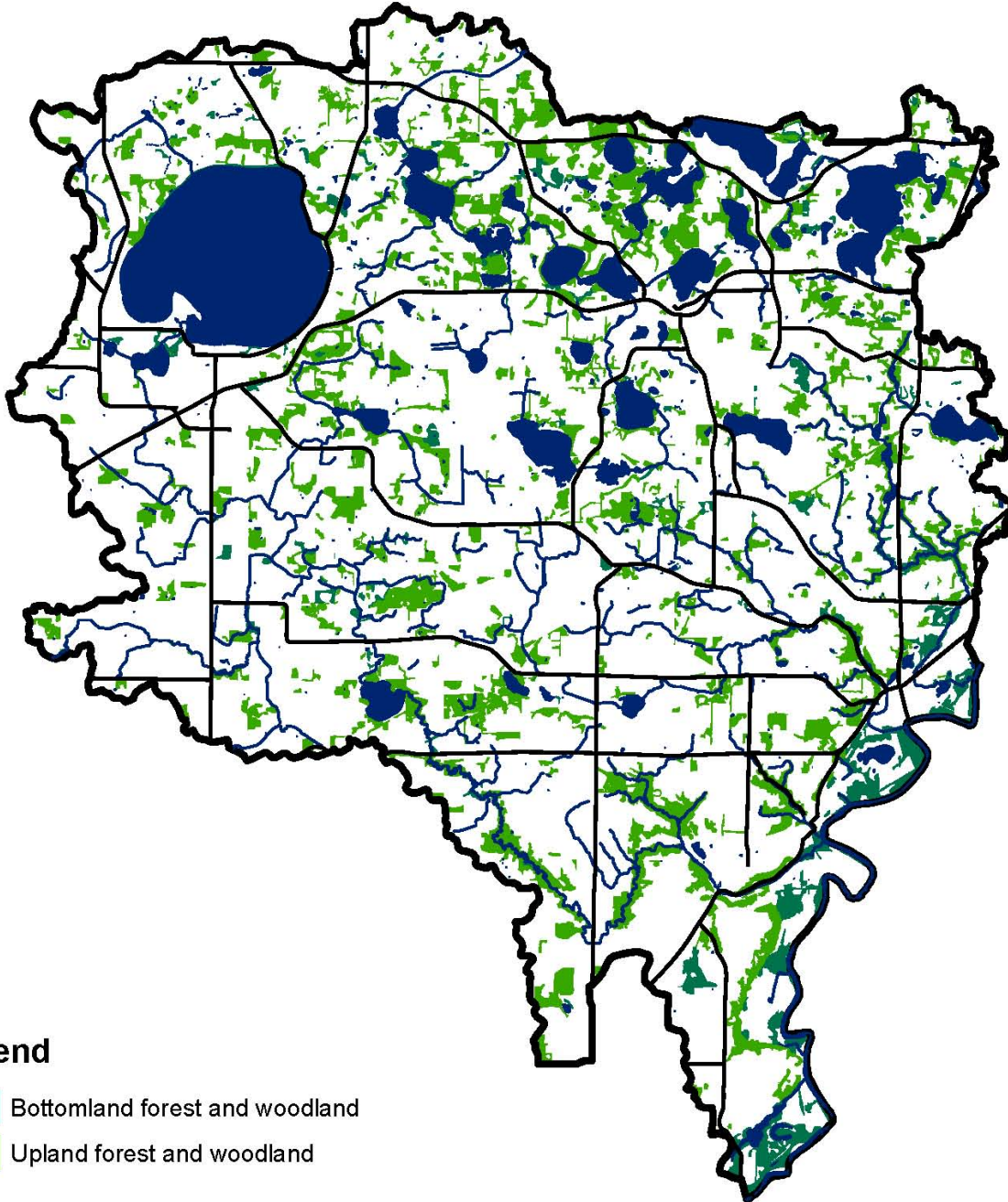


0 0.5 1 2 3 4 Miles



Map 5 - Forest Cover - Existing

Laketown Township Area

Data Source: Minnesota DNR - MIS Bureau 2003



Legend

-  Bottomland forest and woodland
-  Upland forest and woodland



0 0.5 1 2 3 4 Miles

Park + Ridge Landscape Architecture

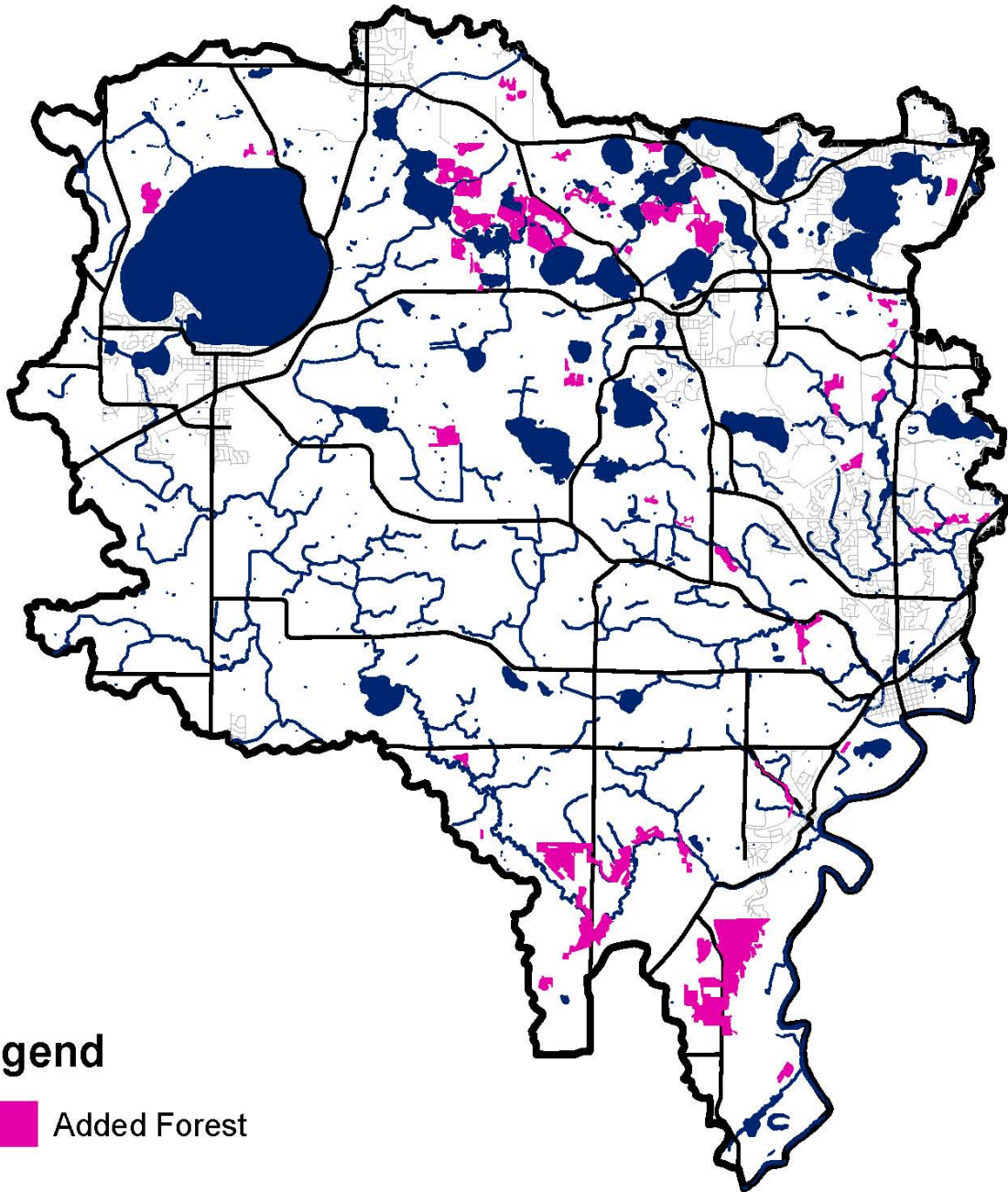
LA 3004 - Regional Landscape Planning

March 2, 2010 - Michael P Schumann

Map 6 - Proposed Reforestation Areas

Laketown Township Area

Data Source: Minnesota DNR - MIS Bureau 2003



Legend

 Added Forest



0 0.450.9 1.8 2.7 3.6
Miles

Park + Ridge Landscape Architecture

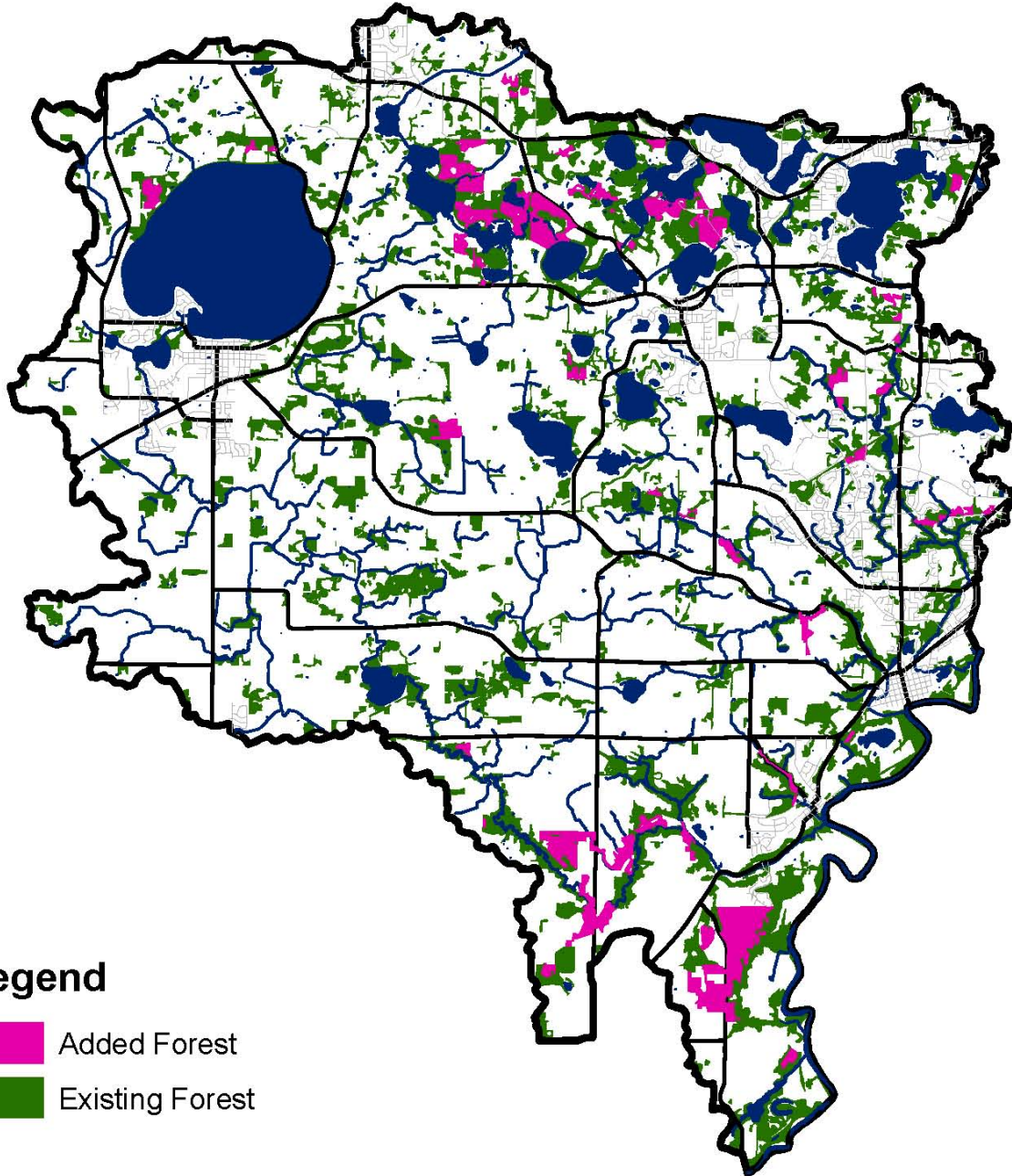
LA 3004 - Regional Landscape Planning

March 2, 2010 - Michael P Schumann



Map 7 - Existing Forest & Proposed Reforestation

Laketown Township Area

Data Source: Minnesota DNR - MIS Bureau 2003



Legend

-  Added Forest
-  Existing Forest

Park + Ridge Landscape Architecture

LA 3004 - Regional Landscape Planning

March 2, 2010 - Michael P Schumann

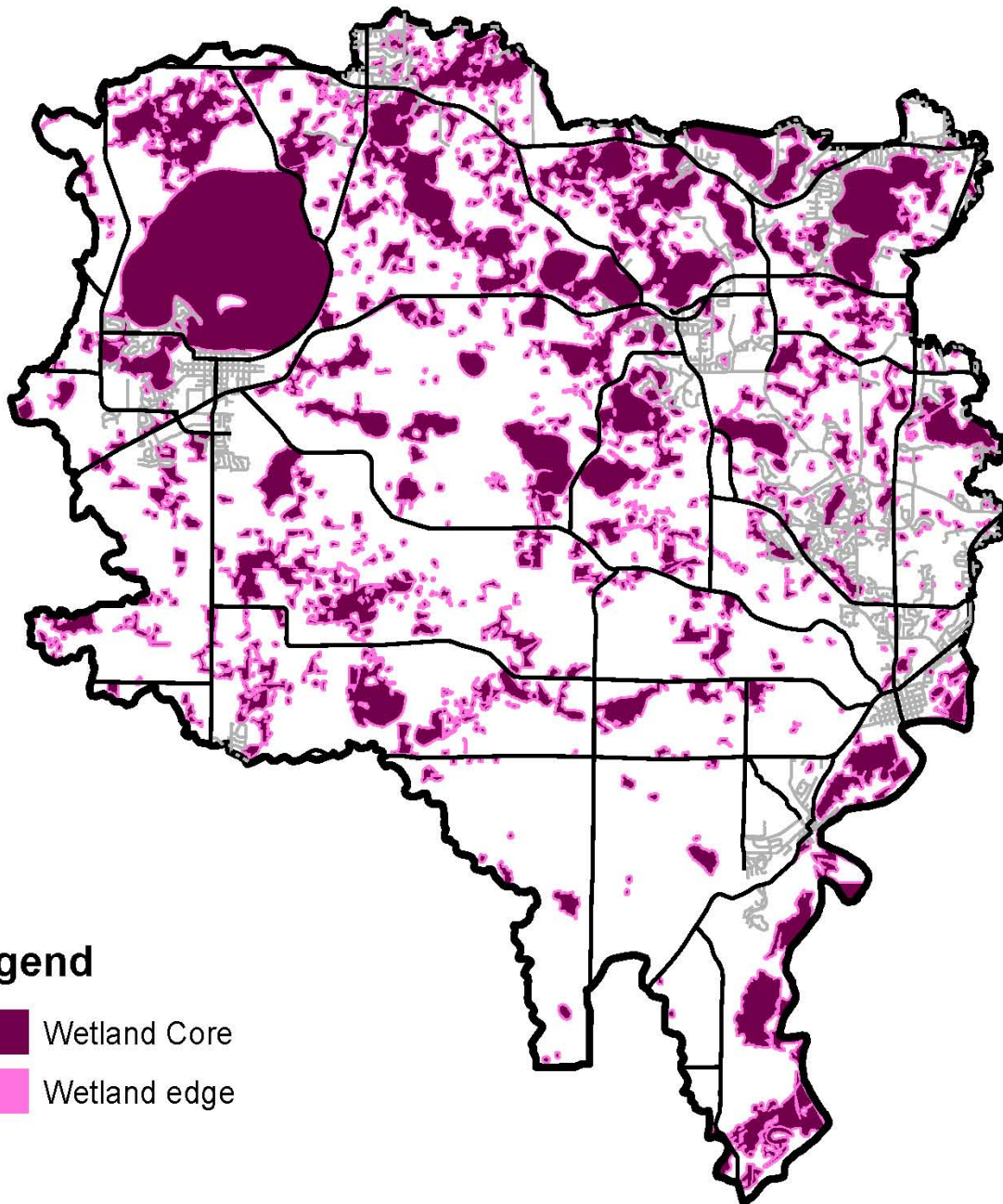


0 0.450.9 1.8 2.7 3.6
Miles

Map 8 - Critical Wetland Habitat

Laketown Township Area

Data Source: Minnesota DNR - MIS Bureau 2003



Legend

-  Wetland Core
-  Wetland edge

Park + Ridge Landscape Architecture

LA 3004 - Regional Landscape Planning

March 2, 2010 - Michael P Schumann

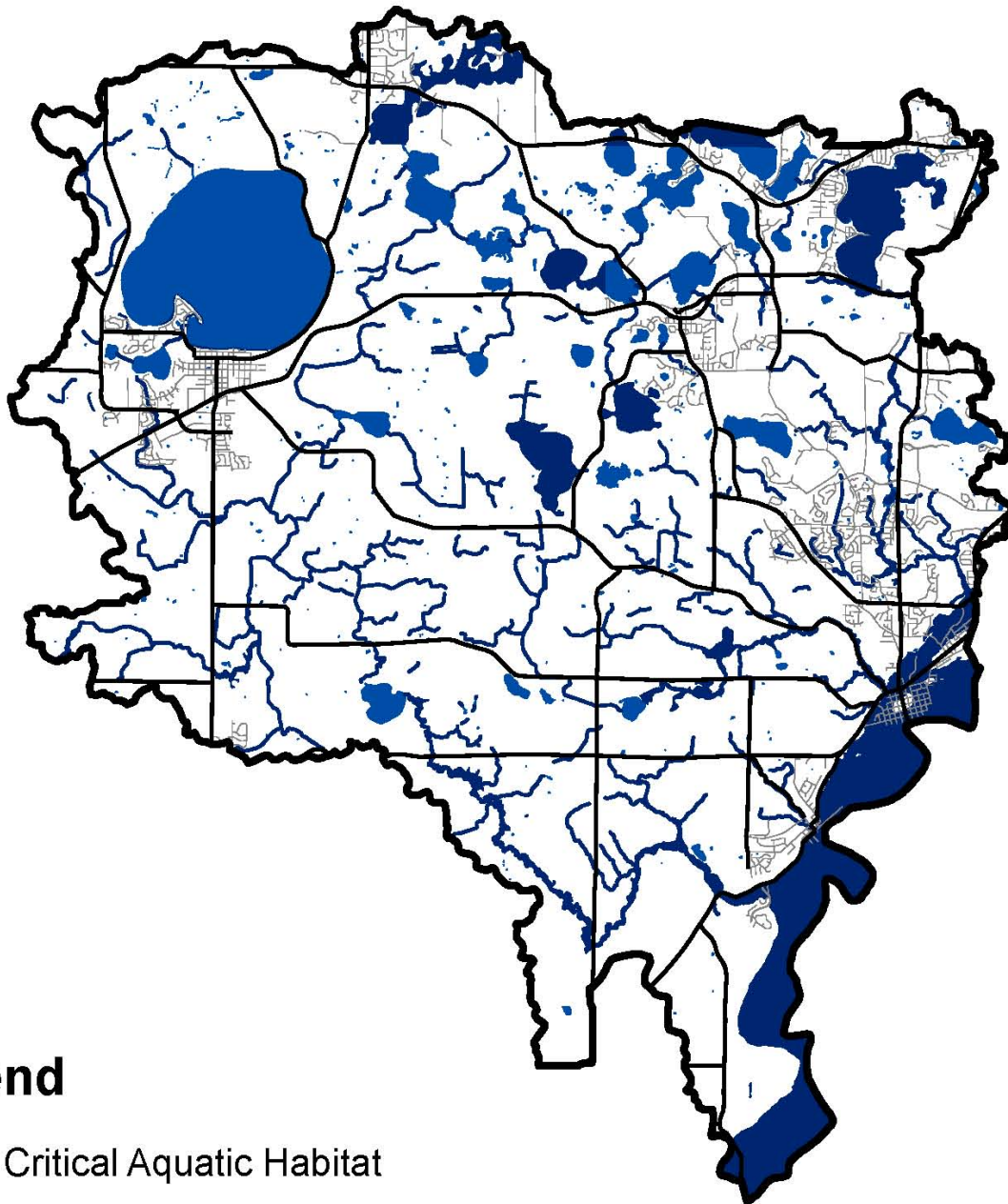


0 0.5 1 2 3 4 Miles



Map 9 - Critical Aquatic Habitat

Laketown Township Area

Data Source: Minnesota DNR - MIS Bureau 2003



Legend

-  Critical Aquatic Habitat
-  Water



0 0.5 1 2 3 4 Miles

Park + Ridge Landscape Architecture

LA 3004 - Regional Landscape Planning

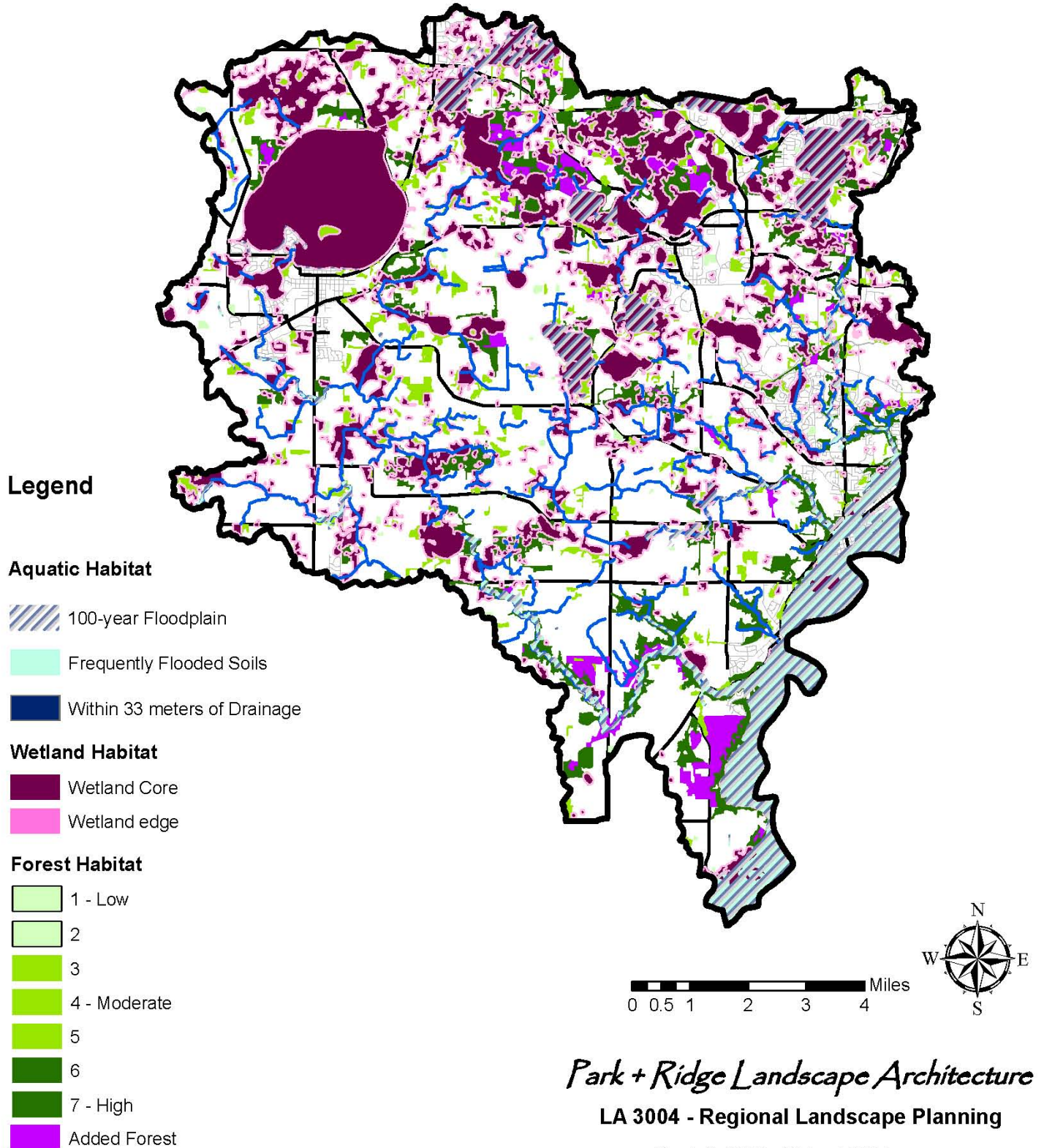
March 2, 2010 - Michael P Schumann

Map 10 - Critical Habitat Composite

Laketown Township Area

Data Source: Minnesota DNR - MIS Bureau 2003

Federal Emergency Management Agency (FEMA)



Park + Ridge Landscape Architecture

LA 3004 - Regional Landscape Planning

March 2, 2010 - Michael P Schumann