

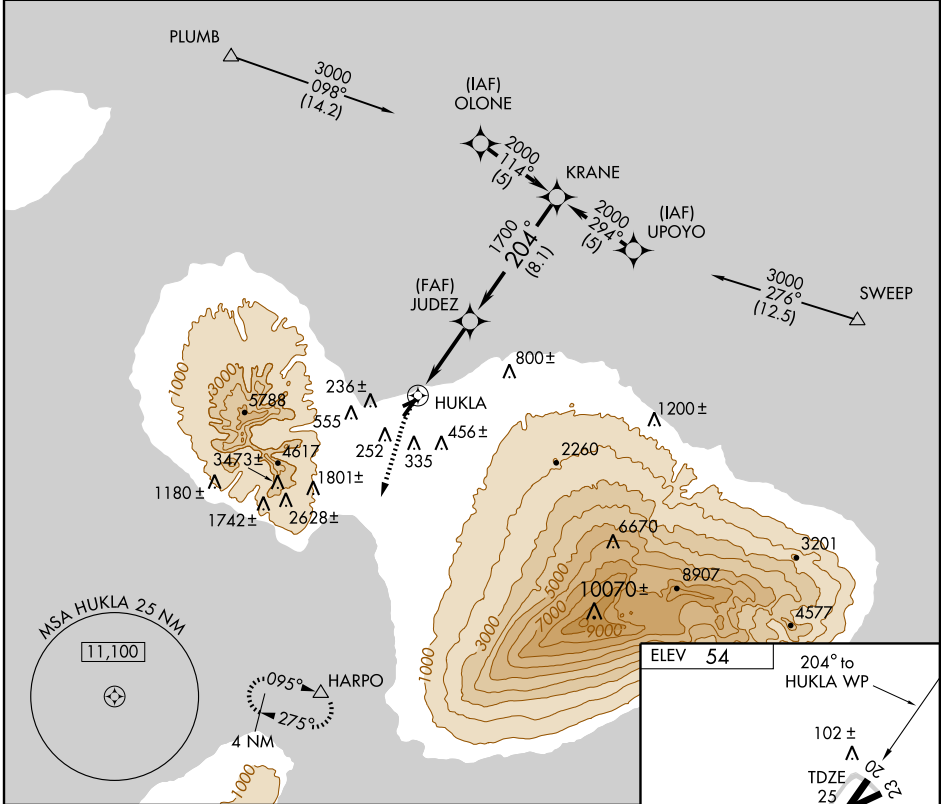
# RNAV (GPS) RWY 20

KAHULUI (OGG)(PHOG)

APP CRS <b>204°</b>	Rwy Idg <b>6995</b>
	TDZE <b>25</b>
	Apt Elev <b>54</b>

<b>NA</b>	GPS or RNP-0.3 Required. DME/DME RNP-0.3 NA.	MISSED APPROACH: Climbing left turn to 6000 direct HARPO WP and hold.			
-----------	---	---	--	--	--

ATIS <b>128.6</b>	HCF APPROACH <b>120.2 322.4 (NORTH)</b> <b>119.5 225.4 (SOUTH)</b>	MAUI TOWER ★ <b>118.7(CTAF) 279.6</b>	GND CON <b>121.9 279.6</b>	CLNC DEL <b>120.6 290.5</b>	UNICOM <b>122.95</b>
----------------------	--	--	-------------------------------	--------------------------------	-------------------------



PAC, 18 NOV 2010 to 13 JAN 2011

PAC, 18 NOV 2010 to 13 JAN 2011

6000	HARPO	KRANE	
	△	2000	
		JUDEZ	Procedure Turn NA
		HUKLA	
		1700	
		3.00° TCH 75	
		0.2	4.9 NM
			8.1 NM
CATEGORY	A	B	D
LNVA MDA	400-1	375 (400-1)	400-1¼ 375 (400-1¼)
CIRCLING	660-1 606 (700-1)	720-1 666 (700-1)	780-2 726 (800-2)

