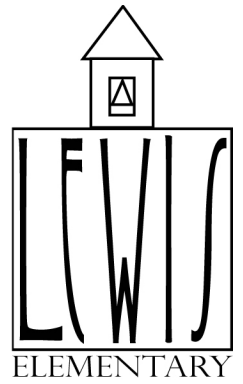


# Meriwether Lewis Elementary School

## Weekly Letter

503 916 6360 - <http://lewiselementary.org>

March 11, 2009



### Principal Notes From Mr. Lauer

#### Lewis Auction A Great Success

Last Thursday our Lewis PTA held their 3rd auction and it was a great success. You can read more about the auction in the PTA section below, but I wanted to note and acknowledge the great work done by our auction committee and the numerous volunteers who put on the event. The staff and I greatly appreciate the work done by these folks and for all the support that was exhibited by the participation in the auction. Thank you all.

#### Arrival and Dismissal Times Reminder

Please note that students should not be coming to school before 8:30. We do not have any supervision on the playground until that time. Also, students are not permitted to play on the playground after school unless being supervised by a parent. Students should be picked up at dismissal time or be walking home immediately after school unless involved in after school activities. Students not picked up at dismissal are required to wait in the school office area. Breakfast is served in the cafeteria beginning at 8:20 am. Students who ride their bikes or skateboard to school should not be riding those on the playground before or after school. Also those students are required to wear helmets.

#### Health Reminder from Nurse Martha

Please see today's packet for an important health reminder from our school nurse, Martha Button. If you have any health related questions or concerns, please feel free to contact Martha at 503 916 6360.

#### Lost and Found is Growing: Left Items to Be Donated!

The Lost and Found area has grown over the winter and we plan to donate unclaimed items to Goodwill over Spring Break. Please be sure to check the lost and found, located near the school office, if you are missing clothing and other items such as lunch boxes.

#### TRANSFER INFORMATION FOR 5TH GRADE STUDENTS: TRANSFER DEADLINE IS THIS FRIDAY, MARCH 13!

**Important Information for our 5th Grade Students and Their Families Regarding Middle School and 6th Grade: Transfer Window: January 30, 2009 - March 13, 2009**

Middle School Transfer Process: Very **IMPORTANT PLEASE READ**  
This process is very important for our 5th grade students who may be considering a middle school other than their home middle school. Some middle schools require attendance at a mandatory parent information meeting in order to be considered for a transfer.

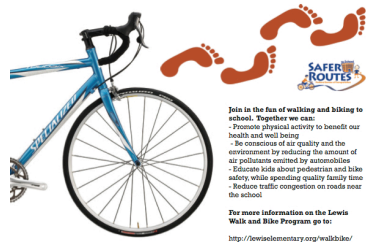
**Students who live in the Lewis attendance area are slated to attend Sellwood Middle School. Students who have transferred to Lewis are slated to attend their neighborhood middle school unless they choose to go through the transfer process.** More information can be found on the PPS Enrollment and Transfer Office page at <http://readyssetconnect.pps.k12.or.us>.

**Note:** If you would like further information or any help with the transfer process, please contact the school office or the Enrollment and Transfer office at 503 916 3205 .



### Looking for Incoming Kindergarten Students...

As we begin to plan for the 2009-2010 school year we are asking any of our families who will have an incoming kindergarten student to please contact the school office if they have not already done so. Also if you know of neighborhood children who will be attending Lewis could you please encourage those parents to contact the school office. Thank you for your help and support



The next Walk and Bike Day at Lewis is:

## March Walk and Bike Day Thursday, March 12, 2009

### Upcoming Events

PTA Meeting - Thursday, March 12, 2009 6:30 pm

Site Council Meeting - Monday, March 16, 2009 3:30 pm

Drama Club Performances - March 19 & 20

Spring Break - March 23 - March 27

### Lewis PTA News

**Next Meeting: Thursday, March 6, 2009 - 6:30 pm**

The next PTA meeting is scheduled for March 12th at 6:30 pm. We will be discussing fundraising. We will be looking at how to maximize fundraising dollars and volunteer hours, while reducing fundraising fatigue. Want to help with fundraising or be on a committee or just have an idea? Please come to the next PTA meeting and let's talk about how to keep current programs running and how to continue improving our fundraising efforts.

#### Lewis Elementary 3rd Annual Auction Update

We had such a great time at the auction and managed to raise \$12,311.00! This is the gross earnings and doesn't include the money spent to host the auction (the total profit should be a few thousand dollars less than the gross number). We will have more on this and the information becomes available.

We would like to acknowledge some of our volunteers who helped to make our auction a success. Thank you to... *Jen Kelly, Jen Neitzel, Julie LaRoche, Monica Nettle, Suzanne Miller*. I would also like to thank everyone who worked the night of the auction: *Jeanette Finley, Stephanie Sook, Micah Yeigh, Matthew Meskel, Sue Korepela, Josh Alper, Cassandra & Martin Nicholson, Matt Perron & Jason Franke*. Also a thank you to the kitchen Staff: *Andrea Bach, Kathlyn Meskel, Monica Franke, Christy Perron*. Thank you all so much! Without you we would not have had a great night.  
*Angie Toops - Auction Chair*

#### Auction Buy Ins Still Available

Check out the bulletin boards - in the hallway (the ones in the dip). We have re-posted the buy-ins (parties around a particular theme that you can buy-in to). A few have sold out, but we still have room in many of the buy-ins. We have roller skating parties, parents day out/child care, after school pizza parties, adult singing and sangria parties just to name a few.

#### Lewis Eat Out - Thank You Laughing Planet!

We raised \$622.06 at our last Lewis Eat Out at Laughing Planet! Thanks so much for supporting Lewis and this type of fundraiser!

#### Lewis School Clothes Closet needs donations

We try to keep clothing on hand in the event students need a change of clothes while they are at school. We are in need of gently used sweatpants (all sizes) and new underwear (all sizes, boys & girls). Please bring donations to the school office. Thank You.