

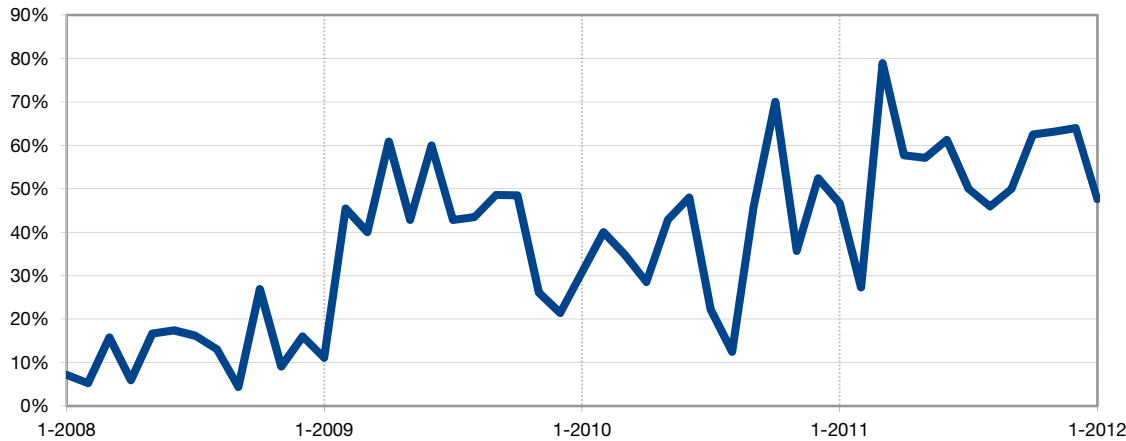
Lender-Mediated Report – January 2012

A RESEARCH TOOL PROVIDED BY MIDWEST REAL ESTATE DATA LLC
FOR MEMBERS OF THE BELVIDERE BOARD OF REALTORS®

Lender-mediated properties are those marked in MRED as "Foreclosed," "REO,"
"Pre-Foreclosure" or "Short Sale." Residential activity only.



Share of Closed Sales that were Lender-Mediated: 47.6%



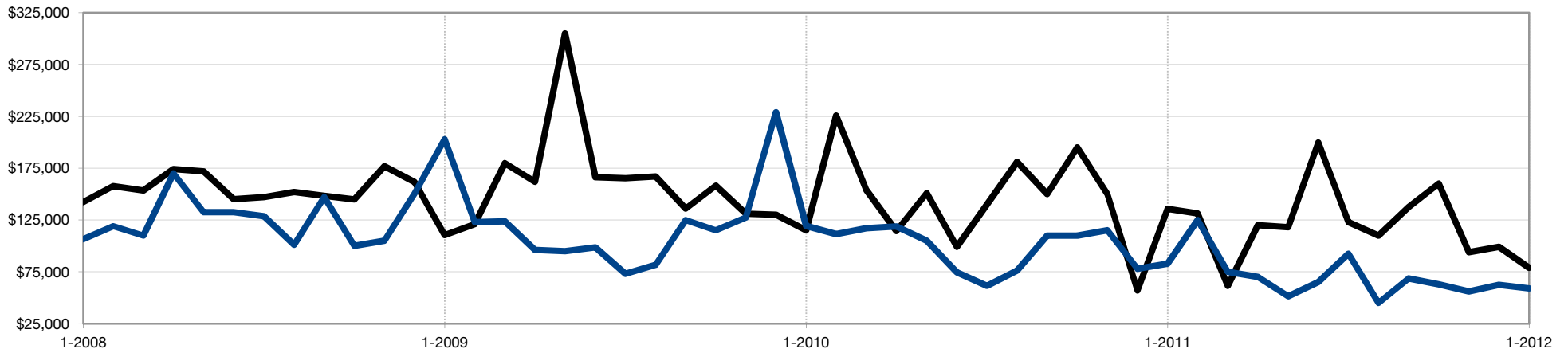
Closed Sales	1-2011	1-2012	+ / -
Traditional	8	11	+37.5%
REO	2	7	+250.0%
Short Sales	5	3	-40.0%
Total Market*	15	21	+40.0%

Median Sales Price	1-2011	1-2012	+ / -
Traditional	\$135,750	\$79,000	-41.8%
REO	\$94,250	\$43,000	-54.4%
Short Sales	\$72,000	\$86,000	+19.4%
Total Market*	\$120,000	\$75,000	-37.5%

*Total Market is not a sum of traditional, REO and short sale activity, as some lender-mediated homes can be listed both as REO and short sale.

Median Sales Prices

— Traditional — Lender-Mediated



Lender-Mediated Report – Activity by Area

A RESEARCH TOOL PROVIDED BY MIDWEST REAL ESTATE DATA LLC FOR MEMBERS OF THE BELVIDERE BOARD OF REALTORS®

Lender-mediated properties are those marked in MRED as "Foreclosed," "REO," "Pre-Foreclosure" or "Short Sale." Residential activity only. | **Total** represents all traditional and lender-mediated activity. **Share** represents the market share of lender-mediated activity for each area. | Inventory counts are based on **one month of activity** for the current month. Closed Sales, Median Sales Price and Average Sales Price figures are based on a **rolling 12-month timeframe** through the month indicated.



January 2012

Homes for Sale Current Month

Closed Sales Last 12 Months

Median Sales Price For the 12 Months Ending...

Average Sales Price For the 12 Months Ending...

	Homes for Sale Current Month			Closed Sales Last 12 Months			Median Sales Price For the 12 Months Ending...						Average Sales Price For the 12 Months Ending...					
	Total	Lender-Mediated	Share	Total	Lender-Mediated	Share	1-2011			1-2012			1-2011			1-2012		
									+/-			+/-			+/-			+/-
							Lender-Mediated			Traditional Properties			Lender-Mediated			Traditional Properties		
Balance of Boone County	1	0	0.0%	0	0	--	\$99,000	\$0	-100.0%	\$310,000	\$0	-100.0%	\$99,000	\$0	-100.0%	\$310,000	\$0	-100.0%
Belvidere	160	65	40.6%	177	91	51.4%	\$91,694	\$65,000	-29.1%	\$136,500	\$117,750	-13.7%	\$106,525	\$77,444	-27.3%	\$158,560	\$130,420	-17.7%
Caledonia, Argyle	10	1	10.0%	12	3	25.0%	\$283,500	\$300,000	+5.8%	\$195,000	\$270,000	+38.5%	\$303,800	\$261,667	-13.9%	\$259,714	\$274,667	+5.8%
Capron	15	4	26.7%	9	6	66.7%	\$97,500	\$42,000	-56.9%	\$124,550	\$240,000	+92.7%	\$92,461	\$53,268	-42.4%	\$172,850	\$255,000	+47.5%
Garden Prairie	8	1	12.5%	3	3	100.0%	\$45,000	\$128,000	+184.4%	\$122,500	\$0	-100.0%	\$45,000	\$171,667	+281.5%	\$125,833	\$0	-100.0%
Poplar Grove	79	31	39.2%	79	54	68.4%	\$104,950	\$64,000	-39.0%	\$147,450	\$145,000	-1.7%	\$113,837	\$75,581	-33.6%	\$170,275	\$193,650	+13.7%