










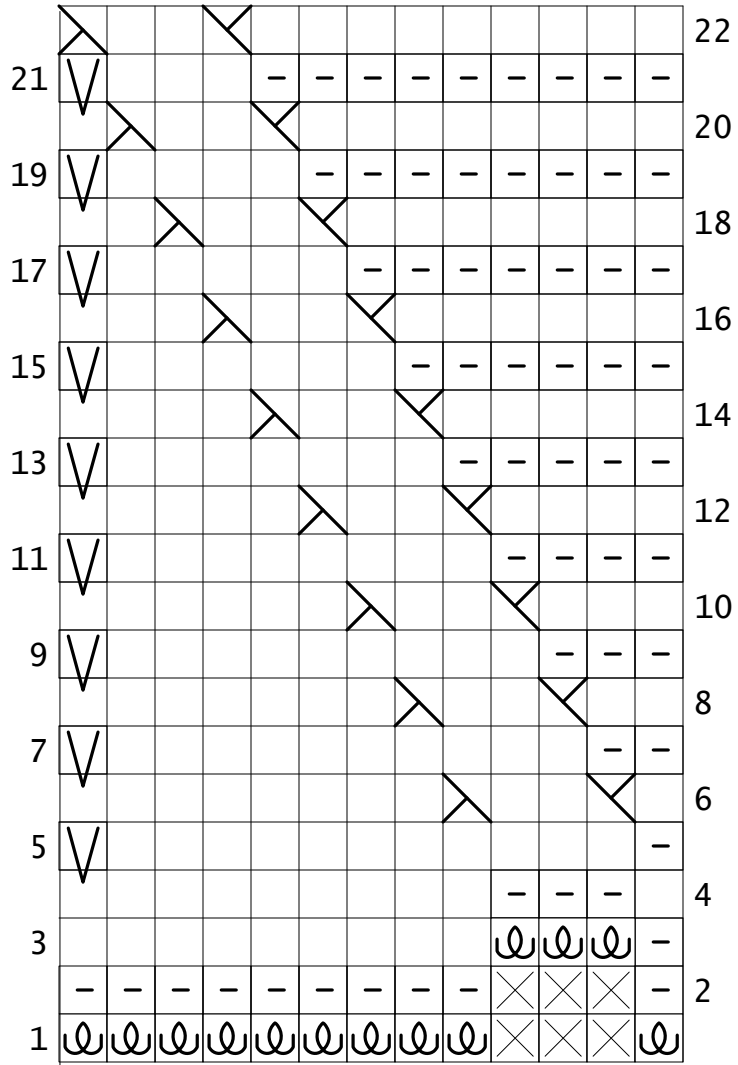


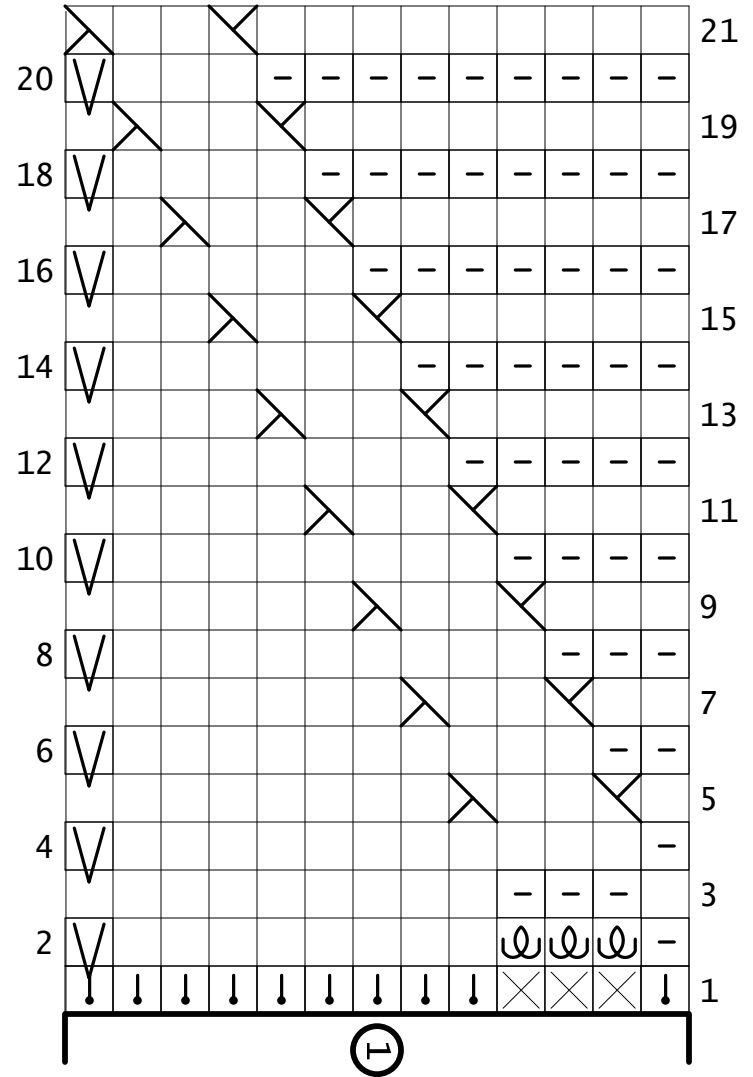
Stitch Key

Symbol	Meaning on right side rows	Meaning on wrong side rows
[Blank Square]	Knit 1.	Purl 1.
	Purl 1.	Knit 1.
	No stitch.	No stitch.
	Backward loop.	Backward loop.
	Slip 1 with yarn in back.	Slip 1 with yarn in front.
	SSK.	n/a
	Knit 2 together.	Purl 2 together.
	Purl 2 together.	Knit 2 together (not used).
	Pick up and knit 1 from edge of previous square indicated.	Pick up and purl 1 from edge of previous square indicated.
	Left cross: Slip 3 to cable needle and hold in front, knit 1, knit 3 from cable needle.	n/a
	Left cross with SSK: Slip 3 to cable needle and hold in front, SSK, knit 3 from cable needle	n/a
	Knit 3 from held stitches (cable of previous square) indicated.	n/a

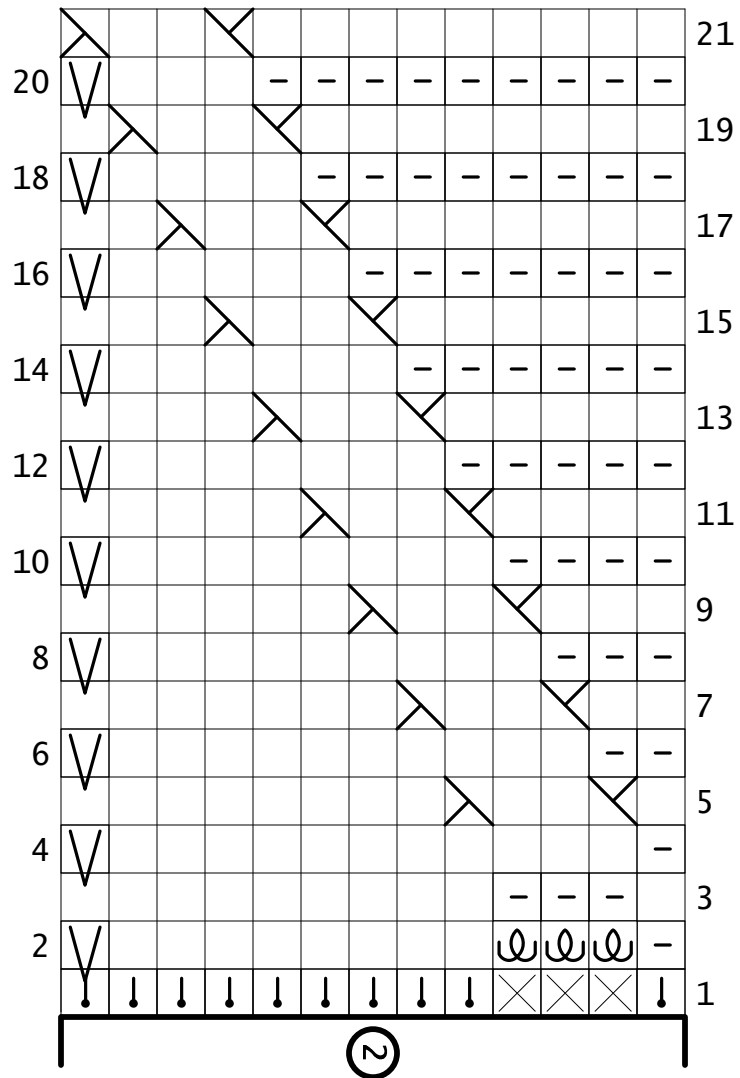
①



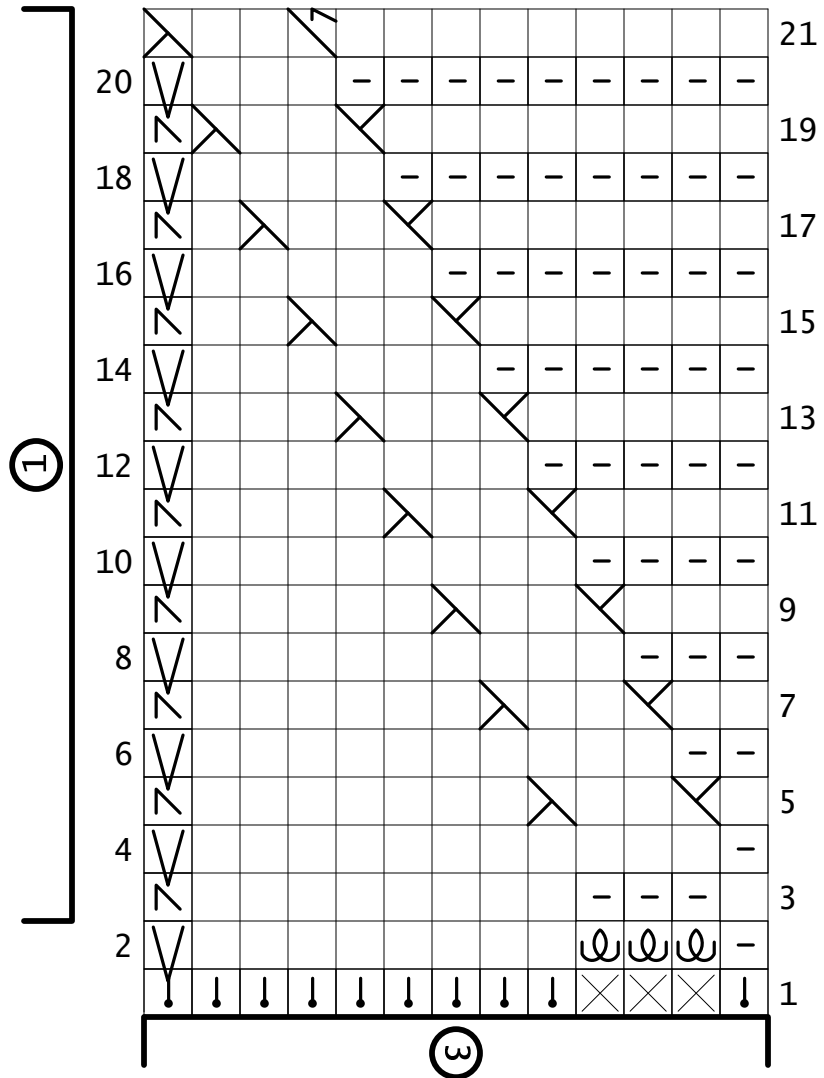
②



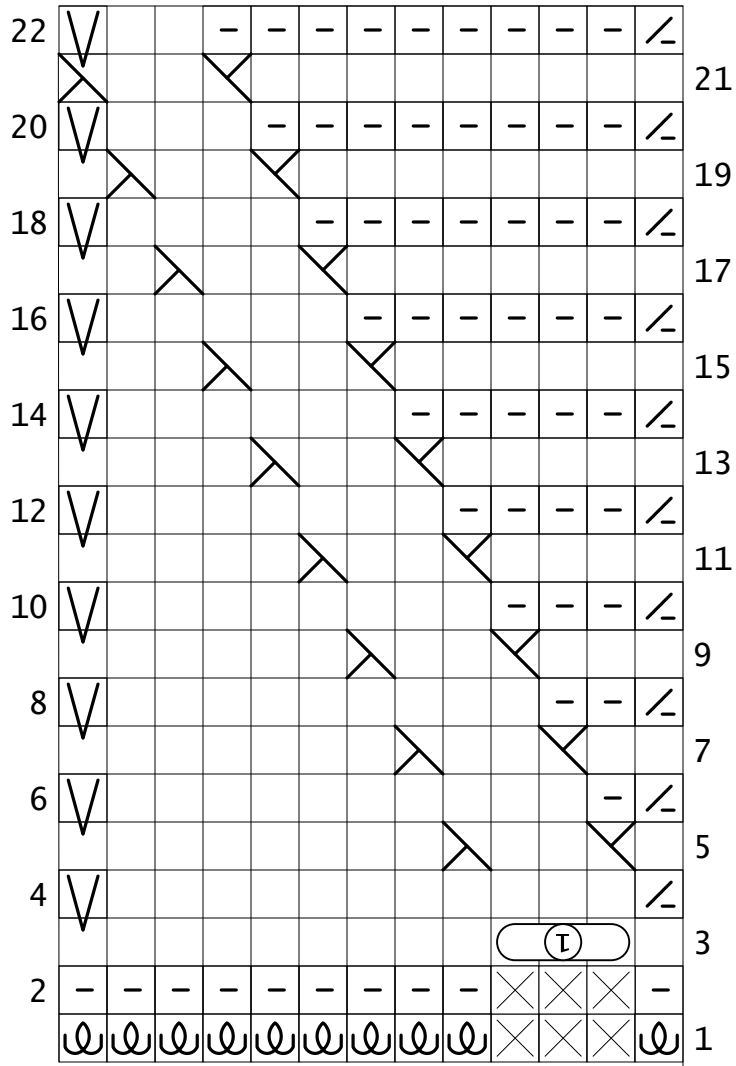
3



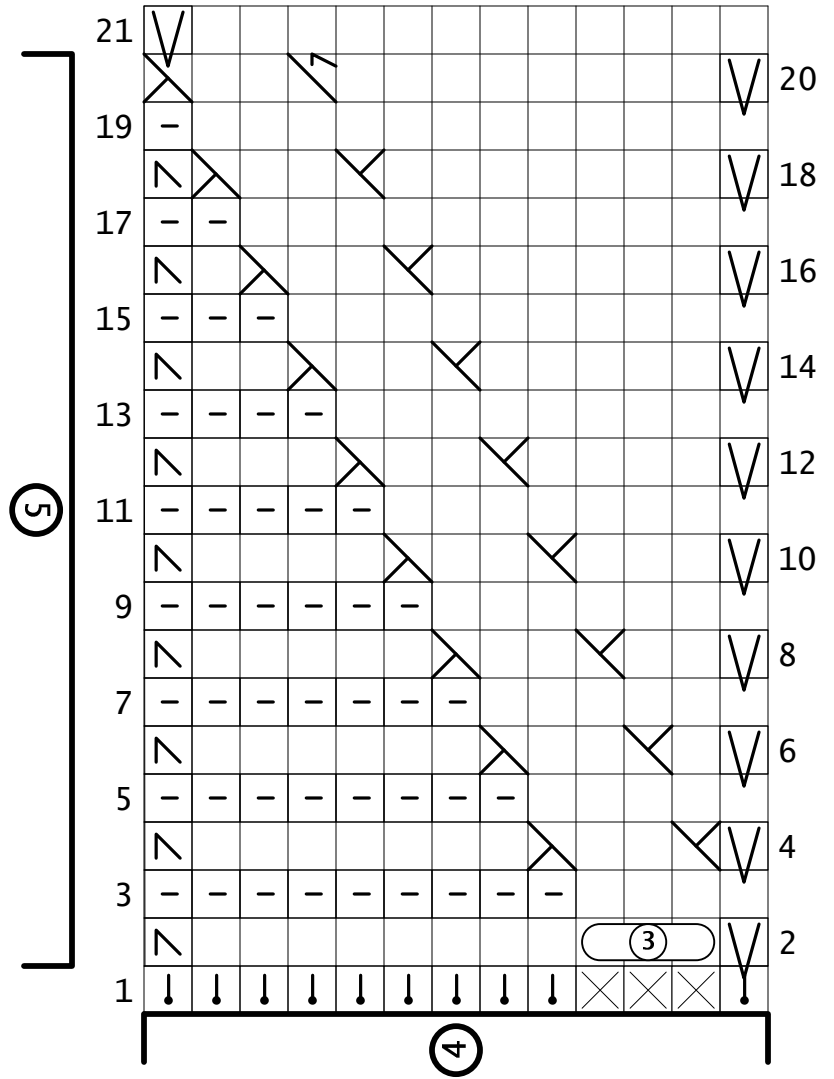
4



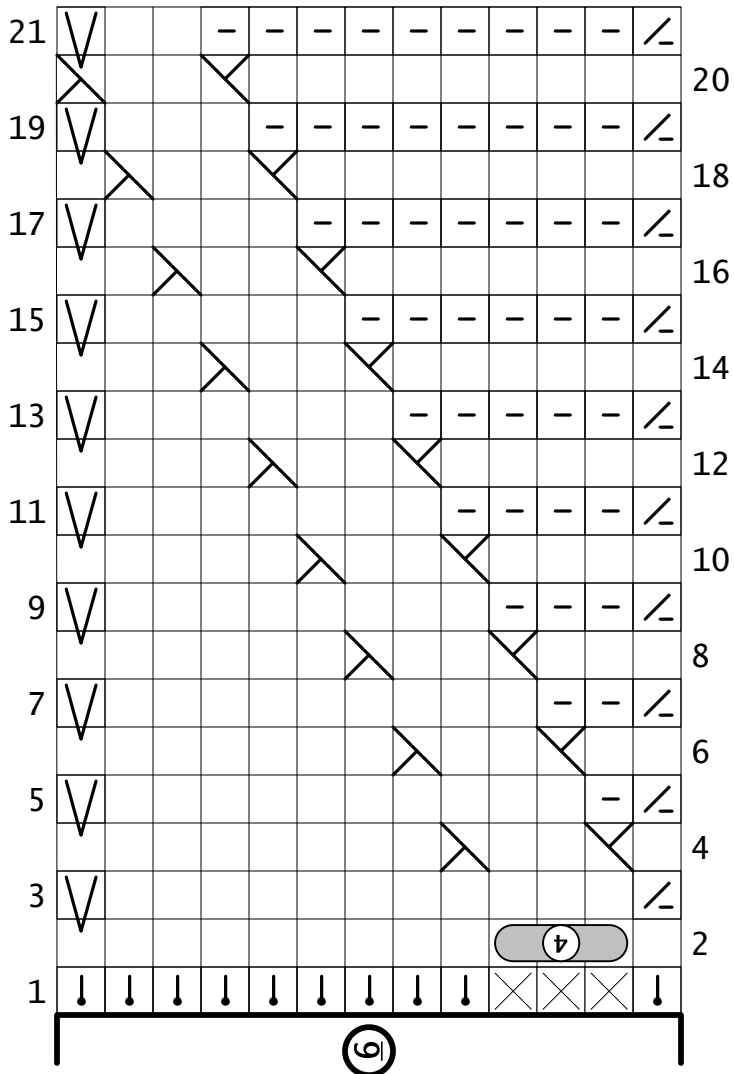
5



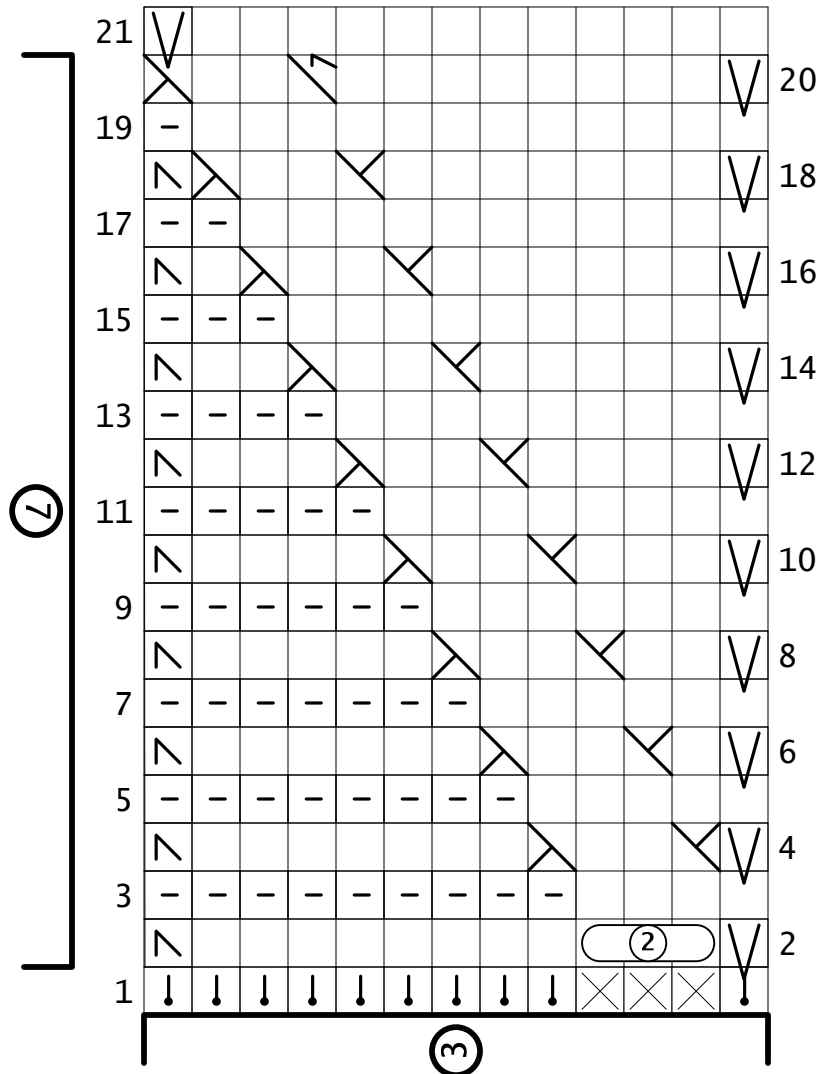
6



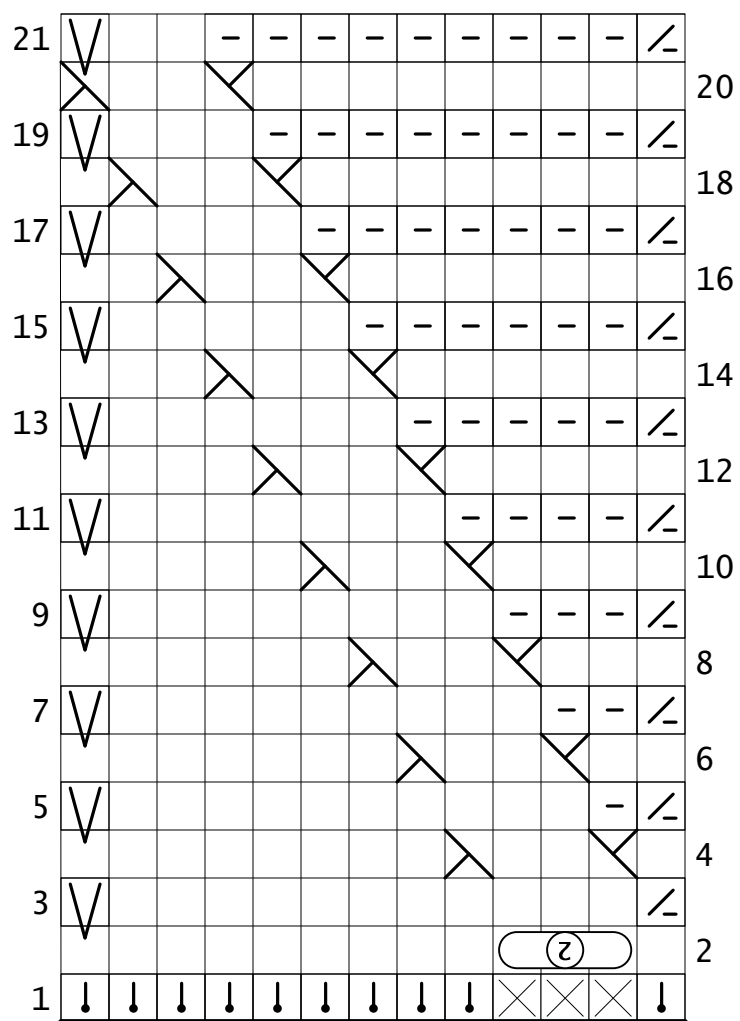
7



8

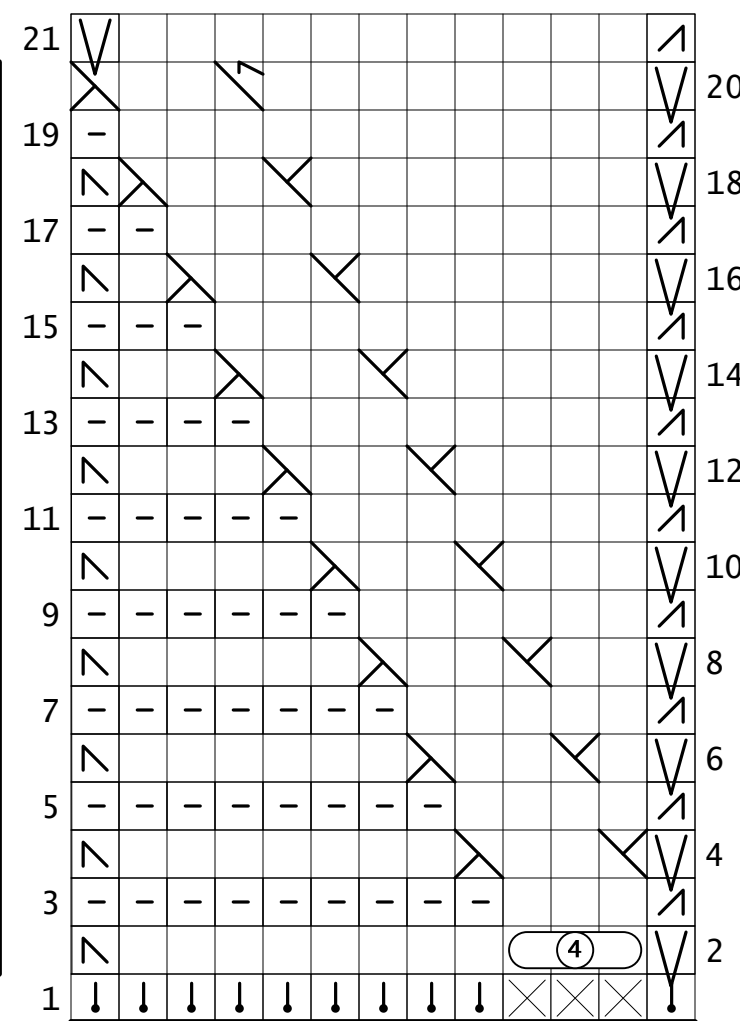


11



10

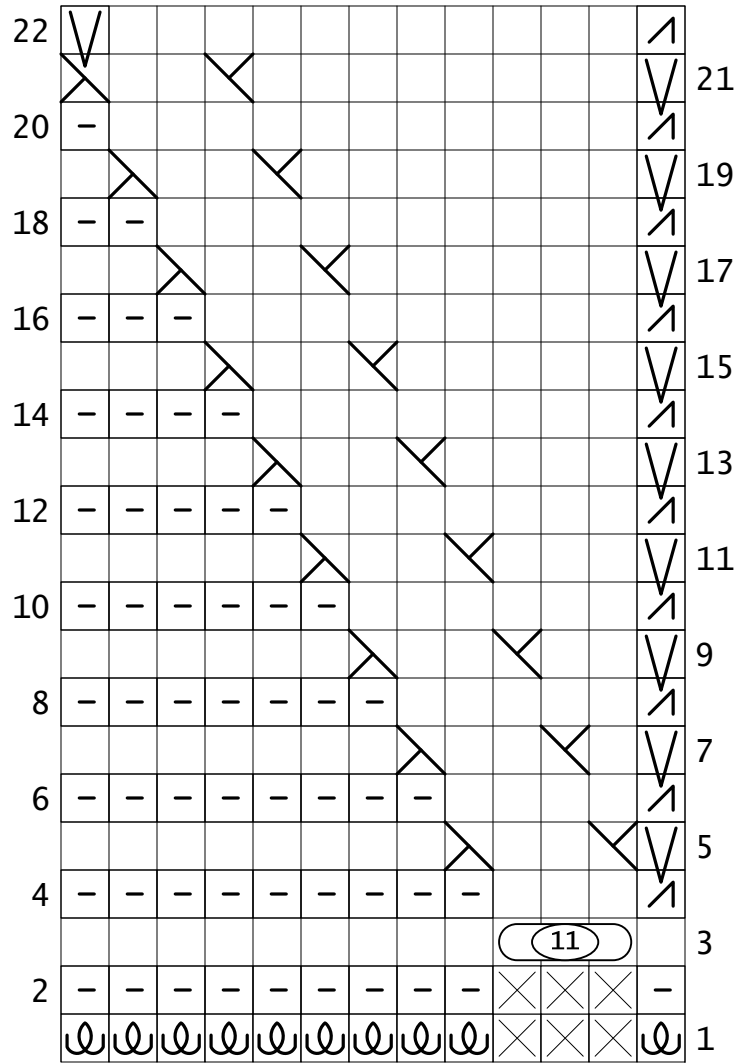
12



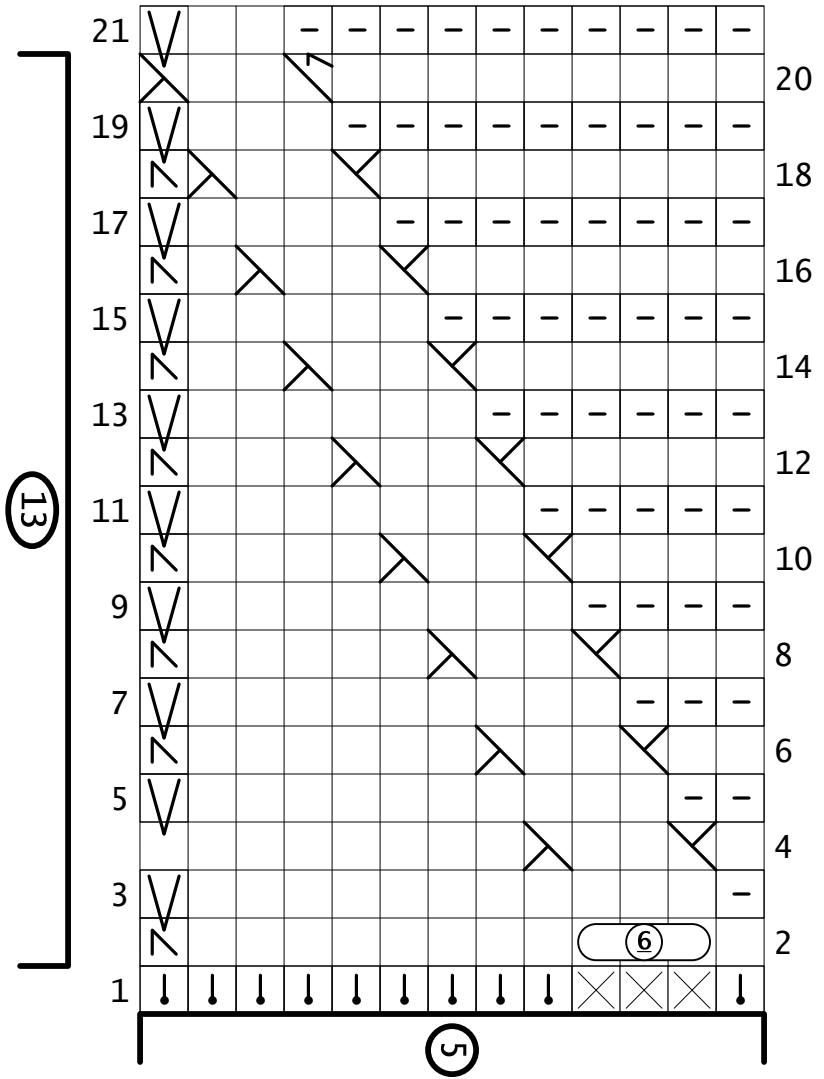
1



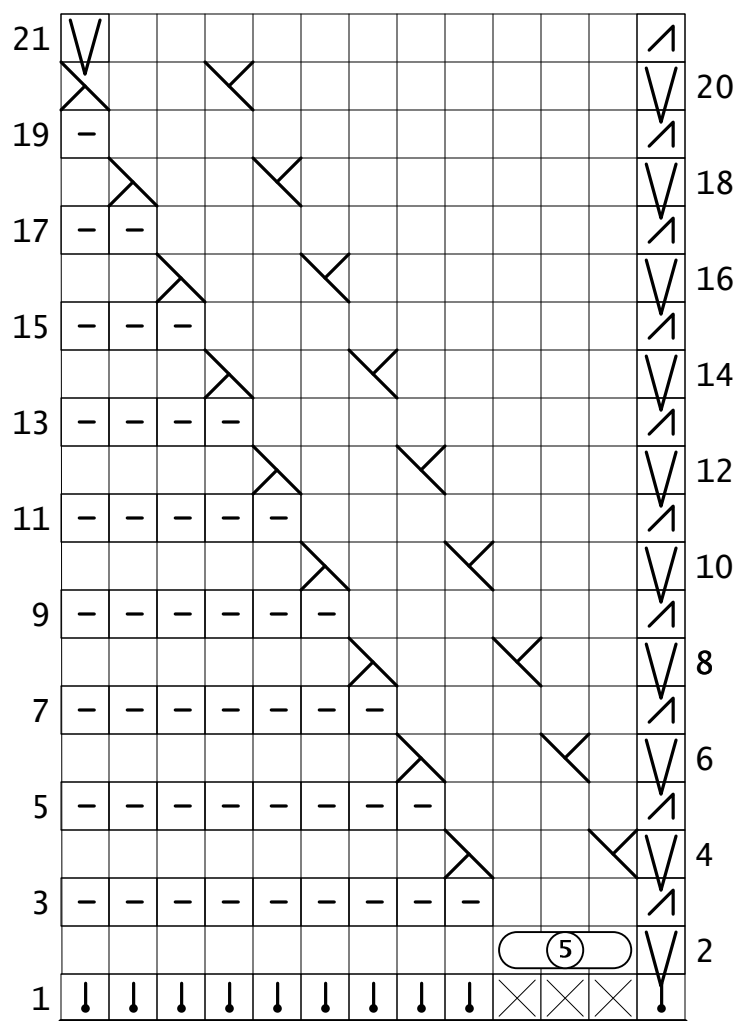
13



14

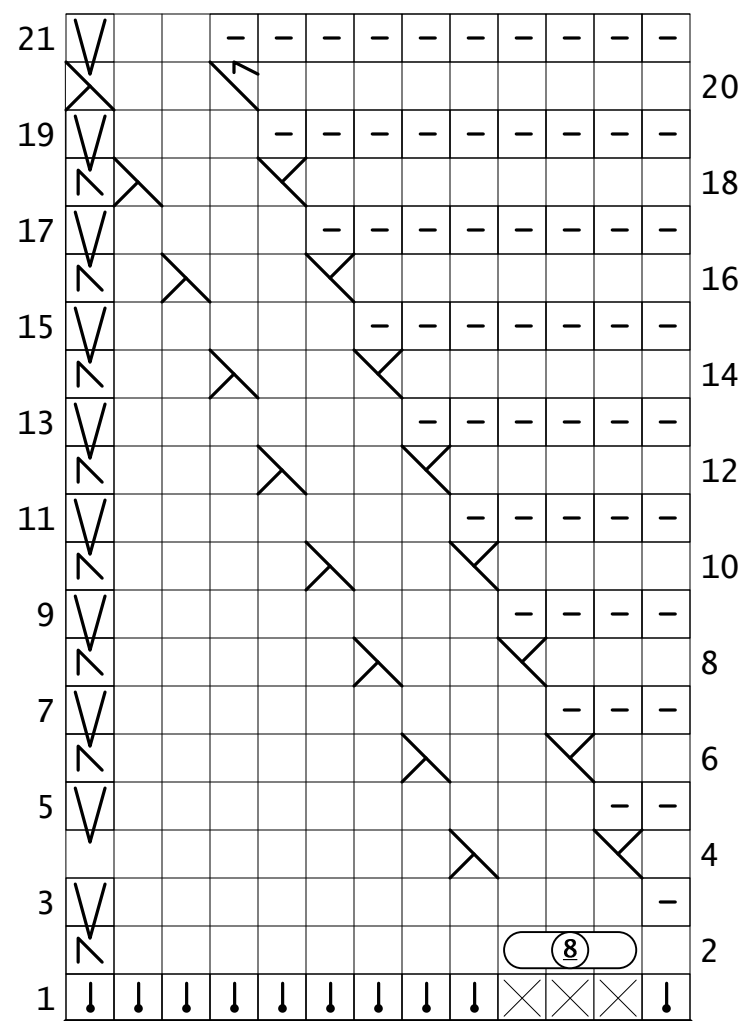


15



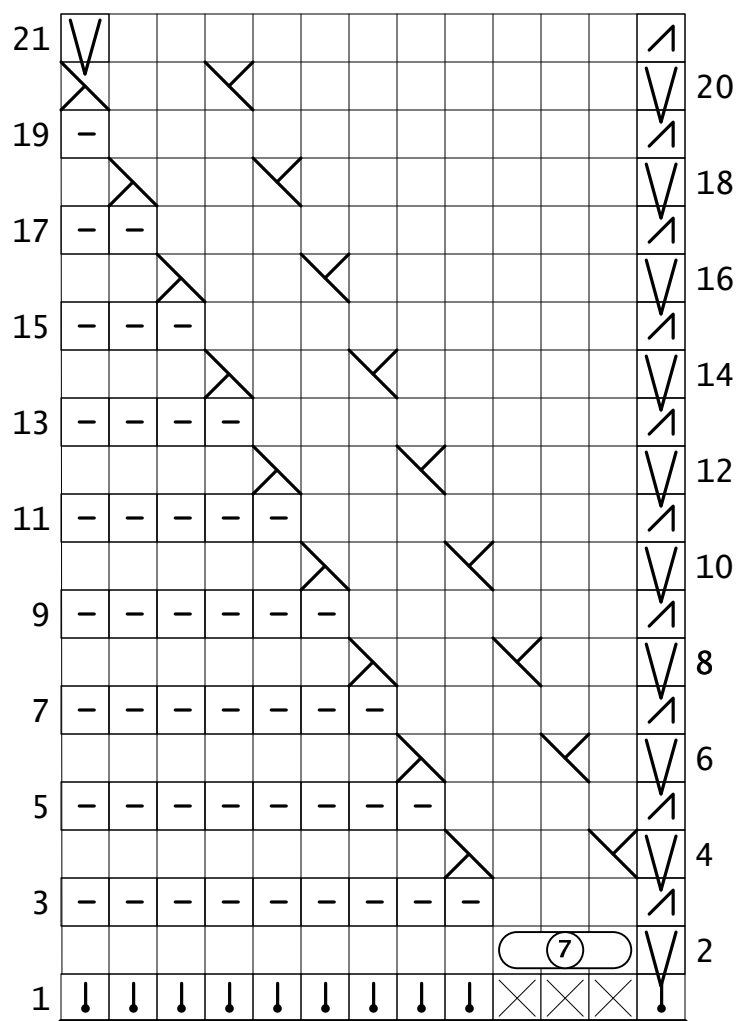
14

16



7

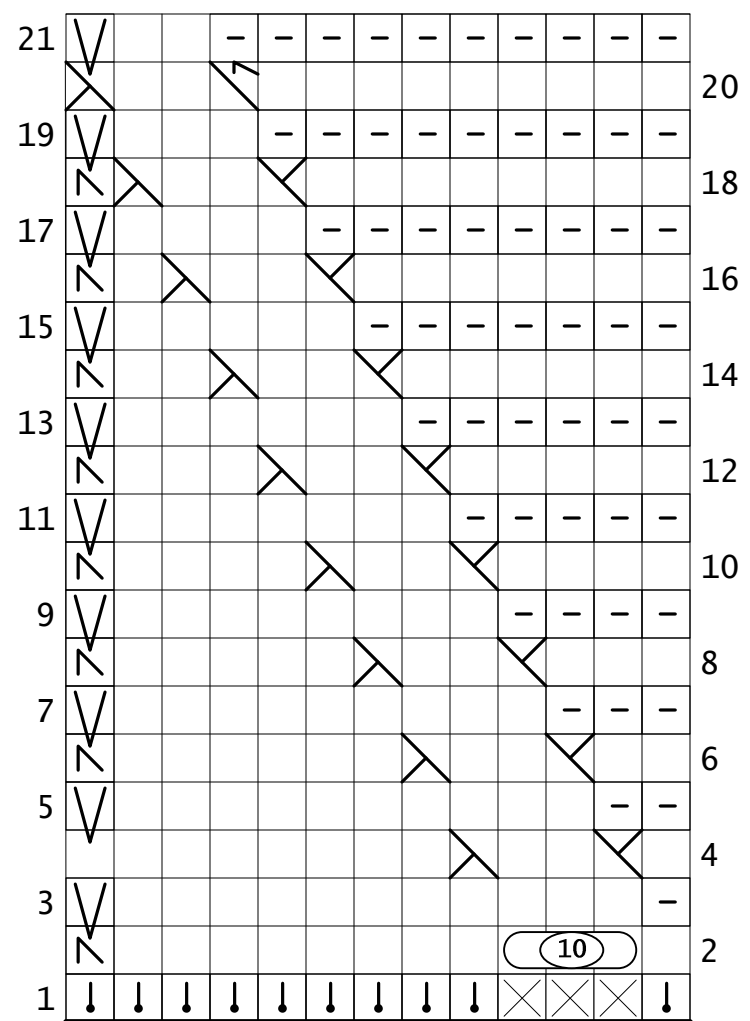
17



16



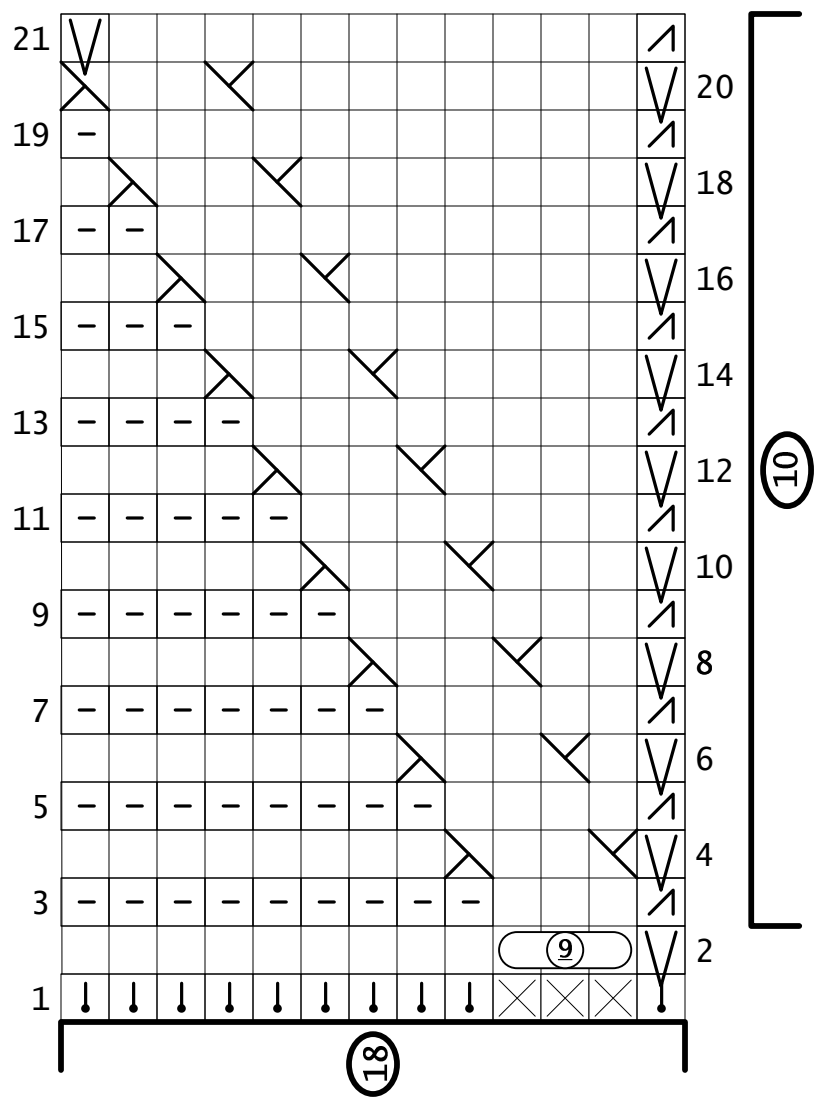
18



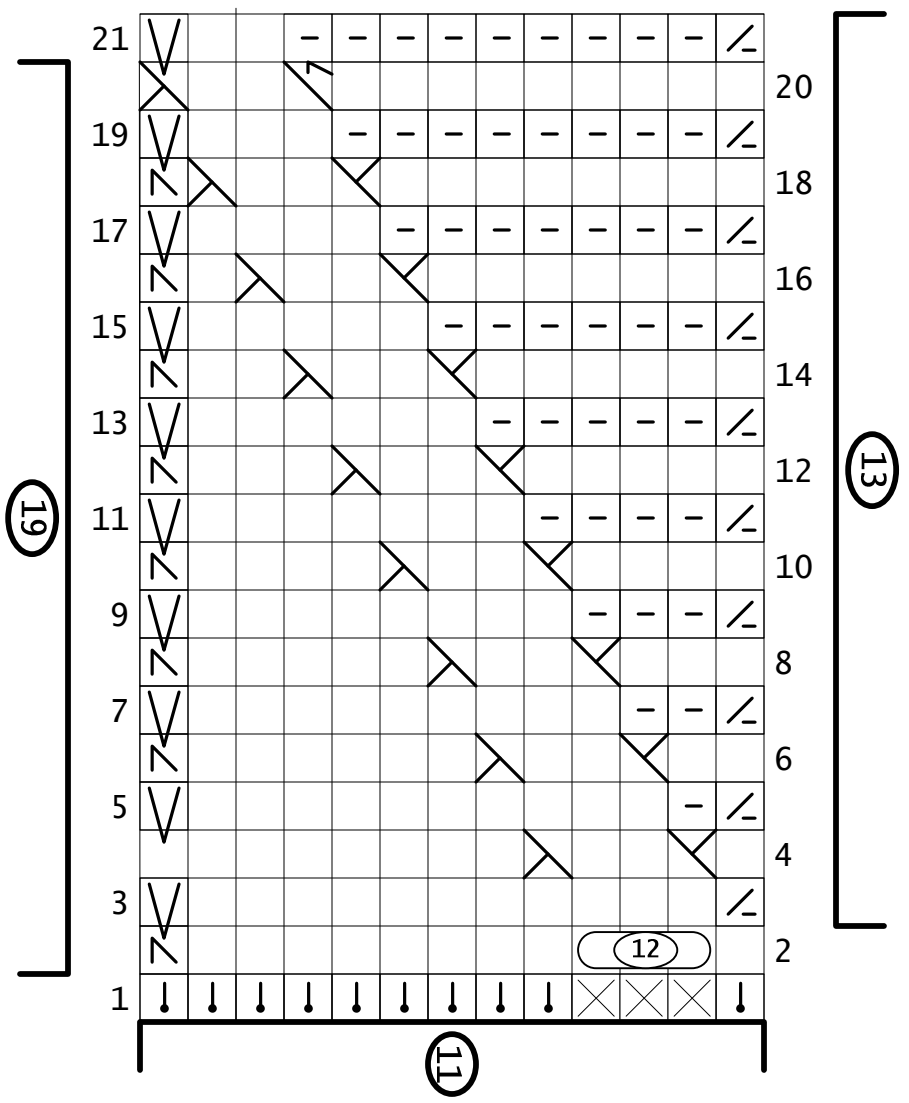
6



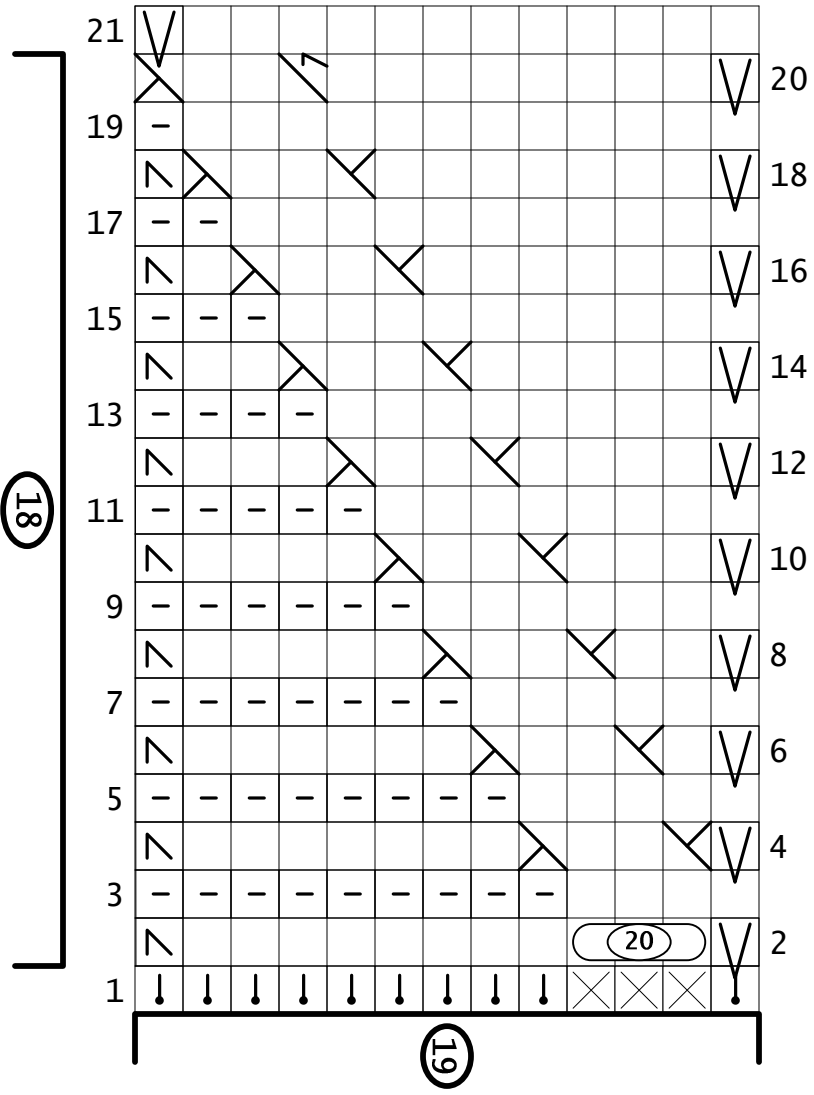
19



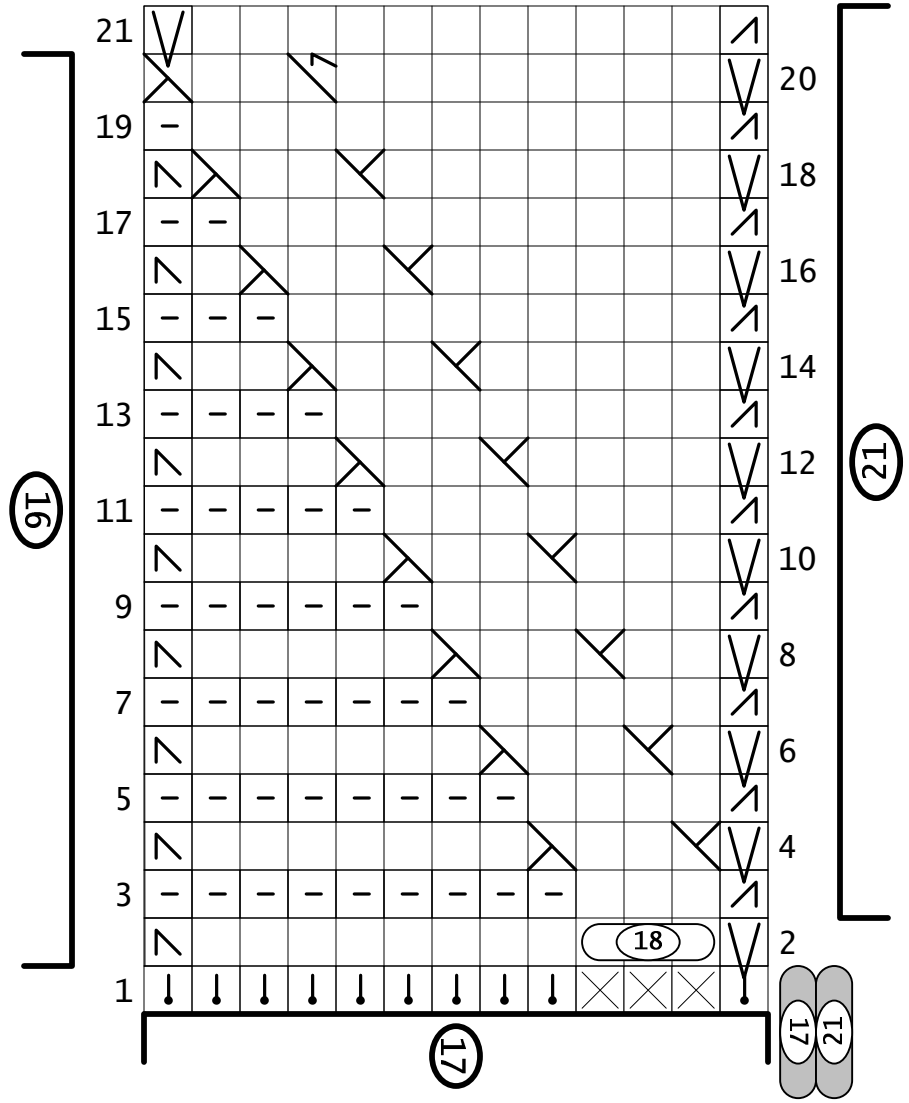
20



21



22



18

19

20

16

17

18

17 21

21

