



# Market Report.....

Volume 8.02

10th January

2012

Core Facts

Market prices provided by the Melbourne Market as at 06/01/12

<b>APPLES</b> 12kg Cartons	<b>LOW</b> \$\$	<b>HIGH</b> \$\$	<b>AVERAGE</b> \$\$
Fuji	30	40	32.58
Golden Delicious	32	45	36.09
Granny Smith	28	40	31.59
Pink Lady	22	36	26.10
Red Delicious	22	30	26.00
Royal Gala	35	45	37.58
Sundowner	24	30	27.00
<b>APRICOTS</b>	<b>\$\$</b>	<b>\$\$</b>	<b>\$\$</b>
5kg Carton	20	30	23.13
Large 10kg	15	35	23.75
<b>NECTARINES</b>	<b>\$\$</b>	<b>\$\$</b>	<b>\$\$</b>
White Flesh 10kg Carton	10	20	15.00
White Flesh 5kg Tray	10	20	15.00
Yellow Flesh 10kg Carton	10	20	15.00
Yellow Flesh 5kg Carton	10	20	15.00
<b>PEACHES</b>	<b>\$\$</b>	<b>\$\$</b>	<b>\$\$</b>
White Flesh 5kg Tray	16	20	17.03
Yellow Flesh Medium 10kg	10	20	15.00
Yellow Flesh Medium 5kg	10	20	15.00
Cling Stone 5kg Tray	20	20	20.00
<b>PEARS—13kg Carton</b>	<b>\$\$</b>	<b>\$\$</b>	<b>\$\$</b>
B.Bosc	15	25	20.00
Corella—18L Ctn	20	24	20.04
Corella—SL Tray	16	20	17.03
Packham	12	20	16.00
<b>PLUMS</b>	<b>\$\$</b>	<b>\$\$</b>	<b>\$\$</b>
9L Carton	15	40	22.68

Fruit Growers Victoria Limited Office: 2 Rumbalara Road (PO Box 612) Mooroopna 3629

Phone; (03) 5825 3700 Fax; (03) 5825 5029 Email; office@fgv.com.au

ABN 39 113 584 615E

[www.fgv.com.au](http://www.fgv.com.au)

# GIPPSLAND FRUIT GROWERS, ORCHARD WALK AND BBQ

**Time: 1.00PM  
(BBQ)**

**Date: 20/1/2012  
FRIDAY ARVO**

**BBQ to start at**

**DAVID FINGER'S  
ORCHARD,  
135 Parkinsons  
Road,  
Launching Place.**



**PAUL PRIEST: 0419 346 968**



**FREE BBQ—1.00PM  
(KINDLY SPONSORED BY  
APAL)**

- **ORCHARD WALK TO FOLLOW.**
- **LOOKING AT YOUNG JAZZ™ (M9), ROSY GLOW™ (M26), GALA (M26) AND G. SMITH (M26 & MM106)**
- **APAL ORCHARDNET DISCUSSION ALSO.**

RSVP ; 18 JAN (wed)  
MICHAEL CRISERA  
FIDO@FGV.COM.AU  
0418 379 746



**Fruit Growers Victoria**



# FGV Position Vacant



## **FIELD LIAISON OFFICER PART- TIME (0.4 FTE)**

This position would suit a person who can devote a couple of days a week to promoting the well being of fruit growers through membership of their industry association.

Preferably candidates will have a genuine interest in and a long-standing relationship with the Victorian Apple and Pear industry. Candidates who can demonstrate a strong empathy with fruit growers will be considered favourably.

This part-time hands-on position can be based anywhere in Victoria but the successful candidate will be required to visit growers' orchards in all growing districts.

The position reports directly to the General Manager. The key responsibilities include:

- Making routine and casual on-farm visits to members & prospective members.
- Promoting FGV L membership, services and events.
- Participating in industry events.
- Collection, collation and minor analysis (feedback)
- Reporting.

The position will suit a self motivated person who can work equally within a team or in an autonomous environment. To be successful you will have excellent interpersonal skills, adequate reporting skills and a friendly outgoing nature.

Suitable remuneration and compensation will be negotiated with the successful applicant.

Email a letter of application addressing the key responsibilities in this advertisement with your resume to [admin@fgv.com.au](mailto:admin@fgv.com.au) or mail to:

The Human Resources Manager  
Fruit Growers Victoria Limited  
PO Box 612  
Mooroopna 3629

A position description is available on request.

*Fruit Growers Victoria Limited is an equal opportunity employer.*



# FGV Position Vacant



## INDUSTRY DEVELOPMENT OFFICER

CONTRACT POSITION – DECIDUOUS FRUIT INDUSTRIES

This full-time hands-on position is based at Mooroopna in the Goulburn Valley and has three components which provide very interesting diversity. The major component (0.6 FTE) is responsibility for the continuing management of a technology transfer industry development project which is funded through Horticulture Australia Ltd. The other components (0.4 FTE) are the management of the FGVL integrated pest and disease management service and irrigation project management.

The position has dual reporting lines to the General Manager and Pome Fruit Development Manager.

The key responsibilities include:

- Making routine and casual on-farm visits to members & clients
- Facilitating Technology Transfer in the Goulburn Valley
- Managing Entomology Focus (Grub) Groups
- Publishing the quarterly Technical Bulletin
- Maintaining the FGVL Technical library.
- Running Grower Meetings
- Managing the FGVL field program
- Supervising casual field staff
- Monitoring pests, diseases and weather
- Providing control options advice for pest and diseases management
- Maintaining the IPDM computer data base
- Providing general agronomic advice
- Promoting FGVL field services
- Liaising with government departments and industry bodies.
- Monitoring/supervising irrigation grant projects

The position will suit a self motivated person who can work equally within a team or an autonomous environment. To be successful you will have excellent interpersonal skills, sound writing skills, experience in an on-farm research/advisory role and/or tertiary qualifications in a related field. Knowledge of integrated pest and disease management in orchard environments and on-farm irrigation systems are essential. Competence in the Microsoft Office Suite will be a distinct advantage.

A suitable remuneration package which includes a FMV is available to attract quality candidates. Email a letter of application addressing the key responsibilities in this advertisement with your resume to [admin@fgv.com.au](mailto:admin@fgv.com.au) or mail to:

The Human Resources Manager  
Fruit Growers Victoria Limited  
PO Box 612  
Mooroopna 3629

A position description is available on request. Applications close 5.00pm 27<sup>th</sup> January 2012

*Fruit Growers Victoria Limited is an equal opportunity employer .*



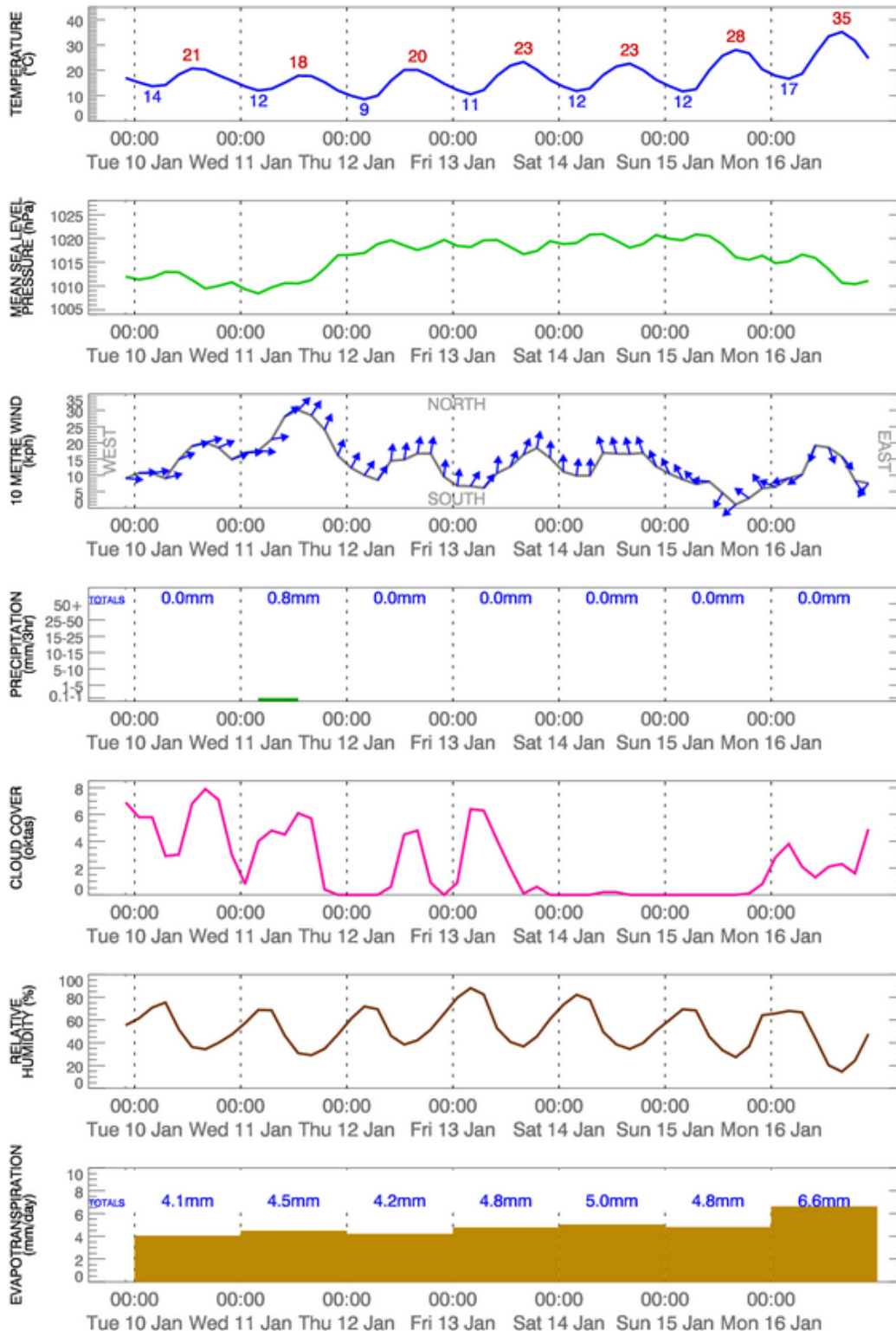
# Meteograms - BOM



Australian Government **ACCESS METEOGRAMS**  
Bureau of Meteorology

MODEL OUTPUT  
FOR THE LOCATION: Tatura (36.4°S, 145.2°E)  
TIME ZONE: EST

Meteograms are guidance material from computer predictions.  
Check Bureau forecasts and warnings for the official information.





# Meteograms - BOM



Australian Government **ACCESS METEOGRAMS**

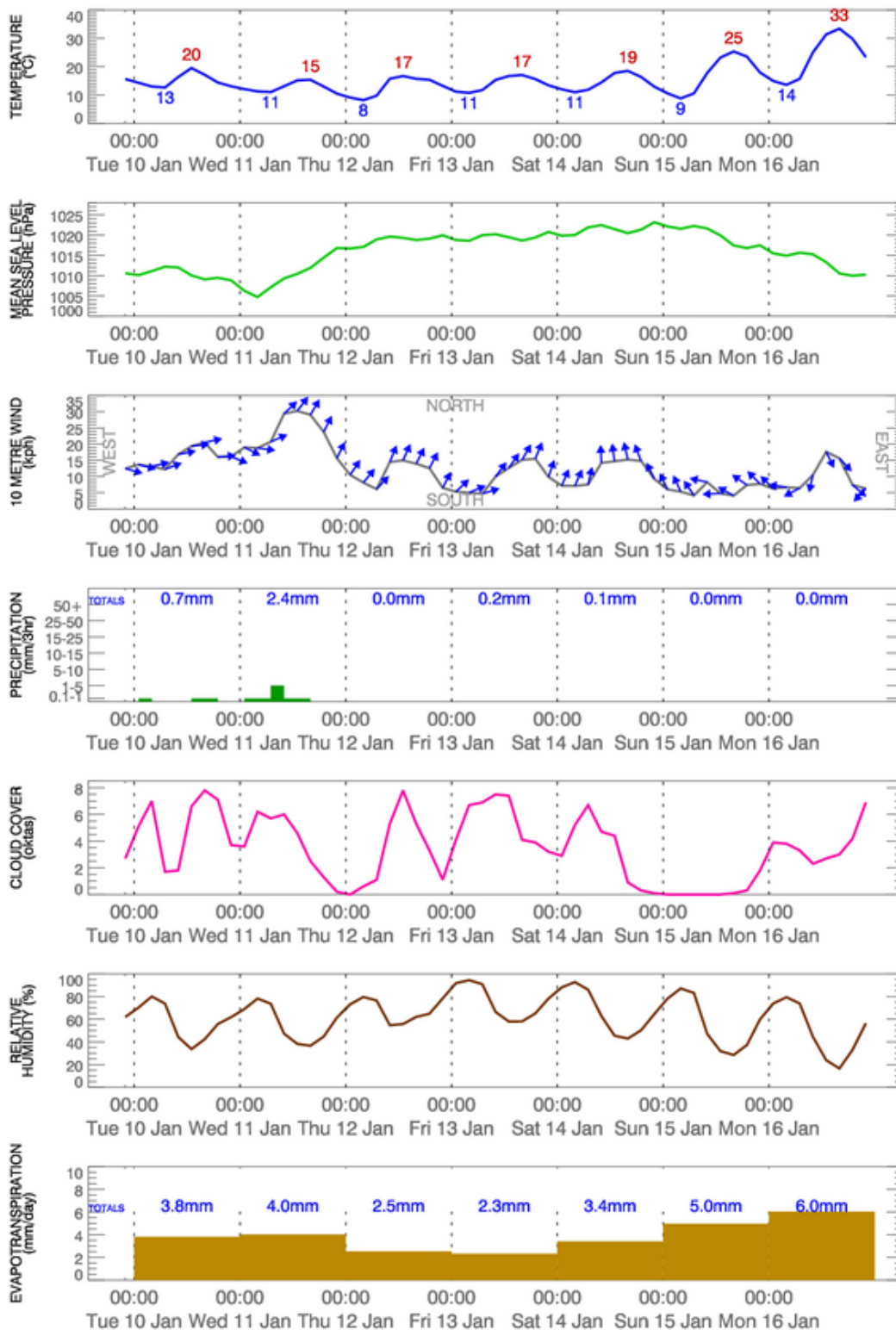
Bureau of Meteorology

MODEL OUTPUT

FOR THE LOCATION: Scoresby (37.9°S, 145.2°E)

TIME ZONE: EST

Meteograms are guidance material from computer predictions.  
Check Bureau forecasts and warnings for the official information.



10 JANUARY 2012



# CROPWATCH

## CROPWATCH REMINDERS

Volume 1, Issue 8

The advice provided in this publication is intended as a source of information only. Always read the label before using any of the products mentioned. FGVL and its employees do not guarantee that the publication is without flaw of any kind or is wholly appropriate for your particular purposes and therefore disclaims all liability for any error, loss or other consequence which may arise from you relying on any information in this publication.

## 2nd COHORT—CODLING MOTH

### CODLING MOTH

Moderate trap catches this week in Ardmona, Tatura, Shepp East and Lemnos.

#### **ARDMONA—TATURA 2ND COHORT EGG HATCH:**

23RD JANUARY 2012

#### **SHEPP EAST—LEMNOS 2ND COHORT EGG HATCH:**

23RD JANUARY 2012

#### **WANDIN (2ND GEN) EGG HATCH:**

9TH JANUARY 2012—COVER REQUIRED UNTIL 18TH FEBRUARY

#### **GIPPSLAND (2ND GEN) EGG HATCH:**

13TH JANUARY 2012—COVER REQUIRED UNTIL 22ND FEBRUARY.

#### **MORNINGTON PENINSULA (2ND GEN) EGG HATCH:**

22ND JANUARY 2012—COVER REQUIRED UNTIL 2ND MARCH.

*\*Egg hatch dates above are based on higher pressure blocks. For blocks with lower numbers a spray will be required later and the cover period will be shorter.*

### OFM

#### **3RD GENERATION EGG HATCH GOULBURN VALLEY:**

6 JANUARY 2012—COVER REQUIRED UNTIL 17TH FEBRUARY.



### Inside this issue:

EGG HATCH PREDICTIONS	1
FRUIT FLY	1
APPLES	2
PEARS	2
STONEFRUIT	2
ORCHARD PHOTOS	3
WBC MATURITY	4

### JANUARY

#### REMINDERS:

- WATCH TWO SPOTTED MITES
- WATCH 2ND COHORT CODLING MOTH NUMBERS.
- WATCH LBAM IN ALL FRUIT
- WATCH WOOLLY APHID IN APPLES, ASSESS MALI PARASITISM.
- MAINTAIN ORCHARD HYGIENE.
- CONTROL CARPOPHILUS IN STONEFRUIT.
- WATCH WESTERN FLOWER THRIP IN BETWEEN FRUIT.
- WATCH FOR RUST MITES

## FRUIT FLY

**ACT NOW**

STONEFRUIT,  
APPLES AND PEARS

This season will be a testing season for all stonefruit and pome fruit growers to achieve market access. There are no re-instatement dates in fruit growing regions. Please contact the DPI now and establish which certificate would be best for

your situation.

THE DPI FRUIT FLY HOTLINE NUMBER TO CALL IS:

**03 58245559**

# APPLES

*Fruit 45mm—70mm.*

## BLACK SPOT/ APPLE SCAB

Low to Moderate levels of scab found in all districts. Blocks with infection will need to maintain a tight spray program.



## POWDERY MILDEW

Monitor for flag shoots in more susceptible varieties. (Granny Smith, Pink Lady, Sundowner)

## WOOLLY APPLE APHID

Monitor colonies of woolly aphid. Monitor for A.Mali parasitic wasp. Parasites work best in open canopies during warmer temperatures.

## ALTERNARIA

Some Golden Del blocks and with early leaf drop, identifying type of alternaria present in the orchard is important.

## CODLING MOTH

Watch for 2nd generation numbers in trapping and 2nd cohort in the Goulburn Valley.

## LBAM

Monitor for LBAM in shoot tips and in between fruitlets.

## BRYOBIA MITE

Bryobia found on leaves close to tree centers. Monitor population and predators. Can be a good food source for predators.



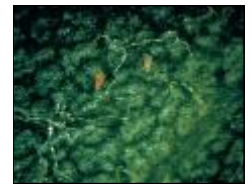
ry mites.

## TWO SPOTTED MITES

Beginning to see low levels of two spotted mites in apples. Monitor closely in blocks that have had Carbaryl chemical thinning or Synthetic Pyrethroids during blossom. Apple trees do not recover well after damage from two spotted mites.

## RUST MITE

Seeing the odd blocks with rust mite. Can cause leaf bronzing and will require control if numbers are high. Can be good prey for predators also.



# PEARS

*Fruit 55mm—75mm.*

## BLACK SPOT/PEAR SCAB

Watch for summer infection on WBC pears especially close to harvest.

## LBAM

Monitor for LBAM in between fruitlets.

## MEALYBUG

Mealybug in calyx ends of fruits are difficult to control. Look for parasitized mealybug.



## OFM

See egg hatch date for 3rd generation in January if trap numbers increase.

## CODLING MOTH

Watch 2nd generation numbers over the coming weeks. Check calyx ends of fruit for grub entry if numbers have been high over the first generation.

## BRYOBIA MITE

Not seeing high numbers of bryobia in pears this season, can be higher in Josephines.

## RUST MITE

Monitor closely if block has a history of rust mite. Scan tops of leaves and around calyx ends of fruit for rust

mite.

## TWO SPOTTED MITES

WBC have a lower tolerance to mites than other varieties. Leaf burn are not always from two spotted mites.



*'leaf burn in pears are not always from two spotted mites'*

# STONEFRUIT

## OFM

Prepare to apply cover for 3rd GEN egg hatch in January.

## CARPOPHILUS BEETLE

Monitor for carpophilus beetle to get an understanding of your orchard population. Maintain good orchard hygiene to help control population. Put out your attractant and kill traps at least 6 weeks prior to harvest. Use high water volumes if a spray is needed.

## LBAM

Monitor for LBAM caterpillars in shoot tips and in between fruit.

## BROWN ROT

Maintain good orchard hygiene to reduce inoculum and potential infection sites. Thin fruitlets off bark and avoid clumps of fruit.

## SHOTHOLE

Watch for leaf shothole like symptoms in cool wet spring conditions.

## BRYOBIA MITE

Monitor for nymphs on the undersides of limbs and leaves.

## TWO SPOTTED MITES

Odd blocks with two spotted mites now.

## WESTERN FLOWER THRIP

Watch for juveniles feeding in between mature smooth skin stone fruit.



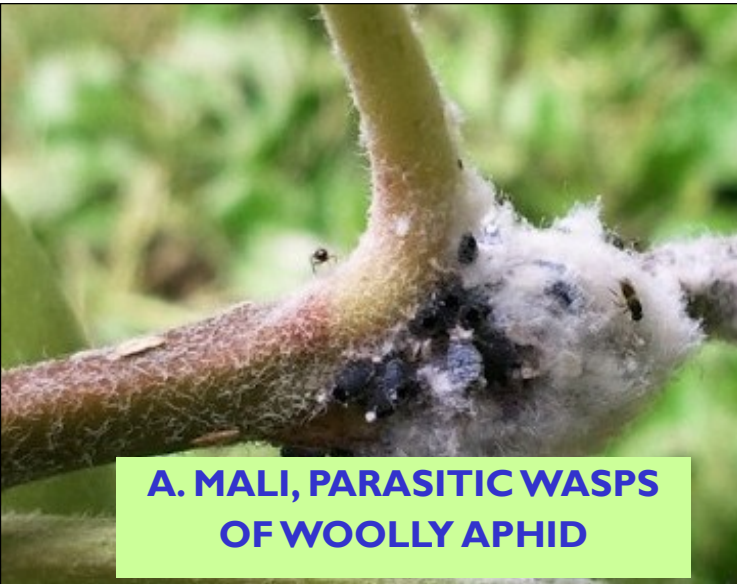
# ORCHARD PHOTOS JAN 2012



**ALTERNARIA OR MAGNESIUM?**



**PARASITISED WOOLLY**



**A. MALI, PARASITIC WASPS OF WOOLLY APHID**



**SILVERING FROM WFT**



**TWO SPOTTED MITE**

**WILLIAMS PEARS Maturity Test**

DISTRICT		SAMPLE		DATE	
TATURA				10/01/2012	
SAMPLE	SIZE	(side a)	(side b)	PLATE	SUGAR
	(Diameter. mm)			(1-6)	(oBrix)
1	67.0	8.5	9.0	0.0	11.0
2	72.0	7.5	8.5	0.0	11.0
3	72.0	7.5	8.5	0.0	12.0
4	72.0	8.0	8.5	0.0	11.5
5	70.0	8.0	8.5	0.0	11.0
6	70.0	8.0	8.0	0.0	12.0
7	70.0	8.0	8.5	0.0	12.0
8	74.0	8.0	8.5	0.0	12.0
9	70.0	8.5	9.0	0.0	12.0
10	71.0	9.0	9.5	0.0	11.0
<b>AVG</b>	<b>70.8</b>	<b>8.4</b>			<b>11.6</b>

**WILLIAMS PEARS Maturity Test**

DISTRICT		SAMPLE		DATE	
SHEPPARTON EAST				10/01/2012	
SAMPLE	SIZE	(side a)	(side b)	PLATE	SUGAR
	(Diameter. mm)			(1-6)	(oBrix)
1	70.0	8.0	8.5	0.0	12.0
2	67.0	8.5	8.5	0.0	12.5
3	67.0	8.0	8.5	0.0	12.0
4	63.0	9.0	9.5	0.0	12.0
5	68.0	9.0	9.0	0.0	10.0
6	65.0	9.0	9.0	0.0	11.0
7	66.0	8.0	8.5	0.0	11.0
8	68.0	8.0	8.5	0.0	11.5
9	62.0	10.0	10.0	0.0	12.5
10	62.0	8.5	9.5	0.0	13.0
<b>AVG</b>	<b>65.8</b>	<b>8.8</b>			<b>11.8</b>

**WILLIAMS PEARS Maturity Test**

DISTRICT		SAMPLE		DATE	
ARDMONA				10/01/2012	
SAMPLE	SIZE	(side a)	(side b)	PLATE	SUGAR
	(Diameter. mm)			(1-6)	(oBrix)
1	66.0	9.0	9.5	0.0	13.0
2	67.0	9.0	9.0	0.0	12.5
3	63.0	9.0	11.0	0.0	13.5
4	65.0	8.5	9.0	0.0	13.0
5	65.0	8.5	9.5	0.0	13.0
6	63.0	10.0	10.0	0.0	14.0
7	60.0	10.0	10.0	0.0	13.0
8	64.0	9.0	9.0	0.0	13.5
9	65.0	9.5	9.5	0.0	13.0
10	63.0	9.0	9.0	0.0	13.0
<b>AVG</b>	<b>64.1</b>	<b>9.4</b>			<b>13.2</b>

CA GUIDELINES	FIRMNESS (KG)	SUGARS (BRIX)
LTCA—MID JUNE	8.0KG — 8.6KG	11.7—12.3
MTCA-EARLY APRIL	7.0KG—7.9KG	12.4—13.9
STCA-EARLY MARCH	5.6KG—7.0KG	13—14.2

\*TAKE INTO CONSIDERATION BACKGROUND COLOUR WHEN ASSESSING MATURITY OF PEARS.

MATURITY PARAMETERS TAKEN FROM APPLE AND PEAR MATURITY ASSESSMENT-REPRINTED 2011,  
COLIN R. LITTLE.



# Dates to Remember

## **Tuesday, February 21, 2012 from 9.30am to 3.30pm**

DPI - Victoria - Feeding Asia's Demand Event. Theatrette, Mezzanine Level, 1 Spring Street, Melbourne. RSVP by February 10 to Cathy Mulligan on (03) 5258 0229 or email: cathy.mulligan@dpi.vic.gov.au.

## **June 3-8 2012**

Institute of Food and Grocery Management, Produce Executive Program See Flyer page 9 for further details.

## **Friday 20th January 2012 from 1pm**

Gippsland Fruit Grower's Orchard Walk and BBQ. DAVID FINGER'S ORCHARD, 135 Parkinsons Road, Launching Place.

# Classifieds.....

## **ALUMINIUM PICKING LADDERS FOR SALE**

2.7m (9ft)

Light weight to increase picker productivity and a wide base to improve picker safety.

Made by Transtak (NZ).

4 years old and in excellent condition.

\$200 each

**Ph 03 5829 0002.**

PLEASE CLICK ON THE FOLLOWING LINKS FOR MORE INFORMATION.....



CLICK ON THIS LINK TO LIKE THE AUSSIE APPLE PAGE ON FACEBOOK!



CLICK ON THIS LINK TO LIKE THE AUSSIE PEARS PAGE ON FACEBOOK!