

Core Facts

Vol 8.04

24th January 2012

In This Issue

[Fruit Fly Outbreak Notice](#)

[Market Report](#)

[Dates to Remember](#)

[BOM - Meteograms](#)

[Orchard Action - Cropwatch](#)

[Classifieds](#)

**FRUIT FLY
OUTBREAK
ZEERUST**

NOTIFICATION OF A QUEENSLAND FRUIT FLY OUTBREAK AT ZEERUST
As a result of a Queensland fruit fly outbreak at ZEERUST, a 15km restricted area (see map) is in place which affects the movement of fruit throughout Victoria.

....[Click here for more info.](#)

Our Affiliates



Agrisearch Services
Agricultural and Biological Research Services



Market prices provided by the Melbourne Market as at 20/01/12

APPLES

LOW H

**IGH AVERAGE
12kg Cartons**

	\$	\$	\$
Fuji	30	40	32.58
Golden Delicious	32	45	36.09
Granny Smith	28	40	31.59
Pink Lady	22	36	26.10
Red Delicious	22	30	26.00
Royal Gala	35	45	40.00
Sundowner	24	30	27.00

APRICOTS

5kg Carton	20	30	25.00
Large 10kg	10	35	22.50

NECTARINERS

White Flesh 10kg Carton	10	25	15.10
White Flesh 5kg Tray	10	20	15.00
Yellow Flesh 10kg Carton	10	30	15.15
Yellow Flesh 5kg Carton	10	25	15.10

PEACHES

White Flesh 5kg Tray	16	20	17.03
Yellow Flesh 10kg Carton	10	20	15.00
Yellow Flesh 5kg Tray	10	20	15.00
Cling Stone DL Tray	15	30	22.50

PEARS 13kg Carton

B.Bosc	15	25	20.00
Corella 18L Carton	20	24	20.04
Corella SL Tray	16	20	17.03
Packham Triumph	12	20	16.00

PLUMS

9L Carton	15	45	27.68
-----------	----	----	-------

Dates To Remember

Tuesday, February 21, 2012 from 9.30am to 3.30pm

DPI - Victoria - Feeding Asia's Demand Event. Theatre, Mezzanine Level, 1 Spring Street, Melbourne. RSVP by February 10 to Cathy Mulligan on (03) 5258 0229 or email: cathy.mulligan@dpi.vic.gov.au.

March 1st and 2nd 2012

Victorian Cherry Conference - "Review the Season & Plan for the Future" Seminars, tradeshow, field day and workshops held in the Wangaratta region. [Click here for more information](#) and [registration forms](#) or contact the Victorian Cherry Association on ph: 58253700, em: info@cherries.org.au or web: www.cherries.org.au

March 16th 17th 18th

Women on Farms, Buchan, [Click here for more information](#) and [registration forms](#).



BOM - Meteograms



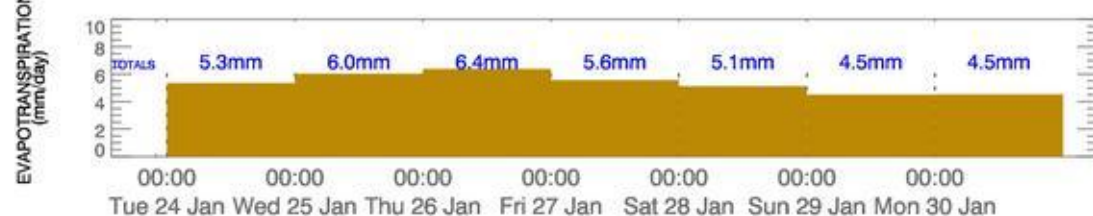
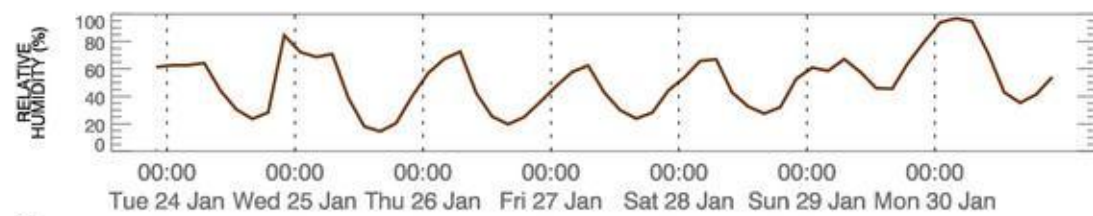
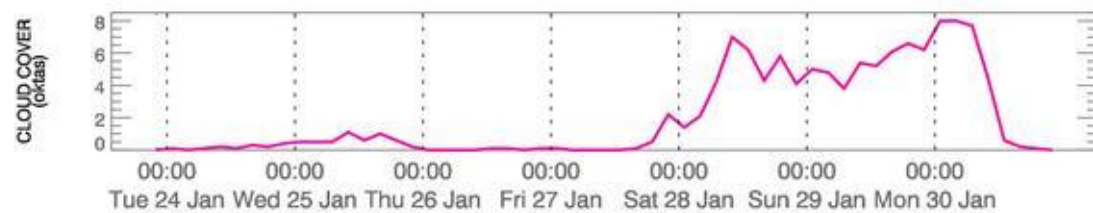
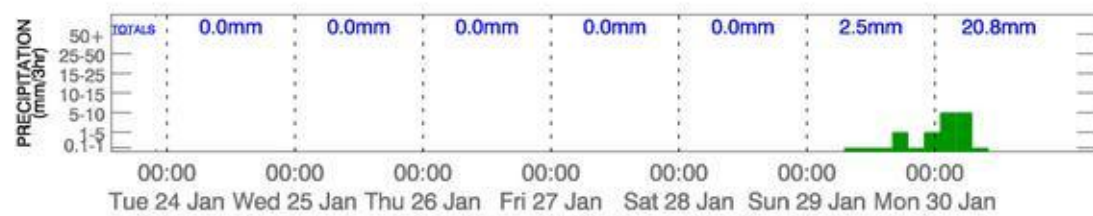
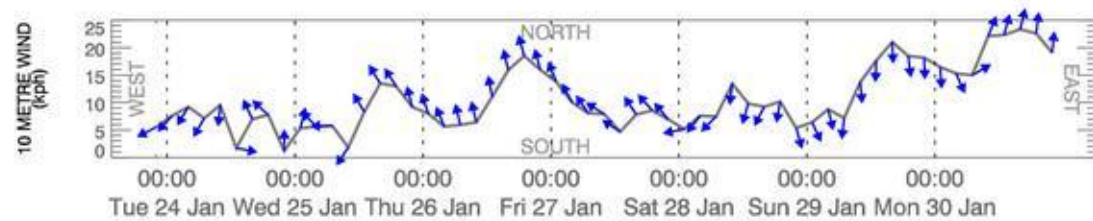
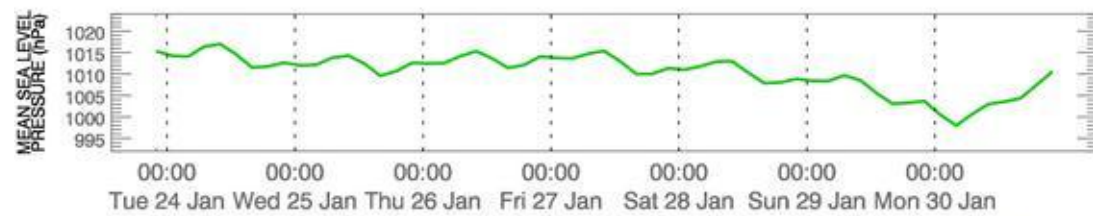
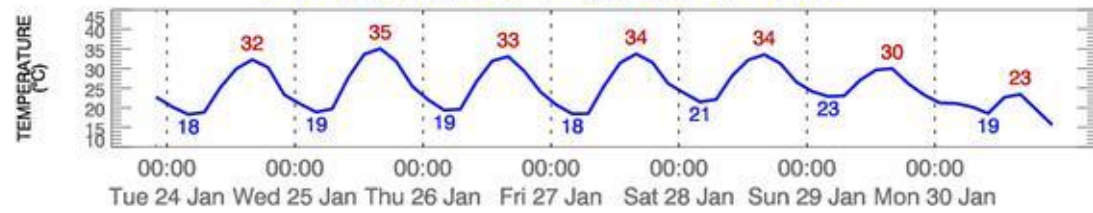
Australian Government ACCESS METEGRAMS
Bureau of Meteorology

MODEL OUTPUT

FOR THE LOCATION: Tatura (36.4°S, 145.2°E)

TIME ZONE: EST

Meteograms are guidance material from computer predictions.
Check Bureau forecasts and warnings for the official information.



© 2012 Commonwealth of Australia, Bureau of Meteorology

Atmosphere Control Systems



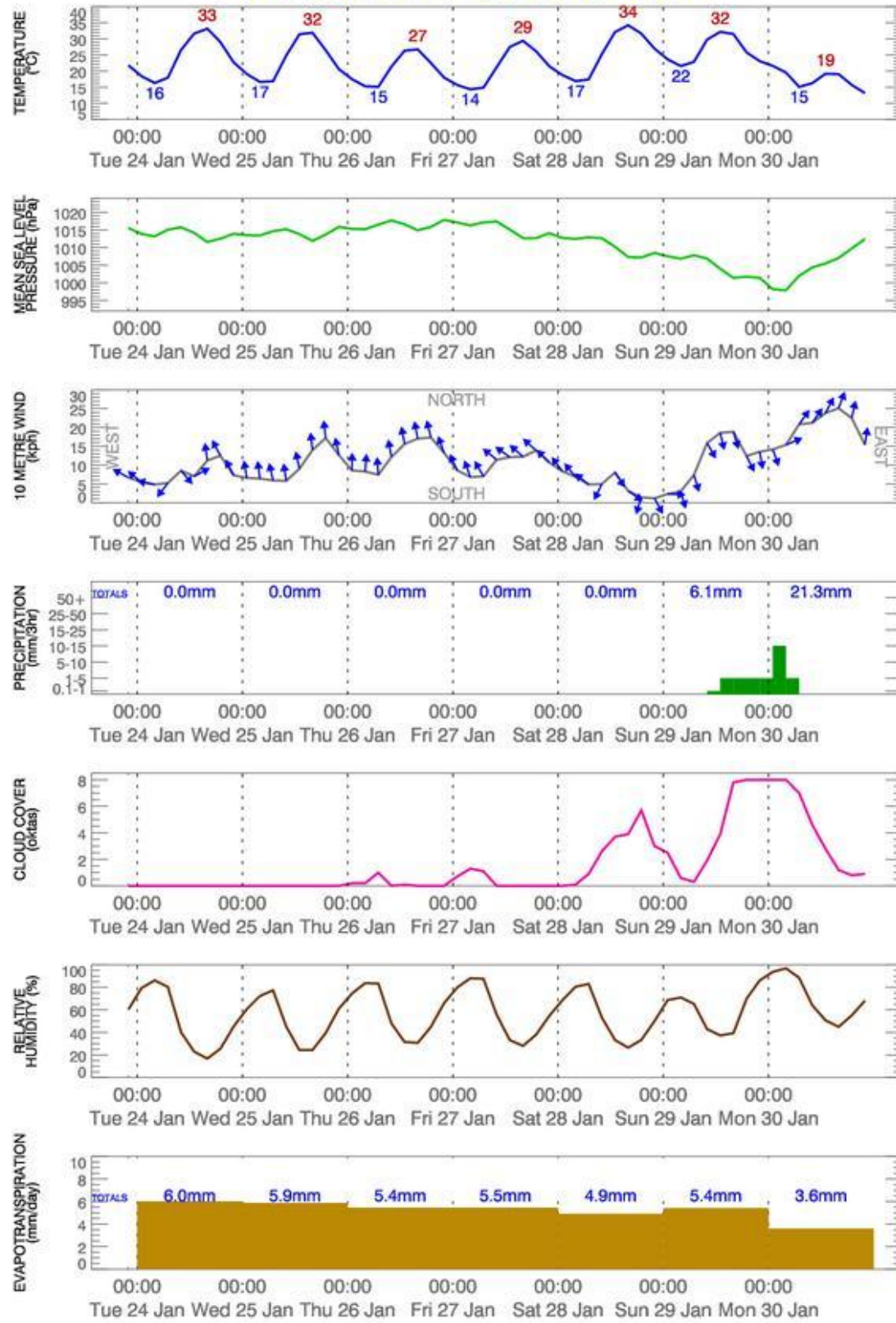
Shepparton Distilleries



Australian Government Bureau of Meteorology ACCESS METEOGRAMS

MODEL OUTPUT
FOR THE LOCATION: Scoresby (37.9°S, 145.2°E)
TIME ZONE: EST

Meteograms are guidance material from computer predictions.
Check Bureau forecasts and warnings for the official information.





CROPWATCH

CROPWATCH REMINDERS

Volume 1, Issue 9

The advice provided in this publication is intended as a source of information only. Always read the label before using any of the products mentioned. FGVL and its employees do not guarantee that the publication is without flaw of any kind or is wholly appropriate for your particular purposes and therefore disclaims all liability for any error, loss or other consequence which may arise from you relying on any information in this publication.

3RD GENERATION—CODLING MOTH

CODLING MOTH

Low trap catches this week in Ardmona, Tatura, Shepp East and Lemnos.

ARDMONA—TATURA 3RD GENERATION EGG HATCH:

6TH FEBRUARY 2012

SHEPP EAST—LEMNOS 3RD GENERATION EGG HATCH:

9TH FEBRUARY 2012

WANDIN—3RD GENERATION EGG HATCH:

3RD MARCH 2012

GIPPSLAND—3RD GENERATION EGG HATCH:

10TH MARCH 2012

MORNINGTON PENINSULA—3RD GENERATION EGG HATCH:

16TH MARCH 2012

**Egg hatch dates above are based on higher pressure blocks. For blocks with lower numbers a spray will be required later and the cover period will be shorter.*

OFM

3RD GENERATION EGG HATCH GOULBURN VALLEY:

8TH FEBRUARY 2012.



Inside this issue:

EGG HATCH PREDICTIONS	1
FRUIT FLY	1
APPLES	2
PEARS	2
STONEFRUIT	2
ORCHARD WALK PHOTOS	3
WBC MATURITY	4

JANUARY

REMINDERS:

- WATCH TWO SPOTTED MITES
- WATCH LBAM IN ALL FRUIT
- WATCH WOOLLY APHD IN APPLES, ASSESS NALP PARASITISM.
- MAINTAIN ORCHARD HYGIENE.
- CONTROL CARPOPHILUS IN STONEFRUIT.
- WATCH WESTERN FLOWER THRP IN BETWEEN FRUIT.
- WATCH FOR RUST MITES
- WATCH BRYOBIA MITES
- ASSESS MEALYDUG LEVELS IN PEARS

FRUIT FLY



This season will be a testing season for all stonefruit and pome fruit growers to achieve market access. There are no re-instatement dates in fruit growing regions. Please contact the DPI [now](http://www.dpi.nsw.gov.au) and establish

which certificate would be best for your situation.

THE DPI FRUIT FLY HOTLINE NUMBER TO CALL IS:

03 58245559

STONEFRUIT,
APPLES AND PEARS

APPLES

Fruit 55mm—72mm.

BLACK SPOT/ APPLE SCAB

Low to Moderate levels of scab found in all districts. Watch blocks with infection close to harvest.



POWDERY MILDEW

Monitor for flag shoots in more susceptible varieties. (Granny Smith, Pink Lady, Sundowner)

WOOLLY APPLE APHID

Monitor colonies of woolly aphid. Monitor for A.Mali parasitic wasp. Parasites work best in open canopies during warmer temperatures.

ALTERNARIA

Some Golden Del blocks with early leaf drop. Identifying type of alternaria present in the orchard is important.



CODLING MOTH

Watch for 3rd generation numbers in trapping, and when assessing damage inspect inside fruit and note Codling grub size.

LBAM

Monitor for LBAM in shoot tips and in between fruit.

BRYOBIA MITE

Bryobia found on leaves close to tree centers. Monitor population and pred-

ators. Can be a good food source for predatory mites.

TWO SPOTTED MITES

Beginning to see low levels of two spotted mites in apples. Monitor closely in blocks that have had Carbaryl chemical thinning or Synthetic Pyrethroids during blossom. Apple trees do not recover well after damage from two spotted mites.

RUST MITE

Seeing the odd blocks with rust mite. Can cause leaf bronzing and will require control if numbers are high in young plantings. Can be good prey for predators also.



PEARS

Fruit 65mm—80mm.

BLACK SPOT/PEAR SCAB

Watch for summer infection on WBC pears especially after a rain event close to harvest in infected blocks.

LBAM

Monitor for LBAM in between fruit.



MEALYBUG

Mealybug in calyx ends of fruits are difficult to control. Look for parasitized mealybug.

OFM

See egg hatch date for 4th generation in February if trap numbers increase.

Numbers always higher in Bosc.

CODLING MOTH

Watch for 3rd generation numbers over the coming weeks. Check calyx ends of fruit for grub entry if numbers have been high over the first generation.

BRYOBIA MITE

Not seeing high numbers of bryobia in pears this season, can be higher in Josephines.

RUST MITE

Monitor closely if block has a history of rust mite. Scan tops of leaves and around calyx ends of fruit for rust mite.

TWO SPOTTED MITES

WBC have a lower tolerance to mites than other varieties. Leaf burn are not always from two spotted mites. Use high water volumes if a control is needed.



'monitor for LBAM in between fruit'

STONEFRUIT

OFM

Prepare to apply cover for 4th GEN egg hatch in February.

CARPOPHILUS BEETLE

Monitor for carpophilus beetle to get an understanding of your orchard population. Maintain good orchard hygiene to help control population. Put out your attractant and kill traps at least 6 weeks prior to harvest. Use high water volumes if a spray is needed.

LBAM

Monitor for LBAM caterpillars in shoot tips and in between fruit.

BROWN ROT

Maintain good orchard hygiene to reduce inoculum and potential infection sites. Thin fruitlets off bark and avoid leaving clumps of fruit.

BRYOBIA MITE

Monitor for nymphs on the undersides of limbs and leaves.

TWO SPOTTED MITES

Odd blocks with two spotted mites now.

WESTERN FLOWER THRIP

Watch for juveniles feeding in between mature smooth skin stone fruit.



SAN JOSE SCALE

Watch for late season San Jose Scale on backs of leaves and fruit.

GIPPSLAND FRUITGROWERS
ORCHARD WALK PHOTOS 20 JAN 2012
DAVID FINGER'S, LAUNCHING PLACE/HODDLES CREEK.



Fruit Growers Victoria



Horticulture Industry Network



BIRD NET



ORCHARDNET PRESENTATION



PLATFORM DEMO



WILLIAMS PEARS Maturity Test						WILLIAMS PEARS Maturity Test							
DISTRICT		SAMPLE			DATE		DISTRICT		SAMPLE			DATE	
ARDMONA					23/01/2012		TATURA					23/01/2012	
SAMPLE	SIZE	(side a)	(side b)	PLATE	SUGAR	SAMPLE	SIZE	(side a)	(side b)	PLATE	SUGAR		
	(Diameter mm)						(Diameter mm)						
1	75.0	7.0	7.5	0.0	14.0	1	74.0	7.0	7.5	0.0	13.5		
2	73.0	6.5	6.5	0.0	15.0	2	71.0	6.5	6.5	0.0	14.0		
3	81.0	7.5	7.5	0.0	12.5	3	71.0	6.5	6.5	0.0	13.5		
4	72.0	7.5	8.0	0.0	12.5	4	74.0	6.5	6.5	0.0	13.5		
5	79.0	7.0	7.0	0.0	14.5	5	73.0	8.0	8.0	0.0	12.5		
6	73.0	8.0	8.0	0.0	13.5	6	67.0	8.0	6.5	0.0	13.5		
7	78.0	7.0	7.0	0.0	13.0	7	80.0	7.5	8.0	0.0	13.0		
8	70.0	7.5	9.0	0.0	14.0	8	77.0	7.5	7.5	0.0	13.0		
9	73.0	8.0	7.0	0.0	13.5	9	75.0	8.5	7.5	0.0	12.0		
10	71.0	8.5	8.5	0.0	13.0	10	72.0	7.5	6.5	0.0	14.0		
AVG	74.5	7.5			13.6	AVG	73.4	7.2			13.3		

WILLIAMS PEARS Maturity Test



DISTRICT		SAMPLE			DATE	
SHEPPARTON EAST					23/01/2012	
SAMPLE	SIZE	(side a)	(side b)	PLATE	SUGAR	
	(Diameter mm)					
1	72.0	8.0	9.0	0.0	11.5	
2	74.0	8.0	7.5	0.0	12.0	
3	69.0	8.5	8.5	0.0	13.0	
4	74.0	8.0	7.5	0.0	12.0	
5	76.0	8.0	7.5	0.0	11.5	
6	76.0	8.0	7.5	0.0	12.5	
7	81.0	9.0	8.5	0.0	11.5	
8	78.0	8.5	8.5	0.0	12.5	
9	77.0	8.5	8.0	0.0	13.0	
10	68.0	8.0	8.5	0.0	11.5	
AVG	74.5	8.2			12.1	



CA GUIDELINES	FIRMNESS (KG)	SUGARS (BRIX)
LTCA—MID JUNE	8.0KG — 8.6KG	11.7—12.3
MTCA-EARLY APRIL	7.0KG—7.9KG	12.4—13.9
STCA-EARLY MARCH	5.6KG—7.0KG	13—14.2

*TAKE INTO CONSIDERATION BACKGROUND COLOUR WHEN ASSESSING MATURITY OF PEARS.

MATURITY PARAMETERS TAKEN FROM *APPLE AND PEAR MATURITY ASSESSMENT-REPRINTED 2011, COLIN R. LITTLE.*

Classifieds

Primary Producers - \$5,500 In Funding Available – Don't Miss Out!

\$5,500 in Government funding is now available to assist primary producers to manage the impacts of climate change within their business. If you are experiencing financial hardship caused by previous season's of drought, then take advantage of this once off opportunity.

The grant may be used for a range of activities, including but not limited to:

- Soil sciences (soil quality)
- Farm water planning (reduced irrigation strategies)
- Sustainable management (address salinity, erosion, water retention)
- Chemical management
- Agronomy
- Business skills (budgeting and profit planning, taxation advice, succession planning and business structure options)

Affiliate partner, Frank Papallo from Corbetts Chartered Accountants in Shepparton has said "it's surprising to note the number of primary producers in the area that are not aware of the assistance on offer and the broad range of expenditure it can be used for".

Applications for the grant cease on the 11th May 2012.

Corbetts have already completed a number of applications for eligible farmers and are offering assistance to all FGV members. If you would like further information or assistance with your application please contact our affiliate partner Frank Papallo from Corbetts Chartered Accountants & Advisors in Shepparton on the details listed below:

P. 5820 1300

A. 193A Corio St, Shepparton

E. frankp@corbetts.com.au

W. www.corbetts.com.au

Bin Drench plant required

Second hand unit that is sound
and in good working order.

Phone Craig Boyce
on 0447 937 002

Wanted to Buy

Automatic Bin Tipper/Float tank,
elevator, sorting table and
brushes, suitable for apples.

Stainless Steel Tanks 7000 to
12000 litres, refrigerated, must
have cone bottom, agitator, side
and top entry.

Telephone Ross BH 03 57551318
or AH 03 57551787

"You can still cover this season's crop"



DRAPE NET HAS NOW PROVEN IT CAN WITHSTAND SOME OF THE WORST THAT MOTHER NATURE CAN THROW AT IT

- The most cost-effective form of netting tree crops • No contractors needed • Easy and quick to use
- Works for hail, birds, bats, sunburn, wind damage • Conceived by an orchardist and used on our own properties for 8 years • Drape Net is committed to Customer Service, Quality Product, Training & Advice, Product Development and the Right Price



FOR MORE INFORMATION
CALL MICHAEL CUNIAL ON
0415 663 413
email m.cunial@bigpond.com





Fruit Growers Victoria | PO Box 612 | Mooroopna | VIC | 3629 |

office@fgv.com.au www.fgv.com.au



Try it FREE today.

This email was sent to office@fgv.com.au by office@fgv.com.au |
[Update Profile/Email Address](#) | Instant removal with [SafeUnsubscribe™](#) | [Privacy Policy](#).
Fruit Growers Victoria | PO Box 612 | Mooroopna | VIC | 3629 | Australia