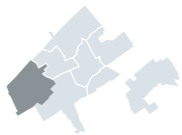


Loosduinen					Escamp					Scheveningen					Segbroek				
2006	2007	2008	2009	2010	2006	2007	2008	2009	2010	2006	2007	2008	2009	2010	2006	2007	2008	2009	2010
65,6	74,0	79,0	77,4	75,7	68,7	74,3	71,2	68,8	72,6	77,2	80,3	77,7	80,2	75,2	59,7	60,6	61,6	64,9	72,0
83,0	88,4	88,7	87,6	85,7						6,6	6,8	7,6	6,4	7,1	4,3	5,1	5,2	4,5	4,8
5,7	5,2	5,5	6,3	5,6	6,6	7,1	6,2	7,2	6,6	6,8	7,6	6,4	7,1	4,3	5,1	5,2	4,5	4,6	4,8
8,2	8,6	8,6	8,9	7,1						2,0	0,9	1,1	0,8	0,9	0,8	1,8	1,3	1,1	1,7
1,3	0,8	1,0	1,3	1,7	2,4	1,7	1,5	1,6	2,0	0,9	1,1	0,8	0,9	0,8	1,8	1,3	1,1	1,7	1,7
2,5	2,0	1,6	2,0	2,2						44,2	53,7	54,3	53,9	56,4	47,1	40,8	40,6	42,3	47,7
42,8	51,1	59,5	55,7	48,1	46,8	49,2	49,7	47,9	44,2	53,7	54,3	53,9	56,4	47,1	40,8	40,6	42,3	47,7	44,9
55,9	59,8	60,9	60,7	53,7						9,2	11,9	13,4	12,5	11,6	10,3	8,9	10,6	11,2	8,8
11,5	13,1	10,3	9,4	9,6	9,6	12,9	10,6	9,1	9,2	11,9	13,4	12,5	11,6	10,3	8,9	10,6	11,2	8,8	11,1
11,2	12,9	12,3	10,7	10,7						59,3	46,5	45,2	43,1	47,0	40,3	48,8	48,5	48,0	46,6
38,2	39,1	40,2	42,2	36,1	55,8	59,7	60,5	63,5	59,3	46,5	45,2	43,1	47,0	40,3	48,8	48,5	48,0	53,8	46,6
54,3	56,0	58,1	60,1	56,7						11,4	13,7	14,0	10,7	12,1	8,8	11,0	12,8	11,0	13,3
13,8	14,4	13,6	14,4	11,0	12,3	13,9	13,1	14,8	11,4	13,7	14,0	10,7	12,1	8,8	11,0	12,8	11,0	13,3	9,2
12,4	13,9	12,7	13,9	11,7															



Loosduinen



Escamp

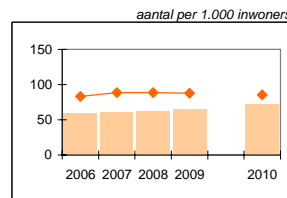
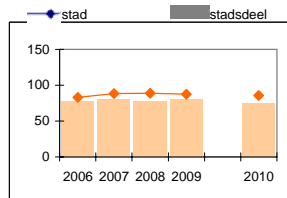
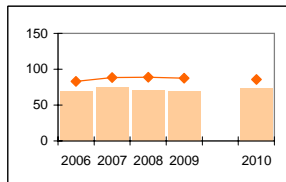
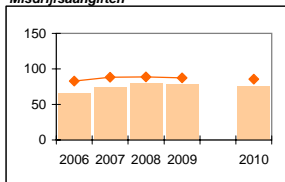


Scheveningen

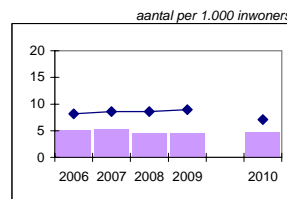
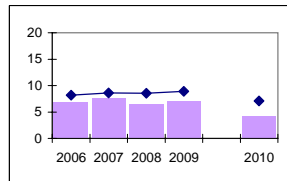
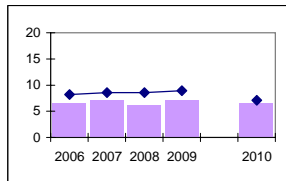
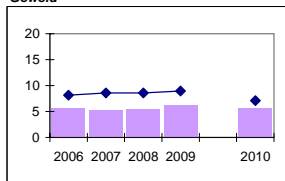


Segbroek

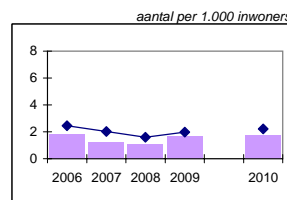
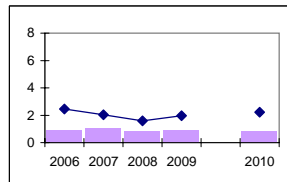
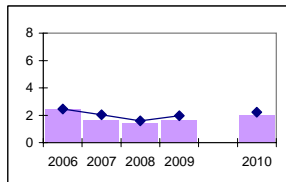
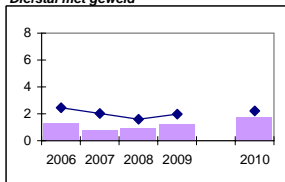
Misdrijfsaangiften



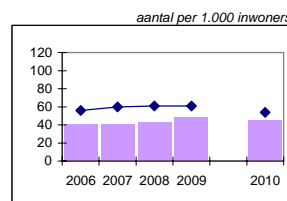
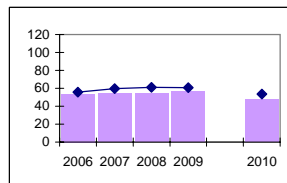
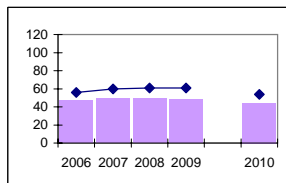
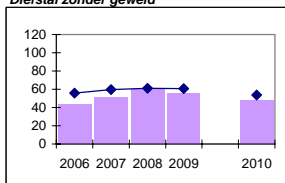
Geweld



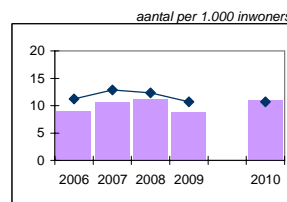
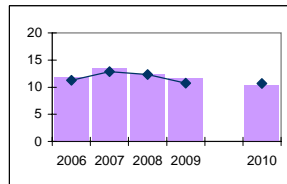
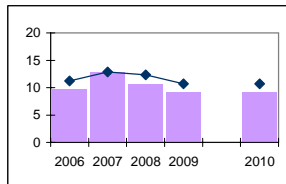
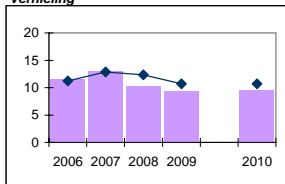
Diefstal met geweld



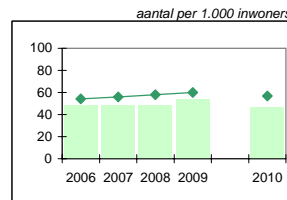
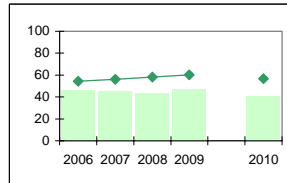
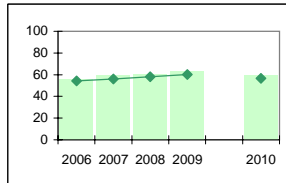
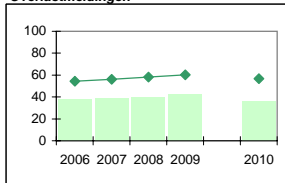
Diefstal zonder geweld



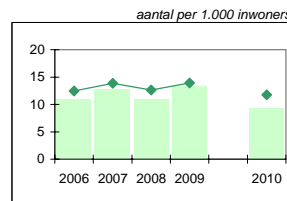
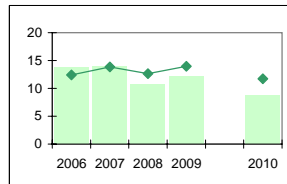
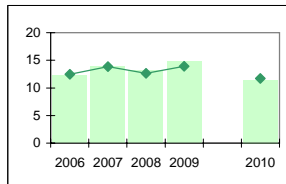
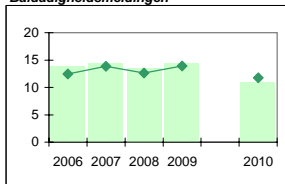
Vernieling



Overlastmeldingen



Baldadigheidsmeldingen



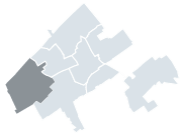
Bron voor bovenstaande grafieken: Genesys voor 2006 t/m 2009 en BHV voor 2010
 Aantal seksuele delicten is te gering om grafieken van te maken

2008	2009	2010
31,5	31,8	29,4
35,2	33,9	35,3
29,7	33,2	23,5
27,4	25,0	26,4
28,4	30,1	34,6
33,7	35,0	37,4
2,8	3,8	3,1
5,5	6,2	6,8

2008	2009	2010
34,6	33,0	34,2
24,7	22,8	25,4
37,4	41,6	40,0
7,4	8,8	9,8

2008	2009	2010
41,4	38,9	41,7
29,4	18,1	33,8
30,1	29,5	33,3
2,4	3,2	5,8

2008	2009	2010
30,6	30,5	21,2
24,1	17,4	20,2
23,0	22,3	29,0
3,8	2,0	2,8



Loosduinen



Escamp

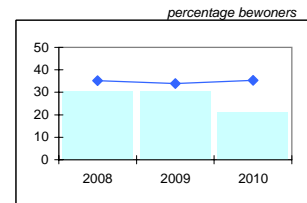
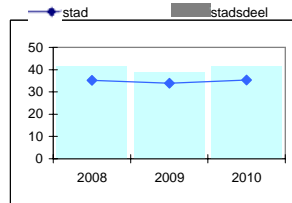
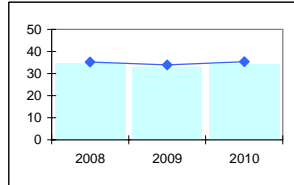
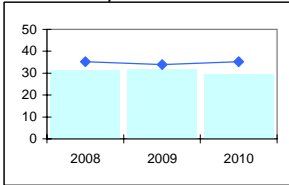


Scheveningen

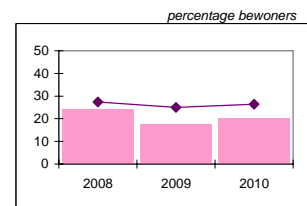
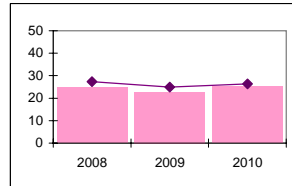
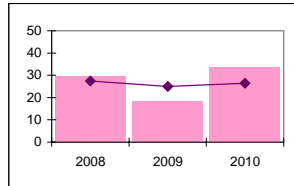
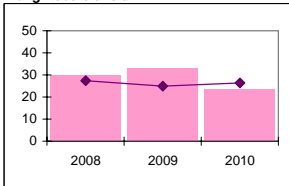


Segbroek

Slachtofferschap

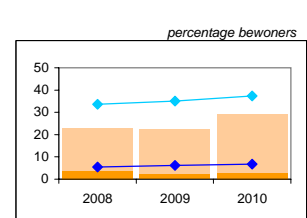
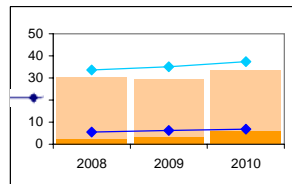
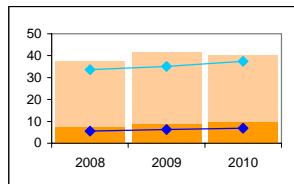
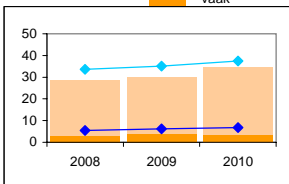


Aangiftebereidheid



Onveiligheidsgevoel

wel eens vaak



Bron voor de bovenstaande grafieken: Integrale Veiligheidsmonitor 2008, 2009 en 2010

Centrum					Laak					Haagse Hout					Leidschenveen-Ypenburg					
2006	2007	2008	2009	2010	2006	2007	2008	2009	2010	2006	2007	2008	2009	2010	2006	2007	2008	2009	2010	
136,2	152,0	155,6	151,5	135,9	87,2	88,8	89,0	86,0	91,2	72,9	70,5	69,9	74,6	79,2	38,4	40,9	44,3	43,9	49,7	
13,8	14,4	16,4	16,8	12,9	11,1	12,0	12,2	11,4	8,4	6,6	7,1	7,1	7,3	5,4	5,4	5,7	6,1	5,1	3,5	
5,2	4,7	3,3	4,6	4,9	2,6	2,3	1,8	1,6	2,0	1,6	1,5	1,0	1,2	1,4	0,5	0,5	0,5	0,4	0,5	
92,3	108,1	108,2	103,9	87,6	55,7	54,4	56,0	55,8	53,4	50,5	47,6	48,3	53,8	52,1	21,0	22,1	26,2	28,0	30,0	
14,8	15,6	17,8	15,5	14,1	12,3	14,4	14,0	12,1	12,1	9,9	10,0	9,2	8,1	10,0	9,0	9,8	9,4	7,9	7,5	
77,6	80,7	89,4	87,9	90,1	66,8	72,2	76,5	73,3	76,3	40,4	37,8	39,6	42,6	39,5	29,9	33,1	33,0	36,6	28,6	
12,9	15,4	15,4	16,7	18,0	13,0	12,0	11,9	11,0	12,0	7,5	8,7	6,9	6,7	6,0	15,5	18,4	15,3	17,9	11,6	



Centrum



Laak

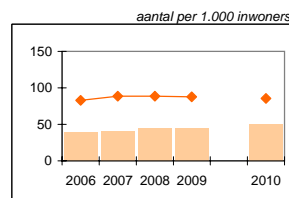
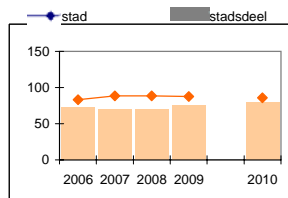
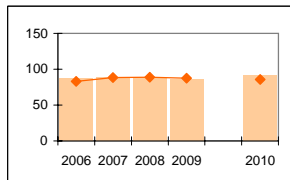
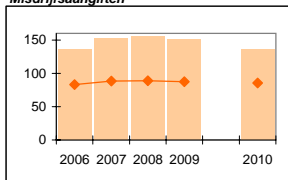


Haagse Hout

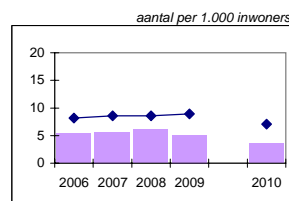
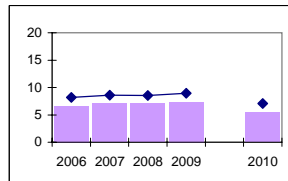
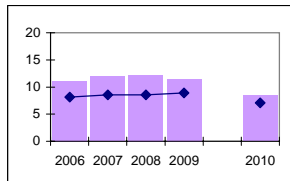
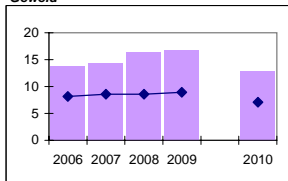


Leidschenveen - Ypenburg

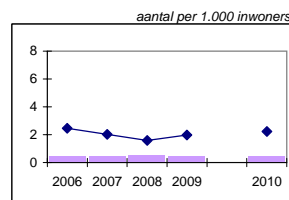
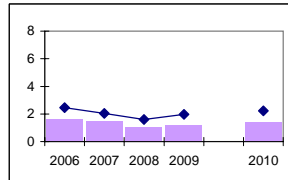
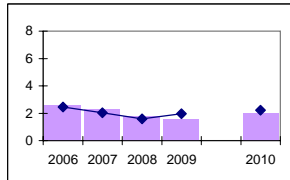
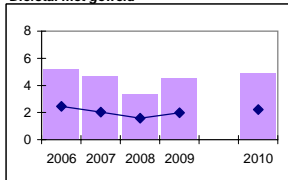
Misdrijsaangiften



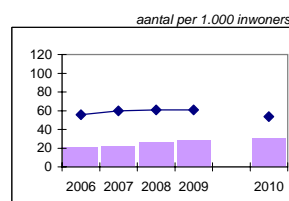
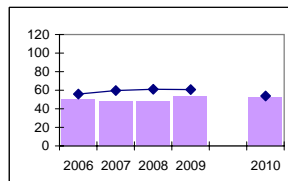
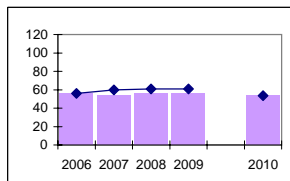
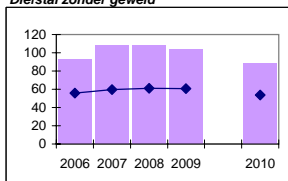
Geweld



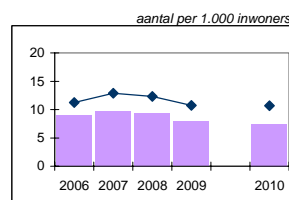
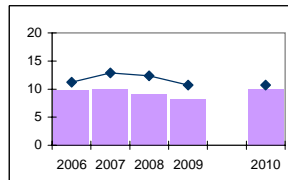
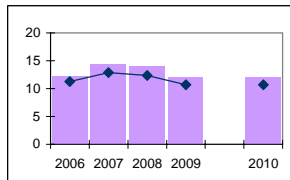
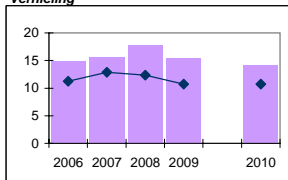
Diefstal met geweld



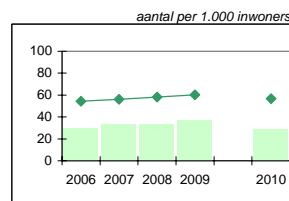
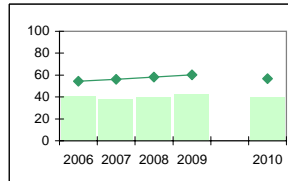
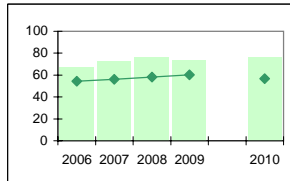
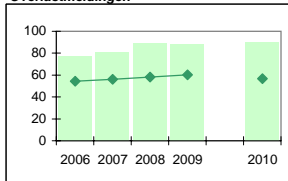
Diefstal zonder geweld



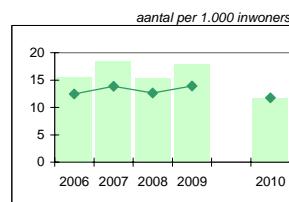
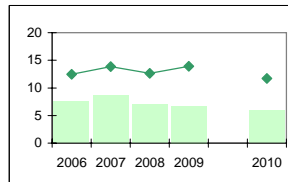
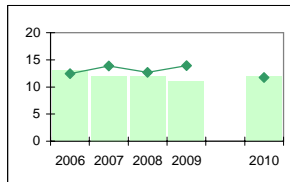
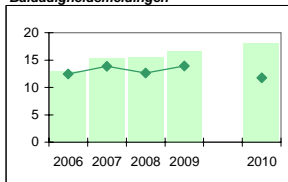
Vernieling



Overlastmeldingen



Baldadigheidsmeldingen



Bron voor bovenstaande grafieken: Genesys voor 2006 t/m 2009 en BHV voor 2010
 Aantal seksuele delicten is te gering om grafieken van te maken

2008	2009	2010
40,0	38,9	40,4
22,0	27,8	27,7
45,1	46,3	46,2
10,9	10,9	11,7

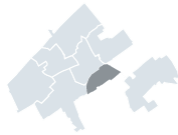
2008	2009	2010
38,9	36,8	37,2
28,2	28,3	19,7
40,9	39,2	45,0
6,4	8,4	7,1

2008	2009	2010
31,7	23,9	29,0
19,6	30,8	32,2
25,0	24,0	31,5
1,3	2,2	2,9

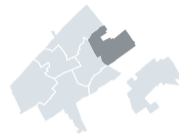
2008	2009	2010
27,1	31,8	32,5
35,2	24,8	26,3
24,4	29,2	25,5
1,5	3,1	2,7



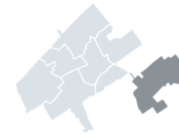
Centrum



Laak

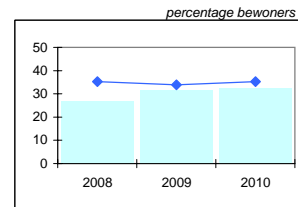
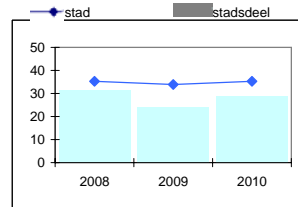
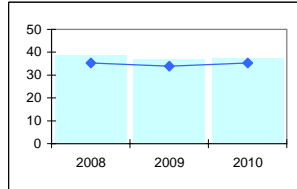
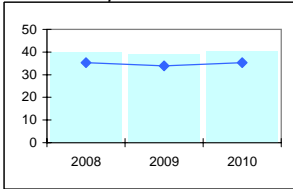


Haagse Hout

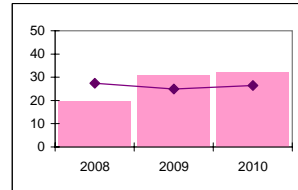
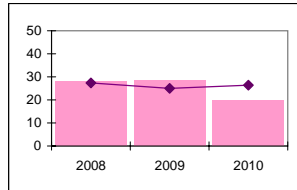
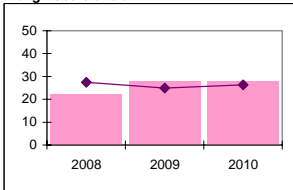


Leidschenveen -
Ypenburg

Slachtofferschap

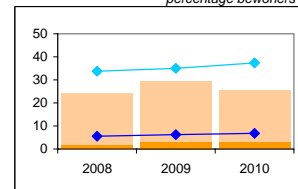
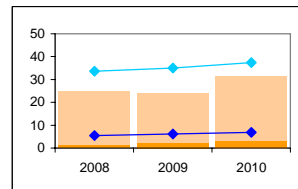
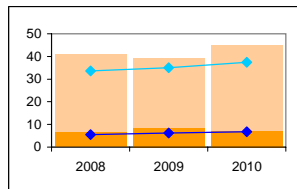
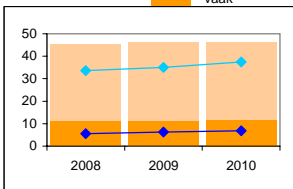


Aangiftebereidheid



Onveiligheidsgevoel

wel eens vaak



Bron voor de bovenstaande grafieken: Integrale Veiligheidsmonitor 2008, 2009 en 2010