

Key Real Estate Statistics in 2007

MIGRATION STATISTICS	# of Households	Average Income
Total Non-Migrants	207,512	\$57,500
Non-Movers	182,357	
Movers w/in County	25,155	
Total In-Migrants	20,595	\$41,200
From the Same State	9,263	\$37,200
From Other State	11,332	\$44,400
Total Out-Migrants	19,263	\$45,800
To the Same State	11,035	\$47,000
To Other State	8,228	\$44,000

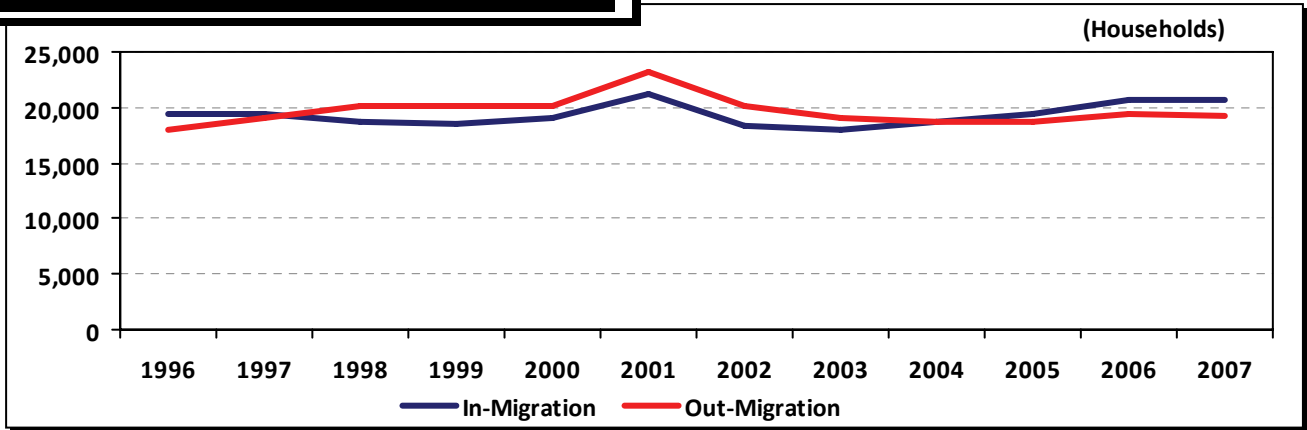
HOMEOWNERSHIP RATE				60%
Hispanic	31%	Black*	42%	
AIAN*	47%	NHPI*	NA	
Asian	61%	White	69%	

HOME SALES W/ MORTGAGES		12,663
Conventional Loans		11,188
FHA Guaranteed Loans		1,267
VA Guaranteed Loans		208
FHS/RHS Loans		NA
2nd Home Share		17 %

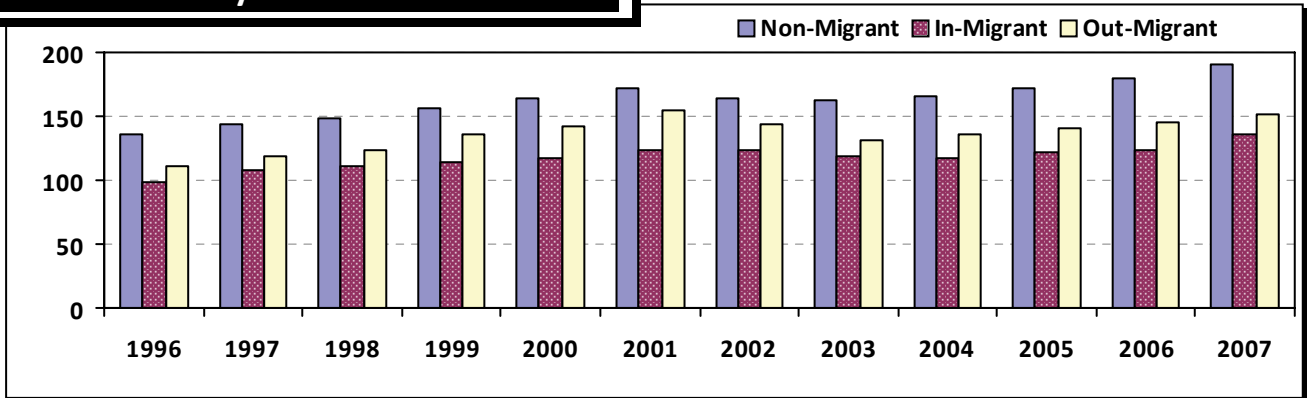
Source: Census Bureau 2007, IRS 2008, HMDA 2007, NAR 2008

* Black - Black or African American AIAN - American Indian and Alaska Native NHPI - Native Hawaiian and Other Pacific Islander

Historic Relocation Trend



Income Index by Relocation Status



** **Income Index** is measured by the relative level of median household income of a certain resident group compared to the national median income of non-movers in 2000. The income statistics used are those reported on annual tax filing to IRS.

NAR RELOCATION REPORT

Migration Counties In/Out of Davidson County, TN in 2007

Coming from			Going to							
State	County	# of Households	Income Index **	Distance ***	State	County	# of Households	Income Index	Distance	
1	TN	Rutherford County	1,712	61	36	TN	Rutherford County	2,726	74	36
2	TN	Williamson County	1,479	127	21	TN	Williamson County	1,774	158	21
3	TN	Sumner County	1,150	61	24	TN	Sumner County	1,480	83	24
4	TN	Wilson County	868	70	30	TN	Wilson County	1,329	109	30
5	TN	Shelby County	487	72	199	TN	Robertson County	534	79	25
6	CA	Los Angeles County	462	164	1,852	TN	Cheatham County	475	79	19
7	TN	Robertson County	423	63	25	TN	Shelby County	346	75	199
8	TN	Montgomery County	351	71	39	TN	Maury County	315	81	37
9	TN	Cheatham County	326	70	19	TN	Dickson County	230	80	29
10	TN	Knox County	324	66	167	TN	Montgomery County	230	54	39
11	TN	Hamilton County	223	62	118	TN	Knox County	215	79	167
12	IL	Cook County	217	92	378	IL	Cook County	185	88	378
13	TN	Maury County	210	90	37	GA	Fulton County	150	127	216
14	TN	Dickson County	182	62	29	TN	Hamilton County	143	71	118
15	TN	Madison County	163	53	127	TX	Harris County	140	76	665
16	GA	Fulton County	154	102	216	CA	Los Angeles County	137	80	1,852
17	AL	Jefferson County	127	95	173	GA	Dekalb County	121	77	214
18	TN	Putnam County	125	59	72	KY	Jefferson County	106	79	148
19	KY	Jefferson County	124	75	148	NY	New York County	103	115	783
20	GA	Dekalb County	121	106	214	AZ	Maricopa County	99	86	1,501
21	MI	Wayne County	117	68	456	GA	Cobb County	92	77	201
22	AL	Madison County	116	59	95	TX	Dallas County	87	88	633
23	KY	Warren County	108	67	61	NC	Mecklenburg County	85	113	352
24	FL	Broward County	106	77	774	WA	King County	83	57	2,046
25	AZ	Maricopa County	101	79	1,501	AL	Jefferson County	80	100	173
26	FL	Orange County	100	70	597	AL	Madison County	80	69	95
27	CA	Orange County	99	197	1,832	TN	Bedford County	80	58	49
28	TX	Harris County	96	103	665	TN	Hickman County	80	78	51
29	OH	Franklin County	94	64	335	TN	Marshall County	74	74	44
30	GA	Cobb County	91	89	201	NV	Clark County	69	102	1,643
31	NC	Mecklenburg County	89	154	352	KY	Warren County	66	73	61
32	FL	Hillsborough County	86	90	599	CA	San Diego County	65	62	1,809
33	CA	San Diego County	82	332	1,809	GA	Gwinnett County	65	85	219
34	TX	Dallas County	78	90	633	OH	Franklin County	62	51	335
35	FL	Pinellas County	75	113	589	TN	Putnam County	62	60	72
36	IN	Marion County	74	82	240	FL	Hillsborough County	60	101	599
37	KY	Fayette County	74	74	179	MN	Hennepin County	60	72	680
38	FL	Miami-Dade County	73	61	786	TN	Madison County	59	60	127
39	GA	Gwinnett County	71	87	219	FL	Duval County	58	83	486
40	MI	Oakland County	70	112	469	IN	Marion County	57	79	240
41	WI	Milwaukee County	64	67	455	FL	Miami-Dade County	56	87	786
42	OH	Hamilton County	63	75	231	TX	Travis County	56	116	765

** **Income Index** is measured by the relative level of median household income of a certain resident group compared to the national median income of non-movers in 2000. The income statistics used are those reported on annual tax filing to IRS.

*** **Distance** is calculated any two zip codes within the two counties and therefore may not necessarily match with the actual driving distance.

NAR RELOCATION REPORT

Coming from					Going to					
State	County	# of Households	Income ** Index	Distance ***	State	County	# of Households	Income Index	Distance	
43	NY	New York County	62	146	783	LA	Orleans Parish	54	51	453
44	TN	Bedford County	61	52	49	TN	Coffee County	54	57	61
45	FL	Palm Beach County	59	92	742	FL	Orange County	52	117	597
46	TX	Travis County	59	110	765	KY	Fayette County	49	73	179
47	NV	Clark County	58	87	1,643	FL	Broward County	48	86	774
48	TX	Tarrant County	57	89	664	FL	Pinellas County	46	112	589
49	OH	Cuyahoga County	56	80	452	TX	Tarrant County	46	86	664
50	TN	Hickman County	56	53	51	DC	District of Columbia	45	90	586
51	AR	Pulaski County	53	80	335	MO	St. Louis County	45	105	260
52	TN	Coffee County	53	59	61	VA	Fairfax County	41	95	574
53	NC	Wake County	52	98	475	MI	Wayne County	40	40	456
54	MO	St. Louis County	51	85	260	TX	Bexar County	40	82	833
55	VA	Fairfax County	49	116	574	CO	Denver County	38	128	1,069
56	MA	Middlesex County	48	88	965	FL	Palm Beach County	38	77	742
57	TN	Marshall County	48	45	44	TN	Humphreys County	37	168	62
58	IN	Vanderburgh County	47	60	127	NC	Wake County	36	80	475
59	WA	King County	47	85	2,046	NY	Kings County	35	73	782
60	OK	Oklahoma County	46	76	629	OH	Hamilton County	35	202	231
61	DC	District of Columbia	45	95	586	TX	Collin County	35	103	613
62	TX	Bexar County	45	81	833	NC	Durham County	34	85	458
63	CA	Riverside County	44	69	1,800	AR	Pulaski County	33	71	335
64	MD	Montgomery County	44	94	583	MA	Middlesex County	33	97	965
65	CA	San Bernardino County	42	76	1,794	OR	Multnomah County	33	72	2,048
66	LA	East Baton Rouge Parish	42	57	459	AL	Mobile County	32	80	366
67	MN	Hennepin County	41	84	680	LA	Jefferson Parish	32	56	455
68	TN	Bradley County	41	58	129	TN	Gibson County	32	44	129
69	FL	Duval County	40	57	486	TN	Cumberland County	30	59	106
70	KY	Christian County	40	89	61	CA	San Francisco County	29	76	2,046
71	TN	Washington County	40	76	249	MD	Montgomery County	29	92	583
72	CO	Denver County	39	284	1,069	MI	Oakland County	29	91	469
73	VA	Arlington County	39	104	582	TN	Sullivan County	29	79	256
74	LA	Orleans Parish	38	97	453	MO	St. Louis City	28	103	254
75	MS	Hinds County	38	69	325	OH	Cuyahoga County	28	79	452
76	TN	Sullivan County	38	65	256	SC	Charleston County	28	62	462
77	NY	Kings County	37	64	782	TN	Warren County	28	53	66
78	OH	Montgomery County	37	64	289	KY	Christian County	27	52	61
79	TN	Blount County	36	83	160	TN	Lawrence County	27	57	69
80	FL	Seminole County	35	78	584	CA	Orange County	26	80	1,832
81	TN	Smith County	35	43	45	MS	Harrison County	26	44	403
82	NY	Suffolk County	34	67	857	MO	Jackson County	26	97	487
83	TN	Carroll County	34	50	97	NC	Buncombe County	26	149	249
84	AL	Shelby County	33	73	156	PA	Philadelphia County	26	150	715
85	PA	Allegheny County	33	77	477	TN	Dekalb County	26	58	59
86	TN	Lawrence County	33	48	69	TN	Macon County	26	50	51

**** Income Index** is measured by the relative level of median household income of a certain resident group compared to the national median income of non-movers in 2000. The income statistics used are those reported on annual tax filing to IRS.

***** Distance** is calculated any two zip codes within the two counties and therefore may not necessarily match with the actual driving distance.

NAR RELOCATION REPORT

Coming from			Going to							
State	County	# of Households	Income Index	** Distance***	State	County	# of Households	Income Index	Distance	
87	TN	Macon County	33	57	51	TN	Trousdale County	26	260	40
88	IL	Dupage County	32	126	380	WI	Milwaukee County	26	56	455
89	IL	Lake County	32	112	411	PA	Allegheny County	25	120	477
90	KY	Mccracken County	32	53	125	FL	Escambia County	24	63	378
91	LA	Jefferson Parish	32	60	455	FL	Pasco County	24	86	577
92	NY	Queens County	32	79	792	IN	Vanderburgh County	24	81	127
93	SC	Greenville County	32	78	270	MA	Suffolk County	24	62	968
94	TN	Franklin County	32	79	74	NC	Forsyth County	24	97	382
95	TN	Henry County	32	53	91	SC	Greenville County	24	109	270
96	AL	Montgomery County	31	72	250	TN	Franklin County	24	90	74
97	FL	Escambia County	31	64	378	VA	Arlington County	24	121	582
98	TN	Gibson County	31	50	129	IL	Dupage County	23	192	380
99	TN	Giles County	31	50	63	OK	Oklahoma County	23	66	629
100	CA	Alameda County	30	156	2,034	TN	Giles County	23	51	63
101	MS	Desoto County	30	81	209	AL	Shelby County	22	113	156
102	AL	Mobile County	29	103	366	FL	Volusia County	22	101	573
103	AL	Tuscaloosa County	29	79	202	GA	Clayton County	22	46	226
104	CA	Santa Clara County	29	173	2,019	TN	Blount County	22	77	160
105	CT	Fairfield County	29	119	834	TX	Williamson County	22	97	742
106	FL	Lee County	29	63	694	AZ	Pima County	21	61	1,458
107	MI	Macomb County	29	75	475	CA	Santa Clara County	21	133	2,019
108	AL	Lauderdale County	28	54	102	MD	Prince George's County	21	56	598
109	CA	San Francisco County	28	193	2,046	OK	Tulsa County	21	63	536
110	CO	El Paso County	28	60	1,047	SC	Richland County	21	79	367
111	NJ	Hudson County	28	82	779	TN	Henry County	21	79	91
112	OK	Tulsa County	28	61	536	TN	Sevier County	21	52	186
113	TN	Weakley County	28	58	111	UT	Salt Lake County	21	117	1,449
114	FL	Leon County	27	61	405	CA	Alameda County	20	74	2,034
115	MI	Genesee County	27	40	481	CA	Sacramento County	20	115	1,987
116	TN	Cumberland County	27	50	106	FL	Brevard County	20	92	616
117	CO	Arapahoe County	26	164	1,062	FL	Polk County	20	235	622
118	FL	Brevard County	26	101	616	KS	Johnson County	20	71	493
119	KY	Calloway County	26	99	92	MI	Kent County	20	65	450
120	MA	Suffolk County	26	130	968	NY	Queens County	20	50	792
121	MI	Kent County	26	88	450	SC	Horry County	20	73	483
122	MS	Lafayette County	26	48	196	TN	Henderson County	20	72	100
123	NC	Guilford County	26	65	1,857	TX	Denton County	20	111	642
124	SC	Charleston County	26	75	462	CA	Riverside County	19	93	1,800
125	TN	Humphreys County	26	56	62	CA	San Bernardino County	19	54	1,794
126	TN	Obion County	26	61	137	TN	Smith County	19	90	45
127	VA	Henrico County	26	133	546	AL	Baldwin County	18	110	352
128	FL	Volusia County	25	76	573	AL	Tuscaloosa County	18	50	202
129	IN	Lake County	25	52	345	GA	Chatham County	18	126	423
130	MI	Ingham County	25	56	440	MD	Baltimore County	18	83	616

** **Income Index** is measured by the relative level of median household income of a certain resident group compared to the national median income of non-movers in 2000. The income statistics used are those reported on annual tax filing to IRS.

*** **Distance** is calculated any two zip codes within the two counties and therefore may not necessarily match with the actual driving distance.

NAR RELOCATION REPORT

	Coming from			Going to						
	State	County	# of Households	Income Index	Distance**	State	County	# of Households	Income Index	Distance
131	MI	Washtenaw County	25	138	432	OH	Montgomery County	18	82	289
132	VA	Virginia Beach City	25	69	622	TN	Carroll County	18	40	97
133	AL	Lee County	24	57	242	TN	Washington County	18	89	249
134	MO	St. Louis City	24	87	254	VA	Alexandria City	18	114	583
135	OH	Summit County	24	53	436	WI	Dane County	18	95	481
136	PA	Philadelphia County	24	103	715	AL	Lauderdale County	17	58	102
137	TX	Denton County	24	120	642	CO	Arapahoe County	17	114	1,062
138	CA	Sacramento County	23	49	1,987	FL	Leon County	17	70	405
139	FL	Bay County	23	52	399	GA	Richmond County	17	63	336
140	FL	Okaloosa County	23	49	346	KY	Hardin County	17	81	114
141	MD	Baltimore City	23	104	615	MS	Desoto County	17	92	209
142	NC	Forsyth County	23	131	382	NM	Bernalillo County	17	59	1,163
143	TN	Dyer County	23	47	154	NC	Cumberland County	17	69	476
144	KY	Daviess County	22	67	106	TN	Bradley County	17	68	129
145	NC	Durham County	22	251	458	CO	El Paso County	16	71	1,047
146	OH	Clermont County	22	62	244	HI	Honolulu County	16	114	4,468
147	TN	Dekalb County	22	75	59	KY	Daviess County	16	54	106
148	TN	Lauderdale County	22	47	166	LA	East Baton Rouge Parish	16	94	459
149	TN	White County	22	62	79	MD	Anne Arundel County	16	85	613
150	IL	Mclean County	21	67	309	NY	Nassau County	16	122	801
151	NC	Buncombe County	21	50	249	TX	Montgomery County	16	136	646
152	NC	Cumberland County	21	53	476	AL	Montgomery County	15	90	250
153	SC	Richland County	21	83	367	CO	Adams County	15	92	1,051
154	TN	Warren County	21	40	66	FL	Marion County	15	118	538
155	AL	Baldwin County	20	64	352	FL	Sarasota County	15	67	634
156	AZ	Pima County	20	74	1,458	GA	Douglas County	15	97	198
157	CA	Contra Costa County	20	120	2,030	IL	Will County	15	3	360
158	GA	Bibb County	20	93	287	IN	Lake County	15	66	345
159	IN	Monroe County	20	62	192	KY	Logan County	15	64	46
160	LA	St. Tammany Parish	20	157	425	KY	Mccracken County	15	101	125
161	MO	Jackson County	20	45	487	NJ	Hudson County	15	97	779
162	OH	Butler County	20	82	250	PA	Montgomery County	15	123	700
163	OR	Multnomah County	20	61	2,048	TN	Cannon County	15	47	48
164	HI	Honolulu County	19	84	4,468	TN	Lewis County	15	31	61
165	IN	Allen County	19	49	335	TN	White County	15	102	79
166	IN	Hamilton County	19	118	259	VA	Henrico County	15	127	546
167	KY	Simpson County	19	54	38	CT	New Haven County	14	74	850
168	NJ	Bergen County	19	73	783	DE	New Castle County	14	77	681
169	FL	Manatee County	18	109	632	FL	Alachua County	14	49	504
170	FL	Pasco County	18	56	577	FL	Lee County	14	173	694
171	FL	Polk County	18	39	622	FL	Seminole County	14	55	584
172	FL	Sarasota County	18	100	634	IN	Allen County	14	52	335
173	GA	Clarke County	18	70	247	KY	Calloway County	14	31	92
174	MA	Norfolk County	18	188	960	NC	New Hanover County	14	79	532

** **Income Index** is measured by the relative level of median household income of a certain resident group compared to the national median income of non-movers in 2000. The income statistics used are those reported on annual tax filing to IRS.

*** **Distance** is calculated any two zip codes within the two counties and therefore may not necessarily match with the actual driving distance.

NAR RELOCATION REPORT

Coming from				Going to						
State	County	# of Households	Income ** Index	Distance ***	State	County	# of Households	Income Index	Distance	
175	MS	Oktibbeha County	18	65	216	NC	Onslow County	14	53	552
176	RI	Providence County	18	69	939	TN	Benton County	14	84	78
177	TN	Henderson County	18	42	100	TN	Weakley County	14	69	111
178	VA	Prince William County	18	108	568	VA	Richmond City	14	437	540
179	AL	Morgan County	17	47	103	AL	Limestone County	13	68	93
180	FL	Alachua County	17	42	504	FL	Bay County	13	38	399
181	GA	Chatham County	17	55	423	FL	Okaloosa County	13	86	346
182	IL	Winnebago County	17	69	426	IA	Polk County	13	94	527
183	MD	Prince George's County	17	68	598	MI	Washtenaw County	13	50	432
184	MN	Dakota County	17	90	652	MN	Ramsey County	13	58	673
185	MS	Lee County	17	77	173	MO	St. Charles County	13	116	275
186	MS	Madison County	17	87	300	NE	Douglas County	13	76	616
187	NM	Bernalillo County	17	100	1,163	TN	Lincoln County	13	59	67
188	NY	Nassau County	17	96	801	TN	Perry County	13	61	73
189	TN	Mcminn County	17	36	133	FL	Clay County	12	59	508
190	TN	Sevier County	17	55	186	GA	Clarke County	12	51	247
191	TN	Tipton County	17	45	171	GA	Houston County	12	53	303
192	UT	Salt Lake County	17	90	1,449	LA	St. Tammany Parish	12	68	425
193	AL	Limestone County	16	98	93	MS	Hinds County	12	55	325
194	AR	Washington County	16	45	425	RI	Providence County	12	115	939
195	FL	Clay County	16	67	508	TN	Obion County	12	53	137
196	IL	Kane County	16	82	385	TN	Roane County	12	65	137
197	MD	Baltimore County	16	127	616	VA	Virginia Beach City	12	77	622
198	MA	Worcester County	16	73	928	AK	Anchorage Borough	11	58	3,325
199	MI	Berrien County	16	35	386	FL	Manatee County	11	98	632
200	MO	Boone County	16	52	360	FL	St. Johns County	11	128	531
201	NE	Douglas County	16	104	616	GA	Forsyth County	11	85	201
202	NY	Erie County	16	58	623	GA	Henry County	11	82	238
203	NY	Monroe County	16	56	684	ID	Ada County	11	202	1,699
204	NY	Westchester County	16	93	801	IN	Hamilton County	11	114	259
205	SC	Lexington County	16	91	355	IN	Monroe County	11	45	192
206	TN	Anderson County	16	68	151	MA	Norfolk County	11	56	960
207	WA	Pierce County	16	82	2,048	MS	Madison County	11	103	300
208	WI	Dane County	16	132	481	NV	Washoe County	11	113	1,888
209	CT	New Haven County	15	54	850	NY	Bronx County	11	28	788
210	FL	Osceola County	15	50	609	TN	Anderson County	11	64	151
211	GA	Richmond County	15	53	336	TN	Greene County	11	149	228
212	IN	Madison County	15	42	266	TN	Hardeman County	11	39	144
213	KS	Johnson County	15	84	493	TN	Lauderdale County	11	56	166
214	NJ	Middlesex County	15	66	754	TN	Stewart County	11	87	70
215	NY	Bronx County	15	49	788	TX	Fort Bend County	11	85	692
216	OH	Lucas County	15	47	402	AL	Houston County	10	62	339
217	TN	Hardin County	15	50	103	AL	Lee County	10	90	242
218	FL	Monroe County	14	80	822	AL	Morgan County	10	59	103

**** Income Index** is measured by the relative level of median household income of a certain resident group compared to the national median income of non-movers in 2000. The income statistics used are those reported on annual tax filing to IRS.

***** Distance** is calculated any two zip codes within the two counties and therefore may not necessarily match with the actual driving distance.

NAR RELOCATION REPORT

	Coming from			Going to						
	State	County	# of Households	Income Index	Distance**	State	County	# of Households	Income Index	Distance
219	IL	Peoria County	14	153	336	CA	Fresno County	10	72	1,906
220	KY	Hopkins County	14	41	86	CA	Kern County	10	62	1,892
221	MO	Greene County	14	57	383	FL	Collier County	10	1,633	723
222	NE	Lancaster County	14	77	639	FL	Lake County	10	48	572
223	NH	Rockingham County	14	102	986	GA	Cherokee County	10	151	182
224	TN	Carter County	14	77	269	GA	Muscogee County	10	66	265
225	TN	Hardeman County	14	66	144	GA	Newton County	10	89	243
226	TN	Lincoln County	14	52	67	IL	Champaign County	10	77	271
227	TX	Collin County	14	126	613	IL	Lake County	10	120	411
228	TX	Fort Bend County	14	61	692	IN	Clark County	10	54	152
229	TX	Montgomery County	14	60	646	IA	Johnson County	10	112	447
230	TX	Williamson County	14	118	742	KS	Sedgwick County	10	78	617
231	VA	Alexandria City	14	239	583	ME	Cumberland County	10	50	1,039
232	CA	Ventura County	13	69	1,908	NJ	Bergen County	10	137	783
233	FL	Lake County	13	76	572	NY	Onondaga County	10	49	744
234	GA	Douglas County	13	60	198	NC	Guilford County	10	96	1,857
235	IL	Jackson County	13	45	182	NC	Orange County	10	88	447
236	IN	Tippecanoe County	13	60	279	OH	Butler County	10	121	250
237	KY	Hardin County	13	43	114	OH	Lucas County	10	73	402
238	MN	Ramsey County	13	71	673	PA	Bucks County	10	113	715
239	MS	Harrison County	13	67	403	SC	Lexington County	10	109	355
240	MS	Rankin County	13	55	318	TN	Decatur County	10	66	87
241	SC	Beaufort County	13	68	437	TN	Hamblen County	10	98	204
242	TN	Chester County	13	50	120	VA	Chesterfield County	10	136	536
243	TX	Bell County	13	58	723	VA	Prince William County	10	65	568
244	UT	Utah County	13	41	1,436	WV	Kanawha County	10	89	328
245	WI	Waukesha County	13	83	453	WI	Racine County	10	53	434
246	CO	Jefferson County	12	71	1,075					
247	CT	Hartford County	12	73	874					
248	DE	New Castle County	12	78	681					
249	FL	St. Johns County	12	81	531					
250	GA	Clayton County	12	50	226					
251	GA	Hall County	12	94	212					
252	GA	Muscogee County	12	50	265					
253	IL	Champaign County	12	80	271					
254	IL	Tazewell County	12	164	329					
255	KS	Sedgwick County	12	50	617					
256	KY	Madison County	12	45	177					
257	KY	Marshall County	12	179	102					
258	LA	Ouachita Parish	12	79	396					
259	ME	Cumberland County	12	29	1,039					
260	MD	Anne Arundel County	12	208	613					
261	MA	Essex County	12	165	989					
262	MS	Lauderdale County	12	43	276					

** **Income Index** is measured by the relative level of median household income of a certain resident group compared to the national median income of non-movers in 2000. The income statistics used are those reported on annual tax filing to IRS.

*** **Distance** is calculated any two zip codes within the two counties and therefore may not necessarily match with the actual driving distance.

NAR RELOCATION REPORT

Coming from			Going to						
State	County	# of Households	Income Index	Distance**	State	County	# of Households	Income Index	Distance
263	MO	St. Charles County	12	77	275				
264	NY	Onondaga County	12	68	744				
265	NC	Craven County	12	61	577				
266	NC	Onslow County	12	37	552				
267	OK	Cleveland County	12	83	626				
268	OK	Comanche County	12	98	683				
269	TN	Haywood County	12	42	149				
270	TN	Rhea County	12	65	110				
271	AR	Benton County	11	97	434				
272	AR	Craighead County	11	60	226				
273	CA	San Mateo County	11	40	2,037				
274	FL	Martin County	11	66	711				
275	GA	Cherokee County	11	83	182				
276	GA	Houston County	11	145	303				
277	IL	St. Clair County	11	64	238				
278	IL	Sangamon County	11	41	289				
279	IL	Will County	11	59	360				
280	IN	St. Joseph County	11	37	362				
281	MI	Kalamazoo County	11	53	406				
282	MS	Forrest County	11	48	358				
283	NC	Cabarrus County	11	49	369				
284	NC	New Hanover County	11	44	532				
285	OH	Stark County	11	42	432				
286	OH	Warren County	11	122	260				
287	PA	Chester County	11	86	683				
288	PA	Lancaster County	11	52	647				
289	PA	York County	11	43	616				
290	SC	Horry County	11	67	483				
291	SC	York County	11	35	334				
292	TN	Jefferson County	11	51	197				
293	TN	Wayne County	11	52	77				
294	TX	El Paso County	11	68	1,207				
295	TX	Hidalgo County	11	70	947				
296	VA	Loudoun County	11	80	558				
297	VA	Newport News City	11	73	599				
298	VA	Roanoke City	11	66	401				
299	WV	Kanawha County	11	70	328				
300	AL	Colbert County	10	57	113				
301	AL	Etowah County	10	55	147				
302	AL	Jackson County	10	75	99				
303	AL	St. Clair County	10	93	194				
304	AR	Crittenden County	10	47	208				
305	CA	Solano County	10	67	2,020				
306	FL	Collier County	10	48	723				

** **Income Index** is measured by the relative level of median household income of a certain resident group compared to the national median income of non-movers in 2000. The income statistics used are those reported on annual tax filing to IRS.

*** **Distance** is calculated any two zip codes within the two counties and therefore may not necessarily match with the actual driving distance.

NAR RELOCATION REPORT

	Coming from			Going to						
	State	County	# of Households	Income Index **	Distance ***	State	County	# of Households	Income Index	Distance
307	FL	St. Lucie County	10	42	685					
308	GA	Henry County	10	64	238					
309	GA	Whitfield County	10	65	140					
310	ID	Ada County	10	105	1,699					
311	IL	Madison County	10	70	251					
312	IN	Delaware County	10	63	272					
313	IN	Warrick County	10	54	127					
314	IA	Polk County	10	607	527					
315	KY	Boone County	10	84	220					
316	KY	Kenton County	10	57	221					
317	KY	Logan County	10	107	46					
318	KY	Trigg County	10	60	73					
319	MS	Jackson County	10	64	383					
320	NJ	Essex County	10	117	773					
321	NJ	Ocean County	10	65	759					
322	NJ	Somerset County	10	58	742					
323	OH	Mahoning County	10	54	474					
324	OH	Trumbull County	10	66	468					
325	SC	Aiken County	10	81	344					
326	SC	Florence County	10	47	428					
327	SC	Pickens County	10	49	251					
328	TN	Campbell County	10	42	153					
329	TN	Cannon County	10	32	48					
330	TN	Loudon County	10	82	144					
331	TN	Mcnaury County	10	32	125					
332	TN	Roane County	10	73	137					
333	TX	Mclennan County	10	51	688					
334	VA	Hampton City	10	63	601					
335	WV	Cabell County	10	66	289					

** **Income Index** is measured by the relative level of median household income of a certain resident group compared to the national median income of non-movers in 2000. The income statistics used are those reported on annual tax filing to IRS.

*** **Distance** is calculated any two zip codes within the two counties and therefore may not necessarily match with the actual driving distance.

NAR *RELOCATION* REPORT

The NATIONAL ASSOCIATION OF REALTORS®, “The Voice for Real Estate,” is the nation’s largest professional association, representing more than 1.9 million members involved in all aspects of the real estate industry.

REALTOR®, REALTORS®, and REALTOR-ASSOCIATE® are registered collective membership marks that identify, and may be used only by, real estate professionals who are members of the NATIONAL ASSOCIATION OF REALTORS® and subscribe to its strict Code of Ethics.

For more information about the NATIONAL ASSOCIATION OF REALTORS® and its network of strategic partners, visit <http://realtors.org>.

About NAR’s Research Group

The Research Group of the NATIONAL ASSOCIATION OF REALTORS® produces the premiere measurement of residential real estate activity – the existing home sales series – and analyzes how changes in the economy can impact the real estate business. It examines trends in real estate practices, and how NAR members are adapting technology in their business operations. NAR Research also looks at recent regulatory and legislative policy proposals and how those policies could affect REALTORS® and their clients, America’s property owners. You can reach NAR Research via email at eresearch@realtors.org, or call us at 202-383-7518.

For more information on the NAR Relocation Report and other research products, visit <http://realtor.org/research.nsf/pages/ResearchProducts?OpenDocument>, or call NAR’s Information Central at 1-800-874-6500.

THE NATIONAL ASSOCIATION OF REALTORS®
430 North Michigan Avenue
Chicago, IL 60611-4087

**Win More Clients and Gain More Referrals
with *RELOCATION* REPORTS!**

**** Income Index** is measured by the relative level of median household income of a certain resident group compared to the national median income of non-movers in 2000. The income statistics used are those reported on annual tax filing to IRS.



The Voice For Real Estate®