

Davidson County, TN

RELOCATION REPORT

Key Real Estate Statistics in 2007

MIGRATION STATISTICS	# of Households	Average Income
Total Non-Migrants	217,550	\$57,700
Non-Movers	191,968	
Movers w/in County	25,582	
Total In-Migrants	21,338	\$40,700
From the Same State	9,710	\$39,100
From Other State	11,628	\$42,100
Total Out-Migrants	20,267	\$44,600
To the Same State	11,404	\$45,800
To Other State	8,863	\$43,100

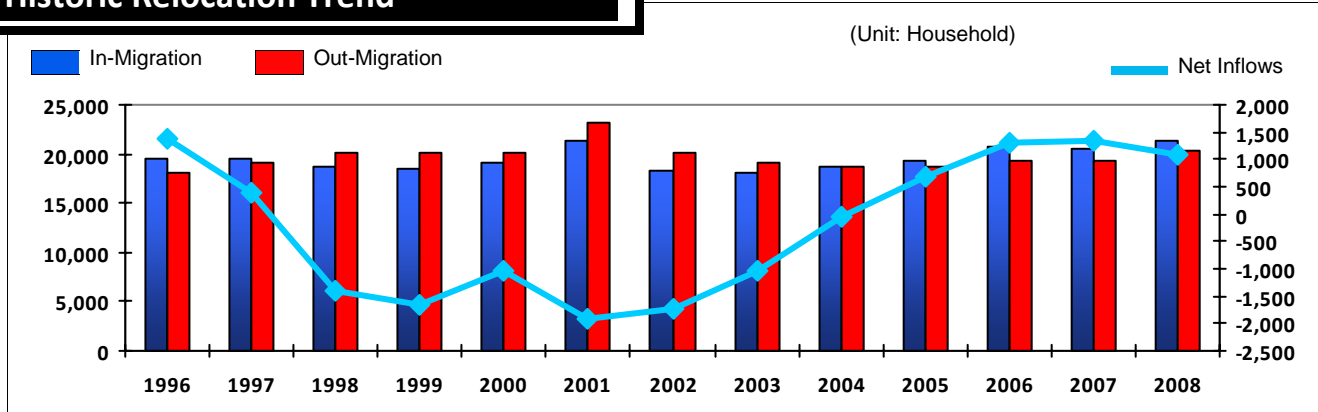
HOMEOWNERSHIP RATE		62%	
Hispanic	32%	Black*	48%
AIAN*	80%	NHPI*	NA
Asian	64%	White	67%

HOME SALES W/ MORTGAGES	8,724
Conventional Loans	5,826
FHA Guaranteed Loans	2,664
VA Guaranteed Loans	229
FHS/RHS Loans Loans	5
2nd Home Share	16 %
FHS/RHS Loans Loans	2 %

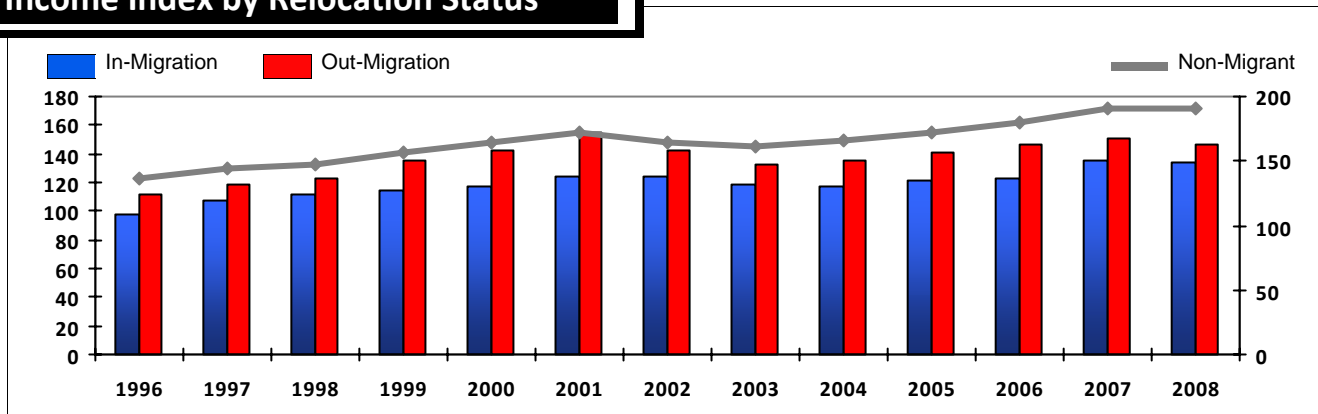
Source: Census Bureau 2009, IRS 2009, HMDA 2008, NAR 2009

* Black - Black or African American AIAN - American Indian and Alaska Native NHPI - Native Hawaiian and Other Pacific Islander

Historic Relocation Trend



Income Index by Relocation Status



** **Income Index** is measured by the relative level of median household income of a certain resident group compared to the national median income of non-movers in 2000. The income statistics used are those reported on annual tax filing to IRS.

Davidson County, TN

RELOCATION REPORT

Migration Counties In/Out of Davidson County, TN in 2008

	Coming from			Going to						
	State	County	# of Households	Income Index	Distance	**		State	County	# of Households
1	TN	Rutherford County	1,908	106	31	TN	Rutherford County	2,750	124	31
2	TN	Williamson County	1,542	214	20	TN	Williamson County	1,863	234	20
3	TN	Sumner County	1,193	110	28	TN	Wilson County	1,447	181	27
4	TN	Wilson County	812	129	27	TN	Sumner County	1,440	146	28
5	TN	Shelby County	545	135	188	TN	Robertson County	616	127	25
6	TN	Robertson County	430	107	25	TN	Cheatham County	480	126	18
7	TN	Cheatham County	401	131	18	TN	Shelby County	348	123	188
8	TN	Montgomery County	371	106	40	TN	Maury County	282	128	42
9	TN	Knox County	314	124	160	TN	Montgomery County	265	97	40
10	CA	Los Angeles County	237	157	1,801	TN	Dickson County	260	113	26
11	IL	Cook County	218	173	397	TN	Knox County	234	110	160
12	TN	Hamilton County	209	123	114	IL	Cook County	190	138	397
13	TN	Dickson County	208	116	26	TN	Hamilton County	156	126	114
14	TN	Maury County	208	102	42	GA	Fulton County	155	189	211
15	TN	Madison County	151	88	122	CA	Los Angeles County	154	156	1,801
16	AL	Jefferson County	137	142	181	TX	Harris County	137	133	666
17	TX	Harris County	137	141	666	KY	Jefferson County	125	119	153
18	KY	Jefferson County	133	135	153	GA	DeKalb County	123	114	221
19	GA	Fulton County	132	171	211	TX	Dallas County	115	142	619
20	KY	Warren County	130	107	61	AZ	Maricopa County	107	136	1,475
21	FL	Broward County	118	127	789	AL	Jefferson County	99	148	181
22	TN	Putnam County	117	118	72	NY	New York County	95	176	762
23	MI	Wayne County	116	105	464	AL	Madison County	94	134	98
24	GA	DeKalb County	113	171	221	CA	San Diego County	93	121	1,719
25	AL	Madison County	109	131	98	GA	Cobb County	92	113	199
26	AZ	Maricopa County	108	142	1,475	WA	King County	90	129	1,972
27	TX	Dallas County	103	194	619	TN	Putnam County	84	123	72
28	FL	Orange County	94	145	620	FL	Orange County	83	105	620
29	GA	Cobb County	90	129	199	TN	Madison County	80	105	122
30	NY	New York County	89	210	762	TN	Hickman County	77	110	46
31	MI	Oakland County	88	266	486	TX	Tarrant County	74	136	646
32	FL	Hillsborough County	87	149	629	KY	Warren County	70	84	61
33	MO	St. Louis County	86	172	264	NC	Mecklenburg County	70	158	341
34	OH	Franklin County	86	97	334	OH	Franklin County	69	208	334
35	NV	Clark County	83	134	1,574	IN	Marion County	68	110	253
36	CA	San Diego County	81	156	1,719	TN	Bedford County	68	186	49
37	IN	Marion County	78	137	253	FL	Hillsborough County	67	147	629
38	TX	Tarrant County	76	143	646	TX	Travis County	64	130	757
39	FL	Pinellas County	74	191	616	GA	Gwinnett County	62	111	219
40	GA	Gwinnett County	73	135	219	TN	Marshall County	61	108	49
41	FL	Miami-Dade County	72	94	831	NV	Clark County	59	87	1,574
42	FL	Palm Beach County	69	167	759	MO	St. Louis County	56	171	264
43	NC	Mecklenburg County	69	169	341	NY	Kings County	56	112	763

** **Income Index** is measured by the relative level of median household income of a certain resident group compared to the national median income of non-movers in 2000. The income statistics used are those reported on annual tax filing to IRS.

*** **Distance** is calculated any two zip codes within the two counties and therefore may not necessarily match with the actual driving distance.

Davidson County, TN

RELOCATION REPORT

Migration Counties In/Out of Davidson County, TN in 2008 (contined)

	Coming from			Going to						
	State	County	# of Households	Income Index	Distance**	State				
44	KY	Fayette County	68	136	183	FL	Miami-Dade County	53	249	831
45	OH	Hamilton County	67	141	243	CA	Orange County	52	180	1,763
46	TN	Bedford County	66	88	49	FL	Duval County	50	147	502
47	TX	Travis County	66	152	757	MN	Hennepin County	50	90	707
48	WI	Milwaukee County	65	123	479	TN	Coffee County	50	115	62
49	KY	Christian County	62	78	64	DC	District of Columbia	48	165	569
50	TN	Hickman County	62	98	46	CO	Denver County	47	174	1,019
51	TN	Coffee County	61	105	62	FL	Broward County	46	330	789
52	NY	Kings County	59	94	763	MI	Wayne County	46	108	464
53	OH	Cuyahoga County	57	186	458	OH	Hamilton County	46	165	243
54	DC	District of Columbia	54	196	569	OH	Cuyahoga County	45	148	458
55	FL	Lee County	53	120	715	FL	Pinellas County	44	166	616
56	TN	Marshall County	53	91	49	VA	Fairfax County	43	229	553
57	IN	Vanderburgh County	52	100	136	LA	Orleans Parish	41	101	461
58	TX	Bexar County	52	120	829	MA	Middlesex County	41	179	933
59	NC	Wake County	51	212	457	TN	DeKalb County	40	101	55
60	VA	Fairfax County	51	183	553	TN	Smith County	40	123	47
61	WA	King County	51	192	1,972	MD	Montgomery County	39	201	564
62	KY	McCracken County	50	106	124	FL	Palm Beach County	38	98	759
63	MN	Hennepin County	50	115	707	KY	Fayette County	38	118	183
64	AL	Shelby County	49	265	202	TX	Collin County	37	164	596
65	TN	Washington County	49	153	240	NY	Queens County	36	88	770
66	MA	Middlesex County	48	165	933	PA	Allegheny County	36	153	475
67	MS	Hinds County	47	128	343	MA	Suffolk County	34	155	944
68	OH	Montgomery County	47	95	284	TN	Macon County	34	79	50
69	FL	Duval County	46	143	502	WI	Milwaukee County	34	106	479
70	TN	Humphreys County	45	166	56	AL	Mobile County	33	97	400
71	AL	Mobile County	43	139	400	CA	Santa Clara County	33	205	1,930
72	CA	Orange County	43	165	1,763	NC	Wake County	33	163	457
73	MI	Genesee County	43	84	503	TN	Giles County	33	93	69
74	SC	Charleston County	43	176	454	TX	Bexar County	33	131	829
75	AR	Pulaski County	42	134	327	CA	San Francisco County	32	244	1,975
76	PA	Allegheny County	41	162	475	TN	Franklin County	32	155	80
77	CA	San Bernardino County	39	92	1,656	MO	St. Louis City	30	106	256
78	MI	Macomb County	39	107	497	AR	Pulaski County	29	137	327
79	IL	Dupage County	38	201	400	TN	Cumberland County	29	117	101
80	TN	Blount County	38	113	164	AL	Montgomery County	28	133	276
81	TN	Cumberland County	37	92	101	AZ	Pima County	28	155	1,461
82	SC	Richland County	36	260	366	MI	Oakland County	28	177	486
83	CA	San Francisco County	35	314	1,975	OK	Oklahoma County	28	123	599
84	NY	Queens County	35	105	770	KY	McCracken County	27	113	124
85	PA	Philadelphia County	35	242	688	CA	Alameda County	26	113	1,937
86	AL	Lauderdale County	34	107	101	LA	Jefferson Parish	26	133	499

** **Income Index** is measured by the relative level of median household income of a certain resident group compared to the national median income of non-movers in 2000. The income statistics used are those reported on annual tax filing to IRS.

*** **Distance** is calculated any two zip codes within the two counties and therefore may not necessarily match with the actual driving distance.

Davidson County, TN

RELOCATION REPORT

Migration Counties In/Out of Davidson County, TN in 2008 (contined)

	Coming from			Going to						
	State	County	# of Households	Income Index	Distance**	State				
87	FL	Okaloosa County	34	127	380	TN	Washington County	26	241	240
88	MO	St. Louis City	34	105	256	VA	Arlington County	26	396	564
89	NC	Guilford County	34	108	392	LA	East Baton Rouge Parish	25	138	464
90	TN	Sullivan County	34	122	251	MS	Desoto County	25	129	202
91	AL	Montgomery County	33	119	276	PA	Philadelphia County	25	160	688
92	TN	Franklin County	33	125	80	AL	Shelby County	24	233	202
93	TN	Gibson County	33	86	121	FL	Seminole County	24	126	611
94	TN	Warren County	33	73	66	KY	Christian County	24	131	64
95	TX	Collin County	33	439	596	MD	Prince George's County	24	114	576
96	MA	Suffolk County	32	156	944	NC	Buncombe County	24	179	242
97	MI	Kent County	32	84	481	SC	Horry County	24	108	469
98	TN	Henry County	32	71	86	TN	Lawrence County	24	90	74
99	FL	Sarasota County	31	167	676	TN	Weakley County	24	69	109
100	OK	Tulsa County	31	115	513	TX	Denton County	24	214	625
101	TX	Denton County	31	156	625	AL	Lauderdale County	23	118	101
102	FL	Leon County	30	146	422	CA	Riverside County	23	156	1,664
103	FL	Seminole County	30	108	611	IL	Dupage County	23	177	400
104	GA	Clarke County	30	84	248	MD	Baltimore City	23	137	598
105	VA	Virginia Beach City	30	131	600	NM	Bernalillo County	23	110	1,122
106	FL	Volusia County	29	107	592	FL	Escambia County	22	101	383
107	OK	Oklahoma County	29	155	599	FL	Polk County	22	340	644
108	TN	Lawrence County	29	112	74	OH	Montgomery County	22	112	284
109	TN	Smith County	29	132	47	OK	Tulsa County	22	153	513
110	MI	Ingham County	28	91	464	SC	Charleston County	22	264	454
111	NY	Erie County	28	149	628	TN	Blount County	22	109	164
112	NC	Durham County	28	182	443	AL	Baldwin County	21	122	381
113	AL	Tuscaloosa County	27	98	204	HI	Honolulu County	21	119	4,836
114	CA	Santa Clara County	27	247	1,930	KS	Johnson County	21	172	480
115	HI	Honolulu County	27	115	4,836	MS	Hinds County	21	116	343
116	IN	Allen County	27	154	354	SC	Greenville County	21	171	265
117	IN	Monroe County	27	81	208	TN	Anderson County	21	118	145
118	KY	Calloway County	27	66	89	TN	Cannon County	21	85	48
119	MD	Baltimore City	27	183	598	TN	Humphreys County	21	328	56
120	MS	Desoto County	27	140	202	TN	Trousdale County	21	127	38
121	OH	Lucas County	27	145	414	TN	Warren County	21	81	66
122	TN	Bradley County	27	296	129	IN	Hamilton County	20	168	274
123	TN	DeKalb County	27	89	55	MI	Kent County	20	128	481
124	CA	Alameda County	26	142	1,937	OR	Multnomah County	20	211	1,963
125	CO	El Paso County	26	146	991	TN	Gibson County	20	99	121
126	FL	Escambia County	26	83	383	UT	Salt Lake County	20	160	1,395
127	KS	Johnson County	26	220	480	CA	Sacramento County	19	136	1,900
128	MD	Montgomery County	26	172	564	CA	San Mateo County	19	171	1,963
129	MA	Norfolk County	26	247	942	CO	Arapahoe County	19	153	1,015

** **Income Index** is measured by the relative level of median household income of a certain resident group compared to the national median income of non-movers in 2000. The income statistics used are those reported on annual tax filing to IRS.

*** **Distance** is calculated any two zip codes within the two counties and therefore may not necessarily match with the actual driving distance.

Davidson County, TN

RELOCATION REPORT

Migration Counties In/Out of Davidson County, TN in 2008 (contined)

Coming from			Going to							
State	County	# of Households	Income ** Index	Distance ***	State	County	# of Households	Income Index	Distance	
130	MS	Lafayette County	26	107	198	IL	Will County	19	145	372
131	SC	Greenville County	26	256	265	MD	Baltimore County	19	142	600
132	TN	Giles County	26	79	69	TN	Carroll County	19	80	94
133	CA	Riverside County	25	95	1,664	TX	Williamson County	19	190	735
134	CO	Denver County	25	261	1,019	AL	Tuscaloosa County	18	133	204
135	FL	Bay County	25	75	415	CA	San Bernardino County	18	220	1,656
136	GA	Chatham County	25	178	435	GA	Chatham County	18	139	435
137	NJ	Hudson County	25	145	758	IN	Vanderburgh County	18	108	136
138	TN	Carroll County	25	64	94	KY	Logan County	18	80	48
139	WI	Dane County	25	156	499	LA	St. Tammany Parish	18	131	440
140	IL	Will County	24	161	372	MN	Ramsey County	18	112	698
141	LA	Jefferson Parish	24	133	499	SC	Richland County	18	134	366
142	MI	Washtenaw County	24	179	451	TN	Sevier County	18	111	185
143	NC	Forsyth County	24	198	366	TX	Bell County	18	93	714
144	TN	Dyer County	24	82	148	TX	Fort Bend County	18	196	698
145	VA	Arlington County	24	149	564	VA	Prince William County	18	142	542
146	AL	Limestone County	23	89	95	AL	Limestone County	17	95	95
147	FL	Polk County	23	92	644	FL	Brevard County	17	133	652
148	TN	Weakley County	23	76	109	GA	Clayton County	17	96	229
149	AL	Baldwin County	22	125	381	KY	Calloway County	17	84	89
150	LA	East Baton Rouge Parish	22	186	464	KY	Daviess County	17	158	110
151	MS	Rankin County	22	115	326	TN	Sullivan County	17	107	251
152	TN	Anderson County	22	109	145	VA	Virginia Beach City	17	85	600
153	TN	Obion County	22	119	133	FL	Lee County	16	122	715
154	TN	White County	22	93	83	FL	Leon County	16	128	422
155	AR	Craighead County	21	107	217	FL	Okaloosa County	16	230	380
156	MO	Jackson County	21	122	459	FL	Pasco County	16	89	603
157	OH	Stark County	21	82	436	FL	Volusia County	16	137	592
158	PA	Montgomery County	21	206	682	MD	Anne Arundel County	16	109	592
159	TX	Williamson County	21	179	735	NC	Guilford County	16	184	392
160	UT	Salt Lake County	21	180	1,395	NC	New Hanover County	16	190	522
161	VA	Henrico County	21	125	529	TN	Roane County	16	106	129
162	CA	Sacramento County	20	103	1,900	TX	Montgomery County	16	138	650
163	CO	Arapahoe County	20	67	1,015	VA	Henrico County	16	215	529
164	CT	Fairfield County	20	147	805	VA	Loudoun County	16	227	541
165	CT	Hartford County	20	132	851	WA	Pierce County	16	190	1,966
166	DE	New Castle County	20	344	656	WI	Dane County	16	254	499
167	FL	Manatee County	20	124	658	CO	El Paso County	15	97	991
168	FL	Pasco County	20	114	603	CO	Jefferson County	15	243	1,029
169	KY	Daviess County	20	245	110	FL	Alachua County	15	78	519
170	MD	Prince George's County	20	80	576	FL	Collier County	15	735	769
171	OH	Butler County	20	141	257	IL	Champaign County	15	174	286
172	WA	Pierce County	20	143	1,966	IN	St. Joseph County	15	153	379

** **Income Index** is measured by the relative level of median household income of a certain resident group compared to the national median income of non-movers in 2000. The income statistics used are those reported on annual tax filing to IRS.

*** **Distance** is calculated any two zip codes within the two counties and therefore may not necessarily match with the actual driving distance.

Davidson County, TN

RELOCATION REPORT

Migration Counties In/Out of Davidson County, TN in 2008 (contined)

	Coming from			Going to						
	State	County	# of Households	Income ** Index	Distance ***	State	County	# of Households	Income Index	Distance
173	AL	Morgan County	19	87	119	KY	Simpson County	15	74	41
174	CT	New Haven County	19	136	831	MI	Genesee County	15	56	503
175	FL	Alachua County	19	138	519	MO	Jackson County	15	149	459
176	FL	Brevard County	19	152	652	NC	Durham County	15	97	443
177	IL	Champaign County	19	132	286	NC	Forsyth County	15	162	366
178	IN	Lake County	19	94	365	NC	Onslow County	15	60	538
179	MS	Lee County	19	100	169	SC	Beaufort County	15	140	436
180	NY	Bronx County	19	96	774	VA	Alexandria City	15	207	564
181	OH	Summit County	19	96	446	AL	Morgan County	14	110	119
182	TN	Macon County	19	95	50	CT	New Haven County	14	224	831
183	TX	El Paso County	19	93	1,160	IL	Kane County	14	130	410
184	FL	Collier County	18	187	769	IL	Lake County	14	188	432
185	FL	Lake County	18	141	594	KS	Sedgwick County	14	180	601
186	FL	Marion County	18	120	556	MA	Norfolk County	14	197	942
187	GA	Cherokee County	18	187	187	MI	Ingham County	14	177	464
188	IN	St. Joseph County	18	105	379	MS	Lee County	14	116	169
189	KY	Hardin County	18	178	115	OH	Butler County	14	93	257
190	KY	Simpson County	18	83	41	OH	Summit County	14	113	446
191	NY	Suffolk County	18	202	853	PA	Lancaster County	14	99	634
192	NC	Orange County	18	143	429	TN	Bradley County	14	121	129
193	OR	Multnomah County	18	94	1,963	TN	Dyer County	14	104	148
194	TN	Lauderdale County	18	56	162	TN	Henry County	14	131	86
195	TN	Sevier County	18	83	185	TN	White County	14	129	83
196	AR	Washington County	17	129	417	TX	El Paso County	14	221	1,160
197	GA	Forsyth County	17	191	202	AL	Colbert County	13	67	117
198	IL	Sangamon County	17	104	294	AR	Benton County	13	283	418
199	KY	Graves County	17	97	111	CA	Contra Costa County	13	176	1,936
200	NE	Douglas County	17	106	618	CO	Boulder County	13	240	1,046
201	NJ	Morris County	17	364	738	FL	Walton County	13	139	385
202	NY	Monroe County	17	100	685	GA	Richmond County	13	75	332
203	WA	Snohomish County	17	159	1,975	IN	Lake County	13	79	365
204	AL	Lee County	16	126	261	ME	Cumberland County	13	148	1,023
205	AZ	Pima County	16	141	1,461	NJ	Hudson County	13	112	758
206	LA	Orleans Parish	16	122	461	NY	Suffolk County	13	108	853
207	ME	Cumberland County	16	95	1,023	TN	Hardeman County	13	65	141
208	MS	Madison County	16	65	308	TN	Lincoln County	13	130	72
209	NC	Buncombe County	16	109	242	AL	Lee County	12	159	261
210	NC	Cumberland County	16	93	456	AR	Washington County	12	181	417
211	TN	Lincoln County	16	70	72	CA	Ventura County	12	49	1,847
212	TN	Loudon County	16	132	137	FL	Manatee County	12	75	658
213	TX	Fort Bend County	16	138	698	FL	Santa Rosa County	12	120	379
214	GA	Clayton County	15	62	229	FL	Sarasota County	12	105	676
215	IL	Peoria County	15	342	359	GA	Cherokee County	12	152	187

** **Income Index** is measured by the relative level of median household income of a certain resident group compared to the national median income of non-movers in 2000. The income statistics used are those reported on annual tax filing to IRS.

*** **Distance** is calculated any two zip codes within the two counties and therefore may not necessarily match with the actual driving distance.

Davidson County, TN

RELOCATION REPORT

Migration Counties In/Out of Davidson County, TN in 2008 (contined)

	Coming from			Going to						
	State	County	# of Households	Income Index	Distance**	State				
216	MD	Anne Arundel County	15	138	592	GA	Forsyth County	12	438	202
217	NE	Lancaster County	15	124	625	GA	Hall County	12	144	212
218	NJ	Bergen County	15	220	764	GA	Henry County	12	99	241
219	NY	Nassau County	15	208	782	IL	Peoria County	12	277	359
220	TN	Henderson County	15	65	97	NE	Lancaster County	12	105	625
221	VA	Newport News City	15	79	575	NJ	Bergen County	12	111	764
222	AR	White County	14	108	287	NY	Erie County	12	114	628
223	CA	San Mateo County	14	134	1,963	OH	Lucas County	12	126	414
224	CO	Douglas County	14	179	1,016	SC	Lexington County	12	123	351
225	FL	Osceola County	14	101	653	TN	Henderson County	12	79	97
226	IL	Kane County	14	195	410	TN	Stewart County	12	57	63
227	IN	Tippecanoe County	14	137	293	TN	Tipton County	12	126	174
228	MD	Baltimore County	14	215	600	CT	Hartford County	11	175	851
229	MA	Essex County	14	129	958	IL	Winnebago County	11	94	446
230	MI	Kalamazoo County	14	86	427	IN	Allen County	11	130	354
231	MN	Dakota County	14	88	676	IA	Johnson County	11	107	461
232	MS	Oktibbeha County	14	76	225	KY	Hardin County	11	106	115
233	MS	Washington County	14	172	311	KY	Kenton County	11	151	228
234	NH	Hillsborough County	14	127	930	MI	Washtenaw County	11	264	451
235	NY	Onondaga County	14	95	737	MS	Harrison County	11	147	426
236	OH	Medina County	14	112	433	MS	Jackson County	11	110	418
237	SC	Beaufort County	14	304	436	NC	Cumberland County	11	87	456
238	SC	Spartanburg County	14	112	284	OK	Cleveland County	11	130	598
239	TN	Benton County	14	87	72	TN	Hardin County	11	37	104
240	TN	Lewis County	14	52	60	TN	Jackson County	11	115	64
241	TN	Overton County	14	81	85	FL	Marion County	10	93	556
242	CA	Fresno County	13	78	1,824	GA	Clarke County	10	124	248
243	IL	Lake County	13	125	432	GA	Muscogee County	10	151	276
244	IL	Winnebago County	13	91	446	LA	Caddo Parish	10	137	477
245	KY	Kenton County	13	219	228	ME	Androscoggin County	10	122	1,036
246	MI	Saginaw County	13	98	518	MD	Howard County	10	182	581
247	MN	Ramsey County	13	140	698	MA	Essex County	10	154	958
248	MO	Cape Girardeau County	13	95	182	MA	Hampden County	10	77	865
249	PA	Chester County	13	205	659	MS	Lowndes County	10	114	210
250	SC	Horry County	13	110	469	MS	Madison County	10	94	308
251	TN	Fayette County	13	97	163	MS	Rankin County	10	82	326
252	TN	Hardeman County	13	90	141	MO	St. Charles County	10	231	280
253	TN	Haywood County	13	67	146	NE	Douglas County	10	68	618
254	TN	McMinn County	13	75	132	NY	Albany County	10	176	817
255	TN	McNairy County	13	74	122	NY	Nassau County	10	186	782
256	TN	Roane County	13	84	129	NC	Cabarrus County	10	129	355
257	TN	Tipton County	13	67	174	NC	Orange County	10	132	429
258	TX	Hidalgo County	13	57	959	OR	Washington County	10	185	1,996

** **Income Index** is measured by the relative level of median household income of a certain resident group compared to the national median income of non-movers in 2000. The income statistics used are those reported on annual tax filing to IRS.

*** **Distance** is calculated any two zip codes within the two counties and therefore may not necessarily match with the actual driving distance.

Davidson County, TN

RELOCATION REPORT

Migration Counties In/Out of Davidson County, TN in 2008 (contined)

	Coming from			Going to						
	State	County	# of Households	Income Index	Distance**	State				
259	VA	Prince William County	13	158	542	PA	Montgomery County	10	616	682
260	AL	Calhoun County	12	111	175	TN	Decatur County	10	113	84
261	AR	Benton County	12	91	418	TN	Hamblen County	10	114	197
262	CO	Jefferson County	12	90	1,029	TN	McMinn County	10	94	132
263	FL	St. Johns County	12	253	535	TX	Hidalgo County	10	84	959
264	GA	Henry County	12	226	241					
265	GA	Muscogee County	12	104	276					
266	IL	Jackson County	12	128	182					
267	IL	McHenry County	12	128	436					
268	IL	Macon County	12	91	282					
269	IL	Madison County	12	102	252					
270	IN	Delaware County	12	83	291					
271	IN	Elkhart County	12	89	380					
272	IN	Warrick County	12	91	136					
273	KS	Sedgwick County	12	168	601					
274	KY	Barren County	12	146	73					
275	KY	Madison County	12	109	176					
276	LA	St. Tammany Parish	12	161	440					
277	MD	Howard County	12	159	581					
278	MA	Worcester County	12	124	905					
279	MS	Harrison County	12	90	426					
280	MS	Lauderdale County	12	133	282					
281	MO	Greene County	12	101	372					
282	MO	St. Charles County	12	119	280					
283	NJ	Passaic County	12	95	755					
284	NM	Bernalillo County	12	156	1,122					
285	NC	Onslow County	12	153	538					
286	NC	Pitt County	12	125	530					
287	OH	Clermont County	12	124	246					
288	SD	Minnehaha County	12	201	744					
289	TN	Hardin County	12	79	104					
290	TN	Marion County	12	174	97					
291	TN	Stewart County	12	227	63					
292	WV	Kanawha County	12	161	327					
293	AL	Etowah County	11	101	153					
294	AR	Crittenden County	11	130	210					
295	CA	San Joaquin County	11	87	1,901					
296	CT	New London County	11	128	873					
297	GA	Richmond County	11	125	332					
298	IL	Kankakee County	11	170	350					
299	IL	St. Clair County	11	116	236					
300	IN	Hamilton County	11	211	274					
301	IA	Polk County	11	85	529					

**** Income Index** is measured by the relative level of median household income of a certain resident group compared to the national median income of non-movers in 2000. The income statistics used are those reported on annual tax filing to IRS.

***** Distance** is calculated any two zip codes within the two counties and therefore may not necessarily match with the actual driving distance.

Davidson County, TN

RELOCATION REPORT

Migration Counties In/Out of Davidson County, TN in 2008 (contined)

	Coming from			Going to						
	State	County	# of Households	Income Index **	Distance ***	State	County	# of Households	Income Index	Distance
302	KS	Riley County	11	93	587					
303	KY	Logan County	11	102	48					
304	MI	Jackson County	11	118	440					
305	MS	Forrest County	11	117	374					
306	MO	Taney County	11	83	351					
307	NV	Washoe County	11	314	1,802					
308	NJ	Monmouth County	11	166	740					
309	OH	Warren County	11	179	268					
310	TX	Lubbock County	11	87	874					
311	AL	Houston County	10	138	358					
312	CA	Contra Costa County	10	185	1,936					
313	CO	Larimer County	10	94	1,059					
314	IN	Porter County	10	394	367					
315	MI	Livingston County	10	127	472					
316	MN	Anoka County	10	86	717					
317	MS	Alcorn County	10	66	135					
318	MO	Boone County	10	105	361					
319	NY	Dutchess County	10	113	802					
320	NC	Henderson County	10	162	249					
321	OR	Clackamas County	10	233	1,950					
322	PA	Centre County	10	138	587					
323	PA	Erie County	10	100	543					
324	PA	York County	10	92	607					
325	SC	Anderson County	10	76	261					
326	SC	Berkeley County	10	196	441					
327	TN	Decatur County	10	82	84					
328	TN	Greene County	10	259	221					
329	TN	Hawkins County	10	123	215					
330	VA	Loudoun County	10	228	541					

** **Income Index** is measured by the relative level of median household income of a certain resident group compared to the national median income of non-movers in 2000. The income statistics used are those reported on annual tax filing to IRS.

*** **Distance** is calculated any two zip codes within the two counties and therefore may not necessarily match with the actual driving distance.