

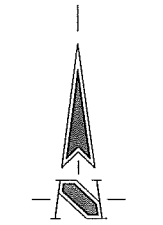
VERTICAL CONTROL INFORMATION

THE ELEVATIONS SHOWN HEREON ARE BASED UPON A POSITIONAL SOLUTION DERIVED FROM GLOBAL POSITIONING SYSTEM (GPS) OBSERVATIONS PROCESSED BY NATIONAL GEODETIC SURVEY (NGS) UTILIZING THEIR ONLINE POSITIONING USER SERVICE (OPUS) SOFTWARE IN INDIANA STATE PLANE COORDINATE SYSTEM (WEST ZONE) REFERENCE TO THE 1983 NORTH AMERICAN DATUM UTILIZING THE CONTINUOUSLY OPERATING REFERENCE STATIONS (CORS) ADJUSTMENT AS DETERMINED BY NGS (NAD 83(2011)EPOCH 2010.000) WITH A REPORTED OVERALL ROOT MEAN SQUARE (RMS) OF 0.012 METERS. ELEVATIONS SHOWN HEREON ARE BASED UPON SAID OPUS SOLUTION AND ARE ON THE 1988 NORTH AMERICAN VERTICAL DATUM (NAVD88) IN US SURVEY FEET. THIS ORTHOMETRIC ELEVATION WAS DERIVED UTILIZING THE MOST RECENT GEODAL MODEL (GEOID12A). IT IS MY OPINION THAT THE UNCERTAINTY IN THE ELEVATION OF THE PROJECT BENCHMARK DOES NOT EXCEED 0.10 FOOT.

CONTROL POINT	NORTHING	EASTING	ELEVATION OBSERVED	DESCRIPTION
TBM 1			656.89	MOST NORTHERLY CORNER OF CONCRETE STOOP AT NW COR OF RECREATION BUILDING
CP100	1883779.282	3032931.895	655.12	REBAR WITH "RANDOM CAP" 16.8' NORTH OF BACK WALK AT END PARKING LOT, IN LINE WITH EDGE PAVT.
CP101	1883636.970	3033070.063	655.34	REBAR WITH "RANDOM CAP" 21' SELY OF EDGE CROSS WALK & 10.8' E. OF FACE CURB AT INLET
CP102	1883601.830	3033365.171	654.13	REBAR WITH "RANDOM CAP" 37' HELY OF BEEHIVE INLET & 9.7' SELY FROM S. EDGE CONIC WALK

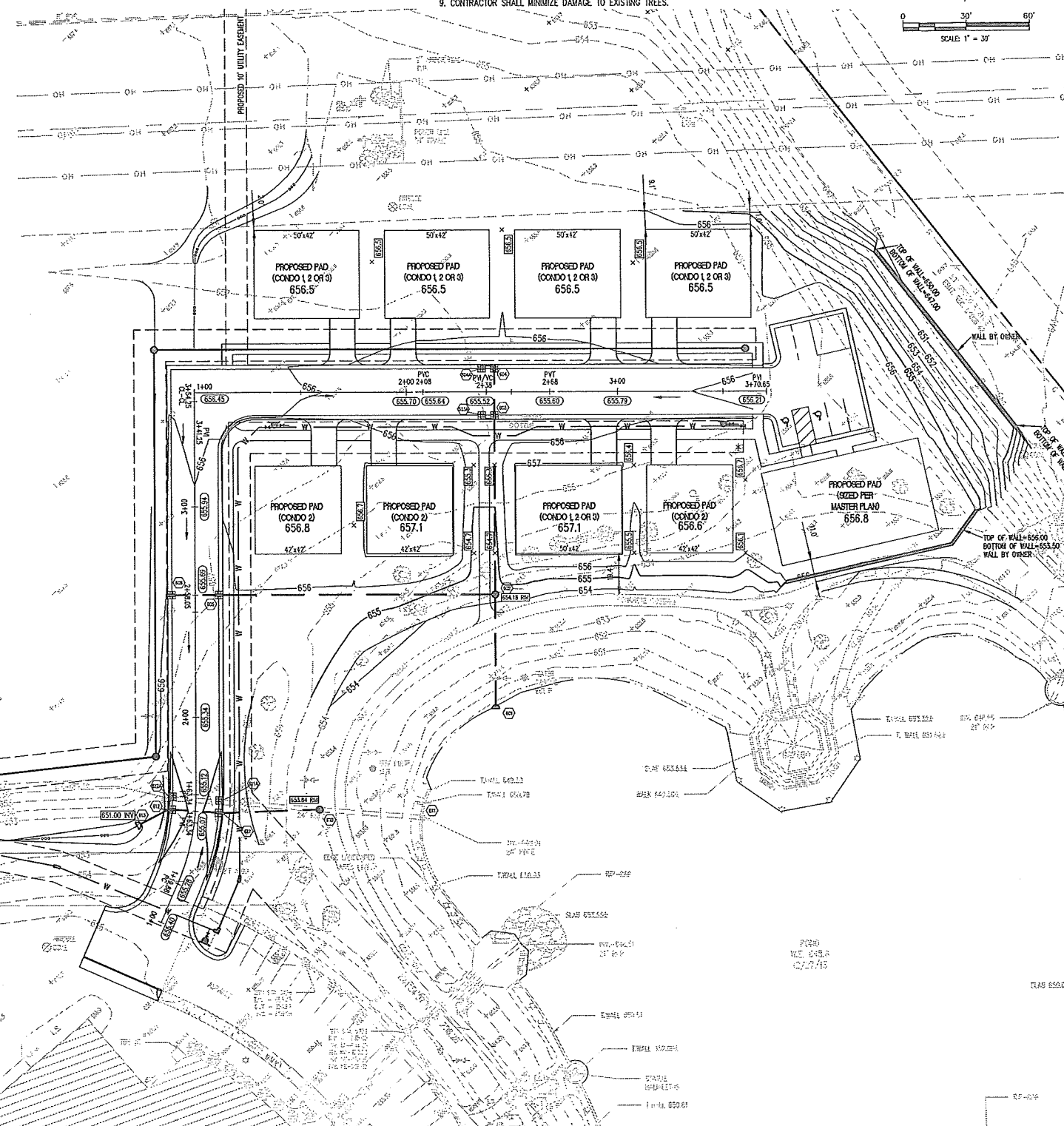
GENERAL NOTES

- ALL GRADES AT BOUNDARY SHALL MEET EXISTING GRADES.
- IT SHALL BE THE RESPONSIBILITY OF EACH CONTRACTOR TO VERIFY ALL EXISTING UTILITIES AND CONDITIONS PERTAINING TO HIS PHASE OF WORK. IT SHALL ALSO BE THE CONTRACTOR'S RESPONSIBILITY TO CONTACT THE OWNERS OF THE VARIOUS UTILITIES FOR PROPER STAKE LOCATIONS FOR EACH UTILITY BEFORE WORK IS STARTED. THE CONTRACTOR SHALL NOTIFY IN WRITING THE OWNER OR THE ENGINEER OF ANY CHANGES, OMISSIONS, OR ERRORS FOUND ON THESE PLANS OR IN THE FIELD BEFORE WORK IS STARTED OR RESUMED.
- STANDARD SPECIFICATIONS FOR CITY OF LAFAYETTE SHALL APPLY FOR ALL SANITARY SEWER AND WATER MAINS. STANDARD SPECIFICATIONS FOR TIPPECANOE COUNTY SHALL APPLY FOR ALL STORM SEWER.
- ANY PART OF THE SANITARY OR STORM SEWER TRENCHES RUNNING UNDER PAVED AREAS TO BE BACKFILLED WITH GRANULAR MATERIAL.
- THE SIZE AND LOCATION OF EXISTING UTILITIES SHOWN ARE PER INFORMATION PROVIDED BY THE RESPECTIVE UTILITY COMPANIES. ALL UTILITY COMPANIES SHOULD BE NOTIFIED PRIOR TO ANY EXCAVATION FOR FIELD LOCATION OF SERVICES. SEE SHEET C102 FOR UTILITY CONTACT INFORMATION.
- 5-FOOT WIDE SERVICE WALKS SHALL BE CONSTRUCTED THROUGHOUT.
- EXPANSION JOINTS ARE TO BE PLACED AT ALL WALK INTERSECTIONS. SIDEWALK SCORES ARE TO BE EQUALLY SPACED BETWEEN EXPANSION JOINTS, CONTRACTION JOINTS AND PERPENDICULAR TO SIDEWALKS AT 5' INTERVALS OR LESS WITH A CONTRACTION JOINT EVERY 20' OR LESS.
- ALL CONSTRUCTION ACTIVITY ON THIS SITE TO BE PERFORMED IN COMPLIANCE WITH APPLICABLE O.S.H.A. STANDARDS.
- CONTRACTOR SHALL MINIMIZE DAMAGE TO EXISTING TREES.



LEGEND

- PROPOSED STORM SEWER
- PROPOSED SANITARY SEWER
- EXISTING STORM SEWER
- EXISTING SANITARY SEWER
- PROPOSED WATER MAIN
- EXISTING WATER MAIN
- EXISTING OVERHEAD LINES
- PROPOSED CONTOUR
- EXISTING CONTOUR
- EXISTING ELEVATION
- NEW PAVEMENT GRADE
- ALL OTHER FINISH GRADES
- RIM
- INV
- FLOW ARROW
- PROPOSED FLOW LINE



FOR REVIEW & COMMENT

DATE: _____

THE SCHNEIDER CORPORATION (2014)

Schneider

THE SCHNEIDER CORPORATION
West Lafayette Office
1330 Win Hentschel Blvd.
Suite 100
West Lafayette, IN 47906-4156
Telephone: 765.448.6661
Fax: 765.448.6665
www.schneidercorp.com

Architecture
Civil Engineering
GIS + LIS
Home Builder Services
Interior Design
Land Surveying
Landscape Architecture
Transportation Engineering

FAITH MINISTRIES SENIOR HOUSING
LAFAYETTE, INDIANA

FAITH MINISTRIES
5528 EAST SR 26, LAFAYETTE, IN 47905

DATE: 2/18/14	PROJECT NO.: 2163.009
DRAWN BY: MAP/JEP	CHECKED BY: ---
SHEET TITLE: SITE DEVELOPMENT PLAN	
DRAWING FILE: L:\2K\2163\008\dwg\SENIOR HOUSING\2163009-C101.dwg	
SHEET NO.: C101	