



Essence of the tree

Trees for Gardens, Containers and Bonsai
JAPANESE MAPLE SPECIALIST

P.O. Box 323 Potter Valley, CA 95469

PRSRT STD
U.S. POSTAGE
P A I D
RIPON WI
PERMIT NO. 100

Fall 2010 Japanese Maples • New, Rare and Choice Selections
essenceofthetree.com • 888-489-1886



Essence of the tree

Trees for Gardens, Containers and Bonsai
JAPANESE MAPLE SPECIALIST

Fall 2010

- Must Have Maples for the Collector
- The Very Best Maples for Fall Color
- Stunning Bark for Color in the Depth of Winter
- The Classics- Historically the Best
- The Most Heat Tolerant Maples
- Outstanding Maple Selections for Colder Climates
- Choice Maples for Containers and Bonsai
- Rooted Cuttings for Bonsai
- Beautiful New Handmade Containers and Garden Ornaments

essenceofthetree.com
Highest Quality
Best Selection
Great Prices

Fall 2010 Japanese Maples
New, Rare and Choice Selections

Extensive Collection, Highest Quality

Essence of the tree
Trees for Gardens, Containers and Bonsai
JAPANESE MAPLE SPECIALIST

Multiple tree discounts
Special Collections
See page 3

Providing an extensive collection of the highest quality Japanese Maples
www.essenceofthetree.com • 888-489-1886

Dear Friends and Fellow Gardeners,

Excellent Customer Service

We are happy to hand pick your tree for you.

Whether for bonsai or the landscape, lower branching or strong central leader, let us know what you need.

We have an extensive collection of Japanese Maples.

For complete availability please see our website essenceofthetree.com or call us at 888-489-1886

Let us help you choose the best maple for your location.

Choosing which tree will provide the characteristics we desire as well as be compatible with our climate can be challenging. Over the years we have had the opportunity to learn the tolerances and weaknesses of the different cultivars. We are happy to help you find the perfect tree for your specific area and care for it. Please call or email us with your questions.

Special Services

Looking for a rare cultivar? Let us know and we will search through our sources to find it.

Do you need help identifying the name of a maple? We are happy to help. Please send as much information as you can including photos.

We encourage our customers to call us if a tree seems have a problem. Often we have the answers and an early call can save a tree.



My mother's garden holds many beautiful fall memories. Part of our Thanksgiving feast was collecting colorful leaves to decorate the table.

Front cover, A.p. Hogyoku in fall color

OUR CATALOG THIS FALL BRINGS YOU many of the newest introductions but also emphasizes the best of trees. These are the classics, many having been grown for hundreds of years. The best red fall color, always A.p. Osakazuki. For a big vigorous red dissectum you really should consider A.p. Tamukeyama. These trees have withstood the test of time and are in the famous gardens of the world.

We are offering a couple of new products for the maintenance of your trees. The new irrigation kit from our neighbor company Dripworks is exactly what is needed to take care of trees on your patio or deck and is quick and easy to assemble. What a relief to know my trees are taken care of while I am away. I used the Peace of Mind Fertilizer from Fox Farm on the trees in my garden and was very pleased with the results. The formula is perfect for the maples with low nitrogen and a slightly acid pH. They are a wonderful company to work with as well, very ecologically minded.

To compliment our trees we have found a lovely way to bring the element of stone to the container and compliment the perfect tree on your deck. Designed with Bonsai weights in mind these rock ropes are a small ornamental interpretation of the rock ropes found in the ancient gardens of Japan. The Buddha Fragments are so serene and give the impression of an archeological find when nestled into the garden under a tree.

We are always seeking the perfect tree. I am often talking to you about choosing the right tree for your garden considering first the cultural

conditions and next the needs in the landscape, color, height, width etc. What we also consider when choosing your tree is how you will use the tree, whether for bonsai, container or in the landscape. Please let us know what you are looking for in your tree whether a single trunk or a strong lower branch. We will be sure to choose the best tree for your needs.

As you can imagine I often find a tree that excites me with its new features however, my perfect trees are the trees that I have lived with for many years. The trees that suffered with me through the horrible late freeze, sustained damage and grew on carrying the scars and becoming more beautiful. The trees I planted 10 years ago and my garden grew up around them. The tree my puppy chewed on so many years ago, he has since passed away and I look at the tree with fond memories

Enjoy your trees,

Tricia

"You will find something greater in woods than books. Trees and stones will teach you that which you can never learn from masters."

— ST. BERNARD OF CLAIRVAUX

About Our Size Groups

Maples

We have had many customers call us exclaiming their pleasant surprise at the size and maturity of our trees. We are selling beautiful, well developed trees. We do not sell new grafts or liners as a size one tree. Although the tree may be in a one gallon pot the maturity of the tree is much different. We grow our trees slowly with plenty of space to allow for the development of the root system and branch structure. We also harden the trees off before they are shipped to be sure they are ready to be planted in the garden. We are committed to the success of your trees. Because maples vary greatly in their rate of growth as well as mature size we speak of their age as well as a size range. These size ranges exclude the smallest and the largest trees to provide an average for the majority. Our goal in production is to produce beautiful, healthy trees that are true to form with a pot full of roots.



Jade Gate

Sizes are indicated by height x width x caliper (diameter of trunk at base)

Group	Age	Container	Size
Size 1	2-3 years old	1 gallon	1'x.5'x.25" to 2'x 2' x .35"
Size 2	3-4 years old	3 gallon	2' x 1'x.35"to 3'x 2.5'x .5"
Size 3	4-5 years old	5 gallon	2.5'x 2'x .5" to 5'x3' x.75"
Size 4	5-6 years old	7 gallon	3'x 2.5'x .75" to 6'x5'x 1"

Older trees are listed and priced separately to help calculate the shipping charges.

Specimen trees are mature individuals listed with information specific to the tree and photographs.



About Landscape Height, Container Height and Zones

We provide the rate of growth in the descriptions of the individual cultivars as well as height in a container or in the landscape at 10 years. Cultural conditions influence growth rates considerably. USDA hardiness zone information is provided with each cultivar. If you don't know your what USDA zone you are in please check our website or go to: www.usna.usda.gov/Hardzone/

Green Cascade

Our Guarantee and Return Policy

Our plants are guaranteed healthy and true to name at the time of shipment. We realize the careful consideration that goes into choosing plants for your gardens and collections, also the time and effort to plant and care for them. Please notify us within 6 months if your tree fails to thrive and we will either replace your tree, offer you a credit for future purchase, or refund the cost of the plant. We cannot be responsible for unseasonable weather. Shipping charges are non-refundable. All items other than plants are unconditionally guaranteed and can be returned for a full refund of purchase price up to 30 days from receipt.

Quantity Discounts

Buy 3 get **10% off** | Buy 5 get **15% off** | Buy 7+ get **20% off**

Must Have Maples for the Collector 4
 Fall Color Selections 5
 Winter Bark Interest 6
 The Classics 7
 Trees for Containers & Bonsai 8-10
 Rooted Cuttings for Bonsai 9
 The Most Heat Tolerant 11
 Outstanding Selections for Colder Climates 12
 New Containers and Garden Ornaments 13
 Tools, Books and Hardgoods 14
 Shipping Information and Order Form 15

Special Collections

Exclusive of other discounts or specials

Blazing Fall Color Display Large upright red Osakazuki, Smaller upright orange, Hogyoku, low and wide combination red, orange and yellow, A.j. Green Cascade. See pg 5
Size 2 Osakazuki, Hogyoku, Green Cascade all for \$180.00



Stunning Winter Bark Color Combination Intense coral red Sango Kaku, Bright yellow and pink, Bihou, yellow to orange, Japanese Sunrise. See pg 6
Size 2 Sango Kaku, Bihou, Japanese Sunrise all for \$180



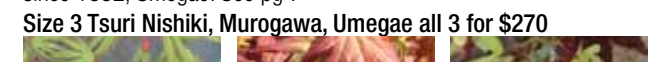
Colorful Maple Collection for Hot Climates Big, bold and red, Attraction, cool green with weeping form, Ryusen, vigorous cascading red laceleaf, Tamukeyama. See pg 11
Size 2 Attraction, Ryusen and Tamukeyama all for \$180



A Family of Trees for the Colder Climates- A.s. Moonrise for intense cherry red, A.s. Autumn Moon with an orange blush and the pale green of A.s. Aureum. See pg 12
Size 3 A.s. Moon rise, Size 4 A.s. Autumn Moon, Size 4 A.s. Aureum all 3 for \$315



A Collection of Classics- The small wide form and subtle spiral twist in the lobe of Tsuru Nishiki, deep pink spring, fan shaped amoenum leaf, named after the Muro River in Japan, Murogawa, slow growing, layered form, rich red with green seeds, since 1882, Umegae. See pg 7
Size 3 Tsuru Nishiki, Murogawa, Umegae all 3 for \$270



Must Have Maples for the Collector



Burgandy Jewel

Acer circinatum Burgandy Jewel

Landscape Ht: 12 Container Ht: 8 Zones: 5 to 9

There is a luminous, almost florescent quality to the color of the Acer circinatum cultivars and this is the best yet. Bright orange with a yellow vein and red stems in spring quickly changing to dark red, almost black with full sun through the summer. An upright growing tree with big orbicular leaves that curl under slightly at the lobes. I'm very pleased with the vigor of this tree, growing beautifully in the hottest and coldest conditions. Best color is achieved with protection from afternoon sun. I would love to see A.c. Burgandy Jewel planted with A.c. Sunglow for a stunning spring display of color. Size 2 Burgandy Jewel \$90.00



Johnnie's Pink

ACER palmatum Johnnie's Pink

Landscape Ht: 8 Container Ht: 5 Zones: 6 to 9

Harold Johnson from Alabama named this tree after his wife, Johnnie. I love this tree. One of the spring color types with soft pink spring emergence. Slowly leaf changes to an orange/brown color, unique in the maples. The leaves are small palmate, branching is fine, somewhat dense. Though vigorous in youth this tree is quite small in maturity. Size 2 Johnnie's Pink \$90.00

ACER palmatum Tiger Rose

Landscape Ht: 10 Container Ht: 6 Zones: 6 to 9

Sharply toothed deeply divided leaves emerge soft rosy pink in spring. The pronounced veins and the edge of the leaf become pale green against a white background. Two tone gold and yellow fall color. Wide spreading form with cascading branches, easy to grow, somewhat vigorous, will need protection from afternoon sun. Beautiful in either container or the landscape. Size 3 Tiger Rose \$120.00

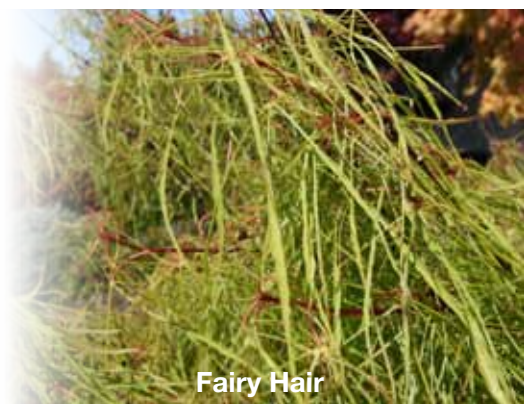


Tiger Rose

ACER palmatum Adrian's Compact

Landscape Ht: 3 Container Ht: 2 Zones: 6 to 9

See page 10 for picture and description
Size 3 Adriane's Compact \$120.00



Fairy Hair

Ap Fairy Hair

Landscape Ht: 3 Container Ht: 2 Zones: 6 to 9

Extremely fine threadlike linearlobum leaves emerge in spring pale green with a red tip changing to green in summer and gold and orange in the fall. An ethereal beauty developed by Talon Buchholz, I believe this tree may be identical to Koto Ito Komachi, although stronger and more stable. Very slow growing, perhaps no more than a couple of inches in a year with internodes stacked on top of one another. The most rare and unusual of all the new introductions. Size 1 Fairy Hair \$90.00



Akita Yatsubusa

Acer palmatum Akita Yatsubusa

Landscape Ht: 3 Container Ht: 2 Zones: 6 to 9

A wonderful addition to the dwarf group, even smaller than 'Sharp's Pygmy' with extremely short internodes. Spring emerges pink then changes to yellow and green for summer. The name means 'unusual autumn dwarf', with bright orange and red fall color. Good heat tolerance. Excellent for bonsai, small containers or bonsai. Size 3 Akita Yatsubusa \$80.00

Acer Palmatum Bihou

Landscape Ht: 10 Container Ht: 6 Zones: 6 to 9

See page 6 for picture and description
Size 2 Bihou \$90.00

Fall Color Selections



Maiku jaku

ACER japonicum Maiku jaku also known as Aconitifolium

Landscape Ht: 12 Container Ht: 8 Zones: 5 to 9

Named "Dancing Peacock", the large, dissected leaves have wonderful movement in the wind. The wide, upright form and show stopping orange and red fall color make this tree an excellent choice for either a larger container or a focal point in the garden. Also known as Aconitifolium.

Size 2 Maiku jaku \$80.00

Size 4 Maiku jaku \$150.00

ACER japonicum Green Cascade

Landscape Ht: 8 Container Ht: 6 5 to 9

A delicately cut lace leaf for colder climates with extraordinary fall color and a beautiful cascading form. Easy to grow, somewhat vigorous, with good sun tolerance in milder climates.

Size 2 Green Cascade \$80.00

Size 4 Green Cascade \$150.00



Green Cascade



Ever Autumn

ACER palmatum Ever Autumn

Landscape Ht: 12 Container Ht: 7 Zones: 6 to 9

The large leaves and strong branching of this tree create a commanding presence. Spring emergence is a delightful salmon pink changing to a medium green with orange tones for summer. As the name implies, fall color is an early display of intense color lasting for weeks. A vigorous, easy tree to grow. Size 3 Ever Autumn \$120.00
Size 4 Ever Autumn \$150.00



Exclusive of other discounts or specials

See page 3

Fall Color
Perhaps the feature they are best known for, Japanese Maples provide an incredibly diverse palette of long lasting color in the fall.

ACER palmatum Osakazuki

Landscape Ht: 18 Container Ht: 8 Zones: 5 to 9

The very best red fall color of all the Japanese Maples. Part of a classic Japanese planting, Osakazuki is the tall red fall color where Ichigyogi is the medium yellow and Hogyoku the small orange. Though similar in color through the summer the fall is quite a surprise. Osakazuki is a big, fast growing tree, a great asset to a larger landscape.

Size 2 Osakazuki \$80.00

Size 4 Osakazuki \$150.00



Osakazuki

ACER japonicum Vitifolium

Landscape Ht: 18 Container Ht: 12 Zones: 5 to 9

A large, vigorous tree with extraordinary fall color. The leaves are as big as your hand. Fall color of orange, yellow and red comes early and fast creating a fire in the sky. You can see this tree for miles in fall color. Fall color is consistent even in warmer climates.

Size 3 Vitifolium \$120.00

Size 4 Vitifolium \$150.00



Vitifolium

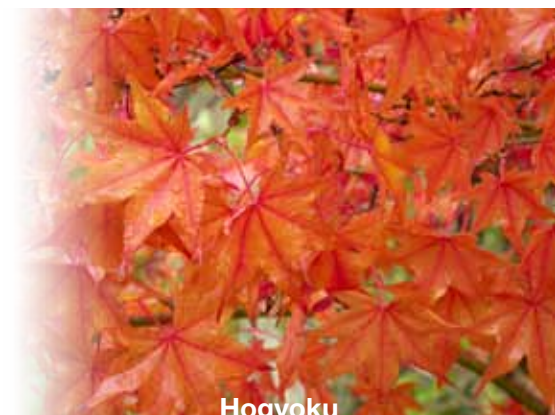
ACER palmatum Hogyoku

Landscape Ht: 12 Container Ht: 8 Zones: 5 to 9

An older cultivar most known for the pumpkin orange fall color. An upright somewhat stocky structure, slower growing and smaller than most of the trees in the amoenum group. A stunning display of fall color when planted with the brilliant red 'Osakazuki'. Easy to grow and beautiful year round, a classic for every garden.

Size 2 Hogyoku \$80.00

Size 4 Hogyoku \$150.00



Hogyoku



Pacific Fire

ACER circinatum Pacific Fire

Landscape Ht: 12 Container Ht: 8 Zones: 5 to 9

The intense shiny orange-red bark of this northwestern native is glorious against the snow or the gray winter sky. Lime green orbicular leaves unfold like fans. Emerges later in spring than the Acer Palmatum, making this an excellent red bark winter interest for colder areas. Delightful to grow, none of the die back issues common to other red bark maples. Upright form with open habit that contrasts the leaves to the bark.

Size 3 AC Pacific Fire \$120.00

Size 4 AC Pacific Fire \$150.00

ACER palmatum Japanese Sunrise

Landscape Ht: 12 Container Ht: 6 Zones: 6 to 9

The transitions of color in the bark of this tree as the winter progresses are like nothing I've seen on any other tree. As soon as the temperatures begin to drop the bark begins to change color to yellow at the trunk, the colder it gets the further up through the branching the color moves from pale yellow through orange to intense red at the tips. Lovely upright open form. Easy to grow.

Size 2 Japanese Sunrise \$80.00



Japanese Sunrise

Acer Palmatum Bihou

Landscape Ht: 10 Container Ht: 6 Zones: 6 to 9

I first saw this tree in the southeast in October. The yellow bark with an overcast of orange is beautiful, like no other maple I've ever seen. The buds emerge red unfolding a green leaf, changing to yellow with specks of orange for fall. A vigorous, upright growing tree with good sun tolerance. Beautiful in combination with any of the red bark maples to create a stunning winter interest in the garden.

Size 2 AP Bihou \$90.00



Bihou

Bark Interest

We see the bones of the garden in the winter landscape. I find the winter silhouette of these trees elegant and their color a welcome surprise during the grey days of winter.

ACER palmatum Sango kaku

Landscape Ht: 18 Container Ht: 8 Zones: 6 to 9

Known as the coral bark maple, the red bark is a wonderful silhouette against the snow or a grey winter landscape. Spring leaves emerge pale green, a great contrast to the bark. Fall is a clear yellow. Very fast growing and upright, this tree is disposed to disease from spring frost damage and is best grown in warmer climates. For bright red bark and green leaves in colder climates consider Acer circinatum 'Pacific Fire'.

Size 2 Sango kaku \$80.00

Size 4 Sango kaku \$150.00



Sango kaku

ACER palmatum Tsukushi gata

Landscape Ht: 9 Container Ht: 6 Zones: 6 to 9

Tsukushi gata is in a redwood box on my deck and I daily appreciate the lovely open form with fine pale green branches. Spring is a stunning red changing to the rich-red brown summer color, we refer to this tree as one of the chocolate trees because the color is so lush. As summer progresses the vein in the leaf changes to green for a contrast to the brown, then bright red fall. Slow growing, best with some shade, a personal favorite of mine.

Size 3 Tsukushi gata \$120.00



Tsukushi gata

ACER palmatum Tsuru nishiki

Landscape Ht: 8 Container Ht: 4 Zones: 6 to 9

A wonderful tree for unique textural interest, this was one of my mother's favorite trees. Deeply divided leaves are finely serrated along the edge and have a course texture. Narrow lobes twist individually from the stem. Leaves emerge green with a rose blush and turn a deep blue green for summer. Fall is an incredible show of orange and yellow. Slow growing, wide, open layered form.

Size 2 Tsuru nishiki \$80.00

Size 3 Tsuru nishiki \$120.00



Tsuru nishiki

ACER palmatum Muro gawa

Landscape Ht: 10 Container Ht: 6 Zones: 6 to 9

Dramatic color changes though the seasons. Deep pink in spring, red with a green vein in summer, fading to orange late summer, fall is orange, red and crimson. The yellow-green bark is a striking contrast and along with the wide form and pendulous branches provides a beautiful winter silhouette. A classic tree named after the Muro river in Japan.

Size 2 Muro gawa \$80.00



Muro gawa

ACER palmatum Umegae

Landscape Ht: 8 Container Ht: 4 Zones: 6 to 9

There are a group of maples I call the chocolate trees because of the rich purple-brown tones the have in the summer. This is dark chocolate, with all the creamy depth of color you expect. Emerging bright red in spring, changing to chocolate with bright green veins, seeds and bark contrasting against the leaves. Outstanding crimson fall color. The sharply pointed, 7 lobed leaves add texture to the picture. More cold tolerant than many maples, needs protection from hot sun, not tolerant of hard water or alkaline soil. Upright with a wide canopy, slow growing.

Size 3 Umegae \$120.00



Umegae



ACER palmatum Tsuma gaki

Landscape Ht: 6 Container Ht: 4 Zones: 6 to 9

Red-tipped pale green leaves emerge in spring slowly changing to a medium green in the summer then red in the fall. Very similar to Tsuma Beni though a slightly sturdier leaf makes this tree easier to grow. Upright, low and wide open form.

Size 2 Tsuma gaki \$80.00



Tsuma gaki

Outstanding Selections for Colder Climates



Sunglow

ACER circinatum Sunglow

Landscape Ht: 10 Container Ht: 5 Zones: 5 to 9

A cultivar from the species native to Northern California and southern Oregon, A.c. Sunglow is luminous orange in spring changing to pale green in summer and yellow with orange in the fall. Small upright growth habit. Like the species, needs shade. Size 3 AC Sunglow \$120.00

ACER shirasawanum Aureum

Landscape Ht: 12 Container Ht: 8 Zones: 5 to 9

Chartreuse orbicular leaves in spring are luminous as the sun goes through them, this tree is desired by everyone who sees it. The leaves remain a very pale green in the summer and change to red and yellow for the fall. Upright in form, very slow growing. A cultivar of the Chinese species Acer shirasawanum, best suited to cooler climates. Size 4 As Aureum \$160.00
Size 3 AS Aureum \$140.00



Aureum

ACER palmatum Yasemin

Landscape Ht: 10 Container Ht: 8 Zones: 5 to 9

Bright red deeply divided leaves emerge in spring changing to deep red in summer with an abundance of translucent red seeds that are held above the leaf, typical of acer shirasawanum, then scarlet in the fall. The structure is a smooth curving upward growth. A somewhat fast growing tree an excellent choice for colder climates.

Size 3 Yasemin \$120.00
Size 4 Yasemin \$150.00



Yasemin



Exclusive of other discounts or specials

Special
Cold Climate
Collection

See page 3



Autumn Moon

ACER shirasawanum Autumn Moon

Landscape Ht: 12 Container Ht: 8 Zones: 5 to 9

The lobes on the leaf of Autumn Moon are slightly longer than Aureum and the spring color is yellow slowly changing to pale green for summer and orange-red for fall. A lovely open form with plenty of space between internodes to show off individual branches and leaves. Size 4 AS Autumn Moon \$150.00

Acer Shirasawanum Moonrise

Landscape Ht: 12 Container Ht: 8 Zones: 5 to 9

We were stunned by the bright red spring emergence on this tree. Add the wonderful chartreuse summer color, a vigorous growth habit and an increased sun tolerance and you can see why we are excited about this tree. Big, beautiful open form, an excellent choice for those of us who love Aureum but don't have the shade. Size 3 Moonrise \$120.00



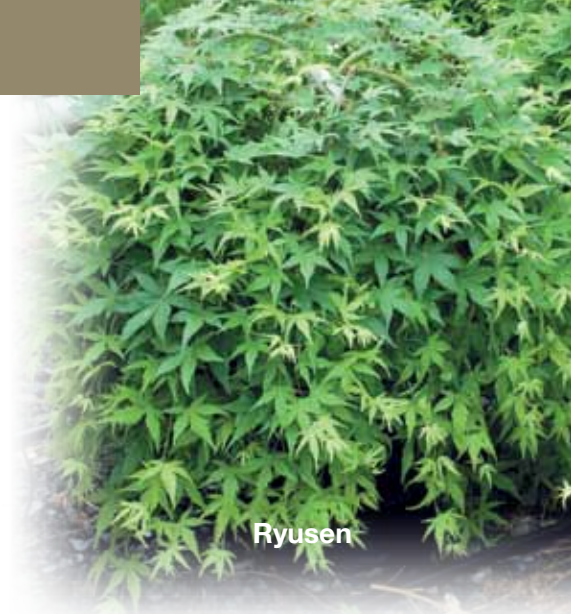
Moonrise

The Most Heat Tolerant

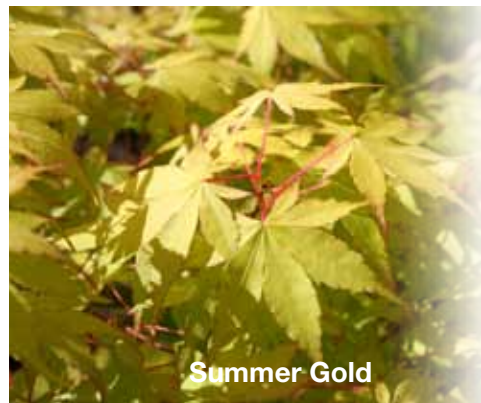
A.p. Ryusen

Landscape Ht: 5 Container Ht: 3 Zones: 5 to 9

A new weeping palmate, like a waterfall of stars, offers incredible possibilities with its great vigor and totally weeping form. I first saw this tree in a container on top of a pedestal cascading down 3' below the container! As vigorously growing as the species, consider staking to create an 'S' curve for vertical structure. Excellent sun and heat tolerance. Ryusen is later to emerge than most weeping trees and therefore more suited to climates with late spring freezes. This tree would be lovely next to a water effect, a wonderful addition to any garden. Size 2 Ryusen \$90.00



Ryusen



Summer Gold

Acer palmatum Summer Gold

Landscape Ht: 12 Container Ht: 8 Zones: 6 to 9

The best golden color through the summer with no burn in full sun! As the summer gets hotter the golden yellow color becomes brighter. Planted at poolside in the hottest part of his garden in Southwestern France, Gomerio has had no burn through the summer. An upright form with a palmate leaf and a medium growth rate. An excellent new introduction. Size 2 Summer Gold \$90.00



Exclusive of other discounts or specials

Special
Heat Tolerant
Collection

See page 3



Attraction

ACER palmatum Attraction

Landscape Ht: 20 Container Ht: 12 Zones: 5 to 9

Attraction, also known as Superbum, is the tree at the entrance of the nursery, one of the first we planted. We needed a big red tree to greet our customers. There was concern about the full southern exposure and the reflected heat off the road. Attraction has performed beautifully. The spring is bright red slowly deepening and changing to a glowing orange in the heat of summer. Fall is flame red. Vigorously growing, excellent heat tolerance, a great tree for the landscape.

Size 2 Attraction \$80.00
Size 4 Attraction \$150.00



Fireglow

ACER palmatum Fireglow

Landscape Ht: 10 Container Ht: 6 Zones: 5 to 9

When the sun comes through the leaves of this tree the effect is a breathtaking luminous red. The best small red tree. Very sun and heat tolerant. Developed in Alabama by Harold Johnson, grows in full sun in the hot, humid south. Size 2 Fireglow \$80.00

ACER palmatum Tamukeyama

Landscape Ht: 6 Container Ht: 3 Zones: 5 to 9

My personal favorite of the red dissectum, a cultivar from Japan in production for many years. The name means 'Tribute to the Mountain'. Different shades of red each season, dark red bark for winter interest. Vigorous, a pleasure to grow. Size 2 Tamukeyama \$75.00



Tamukeyama



Wilson's Pink Dwarf

ACER palmatum Wilson's Pink Dwarf

Landscape Ht: 6 Container Ht: 4 Zones: 6 to 9

Tiny little leaves, about the size of your little fingernail, emerge bright pink. The leaves mature to about 1.5" wide and slowly transition to a medium green for summer. Upright form with fine stems and short internodes, perfect proportion, excellent for bonsai, container or the landscape. Easy to grow sun and heat tolerant. Early to emerge in spring, protect from late frosts.

Size 2 Wilson's Pink Dwarf \$70.00



Beni kumo no sa

ACER palmatum Beni kumo no sa

Landscape Ht: 4 Container Ht: 2 Zones: 6 to 9

As finely dissected as 'Red Filigree Lace', 'Beni Kumo No Sa' has the delicate appearance of a spider's web. Spring is bright red (dusty rose in shade) changing to a rusty orange tone in the summer and red in the fall. Extremely slow growing with dense cascading form. Not at all difficult to grow, needs protection from extreme heat, will take a lot of sun in milder climates. Must protect from late freezes.

Size 2 Beni kumo no sa \$80.00

Size 3 Beni Kumo No Sa \$120.00



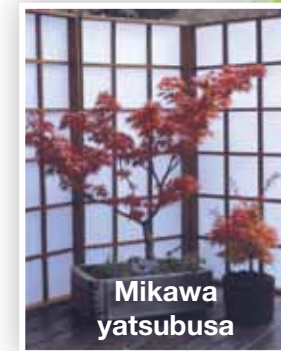
Adrian's Compact

ACER palmatum Adrian's Compact

Landscape Ht: 3 Container Ht: 2 Zones: 6 to 9

A new addition to the dwarf group, excellent red color holds in shade, red orange fall color. Smaller than Shaina or Aratama, and NOT a witches broom which I believe makes it a stronger plant and greater longevity. Slow growing, dense growth needs good air circulation.

Size 3 Adriane's Compact \$120.00



Mikawa yatsubusa

ACER palmatum Mikawa yatsubusa

Landscape Ht: 5 Container Ht: 3 Zones: 5 to 9

The very best of the upright dwarfs. In spring, each pale green leaf is layered one on top of another as they emerge. Very slow growing with sturdy upright structure. Glorious red fall color. Excellent as a focal point in a small garden on in a container for continuous seasonal changes.

Size 3 Mikawa yatsubusa \$120.00

Size 4 Mikawa Yatsubusa \$150.00



Mikawa yatsubusa

Container & Bonsai

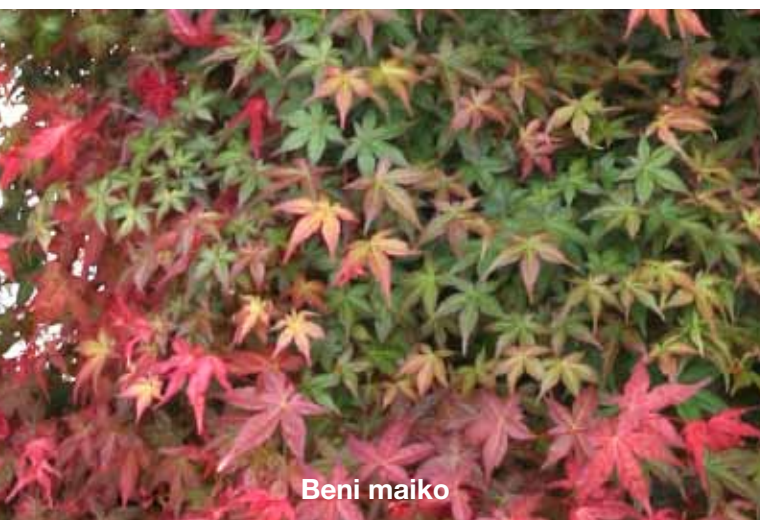
Also excellent choices for a small intimate garden.

ACER palmatum Beni maiko

Landscape Ht: 6 Container Ht: 4 Zones: 6 to 9

The smallest of the spring color types, Beni Maiko means 'red dancing girl' in Japanese. Bright shiny red leaves in spring slowly change to brick red and green as summer progress becoming red, orange and yellow in the fall. Small leaves, fine delicate structure in an upright form. Lovely for a small garden, bonsai or container. Vigorously growing in youth, a very heat tolerant cultivar.

Size 4 Beni maiko \$150



Beni maiko

Acer palmatum Akita Yatsubusa

Landscape Ht: 3 Container Ht: 2 Zones: 6 to 9

A wonderful addition to the dwarf group, even smaller than 'Sharp's Pygmy' with extremely short internodes. Spring emerges pink then changes to yellow and green for summer. The name means 'unusual autumn dwarf', with bright orange and red fall color. Good heat tolerance. Excellent for bonsai, small containers or bonsai.

Size 3 Akita Yatsubusa \$80.00



Akita Yatsubusa

See the new Photo Galleries on our website.

We have added many new informative articles and links to help you with selecting and caring for your trees. Please visit our website for complete inventory availability.

www.EssenceoftheTree.com



Rock Ropes

Rock Ropes

Designed with Bonsai weights in mind these rock ropes are a small ornamental interpretation of the rock ropes found in the ancient gardens of Japan. A lovely way to bring the element of stone to the container and compliment the perfect tree on your deck. Also useful for the bonsai in training. Made by a local California artist, available here exclusively. Each piece is hand made with three stones, Unakite, Carnelian and Aquamarine, and copper wire approximately 5" long. The stones are polished to show the depth of color and pick up the light. The detail in the wire work is a delightful surprise. They are a beautiful compliment to the color of the leaves and are striking with the winter silhouette of the tree. \$30. each



Sharp's Pygmy

ACER palmatum Sharp's Pygmy

Landscape Ht: 3 Container Ht: 2 Zones: 6 to 9

Frequently used for bonsai, the perfect proportion of this tree is very attractive in a container or the small garden. The small sharply leaves have a curve along the vein that add an interesting textural effect. Easy to grow, though very slow. Heat tolerant.

Size 3 Sharp's Pygmy \$120.00





Beni shichihenge

ACER palmatum Beni shichihenge

Landscape Ht: 8 Container Ht: 5 Zones: 6 to 9

This tree has the most intensely pink spring color of any variegated maple and the longest lasting as well. The name means "Seven Red Apparitions" and I believe they are referring to the shadowy appearance created from the distinct two tone leaf. Summer changes the pink to cream creating the effect of a cool blue-green. A vigorous grower that benefits from pruning to maintain size. Size 3 Beni Shichihenge RC \$140.00

ACER palmatum Bonfire (Also See Seigai)

Landscape Ht: 6 Container Ht: 4 Zones: 6 to 9

A very old cultivar highly sought by bonsai artists. Excellent red spring color changes to green for summer and scarlet in the fall. Very small palmate leaves, an upright growth habit with twiggy branching and short internodes make this tree an ideal choice for bonsai, containers or the focal point in a small garden space. Size 3 Bonfire RC \$140.00



Bonfire

Rooted Cuttings for Bonsai

Rooted cuttings are highly sought where the presence of a graft line may be undesirable. These trees have had reduction pruning cuts made in preparation for Bonsai or Container.



Ukigumo



Ukigumo

ACER palmatum Ukigumo

Landscape Ht: 6 Container Ht: 4 Zones: 6 to 9

Named 'Floating Cloud' for the heavily variegated leaves that are almost completely white at times. Spring emergence is pastel pink. This tree responds quickly to cultural situations reverting to a plain green amoenum leaf with either too much fertilizer or sun. My tree matured to have perfectly white layers of branches in the under story and a canopy of amoenum leaves on top. Small, quite upright in form. Gold and yellow in the fall. Size 3 Ukigumo \$140.00

ACER palmatum Sagara nishiki

Landscape Ht: 9 Container Ht: 5 Zones: 6 to 9

One of my favorite variegated trees, elegant golden yellow traces the edge of the leaf with occasional sprinkles of gold in the body of the leaf. A small slow growing tree with an upright form, medium sized leaves, moderately spaced internodes and open form. East to grow, requires protection from hot sun. The restrained growth habit and beautiful detail make this tree well suited for bonsai or container garden. Size 3 Sagara nishiki \$120.00



Sagara nishiki



Arakawa

ACER palmatum Arakawa

Landscape Ht: 12 Container Ht: 8 Zones: 6 to 9

One of the rough bark maples, beautiful deeply fissured bark. Upright form with outstanding fall color. Very easy to grow and heat tolerant. Though vigorously growing this tree is highly desirable for Bonsai when grown as a rooted cutting. Size 3 Arakawa RC \$140.00



Michelangelo's Eyes

Michelangelo's David's Eyes

David's eyes peer intensely through the garden. At first glance you wonder what it is you see, then the gaze is locked and you are engaged with the moment. A complex and elegant piece of sculpture for the garden. Sure to draw attention and raise questions. Cast from cement with unique hand applied metal finish, the coloration on each piece is unique. Approximately 5" tall and 14" wide Michelangelo's David's Eyes \$70.00



Buddha Fragment

Buddha Fragment

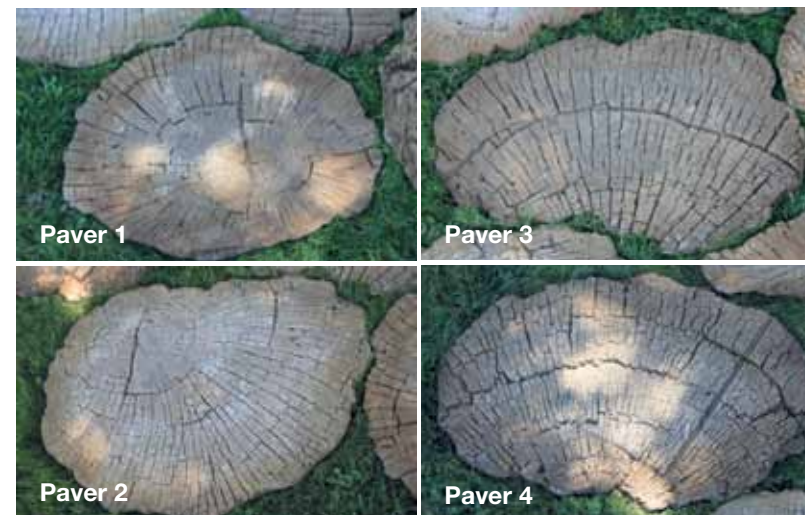
I found myself sigh from the calm peaceful presence of this sculpture. Designed as fragments of monumental sculptures, suggested placement in the garden is as a fallen artifact discovered for the first time. The Buddha Fragments can also be hung on a wall or a large tree. Each piece is unique, handmade by the artist from fiber and reinforced cement and will naturalize to become a part of the garden. Easily withstands harsh winters without damage. Though they may hairline crack the reinforced concrete will not break. Approximately 14" by 14" weighing 9lbs. Please be aware each piece is handmade and colors will vary slightly though in the same range of earth tones. \$140 each

Organic Bowl

We are always searching for new containers that are worthy of the maples. These handmade bowls are a beautiful addition to our collection of containers adding a new organic feel and a subtle range of natural colors; soft watery green and rusty tones. The irregular edge provides an opportunity to display either a beautiful trunk line, or a combination of companion plants. The Organic Bowls are made from molds with textures found in nature creating the look of aged stone. Made of an eco-friendly, cement based material with 60% recycled materials, more durable than cement at considerably less weight. Handcrafted, no two are exactly alike. Each container has a foot for stability and drainage. Small 10" wide by 6" deep Medium 20" wide by 8" deep Large 27" by 12" deep
Organic bowl 26" \$200.00
Organic Bowl 20" \$125.00
Organic Bowl 12" \$50.00



Organic Bowl



Paver 1

Paver 3

Paver 2

Paver 4

Replicated Aged Wood Pavers

Made in the studio of the Artist in Northern California, these garden pavers have the look of natural aged wood, but are made of an eco-friendly, cast stone material made of 60% recycled material. The cast aged wood pavers allow for beautiful and durable natural textures replicated sustainably. Molds are created with aged wood that has fallen naturally, not cut down. Multi-functional, these replicated wood pavers can be used to create pathways, as tabletops, artistic wall pieces, or planter bases. Handcrafted, no two are exactly alike. Medium Replicated Aged Wood Paver 24" \$48.00
Small Replicated Aged Wood Paver 18" \$32.00



Bonsai with Japanese Maples- Peter Adams

In this richly illustrated volume, internationally renowned bonsai expert Peter Adams shows how to Care for Japanese maples Develop various trunk characteristics Refine the appearance of trunks and roots Develop small specimens, or shohin Assess the artistic quality of actual specimens and make improvements. Bonsai With Japanese Maples- Peter Adams \$40.00

GardenCut Shears

GardenCut Shears have incredibly sharp carbon-steel blades that can cut 1/2 inch branches quite readily and strong pointed tips that permit snipping in very tight spaces. They are also almost indestructible. Even in our greenhouses, where they get watered regularly right along with the trees, they last for years. Bright red handles help you find them, and cushion your grip. They are great for keeping your container trees well groomed, as well as many other chores you need them for. Gardencut Shears \$15.00

Dynagrow ProteKt

ProteKt provides higher levels of silicon and potassium to build stronger cell walls for protection against environmental stresses such as heat and wind. Our friends in the hot, dry Southwest have found using ProteKt consistently will reduce and even eliminate leaf burn. Use at 1/2 teaspoon per gallon every watering for best results. Dyna Grow ProteKt \$8.00

Dynagrow 'Grow' Liquid Fertilizer

choice for fertilizing trees in containers. Dynagrow provides complete nutrition with all 6 macronutrients as well as 10 micronutrients. A liquid fertilizer providing all that is needed for your trees. The lower nitrogen to phosphorus ratio promotes slow steady growth and strong roots. Lower soluble salts reduce the salt build up so common from liquid fertilizer and a problem particularly for maples. We use Dyna-grow 'Grow' on all of our young trees here at the nursery at a rate of 1/2 teaspoon per gallon 1 time per week. Dyna-gro 'Grow' 8oz. \$6.00 Dyna Grow 'Grow' 32 oz. \$20.00

Superthrive

A little bit goes a long way to insure success any time you are working with the roots. A vitamin and hormone supplement, whether potting up, root pruning or transplanting a soak in Superthrive stimulates the plant to grow preventing shock issues. This product has been around for a long time and it works! Superthrive 2 oz. vitamin hormone supplement \$6.00



Silky PocketBoy 130 fine

The PocketBoy 130mm, fine teeth is a compact lightweight folding saw with an extraordinary cutting capacity made by SilkySaws, manufacturers of the highest quality available. A delight to use, the blade features rust-resistant, hard chrome-plated, blade with an impulse-hardened non-set tooth design, 22 teeth per inch, for a smooth clean cut. A rubber handle provides a sure, comfortable grip and the plastic flip-lock carrying case with belt clip adds convenience in the garden. Silky Pocket Boy 130-fine teeth \$28.00

Peace of Mind® Japanese Maple Organic Fertilizer (4-8-5)

Finally, a fertilizer that's blended for the unique needs of Japanese maples. Japanese Maple Fertilizer uses a lower-nitrogen formula that supports a natural tendency to grow in cool weather environments. This means less leaf scorch in summer—even in sun—and a smooth transition to dazzling fall color. A lower pH helps the roots take up the nutrients they need. 4 lbs. \$8.



Japanese Maples by J.D. Vertrees and Peter Gregory*

What J.D. Vertrees began in 1978 with the first addition Peter Gregory continues with excellence. The photos and clear descriptions of the trees as well as very useful cultural information make this book a necessity for any collector and a wonderful book for any gardener interested in exploring the world of Japanese Maples. I am so grateful to Peter Gregory for his continued commitment to the trees and his help clarifying the names, especially important with all of the new introductions. \$50.00



Container Garden Irrigation Kit

A custom kit for irrigating the container trees on your patio or deck. The maples do best when humidity is maintained. This kit contains everything needed to provide both the mist for humidity and a thorough soak for your container trees. Easy to assemble, no tools needed, includes filter and pressure reducer as well as enough fittings for at least 10 containers. The system can be attached to an existing timer or a battery timer. \$85.00

Tried and true, the products we use here in the nursery.



Container Garden Irrigation Kit

How We Ship

Shipping plants is all about timing. It is a challenge to coordinate the growth cycles of the trees with the climate where they are grown and the climate where they are being shipped.

Fall shipping begins in mid-September, after the heat of summer has passed. A minimum of 6 weeks frost free weather where the tree is being shipped is needed to establish the roots for fall planting. We recommend fall shipment for milder climates to take advantage of root growth prior to dormancy. All of California, the coastal Northwest, the Southwest (except high mountain areas) and the Southeastern United States do best with fall shipment.

Shipments begin in February to the Southern States, the hottest areas of the country. This allows the trees to emerge from dormancy on schedule and benefit from spring root growth prior to the stress of summer heat. The colder Northern climates begin receiving trees after the last frost date to avoid damage from early emergence.

Plants are pulled from regular inventory as they are purchased and flagged "sold" with your name and ship date so you receive the best selection regardless of your ship date. On the Friday prior to your ship date we begin preparation for shipment with watering and inspection. On Sunday the trees are depotted, excess soil is removed from the roots and the rootball is enclosed in a plastic bag with moist peat moss to provide water during travel time. Plants are shipped on Monday and Tuesday to ensure arrival prior to the weekend. We use both USPS Priority Mail and UPS ground to California, Oregon, Nevada and Washington and either USPS Priority or UPS 3-Day Select service to all other states. These services provide arrival within 3 days and allow us to track the packages. **Because the sizes vary, predetermining shipping charges on older and specimen trees is not possible. You will be charged for handling when the order is placed and the actual cost of shipping will be charged to your credit card after shipment. We will email a separate receipt for this charge.**

These shipping schedules and methods have been developed from the experience of several generations of mail order garden nurseries and our knowledge of the growth habits of the trees. We do recognize there are unique microclimates and some gardeners have greenhouses to provide protection and spring sometimes comes early (or late!). Please call or email us for special ship date requests. We need to hear from you before or by the Friday prior to your ship date to change shipping arrangements. We are happy to accommodate you.

Plants should be delivered to a location out of the sun. Please open your box as soon as possible and let us know if there are any problems with your order. We seldom have damage during shipment or errors during fulfillment however if there is a problem we want to resolve it right away. Trees can be held in a cool dark place for up to 3 days after arrival until planting. We will include planting directions with your tree or you can download a copy from our website to prepare before arrival.

Hardgoods will be shipped on the Wednesday following your order or with your plant order.

Shipping charges are determined by the original retail price prior to any discounts or sales. Please call for shipments outside of the Continental United States.

CA, OR, NV, WA		Other Continental United States	
Merchandise total	3-day	Merchandise total	3-day
0-\$20.00	\$11.00	0-\$20.00	\$16.50
\$20.01-\$60.00	\$16.50	\$20.01-\$60.00	\$22.00
\$60.01-\$100.00	\$22.00	\$60.01-\$100.00	\$33.00
\$100.01-\$160.00	\$27.50	\$100.01-\$160.00	\$44.00
\$160.01-\$200.00	\$33.00	\$160.01-\$200.00	\$49.50
\$200.01-\$300.00	\$38.50	\$200.01-\$300.00	\$55.00
\$300.01-\$400.00	\$44.00	\$300.01-\$400.00	\$66.00
\$400.01 and up	16.5%	\$400.01 and up	19.8%

How to Order

By Phone: tollfree 888-489-1886 Our knowledgeable staff is on the phone Monday through Friday 9-5pm PST

We always enjoy hearing from you. We care about the trees and are committed to your success. We are happy to discuss individual trees in the inventory regarding structure and size to ensure you receive the perfect tree for your location and application. Each call is answered personally; we don't have a machine to put you on hold. If you get our answering service during these hours we are on the line assisting another customer and will call you back promptly. If there is a specific time you would like us to return the call, please let us know. We never share phone numbers.

Online: www.essenceofthetree.com Our website is extensive will hundreds of beautiful photographs, informative articles and search tools to help you find the perfect tree for your application. You can order online with confidence. The secure server will protect all of your credit card and private information. We carefully check each order placed online to and will call you if there are any questions.

Email: contactus@essenceofthetree.com Email will be answered within 48 hours except at the busiest times of the year. We are often asked to identify trees and help with diagnosis and treatment of problems. Please include as much information as possible so we can best assist you.

Mail: Essence of the Tree, PO box 323, Potter Valley, CA. 95469-0323 We are primarily a mail order nursery in a small rural town. Visitors are welcome by appointment. There are many trees to large to ship available only at the nursery. If you would like to visit the nursery, please contact us to schedule an appointment. We will send you directions and set aside the time to show you the trees.

We look forward to hearing from you.

Qty	Item Description	Orig. Price Total*	Sale Price Total
1			
2			
3			
4			
5			
SUBTOTAL			
Shipping & Handling			
*(Please calculate from Orig. Price Total. See chart below)			
Sales Tax			
(On deliveries to CA only. Add 8.25% of subtotal)			
LESS: Redemption of Gift Certificate or Merchandise Credit (please enclose)			
TOTAL Balance DUE			

Ship To:

Name: _____ Phone: _____
 Street Address (no P.O. Box) _____ Fax: _____
 City / State / Zip _____ E-mail: _____

Method of Payment:

Check Money Order American Express MasterCard VISA Discover Card
 Card Number _____ Expiration Date: _____
 Signature _____

Our Privacy Policy

In our relationship with you we will ask for information to process your orders, send you catalogs and our e-mail newsletters. We will provide a safe method to collect this information and protect the security of the information. We respect your privacy. We will always honor your request to have your personal

information removed from our data base. We sometimes share our mailing lists with other companies that provide similar products and services that may be of interest to you. If you would prefer we not share your information please let us know. We never share email addresses.