

CA ERwin[®] Data Modeler

Release Notes

Release 9.5.0



This Documentation, which includes embedded help systems and electronically distributed materials, (hereinafter referred to as the "Documentation") is for your informational purposes only and is subject to change or withdrawal by CA at any time. This Documentation is proprietary information of CA and may not be copied, transferred, reproduced, disclosed, modified or duplicated, in whole or in part, without the prior written consent of CA.

If you are a licensed user of the software product(s) addressed in the Documentation, you may print or otherwise make available a reasonable number of copies of the Documentation for internal use by you and your employees in connection with that software, provided that all CA copyright notices and legends are affixed to each reproduced copy.

The right to print or otherwise make available copies of the Documentation is limited to the period during which the applicable license for such software remains in full force and effect. Should the license terminate for any reason, it is your responsibility to certify in writing to CA that all copies and partial copies of the Documentation have been returned to CA or destroyed.

TO THE EXTENT PERMITTED BY APPLICABLE LAW, CA PROVIDES THIS DOCUMENTATION "AS IS" WITHOUT WARRANTY OF ANY KIND, INCLUDING WITHOUT LIMITATION, ANY IMPLIED WARRANTIES OF MERCHANTABILITY, FITNESS FOR A PARTICULAR PURPOSE, OR NONINFRINGEMENT. IN NO EVENT WILL CA BE LIABLE TO YOU OR ANY THIRD PARTY FOR ANY LOSS OR DAMAGE, DIRECT OR INDIRECT, FROM THE USE OF THIS DOCUMENTATION, INCLUDING WITHOUT LIMITATION, LOST PROFITS, LOST INVESTMENT, BUSINESS INTERRUPTION, GOODWILL, OR LOST DATA, EVEN IF CA IS EXPRESSLY ADVISED IN ADVANCE OF THE POSSIBILITY OF SUCH LOSS OR DAMAGE.

The use of any software product referenced in the Documentation is governed by the applicable license agreement and such license agreement is not modified in any way by the terms of this notice.

The manufacturer of this Documentation is CA.

Provided with "Restricted Rights." Use, duplication or disclosure by the United States Government is subject to the restrictions set forth in FAR Sections 12.212, 52.227-14, and 52.227-19(c)(1) - (2) and DFARS Section 252.227-7014(b)(3), as applicable, or their successors.

Copyright © 2013 CA. All rights reserved. All trademarks, trade names, service marks, and logos referenced herein belong to their respective companies.

Contact CA Technologies

Understanding your Support

Review [support maintenance programs and offerings](#).

Registering for Support

Access the CA Support [online registration site](#) to register for product support.

Accessing Technical Support

For your convenience, CA Technologies provides easy access to "One Stop" support for all editions of [CA ERwin Data Modeler](#), and includes the following:

- Online and telephone contact information for technical assistance and customer services
- Information about user communities and forums
- Product and documentation downloads
- CA Support policies and guidelines
- Other helpful resources appropriate for your product

For information about other Home Office, Small Business, and Enterprise CA Technologies products, visit <http://ca.com/support>.

Provide Feedback

If you have comments or questions about CA Technologies product documentation, you can send a message to techpubs@ca.com.

If you would like to provide feedback about CA Technologies product documentation, complete our short [customer survey](#), which is also available on the CA Support website, found at <http://ca.com/docs>.

CA ERwin Data Modeler News and Events

Visit www.erwin.com to get up-to-date news, announcements, and events. View video demos and read up on customer success stories and articles by industry experts.

Documentation Changes

The following updates have been made since the latest release (r9.2.0) of this document:

- **New Features and Enhancements**—This chapter describes the new features, enhancements, and changes implemented for release r9.5.0.
- **Sample Model**—This topic describes the sample model that is included with the product.
- **Operating System Support**—This topic describes the operating systems supported by the product.
- **Issues Fixed in this Release**—This topic includes the list of issues that are fixed in release r9.5.0.

The following documentation updates have been made since the last release (r9.0) of this documentation:

- **New Features and Enhancements**—This chapter describes the new features, enhancements, and changes implemented for r9.2.0.
- **New Features and Enhancements**—This chapter describes the new features, enhancements, and changes implemented for r9.1.
- **Fixed Issues**—This chapter describes the issues that are fixed for r9.1.
- **Documentation Formats and Deliverables**—Updated to include the addition of role based guides in a new section in the bookshelf.

The following documentation updates have been made since the last release (r8.2) of this documentation:

- **New Features and Enhancements**—This chapter describes the new features, enhancements, and changes implemented for r9.
- [Operating System Support](#) (see page 28)—Added version clarifier.
- [System Requirements](#) (see page 28)—Added the requirements for Mart server and web server.
- **Documentation Formats and Deliverables**—Updated to include the addition of role based guides in a new section in the bookshelf.

Contents

Chapter 1: CA ERwin Data Modeler Editions 9

Community Edition.....	9
Standard Edition.....	12
Workgroup Edition.....	13
Navigator Edition.....	14
CA ERwin Data Modeler for Microsoft SQL Azure.....	14
Sample Model	16

Chapter 2: New Features and Enhancements 19

New Reporting Tool--Report Designer	19
Report Designer Features	22
Metadata Integration Bridges Updated	24
Teradata Support Enhancement	25

Chapter 3: System Information 27

Release Numbering Scheme in CA ERwin Data Modeler	27
Operating System Support	28
System Requirements	28
Administrative Privileges Required	30
Current User Installation	30
Supported Target Server Databases.....	31
CA ERwin Data Modeler Workgroup Edition Requirements	31
Administrator Server System Requirements.....	31
DBMS Requirements	32
Client Workstation Requirements.....	33
CA ERwin Data Modeler Navigator Edition Requirements.....	33
Support for CA ERwin Data Modeler Workgroup Edition	33

Chapter 4: Installation Considerations for CA ERwin Data Modeler Workgroup Edition 35

Microsoft SQL Server 2005 Permissions.....	35
Specify Use of Foreign Characters With Microsoft SQL Server 2005	36
Specify Use of Foreign Characters With Microsoft SQL Server 2000	36

Chapter 5: Installation Considerations for CA ERwin Data Modeler Navigator Edition	37
Silent Install	37
Chapter 6: General Considerations for Using CA ERwin Data Modeler Workgroup Edition	39
Model Conversion and Complete Compare Differences	39
Model Display in the Difference Reconciliation Dialog	39
Uninstalling CA ERwin Data Modeler Workgroup Edition	39
Chapter 7: General Considerations for Using CA ERwin Data Modeler Navigator Edition	41
Model Display in the Difference Reconciliation Dialog	41
Help Files	41
Chapter 8: Known Issues	43
SQL 1105 Error	43
API Functions not Working for Sybase Mart	43
Model and Version Name Limit on Oracle	44
Editing UDP Values in the Bulk Editor	44
CA ERwin Data Modeler and Crystal Reports Shell Installation	44
.Net Requirement	45
Upgrading CA ERwin Data Modeler on Windows Server 2003	45
Mart Reports Work with Crystal Reports Developer Edition	45
Statistics not Reverse Engineered from Teradata	45
Report on Glossary Words Includes Extra Characters	45
Updating Profile Description from Notepad	45
Unwanted Result Rows in Report	46
DSM Logical to SQL Server 2012	46
Report Designer Functions for a Large Model	46
Subject Area Picture Report not Generated	46
Incorrect UDP in UDP Report	47
Invalid Column Node for DB2 LUW Model in View Report	47
Chapter 9: Fixed Issues	49
Issues Fixed in this Release	50

Chapter 10: Documentation	51
Documentation Formats and Deliverables.....	51
Technical Documentation Series.....	53
Release Numbers	53
Chapter 11: New Feature Guided Tours	55
Objective of Guided Tours.....	55
Use Case 1	56
Use Case 2	57
Use Case 3	58
Use Case 4	59
Appendix A: Appendix	61
Appendix B: Third Party Software Acknowledgment	63

Chapter 1: CA ERwin Data Modeler Editions

The following editions of CA ERwin Data Modeler are available:

Community Edition

[Standard Edition](#) (see page 12)

Workgroup Edition

[Navigator Edition](#) (see page 14)

[CA ERwin Data Modeler for Microsoft SQL Azure](#) (see page 14)

This *Release Notes* details new features, enhancements, updates, and known issues for all editions of CA ERwin Data Modeler.

Note: Depending on the edition of CA ERwin Data Modeler you are using, not all features may be enabled for use. For more information about the differences between versions, click one of the Edition links.

Community Edition

The Community Edition includes a limited number of features from the main product. It is designed to help Data Architects learn data modeling techniques, create simple data models, and learn about the design and maintenance of a production database.

Most of the basic features are available, with limited access to the following features:

25 Entities/Tables Per Model

You can reverse-engineer, import using Metadata Integration (MITI) bridges, or create up to 25 entities/tables per model. There is no restriction on the number of views you can create.

If you attempt to reverse engineer a script or a database with more than 25 tables, or attempt to open a model with more than 25 tables, a warning message displays. For Oracle and SQL Server, the reverse engineer process stops after creating 25 tables in the new model. For other databases, a warning message displays, stating that the import feature is disabled.

Note: Some operations that include the creation of temporary tables may also result in exceeding the allowed table limit. For example, if you reverse engineer a DB2/LUW script that contains 25 tables and a materialized view, the temporary table used to create the materialized view will cause you to exceed the allowed table limit for the model.

Read-Only Complete Compare

You can use Complete Compare features to evaluate and compare models, but you cannot commit changes you make in the Complete Compare wizard to the models you compare. The "Finish" button is disabled in the Resolve Differences dialog. In addition, demand loading of databases and Alter Script generation are not supported.

Note: If you are working with a database as part of the compare process, only the first 25 tables are reverse engineered to the model used during the compare. This may result in problems in the Complete Compare Resolve Differences dialog, where objects and properties between the models will not match. To avoid problems, work with a database that has fewer than 25 tables.

Reports

You can use the new reporting tool, Report Designer to generate and view reports. You can export reports to HTML, but not to TEXT. In addition, you cannot copy data that is displayed on the result grid.

Save As

You can save your models in the native *.erwin format or as a template (*.erwin_tmpl). Save As XML, ER1, and ERT is not supported.

File Open

You can open a model in *.erwin or *.erwin_tmpl format, and a SQL DDL file in the format *.sql, *.ers, or *.ddl.

Print a Model

Support for printing models is included in the Community Edition, although the output includes a watermark.

Working with Transformations in the Community Edition

You can work with transformations in the Community Edition to implement design decisions, such as partitioning tables. However, because of the limitation to 25 entities/tables per model, some transformation operations may not be possible. For example, if you are near the limit of 25 tables and choose to partition a table, you may surpass the table limit, and the transformation operation will not complete.

The Advisories Pane on the main workplace window reports a message reminding you that the intended action did not complete because of the object creation limit.

Limited Database Support

Support is included for modeling using the following databases:

- Oracle (10.x/11.x)
- SQL Server (2005/2008/2012)
- DB2 LUW (9.1, 9.5, and 9.7)

- MySQL (5.x, using ODBC)
- ODBC (2.0, 3.0)
- Sybase (12.5/15)

Limited Access to Metadata Integration (MITI) Bridges

Support is limited to the following Metadata Integration (MITI) Bridges for import. Export using Metadata Integration (MITI) Bridges is not supported.

- Sybase PowerDesigner OOM 9.x to 15.x (using UML XMI)
- Sybase PowerDesigner CDM 6.x
- Sybase PowerDesigner CDM 7.5 to 15.x
- Sybase PowerDesigner PDM 6.1.x
- Sybase PowerDesigner 7.5 to 15.x
- Embarcadero ER/Studio
- Embarcadero ER/Studio (using DM1)
- OMG/CWM 1.x XMI 1.x
- OMG/UML 1.x XMI 1.x

Note: If the file you import has more than 25 tables, the Community Edition imports only the first 25 tables.

Other limitations of the Community Edition include the following:

- A copy of Crystal Reports 2008 is not included with the Community Edition.
- Features supporting the creation and implementation of data type standards are not enabled.
- Access to the CA ERwin Data Modeler Workgroup Edition is disabled. When working with Complete Compare, the option to compare your model with a model in a Mart is disabled.
- The Community Edition license is valid for one year. After one year you can reinstall the Community Edition with a new license, or purchase and install a full version of the product. You can install and use the Community Edition without entering a license key for 30 days from the date you installed the product.

Documentation

The Community Edition includes online help files and PDF guides available on the ERwin Bookshelf, which is accessible from the Start menu.

To view PDF files, you must download and install the Adobe Reader from the Adobe website if it is not already installed on your computer.

Standard Edition

CA ERwin Data Modeler Standard Edition provides all the data modeling features used by Data Architects, Data Administrators, and Application Administrators, but does not include any workgroup modeling capabilities. You can use this edition as a standalone modeling tool, and as a Workgroup Edition client that can access and work with data models stored in a mart. When you enable data movement or dimensional modeling features, it provides a tool for assisting Data Administrators and Capacity Managers design data warehouses. Partners can use the API to create add-on solutions to CA ERwin Data Modeler. With the optional SQL Azure extension, you can take advantage of using SQL Azure as a target database.

Workgroup Edition

CA ERwin Data Modeler Workgroup Edition provides all the data modeling features used by Data Architects and also includes workgroup modeling capabilities used by Database Administrators, Application Administrators, and Application Owners. It provides conflict resolution, versioning, security and standardization for multi-user modeling. Workgroup modeling operates in a client/server environment so processing is shared between the user client workstation and the server where the models are stored. Users access the stored models through a client, such as CA ERwin Data Modeler. Models are held in a platform and network independent database or mart that resides on a central server, using Microsoft SQL Server, Oracle, or Sybase as the host database. With the optional SQL Azure extension, you can take advantage of using SQL Azure as a target database.

The key features of CA ERwin Data Modeler Workgroup Edition include:

Web-based administrator (CA ERwin Mart Administrator)

Helps the administrator administer the Mart. The administrator creates the Mart database, installs and configures CA ERwin Mart Administrator before users can connect to the Mart. CA ERwin Mart Administrator is hosted on a web server and is accessed through an Internet browser.

Model change impact analysis

Provides a change summary showing the impact of changes and the history of the affected model objects, allowing you to select which changes to apply to the model repository.

Version management

Lets Data Architects store, access and analyze the history of a model and the changes made to it, lock down specific versions, run difference reports between versions, and seamlessly roll back models to previous states as required.

Concurrent model access with optional model locking

Allows multiple users to concurrently work on a given model without compromising the integration and integrity of their parallel efforts.

The administrator installs the program and initializes the database on the DBMS server. The administrator also has the responsibility of setting up the library structure in which models are organized, and assigning security profiles to users. Administration overhead is relatively low and proportional to the number and activity level of the users. After a model is saved to the database, control of who can work on the model and how changes are saved to the model is handled by security, making it possible for workgroups to work on large models without confusion. CA ERwin Data Modeler Workgroup Edition supports many security and administrative features related to its multiuser capabilities and the client/server environment in which it operates. For this reason, routine management is usually performed by a dedicated administrator. Administrators can find detailed information regarding their tasks and responsibilities in the CA ERwin Data Modeler Workgroup Edition *Administration Guide*.

You can also use CA ERwin Data Modeler Navigator Edition as a client. Read-only access is permitted to data models, so your workgroup can use this client to share information with others without the risk that unauthorized changes might be saved to the mart.

Navigator Edition

CA ERwin Data Modeler Navigator Edition provides a cost-effective way to provide read-only access to models built with CA ERwin Data Modeler for viewing and analysis. This edition does not permit you to make any changes to models.

The key features of CA ERwin Data Modeler Navigator Edition include:

Read-only access

Read-only access is provided to models created by CA ERwin Data Modeler and it can also be used as a Workgroup Edition client for viewing a data model stored in a mart. Use the Navigator Edition to easily share model information without the risk of unauthorized changes to a model.

Navigation and Viewing

Provides those who need to view models, but not update them, full navigation and viewing of data models.

Reporting and Publication

Offers reporting and printing capabilities that generate in a variety of formats, including HTML and PDF.

CA ERwin Data Modeler for Microsoft SQL Azure

If you plan to use SQL Azure as your target server with CA ERwin Data Modeler, verify that your SQL Azure license is present either on the computer on which you plan to run CA ERwin Data Modeler, or on the License Server. This means, if you are using a local CA ERwin DM license, then you must have the license for SQL Azure locally. If you are using a License Server to get the CA ERwin DM license, then you must have the license for SQL Azure on the License Server. If you do not have a SQL Azure license, you cannot select SQL Azure as a target server. This requirement is effective for all editions of CA ERwin Data Modeler, including Community Edition.

The following tables compare the differences in CA ERwin Data Modeler functionality depending on whether you are using the SQL Azure extension:

Community Edition with SQL Azure Extension
Limited database support, however SQL Azure is available as a target server for new models and deriving models
SQL Azure models can be opened directly

Community Edition with SQL Azure Extension
Opening a file in XML format is supported
Alter Script in Forward Engineering is enabled only for SQL Azure models
No entity/table volume limitation for SQL Azure models only
Notes: <ul style="list-style-type: none"> ■ You can reverse engineer from any of the supported target server databases, but when the reverse engineer process finishes, switch to one of the available CE target server databases (DB2 for LUW, MySQL, ODBC/Generic, Oracle, SQL Azure, SQL Server, or Sybase). ■ If you attempt to reverse engineer more than 25 entities/tables, verify that your target server is SQL Azure. If it is not, then only the first 25 entities/tables are converted and the rest are removed.
On-demand loading and model saving during Complete Compare is enabled only for SQL Azure models
Printing a SQL Azure model is supported and the output does not contain a watermark
Data type standards are supported
Only SQL Azure models can be saved in any of the available formats
Access to marts (workgroup modeling) is not supported
Full use of all available MITI import and export bridges
Crystal Reports is supported

Standard Edition	Standard Edition with SQL Azure Extension
SQL Azure is not available as a target server for new models and deriving models	SQL Azure is available as a target server for new models and deriving models
Opening a SQL Azure model launches a dialog prompting you to select a different target server	SQL Azure models can be opened directly
SQL Azure is not an option in the CA ERwin Data Modeler Target Server dialog	SQL Azure is available for selection in the CA ERwin Data Modeler Target Server dialog

Workgroup Edition	Workgroup Edition with SQL Azure Extension
SQL Azure is not available as a target server for new models and deriving models	SQL Azure is available as a target server for new models and deriving models
Opening a SQL Azure model launches a dialog prompting you to select a different target server	SQL Azure models can be opened directly
SQL Azure is not an option in the CA ERwin Data Modeler Target Server dialog	SQL Azure is available for selection in the CA ERwin Data Modeler Target Server dialog
Mart access is disabled for SQL Azure models	Mart access is enabled for SQL Azure models

Sample Model

When you install CA ERwin Data Modeler, a sample model by name eMovies is installed. Use this model as an example to learn data modeling and to learn how to use the tool.

This model is available in the following folder:

<install folder>\ERwin Data Modeler r9\BackupFiles\Samples\Standard

Note: If you are using Microsoft Windows 7 or Windows 8, you must run the data modeling tool as an administrator to open the eMovies model.

The business requirements of this model are as follows:

- Manage employee details
- Manage store details
- Manage movie details
- Manage copies of movies
- Manage customer details
- Maintain movie rental details for customers
- Record payment details for rented movies
- Display the credit status of customers
- Generate invoices for customers
- Display overdue details for customers
- Search for customers
- Search for movies that are rented based on the rented date, customer phone number, employee number, or movie number

Apart from entities, attributes, and relationships, this model serves as an example for the following features:

- Domains
- Logical Model
- Subject Area
- Annotation
- Key Groups

- ER Diagrams
- Naming Standards Object
- Data Type Standards Object
- Themes
- Validation Rules

Chapter 2: New Features and Enhancements

This section provides the list of new features and enhancements for CA ERwin Data Modeler Release 9.5.

This section contains the following topics:

[New Reporting Tool--Report Designer](#) (see page 19)

[Metadata Integration Bridges Updated](#) (see page 24)

[Teradata Support Enhancement](#) (see page 25)

New Reporting Tool--Report Designer

A new reporting tool--Report Designer is included in this release. This tool lets you generate a wide variety of reports and on the current data available in your data models. You can create report templates for frequently used reports and you can save multiple reports under a Report Solution.

You can generate the following types of reports:

- Logical: This report includes the objects from a Logical only model
- Physical: This report includes the objects from a Physical only model
- Logical/Physical: This report includes the objects from a Logical/Physical model

Several sample reports are included with the application and they are available in the following location:

%Installdir%\ CA\ERwin Data Modeler r9\BackupFiles\Report Solutions

Also at the following location:

Windows XP

C:\Documents and Settings\All users\Application Data\CA\ERwin Data Modeler\9.5\Configuration\Report Solutions\

Windows 7

C:\ProgramData\CA\ERwin Data Modeler\9.5\Configuration\Report Solutions\

Note: The sample reports are created using a Logical-Physical model. If you use the sample reports with a Logical-only or a Physical-only model, it may result in inappropriate results.

Report Designer includes the *Filter By* option that lets you generate drill-down reports. Some of the drill-down reports that you can generate are as follows:

Entity/Table level reports

- Entities and tables in the current Subject Area
- Entities and tables that are selected in the current diagram

Attribute/Column level reports

- Migrated attributes and columns
- Owned attributes and columns
- Role-named attributes and columns
- Foreign (FK) Key groups and indexes
- Generated indexes
- Nonunique (IE) Key groups and indexes
- Primary (PK) Key groups and indexes
- Unique (AK) Key groups and indexes

Subject Area reports:

- All entities and tables in the current subject area
- Members of the current diagram
- Members of all the diagrams in the current Subject Area
- Members of all the diagrams in the Main Subject Area, that is, the members of all diagrams at the model level
- Members of the diagrams that are specified at run time

You can use the Graphical Member option for diagrams and can view the images of diagrams.

The filters for Entity/Table and Key Group/Index are available when you select the members of a diagram or a Subject Area.

Attributes and columns can be displayed the following order:

- Alphanumeric
- Attribute (the order in which attributes appear on the logical model)

- Column (the order in which columns appear on the physical model)
- Physical (the order in which columns appear in the DDL after Forward Engineering)
- Reverse Alphabetic

Note: For more information about generating reports using Report Designer, see the How to Generate or View Reports scenario. To access this scenario, open the ERwin Bookshelf, navigate to the Product Documentation - By User Role section, and then click Data Architect.

Report Designer Features

Report Designer includes the following features:

Report Explorer Features

Move child nodes: To move the child nodes up or down within a parent node, right-click the node and click Move Up or Move Down. This option is to move child nodes within a parent node and not to move parent nodes in a report.

Result Grid Features

- Drag-and-drop: To change the order of columns, drag-and-drop the report node to the desired position in the Report Explorer pane. Select the report template and click Run current report on the toolbar.
- Sort: To sort the report results on a specific column, click the column header. The default sort order is the order in which you have created the objects in the model.
- Hide a column: To hide a column, click the column header and drag it away from the report until you see the cross mark. To display a hidden column, right-click a column header, click Columns, and then select the column that you want to display.

Note: Hidden columns are included when you export a report to CSV or HTML.

- Group the report result by a column: To group the report result by a column, click the column header and drag it to the *Drag a column header here to group by that column* section. The following illustration shows a report that is grouped by two columns:

Column Physical_Name	Column Physical_...	Index Physical_N...
Filter by...	Filter by...	Filter by...
<div style="border: 1px solid red; padding: 2px;"> Type Table Physical_Name </div>		
<input type="checkbox"/> Type: Dependent		
<input type="checkbox"/> Table Physical_Name: MOVIE_COPY		
general_condition	varchar(20)	XPKMOVIE_COPY
movie_format	varchar(20)	XIF1MOVIE_COPY
movie_copy_number	integer	
movie_number	integer	
<input type="checkbox"/> Table Physical_Name: MOVIE_RENTAL_RECORD		
rental_date	datetime	XPKMOVIE_RENT...
due_date	datetime	XIF5MOVIE_RENT...
rental_status	varchar(20)	XIF4MOVIE_RENT...
overdue_charge	integer	XIF6MOVIE_RENT...
rental_rate	integer	XIF7MOVIE_RENT...
rental_record_date	datetime	XIF9MOVIE_RENT...
soc_sec_number	integer	
employee_phone	integer	

- Rename a column: To rename a column, right-click the corresponding node in the Report Explorer and click Properties. Enter a new name in the Node Name field and click OK. Select the report template and click Run current report on the toolbar.
- Configure the look and feel of each column: To configure the look and feel of each column, right-click the corresponding node in the Report Explorer and click Properties. Complete the fields in the Customize report style section. Be aware that the styles applied to a parent node are *not* applied to child nodes automatically.
- Clear grid: To clear the data displayed in the result grid, click View, Clear grid. Clearing the result grid is a best practice when exporting a large or a complex report to HTML.
- Export to HTML, CSV and TXT: To export a report or a Report Solution, right-click it and click Export to HTML or Export to CSV. When you export a report to CSV, select the delimiter as Comma Delimited to view the report in CSV format.

Metadata Integration Bridges Updated

CA ERwin Data Modeler has been updated to support Meta Integration® Model Bridge (MIMB) version 7.2.1 from Meta Integration® Technology, Inc. You can access the bridges when you click File, Import, From External Format or File, Export, To External Format.

The full list of supported import and export bridges is documented in the CA ERwin Data Modeler Implementation Guide. This guide is available on the ERwin Bookshelf, which is accessible from the Start menu.

Import Bridges Added/Removed

Support has been added for the following bridges:

- Import bridges for Apache Hadoop Hive Native include:
 - Apache Hadoop Hive
 - Apache Hadoop HCatalog
 - Cloudera Enterprise (Hadoop Hive)
 - Cloudera Impala (Hadoop Hive)
 - DataStax Enterprise (Hadoop Hive)
 - Hadapt Hadoop Hive
 - Hortonworks Hadoop Hive
 - MapR Hadoop Hive
- Google BigQuery
- SQL/HiveQL Script
- Sybase PowerDesigner LDM 15.x to 16.x
- Tableau Software v7 Server & Desktop

Support has been removed for the following bridges:

- IBM InfoSphere Metadata Workbench (Common Model)

The following bridges are renamed:

From	To
Import Bridge	
SAP BusinessObjects Information Design Tool (IDT) (Repository) - Beta bridge	SAP BusinessObjects Information Design Tool (IDT) (Repository)

From	To
SAP BusinessObjects Information Design Tool (IDT) (File) - Beta bridge	SAP BusinessObjects Information Design Tool (IDT) (File)
IBM Cognos BI Reporting - Framework Manager for ReportNet	IBM Cognos Framework Manager (FM) for ReportNet
IBM Cognos BI Reporting - Framework Manager	IBM Cognos Framework Manager (FM)
Export Bridge	
<ul style="list-style-type: none"> ■ IBM Cognos BI Reporting - Framework Manager for ReportNet 	IBM Cognos Framework Manager for ReportNet
IBM Cognos BI Reporting - Framework Manager	IBM Cognos Framework Manager

Teradata Support Enhancement

CA ERwin Data Modeler is now compatible with Teradata versions 13.1, 14, and 14.1. You can create data models and forward engineer the models to these databases; and you can reverse engineer these databases. However, new objects or properties that are added in these versions are not supported.

Chapter 3: System Information

Review the following system information before installing and using the product.

This section contains the following topics:

[Release Numbering Scheme in CA ERwin Data Modeler](#) (see page 27)

[Operating System Support](#) (see page 28)

[System Requirements](#) (see page 28)

[Administrative Privileges Required](#) (see page 30)

[Current User Installation](#) (see page 30)

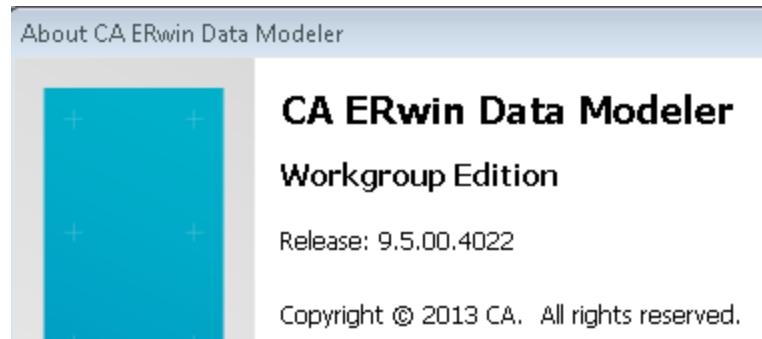
[Supported Target Server Databases](#) (see page 31)

[CA ERwin Data Modeler Workgroup Edition Requirements](#) (see page 31)

[CA ERwin Data Modeler Navigator Edition Requirements](#) (see page 33)

Release Numbering Scheme in CA ERwin Data Modeler

Effective with r8, the release of this product is displayed in the *About CA ERwin Data Modeler* dialog using the following release numbering scheme:



The first number always indicates the main (GA) release, the second number indicates the service pack number of the main release, the third number indicates the patch number of the main release or service pack (or both), and the fourth number indicates the build number of the product. For example, the preceding illustration indicates that the product level is r9, Build 4022. A release of 9.5.2.1500 in this dialog would indicate r9 Service Pack 5, Patch Release 2, Build 1500.

If any documentation is updated after a main release, the cover page of the documentation always includes an edition number to indicate the release for which it was updated (see [Release Numbers](#) (see page 53) for more information).

Operating System Support

CA ERwin Data Modeler requires that you have the 32-bit version of one of the following operating systems installed:

- Microsoft Windows Vista
- Microsoft Windows Server 2008 SP2
- Microsoft Windows Server 2003 SP2
- Microsoft Windows XP SP3
- Microsoft Windows 7
- Microsoft Windows 8

Note: CA ERwin Data Modeler has only been certified on the 32-bit versions of the Windows operating systems described in the preceding list. CA ERwin Data Modeler is a 32-bit application, so you may experience problems running this application on a 64-bit operating system.

System Requirements

You can use any of the following combinations to install CA ERwin Data Modeler, the Mart database, and the MartServer application:

- Install CA ERwin Data Modeler, the Mart database, and the MartServer application on the same computer.
- Install CA ERwin Data Modeler, the Mart database, and the MartServer application on different computers.
- Install CA ERwin Data Modeler and the Mart database on one computer, and install the MartServer application on a different computer.
- Install CA ERwin Data Modeler on one computer, and install the Mart database and the MartServer application on a different computer.

Help ensure that you always install the MartServer application on the Windows operating system.

This topic includes the system requirements for the computers on which you plan to install CA ERwin Data Modeler, the Mart database, and the MartServer application.

The following requirements must be met or exceeded for CA ERwin Data Modeler to install and run correctly:

- Microsoft-based workstation, Intel Dual Core processor or equivalent
- 2 GB available hard drive space
- 2 GB RAM minimum; more is recommended for large models
- DVD-readable device (only if installing from DVD media)

Note: The minimum screen resolution supported is 1024 x 768. If your screen resolution is less than the minimum supported, some portions of the screen will not be visible.

The following requirements must be met or exceeded for the computer on which you install the MartServer application:

Hardware requirements (based on physical hardware performance, not a virtual environment):

- 2 GHZ or higher dual core processor
- 4 GB RAM (8 GB or more for large marts)
- 4 GB of disk space or more as required to support your specific mart

Operating system requirements:

- Microsoft Windows Vista
- Microsoft Windows Server 2008 SP2
- Microsoft Windows Server 2003 SP2
- Microsoft Windows XP SP3
- Microsoft Windows 7
- Microsoft Windows 8
 - **Note:** CA ERwin Data Modeler has only been certified on the 32-bit versions of the Windows operating systems described in the preceding list. CA ERwin Data Modeler is a 32-bit application, so you may experience problems running this application on a 64-bit operating system.

Database:

The Mart Server can use a “standalone” or share an existing database server:

- Microsoft SQL Server 2005, 2008, or 2012
- Oracle 10g or 11g
- Sybase Adaptive Server 15.0 through 15.7

The CA ERwin Mart Administrator web client meets the following requirements:

- Supported browsers:
 - Microsoft Internet Explorer 8[®] or newer
 - Mozilla Firefox[®] v.9.0 or newer
 - Google Chrome 14 or newer
 - Apple Safari 5 or newer
- Adobe Flash plug-in version 8 or newer for the respective browser

Administrative Privileges Required

Because the installation process for CA ERwin Data Modeler writes to the registry and system folders, the person installing, upgrading, or removing CA ERwin Data Modeler must have Administrative privileges. If you run an install without Administrative privileges, all files may not be installed or upgraded, and users can encounter problems when running the software.

Current User Installation

In the CA ERwin Data Modeler release 8.0, when you installed CA ERwin Data Modeler, only the user who installed the software could use it. Beginning with r8.2, the license mechanism is changed to *per machine* instead of *per user*. When you install CA ERwin Data Modeler, anyone using the computer can use it. In addition, if a valid license is available, multiple users can use CA ERwin Data Modeler simultaneously on a computer.

Because of this change, the license files are now available in the following locations:

Windows XP

C:\Documents and Settings\All Users\Application Data\CA\ERwin Data Modeler\

Windows 7

C:\ProgramData\CA\ERwin Data Modeler\

C:\Users\ALL Users\Application Data\CA\ERwin Data Modeler\

Supported Target Server Databases

The following target server databases are supported in the current release:

- DB2 for i (5.x/6.x)
- DB2/LUW (9.1, 9.5, 9.7)
- DB2/zOS (8.1, 9.1)
- Informix (9.x/10.x/11.x)
- MySQL (5.x/6.x)
- ODBC/Generic (2.0, 3.0)
- Oracle (10x/11x)
- Progress (9.x/10.x)
- SAS (stabilized support)
- SQL Azure (using the SQL Azure Extension)
- SQL Server (2000, 2005, 2008, 2012)
- Sybase Adaptive Server (12.5/15)
- Sybase IQ (12.x)
- Teradata (2.6, 12, 13, 13.10, 14, 14.1)

CA ERwin Data Modeler Workgroup Edition Requirements

If you plan to use CA ERwin Data Modeler Workgroup Edition, review the following requirements to ensure your workgroup environment is set up properly.

Administrator Server System Requirements

The disk space required for the administrative files used to create and manage the database is separate from the disk space required to accommodate models on the server where the database is located. Greater CPU speed, and more RAM and disk space result in better performance.

DBMS Requirements

Before you install CA ERwin Data Modeler to use in a workgroup environment, ensure that you are using a supported DBMS as your host server. This release supports the following host DBMSs:

- Oracle 10g and 11g
- Microsoft SQL Server 2000, 2005, 2008, and 2012
- Sybase 15.x

To create, update, or delete a mart in CA ERwin Data Modeler Workgroup Edition, you must have the following database rights:

- For Microsoft SQL Server 2005, 2008, and 2012 you must be the database owner (dbo).

Notes:

- The dbo is no longer required to have the sysadmin role.
- The SQL Server 2005, 2008, and 2012 TRUSTWORTHY database property is no longer required for the mart. After you install this product, you can optionally reset this property to OFF.
- For Oracle, you must be the database schema owner and have the DBA role.

Before you install Mart on the server, verify that the DBMS environment is prepared for the installation, and that the server system requirements meet at least the minimum specifications. At least one user with administrative privileges is available on the DBMS.

Note: The dbo role for Microsoft SQL Server or Sybase is necessary only during the installation or upgrade. You can strip the installer of the dbo role after the installation or upgrade is complete.

For more information about preparing the DBMS environment, see the CA ERwin Data Modeler Workgroup Edition *Implementation Guide*.

Client Workstation Requirements

You must install CA ERwin Data Modeler on each client workstation that needs to access models in the mart, and each client workstation must have access to the DBMS on which the mart is located. It is recommended that client workstations have at least 2 GB of RAM.

You can install CA ERwin Data Modeler Navigator Edition as a client for CA ERwin Data Modeler Workgroup Edition.

Note: In a workgroup environment, CA ERwin Data Modeler users can only connect to a mart initialized with the same serial number identifier that the user has licensed on their local machine.

CA ERwin Data Modeler Navigator Edition Requirements

If you plan to use CA ERwin Data Modeler Navigator Edition, review the following requirements to ensure your environment is set up properly.

Support for CA ERwin Data Modeler Workgroup Edition

CA ERwin Data Modeler Navigator Edition is enabled for use with a mart-enabled version of CA ERwin Data Modeler (Workgroup Edition). Consult with your mart administrator for a GUEST user permission to access models in CA ERwin Data Modeler Workgroup Edition.

You must use a supported DBMS. This release supports the following host DBMSs:

- Oracle 10g and 11g
- Microsoft SQL Server 2000, 2005, 2008, and 2012
- Sybase 15.x

Chapter 4: Installation Considerations for CA ERwin Data Modeler Workgroup Edition

Review the following installation considerations before installing the product. For more information about the installation process for a workgroup environment, see the CA ERwin Data Modeler Workgroup Edition *Implementation Guide*.

This section contains the following topics:

[Microsoft SQL Server 2005 Permissions](#) (see page 35)

[Specify Use of Foreign Characters With Microsoft SQL Server 2005](#) (see page 36)

[Specify Use of Foreign Characters With Microsoft SQL Server 2000](#) (see page 36)

Microsoft SQL Server 2005 Permissions

For SQL Server 2000, you only need to have *public* assigned to save to the mart. However, when the repository is on a SQL Server 2005 instance, you need to have the *bulkadmin* permission designated as well. The ability to do bulk inserts (which was permitted by public, previously) is no longer part of the public permission. You must explicitly define this permission or when you attempt to save a model to a new mart instance created using a SQL Server 2005 database, an error "You do not have permission to use the bulk load statement." is returned.

Specify Use of Foreign Characters With Microsoft SQL Server 2005

For Microsoft SQL Server 2005 and 2008, modify your registry settings to have certain foreign language characters in your models recognized.

Follow these steps:

1. Click Run on the Start menu.
2. Enter *regedit*.

The Registry Editor opens.

3. Verify or add the following registry entry:

[HKEY_LOCAL_MACHINE\SOFTWARE\Microsoft\MSSQLServer\Client\DB-Lib]

"AutoAnsiToOem"="ON"

"UseIntlSettings"="ON"

4. Click File, Exit.

Your configuration is set to recognize foreign language characters in your models.

Specify Use of Foreign Characters With Microsoft SQL Server 2000

For Microsoft SQL Server 2000, select specific settings in the Client Network Utility to have certain foreign language characters in your models recognized.

Follow these steps:

1. Click Programs, Microsoft SQL Server, Client Network Utility on the Start menu.

The SQL Server Client Network Utility dialog opens.

2. Select the following check boxes on the DB-Library Options tab:

■ Automatic ANSI to OEM conversion

■ Use international settings

3. Click OK.

Your configuration is set to recognize foreign language characters in your models.

Chapter 5: Installation Considerations for CA ERwin Data Modeler Navigator Edition

Review the following installation considerations before installing the product. See the CA ERwin Data Modeler Navigator Edition *User Guide* for more information about the installation process.

Silent Install

This product does not provide an unattended or silent install.

Chapter 6: General Considerations for Using CA ERwin Data Modeler Workgroup Edition

The following sections contain general information you should know before using CA ERwin Data Modeler in a workgroup environment.

This section contains the following topics:

[Model Conversion and Complete Compare Differences](#) (see page 39)

[Model Display in the Difference Reconciliation Dialog](#) (see page 39)

[Uninstalling CA ERwin Data Modeler Workgroup Edition](#) (see page 39)

Model Conversion and Complete Compare Differences

Unlike previous conversions to new releases, starting with r8, it is no longer valid to do a round-trip through another version of the product and use Complete Compare to compare the differences between the models. Due to the new changes and features in r8, the models will be different; use reports to detect and work with model differences.

Model Display in the Difference Reconciliation Dialog

In a workgroup modeling environment, two users may check out and make changes to the same model. The first user may make changes to the model and save the changes to the mart. When the second modeler makes changes and saves them to the mart, the Difference Reconciliation dialog is displayed. You use features in this dialog to view the differences on the object level, the more detailed property level, or search the text of the comparison lists.

Note: In the Difference Reconciliation dialog, the model in the left pane is the current model that you are checking in to the mart. The model in the right pane is the version of the model already in the mart.

Uninstalling CA ERwin Data Modeler Workgroup Edition

You can use the Windows uninstall utility to uninstall CA ERwin Data Modeler. However, when you uninstall CA ERwin Data Modeler in a workgroup environment, the mart database remains intact. To remove the database from your computer, delete the mart database first, and then uninstall CA ERwin Data Modeler.

Chapter 7: General Considerations for Using CA ERwin Data Modeler Navigator Edition

The following sections contain general information you should know before using CA ERwin Data Modeler Navigator Edition.

Model Display in the Difference Reconciliation Dialog

In a workgroup modeling environment, two users may check out and make changes to the same model. The first user may make changes to the model and save the changes to the mart. When the second modeler makes changes and saves them to the mart, the Difference Reconciliation dialog is displayed. You use features in this dialog to view the differences on the object level, the more detailed property level, or search the text of the comparison lists.

Note: In the Difference Reconciliation dialog, the model in the left pane is the current model that you are checking in to the mart. The model in the right pane is the version of the model already in the mart.

Help Files

The context sensitive online help in CA ERwin Data Modeler Navigator Edition is identical to the online help in CA ERwin Data Modeler. This means that the online help may discuss capabilities such as saving a model that is not possible in the CA ERwin Data Modeler Navigator Edition product.

Chapter 8: Known Issues

This section contains the known issues that you should review before using the application.

This section contains the following topics:

- [SQL 1105 Error](#) (see page 43)
- [API Functions not Working for Sybase Mart](#) (see page 43)
- [Model and Version Name Limit on Oracle](#) (see page 44)
- [Editing UDP Values in the Bulk Editor](#) (see page 44)
- [CA ERwin Data Modeler and Crystal Reports Shell Installation](#) (see page 44)
- [.Net Requirement](#) (see page 45)
- [Upgrading CA ERwin Data Modeler on Windows Server 2003](#) (see page 45)
- [Mart Reports Work with Crystal Reports Developer Edition](#) (see page 45)
- [Statistics not Reverse Engineered from Teradata](#) (see page 45)
- [Report on Glossary Words Includes Extra Characters](#) (see page 45)
- [Updating Profile Description from Notepad](#) (see page 45)
- [Unwanted Result Rows in Report](#) (see page 46)
- [DSM Logical to SQL Server 2012](#) (see page 46)
- [Report Designer Functions for a Large Model](#) (see page 46)
- [Subject Area Picture Report not Generated](#) (see page 46)
- [Incorrect UDP in UDP Report](#) (see page 47)
- [Invalid Column Node for DB2 LUW Model in View Report](#) (see page 47)

SQL 1105 Error

When you are upgrading to the current release on Microsoft SQL Server in a workgroup environment, during the mart conversion process, you may get the message "Sql 1105" if you run out of free hard disk space during the process.

Stop the conversion process, and either free or add hard disk space. Delete the already created r9 tables and then re-attempt the conversion.

API Functions not Working for Sybase Mart

When Sybase is used as the Mart database and the Mart is accessed through API, the LocateMartDirectory and LocateMartDirectoryUnit functions do not work properly.

Model and Version Name Limit on Oracle

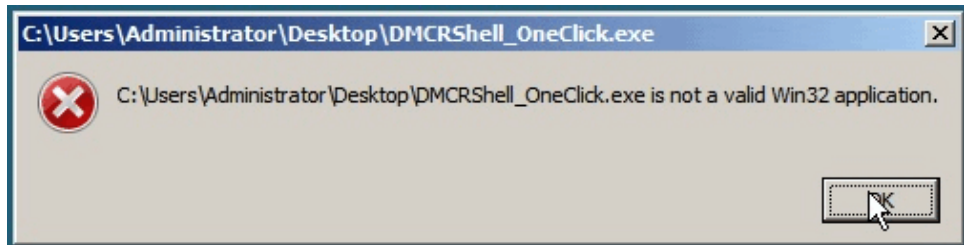
In a workgroup environment, when you save a model to an Oracle mart, the model name must be less than 130 characters. If you exceed the 130 character limit, the model will not save. Because the version name is derived from the model name (for example, <ModelName>:<version number> by <UserName> on <VersionCreateDate>), you should use model names considerably less than 130 characters in length to avoid problems with saving a model version.

Editing UDP Values in the Bulk Editor

You can only edit the UDP values of UDPs that use either the *String* or *Number* data type in the Bulk Editor. Bulk editing of UDP values that use either the *Date* or *List* data type is not currently supported. Editing of UDP values for UDPs that use *Date* or *List* is only supported using the *User Defined Properties - Logical* or *User Defined Properties - Physical* dialogs. These dialogs are accessed by selecting User Defined Properties from the Model menu.

CA ERwin Data Modeler and Crystal Reports Shell Installation

If the operating system of the machine on which you want to install CA ERwin Data Modeler version 9.0 through 9.2 and Crystal Reports is either Microsoft Windows Server 2008 or Microsoft Windows Server 2008 SP1, you may encounter the following error:



If you receive this error, the installation will not continue. You can perform one of the following to resolve this problem:

- Upgrade to Microsoft Windows Server 2008 SP2.
- Install CA ERwin Data Modeler version 9.0 through 9.2 and Crystal Reports Shell separately by downloading each application's individual installation program.
- Install CA ERwin Data Modeler version 9.0 through 9.2 and then run the Crystal Reports installation from the install wizard.

.Net Requirement

The current release requires .NET 3.5 to be installed on your system. If you do not have it installed, the CA ERwin Data Modeler installation will attempt to install it.

Upgrading CA ERwin Data Modeler on Windows Server 2003

While upgrading the current release of the product on the Windows Server 2003 platform, you may receive a digital signature policy error. This is an operating system error that can be resolved by applying the update for Windows Server 2003 ([KB925336](#)) from Microsoft.

Mart Reports Work with Crystal Reports Developer Edition

You can generate Mart reports only if you have installed Crystal Reports Developer Edition on the computer from which you want to generate the reports.

Statistics not Reverse Engineered from Teradata

Suppose a Teradata 14 or 14.1 database includes a table with the COLLECT STATISTICS option and the database is reverse engineered. The statistics are not populated in the reverse engineered model.

Report on Glossary Words Includes Extra Characters

Suppose a report is generated on a model that includes an NSM object. If the glossary words are included in the report, extra characters appear for all glossary words.

Updating Profile Description from Notepad

In the CA ERwin Mart Administrator Profile Management page, suppose the description is copied and pasted from a Notepad file and is saved. The updated description displays syntax (\n) as well.

Unwanted Result Rows in Report

In a Subject Area report, suppose the Subject Area name is included in the report and the diagram name is specified at run time. The report lists all Subject Areas instead of the Subject Area that corresponds to the selected diagram.

DSM Logical to SQL Server 2012

Suppose a Logical/Physical SQL Server 2012 model is attached with a DSM object that is active. Suppose a new Logical Definition for the Number domain is created and mapped to SQL Server 2012 and Date is selected for domain. If the newly created Logical Definition is applied to a column in a model, and if the physical view is seen, the data type is still displayed as Number.

Report Designer Functions for a Large Model

Generating reports is a memory intensive process and when the data set is very large, the process uses the maximum memory. When the maximum memory is consumed, a warning message informs you that the application might stop responding if you continue processing the report. If you choose to continue to run the report and the memory is completely used, the program might stop responding. If you choose not to continue, the report execution is terminated.

To resolve this problem, you can generate multiple small reports with fewer properties.

Subject Area Picture Report not Generated

There is a limitation on the size of a diagram report that you can generate--the maximum size is 1900 x 1440. Suppose you create a Subject Area report for a large model using Report Designer, and export the report to HTML. If you click the diagram in the HTML report, it does not open.

To resolve this problem, reduce the zoom level of the model to reduce the picture size and then generate the report.

Incorrect UDP in UDP Report

Suppose you want to generate a report on the UDPs using Report Designer. Suppose you have already created a UDP report template and generated the report for a different model. If you close the model, open another model, and use the same template to generate the UDP report, then the report includes the UDP name from the previous model. In the result grid, the column heading shows the UDP name of the previous model, while the UDP value is of the current model. In addition, the properties of the Report Explorer also shows the UDP name of the previous model. However, the Report Properties dialog shows the correct UDP name.

Invalid Column Node for DB2 LUW Model in View Report

In a DB2 LUW model, suppose a nickname table and a view exist and a Column Option level UDP is added to a column. If a View report is generated using the Report Designer, the Column Option node is available for View. If a user selects the Column Option node, the UDP is not included in the report for the selected column.

Chapter 9: Fixed Issues

This section includes the list of issues that is fixed.

This section contains the following topics:

[Issues Fixed in this Release](#) (see page 50)

Issues Fixed in this Release

The following issues are fixed in this release:

Problem No.: 12044 Issue No.: 21115035-1 SYNTAX ISSUE

The following code worked for entities:

```
//*****  
  
    SPItemBegin = Entity  
        Property("Name_Qualifier") "." Property("Name")  
  
    SPItemEnd
```

But, the following code, which is similar to the previous code did not work for views:

```
//*****  
  
    SPItemBegin = View  
        Property("Name_Qualifier") "." Property("Name")  
  
    SPItemEnd
```

Problem No.: 12468 Issue No.: 21414055-1 ENCOUNTERED PROBLEM AT INSTALL

When CA ERwin Data Modeler release 9.0 was installed on a Windows 7 32-bit computer, the following error message appeared:

InstallShield DLL Custom Action

The DLL being called encountered a problem.

Chapter 10: Documentation

This section contains information about current product documentation.

This section contains the following topics:

[Documentation Formats and Deliverables](#) (see page 51)

[Technical Documentation Series](#) (see page 53)

[Release Numbers](#) (see page 53)

Documentation Formats and Deliverables

The Bookshelf provided with CA ERwin Data Modeler, which is installed by default, includes documentation for CA ERwin Data Modeler Navigator Edition. You can open the Bookshelf in a web browser from the CA ERwin Data Modeler Start menu.

The documentation provided on the Bookshelf includes the following guides:

Deliverable Name	Format Provided
Add-In Manager Online Help	HTML
API Reference Guide	HTML and PDF
Data Modeling Overview Guide (This guide was earlier known as Methods Guide.)	HTML and PDF
Editing Forward Engineering Templates	HTML and PDF
Implementation Guide	HTML and PDF
Implementation and Administration Guide (Workgroup Edition) (The individual Administration and Implementation guides are merged to create one guide--Implementation and Administration Guide.)	HTML and PDF
Installation Guide	HTML and PDF
Metamodel Reference	HTML
CA ERwin Data Modeler Online Help	HTML
CA ERwin Mart Administrator Online Help	HTML
Release Notes	HTML and PDF

Deliverable Name	Format Provided
Template Language and Macro Reference	PDF
Upgrade Wizard Help	HTML
User Guide (Navigator Edition)	HTML and PDF

Note: For more information about the CA ERwin Data Modeler editions, see [CA ERwin Data Modeler Editions](#) (see page 9).

The bookshelf includes a new section named Roles. This section includes documentation relevant to the tasks performed by each role in HTML format. The Roles section includes the following documentation:

Role	Deliverable Name
Business Analyst	Applying a theme to a model
Business Analyst	Changing the description of multiple objects
Data Architect	Applying data type standards
Data Architect	Applying naming standards
Data Architect	Creating a model
Data Architect	Generating or viewing reports
Data Architect	Compare models using Complete Compare
Data Architect	Create a Database Schema
Data Architect	How to Reverse Engineer a Database or a Script
System Administrator	Upgrading Mart
System Administrator	Setting up concurrent licenses
System Administrator	Using a local license
System Administrator	Using concurrent licenses
System Administrator	Adding users
System Administrator	Installing and configuring Mart

Technical Documentation Series

The Template Language and Macro Reference (*Template Lang and Macro Ref.PDF*) technical document is provided on the Bookshelf and can also be accessed from the Tech Docs menu item on the CA ERwin Data Modeler Start menu.

The CA ERwin Data Modeler metamodel reference and overview technical documents are provided on the CA ERwin Data Modeler Metamodel Reference Bookshelf. This Bookshelf is accessible from the Tech Docs menu item on the CA ERwin Data Modeler Start menu. It contains an overview of the metamodel (*ERwin Metamodel Overview.PDF*) and the metamodel object and property descriptions are provided in HTML format (*Metamodel Reference*).

To view PDF files, you must download and install the Adobe Reader from the Adobe website if it is not already installed on your computer.

Release Numbers

The release number on the title page of a document might not correspond to the current product release number; however, all documentation delivered with the product, regardless of release number on the title page, will support your use of the current product release. The release number changes only when a significant portion of a document changes to support a new or updated product release. For example, a document for r8 may still be valid for r8.1. Documentation bookshelves always reflect the current product release number.

Occasionally, we must update documentation outside of a new or updated release. To indicate a minor change to the documentation that does not invalidate it for any releases that it supports, we update the edition number on the cover page. First editions do not have an edition number.

Chapter 11: New Feature Guided Tours

Review the following guided tours to become more familiar with the new features of this release.

This section contains the following topics:

[Objective of Guided Tours](#) (see page 55)

[Use Case 1](#) (see page 56)

[Use Case 2](#) (see page 57)

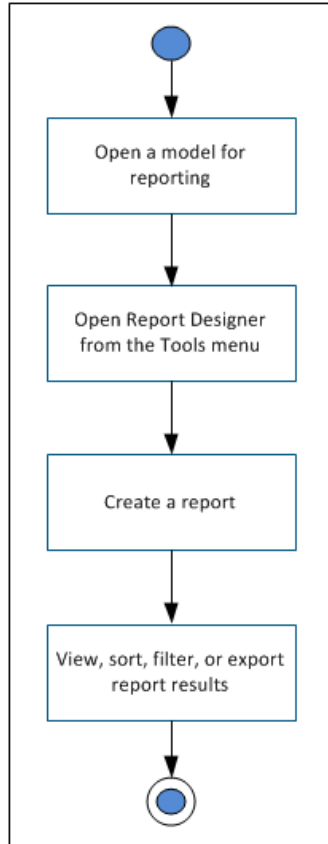
[Use Case 3](#) (see page 58)

[Use Case 4](#) (see page 59)

Objective of Guided Tours

The objective of the Guided Tours section is to introduce the basic functions of CA ERwin Report Designer to users. This section contains four use cases that demonstrate the behavior of report template designer, report explorer, report results grid, and basic HTML export.

In general, all the use cases have the following steps:



Use Case 1

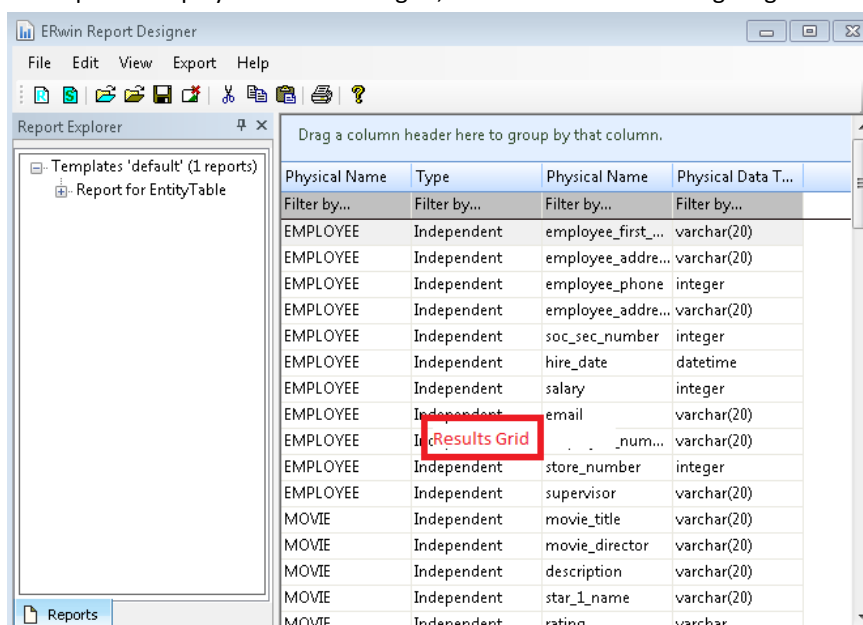
Description: Design a basic report with the logical and physical names of entities and then view the results in the Report Designer results grid.

Follow these steps:

1. Open a model for reporting.
2. Click Tools, Report Designer.
3. Click Create a report on the toolbar. The Report Editor dialog appears.
4. Enter a name for the report.
5. Select Logical/Physical as the report type.
6. Select Entity/Table in the Select Report Subject pane.
7. In the Select Report Fields pane, expand the Properties node under Entity, and select Name and Physical Name.

8. Click Run Report.

The report is displayed in the result grid, as shown in the following diagram:



Use Case 2

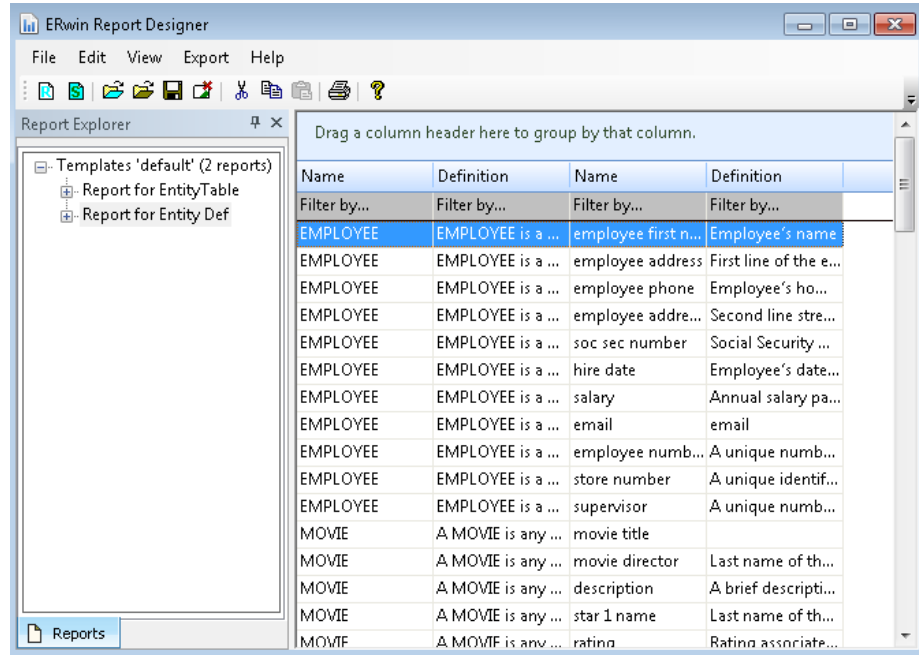
Description: Design a report with logical name and definition of entities and attributes. View the results in the results grid.

Follow these steps:

1. Open a model for reporting.
2. Click Tools, Report Designer.
3. Click Create a report on the toolbar. The Report Editor dialog appears.
4. Enter a name for the report.
5. Select Logical as the report type.
6. Select Entity in the Select Report Subject pane.
7. In the Select Report Fields pane, expand the Properties node under Entity, and select Name and Definition.

- 8. Similarly, expand Attribute, Properties, and select Name and Definition.
- 9. Click Run Report.

The report is displayed in the result grid, as shown in the following diagram:



Use Case 3

Description: Design a report with physical name of entities and physical name and domain name of the corresponding attributes. View the results in the results grid. Sort the rows based on domain name to understand which attributes share the same data domain.

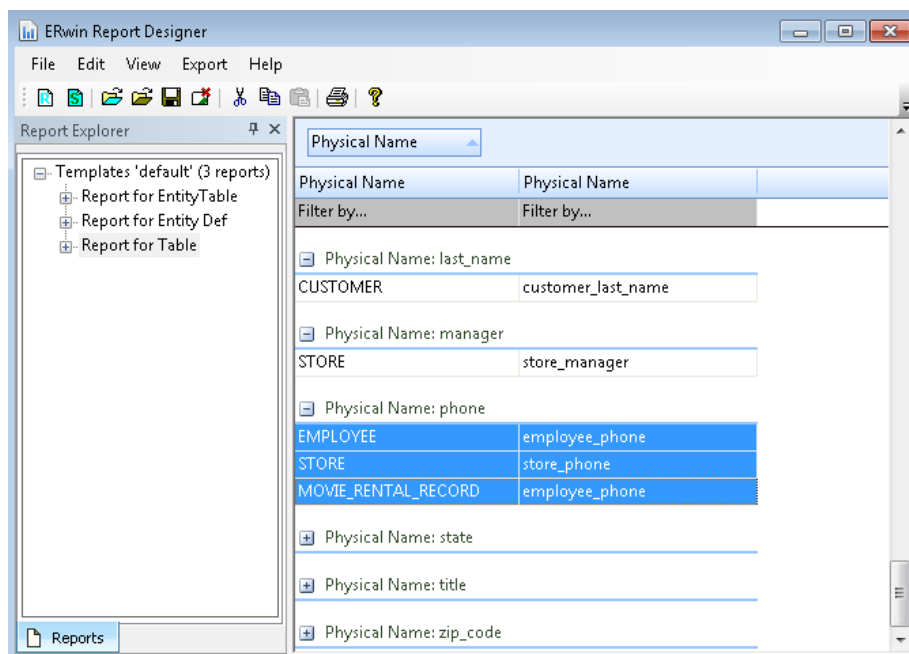
Follow these steps:

- 1. Open a model for reporting.
- 2. Click Tools, Report Designer.
- 3. Click Create a report on the toolbar. The Report Editor dialog appears.
- 4. Enter a name for the report.
- 5. Select Physical as the report type.
- 6. Select Table from the Select Report Subject pane.

7. In the Select Report Fields pane, expand the Properties node under Table, and select Physical Name.
8. Similarly, expand Column, Properties, and select Physical Name. Under Column, expand Parent Domain, Domain, Properties, and select Physical Name.
9. Click Run Report.

The report is displayed in the result grid.

Drag the Parent Domain Name column (3rd column) to the top of grid to sort the report based on parent domain. You can also sort columns by clicking the column header. The following diagram illustrates the report:



10.

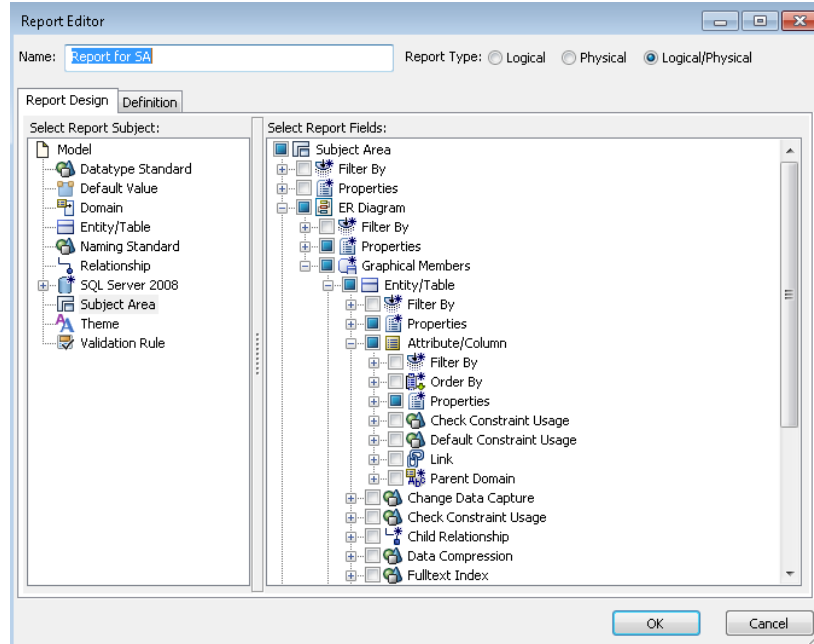
Use Case 4

Description: Design a report based on diagram membership. Include entities and attributes and then export the report to HTML.

Follow these steps:

1. Open a model for reporting.
2. Click Tools, Report Designer.
3. Click Create a report on the toolbar. The Report Editor dialog appears.

4. Enter a name for the report.
5. Select Logical/Physical as the report type.
6. Select Subject Area in the Select Report Subject pane.
7. In the Select Report Fields pane, expand the ER Diagram node, expand Properties and the select Name.
8. Similarly, expand Graphical Members, Entity/Table, Properties, and select Comment, Physical Name, as shown in the following diagram:



9. Expand Graphical Members, Attribute/Column, Properties, and select Comment, Physical Name.
10. Click Run Report.
The report is displayed in the result grid.
11. Click Export, Export to HTML.
12. Select the directory where you want to save the report.
13. Browse through the report contents.

Appendix A: Appendix

This section contains the following topics:

[Third Party Software Acknowledgment](#) (see page 63)

Appendix B: Third Party Software Acknowledgment

The following license agreements are available in the \Bookshelf Files\TPSA folder in the CA Bookshelf:

- Boost Software License ([../TPSA/Boost.txt](#))
- Flexera FLEXNet Publisher ([../TPSA/Flexera.txt](#))
- springsource ldap 1.3.1 ([../TPSA/Apache License.txt](#))
- Commons Collections 3.2.1 ([../TPSA/Apache License.txt](#))
- Commons Logging 1.1.1 ([../TPSA/Apache License.txt](#))
- Commons Lang 2.5 ([../TPSA/Apache License.txt](#))
- Commons Pool 1.5.5 ([../TPSA/Apache License.txt](#))
- Commons IO 2.0.1 ([../TPSA/Apache License.txt](#))
- Commons DBCP 1.4 ([../TPSA/Apache License.txt](#))
- Log4j 1.2.16 ([../TPSA/Apache License.txt](#))
- Google-gson 1.7.1 ([../TPSA/Apache License.txt](#))
- Spring Security 3.0.7 ([../TPSA/Apache License.txt](#))
- Spring Framework 3.0.6 ([../TPSA/Apache License.txt](#))
- Commons FileUpload 1.2.2 ([../TPSA/Apache License.txt](#))
- Open CSV 1.8 ([../TPSA/Apache License.txt](#))
- Oracle 11G JDBC driver 11.1.0.6 ([../TPSA/O11G JDBC Driver.txt](#))
- OpenSSL 0.9.7.d ([../TPSA/OpenSSL 097d.txt](#))
- Google ctemplate 2.2 ([../TPSA/gctemp_22.txt](#))
- Tomcat 7.0.19 ([../TPSA/Tomcat 7019.txt](#))

- Oracle (Sun) JRE 6 Update 24

JRE 1.6: This Product is distributed with JRE v.1.6. Oracle has provided additional copyright notices and information that may be applicable to portions of the JRE in the THIRDPARTYLICENSEREADME.txt file that accompanies the JRE files.

- Meta Integration Bridges

CA ERwin Data Modeler's metadata import/export capabilities are powered by Meta Integration® Model Bridge (MIMB), copyright 1997-2006.

Meta Integration is a registered trademark of Meta Integration Technologies, Inc. in the United States.