

ENERVEX®

SCA STEEL CHIMNEY ADAPTER

3912001 10.16

Product Information

Use

The SCA steel chimney adapter is used when installing the RSV, RS, RSHT or GSV fan on the top of a single or double wall steel chimney.

Description

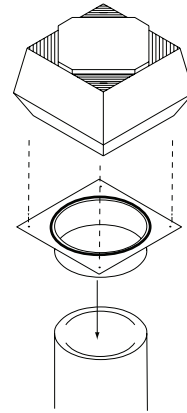
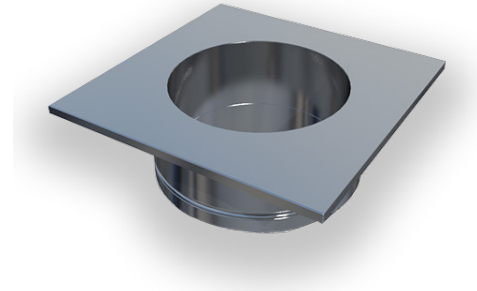
The adapter is designed to slide into the steel chimney for a tight fit. The outer diameter of the collar is 1/8" smaller than the inner diameter of the steel chimney, and has a 5" deep collar.

Material

The steel chimney adapter is made of 16GA, 316 stainless steel.

Warranty

2-Year Factory Warranty. Complete warranty conditions are available from ENERVEX Inc.



Specifications are subject to change without notice.

ENERVEX Inc.
1685 Bluegrass Lakes Parkway
Alpharetta, GA 30004
USA

P: 770.587.3238
F: 770.587.4731
T: 800.255.2923
info@enervex.com
www.enervex.com

ENERVEX®
VENTING DESIGN SOLUTIONS



ENERVEX®

SCA STEEL CHIMNEY ADAPTER

3912001 10.16

Product Information

Specifications

Fan Type	Flange Dimension	VENT Diameter							
		4"	5"	6"	7"	8"	9"	10"	12"
RSV 009, GSV 009	9.4" x 9.4" (240 x 240 mm)	311.0000.1004	311.0000.1005	311.0000.1006	311.0000.1007	311.0000.1008			
		4"	5"	6"	7"	8"	9"	10"	
RSV 009, GSV 009	12.2" x 12.2" (310 x 310 mm)								311.0000.1010
RSV 012, GSV 012, RSV 200, GSV 200, RS 009		311.0000.2004	311.0000.2005	311.0000.2006	311.0000.2007	311.0000.2008	311.0000.2009	311.0000.2010	
		5"	6"	7"	8"	9"	10"	12"	
RSV 012, GSV 012, RSV 200, GSV 200, RS 009	15.6" x 15.6" (395 x 395 mm)								311.0000.2012*
RSV 014, GSV 014, RSV 250, GSV 250, RS 012, RS 014,		311.0000.3005	311.0000.3006	311.0000.3007	311.0000.3008	311.0000.3009	311.0000.3010	311.0000.3012	
		8"	10"	12"	14"				
RSV 014, GSV 014, RSV 250, GSV 250, RS 012, RS 014	19.7" x 19.7" (500 x 500 mm)				311.0000.3014				
RSV 016, GSV 016 RSV 315, GSV 315, RSV 400, GSV 400, RSV 450, GSV 450, RS 016		311.0000.4008	311.0000.4010	311.0000.4012	311.0000.4014				
		16"	18"						
RSV 014, GSV 014, RSV 250, GSV 250, RS 012, RS 014	22.1" x 22.1" (562 x 562 mm)	311.0000.3016	311.0000.3018						
RSV 016, GSV 016 RSV 315, GSV 315, RSV 400, GSV 400, RSV 450, GSV 450, RS 016		311.0000.4016	311.0000.4018						
		20"	22"	24"	26"				
RSV 016, GSV 016 RSV 315, GSV 315, RSV 400, GSV 400, RSV 450, GSV 450, RS 016	24.5" x 24.5" (622 x 622 mm)	311.0000.4020							
	26.5" x 26.5" (673 x 673 mm)		311.0000.4022						
	28.3" x 28.3" (718 x 718 mm)			311.0000.4024					
	30.3" x 30.3" (770 x 770 mm)				311.0000.4026				

*SCA has an over-sized flange

Specifications are subject to change without notice.

ENERVEX Inc.
1685 Bluegrass Lakes Parkway
Alpharetta, GA 30004
USA

P: 770.587.3238
F: 770.587.4731
T: 800.255.2923
info@enervex.com
www.enervex.com

ENERVEX® 
VENTING DESIGN SOLUTIONS