

# ENERVEX® OPS OVER PRESSURE SWITCH

3912005 03.16

Product Information

## Use

The OPS monitors positive pressure in firing and ventilation systems.

## Description

The OPS, Over-Pressure Switch, is an adjustable differential pressure switch. It is used in conjunction with a MODS™, Modulating Over-Draft Damper System for over-pressure protection. If excessive pressure builds up between the boiler outlet and the system damper, the switch will shut down the heating appliance, while the EBC 30/31 control unit drives the damper completely open to relieve the pressure. The switch is suitable for air, flue and exhaust gases and should be mounted in the vertical position.

## Material

The switch housing and the internal switch are made of polycarbonate. The diaphragm is made of NBR (silicone), while the switching contact is made in fine silver.

## Listings

CE Approved.

Manufactured at an ISO9001 certified plant.

## Warranty

2-Year Factory Warranty. Complete warranty conditions are available from ENERVEX Inc.

## Specifications

Maximum Load	250 VAC, 1.0 Amp
Range of Operation*	.08 to .80"W.C. (20 to 200 Pa)
Temperature Limits	-4°F to +185°F (-20 to +85°C)
Max. Pressure	1.4 PSI (100 mbar)
Conduit Connection	1/4" Solderless Quick Connect Terminals
Pressure Connections	Two plastic tubes, OD 1/4" (6.0mm)
Weight	0.4lb (0.2 kg)
Housing	NEMA 3 (IP 54)

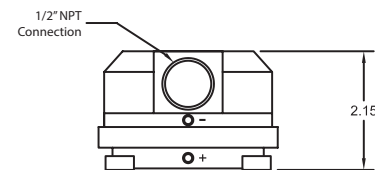
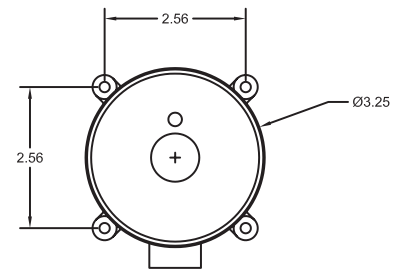
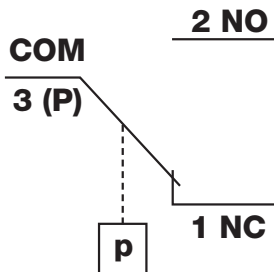
### OPS Switching Function

#### As pressure rises:

1 NC opens, 2 NO closes

#### As pressure falls:

1 NC closes, 2 NO opens



Specifications are subject to change without notice.

ENERVEX Inc.  
1685 Bluegrass Lakes Parkway  
Alpharetta, GA 30004  
USA

P: 770.587.3238  
F: 770.587.4731  
T: 800.255.2923  
info@enervex.com  
www.enervex.com

**ENERVEX®**  
VENTING DESIGN SOLUTIONS