

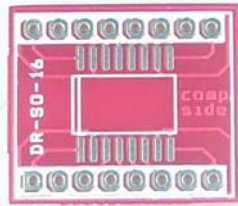
DR-SMD2DIP-SOIC16 SOIC 16 to 16 Pin DIP Converter

User Guide

Product picture says it all. This is a simple PCB to solder any SMD IC of 16 Pin SOIC package.

This comes as plain PCB. Nothing is mounted on it.

Below is the enlarged view.



PCB Size: 23mm x 20mm
Converted to 16 Pin DIP 300 mil Width