

Elmore roots nursery

Grow Your Own Fruit!



2012 catalog

"If it grows in Elmore, it will grow where you are.."

Price
\$5

Your partner:

Why our trees & shrubs do so well at your place:



With our 32 years of testing what does well in our Northern Vermont climate (and what doesn't), we only sell varieties that have proven themselves. We propagate many of our plants from our own orchard and berry rows. We graft our fruit trees onto the hardiest rootstock known. Our trees & shrubs grow slowly and steadily, so they'll continue to grow surely and well-balanced at your place. We don't spray chemicals but

we get a lot of nice looking fruit, so you can too.

We know fruit trees, berries, and nut trees. Our knowledgeable crew has worked more than 100 years (combined) growing fruits and nuts in the north country. Our nursery is a certified organic farm. Our plants are healthy and ready to grow at your place under your natural care. Our trees and shrubs know Vermont winter and they know they can come out the other side even stronger. Many of our fruit trees will grow and produce for 100+ years. You can't get fruit that tastes this good in stores!!!

Members of:
 North American Fruit Explorers
 NOFA Vermont
 Vermont Vegetable &
 Berry Growers Assoc.



Your purchases and kind words help to support six families, our organic farm, hardy plant research in Northern Vermont and help build our local community.

In our store we have everything to nurture your plantings:

The best hand tools - The most helpful books - Natural plant food and organic sprays

and in our plants to nurture you:

World's Healthiest Foods Highest in Antioxidant Phytonutrients

Antioxidant Content measured in mmol/100g serving (100g=3.5 oz)

Blackberries	5.75	Blueberries	2.68
Walnuts	3.72	Prunes	1.72
Strawberries	3.58	Plums, black	1.21
Cranberries	3.13	Kiwi fruit	0.99
Raspberries	2.87	Broccoli, cooked	0.78



"We went to an island in the Caribbean with little groves tucked away in the hills and this place is just like that." Bob, Craftsbury

"There's nobody else that I've run across that hands you a planting guide when you buy a plant." Henry Homeyer, NH

Paintings by Gabriel Tempesta, Drawings by Gaia Fried, Heidi Meyer-Bothling

New for 2012

New stocky 12-inch tall Spring Value **blueberry plants, \$15**

Potted ginger and tumeric for cooking and health. Grow outdoors May-Sept.

New cultivars from Russia, Siberia, and Vermont of grapes, quince, northern kiwis, pears, edible honeysuckle, edible mountain ash, bush cherries, medlar, and more.

New larger bearing age trees in pots, ready to bear fruit very soon in your yard.

New 'Spring Value' potted fruit trees replace 'bareroot' trees offered in previous years.

Advantages:

Lower priced, \$39 each

Easily transportable

No transplant shock

No lag time to start growing

Not susceptible to drying out

No rush to plant

Organically grown locally at Elmore Roots.

Plenty of feeder roots and a nice, well-nourished root ball.



Elmore Roots Tree Planting Mix is what we use and recommend for great results. (You're not going to be able to put anything at the bottom of the hole, later)

There is a lot more than we can fit in our catalog - handouts in our store and info all around the nursery and on our Web site, elmoreroots.com

Mission Statement

To find and keep growing the best fruit and nut varieties that will thrive on the coldest hillsides in Vermont, using the simplest sustainable methods.

To be an educational resource for our customer's continued success.

And to be a nurturing place for the plants, the crew, our customers and the natural world.



The Elmore Roots crew from left to right: David, Becca, Zach, Tyler, and Clifton (not in picture)

TABLE OF CONTENTS

Pears	4	Roses and Lilacs	14
Plums	5	Cranberries	15
Apples	6	Currants	15
Cherries	8	Grapes	16
Apricots	8	Kiwis	17
Peaches	8	Asparagus	17
Strawberries	9	Gardenhouses	17
Nut Trees	9	Roots & Herbs	17
Blueberries	10	Guarantee	18
Raspberries	11	Shrubs & Vines	19
Elderberries	13	Flowering Crabs	19

Pears

2-3 different varieties
for pollination.
Plant 20-25' apart.



It's easy to grow pears around here if you start with the right varieties for our climate. They put on quite a flower show and have less challenges than apples. It seems the insects and diseases haven't established themselves yet like they have with apples. They can live 200 years. They produce juicy succulent fruit in abundance... from mid August through early October.

Dessert/Column A

- Waterville™** An Elmore Roots introduction known for its hardiness and fruit quality. Discovered growing in an old orchard in Waterville, VT.
- Patten*** Very large succulent fruits in late September for fresh eating, etc.
- Luscious*** Large, juicy sweet yellow pear, ripening in mid to late September from South Dakota. Nice fall leaf color. Closest to a Bosc Pear.
- Golden Spice** Old time favorite is a versatile pollinator ripening in September
- Gourmet*** High quality pear from South Dakota, not for pollinating Luscious
- Stacey** Abundant fruit late in August with excellent flavor. Heirloom. Easy to grow & fruits early in life with large dependable crops..
- Summercrisp*** Crispy, juicy slicer, big harvests in August. Wonderful flavor! Can eat firm (like an Asian Pear) or as it ripens and gets tender and 'melting'. **Count on this pear for a good harvest every year.**
- * Available in bearing age size.

Siberian/Column B

- Clark** Small fruit, good for canning, ripens all at once.
- David or John** Very hardy & disease resistant, bears early, excellent for sauce or jam.
- Pepi or Ely** Small fruit, disease resistant, good for cooking & sauce.
- Ure** The best of the Siberians for fresh eating. Closest to a Seckel Pear


It's best to choose two from Column A & 1 from Column B for best fruit production. All Column B selections are extremely hardy & excellent pollinators. If you only have room for 2, & live in a warmer part of Vermont, stick to the Column A varieties. **\$59, \$99, & \$175* sizes.**



Photo by Joyce Dutka



"One hundred percent survivability through the winter. It was amazing.. If I can do it, anybody can do it." Alan, Wolcott



2-6 different varieties
for pollination.
Plant 6-15' apart.

PLUMS

"I can't believe I'm standing here in Elmore and eating plums that are this good."

Barbara, Montpelier

Golden sweet juicy plums ripening at Elmore Roots.

American Types

- LaCrescent*** Golden Plums in August, excellent flavor, bears at a young age.
- Alderman** Red juicy fruit with great flavor, bred in Minnesota for cold climates. Bears early.
- Pembina** Red freestone plum, excellent fresh eating in August.
- American** Light red, small abundant fruit, loads of blossoms, seedling vigor, fast-growing.
- Red Diamond** Disease resistant small red/purple plum from Minnesota. Small compact tree, abundant flowers. Bears early in life.
- Superior*** Large, dark red with yellow flesh, sweet, juicy, ripens mid-late August. Bears early.
- Black Ice** Sugary purple plum with great promise from Wisconsin.
- Toka*** Red, early September, prolific, excellent pollinator, rich flavor and fragrance.
- Underwood** Red, August plum, very juicy & sweet. Freestone.
- Waneta*** Purple-red, September plums, with a mango-like flavor. Ruins many a shirt.
- * Available in bearing age size.

European Types

- Opal** Purple with yellow flesh, from Sweden.
- Mt. Royal*** Dark round purple fruit, sweet excellent quality. Fantastic for fresh eating and for drying
- Hildreth** Purple sweet small prune plum from Wyoming
- Todd** Blue-purple prune type, good for drying
- European types tend to be self fruitful but are helped by another European pollinator. **\$59, \$99, & \$175* sizes.**

Not all sizes are available for each variety



Plums are show stoppers up here at the farm. Sometimes in August & September you can't see the ground through the multi-colored plums. The trick is to plant a grove of them (4-6 trees) 8-15' apart & let them grow in a close group. Some magic happens ... between them. Plant Americans with Americans, Europeans with Europeans for cross pollination. It's ok to have both kinds in the same area.



APPLES



*"This is the stuff of legends.
Everyone I know comes out
here." Mark, Huntington*



DR= Disease Resistant
 MC= Macintosh Family
 TSS= Tree Stays Small
 HL= Heirloom Variety

2-3 different varieties for pollination. Plant 20-30' apart.

3-5' Starter Size \$59
6-7' Field Ready, \$99
8' + Bearing Age, \$175

"Someone gave us apple trees from down country, but yours do so much better!"
Mrs. A. from Northfield

Home Orchard Package: Buy 6 or more apple trees and get a 10% discount. Sizes are approximate. Not all varieties are available in all sizes. Please ask for varieties you don't see.

	Color	Ripens	Fresh Eating	Baking	Sauce	Cider	Keeps	
Bethel	Red green	Early Oct.	✓	✓	✓	✓	✓	HL
Burgundy	Dark Red	Mid Sept.	✓	✓	✓	✓		
Centennial Tasty Crab	Light Red	Late Aug.	✓		✓			
Cortland	Red	MidSept.	✓	✓	✓	✓		MC
Duchess	Red yellow	Early Sept.	✓		✓			DR,HL
Connel Red	Red	Late Sept.	✓	✓	✓	✓	✓	MC,DR
Hadlock Reinette	Russet	October	✓			✓	✓	DR
Haralson	Red yellow	Late Sept.	✓	✓	✓	✓	✓	HL
Hazen	Red	Early Sept.	✓	✓	✓	✓		TSS
Honeycrisp	Red	Late Sept.	✓	✓	✓	✓	✓	MC
Honeygold	Yellow	Early Oct.	✓	✓	✓	✓	✓	DR
Kerr Tasty Crab Apple	Red	Sept.	✓		✓	✓		DR
Liberty	Red	Early Oct.	✓	✓	✓	✓	✓	DR
Macfree	Red	Sept.	✓	✓	✓	✓	✓	DR,MC
MacIntosh	Red green	Sept.	✓	✓	✓	✓	✓	MC,HL
Northwest Greening	Yellow	Late Sept.	✓	✓		✓	✓	HL
Nova Easy Gro	Red yellow	Sept	✓	✓	✓	✓		MC,DR
Northern Spy	Red	Early Oct.	✓	✓		✓	✓	DR
Red Astrachan	Red	August	✓		✓	✓		HL
Red Baron	Red	Late Sept.	✓	✓	✓	✓	✓	DR
Scott Winter	Red	Late Sept.	✓	✓	✓	✓	✓	HL
Sweet Sixteen	Red	Sept.	✓	✓		✓	✓	DR
Wealthy	Red yellow	Late Sept.	✓	✓	✓	✓		HL,TSS
Wolf River	Red	Sept.		✓	✓	✓		HL,DR
Yellow Transparent	Yellow	Early Aug.	✓		✓			HL,DR





CHERRIES

Self fruitful. Do not need a pollinator. Plant 15' apart.



Pie Cherries taste like cherry pie right off the tree but are not as sweet. Abundant light pink blossoms in the spring. Self fruitful (you only need one to get fruit, but you'll wish you had more).

- Bali** Vigorous grower with large fruit from Alberta, Canada. Delicious & plentiful. Excellent frozen (with pits removed).
- Balaton** from Hungary and a bit sweeter than most.
- Mesabi** Somewhere between a sour & sweet cherry from Minnesota.
- Meteor** Naturally small tree, bright red fruits, excellent flavor.
- Montmorency** 600-year old variety from France, tree can get large, but usually doesn't in our climate. The classic great tasting sour cherry fruit.
- North Star** Stays shortest of all varieties, from Minnesota, red flesh, great flavor.

\$59, \$99, & \$175 sizes. *Not all sizes are available for each variety*

"We are so happy with the cherry trees we bought from you in 2002. We had 50 pounds from one tree. We made cherry jam and tarts." Jean & John, Hinesburg



APRICOTS

2-3 for pollination
Plant 15' apart.

Apricots are not as reliable as our pears, plums, or apples, but these varieties are worth a try in a protected spot.

- Sungold** One of the hardiest apricots ever from Minnesota
- Moongold** Fresh eating, canning, or drying. ripens in August.
- Adirondack Gold** Small plum-like red fruits, ripens in August.
- Manchurian** These seedlings are worth a try. Beautiful early pink flowers & the potential for good fruit. Good for drying.
- Mormon Chinese** Good flavor, late blooming with frost resistant buds.
- Scout** Worth a try even in northern Vermont.

\$59, \$99, & \$125 sizes. *Not all sizes are available for each variety*



PEACHES

Self fruitful. Do not need a pollinator. Plant 15' apart.



Best in a greenhouse or next to a warm foundation or along a river or by a lake. Not for coldest locations. Thrives in Burlington area.

\$59, \$99, & \$125 sizes. *Not always available in all sizes*

Reliance Developed by Professor Elwyn Meader of New Hampshire. We planted some in Burlington that were fruiting heavily their second year and quite good. Now growing in Barre, Richmond, and Montpelier.

McKay A chance seedling from Wisconsin. Very hardy with tasty fruit.



STRAWBERRIES

Plant 8" apart, rows 2-3' apart. 25 plants could fill 3x10' rows or a 10'x3' bed.

- Junebearing Sparkle** Mid season, medium size berries, easy to grow. Very good for jam and freezing, **most excellent flavor** and heirloom quality.
- Northeaster** Early season, large berries, very fine flavor. **Excellent vigor and disease resistance.**
- Everbearing Seascape** **Large**, dark red firm sweet berries **July through September.**
- (Day Neutral) Mara des Bois** Small berries, unbelievable flavor,, fragrant, bears over a long season, from June thru September. **25 for \$29. Potted \$7.50**

Potted 5" stocky plants \$5.95, trays of 8 pots \$40 (save \$7.65) certified organic. Bareroot (April to early June only) \$19/bundle of 25 - not certified organic.

Nothing is better than fresh strawberries from the garden!

NUT TREES

2-3 for pollination. Plant 20-30' apart (Hazelbert bushes, plant 3-6' apart).

*These are some valuable trees to grow for shade, fine wood, high protein nuts, wildlife food, & fun. **Prices for Nut Trees: \$35 and \$75 sizes***

They take some time to mature and they are worth the wait.

(Hazelnuts sometimes begin bearing in 1 - 3 years)

- Black Walnut** Valuable wood, flavorful nuts, hardiest selections you will find.
- Butternut** Most northern native of the walnut family, excellent flavor.
- Buartnut** Cross between Butternut & Japanese Heartnut. Fast grower showing some apparent resistance to disease.
- American Chestnut** Old classic from a possibly resistant strand north of the Adirondacks
- Shagbark Hickory** Delicious nuts & ornamental shaggy bark
- Ashworth Bur Oak** The hardiest oak, edible acorns low in tannic acid & nearly sweet.
- Hazelbert** Edible, self-thickening 8-12' hedge or single shrub. **Easy to grow** nut clusters you can crack with a hand nutcracker. Amazing orange-red fall color. makes an excellent windbreak or screen. \$35 and \$75 sizes.
- Swiss Stone Pine**
- Korean Nut Pine** Large cones with large edible, tasty pine nuts. 1-2' tall trees.



BLUEBERRIES

2-3 different varieties for best pollination.
Plant 4' apart, shorter ones can be closer.

	Mature Ht.	Berry Size	Ripening	Spacing
Bluecrop	4-5'	X-large	Late July	4'
Bluegold	4'	Med/Lg	August	4'
Blueray	4-5'	Large	Late July	4'
Bonus	4-5'	XX-large	August	4.5'
Chippewa	4'	Med/Lg	Late July	3-4'
Friendship*	3'	Small	August	3'
Putte*	1'	Small	July	2'
Nelson	4-5'	Large	Aug-Sept	4'
Northblue	2'	X-large	July	2-3'
Northcountry*	2'	Small	July	2-3'
Northland	4'	Medium	Late July	4'
Northsky*	1'	Small	July	2'
Patriot	4-5'	X-large	July	4'
Polaris	4'	Large	July	3-4'
Superior	4'	Med/Lg	Sept	4'

*Native varieties

Three seasons of interest:
White bell flowers in spring.
Berries blue in summer.
Red fall leaf color.



1 gallon Starter Size \$19/each
2 gallon Wider Fuller \$29/each
3 gallon Tall Bushier \$39/each
7 gallon Bearing Age \$79/each

All sizes, Buy 5, get 1 free

Ask about our instant blueberry patch special

For best results, add our Bountiful Blueberries Mix to your planting hole or as a top dressing in future years. Keep your bushes free of weeds, mulched, & watered. Add elemental sulfur as needed to keep pH low & add ProHolly each spring for food.



Elmore Roots Bountiful Blueberry Mix

"Eat the blues without having to sing them"

*our own proprietary blend based on 32 yrs.
of observation and excellent results*

all ingredients acceptable for use in certified organic production.

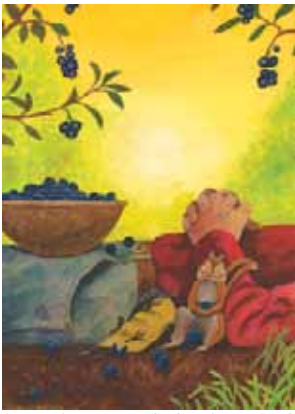
20 qt size \$22

*We recommend 1/4 to 1/2 of a bag per plant
for establishment of your blueberry patch*



10

"The blueberries we got from you are loaded with fruit! They're fabulous!"
Katherine, Montpelier



Original paintings by local artist Gabriel Tempesta, for sale as posters and note cards in our store.

'Royalty' Purple Raspberries



RASPBERRIES

Self fruitful & does not need a pollinator. Plant 1-2' apart for reds & 3-4' apart for blacks & purples.

variety	Color of fruit	Ripens	How far apart to plant	# of plants recommended for a family of 4
Nova July Summer bearing	Red	July	1-2', 6-8' rows	25
Kilarney or Himbo Top	Red	July	1-2', 6-8' rows	25
Polana Early Sept. bearing	Red	Late Aug-Sept	1-2', 6-8' rows	25
Royalty Purple Raspberry	Purple	July	3-4', 10' rows	12
Brandywine Purple Raspberry	Purple	July	3-4', 10' rows	12
Black Hawk black raspberry	dkpurple	August	3-4', 10' rows	12
Brown Hill Blackberry™	Black	September	3-4', 10' rows	12
Fort Kent King Blackberry	Black	September	3-4', 10' rows	12
Prime Jan Blackberry	Black	September	3-4', 10' rows	12
Prime Jim Blackberry	Black	September	3-4', 10' rows	12



Potted 2 gallon (stocky bushes) \$18/each.
 Buy 6 or more & receive a 10% discount on them. Certified organic.
 Nova & Polana available as bareroot in bundles of 25 for \$75.
 (Our bareroot raspberries are not certified organic & are available this way only in April to early June).



THE LAND OF THE LESSER KNOWN FRUITS

"Lesser Known Fruits" **bushes** 2 gallon \$25, 3 gallon \$35, 5 gallon \$55
Mulberry, Quince, Medlar, Shipova and Tasty Crabapple **trees** 5 gal \$59, 7 gal \$99

ARONIA

Can grow even in moist soils, summer fruit is great for jam or juice (you find it in many kid's juices nowadays) white flowers in spring and best red fall color. Self fruitful. Plant 3-5' apart in sun or shade.

ROSEHIPS

These are the 1" fruits of the rugosa rose that are high in vitamin c. They make fruit soup from them in Scandinavia - at Elmore Roots we make a rosehip plum jam. Self fruitful. Plant 2-3' apart

MULBERRIES

Imagine an apple size tree filled with mellow blackberries in summer. Self fruitful. Plant 25' apart

QUINCE

Hardy Russian cultivar makes it easier for us to grow

TASTY CRABAPPLES

Crisp and full of many flavors, abundant and easy to grow Kerr, Chestnut, Centennial, Berry Red™ and Cliffhanger™ varieties.

MEDLAR

Heirloom colonial fruit thriving in southern VT.*

JOY BUSH CHERRIES

makes large cherries in September after the birds are not looking for them anymore. Self- fruitful. Makes large delicious cherries.

NANKING BUSH CHERRIES

Spring flower show followed by lots of small plump edible red cherries. Need two for fruit.

MONGOLIAN BUSH CHERRIES

Carmine Jewel and Crimson Passion are from Canada and make a superb dark purple jam. You need one of each for pollination success.

SHIPOVA

Edible mountain ash/pear from Eastern Europe.

HASKAPS

An edible honeysuckle for northern climates from Siberia and North Japan. Non-invasive*

Seaberry

Orange, high vitamin fruit. Bush * available by June

In order to keep up with our customer's needs, each year we buy some plants from other northern climate nurseries, which are not certified organic. As soon as they arrive here, they are managed 100% by certified organic standards on our farm along with everything else we grow here ourselves. There is a date (ie, 2012) on our labels which indicates the year these plants are certified organic.

LOTS more...

Fruit Growing Books

Gloves Central

The BEST Hand Tools

Cedar Benches

Cold Drinks

On farm Workshops

Consulting & Design

Organic Plant Care Materials

Backpack Sprayers

Truck Delivery

Planting Services

Elmore Roots T-Shirts



ELDERBERRIES

Adams
York
Nova
Native
Black European
Johns

2 or more for best fruit production. Plant 4-6' apart.

Old time Vermonters say they never get colds in the winter, sipping Elderberry juice from the freezer. Easy to grow with big harvests and a songbird's favorite. Can even grow in moist areas.



JUNE BERRY

Self fruitful, but planting 2 different varieties will produce a lot more fruit. Plant 6-10' apart.

Also known as Shad or Serviceberry or Amelanchier, these very tasty, super hardy, fruits are blueberry-like without the tartness. They are the first tree to flower in the spring. A rainbow of fall color adds to their appeal. makes these worth trying. Juneberries can also grow in partial shade and heavier soils, up to 10-18' tall. Saskatoons grow 6 to 10 feet tall and Fergie stays compact at 5 feet tall.



Native Juneberry	Princess Diana	Regent Saskatoon
Autumn Brilliance	Fergie	Martin Saskatoon
Cole's Select	Robin Hill	Smoky Saskatoon



EDIBLE GROUNDCOVERS

←Lingonberry
Strawberry
Wintergreen
Alpine Strawberry

Bearberry
American Cranberry →
Lowbush Blueberry
Low Growing Roses



Spring Apricot Blossoms at Elmore Roots



Outside the Store at Elmore Roots

NATURAL SCREENS & NATIVES

Instead of a fence, why not get some privacy from a neighbor or road with a hedges of shrubs and trees that are easy to grow? They can give flowers, shelter from wind, songbird habitat, fruit for wildlife & make your place feel like a home



inside its elegant boundary. Some of the best for our area are:

red osier dogwood, Juneberry, American plum, pussy willow, a ronia, winterberry, white cedar, hazelberts, Jerusalem artichokes, elderberries. **Ask for our natives list** for mature heights, soil, and light requirements. All of these make food for wildlife.

ROSES

"We have one of your roses. It is the only one that we bought anywhere that's ever lived. It does beautifully every year."
Margaret, Braintree

Our *easy to grow* roses are selections that have been bred for cold hardiness & disease resistance. These are the varieties you don't have to fuss over, so sit back and relax and don't forget to stop and smell the roses.

(xxx= most fragrant) Prices for Roses: \$25/each

	Color	Mature Ht.	Fragrance	Repeat Bloom	Disease resistant	Climbs
Blanc Dbl d'Coubert	White	5'	xxx	✓	✓	
Morden Sunrise	Lt. Orange	3-4'	xx			
Rosa Kashmir	Red	3'	xx	✓	✓	
Rosa Rugosa alba	White	4-6'	xxx	✓	✓	
Rosa Rugosa	Dk pink	4-6'	xxx	✓	✓	
Snow Pavement	Lt lavender	2-3'	xxx	✓	✓	
William Baffin (climber)	Deep pink	8-10'	x	✓	✓	✓

LILACS

(xxx= most fragrant) Prices for Lilacs: potted \$35; large \$55, Xlg \$89,

	Color	Mature Ht.	Fragrance	Bloom
Charles Joly	Double dark red	10-12'	xx	May
Japanese Tree Lilac	Creamy white	25'	x	June
Meyer's Palibin	Pale lavender	4-5'	xxx	June
Miss Canada	Bright pink	6-9'	x	June
Miss Kim	Pale lilac w/ purple fall color	6'	xx	June
Old Fashioned Purple/White	Lilac or White	12'	xxx	May
Donald Wyman	Deep Purple, Fragrant	8'	xxx	June
Yankee Doodle	Deep dark purple	8'	xx	May



GOOSEBERRIES

Pixwell Purple	Invicta Green
Hinnomaki Red	Jahn's Prairie
Hinnomaki Yellow	Tixia Red
Poorman Purple	Red George

Self fruitful. Plant 4-5' apart.

CURRENTS

Black Currants

Consort	Ben Sarek
Crandall	Blackdown
Titania	Nancy May

Red Currants

Red Lake	Jonkheer Van Tets
White Currants	Pink Currants
White Imperial	Pink Champagne

Self fruitful. Plant 4-5' apart.

JOSTABERRIES

A black currant-gooseberry cross

CRANBERRIES

No need for a bog. Plant them in acid well-drained soil. Watch them run and make large succulent dark red berries in time for those autumn feasts.



These are the easiest fruits to grow in Vermont. Currants & Gooseberries are also shade tolerant & bear fruit quickly!



2 gallon \$25, 3 gallon \$35

PawPaws

You need two for pollination. Plant 20' apart.



Pawpaws in Vermont

Native from southern Vermont to Michigan. This exotic fruit can be grown out of the wind and on the edge of a field.

LINGONBERRIES

Mini cranberries with a lot of flavor from Sweden, they like the same conditions as blueberries. Self fruitful. Plant 1' apart. 1 gallon \$19, 2 gallon \$29



GRAPES

Self fruitful & does not need a pollinator.
Plant 6-8' apart.



These grapes like a sandy gravelly loam & **lots of sun**. They like to grow along a stone wall, a southern side of a building, or trellised on wires or a fence. The toughest ones can go up an arbor or over a doorway. Most of our varieties have seeds (seedless are usually less hardy) & unbeatable flavor not found in stores. Come see & taste ours in September, or our famous Green Mountain Grape Jam anytime. Northern grape growing and wine producing books are available in our store.

Husky 2 gallon size, \$25.

Home Vineyard Package: Buy 5, get 1 free.



Bluebell

Excellent flavor, **blue**, early September ripening, wonderful translucence. **(C)**

Brianna

New **white** grape selected for its pineapple flavor, hardiness and productivity. **(W)**

Louise Swenson

Disease resistant hardy **white** grape for juice, wine, and fresh eating, mid Sept. **(W)**

Frontenac

Excellent **red** wine grape, very hardy, disease resistant, late September. **(W)**

Kay Gray

White, late August, for juice and fresh eating with superb flavor. Resists disease **(W)**

King of the North

Prolific, super hardy, blue **Concord**-like grape, bears early in life. **(W) (C)**

Marquette

Red wine grapes which do very well in Minnesota. **(W)**

Sabrevois

Blue black grapes that Quebec has built its wine industry around. **(W) (C)**

Somerset Seedless

New proven super hardy **seedless grape**, small light **red** grape with big flavor.

W = Excellent for wine making;
C = Concord-type grape



KIWIS

We are the kiwi capital of Vermont, growing them here for 30 years.



Arguta Males have healthy green leaves and twine around poles and trees up into the stratosphere. Females make many succulent green kiwi fruits 1" long with no fuzz, no peeling. Ripens in September at Elmore Roots. Many new super hardy cultivars from Siberia to choose from.

Kolomitka Older males have green, white, & pink on their leaves. Females have delicious tresses of succulent 3/4" kiwis with no fuzz, no peeling. Ripens in late August-September at Elmore Roots. Delicate fragrant blossoms in spring & so much fruit we have a new jam flavor!

Twining up one of the arbors at our farm are Hardy Kiwi vines. Just pop the fruit in your mouth. They taste like the ones from the store only better. You can fill your bowl with them and eat them all day long. Plant in a spot protected from the wind or plant a bush to block the wind.

2 gallon \$35, 3 gallon \$55

You need both male & female vines of the same species. Plant 6-10' apart

SUNSHINE GARDENHOUSES

We are the Vermont Rep. for Sunshine Gardenhouses. (Ask for our color brochure) Easy to put up Kit Available sizes:
6x8 8x12
6x12 8x16



HOMEGROWN JAMS

for a taste of summer anytime!

We Ship Jam
black currant elderberry
Vermont blueberry
green mountain grape crab apple
rhubarb ginger strawberry
pear raspberry rosehip
red currant kiwi plumberry
rhubarb ginger w/ hot peppers
Pear Honey Rowanberry

\$5/jar, Cases available at wholesale prices

"You make the best jam I've ever had!"

Galen, age 6 1/2, Essex

ROOTS & HERBS

Jerusalem artichokes	Rhubarb
Comfrey	Wintergreen
Horseradish	Native Ginger
Alpine Strawberry	Daylilies

1 gallon \$15

ASPARAGUS

Jersey Knight & Purple Passion

\$25 for a bundle of 25 vigorous roots

Asparagus is not organically grown. Available April through June. Some certified organic potted asparagus available.



"Makes you feel so wealthy to have fruit in your trees." Regina, Randolph Center



Fruit Clock™- Edible Timeline (Harvest Season)

April/May	June	July	August	September	October
Sweet sap	Juneberry	Strawberry	Gooseberry	Elderberry	Black walnuts
silver maple	Strawberry	Red, white &	Blueberry	Cranberry	Apple
Jerusalem	Rhubarb	black currants	Pear	Blueberry	Cranberry
artichoke	Asparagus	Raspberry	Apple	Pear	Jerusalem
Horseradish		Blueberry	Plum	Apple	artichoke
Edible honey-		Pie cherry	Everbearing	Blackberry	Horseradish
suckle			strawberry	Hazelnut	Pear
Rhubarb			Rosehips	Kiwi	
Asparagus			Mulberry	Joy bush	
			Lingonberry	cherry	
				Grapes	
				Plum	
				Fall Raspberry	

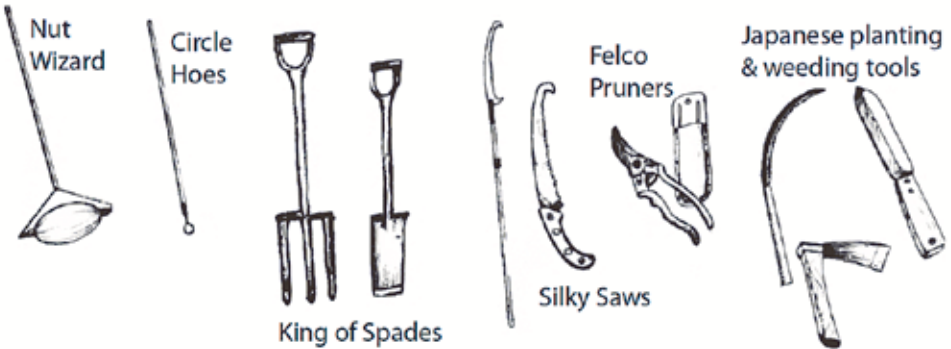
"I'm so thrilled we came out here. It is a piece of heaven. I want to come here next year for my birthday." Sue, Berlin

TOOLS

"My Silky pocketboy- it's the most phenomenal tool I ever had." Chris, South Hero

"Our king of spades has paid for itself 17 times over." Winnie, Irasburg

Our high quality hand tools make work a pleasure



GUARANTEE

We want you to have success! If your plant or tree does not "leaf out" the July following purchase, bring it back (so we can look at it) whole- with its roots in a pot or a bag and we will replace it, one time. We stand by our trees, however we don't replace trees that were chewed by animals, lawn mowers or string trimmers. We count on you to choose a well-drained planting location and to keep your trees watered well after planting and during the summer.

Because they are more experimental, we

do not cover peaches, apricots, quince, medlars, or pawpaws under our guarantee.

EASY TO GROW HARDY FLOWERS & SHRUBS

Forsythia 6-8'
Mock Orange 6-10'
Siberian Pea 6-8'
Hydrangea 6-7'
Winterberry 6-8'
Viburnums 6-8'
Rhodys & Azaleas 5'
Witch Hazel 8'
Basket Willow 8-15'



Interesting YARD TREES

Ginkgo	Hawthorne
Sweet Sap Silver Maple	Mountain Ash
Black Locust	Hackberry
Japanese Tree Lilac	Valley Forge Elm
Pagoda Dogwood	Ashworth Bur Oak
Ironwood	Tamarack/Larch
Amelanchier	Catalpa
Horsechestnut	Magnolia

FRUIT TREE SIZES

Pot Size	Price		Avg. Height	Avg. Calipers (trunk width)	
5 gallon	\$59	Starter Size	3-5'	1/2"-3/4"	beginning branches
7 gallon	\$99	Field Ready	6-7'	3/4"-1"	stockier w/ fruit buds
15 gallon	\$175	Bearing Age	7-8'+	1 1/4"+	thicker trunk, more branches & lots of flower and fruit buds

Some even larger \$250 size fruit trees may be available. 1 1/2"+

FLOWERING CRABS

Dolgo white
(also for jelly) 25'

Louisa Weeping
pink to 12'

Royalty red to 12'

Bechtel Ultra Pink
very fragrant 12'

Kola light pink
little roses to 20'



\$59, \$99, \$125 sizes.

HARDY VINES

American Bittersweet	Hops
Honeysuckle	Kiwis
Virginia Creeper	Clematis

\$19 and up

Instant Fruit Grove (just add water)

3 Apple Trees, 3 Pear Trees, 3 Plums, 1 Pie Cherry

Get 4th Plum as a free bonus

11 Trees Total

- 1) You select the size tree you'd like.
- 2) You pick up, or:
- 3) Add \$1.25/mile roundtrip for truck delivery.
- 4) Add \$30/tree for a 20 qt bag of our organic successful tree mineral planting mix, tree paint to prevent sunscald, deer repellent clips & liquid seaweed for transplanting success.
- 5) Add \$40/tree if you'd like us to set them out and plant them for you.



19

SPRING, SUMMER, & FALL HOURS (TILL OCT. 31)

Open 9:30-5:00, SUNDAY - FRIDAY

closed Saturdays

(802) 888-3305 (800) 42-PLANT!

Fax: (802) 888-8885

More info at elmoreroots.com · email: fruitpal@elmoreroots.com

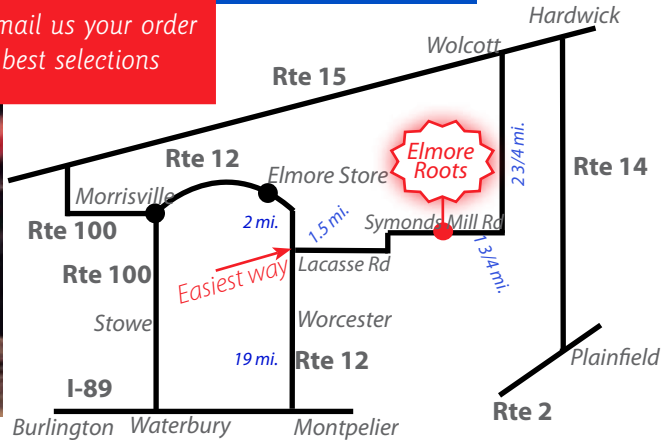
****Call if you need us to stay open later to pick up your order****



You can fax or email us your order to reserve the best selections



Freshly grafted fruit trees



"It's a hike, but it is such a paradise when you get here." Claude, Isle La Motte



If you come with a truck, bring a tarp to cover your plants or you can buy one from us. Please return pots so we can use them again and help us keep our prices down.

Elmore Roots
631 Symonds Mill Rd.
Elmore, VT 05680

Website: www.elmoreroots.com



"If I was a squirrel I would live here." Laura, Cambridge

Printed on recycled paper