

# AGENDA

## GOAL 1 ALLIANCE



### Board Members:

Richard Bishop • Laura Cleypool • Rick DeVries • Joe Elliot • Lindsey Gadbois •  
Rachel Hood • Tom Hoving • Rob Hyde • Janet Korn • Ted Lott • Traci Montgomery •  
Mary Roys • Jay Steffen • Eddie Tadlock • Ben Weatherhead • Rick Winn •

---

January 17, 2018

10:00a – 11:30p

29 Pearl Street, NW Suite #1

1. Call to Order
2. Election of Chair
3. River Design Guidelines
4. Michigan Street River Crossing
5. Economic Impact Study
6. Alliance Member Discussion
7. Next Meeting – April 18, 2018
8. Public Comment
9. Adjournment





**DOWNTOWN**  
GRAND RAPIDS INC.

## Goal 1 Alliance

October 18, 2017

1. Call to order: Tim Kelly called the meeting to order at 10:00am
2. Members Present: Richard Bishop, Laura Cleypool, Lindsey Gadbois, Rachel Hood, Tom Hoving, Ted Lott, Traci Montgomery, Mark Roys, Jay Steffen, Eddie Tadlock

Members Absent: Rick DeVries, Joe Elliot, Rob Hyde, Janet Korn, Ben Weatherhead

Others Present: Tim Kelly, Stephanie Wong, Murphy Ackerman, Gabi Schumacher (DGRI Staff), Trevor Bosworth

3. Introductions  
The Alliance took a moment to introduce themselves.
4. Grand Rapids White Water Presentation Discussion  
Mr. Bishop gave an update on the river restoration project, including the river restoration process and where White Water is currently at in the process. Mr. Bishop said this restoration will spur economic development along the river and contribute to the economic vitality of the region. Mr. Bishop said there are many different organizations and agencies that are working to ensure that the process is moving along. Mr. Bishop said White Water is currently working to acquire permits and easements to begin work in the river. Ms. Gadbois asked for clarification on the projected completion date of 2024, if it is just the work in the river or if it includes the river's edges. Mr. Bishop said he is working with the City to ensure that the river's edge and in water work are completed simultaneously. Ms. Hood asked what the public process is for the permitting process. Mr. Bishop said there will be public hearings and is working with Mr. Steffen to ensure that there is a robust engagement process throughout. Mr. Steffen said the City is currently working with Wenk Associates to ensure that the wet and dry portions of the river are being integrated and allowing additional

**MINUTES**

Minutes-October 18, 2017

opportunities for public engagement. Mr. Steffen said the City has a good working relationship with the DEQ and will ensure that there is ample notice given to allow for public input. Mr. Kelly asked Mr. Bishop to elaborate on the process with the snuffbox mussel. Mr. Bishop said the snuffbox mussel is an endangered species that is located in the river. Mr. Bishop said White Water is currently working to acquire the additional permits that will be needed to relocate the endangered species.

5. River Design Guidelines Activity and Discussion

Mr. Bosworth introduced himself and explained that Viridis Design is a consultant for the River Design Guidelines and is currently working with Wenk Associates. Mr. Bosworth gave an overview of the process for creating the guidelines and said they will help to identify the character of certain neighborhoods. Mr. Bosworth said the guidelines will not work to take away creativity from developers, but create suggestions and guideline to ensure that there is a cohesive river's edge. Mr. Bosworth shared the results of the outreach that has been completed thus far. Ms. Gadbois asked what the response from pedestrians was for the interventions that were recently done by the post office. Mr. Bosworth said that people responded very favorably and cars began to notice the activity and slow down when driving down this piece of Michigan Street. Ms. Gadbois asked if the consultant team has investigated connections for individuals coming into the downtown as opposed to only moving within the downtown. Mr. Bosworth said the focus of this contract has specific sites along the river pre-designated. Mr. Lott said he is hopeful that these guidelines do not become overly prescriptive and maintenance does not drive design. Mr. Steffen said the Detroit River Conservancy of maintenance not driving design. Because the maintenance for the riverwalk was funded, they were able to invest heavily in larger design ideas. Mr. Bosworth said there would be an opportunity for input from the group following this meeting.

6. FY 18 Project Overview

Mr. Kelly gave an overview of the various projects that this group will be charged with working on this year. Mr. Kelly shared the various engagement opportunities that will be available for the group throughout the year. Mr. Kelly said there will also be other opportunities that will arise, and staff will work to ensure that the group has an opportunity to participate.

7. Alliance Member Discussion

Mr. Hoving said he would like to see a mission statement for why this group is convening. Mr. Kelly said he will follow up on this at the next meeting.

8. Next Meeting- January 17, 2018

9. Public Comment:

Goal 1 Alliance

UNAPPROVED

**MINUTES**

Minutes-October 18, 2017

None

10. Adjournment:

Mr. Kelly adjourned the meeting at 11:35am

Minutes taken by:

Murphy Ackerman

Office Manager

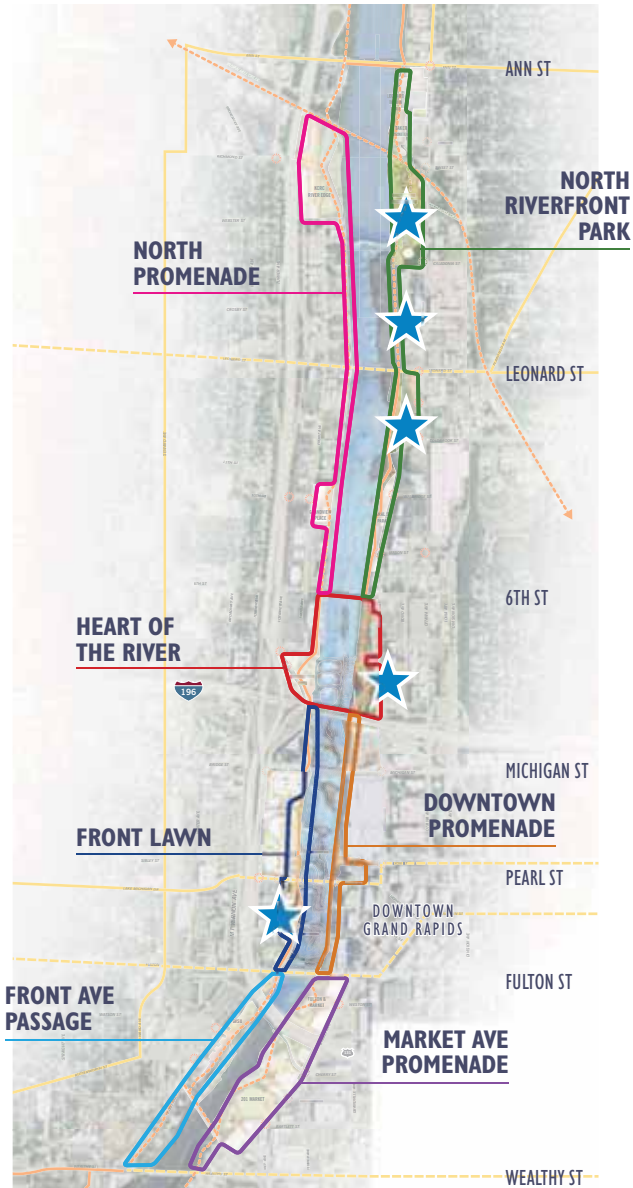
Downtown Grand Rapids Inc.



RIVER FOR ALL

# **DRAFT OPPORTUNITY SITES**

**12.15.2017 - Advisory Group**



## North Riverfront Park

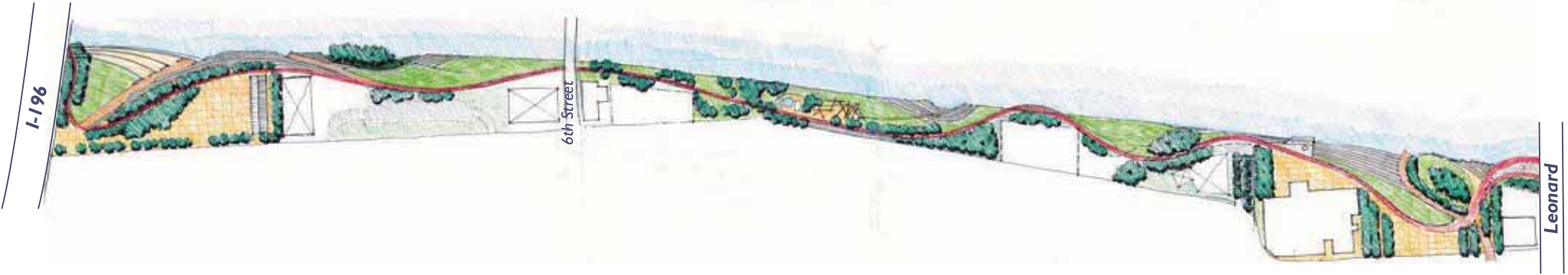
Leonard to Ann Trail  
Water Storage Yard Site  
Coldbrook Creek & Canal

## Heart of the River

North Monroe

## Front Lawn

Grand Rapids Public Museum







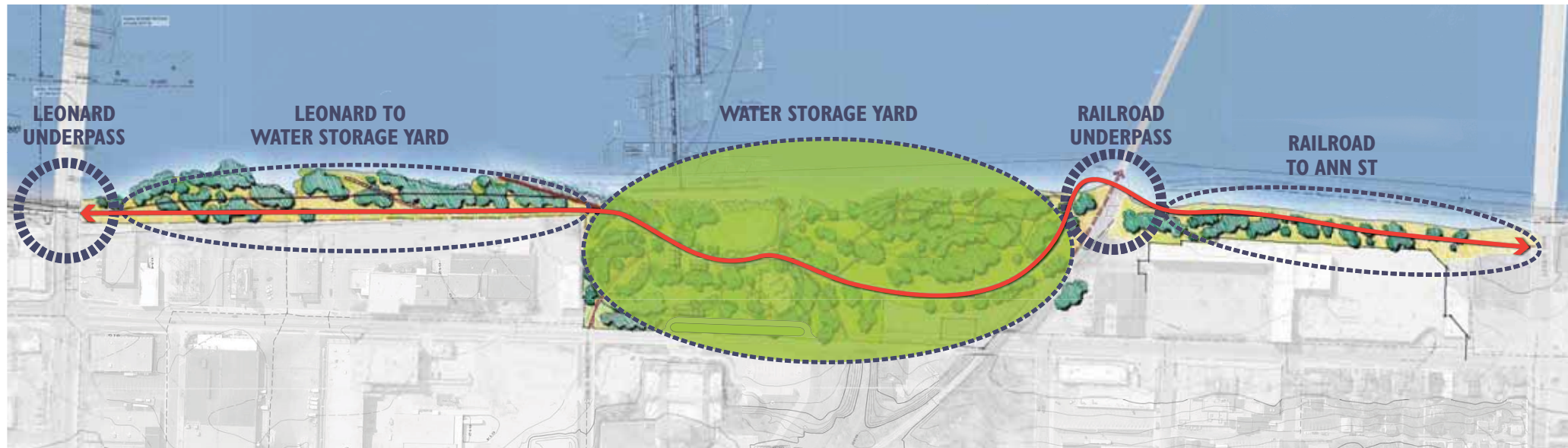
## North Riverfront Park

natural/river character  
 adventure parks  
 family picnics, gathering, leisure  
 outdoor learning  
 river recreation destination  
 touch the water





## North Riverfront Park - Leonard to Ann Trail



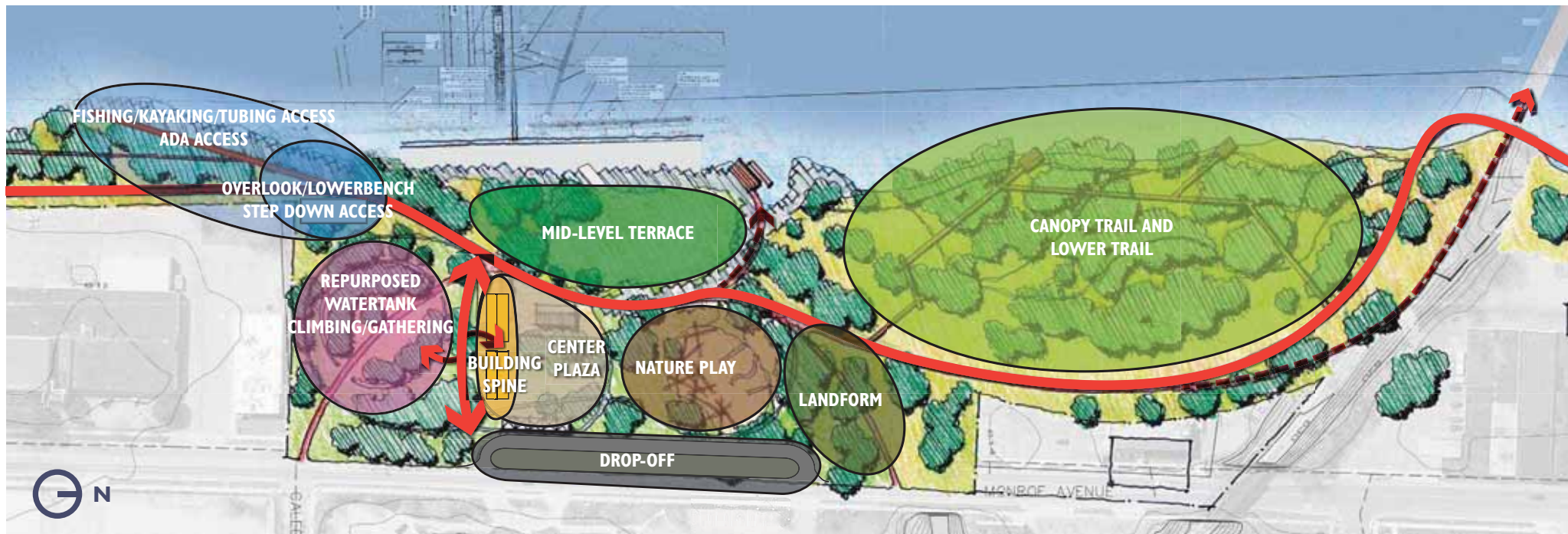
# North Riverfront Park - Water Storage Yard Site



KEY MAP

## Site Programming

- » Mid-level terrace
- » High use area downstream of barrier
- » Re-purposed water tank area
- » Building spine and center plaza
- » Drop off
- » Nature play integrated with landform
- » Canopy trail





## North Riverfront Park - Water Storage Yard Site

### CANOPY WALK



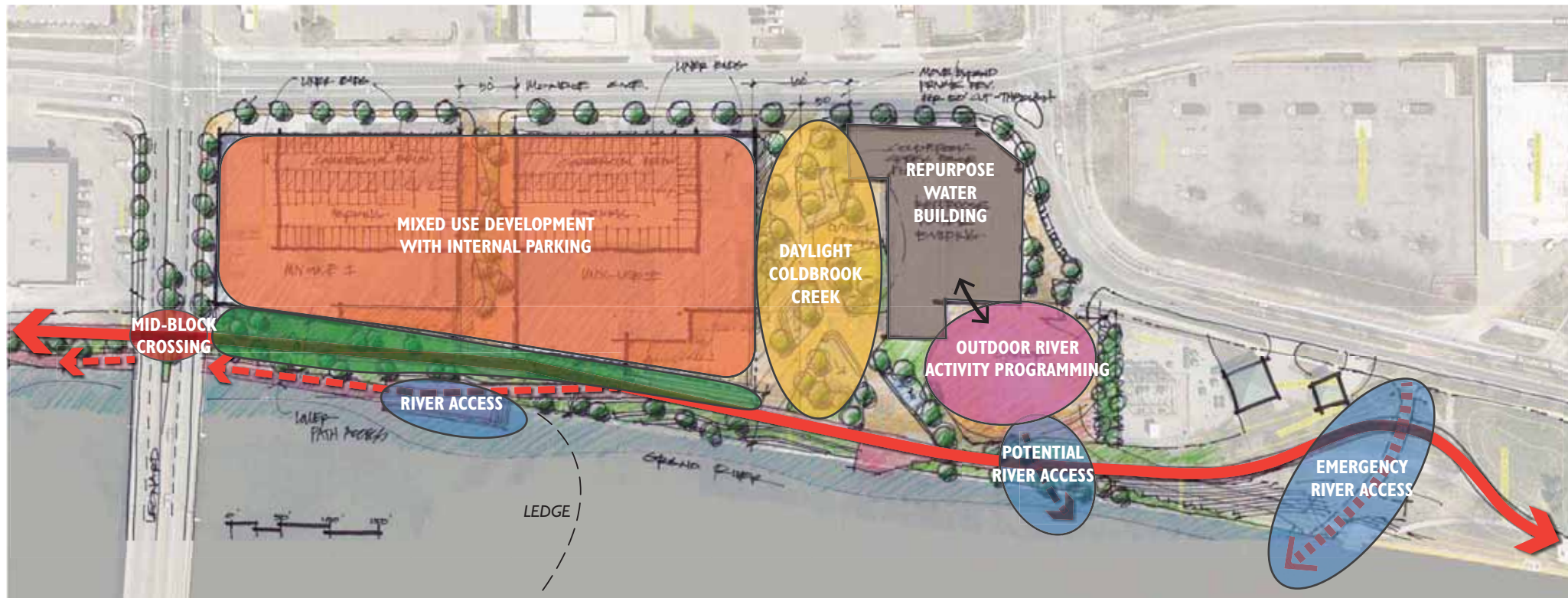
## North Riverfront Park - Water Storage Yard Site

### LOG JAM NATURE PLAY



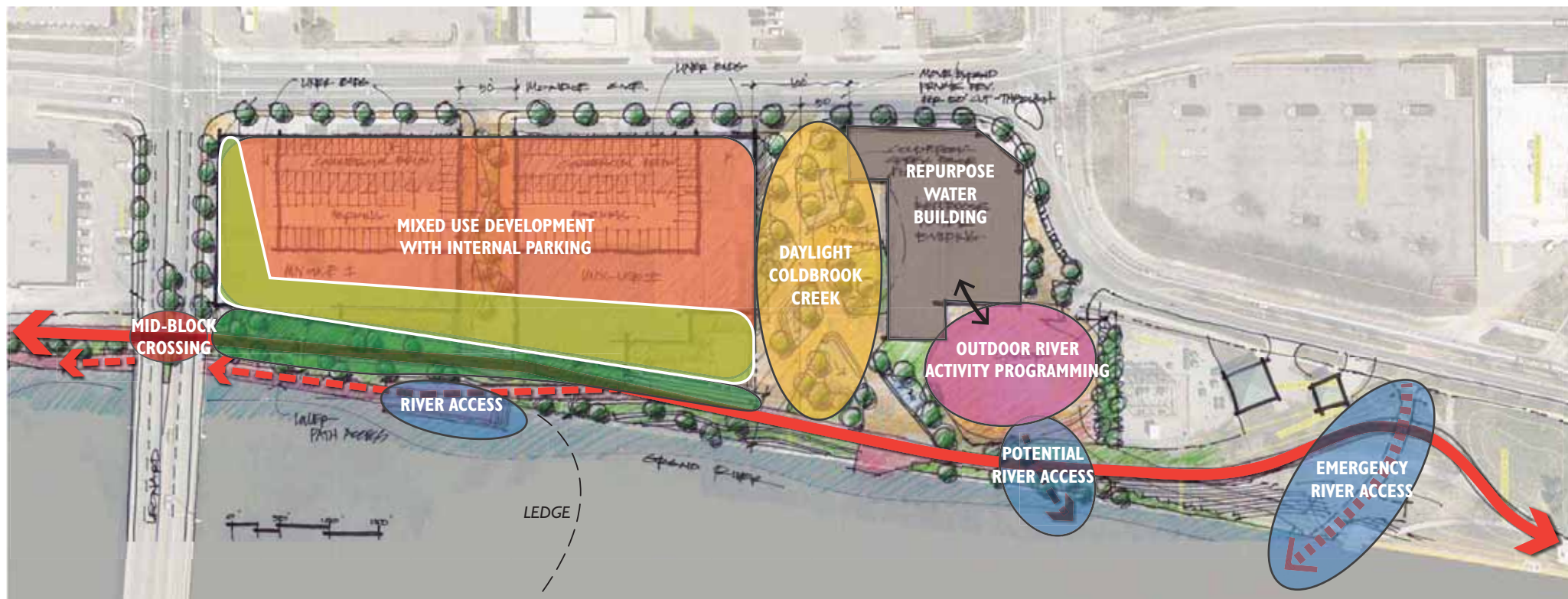


## North Riverfront Park - Coldbrook



# North Riverfront Park - Coldbrook

## 30% OPEN SPACE OPTIONS





# North Riverfront Park - Coldbrook

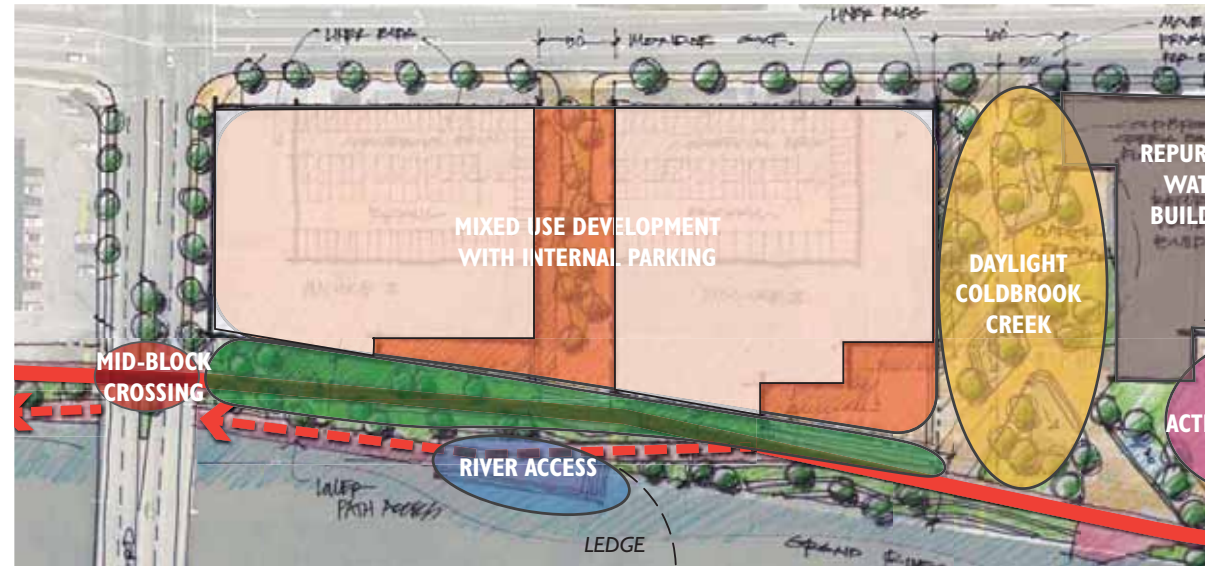
## BUILDING SCALE COMPARISON



38 COMMERCE



UICA BUILDING



## Heart of the River

balance of river + civic character  
 river events  
 festivals  
 unique outdoor programming  
 beach  
 touch the water



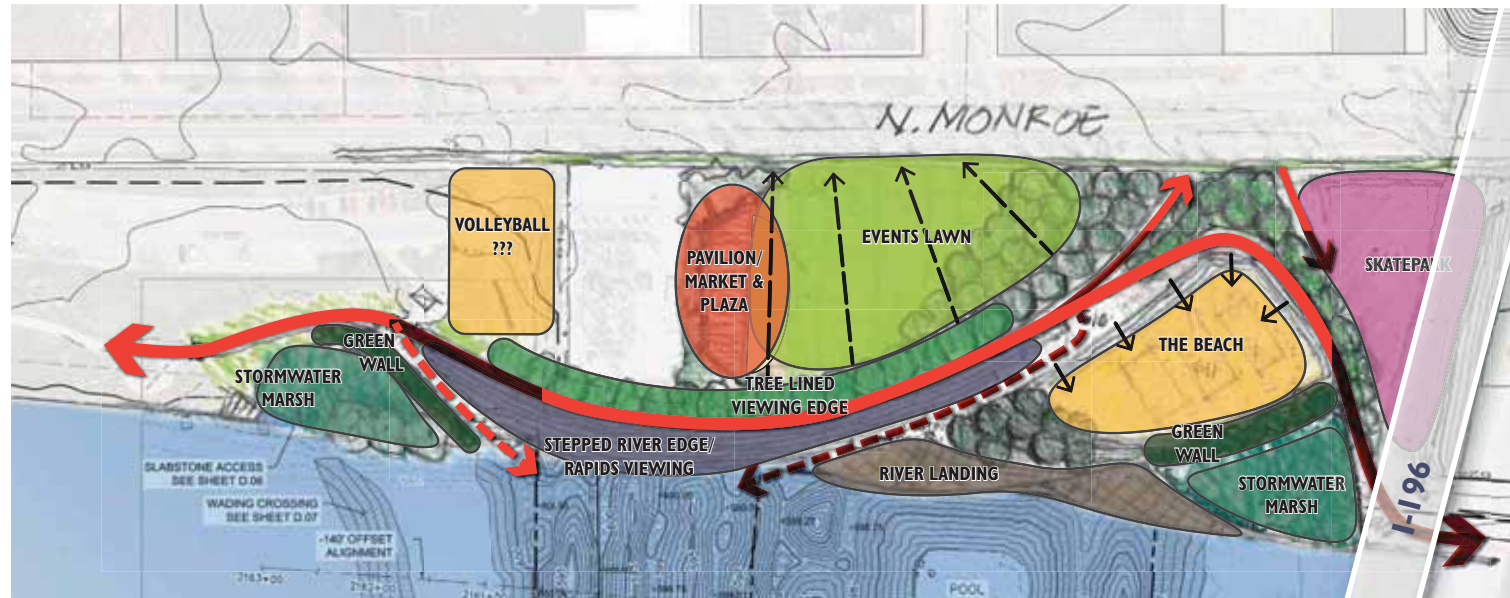


# Heart of the River - North Monroe

## Option #1

### » Site Programming

- Universal access to river
- Skate park
- 3 Sand volleyball courts
- Large multi-purpose plaza event space
- Beach
- Stormwater Marsh



Stormwater Marsh



Stepped River Edge / Rapids Viewing



River Landing



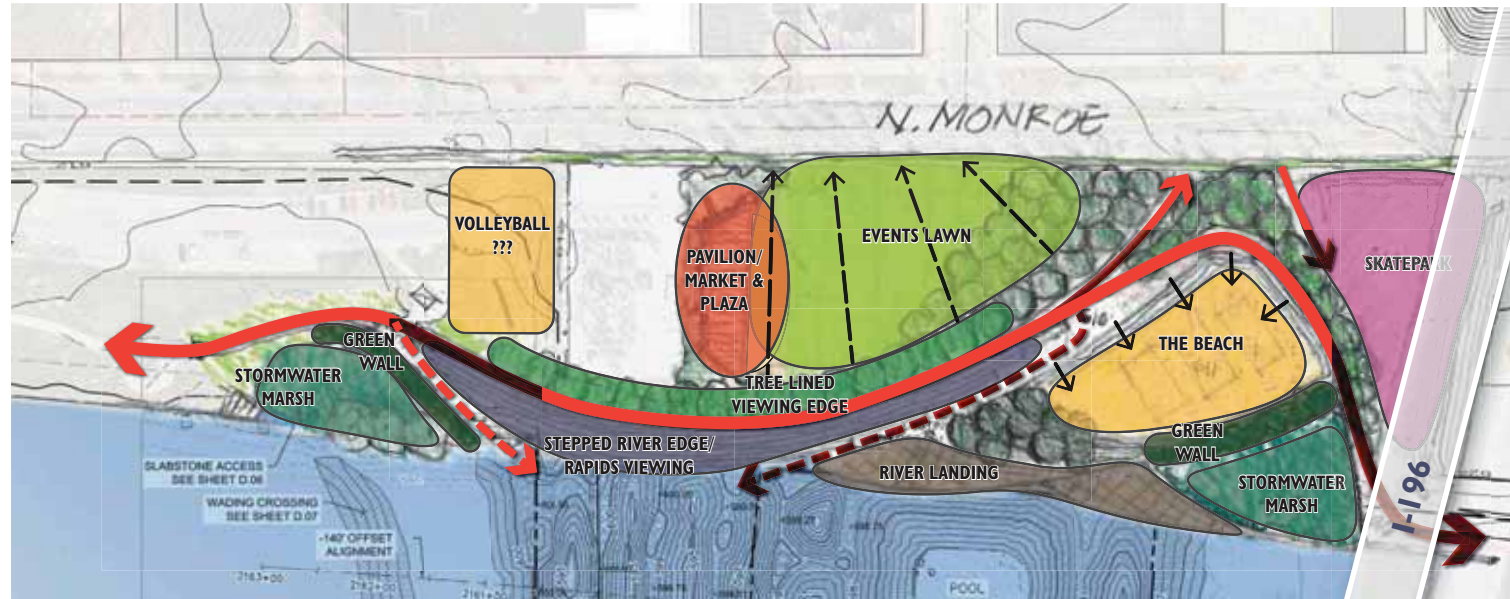
The Beach

# Heart of the River - North Monroe

## Option #1

### » Site Programming

- Universal access to river
- Skate park
- 3 Sand volleyball courts
- Large multi-purpose plaza event space
- Beach
- Stormwater Marsh



Viewing Edge



Sand Volleyball



Pavilion / Market & Plaza



Skatepark

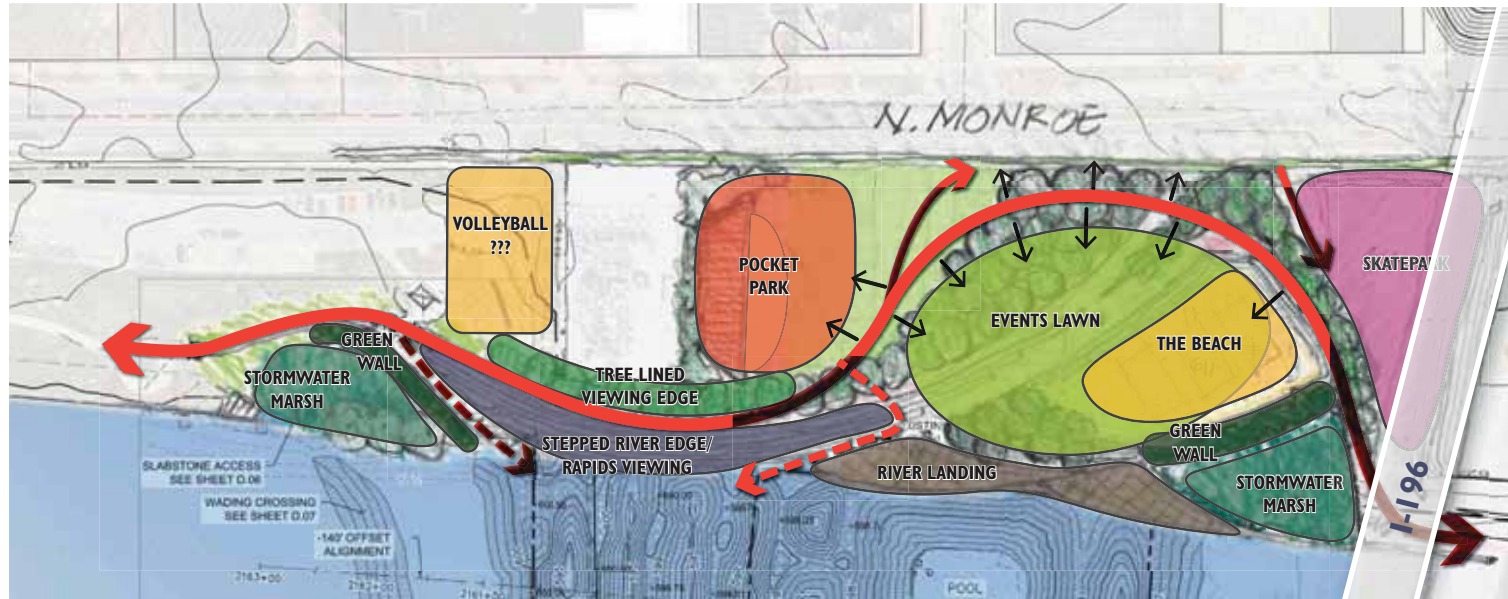


# Heart of the River - North Monroe

## Option #2

### » Site Programming

- Universal access to river
- Skate park
- 3 Sand volleyball courts
- Large multi-purpose plaza event space
- Beach
- Stormwater Marsh



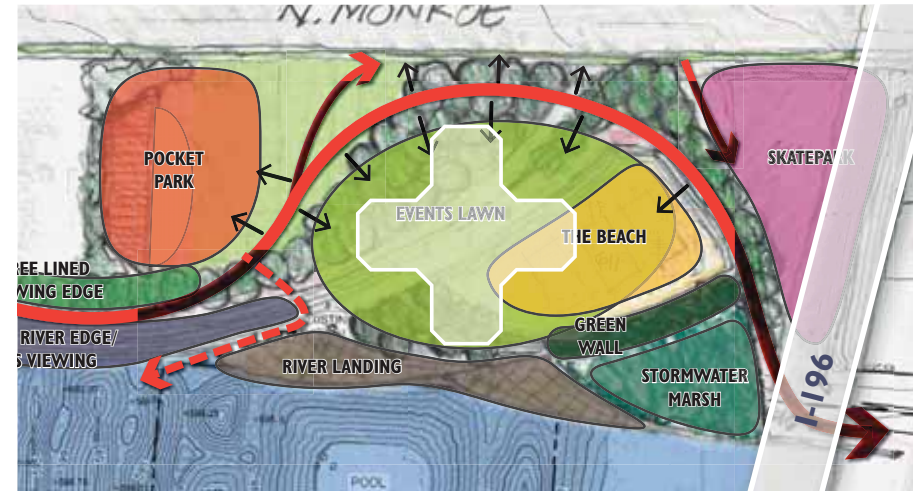
Pocket Park



Event Lawn

## Heart of the River - North Monroe

SCALE COMPARISONS -  
ROSA PARKS CIRCLE & THE EDDY EVENT SPACE



Rosa Parks Circle



Eddy Event Space





## Front Lawn

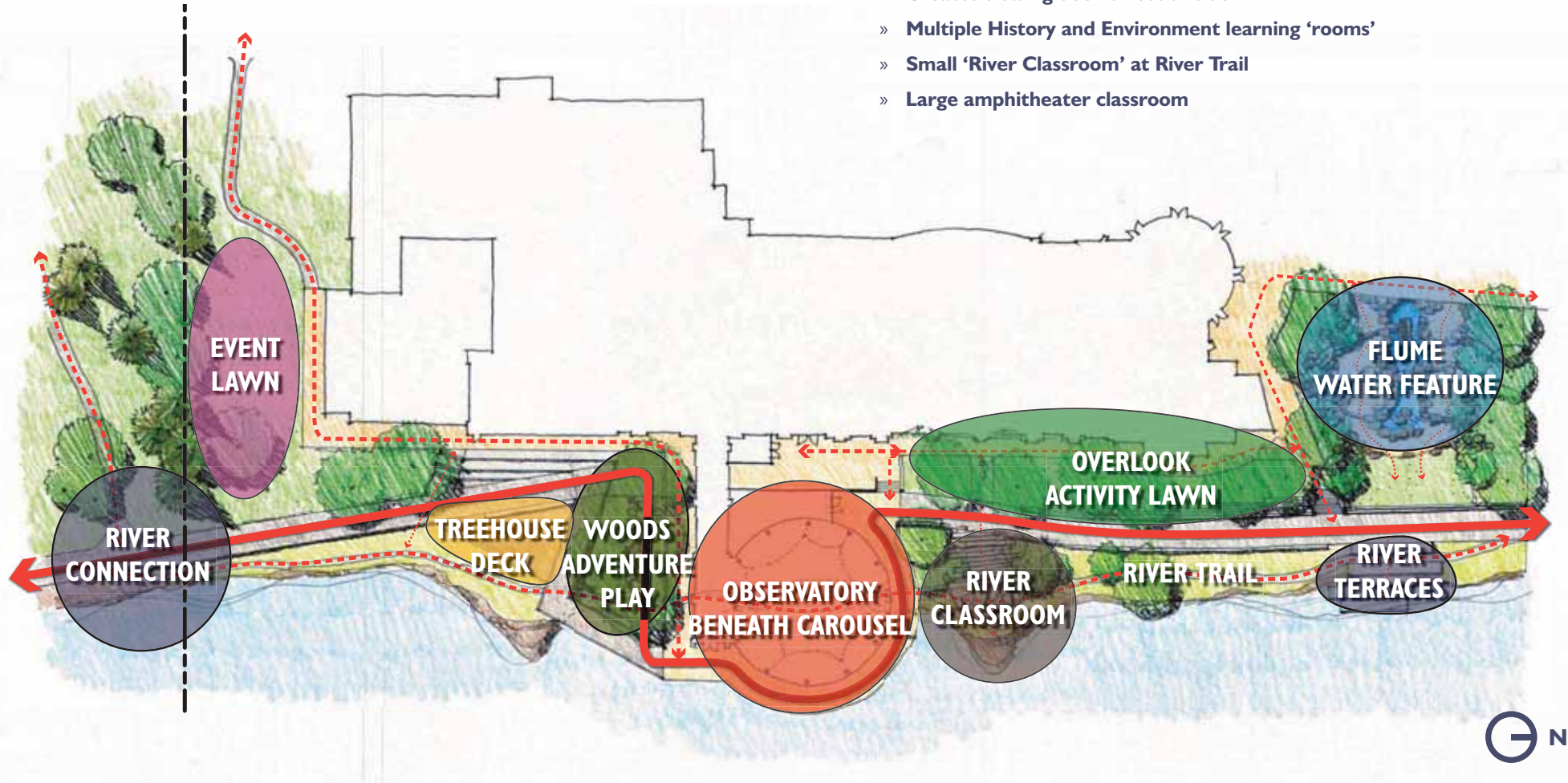
links a series of parks  
cultural district edge  
community/festival gathering  
outdoor education  
touch the water



## Front Lawn - Museum Site

### Current Option

- » Utilizes existing wall on north side of site
- » Creates viewing deck on south side
- » Multiple History and Environment learning 'rooms'
- » Small 'River Classroom' at River Trail
- » Large amphitheater classroom

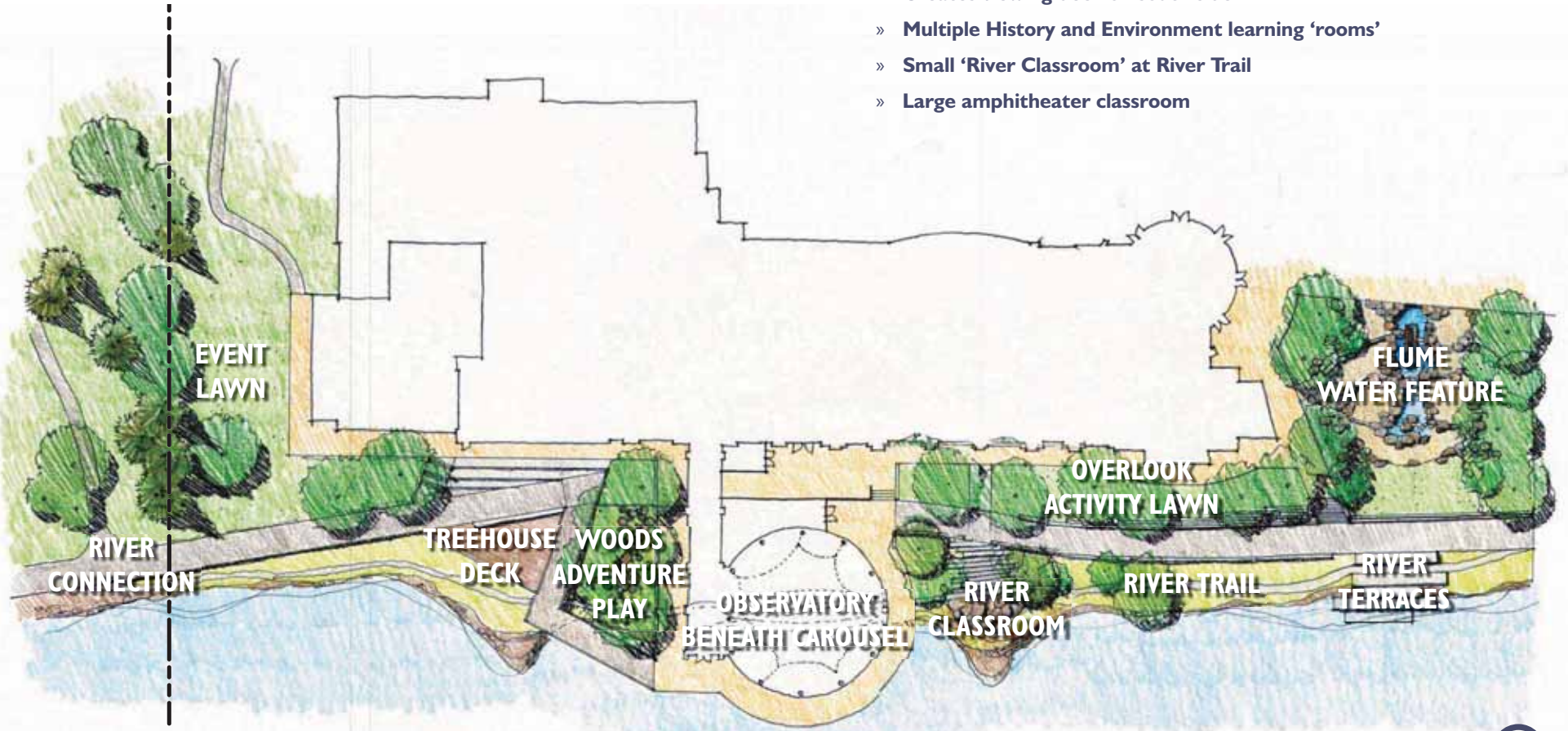




## Front Lawn - Museum Site

### Current Option

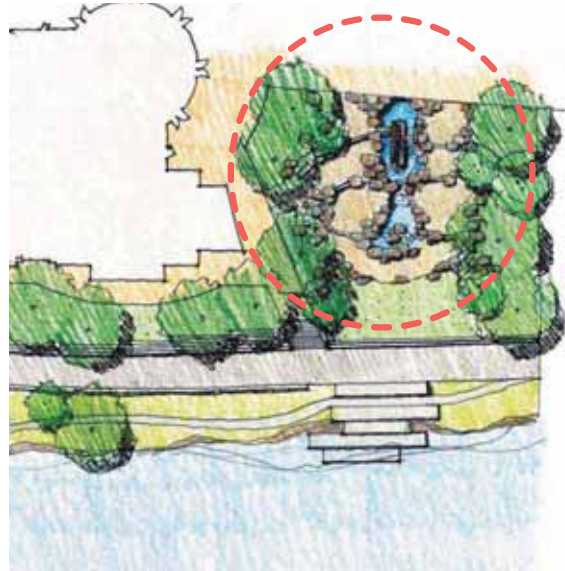
- » Utilizes existing wall on north side of site
- » Creates viewing deck on south side
- » Multiple History and Environment learning 'rooms'
- » Small 'River Classroom' at River Trail
- » Large amphitheater classroom



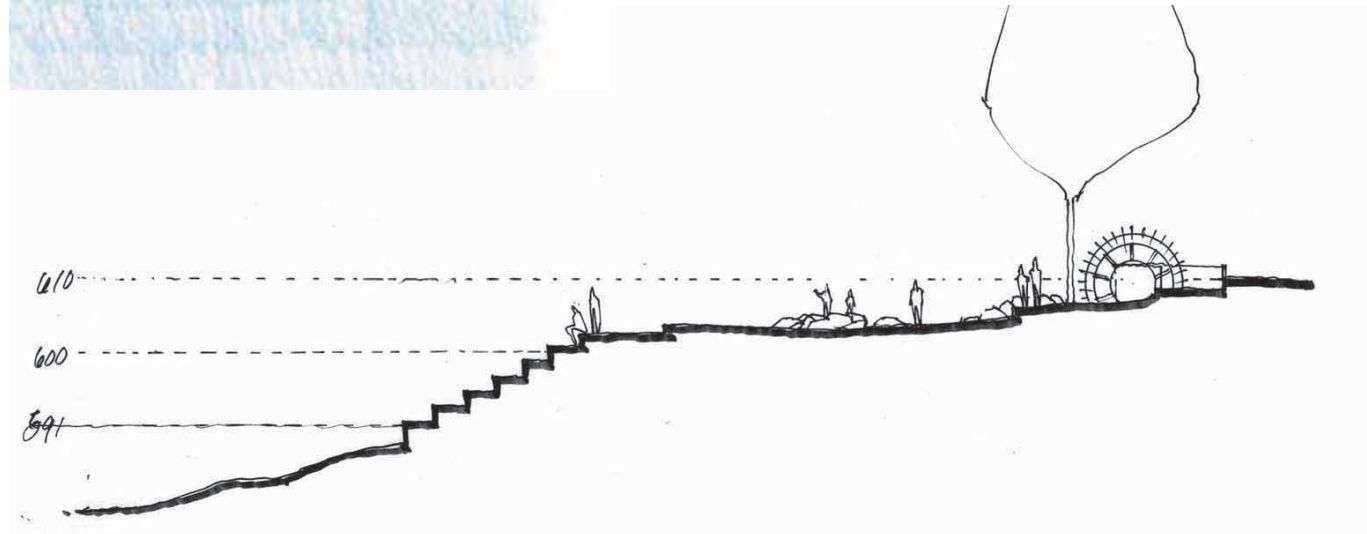
## Front Lawn - Museum Site

### FLUME

Water Feature

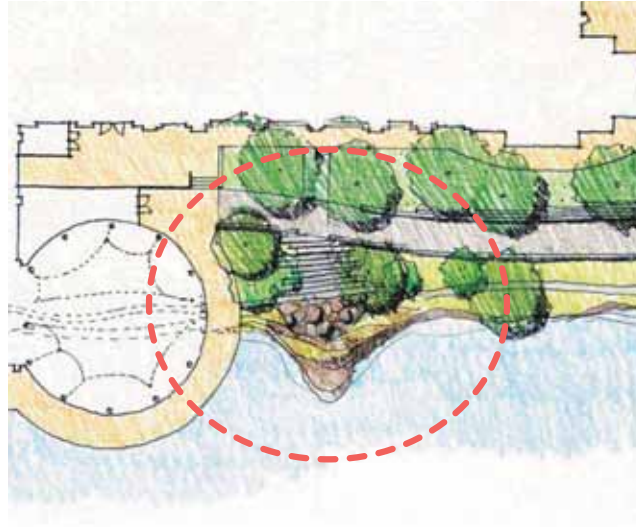


*Interactive water feature inspired by the historic Crescent Mill canal and flume*



## Front Lawn - Museum Site

### RIVER CLASSROOM



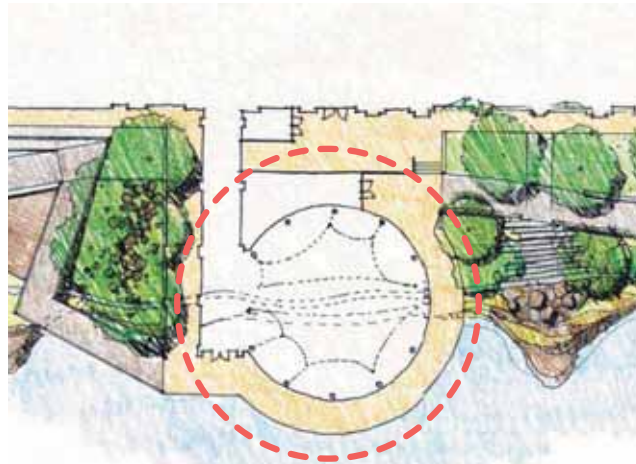
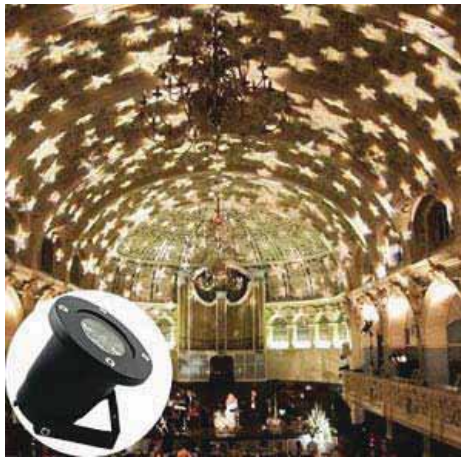
*Edible gardens are activated by outdoor kitchen classrooms and dining area*



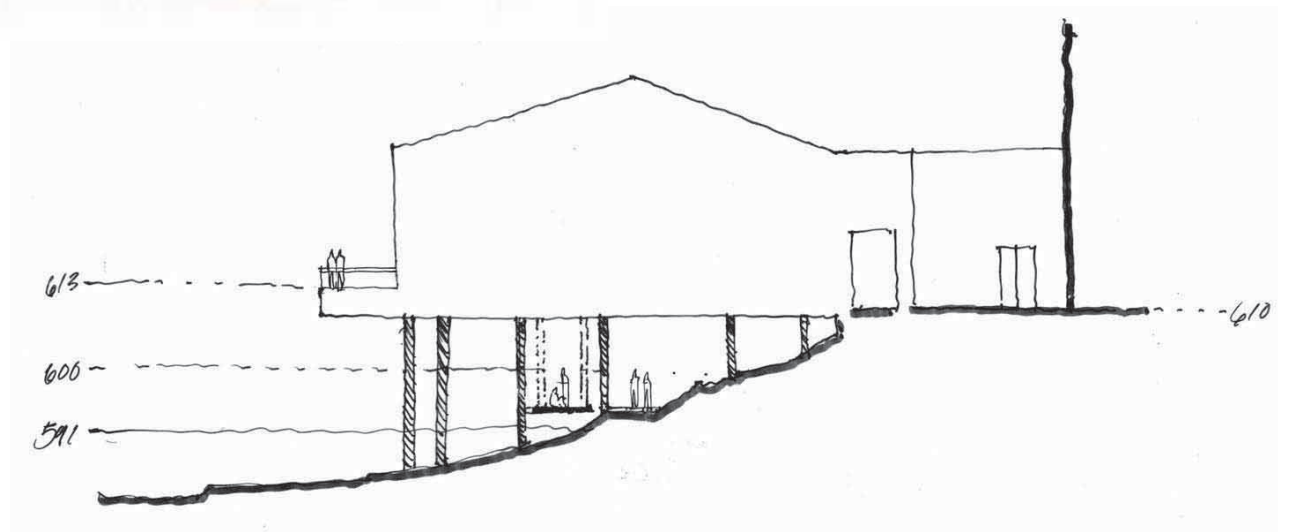
## Front Lawn - Museum Site

### OBSERVATORY

Beneath Carousel



*Suspended seating platforms and overhead astronomical projection display beneath carousel*

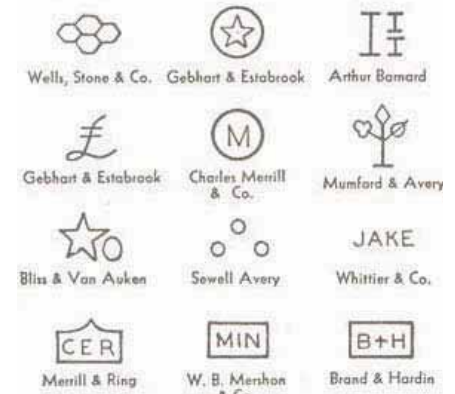
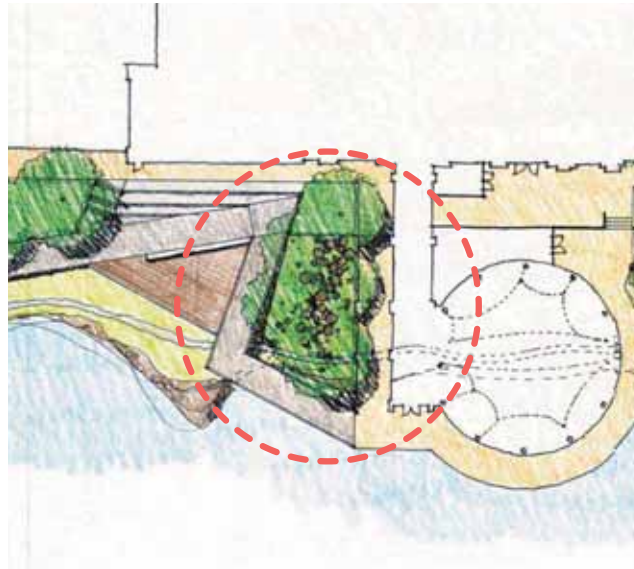




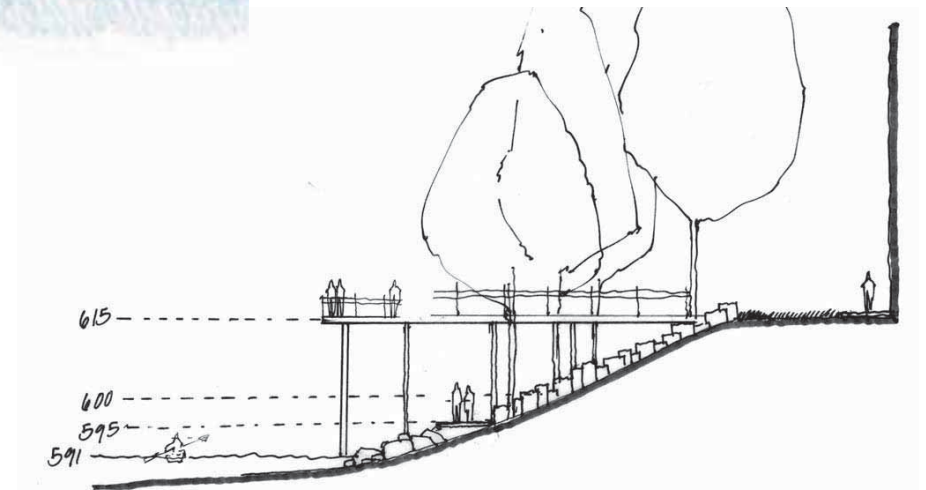
## Front Lawn - Museum Site

### WOODS

Adventure Play



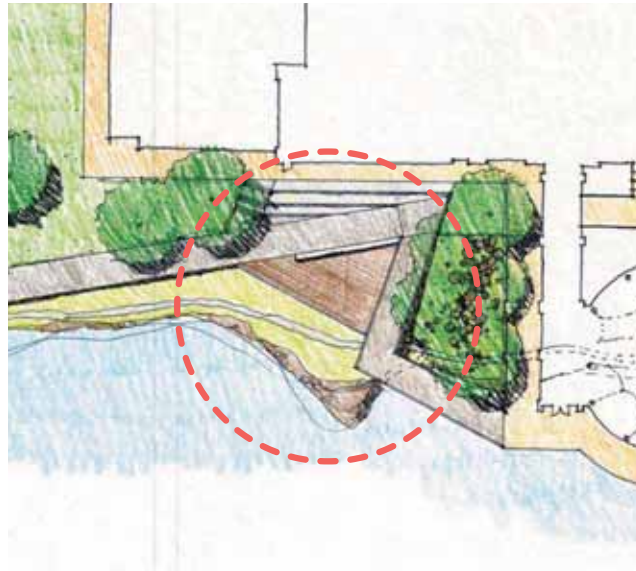
*Lumber-based learning area with logging stamp displays, play areas and living grove of trees*



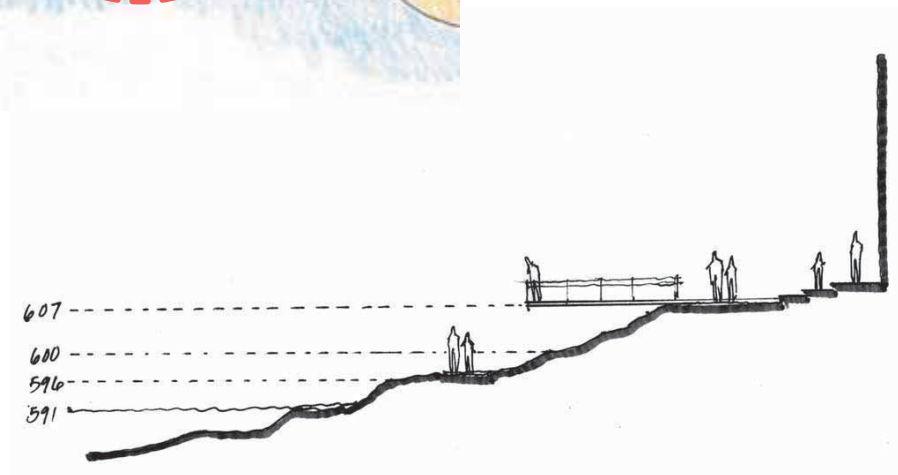
## Front Lawn - Museum Site

### TREEHOUSE

Deck



*Wooden deck Blue Bridge and river overlook  
for events, classes and lounging*



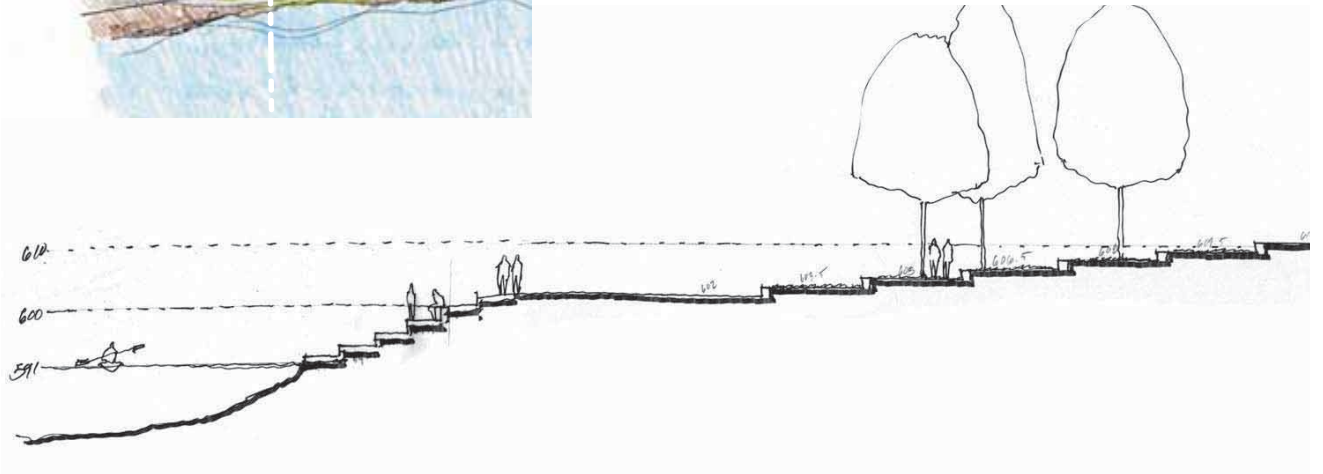
## Front Lawn - Museum Site

### AMPHITHEATER (POTENTIAL)

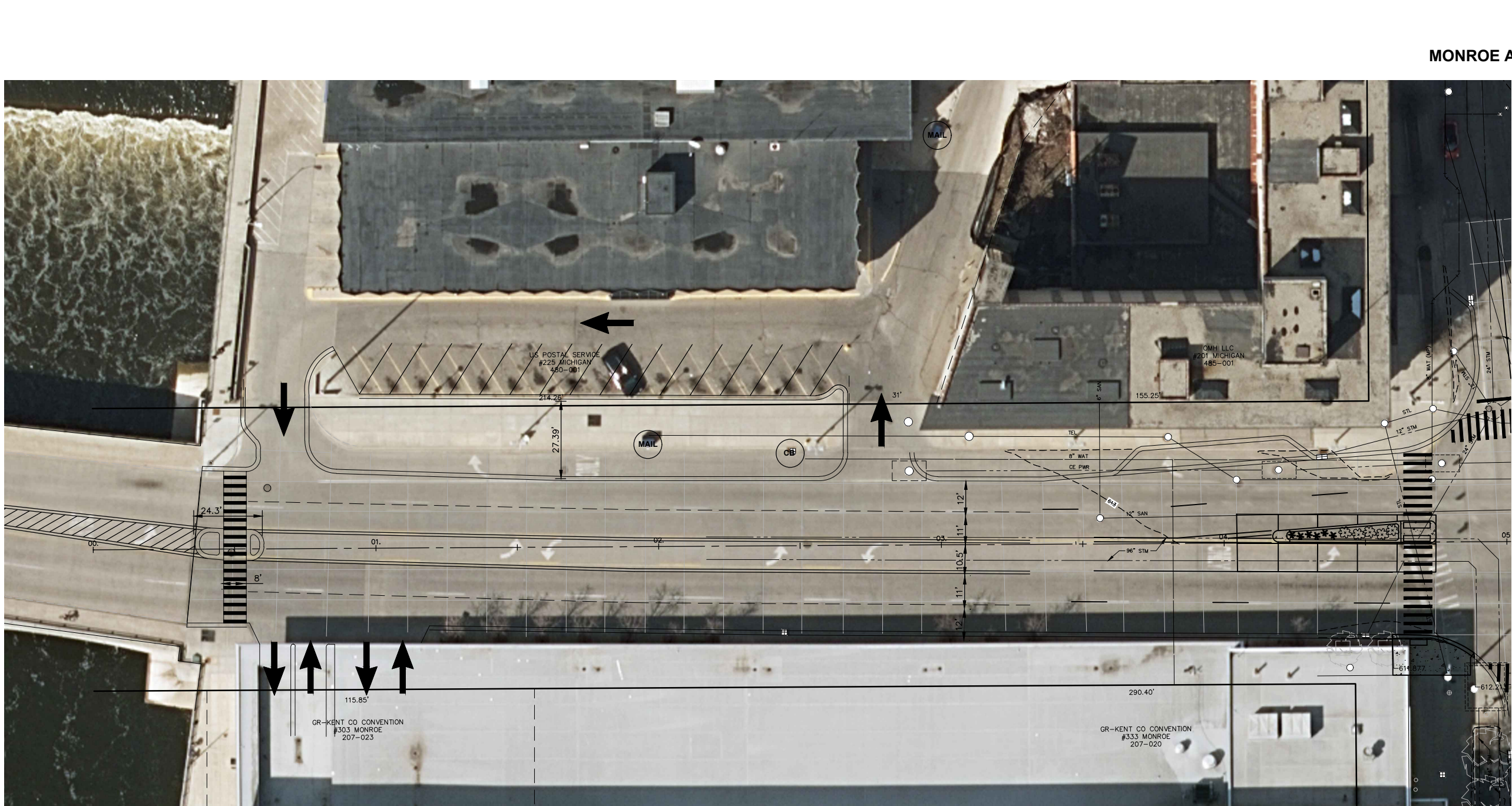
Classroom & Performance Space



*Terraced amphitheater and architectural relic display*







MONROE AVE.



SCALES  
PLAN: 1"=20'

PUBLIC  
PARKING

LOADING  
DOCK

RIVERWALK  
MICHIGAN CROSSING  
OPTION A

REV. NO.	DESCRIPTION
DESIGNED & SURVEYED BY:	fishbeck, thompson, carr & huber, inc. 1515 Arboretum Dr. SE Grand Rapids, Michigan 49546 phone (616)575-3824, fax (616)464-3996 engineers • scientists • architects • constructors
City of Grand Rapids Design, Development and Enterprise Services Engineering Department	
RECONSTRUCTION OF MICHIGAN STREET FROM THE GRAND RIVER TO MONROE AVE.	
Drawn by _____	GPF No. _____
Check: Field _____	Sheet No. <b>XX</b> of _____
Check: Office _____	



RIVER FOR ALL

## FOCUS GROUP - Meetings Series #1

### EXECUTIVE SUMMARY

Focus Group meetings are an important aspect of the River for All public engagement strategy as it provides an opportunity for various types of user groups and stakeholders to share design priorities in a small group session. The main topics discussed, from their various viewpoints, centered around access, programming, and landscape types.

#### ACCESS

Wayfinding. Both active users and residents agree accessibility in various contexts is crucial. Accessibility is manifested through wayfinding (including bi-lingual signs and signage that is iconic versus text heavy).

North/South Access. Sidewalks and street crossings designed for families with young children, and people biking and jogging.

Boat Access. Boat launches with handicap accessibility, and most importantly, a feeling of belonging for all who spend time along the corridor.

Trail Access. During certain times of the year, the Riverwalk becomes submerged preventing various types of users from interacting with the river during these times. An alternative design is crucial to access the river in all seasons.

Transit/Multi-modal Access. Public transportation and bike share aligned with east/west streets intersecting the river would provide increased accessibility for residents as well as visitors while also easing the need for parking.

#### PROGRAMMING

Programming should take advantage of current educational and historical resources along the river. Emphasis should be placed on providing inclusive opportunities for all age groups, particularly elderly and senior populations, and people with various ability levels.

#### LANDSCAPING

Landscapes should reflect the rich array of culture that Grand Rapids holds dear, especially underrepresented cultures that have been a vital part of Grand Rapids' unique character. These opportunities could be enhanced with venues that support food from local communities or art that represents different cultures and communities. Lighting is a necessity, but should be implemented tactfully, especially at low elevations and under bridges. Lighting should cater to non-motorized transportation as these users are most likely to contribute to active street life and patronize local businesses.

### FOCUS GROUP STAKEHOLDER: RIVER USERS– 11.13.17

#### IN ATTENDANCE:

Jeff Neumann (GR paddling), John Morrison (West Michigan Trails), Landon Bartley (GR Rowing), Elyse Mathos (Boys & Girls Club of GR), Mike Gunsmiler (West Michigan Sports), Ginnie Smith (City of Grand Rapids)

#### ACCESS

- Desire for high-level accessibility when the river levels are high

- High water levels are favorable for boaters and aquatic wildlife but less so for pedestrians using the Riverwalk.
  - *How do we create a space both on land and in the water that will welcome all users?*
- Both high and low water levels are necessary for access to enjoy the various types of activities the river is used for.
  - Low access is not conducive in winter.
  - Lighting concerns along the east side of the river.
  - Riverwalk is narrow for bicycle use; can conflict with pedestrian use.
- Elevation of trail will dictate types of uses, activities, and safety concerns.
  - Higher elevation trail may incorporate commercial activities.
  - Lower trail likely temporary due to fluctuating water levels and incur further safety concerns due to limited lighting.
- Access needed underneath Fulton Street bridge as well as additional points of access south of Fulton Street.
- Separate walks for fishermen and walking and biking is desired for comfort and accessibility (soft/hard surfaces – gravel/cement)
- Connect Kent Trails to pathway for comprehensive systems.
- Whatever we can do to not stop at cross streets while running or walking, can there be an actuated lighting system that stops vehicles as bikers or runners approach?
- Cutting down on automobile traffic is crucial; place lights which can be user-activated. Lyon Square is a central meeting spot which benefits from limited automobile encroachment.

## PROGRAMMING

- Multigenerational programming is needed; particularly walking and education.
- Expand education opportunities at the public museum, Coldbrook site, Riverside Park, and Fish Ladder – all are education opportunities
- Go from boat to business near former Baker Furniture, and at 6<sup>th</sup> Street Park.
  - Example: kayak brewery tours in Traverse City
- Volleyball on a potential beach near downtown.
- Punk Island- accessible, great views, its connection and use can be similar to a seasonal road.
- Veterans facility by Riverside Park- bring older adults into the space
- Not every space needs to be active all year; seasonal uses are acceptable
- Open water swimming is desired. Need to repeal no-swimming ordinance.
  - Is scuba diving an option?
- Could there be an “ArtPrize” designated space where artists that could rotate. Maybe all art materials would have to be inspired by found materials.



## LANDSCAPE TYPES

- Lighting is important to preserve or create a feeling of safety along the river, especially at low points and under bridges.
- 6<sup>th</sup> Street Park and murals should be preserved and more abundant.
- Westside has rich cultural history – polish neighborhoods. Consider how the project can incorporate the look, style, and identity of those communities.
- Consider natural terraces as an edge type. (i.e. cut down the wall and terrace back with native vegetation planted benches)
- Is there a place where there could be sturgeon viewing/windows behind the walls?
- Native vegetation could break up the concrete walls. More habitat for insects, birds.
- Filtering wetlands / riparian edge treatments were well liked
- More trees along the corridor, especially deciduous trees
- Make it unique and not everything the same. Grand Rapids needs character (ex. Savannah, GA)
- Consider signage for how adaptive reuse elements were inspired (i.e. history of the past) and create educational opportunities.

## FOCUS GROUP STAKEHOLDER: NEIGHBORHOOD & NATURAL AREAS – 11.14.17

### IN ATTENDANCE:

Matt Roy, Rachel Posthumus, Aaron Bodbyl-Mash, Stacy Stout, Steve Moreno, Carrie Rivette, Wendy Ogilvie, Joe Sulak, Rachell Nagorsen, Stephanie Adams, Gail Hefner, Elaine Serrett Isely, Ada Mbonu, Kyle Heys, Jim Davis, Stephanie Wong, Diedre Deering, Stephanie Ogren

### ACCESS

- Currently, there is a 2.5-3 mile stretch between kayak launch points; need more options for getting in/out of the river, especially downtown near restaurants or public spaces (ex. Lyon Square)
- Consider how we connect via land and water to Lake Michigan/Grand Haven
- Ottawa County and Kent County regional trail system and connection- walk, bike, paddling.
- With respect to the Westside connection:
  - o *Economic* - River should be inviting and comfortable for those who don't want to or don't have the means to do extreme sports.
    - It should feel like a casual setting, where you don't need to be dressed up to feel like you belong
    - Natural play features instead of playgrounds
    - Sports like volleyball could be considered
    - These should all strive to have a community engagement component
  - o *Handicap access*- boat launch access, elderly, wheelchair; safety precautions.
- Signage with at least two languages. Tie these into branding as well to create uniformity to contribute to accessibility.
- Signs like "2 minute walk to the Grand River/River Walk"
- Connecting corridors from parks (John ball, Garfield) complete with safe crossings (especially Fulton)
- Sidewalks should have enough room for walking many large dogs, seniors, and speed walkers
  - o More path options, high and low, and various pavement types
  - o Ann-Leonard bridges and sidewalks need this in order to be pedestrian friendly
- Rearranging bus routes along river would create an incentive to ride the bus; welcoming for visitors as well to decrease vehicles downtown.
- Potential to get off the "river" connection
- Possibility of boat launch from Fish Ladder up to Leonard; in general need more public boat launches

- Connectivity issue with getting out and going back in.
- Butterworth to Wealthy – greenways connections; “very important”
- Everyone has to turn around and face the river
- Consider speed of flows-blue way signs within the river that boaters see
  - o Something painted on the walls too
- Dog spaces – not parks, but make trails etc., a welcoming space for dogs and dog owners
- Lane marks on walking routes/pathways
- Gender neutral restrooms; clean spaces

## PROGRAMMING

- Utilizing organizations like scout troops, church groups, and even university students studying urban planning for volunteering opportunities to help with asset management; many learning opportunities along the river.
- Play elements – Ice skating ribbons as a trail system.
  - o More winter activities in general
- Boulder parks- play structures 12’ height is the max.
  - o Boulder maze (bouldering), this can be a transition use, place it next to utility corridors or sub stations
- Events:
  - o Winter public venues - gazebos, equipment for winter lodge, boat house
  - o Lighting – unique light features with up and down lighting, shadows, etc.
  - o Ah-Nab-Awan park stages, pop up events, plays, multi-purpose by day or night, celebrate and protest
- More winter sports on west side; riverside ice trail
- Fat tire bikes, cross country, ice fish in river or overlooks to view fish in winter
- Duck race, polar plunge, shade (in the form of access/event fundraiser)
- Dog park-walk area with a vegetated buffer
  - o Consider people downstream
  - o Get dogs down to water
  - o Should this be/is this designated for dogs?
- Need amenities on both sides of the river:
  - o Viewpoints on Westside.
  - o Basketball court?
  - o What can we do to break up west side walls? Green walls/ivy?
  - o Flexible space for festivals and concerts. Design for electrical options.
- Westside: picnic areas, basketball, art and culture.
- Public art in many forms. Year around. This should be an intentional space, not an afterthought.

## LANDSCAPE TYPES

- Naturalize the walls
- Winter west- sledding. Is there a safer location near the river corridor? Invite them in
- Four season activation
- Instead of “eyes on the street” philosophy, we should work towards “eyes on the river” with hotel guests looking down, and constant awareness and safety
- Punk island- great potential
- Curious/need more info re: water quality, perception is negative- need more marketing and public relations around that

- Speed and safety is also a concern; floating vs. river flow
- Butterworth as a natural area to keep
- Cut back Leonard to Ann to see more of the river
- Natural habitat and edges at Ah-Nab-Awen Park; Punk Island, Devos place
- More trees, especially in North Monroe
- More turf at North Monroe and the museum, like in Ah-Nab-Awen Park
- Riverside- Do lagoons freeze over? Skating trail for a seasonal program
- Honor First People though intentional landscape treatments
  - o Honor indigenous plants
  - o Ceremonial places
- Place for kids to get to water safely; wetland area for kids (next to trail walkway)
- Environmental injustice downstream is cared for (i.e., Plaster Creek water quality levels)
- Connect with the following organizations:
  - o Grand Valley training
  - o Ownerships
  - o GVSU
  - o Bicycle factory?
  - o Consumers building? How are they reusing it?
- Parking on west side
- Landforms to create buffers
- Farmer's market's on the west side could incorporate foods that represent various ethnic groups
  - o Cactus
  - o Collard greens

## FOCUS GROUP STAKEHOLDER: CULTURE, EDUCATION, HISTORY, TOURISM, AND ECONOMIC DEVELOPMENT – 12.14.17

### IN ATTENDANCE:

Jim Winslow, Miranda Krajniak, Andy Johnson, Eddie Tadlock, Richard App, Jill Vyn, Dana Friis-Hansen, Kate Moore, Tripp Frey, Joe Becherer, Ron Yob, Mike Posthumus, Jamiel Robinson, Asante Cain, Kevin Buist, John Helmholtz, Tim Mroz, Trudy Ngo-Brown, Marla Ehlers, Todd Herring, Tommy Allen, Rich App, Christopher Smit

### ACCESS

- Community engagement with GR Forward was great. Leverage this momentum.
- Importance of connecting public transportation to the opportunity site, consider DASH. Also consider how to allow kayaks and other water activity equipment on buses
- Leonard doesn't feel safe to cross
  - o More midblock crossings are necessary
- Butterworth could be used as a front door or gateway
  - o Open up Butterworth landfill site to car access
- Floating classroom to get into river
- GVSU and Ford Museum creates a barrier for accessing the river from the Westside
- Visually impaired wayfinding in sidewalk material would benefit those intentional users, but also pushes pedestrians forward
  - o Sensory experiences for cross disability accessibility
- Public restrooms that are single-use/multi-gendered/family restrooms



- Natural playgrounds with safe waterfalls would provide safe emersion of all ages.
- The river is already accessible for fishing, kayaking, boating, wading, and rowing, but is not accessible for swimming, children, and seniors. These are the groups we should focus on when updating the river.
- Marinas on high and low levels of the river walk
- Displacement of homeless is something to address.

## PROGRAMMING

- Rentable social spaces for small parties with grill and electricity
  - o Fun for others to see birthday parties, spread diversity, and a higher level of community.
  - o 4 Season shelter like the "Fallsburg Park" shelter
  - o Kitchen for catering
- Curling-winter west
- Fire pits
- Drum circles
- Need to have maps and information about float times based on water levels...30 min, 1 hour, 2 hour, various increments.
- Jogging trail should have work out areas along the trail
- Swimming lanes in the side of the river or riverside swimming area
  - o Multi-level so kids can play
- Sports along the River
  - o Intermural Kickball
  - o Leagues and constant games
  - o Recreation and health
  - o Broomball in Rosa Parks on Tuesday nights
  - o Disk golf
- Amenity centers with different kinds of retail and meeting spots
- Final locations for bike share stations
- Go beyond interpretative/historical markers
- Cross country ski trail should have a track system year round in order to be maintained during light winters instead of grooming one over grass only to be melted weeks later
  - o Riverside park would be a good location for this
- Playgrounds for all four seasons
- Mini marinas for ship to shore transportation
- Could the river be dredged to accommodate boats with a stronger draft from Grand Haven?
  - o Opportunities for pleasure craft owners to dock
- Focus on wildlife like sturgeon, but do not portray it with a "Disney-esque"
  - o Support national park mentality
  - o DNR adventure center. Belle Isle as an example
- Have several beach locations, one on each side of the river.
- The Grand Rapids Public Library needs more outdoor space to hold 20-30 school kids for things like Shakespeare in the Park with a sound system, and Wi-Fi
- Kids programming such as a mini stream, teaching how to log, and furniture history- anything to get people in and on the river.
- Every 8th grader canoes on the river each year, this is a good opportunity for learning and programming
- WLAV used to do raft races. We could revive this to shed light on recent Grand Rapids history. Many of the older residents remember this and would come out to watch them again. This is a very approachable and inexpensive way to use the river.

- o These events stopped due to unsafe conditions. They could be brought back safer conditions.
- Symphony picnic pops and Rosa Parks band at the river
- Look to Clyde Warren Park in Dallas, TX for successful programming
- School curriculum can be utilized along the river; leaf identification in forested areas, for example. This can also incorporate an outdoor rotating exhibit at the GRPM
  - o Possibly even a water classroom
- Uncover native uses along the river, example is the Plum orchard at the Butterworth site
  - o Plum orchard healing circles on Westside
- Trails should be open year round

## LANDSCAPE TYPE

- Highlight different habitat and incorporate cultures that depend on them
  - o North of Leonard has Osprey and Blue Heron
- Small neighborhood markets
- Unveiling of creeks to display water system
- There should be a uniformity of art
- Public art isn't permanent, needs to change
  - o Installations could be up for a year
- Native play-Vancouver, for example
- Formal and informal landscapes/manicured and native-whimsical
  - o Un-pave and no concrete
  - o Soften the landscape
- Urban/community garden
  - o Butterworth area for an opportunity for a pollinator garden and community garden
- Connect tributaries
- Incorporate as many plants that keep mosquitos away!
- Only add lights that don't attract bugs.
  - o The Gillett Bridge is filled with bugs due to lighting
- Ensure an equal balance of sun and shade

## OTHER IMPORTANT ISSUES

- Contact and add to focus group- Bing Goei
  - o Center for New Americans
  - o Butterworth
  - o Asian community
- Need to have conversations with people who are living there, like the homeless population
- What's being planned at the Coke plant and zoo?
- When this is built, hire local
- With creative designs should come creative funding. Provide many funding gatherings to help with brainstorming when the time comes
- Land Conservancy of West Michigan (located on Ann Street) could be a funding partner on storm water (Contact [justin@naturenearby.org](mailto:justin@naturenearby.org))
- Get kid's ideas and feedback. Their imagination can generate great ideas.
- Land and land use spiritual/emotional/physical connections
  - o Ancestral history
- Contact Dave Warner from Plaster Creek Stewards from Calvin College

