

# AGENDA



## GOAL 1 ALLIANCE

### Board Members:

Richard Bishop • Laura Cleypool • Rick DeVries • Joe Elliot • Lindsey Gadbois •  
Rachel Hood • Tom Hoving • Rob Hyde • Janet Korn • Ted Lott • Traci Montgomery •  
Mary Roys • Jay Steffen • Eddie Tadlock • Ben Weatherhead • Rick Winn •

---

October 18, 2017

10:00a – 11:30p

29 Pearl Street, NW Suite #1

1. Call to Order
2. Introductions (5 min)
3. Grand Rapids White Water Presentation and Discussion (20 min)
4. River Design Guidelines Activity and Discussion (40 min)
5. FY18 Project Overview (10 min)
6. Alliance Member Discussion (10 min)
7. Next Meeting – January 17, 2018
8. Public Comment
9. Adjournment





**RIVER FOR ALL**

# **The Grand River Corridor Implementation Plan and River Trail Design Guidelines**

**Advisory Group Meeting #1  
October 13, 2017**

**Consultant Team:**

Wenk Associates - VIRIDIS Design Group - Williams & Works  
ETM Associates, LLC - Fishbeck, Thompson, Carr and Huber

# Goals

**Integrate the River Restoration and GRForward Plans.**

**Design a River for ALL.**

**Design for a healthier, cleaner River** with functioning natural processes.

**Design better connections and access** between River and City.

# Critical factors for project success

Provide specific direction for **high quality, cost effective design** that integrates with the objectives of the river restoration efforts.

Use Asset Management to develop a **clear strategy for long-term maintenance, management, and stewardship.**

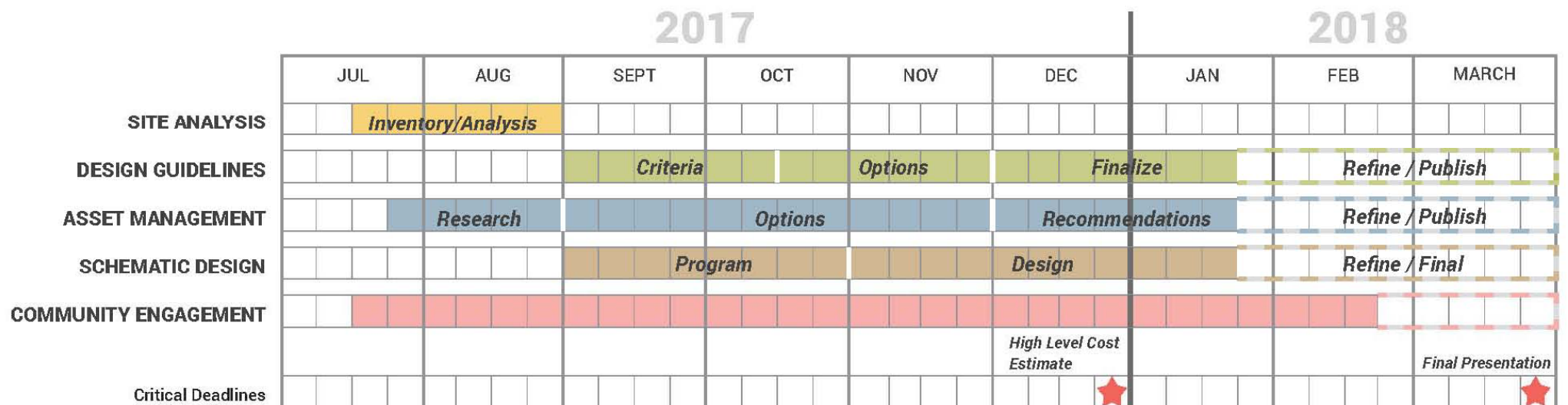
# Critical factors for project success

Develop a strategic approach to better align **construction efficiencies between the River restoration efforts and public redevelopment** on opportunity sites.

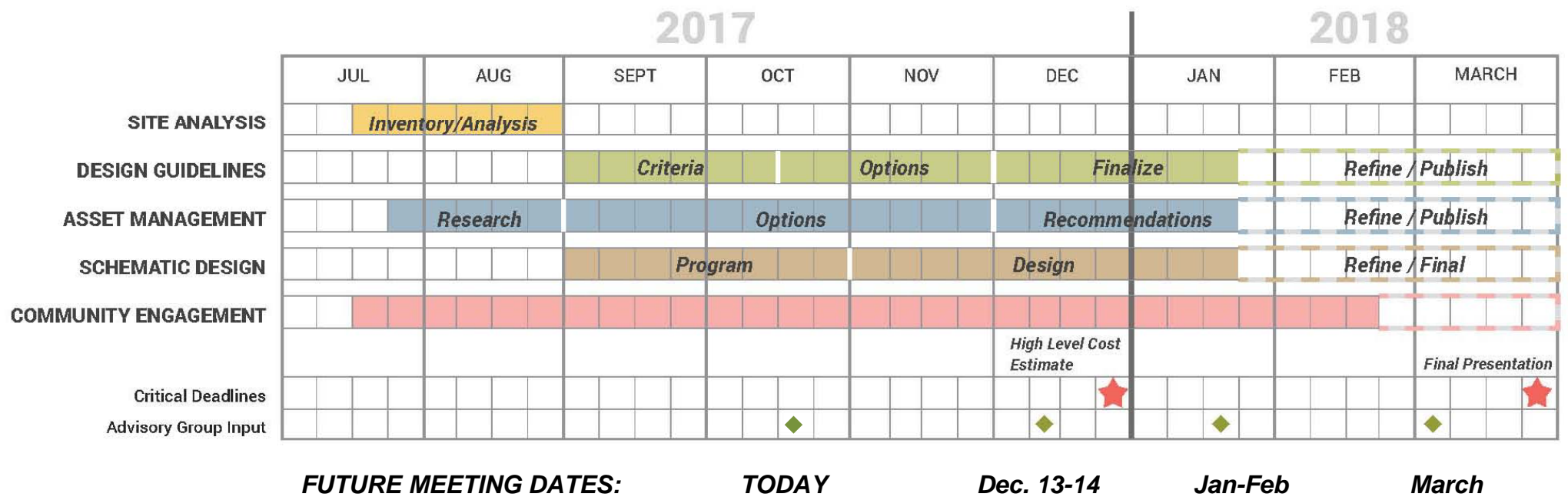
Create schematic designs that support the **permitting of the River restoration project**.

Position the City for **potential local, state and federal grant opportunities**.

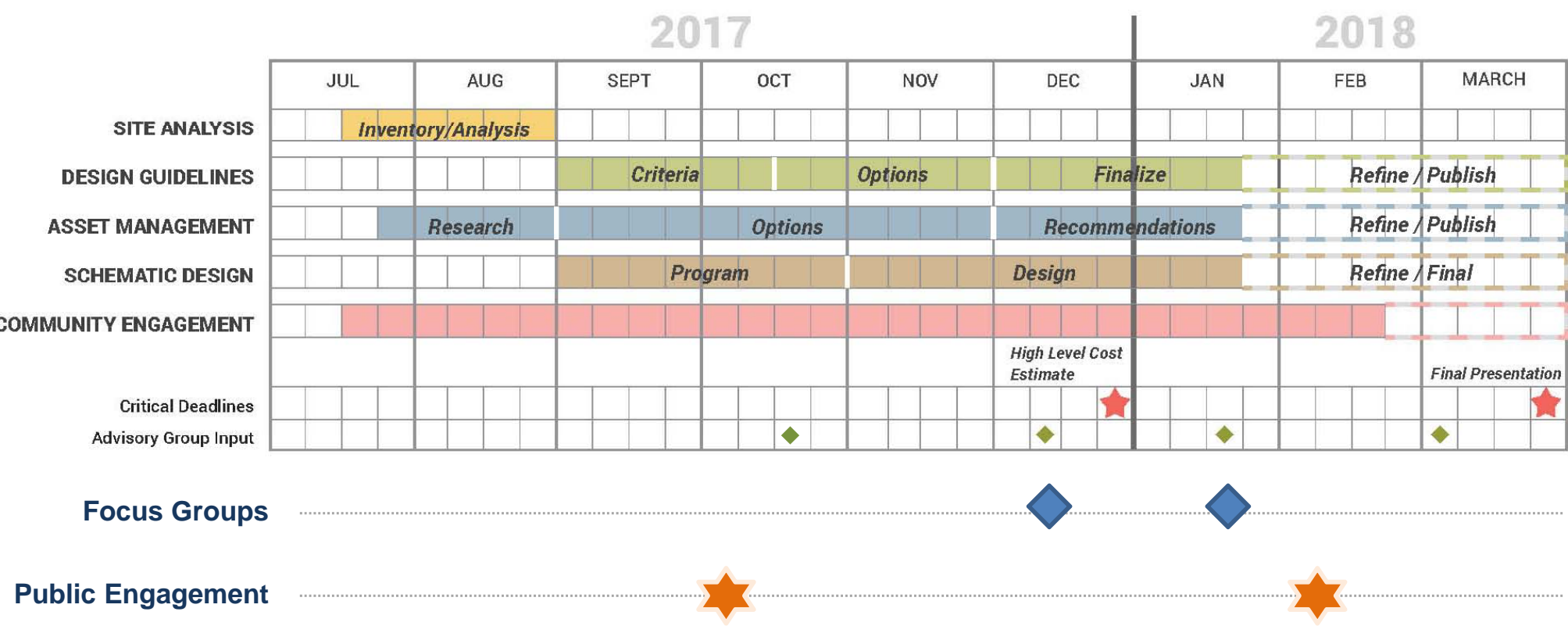
# Schedule



# Advisory Group Input



# Focus Groups & Future Public Engagement



# Focus Groups

Art

Culture, Education, & History

Natural Resources

User Groups

Tourism & Economic Development

Neighborhood & Community

Riverfront Property Owners

Indigenous People

Foundations

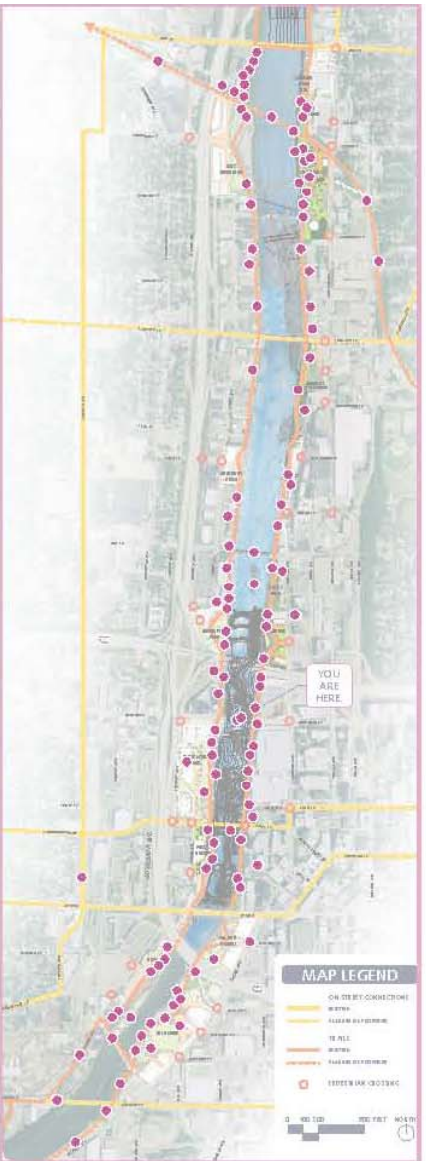
# **What We've Learned**

*Engagement - Continuing the Momentum*

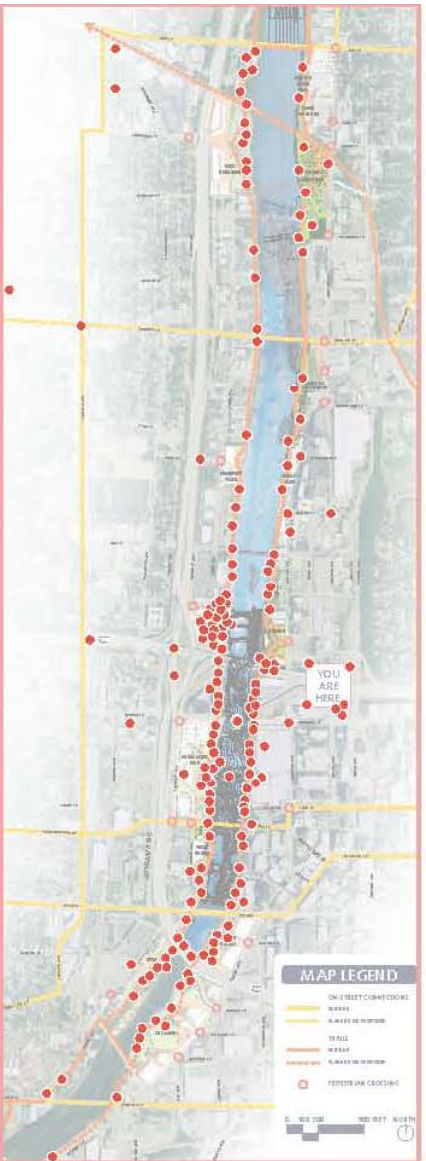
# Bridge Street Bridge Experiential Engagement



## ADAPTIVE REUSE



## URBAN

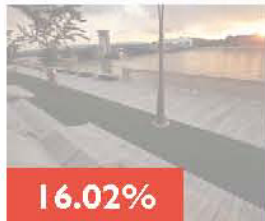


## NATURAL





## NATURAL



## URBAN



## ADAPTIVE REUSE

# **What We've Learned**

*Inventory + Analysis of River Corridor*

# History



ABOVE: "Number 789" Side Chair, made by Baker Furniture, Inc. ca. 1933. This same style of chair has remained in continuous production for more than six decades.



# Findings

## UNACCEPTABLE



Inaccessible lawn because of rail. Strategically use tall fescue mix to limit maintenance to larger less frequent events, safety or aesthetics. Steep slope hard to maintain with mower.

## WORKS BUT COULD BE IMPROVED



Turf should be limited to dedicated, usable play, seating or program areas. Buffers should utilize locally-adapted species with additional trees to provide some shade.



Native understory provides dense vegetation. Needs selective clearing to provide higher visibility and views of river. Discuss skill set of city's staff in identifying natives, invasive species.

## ACCEPTABLE



Low ground cover on slopes is ideal. Introduce native and drought tolerant plants to minimize irrigation and promote biodiversity and increased slope protection.



Low growing vegetation preserves views to river, helps stabilize bank, and provides habitat.



Understory allows for greater visibility to river.



Findings	Potential Implementation Strategies
Lack of the river's natural qualities along Downtown corridor.	Plan for green/soft pockets that reflect the natural qualities of the river and break up long urban stretches in the Downtown area.
Poor or difficult park maintenance.	Design and select plant material to limit difficult maintenance situations.
Lack of strategic views of and across the river.	Preserve/create views by using low growing vegetation at the edge of the river, which also helps stabilize the bank and provides habitat, and avoid sheer walls or tall fences.
Long expanses of wall along the river.	Vary edge types and treatments/textures along floodwalls to enhance visual interest, and where possible add overlooks, cantilevered walks, and other usable spaces.





Findings	Potential Implementation Strategies
Few recreation, leisure, or events areas available to help activate the corridor.	Design to accommodate varied levels of use and activities in designated areas, and anticipate future change.
Lack of accessible access	Provide and design for accessible access to the river where appropriate.
Poor access and visibility.	Enhance lighting and create clear views along trails, and provide safety features to slow traffic at trail crossings.





Findings	Potential Implementation Strategies
Poor condition of site furnishings and site elements.	Choose the most appropriate materials and furnishings for existing site conditions and maintenance operations.
Lack of covered shelter.	Provide both large and small covered gathering places, and provide shade in various forms.





Findings	Potential Implementation Strategies
Lack of cultural, visual, or physical identity.	Create a system that creates the vision of the city with visual continuity but also allows for variety by District.
Poor physical and visual connections to adjacent destinations along the river.	Create consistency in wayfinding and branding along the corridor.



# Planning Progress to Date

# Built on past planning efforts

*GR Forward  
River Restoration Plan*



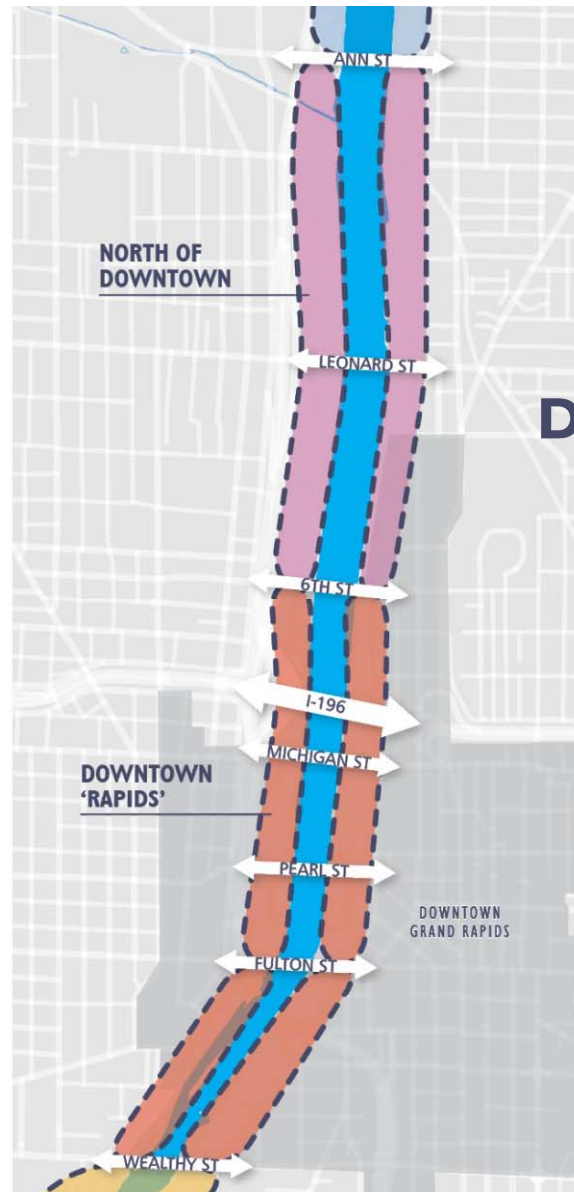
# Built on past planning efforts

GR Forward  
River Restoration Plan  
Parks & Recreation  
Vital Streets  
Regional Trails &  
Millennium Park



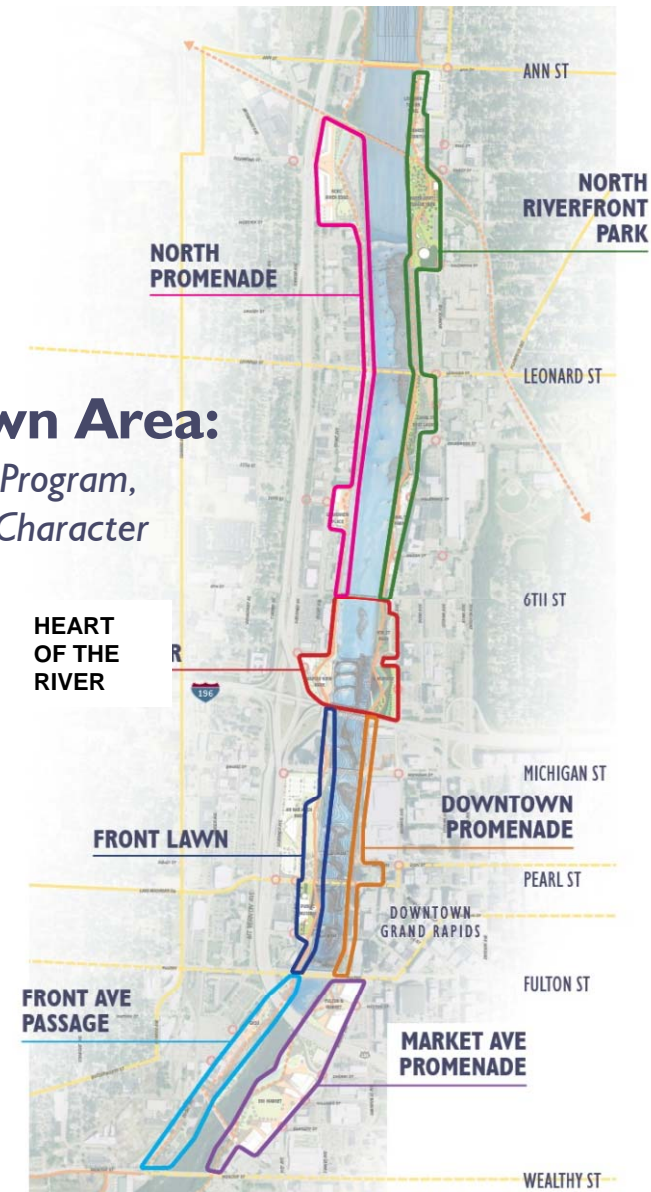
# Developed character-based planning districts

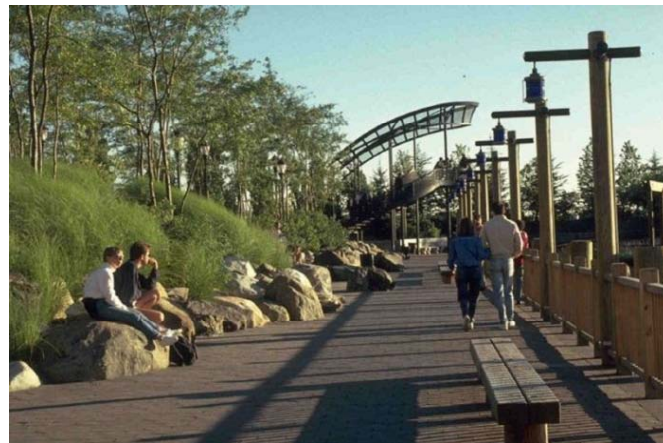




## Downtown Area:

*Potential Program,  
Uses and Character*





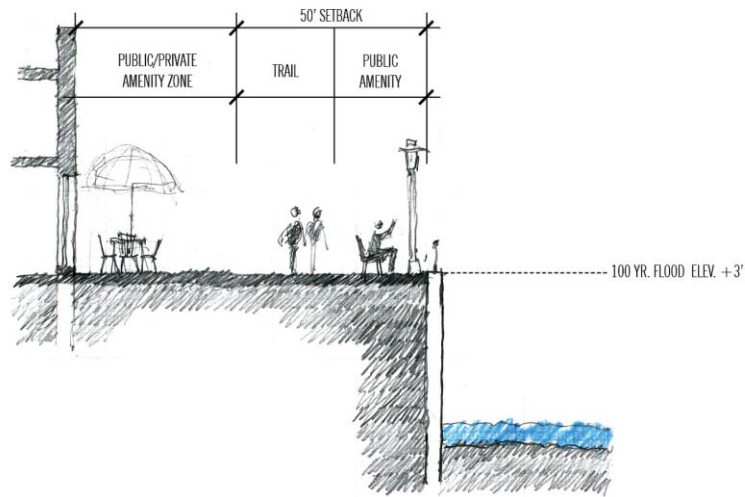
## North Promenade

informal character  
neighborhood flavor  
locals hangout/meeting place  
linear park  
river overlook  
cantilevered walk

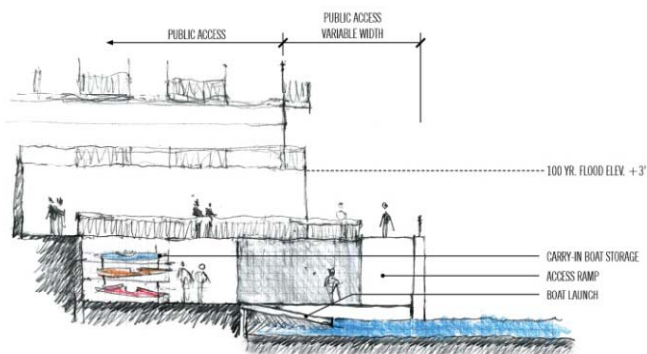




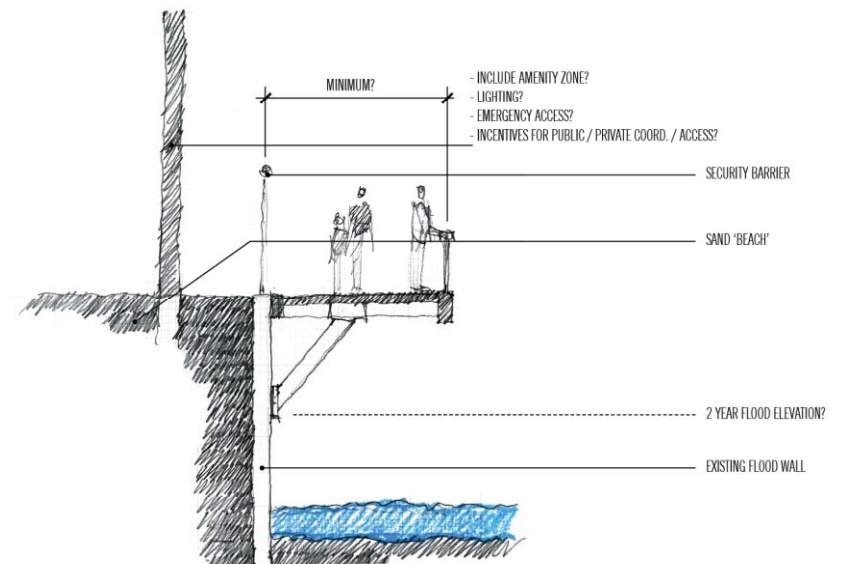
## North Promenade



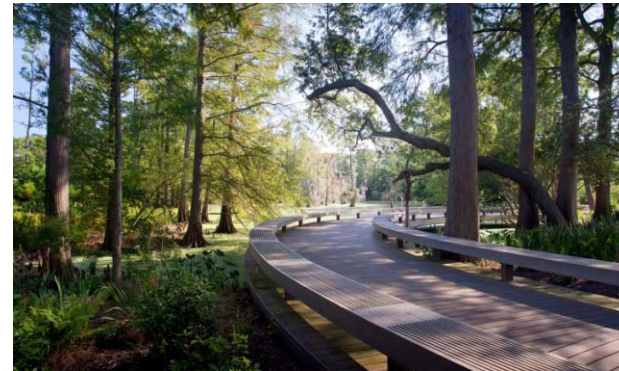
Redevelopment edge with floodwall



Boating access / variable setback



Cantilevered trail

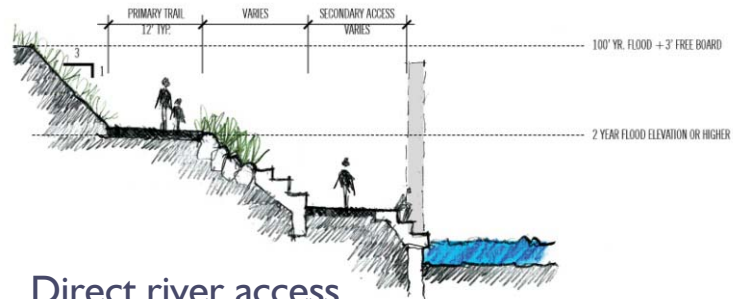
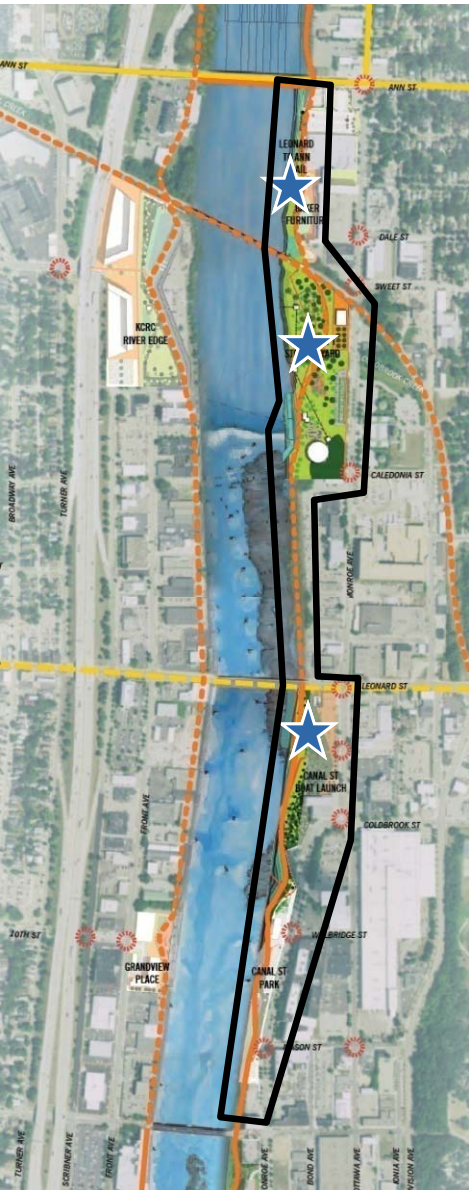


# North Riverfront Park

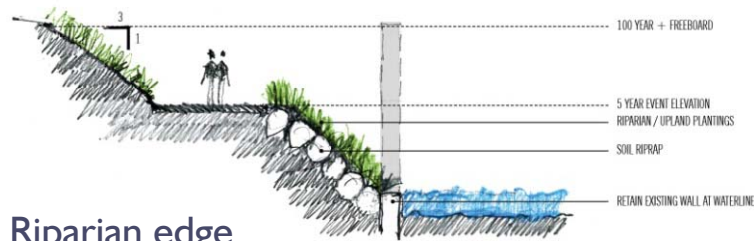
natural/river character  
adventure parks  
family picnics, gathering, leisure  
outdoor learning  
river recreation destination  
touch the water



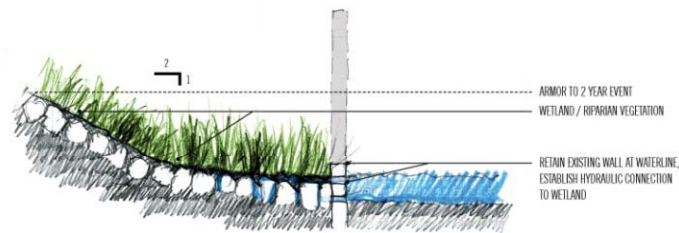
# North Riverfront Park



Direct river access



Riparian edge



Backwater wetland

# River Theater

balance of river + civic character

river events

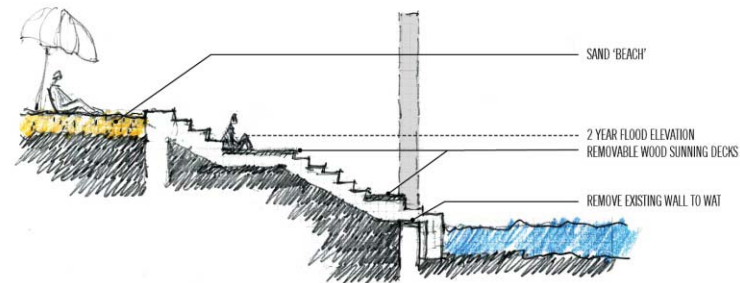
festivals

unique outdoor programming

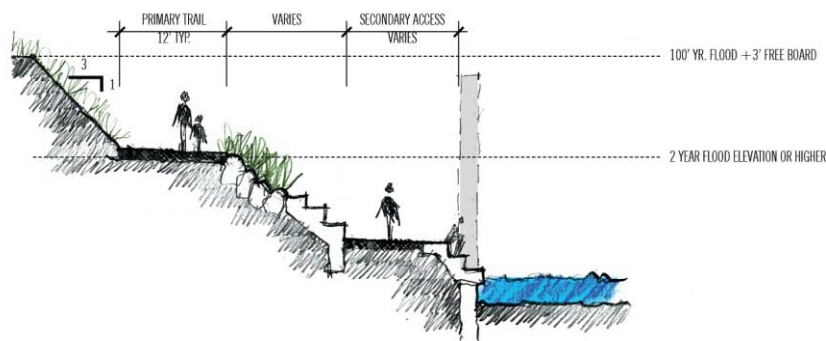
beach

touch the water



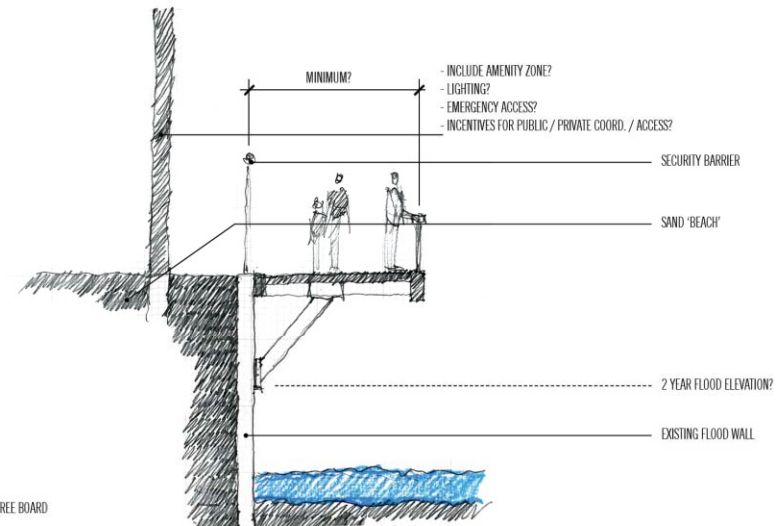


Beach edge



Direct river access

## River Theater



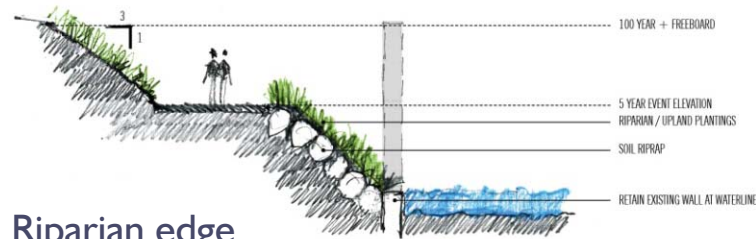
Cantilevered edge

# Front Lawn

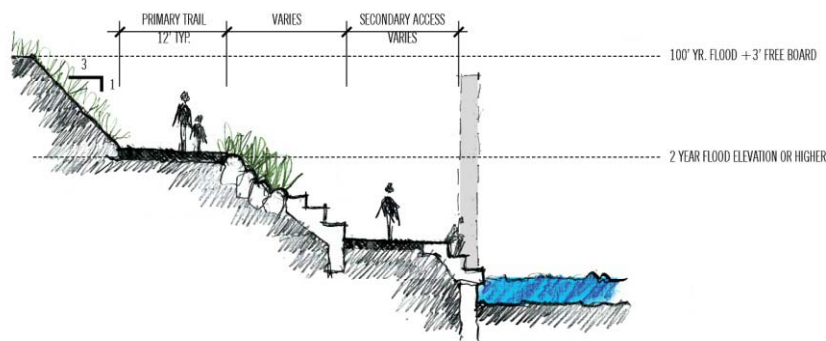
links a series of parks  
cultural district edge  
community/festival gathering  
outdoor education  
touch the water



# Front Lawn



Riparian edge



Direct river access

# Downtown Promenade

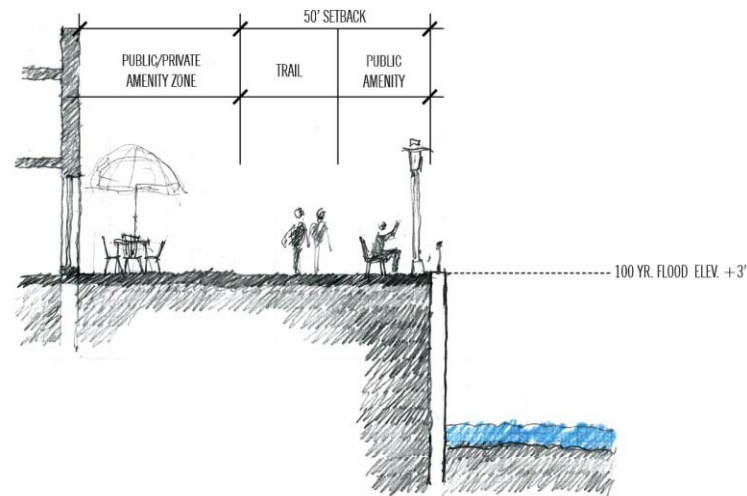
20-30' wide promenade  
river overlook

small pockets of green  
downtown docks

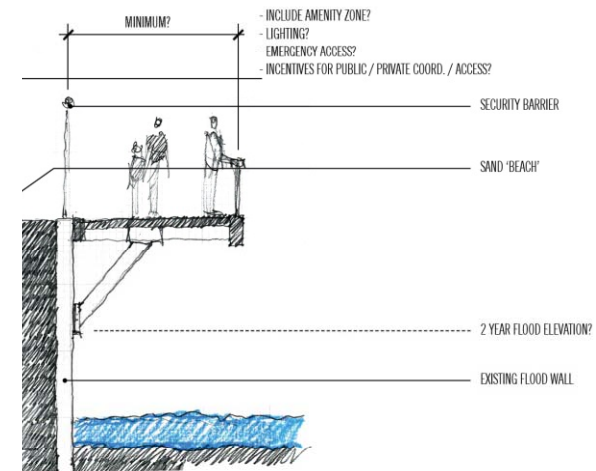


# Downtown Promenade

...



Redevelopment edge with floodwall

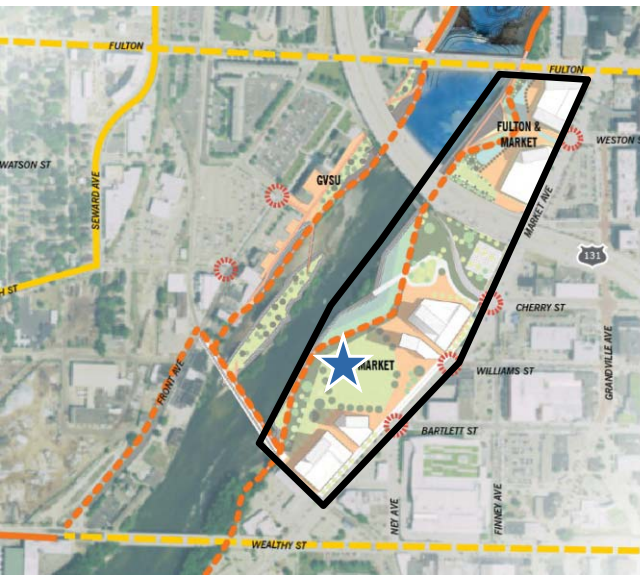


Cantilevered edge

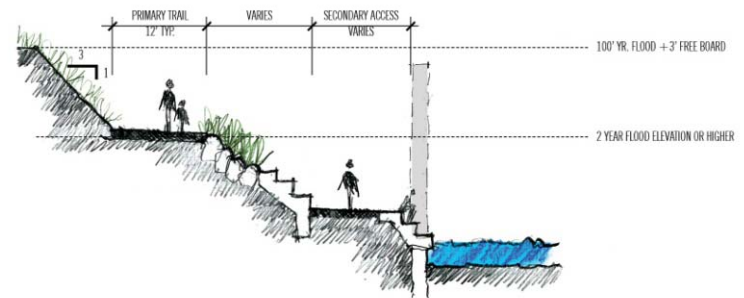
# Market Avenue Promenade

...

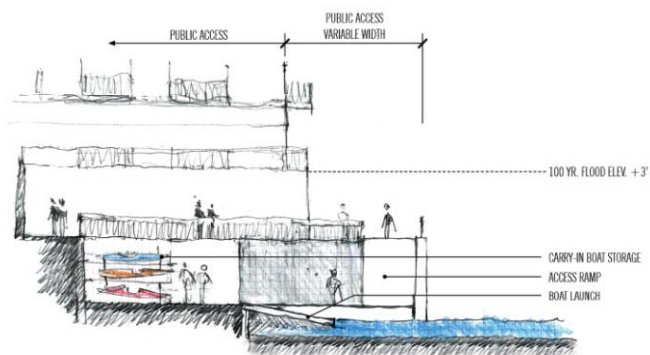




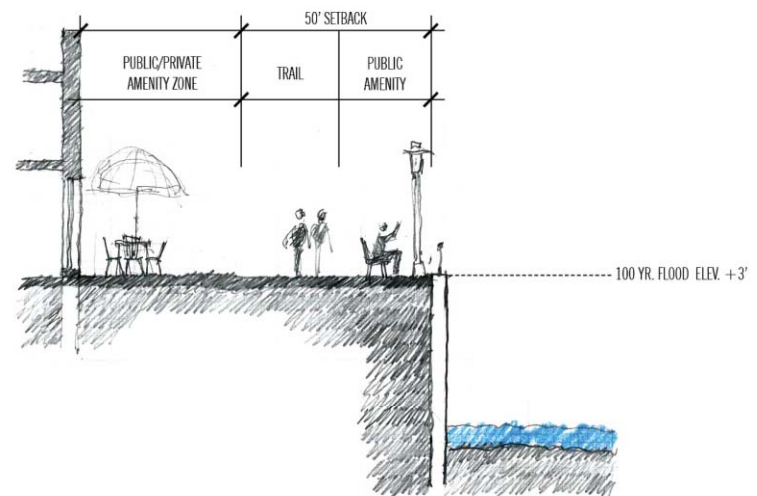
## Market Avenue Promenade



Direct river access



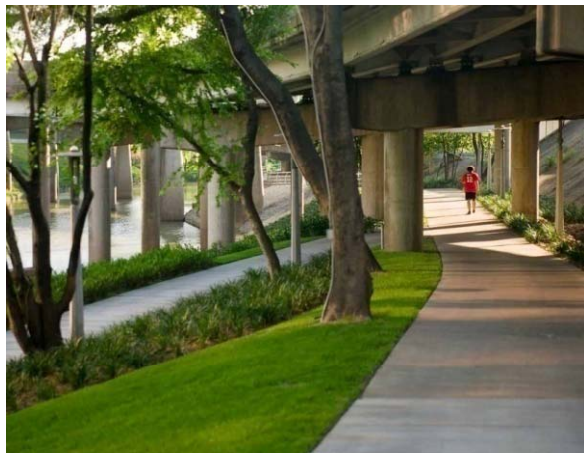
Boating access / variable setback

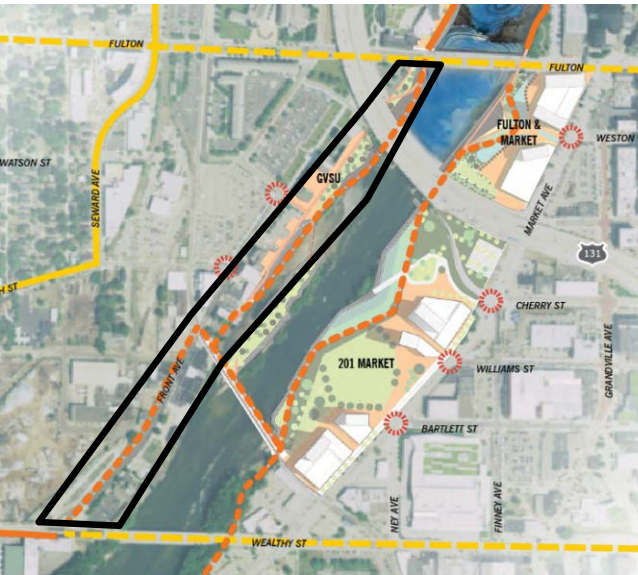


Redevelopment edge with floodwall

# Front Avenue Passage

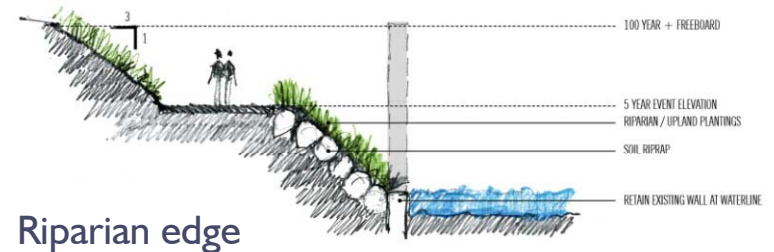
...



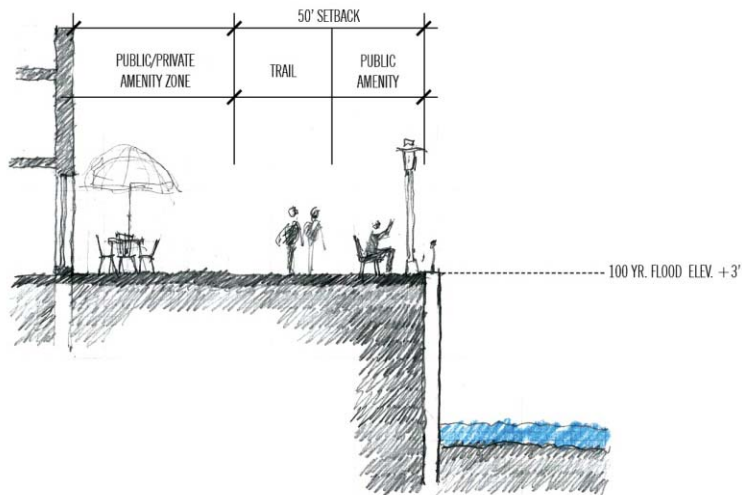


## Front Avenue Passage

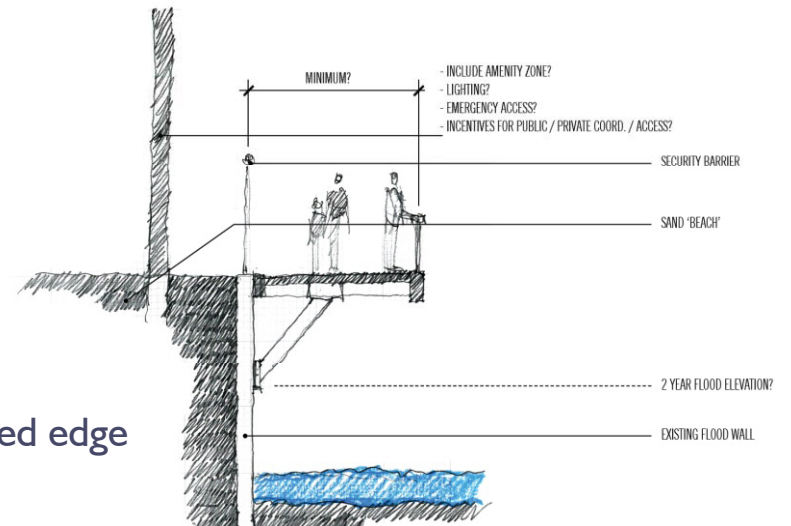
...



Riparian edge



Redevelopment edge with floodwall



Cantilevered edge

**Q / A**

# Next Steps