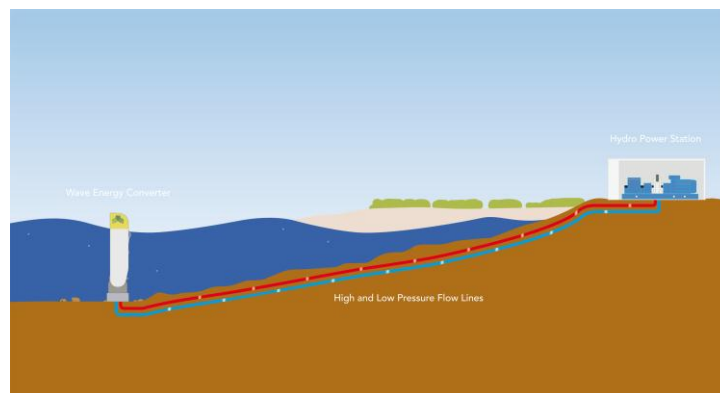




- Oyster is a bottom hinged flap.
- Oyster is installed in 10 – 15m water depth.





## Aquamarine Power

- Oyster 800 currently installed at EMEC.

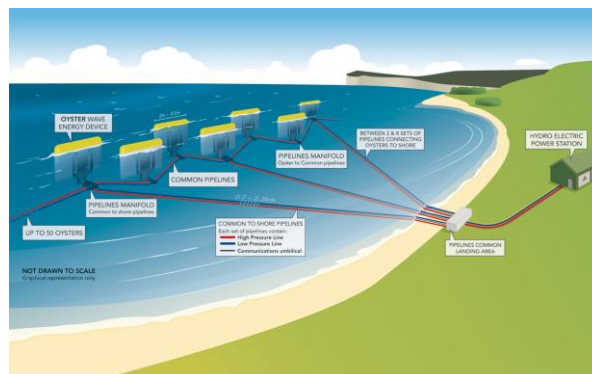


3



## Resource Assessment

- Inform site development.
- Inform site layout.
- Produce energy production estimates (EPEs).

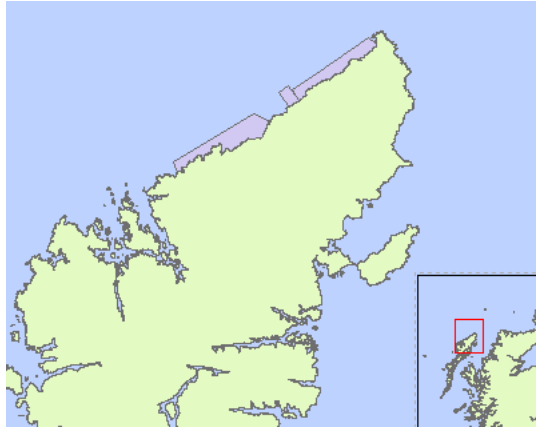


4



## Resource Assessment

- Lewis 40MW lease option area.



5



## Resource Assessment

- Aquamarine Power's modelling levels.

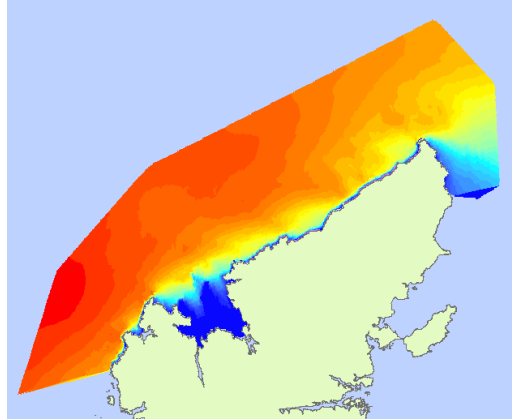
	A	B	C	D
<b>Summary</b>	High Resolution Calibrated	Medium Resolution	Low Resolution	Very Low Resolution
<b>Model Type</b>	In house	In house	In house	External
<b>Boundary Data</b>	Fully Spectral	Fully Spectral	Parameter	
<b>Surveyed Bathymetry</b>	Yes	Yes	No	
<b>Calibrated</b>	Yes	No	No	

6



## Lewis Model

- Level C assessment already carried out.

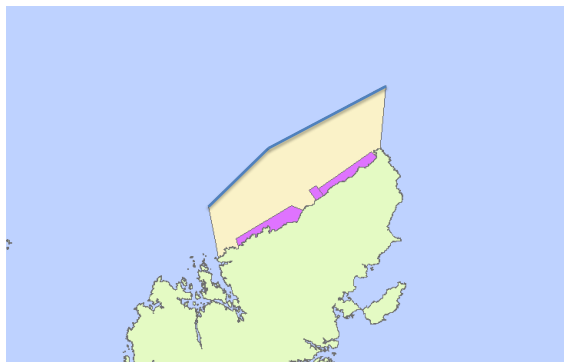


7



## Lewis Model

- Currently carrying out level B assessment.
- Deep water spectral data applied to offshore boundaries.

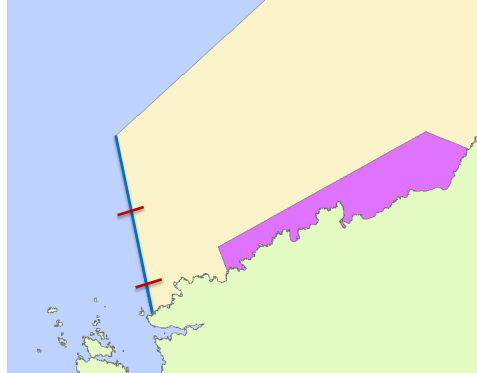


8



## Lewis Model

- What about the nearshore boundaries?
  - How do we quantify this loss?
  - Scale with energy vs. depth.

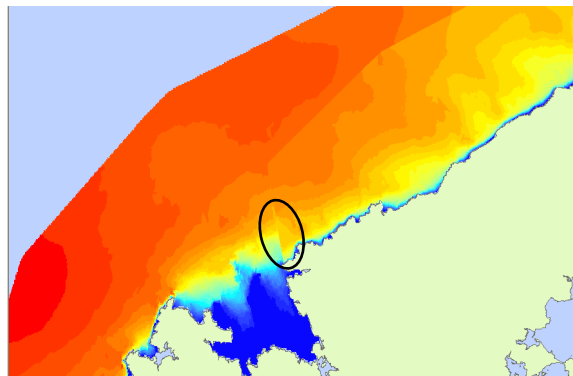


9



## Lewis Model Results

- Model results good.
- Some issues.

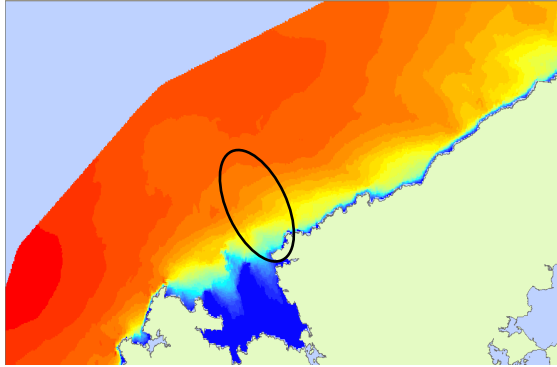


10



## Lewis Model Improvements

- How can we improve the level B model?
  - Apply different scaling.
  - Scale based on power loss in level C model.

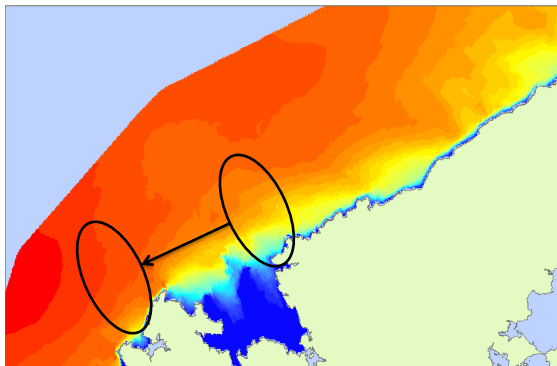


11



## Lewis Model Improvements

- How can we improve the level B model?
  - Move the South boundary.



12



Aquamarine Power  
Elder House  
24 Elder Street  
Edinburgh  
EH1 3DX

Tel: +44 (0) 131 524 1440  
Fax: +44 (0) 131 524 1444  
[www.aquamarinepower.com](http://www.aquamarinepower.com)