

# THE STEEPLE

The Church of the Nativity

October 15, 2014

## Our Mission

*God's family at the historic Church of the Nativity is joyfully and energetically committed to sharing Christ's love and healing by proclaiming the Good News of the Gospel through worship and service to the world.*



CHURCH  
OF THE  
NATIVITY,  
EPISCOPAL

Est. 1843

## Worship Schedule

(\* Nursery available)

### SUNDAY

7:45 a.m. Rite I  
Holy Eucharist  
Bibb Chapel

8:45 a.m.\* Rite II  
Holy Eucharist  
Children's Chapel

11:00 a.m. \* Rite II  
Holy Eucharist

### WEDNESDAY

12:00 noon

Holy Eucharist & Healing  
(Bibb Chapel)

### THURSDAY

6:00 p.m.

Holy Eucharist Rite II  
Bibb Chapel

Sometimes the longest journey we ever take is from our heads to our hearts. Have you found that reading the Walking the Way reflections has helped to move your thinking about your practice of giving from your head to your heart?

I'm drawn to the image that our walk in faith is indeed a life-long journey. We take it one step at a time, one day at a time. I've become increasingly convinced that God asks us to simply be faithful, consistently faithful. Our intentional giving is a sign of that faithfulness.

In my own journey, I have learned that generous giving is a source of joy in my heart. I'm heartened by what my giving can do for the mission and ministry at Nativity and I'm equally heartened by what it can do for me! Each time I give generously, I release the grip of fear and attitude of scarcity that resides in my heart and mind and I allow myself to be fully embraced by God's loving grace. Jesus calls us to trust in the abundance and blessings of God. While it is sometimes easier said than done, we must learn to let go and have complete faith that God will provide and take care of us—just like our giving helps to provide and take care of others. In essence we, acting in faithfulness, are the hands and feet of God.

One of the responsibilities of being Senior Warden is to co-sign checks for the church. Every time that I co-sign checks my heart is filled with warmth because of the many worthwhile groups our beloved church supports—both within the church and outside the church. From youth ministries to the Community Free Dental Clinic and the myriad of other benevolent groups, YOU, through your giving are bestowing your love on your neighbor. How wonderful is that?!! I read recently if your church closed its doors tomorrow, would anyone miss it? I would emphatically shout out *absolutely!* Through our intentional and faithful giving we are a true blessing to many, many individuals. This is exactly what Jesus meant when he said, "Love thy neighbor as thyself."

On Sunday October 26th, during our worship service, we all will be invited to bring our pledge cards forward. Beth and I have discerned that the next step in our journey of giving will be to increase our pledge/promise to Nativity by ten percent. I ask that you please pray about your pledge/promise to Nativity. I believe your faithful giving will hearten you.

On behalf of the Vestry/Bishop's Committee, thank you for your generosity and faithfulness in taking the next step in discipleship. We are grateful to share in the journey of following Jesus with you—one-step and one day at a time.

Your Senior Warden,



November 1 — Small  
Canned Hams, Canned  
Vegetables, Canned Fruit,  
and Boxed Cereal  
Thanks for your generosity!

The Spiritual Development Committee presents

## WEDNESDAYS IN OCTOBER

**"Challenges of Big Churches—  
How do we stay in Community?"**

5:30pm Dinner  
6:00pm Guest Speaker

Oct. 15 — The Rev. Dr. Glenda Curry. Rector of All  
Saints Episcopal Church, Homewood, AL

Oct. 22 — The Rev. Hal Oakley, Pastor, Covenant  
Presbyterian Church -- Huntsville

Dinner & nursery reservations required through the  
church office (256-533-2455) by noon on Tuesday.  
(Dinner: adult \$7, child \$5, family cap \$20)

## Cookies for Kairos

Final pick-up will be at 11:00 am THURSDAY, 10/16,  
from the church office

Michael Shipley and Bob Serio are being sent to  
prison... - and we want to send them with lots of  
cookies!

Please get out your best recipe for cookies, brownies,  
and Rice Krispie treats and make them for the "men in  
white" at KAIROS. Here are the details:

- Baked goods must be homemade - no store  
bought!
- No fruit (but, nuts are OK!)
- No toppings (powdered sugar, sprinkles, etc.)
- Package cookies 12 per gallon in a Zip-lock bag  
feel free to give as many dozen as you'd like!

This is a great APOSTOLIC ACTION opportunity and I  
hope you will participate! Over ONE THOUSAND  
DOZEN cookies (yes, over 12,000 in total!!) will be  
given from the various churches who are supporting  
KAIROS!

## *The Daughters of the King*

*invite all the Women of the Church to hear  
The Rev. Bill Winters speak on "Gospel Hospitality"*  
Tuesday, October 21

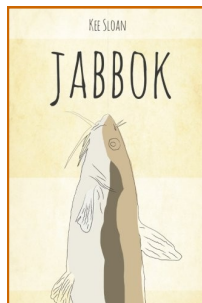
*Lunch (prepared by Sally Stockton) will be served at  
11:30am, with Fr. Winters' talk to follow.*

Cost of lunch is \$7.00. Please call the church (256-  
533-2455) to make your reservation by noon on  
Monday, Oct 20, 2014.

If you have questions E-mail or call Caffey Litkenhous -  
[cslitk2@me.com](mailto:cslitk2@me.com) or 256-883-2668.

**Book Signing – Friday, October 17,  
4:30-6:00pm,**

**Greene Street Market Store.–**



Bishop Kee Sloan will be in the store sign-  
ing copies of his book, *Jabbok*. An ideal  
Christmas gift, get a signed and dedicated  
copy.

The Greene Street Market Store is one  
door south of Nativity on Eustis Ave.

## *Mission Guild*

***Monday, October 20, 10:00am***

Nativity's Mission Guild will meet in the Church Li-  
brary. Our special guest speaker will be The Reverend  
Bonnie McCrickard.

Hostesses will be Sue Rowan, Berta Hargett and Mary  
Jean Diehl.

Please bring bingo prizes for Aquarius Club. Come  
join us! Guests are always welcome.

The next study for Reflections is "Making Sense  
of the Bible" by Adam Hamilton. Books can be  
ordered from Amazon or Cokesbury, but not  
from Lifeway.

Our first class in this study will begin on 10-16.  
Any questions please contact Debbie Collette at  
256-527-5050.

## Support the Ribbon Run! Saturday Oct 18, 8:00am

Looking for someplace to cheer on the Liz Hurley runners? Park at Nativity, have a  
cup of coffee, and cheer 'em on! (Pink tutus optional!)

Coffee and water will be set up in the roundabout.  
Lots of Nativity members run, so come on out!  
It's like tailgating for a run!

Contact Stacy Moon 256-270-5866 for more details.



Nativity & First Presbyterian  
Present the 4th annual



You'll Have A Scary Good Time on Greene Street!

Treats



Free Hot Dogs  
1st Pres. Hall

Bounce  
House



Costume Contest

**Sunday, Oct 26 5-6:30 PM**  
In the Greene St. Market Parking lots



## Children's Corner

Oct 15 & 22 4:15 Music skills  
4:45 Cherub choir  
5:00 St. Cecelia's choir  
5:30 Supper and program by reservation  
(nursery for 4 and under)

Oct 19 Food Trucks and Ministry Fair  
Club 56 - Sr. Visits

Oct 26 5-6:30 Trunk or Treat

Contact Barbara Bonner: [bbonner@nativity-hsv.org](mailto:bbonner@nativity-hsv.org)

## Trunk or Treat We need volunteers to...

Donate candy  
individually wrapped

Assist with activities

Decorate their cars.  
Even if you don't have kids who  
participate, please help so families  
with kids can be together.



EYC Church of the Nativity

**Mark Your Calendars: EYC for the next 3 weeks!**

**Corn Maze this Sunday, October 19th**

Meet in the circle at 3:00 for the ride to Lyon Family Farms in Taft, TN. Admission to the farms is taken care of but you need to bring money for supper and for any extra activities (pumpkin slingshot, corn cob blaster, etc. Find out more about available activities at <http://www.lyonfamilyfarms.com/>). We'll return to the church by 7:30 PM. [Sign up for a ride by emailing William!](#)

**Trunk or Treat, Sunday, October 26th**

This year, we're teaming up with the First Presbyterian youth to decorate their BUS! Come to the church parking lot at 3:30 to help with set up and decorate. From 5:00-6:30, youth volunteers will also be needed to help run the cupcake walk and moon bounce. Look for a sign up sheet in this email blast next week!

**The Second Tennessee Valley Cup EYC Soccer Tournament, Sunday, November 2nd**

The time has come again to take on the youth of St. John's Decatur and St. Thomas in south Huntsville to see who can field the best soccer team!

## Youth Notes!





## ALL SAINTS' MEMORIAL DEDICATIONS

All Saints' Sunday, November 2, 2014 is a splendid time to honor your loved ones by making a memorial gift in their memory.

Your gift supports the purchase of annual and perennial plantings, shrubbery, and trees that help make the garden and our church grounds one of Huntsville's most beloved spots for respite and contemplation.

Please make your donation by Sunday, October 26 to be included in the special All Saints' Sunday Memorial Service insert. Checks should be payable to Church of the Nativity with annotation, Memorial Garden Fund.



You're in the Store

Buy ONE more!

**Nursery Families** are beginning a new ministry.

Simply pick up an extra pack of diapers and wipes, drop off at the Nursery on Sunday. Collected items will be delivered to children in the Madison County Foster Care Program.

*Of the almost 450 children in protective services in Madison County, approximately 1/3 are babies and toddlers. The foster parents only receive \$300 per month per child and are frequently middle or low income themselves. Diapers are a large expense, and these donations will help enormously. All sizes are needed.*



## “Volunteers needed”

Starting November 3<sup>rd</sup> store hours will be Monday thru Friday 10am - 5pm, and Sundays during the services. With the new store hours, we need two volunteers per day to work 3.5 hours each. 10 volunteers are needed for each volunteer working one shift each week.

Each volunteer receives detailed training in what they need to operate the store.

This is a very rewarding service due to our friendly local clientele, and supporting Nativity's Outreach program.

For details about volunteering, please call Hanns Billmeyer at 256-883-5739, or email: [venhan@att.net](mailto:venhan@att.net)

### Market store needs:

Egg cartons    Store bags (plastic or paper)



**Thursdays**  
**Through October 30**  
**3:00 pm—6:00 pm**

## 2014 CHRISTMAS FLOWER DEDICATION

Please complete and mail this form with  
your check payable to  
“Flower Guild”  
to Andrea Vandervoort,  
434 Locust Ave  
Huntsville, AL 35801.

Christmas dedications are \$20 each.  
**PLEASE PRINT ALL INFORMATION**

*Please be specific by underlining or circling  
your desired dedication below:*

All dedications will read:

“To the glory of God and...    “in loving memory of”    “in thanksgiving for”    “in celebration of”

**Name for this dedication:**

\_\_\_\_\_

**Your Name** as it is to be listed in Christmas service leaflet (if you do not wish your listed, please indicate)

\_\_\_\_\_

Phone #: \_\_\_\_\_

*Friends of Music Presents...*

*Pavel Steidl*  
*Classical Guitar*  
*Saturday, November 1, 2014*  
*5pm*




Church of the Nativity, Episcopal  
 208 Eustis Avenue SE  
 Huntsville, Alabama 35801  
 256-533-2455

The program includes works by Czech Aristocrats, and N. Paganini.

Mr. Steidl will be interviewed on WLRH radio;  
 Thursday morning October 30.

This service commemorates the 15th anniversary of the commissioning of the Magnificat and Nunc dimittis by Joel Martinson in memory of Dr. Harold "Cotton" Ray.

A dinner will be served after Evensong - in Ridley Hall. Sign ups for the dinner should be made by calling the church office ([256.533.2455](tel:256.533.2455)).

The meal is \$15 per person.

Evensong sign up deadline is Thursday, October 30.

**EVENSONG for ALL SAINTS'**  
**NATIVITY CHOIR**  
**Sunday, November 2**  
**5:00 p.m.**  
 Service music by Martinson, Harris & Moore



Church of the Nativity - 208 Eustis Avenue - Huntsville, Alabama - 256.533.2455 - [www.nativity-hsv.org](http://www.nativity-hsv.org)

55th Annual  
**Festival Service of Lessons & Carols**  
 All Saints' Chapel, Sewanee, Tennessee  
 Sunday, December 7th



Price of \$50.00 per person, includes:

- Transportation via luxury motorcoach with WiFi and video
- Episcopal happy hour served enroute
- Reserve seating at the 5:00PM service
- Dinner at St Mary's Conference Center following the service

---

- Departure from the church at 1:55PM
- Arrival in Sewanee at 3:30PM
- Limited seating (only 50 seats!)
- Payment required at time of reservation
- Reservations through the church office
- For more information contact Sam Porter (256)651-8990

IN HONOR OF VIOLA BARRETT GREENLAND



## Stewardship Thoughts – Sunday, October 19

### Outreach Ministry Fair and Food Truck Sunday!

Stewardship is about how we use EVERYTHING that God gives us...our time, our talents, and our financial resources. Last month we focused on our various inreach ministries – those that support our worship, spiritual development, and community.

This Sunday, we shift our focus to outreach ministries – those ministries that have an impact outside of our parish in the community, the Diocese and the world.

We hope you will take this opportunity to visit with some of the many ministries supported by the Church of the Nativity and find out how you can be involved in these transformational activities. The Outreach Ministry Fair begins following the Sunday School hour until 1:00pm.

Nativity supports over 30 outreach ministries and activities. The following ministries will be represented during this event:

- |                                    |                                      |                                |
|------------------------------------|--------------------------------------|--------------------------------|
| * Episcopal Relief and Development | * Haiti medical mission              | * Habitat for Humanity         |
| * KAIROS prison ministry           | * Downtown Rescue Mission            | * Meals on Wheels              |
| * Adult Learning Center            | * Friends of Salvation Army          | * Oscar Mason Library          |
| * First Stop homeless ministry     | * Sawyerville Summer Camp            | * Alabama Poverty Project      |
| * Interfaith Mission Service       | * Russel Erskine Ministries          | * Community Free Dental Clinic |
| * Camp McDowell Special Session    | * 305 8 <sup>th</sup> Street program | * Boys and Girls Club          |
| * FOCAL                            |                                      | * Greene Street Market         |

### Then...

plan to have lunch with your church family during this inspiring event with the following vendors offering food for sale:

- |                         |                                  |                     |
|-------------------------|----------------------------------|---------------------|
| * Earth and Stone Pizza | * Ashley Carlton (Fried Chicken) | * Rocket Dogs       |
| * Lemon Love            | * Ice Works of Huntsville        | * What's for Supper |
|                         | * Food Fighters                  |                     |

We hope you visit each of our outreach ministries and find a place where you can serve Christ in the community, Diocese, or the world. And, please join us for lunch with our wonderful local food vendors.

### Nativity Stewardship Ministry



### Nativity makes it easy to e-pledge and e-pay!

*How will you make and pay your pledge in 2015? Your Stewardship Ministry urges you to consider submitting your pledge on-line and then paying your pledge weekly or monthly through electronic banking. Here's how it works:*

**To e-pledge:** open the Nativity website ([nativity.dioala.org](http://nativity.dioala.org)), then click on the GIVING tab near the top of the page. Choose PLEDGE NOW, then complete the form and submit

**To e-pay your pledge:** go to your bank's electronic banking site and set up Church of the Nativity as a payee. The address is 208 Eustis Avenue, Huntsville 35801. Put your name as the account number and set up payments to be submitted on a regular basis, generally weekly or monthly.

*We will have a commitment ceremony and blessing of the pledge cards at the 7:45, 8:45, and 11:00 am services Sunday, October 26. If you have already made your pledge electronically, there will be cards in the pews on which you can note that you have already pledged, but would like your pledge blessed with the others. We hope you will consider electronic pledging via the Nativity website and automated pledging through your bank this year!*



## October's Stewardship of Creation Tip - Recycling Leaves

According to the U.S. Environmental Protection Agency, Americans generate about 243 million tons of municipal trash each year. *Roughly 75 percent of all municipal waste is material that could be recycled.*

You can have an impact on decreasing the volume of trash in our landfills and add a benefit to your yard at the same time by recycling leaves and other yard waste for use as mulch or compost them for use as a soil amendment.

### **Leaves make an excellent mulch for outdoor plants and shrubs.**

Whole leaves may be used for mulch, but you can reduce their volume (to as much as one-tenth the size) by shredding or chopping them, which you can do by just mowing over the leaves. You can use a bag on your mower to collect them and then spread on garden bed and under shrubs and trees.

Mulch conserves water, suppresses weeds, and moderates fluctuating soil temperatures that can disturb roots.

If your soil drains well (is sandy or loamy), spread up to 5 inches of chopped leaves on all garden beds and under all shrubs, hedges, and trees. This layer will settle down to 3 or 4 inches, the maximum application you can make without risking oxygen depletion in the soil. If your soil is predominantly clay, spread 2 to 3 inches for best results.

Leaves can also be turned into compost. **Composting at home saves transportation and disposal costs and provides an environmentally sound way to manage yard waste.**

If you have a compost bin, fill it in the fall and keep any remaining leaves in a holding bin or in plastic bags stored near the bin. As leaves settle in the bin, add another bag or two of the remaining leaves. The settling process will go faster if some microorganisms are added to the leaves. Mix a few shovelfuls of soil or finished compost into the pile at the beginning of the process. *A cup of a nitrogen fertilizer added to the pile will then encourage microorganism reproduction and growth.*

By spring, all leaves should be in the bin. By early fall, they will have decomposed enough to be spread around the landscape as winter mulch or *to be tilled into garden soil to improve the soil for growing plants next spring.*

If you don't have a bin, you can **create a compost heap**, which is simply a free-standing pile of leaves. A good, workable size for a compost heap is about 3 feet wide and 3 feet high. The length can vary according to the amount of leaves used.

To speed up the composting process, before gathering the leaves, mow over them. You can use a bag on your mower and just mow them up, then put into your compost bin or heap.

You can also rake them into low piles and just mow those piles, and then put them into your compost bin or heap.

In late spring, you can use the compost to improve your soil, or to mulch in your landscaped beds, under shrubs, hedges and trees. You can put a thin layer of composted leaves and then, if desired, use a prettier mulch on top. This will reduce the amount of bought mulch you will need. You can also add the compost to flower or vegetable gardens to provide vital nutrients to help plants grow and look better and to mulch your vegetable garden to help conserve water.

Recycling leaves is a great and very specific way to be a good steward of God's wonderful creation. By the simple step of recycling leaves, you will be taking steps to:

- Reduce waste going to the landfill and reduce the costs related to getting it there!
- Encourage improvement of soil through natural processes
- Reduce need for fertilizer, which saves you money

## INTERCESSION REQUESTS

**We pray for those who are ill or recovering:** Adalene Bledsoe, James Potts, Lea Ellison, Stephen Dufrechu, Aubrey Tycer, James McGee, Tazewell Mackey, Liam Mackey, Lynn Jones, Barry Morton, Ann Garnett, Lorene Dilworth, Bill Dilworth, Gene Sullivan, Nancy Colin Swenson, Harry Beazley, Carla King, Eileen Sullivan, Elsie Olsen, Leigh Wahl

**We pray for the birth of a child:** Phoenix Reign Smith, born Sep 25 to Teague Smith and Rebecca Broussard

**We pray for those deployed/serving with the Military:** US Navy, Jesse Teal

**We pray for the departed:** Robert Devenish, father of Tom Devenish; Charlene Kirk; Patricia Williams

**We give thanks for birthdays of our children:**

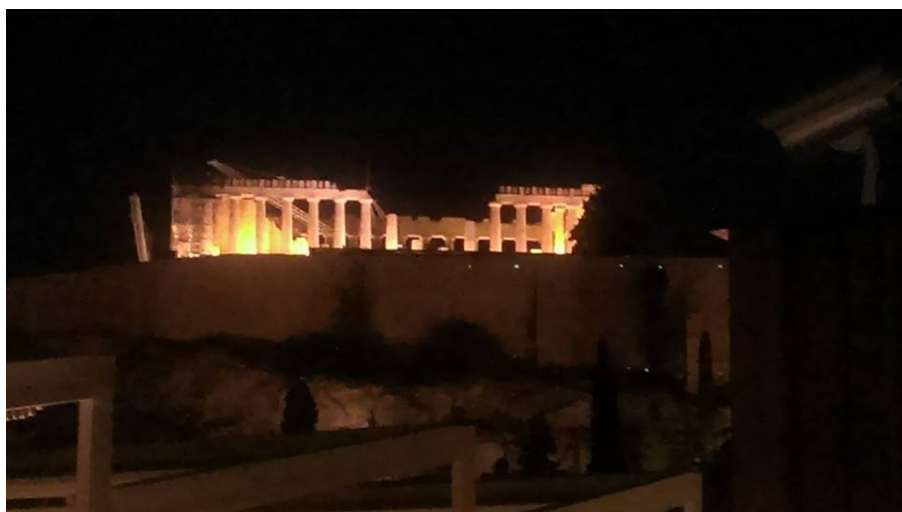
10/17 Will Poterfield	10/19 Cole Greco	10/20 Amelia Rosler	10/21 Phoebe Duncan
10/21 Windham Hunter	10/23 William Keener	10/23 Jacob Clute	10/25 Maria Caprio
10/26 Waring Cantey	10/28 Piper Smith	10/29 Davis Manning	10/30 Grace Molloy
10/30 Charles Warren	10/31 William Post	10/31 Hunter Warren	11/3 Dalson Brantley
11/3 Tucker McClung	11/4 Katie Banish	11/4 Neill Luther	

## **NATIVITY PILGRIMAGE TO GREECE AND TURKEY:** *Christian Church Foundations with the Apostle Paul's Missionary Travels and Early Church Developments in the Byzantine Empire*

The Nativity Pilgrimage to Greece and Turkey exploring Christian Church foundations in those ancient geographical areas of faith development and growth and where the Apostle Paul's influence was profound departed October 8. Father Anderson has been teaching the Zimmerman Bible Class on Sundays to share this experience with the wider parish.

The Pilgrims will share their experiences from Athens, Meteora, Thessaloniki, Philippi, Istanbul, Ephesus, Corinth and other places Paul visited in the Zimmerman Class in November.

Please keep our Pilgrims in your prayers.



Selected photos from the pilgrimage. Check out the others sent by Fr. Anderson on our Facebook page:

<https://www.facebook.com/groups/109244155680/>





## Nativity Blue Apron Hospitality for 11:00 Service, New Format, No Food!

Can you help out with the Blue Apron Hospitality following the 11:00 Service on Sunday? The only requirements are donning a blue apron and about 30-45 min. of your time. Cookies are provided by the Men's Breakfast Cooks, and ice water and coffee are provided by the church.

This important ministry needs you to greet newcomers and offer an opportunity for short fellowship and conversation with fellow parishioners following the service.

If possible we would like to ask each volunteer to sign up for a month, or 2 volunteers to split a month. That way your duty is done for the entire year!

We are covered through October. So if you can take a month or share a month with someone else please contact Mark Sutherland at Randsome7@gmail.com or 256-653-5917; or Valerie Chesney at valchesal@hotmail.com or 205-533-2440.

### Taking Nativity To Our Parishioners

If you know of a parishioner who is having a difficult time coming to church and would like to have someone visit them please let us know. Nativity's Pastoral Visitors and Eucharistic Visitors can take our church out to those who may dearly miss being here.

If you have any questions or would like to have a loved one matched up please contact Rusty McCown at 533-2455. Thank You!

### Steeple update:

Lee Coggins provided the photos in the October 1 Steeple for the September 28 Blessing of the Animals.

### Pastoral Care through Stephen Ministry



Nativity has recently begun Stephen Ministry, a new and exciting ministry that will allow us to reach out to more parishioners with one-to-one Christian care. A team of Nativity parishioners, known as Stephen Ministers, has been equipped to provide quality Christian care to people facing personal crises, such as: death of a loved one, divorce, terminal illness, job loss, the birth of a child, loneliness, hospitalization or a spiritual crisis. For more information, contact Rev. Rusty McCown or go to the Stephen Ministry website:

[www.stephenministries.org](http://www.stephenministries.org)



# WORSHIP SCHEDULE November 2014, published 10/15/14

SUNDAY, November 2, 21 <sup>st</sup> Sunday after Pentecost - All Saints'; Baptism					
Service	Celebrant	Preacher	LEM	Lector	Intercessor
7:45 am	McCown	McCrickard	Lea Ann Barnett	Lea Ann Barnett	Lea Ann Barnett
8:45 am	Anderson	McCrickard	Allen Daniels, Robert Dunn, Bob Serio	Meredith Walker	William Blackerby
11:00 am	Anderson	McCrickard	Richard Spera, Sally Ann Culver, Deborah Baker	Ronnie Rogers, Jim Douthit	Marilyn Lands
WEDNESDAY, November 5, HE					
Service	Celebrant	Preacher	LEM		
12 noon		McCrickard	Cheryl Watts		
THURSDAY, November 6, HE					
Service	Celebrant	Preacher			
6:00 pm	Anderson		Shari Williams		
SUNDAY, November 9, 22 <sup>nd</sup> Sunday after Pentecost					
Service	Celebrant	Preacher	LEM	Lector	Intercessor
7:45 am	Anderson	Anderson	Sue Johnson	Sue Johnson	Sue Johnson
8:45 am	McCown	Anderson	Margaret Bibb, Don Lambert, Lewie Bates	Melissa Kirkindall	Lee Hicklen
11:00 am	McCown	Anderson	Jordan Cozby, Ed Vaughn, Rob Cozby	Walter Thames, Ron Hogan	Deborah Baker
WEDNESDAY, November 12, HE					
Service	Celebrant	Preacher	LEM		
12 noon	Anderson		Marilyn Lands		
THURSDAY, November 13, HE					
Service	Celebrant	Preacher			
6:00 pm	McCown		Don Askins		
SUNDAY, November 16, 23 <sup>rd</sup> Sunday after Pentecost					
Service	Celebrant	Preacher	LEM	Lector	Intercessor
7:45 am	McCown	McCown	Ken Barnett	Ken Barnett	Ken Barnett
8:45 am	Anderson	McCown	Pat Quirk, Charlie Warren, Joan East	Lane Mickle	Melissa Kirkindall
11:00 am	Anderson	McCown	Sam Porter, Barbara Buice, Hanns Billmayer	Pamela Briggs, Ted Briggs	Rich Goodwin
WEDNESDAY, November 19, HE					
Service	Celebrant	Preacher	LEM		
12 noon	Holland-Shuey		Joan East		
THURSDAY, November 20, HE					
Service	Celebrant	Preacher			
6:00 pm	Anderson		Sally Ann Culver		
SUNDAY, November 23, Last Sunday after Pentecost - Christ the King					
Service	Celebrant	Preacher	LEM	Lector	Intercessor
7:45 am	Anderson	Anderson	John Hendricks	John Hendricks	John Hendricks
8:45 am	Holland-Shuey	Anderson	Shari Williams, Lee Hicklen	Buddy Moon	Lane Mickle
11:00 am	McCown	Anderson	Peter Cobun, Walter Thames, Marilyn Lands	Jordan Cozby, Ed Greene	Ed Vaughn
WEDNESDAY, November 26, HE - Thanksgiving Eve service					
Service	Celebrant	Preacher	LEM		
12 noon	McCown		Mary Hendricks		
SUNDAY, November 30, First Sunday of Advent					
Service	Celebrant	Preacher	LEM	Lector	Intercessor
7:45 am	Anderson	McCrickard	Lea Ann Barnett	Lea Ann Barnett	Lea Ann Barnett
8:45 am	Anderson	McCrickard	William Blackerby, Mike Ward, Lane Mickle	Stacy Moon	Virginia Kobler
11:00 am	Foreman	McCrickard	Pat Sampson, Don Askins	Sally Ann Culver, Rich Goodwin	Ronnie Rogers
USHERS					
8:45	Bill Starnes, Hall Bryant, Allen Daniels, Andy Kelly, Pat Sampson, Clay Sherrill, Ward Wilson				
11:00	Hanns Billmayer, Veneta Billmayer, Don Askins, Ernie Thomas, Susan Thomas, John Lewis				
ALTAR GUILD					
1	Linda Watts, Judy Heacock, Lea Ann Barnett, Rose Anne Shearer, Sue Johnson				
8	Sara Little, Gail Brown, Judy Vann, Sophia Rowe, Nancy Colin				
15	Louise Reynolds, Renée Elliott, Caffey Litkenhous, Alice Lanier, Wanda Cobb				
22	Emily Moody, Jewell Reynolds, Judy Heacock, Anne Carter, Debbie Joyner				
29	Lea Ann Barnett, Connie Stephenson, Rose Anne Shearer, Beth Pugh, Linda Watts				
CLERGY ON CALL SCHEDULE					
October 27 – November 2		November 3 – 9		November 10 – 16	
Anderson		McCrickard		McCown	
November 17 – 23		November 24 – 30			
Anderson		McCrickard			

Come to the meeting and watch the long awaited premiere of the Vestry video...

who are they? what do they do?

And why do they do it?

## Annual Parish Meeting November 2, 10:00am, Ridley Hall

### 2015 Vestry Nominations



**MARGARET DEVENISH**

Margaret became a member of Nativity in 1986 when she and her husband, Tom returned to Huntsville, his childhood home. She and Tom have two grown sons and their last two Newfoundland dogs. She participates



**ROBERT DUNN**

Robert Dunn grew up as an active member of St. Paul's Episcopal Church in Mobile, AL. He attended the U.S. Military Academy graduating in 1975 and served for almost 25 years in the U.S. Army. He was active in many military and civilian Episcopal communities while on active duty. In addition to his BS from West Point, he has a Masters of Engineering and an Engineer degree from the University of Florida. Robert and his wife, Kaaren, moved to Huntsville from Atlanta in 2000 when he retired from the Army and began attending Church of the Nativity. At Nativity, Robert is in his second year of EfM, serves as a Lay Eucharistic Minister, Table Leader for Seeker's Class for past two years, Cursillo, and Blue Apron Greeter during the summer. In



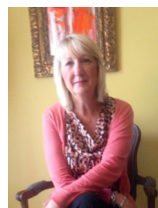
**LEE HICKLEN**

Lee has been attending Nativity since 2004 and was confirmed in 2010. He is currently serving as Chair of the Outreach Committee, and also as a LEM, Lector, LEV and Intercessor. He represents Nativity on the Huntsville Assistance Program where he is also Treasurer. Lee chose to attend Nativity and become an Episcopalian after serving as Board Member, Interim Pastoral Leader and Deacon at several Metropolitan Community Churches for over 30 years. He holds a Bachelor's and Master's Degree in Music



**CHAD HINTON**

Chad has attended Nativity since 2007. He and his wife Vicky Rush Hinton were married at Nativity in 2000 and have 2 daughters Vivian and Alice Mae. Chad joined the Episcopal Church in 2004, and prior to that spent a great deal of time volunteering with youth ministry in the Diocese of Alabama while his wife Vicky served as a Youth Ministry and Christian Formation Director for both St. John's Decatur and St. Thomas Huntsville. Chad has served as a volunteer in the WoRM, Men's Breakfast group and Vacation Bible School. He has also served as a member of the program staff for multiple summer sessions at Camp McDowell. Chad has worked for Lockheed Martin for 14 years as an IT Project Manager and is a small business owner of the popular mobile food cart Rocket Dogs. Chad is an active member of the community and has served as a volunteer and in leadership positions with



**LINDA WATTS**

Linda and her husband, Steve, have 4 children and 5 grandchildren. She has been a member of Nativity for 7 years. At Nativity, Linda is a member of the Altar Guild and the Wedding Guild. She coordinated volunteers the past 2 years for Wednesday Night Suppers in October and during Lent. She is also starting her second year of EFM. Linda attended Auburn University and received her BA degree from the University of



**BRANDON SMITH**

Brandon Smith is a lifelong Episcopalian having grown up at Nativity and St. Matthews in Madison, AL. He is a graduate of the University of Alabama which is where he met his wife, Megan. Brandon and Megan have lived in Huntsville and been members of Nativity since marrying eleven years ago. They have two daughters, Matilda (6) and Piper (2). Brandon holds a Masters of Accountancy from the University of Alabama in Huntsville and is a Certified Public Accountant. He has served Nativity on the Stewardship Committee, as a sponsor for the Seekers class and as an usher. He has volunteered on several non-profit boards in the community.



## STEEPLE SCHEDULE

*The Steeple* is published each 1st and 3rd Wednesdays.

To submit events or articles, you may bring them to the church office or email:

[gsommer@nativity-hsv.org](mailto:gsommer@nativity-hsv.org)

The deadline for the next issue is **Monday noon, November 3.**

### CLERGY & STAFF

**The Rev'd Dr. Andy Anderson**  
Rector

**The Rev'd Rusty McCown**  
Associate

**The Rev'd Bonnie McCrickard**  
Associate

**The Rev'd Jeannie Robison**  
Deacon

**Suzanne Purtee**  
Organist/Choirmaster

**Lane Tutt**

Adult Christian Formation

**William Blackerby**

Coordinator of Youth Ministry

**Barbara Bonner**

Children's Formation

**Mary Coe**

Assistant Children's Formation

**Audrey Clayton**

Nursery Coordinator

**John Buyse**

Property Manager

**Al Ford**

Sexton

**Sally Stockton**

Kitchen Coordinator

**Beverly Franklin**

Bookkeeper/Business Mgr

**Connie Gadowski**

Worship & Ministry Assistant

**Amy Baxter**

Assistant to the Rector

**Glenn Sommer**

Communications

**Prentice White**

Verger/Wedding Coordinator

### WARDENS' COUNCIL

**Lou Durnya** Sr Warden

**Frederick Lanier Jr** Warden

**Michele Hunter** Clerk

**Brenda Chynoweth** Treasurer

**Robert Mullins** Finance Chair

### AFTER HOURS EMERGENCY

A member of the clergy is *on call* each week. If you need assistance from a priest outside office hours, the priest on call will respond to your message.

The number to call *In Case of an Emergency Only* is 256-533-7007. All other calls should be directed to church phone 256-533-2455 and follow the prompts to leave a message for a priest to respond.

## Church of the Nativity, Episcopal

208 Eustis Ave. SE Huntsville, AL 35801

256-533-2455 Fax: 256-533-2374

[www.nativity-hsv.org](http://www.nativity-hsv.org)



A poster for Stewardship Commitment Sunday. The background is a dark, textured brick wall. On the left, a bright green diagonal banner contains the text "COMMIT 10 / 26" in black. To the right, the words "STEWARDSHIP COMMITMENT SUNDAY" are written in large, bold, yellow capital letters. Below this, the date "OCTOBER 26" is written in the same style. In the bottom right corner, there is a logo for "Walking the Way" featuring a white cross on a blue background with a path leading up to it.