

THE STEEPLE

The Church of the Nativity

October 1, 2014

Mission of the Church of the Nativity

God's family at the historic Church of the Nativity is joyfully and energetically committed to sharing Christ's love and healing by proclaiming the Good News of the Gospel through worship and service to the world.

We are People of the Way: Walking in the Way of Jesus

Walking in the Way of Stewardship



CHURCH
OF THE
NATIVITY,
EPISCOPAL

Est. 1843

Worship Schedule

(* Nursery available)

SUNDAY

7:45 a.m. Rite I
Holy Eucharist
Bibb Chapel

8:45 a.m.* Rite II
Holy Eucharist
Children's Chapel

11:00 a.m. * Rite II
Holy Eucharist

WEDNESDAY

12:00 noon

Holy Eucharist & Healing
(Bibb Chapel)

THURSDAY

6:00 p.m.

Holy Eucharist Rite II
Bibb Chapel

From the earliest days after Jesus' death and resurrection, we have been known as "People of the Way." The most distinctive thing about early Christians was that they took Jesus seriously when he said, "Come, follow me." Jesus invites us to follow him in the ways of self-giving love and a generous life of thanksgiving and sharing; a life of reaching out to others and including them in the way of love that Jesus taught and lived.

We hear about their remarkable story of growing in Christ's love as they followed in "the way" in the book of Acts. Influenced by the Apostle Paul's teaching, we hear these people of "the way" were turning the world upside down. What would it mean for people in Huntsville to say about us contemporary followers of Jesus at Nativity, "They are turning the world upside down!"

Our collective story at Nativity is revealed by our individual journeys of faith and how we individually, and then together, follow Jesus. You've heard me say it before, but let me say it again: If you don't know what road you are on, any road will do. But if you want to go somewhere specifically, you need to be on that road, be on the way that will get you there. Following Jesus, we realize God's kingdom is the destination. Are you on that road, going that way, on the way of Jesus?

Your journey on the way includes the stewardship of your time, talent and financial resources. During the month of October, we are devoting this time to being intentional about being on the way through the stewardship of our financial resources. One of the prayers of this season of stewardship is "The way is made by walking."

In order to grow closer to our destination of God's Kingdom in our lives and in this world, we will be walking that way. Are you walking? Or are you standing still in one place? Take a look at your giving to God's work through Nativity the past few years. Are you walking forward, or stuck in the same place? Or, have you perhaps taken a few steps backwards? Growing in our giving to God's work means we are on the road and moving ahead, we are getting closer to God's Kingdom. AND we are getting closer to God. Walking the way of Jesus changes us to be more like him....

The way is made by walking. Wherever you are on the way of Jesus through stewardship, take note and begin walking. If you have not been pledging, step out in faith and make one. If you are not yet at the point of tithing (giving 10% to God's work in the church), or if you have been stuck at the same level of sharing, determine where you are and then take steps to move forward. Take a look at where your sharing what God has blessed you with compares with how you give money other ways. Increase that pledge proportionally to get you where God asks you to be.

Moving out, notice God's blessings surrounding you. We have this incredible place of blessing, our family at the Church of the Nativity. Thanks be to God! We have ways to turn the world upside down through our life together, especially through our giving as we walk the way.

Andy +



October 5 — Canned meat, canned fruit, Spaghetti Sauce and noodles, peanut butter. Thanks for your generosity!

The Spiritual Development Committee presents

WEDNESDAYS IN OCTOBER

"Challenges of Big Churches—How do we stay in Community?"

5:15 pm Dinner (*by reservation*, 256-533-2455)

6:00 pm Guest Speaker

Oct. 1 — The Very Rev. Andrew Pearson, Dean of Cathedral of the Advent, Birmingham

Oct. 8 — The Rev. Glenn Conner, Sr. Pastor, First United Methodist Church, Huntsville

Oct. 15 — The Rev. Dr. Glenda Curry, Rector of All Saints Episcopal Church, Homewood, AL

Oct. 22 — The Rev. Hal Oakley, Pastor, Covenant Presbyterian Church -- Huntsville

Children's Corner

Oct 1 4:15 Treble Choir

4:45 Cherub choir

5:30 Supper and Games (nursery for 4 and under)

Oct 5 HAP Sunday

Fall Break, no children's chapel or church school

Oct 8 Fall Break, no children's choirs or children's programs

Oct 22 Wednesday night schedule resumes

Oct 26 Trunk or Treat 5 PM

Contact Barbara Bonner: bbonner@nativity-hsv.org.

The Daughters of the King invite
all the Women of the Church to hear
The Rev. Bill Winters speak on "Gospel Hospitality"
Tuesday, October 21

Lunch (prepared by Sally Stockton) will be served at
11:30am, with Fr. Winters' talk to follow.

Cost of lunch is \$7.00. Please call the church (256-533-2455) to make your reservation by noon on Monday, Oct 20, 2014.

If you have questions E-mail or call Caffey Litkenhous - cslitk2@me.com or 256-883-2668.



You're in the Store

Buy ONE more!

Nursery Families are beginning a new ministry.

Simply pick up an extra pack of diapers and wipes, drop off at the Nursery on Sunday. Collected items will be delivered to children in the Madison County Foster Care Program.

Of the almost 450 children in protective services in Madison County, approximately 1/3 are babies and toddlers. The foster parents only receive \$300 per month per child and are frequently middle or low income themselves. Diapers are a large expense, and these donations will help enormously. All sizes are needed.



**Thursdays
Through October**
3:00 pm—6:00 pm

A Taste of Greene Street

You're invited to a food-tasting party each Thursday evening in October at the Greene Street Market Store, 208 Eustis Ave. Each week the cuisine will feature food from the outdoor market and will be paired with complimentary and complementary wine. Hosted by GMS supporters, the tastings will run from 5:30 to 7 p.m. with farmers and vendors on hand to discuss their produce and products, which will be for sale at the store.

Come to the market early – October hours are 3 to 6 p.m. – and then come by the store for a snack, a glass of wine, and a good time.

INTERCESSION REQUESTS

We pray for those who are ill or recovering: Leigh Wahl, Elsie Olsen, Eileen Sullivan, Carla King, Harry Beazley, Nancy Colin Swenson, Gene Sullivan, Bill Dilworth, Lorene Dilworth, Ann Garnett, Katie Sanders, Brackin Clark, Barry Morton, Lynn Jones, Liam Mackey, Tazewell Mackey, Sherry Fry, James P. McGee, Aubrey Tycer

We pray for those deployed/serving with the Military: US Navy, Jesse Teal

We pray for the departed: Robert Devenish, father of Tom Devenish; Billye Galligher Kirkley, sister of Lucy Cotten; Charlene Kirk, Parishioner

We give thanks for birthdays of our children: (with apologies for omitting late September birthdays last Steeple)

9/19 Jefferson Retzke	9/19 Jack Doty	9/20 Caroline Curran	9/23 Sarah Cole
9/24 Maura Farrell	9/24 Rebecca McCoy	9/25 Van Dodgen	9/26 Alice Rowe
9/29 Emily Rowe	9/30 Meredith Walker	10/1 Hannah Page Clayton	10/4 Tessa Dollman
10/4 Huston Moring III	10/5 Anatasia Abrams	10/8 Laura Kate Evans	10/8 Forrest Webber
10/8 Patrick Rozar	10/9 Paxtyn Whitney	10/9 Sarah Whelden Hall	10/9 Anna Chilton
10/13 Ellie DeFiore	10/13 Chloe Parsons	10/14 Emily Ellison	

Welcome Glenn Sommer

Communications Director



It is a privilege to be the Communications Director at the Church of the Nativity. Sharing our story is an important part of who we are and I am glad to be a part of this.

Huntsville is now home after growing up in Phoenix. For my wife Camille, she grew up here so this is a homecoming. We have two daughters, Thea (9) and Diana (5) who enjoy anything with the arts.

Your ideas and comments are always welcome and appreciated. In person, by phone, or email, I look forward to your contributions becoming part of our story.

256. 533. 2455 x204

gsommer@nativity-hsv.org

NATIVITY PILGRIMAGE TO GREECE AND TURKEY:

Christian Church Foundations with the Apostle Paul's Missionary Travels and Early Church Developments in the Byzantine Empire

The Nativity Pilgrimage to Greece and Turkey to explore Christian Church foundations in those two ancient geographical areas of faith development and growth and where the Apostle Paul's influence was profound departs October 8. Father Anderson has been teaching the Zimmerman Bible Class on Sundays to share this experience with the wider parish. The Zimmerman Bible Study will look at Paul's Letter to the Romans in October and the Pilgrims will share their experiences from Athens, Meteora, Thessaloniki, Philippi, Istanbul, Ephesus, Corinth and other places Paul visited in the Zimmerman Class in November. Please keep our pilgrims in your prayers.

Chalice Bearer (LEM) Training

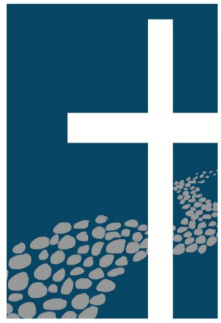
Fr. Anderson will hold training for those interested in becoming Lay Eucharistic Ministers on Sunday, October 5 following the 11:00 service. All confirmed members of the church are eligible. Let us know you are coming! Call Connie in the office. 533.2455

Upcoming Baptism Date

Contact Mother Bonnie to schedule, 256-533-2455. **Sunday, All Saints' Sunday, November 2** (deadline is Oct. 6).

Cookies for Kairos

Bob Serio and Michael Shipley will be serving on staff for Kairos #58 at Limestone Correctional Facility Oct 16-19. They would love Nativity to shower the Men in White with home made cookies or brownies. Remember no toppings or fruit and one dozen to a gallon zip lock bag. Cookie instruction sheets are in the church office. All cookies are due in the church office by Thursday Oct 16 at noon. Please keep Bob, Michael and all the men in white in your prayers for this Kairos weekend.



**Walking
the Way**

Stewardship Thoughts – *Is it stewardship time again?*

You may well be thinking the same thing....*is it stewardship time AGAIN?* Well, my friends, it's ALWAYS stewardship time! Or, more accurately, it's always GRATITUDE time! God is continually bestowing His grace on us and we should also be continually grateful for all of His many blessings.

We have had numerous opportunities to show our gratitude and *Walk the Way* with Christ. Sunday School for all ages began in full after Labor Day; our Inreach Ministry Fair in September highlighted numerous ways to serve those within our parish; and an exciting Outreach Ministry Fair will take place on October 19, complete with food trucks and representatives from dozens of outreach ministries supported by Nativity.

Soon we will have an opportunity to walk further down the way with Christ by returning a portion of the financial resources that God has so generously given us. You soon will notice various parishioners wearing bright green stickers proclaiming, "COMMIT 10/26." This is your reminder that we will receive pledge cards that day during a special liturgy at each service. You are encouraged to bring your completed pledge card that day and have it blessed during the ceremony.

We are also featuring ON-LINE pledging this year. Simply go to the Nativity website (nativity.dioala.org), click on the GIVING tab in the upper right corner, then choose PLEDGE NOW. If you wish to pledge on-line but still would like to have your pledge blessed at one of the services on October 26, there will be cards in each pew for you to denote that you have already pledged on-line. You can also pay your pledge through the electronic bill payment service provided by your bank. Please contact Beverly Franklin in the church office (256-533-2455) if you have questions about these processes.

If you have not been making a regular pledge to Nativity, there is no better time to start than right now. We hope that every household within the parish will make a pledge to support God's work through the Church of the Nativity in 2015. Please begin Walking the Way with us this year and show your gratitude for all of God's gifts.

If you have been pledging, but are not yet tithing or have not been increasing your pledge toward the tithe, consider devising a plan by which you can reach the tithe within 2-4 years. Increasing the amount pledged by 1-2% of your income each year will help you reach the tithe in a few short years. We THANK YOU for your pledge and want to offer you encouragement as you continue to Walk the Way.

If you have been tithing (or exceeding the tithe), THANK YOU for your most generous gift. You are an example for us all and truly know what it means to Walk the Way. Again, our most heartfelt thanks!

Yes, it's stewardship season again, but the more appropriate term is "gratitude season." Everything we have is a gift from God and He only asks that we give back a small portion of our time, talent, and financial resources for the building of His kingdom. It will be time soon to make our financial commitment for 2015...we hope your pledge will be a reflection of the grace and generosity that God has shown you.

Nativity Stewardship Ministry

Nativity makes it easy to e-pledge and e-pay!

How will you make and pay your pledge in 2015? Your Stewardship Ministry urges you to consider submitting your pledge on-line and then paying your pledge weekly or monthly through electronic banking. Here's how it works:

To e-pledge: open the Nativity website (nativity.dioala.org), then click on the GIVING tab near the top of the page. Choose PLEDGE NOW, then complete the form and submit

To e-pay your pledge: go to your bank's electronic banking site and set up Church of the Nativity as a payee. The address is 208 Eustis Avenue, Huntsville 35801. Put your name as the account number and set up payments to be submitted on a regular basis, generally weekly or monthly.

We will have a commitment ceremony and blessing of the pledge cards at the 7:45, 8:45, and 11:00 am services Sunday, October 26. If you have already made your pledge electronically, there will be cards in the pews on which you can note that you have already pledged, but would like your pledge blessed with the others. We hope you will consider electronic pledging via the Nativity website and automated pledging through your bank this year!



Acolyte Schedule October 2014

I hope I have been able to honor everyone's requests for the month of October—it's a little challenging due to the two weekends of Fall Break. If you happen to be attending church with your families and are not scheduled, do stop by to see if we could use a last minute substitute. Thank you all for your contributions to this important ministry at Nativity—we appreciate acolytes AND their parents who get them there for their services!

October 5

8:45 A/M Clay Sherrill

C Franklin Aldag, Allie Starnes
T Patrick Ahearn, Evelyn Warren
T Park Ellis, Van Dodgen
S Gillianne Sharp
AS Ireland Braudaway

11:00 A/M Dorrie Nutt

C Jordan Cozby, Emily Evans
T Elizabeth Evans, Chloe Parsons
T Luke Alison, Laura Kate Evans
S Steuart Evans
AS John Sadler Evans

Oct 12

8:45 A/M Nina Putt

C Meredith Walker, Jackson Anglin
T Clay Walker, Margaret Bryant
T Cameron Pinson, Paxtyn Whitney
S Ellie Walker
AS Hall Blake Bryant

11:00 A/M Mike Ward

C Emily Ellison, Savannah Watson
T Evan Ellison, Alice Malone
T Robert McCown, Anna Chilton
S Evan Ward
AS Molly Ward

Oct 19

8:45 A/M Clay Sherrill

C Windham Hunter, Alex Young
T Sidney Gunter, Parker Sanders
T Caroline Knight, Margaret Foster
S Katherine Hunter
AS Palmer Ford

11:00 A/M Dorrie Nutt

C Scott Louis Miller, Powell Stockton
T Ella Jane Duncan, Mary Kate Brooks
T Emery Windham, Jack Benton Stockton
S David DiFranco
AS Sims Windham

Oct 26

8:45 A/M Nina Putt

C Neill Luther, Kate Noble Hall
T Dylan Chenoweth, Forrest Webber
T Britt Webber, Joshua Huskey
S Sarah Whelden Hall
AS Leighton Luther

11:00 A/M Mike Ward

C Tindall Morring, Alison Taylor
T Huston Morring, Chris Laney
T Riley Kamelchuk, Laura Kamelchuk
S Bankston Creech
AS John Laney

MARK YOUR CALENDARS:

Make plans to have lunch with your Nativity family on Sunday, October 19. Food trucks and other vendors will be available following the Sunday School hour and the late service. Browse through the various outreach ministries and buy lunch from one of our local vendors. See you there!



What's the difference between you and God? God never thinks he's you."
-Anne Lamott, from *Help Thanks*
Wow: Three Essential Prayers

Nativity Blue Apron Hospitality for 11:00 Service, New Format, No Food!

Can you help out with the Blue Apron Hospitality following the 11:00 Service on Sunday? The only requirements are donning a blue apron and about 30-45 min. of your time. Cookies are provided by the Men's Breakfast Cooks, and ice water and coffee are provided by the church.

This important ministry needs you to greet newcomers and offer an opportunity for short fellowship and conversation with fellow parishioners following the service.

If possible we would like to ask each volunteer to sign up for a month, or 2 volunteers to split a month. That way your duty is done for the entire year!

We are covered through October. So if you can take a month or share a month with someone else please contact Mark Sutherland at Randsome7@gmail.com or 256-653-5917; or Valerie Chesney at valchesal@hotmail.com or 205-533-2440.



EYC Church of the Nativity

Youth Notes!

SUMMA Camp at Sewanee

No Sunday School and No EYC Sunday, October 5th

Have a safe, fun, and happy fall break, and we'll see you when Sunday School starts back on October 12th!

Guest Speaker on SUMMA Camp at Sewanee, Sunday, October 12th, 12:30 PM

The Rev. Cindy Fribourgh, associate director of SUMMA, the Student Theological Debate Society at Sewanee, will visit Nativity on Sunday, October 12th, to talk to interested youth and parents about SUMMA Camp 2015, a weeklong theological debate camp for students who will be in 9th-12th grades in the fall of 2015. Find out more about the camp [here](#). Mark your calendars and plan to come to Ridley Hall at 12:30 on Sunday the 12th!

EYC Sunday, October 12th, 5:30-7:30 PM

Our post-Fall Break EYC for all 7th-12th graders will be focused on creating care packages for Nativity parishioners who have moved on from high school and are away at college or starting their careers! Dinner at 5:30, program at 6:00, pick up at 7:30. Bring a friend to the LOFT!

Friends of Music presents...

Chamber Recital

Mac Phillips ~ Piano
Dorrie Nutt ~ Horn
Jeffrey Dortch ~ Violin
Charles Hogue ~ Viola
Heneta Billmeyer ~ Cello

Sunday, October 12th
5:00 pm

Church of the Nativity, Episcopal- 208 Eustis Avenue SE - Huntsville, Alabama 35801
256-533-2455 - www.nativity-hsv.org

Wonderful, Wonderful Camp McDowell

The first thing I would like to say is: THANK YOU
THANK YOU THANK YOU to all of the Nativity Family members who have opened their hearts as well as their wallets to support Bethany Village and for the building of Nativity Lodge. You should all be so very proud of being a part of this amazing project, I know I certainly am.



When Father Andy asked me to be a part of the campaign for Bethany Village along with Chris Whitney and Betty Hornsby, I told him I would have to think about it. To be honest, I was only a little familiar with Bethany Village and I wanted to find out more about it. Well, that is what I did and fell madly in love with this project. After listening to Bishop Sloan and Mark Johnson talk about what would happen at Camp McDowell with the building of Bethany Village they won my heart immediately. I knew 'I was in like Flynn.' Jane Brocato asked to join our committee after she heard them talk and we were thrilled. We have made a good team and we all feel truly blessed for being a part of this spectacular project and working with each other for such a worthwhile cause.

Camp McDowell is truly a beautiful place. Even if you have never seen it, you need to know how special it is and how Bethany Village is giving opportunities to people who would normally not get to attend camp and making camp a better place for those who have been attending for years and for those people who will attend in the future. Knowing this place will live on for our children, our grandchildren and their children's children is such a reassuring feeling. As quoted by Dr. Laura Fiveash, St. Thomas, Birmingham, "When I envision the Bethany project, I think of a place where ALL of God's children come and experience God's beautiful nature and love, a place where special needs children are cherished and accepted for who they are instead of who they are not."

I grew up a church camper at the Episcopal camp Bratton Green in Mississippi and have attended many functions at Camp McDowell. The first time my parents drove me to camp, like Betty Hornsby said in her article, "I didn't want to be there at all." I was much younger than Betty so my main problem was homesickness. There was a very concerned priest who made it his quest to win me over to stay. He told me if I could learn to say his name and where he was from I would not only get a prize, I could be his junior assistant. Winning a prize got my attention, BUT ...saying his name and where he was from was not so easy. I had to practice for 2 days before I got it correct. His name was FATHER VLOMICK from PASCAGOULA, MISSISSIPPI! My entire cabin became involved in helping me and I forgot all about being homesick. I will never forget that man's name as long as I live nor the campers who helped me.

Bethany Village will make Camp McDowell an even more special camp than it has been. We are so close to reaching our goal for building Nativity Lodge at Bethany Village. If you have not had an opportunity to make a pledge and have your name added along with the other names on the plaque that will be displayed in the Nativity Lodge, PLEASE join us in being a part of this fabulous project. Send your pledge in as soon as possible. Any amount is welcome and very much appreciated. ~ MEL FORD

Nativity House at Bethany Village—only \$70,000 more to make our goal of \$400,000.

WORSHIP SCHEDULE October 2014, published 9/17/14 (updated 9/22/14 by clg)

WEDNESDAY, October 1, HE

Service	Celebrant	Preacher	LEM
12 noon	Anderson		Mary Hendricks

THURSDAY, Thursday October 2, HE

Service	Celebrant	Preacher	
6:00 pm	Anderson		Don Lambert

SUNDAY, October 5, Seventeenth Sunday after Pentecost

Service	Celebrant	Preacher	LEM	Lector	Intercessor
7:45 am	Anderson	Anderson	Lea Ann Barnett	Lea Ann Barnett	Lea Ann Barnett
8:45 am	McCown	Anderson	Charlie Warren, Lane Mickle, Don Lambert	Lee Hicklen	Virginia Kobler
11:00 am	McCown	Anderson	Barbara Buice, Deborah Baker, Joan East	Ed Vaughn, Ronnie Rogers	Don Askins

WEDNESDAY, October 8, HE

Service	Celebrant	Preacher	LEM
12 noon	McCrickard		Deacon's Mass - Joan East

THURSDAY, October 9, HE

Service	Celebrant	Preacher	
6:00 pm	McCown		Don Askins

SUNDAY, October 12, Eighteenth Sunday after Pentecost

Service	Celebrant	Preacher	LEM (Anderson – out)	Lector	Intercessor
7:45 am	McCown	Bob Serio	Sue Johnson	Sue Johnson	Sue Johnson
8:45 am	McCown	Bob Serio	Joan East, Lee Hicklen, Pat Sampson, Lewie Bates	Elaine Hamner	Shirley Hale
11:00 am	McCown	Bob Serio	Peter Cobun, Hanns Billmayer, Sam Porter, Don Lambert	Sandy Brown, Mike Brown	Adalene Bledsoe

WEDNESDAY, October 15, HE

Service	Celebrant	Preacher	LEM
12 noon	McCown		Marilyn Lands

THURSDAY, October 16, HE

Service	Celebrant	Preacher	
6:00 pm	McCown		Sally Ann Culver

SUNDAY, October 19, Nineteenth Sunday after Pentecost

Service	Celebrant	Preacher	LEM (Anderson – out)	Lector	Intercessor
7:45 am	McCown	McCown	Ken Barnett	Ken Barnett	Ken Barnett
8:45 am	Holland-Shuey	McCown	Robert Dunn, Mike Ward, Warren Vann	Ed Greene	Jim Douthit
11:00 am	Foreman	McCown	Rob Cozby, Walter Thames, Marilyn Lands	Debbie Collette, David Collette	Martha Joffrion

WEDNESDAY, October 22, HE

Service	Celebrant	Preacher	LEM
12 noon	Holland-Shuey		Mary Hendricks

THURSDAY, October 23, HE

Service	Celebrant	Preacher	
6:00 pm	McCrickard		Don Lambert

SUNDAY, October 26, Twentieth Sunday after Pentecost

Service	Celebrant	Preacher	LEM	Lector	Intercessor
7:45 am	Anderson	Steward-	John Hendricks	John Hendricks	John Hendricks
8:45 am	Anderson	Steward-	Virginia Kobler, Lane Mickle	Jim Douthit	Clay Sherrill
11:00 am	Anderson	Steward-	Rich Goodwin, Don Askins	Martha Joffrion, Robbie Shafer	Sally Ann Culver

WEDNESDAY, October 29, HE

Service	Celebrant	Preacher	LEM
12 noon	Anderson		Don Askins

THURSDAY, October 30, HE

Service	Celebrant	Preacher	
6:00 pm	McCrickard		Virginia Kobler

USHERS

8:45	Dale Moore, Beverly Farrington, Pat Goodson, Austin King, Harvey Pride, Drew Tutt, Anna Warren
11:00	Jeff Dortch, Benita Hayes, Lou Durnya, Marilyn Lands, Teague Smith

ALTAR GUILD

4	Judy Heacock, Sue Johnson, Rose Anne Shearer, Beth Pugh, Lea Ann Barnett
11	Sara Little, Nancy Colin, Wanda Cobb, Debbie Joyner, Judy Vann, Sophia Rowe
18	Caffey Litkenhous, Emily Moody, Alice Lanier, Renée Elliott, Gail Brown
25	Louise Reynolds, Laura Innes, Mary Johnson, Jewell Reynolds, Flo Stockton, Anne Carter

CLERGY ON CALL SCHEDULE

September 29 – October 5	October 6 - 12	October 13 – 19	October 20 – 26	October 27 – November 2
Anderson	McCown	McCrickard	McCown	Anderson

Vestry Nominations Slate for 2015 to be presented at Annual Parish Meeting,

November 2, 10:00 am



MARGARET DEVENISH

Margaret became a member of Nativity in 1986 when she and her husband, Tom returned to Huntsville, his childhood home. She and Tom have two grown sons and their last two Newfoundland dogs. She participates in the Stephen Ministry, Eucharistic visitor program, Cursillo and has traveled to Haiti with the medical mission team. Margaret has recently retired and is enjoying sewing and tutoring math at the Adult Learning Center.



ROBERT DUNN

Robert Dunn grew up as an active member of St. Paul's Episcopal Church in Mobile, AL. He attended the U.S. Military Academy graduating in 1975 and served for almost 25 years in the U.S. Army. He was active in many military and civilian Episcopal communities while on active duty. In addition to his BS from West Point, he has a Masters of Engineering and an Engineer degree from the University of Florida. Robert and his wife, Kaaren, moved to Huntsville from Atlanta in 2000 when he retired from the Army and began attending Church of the Nativity. At Nativity, Robert is in his second year of EfM, serves as a Lay Eucharistic Minister, Table Leader for Seeker's Class for past two years, Cursillo, and Blue Apron Greeter during the summer. In 2004, Robert was one of the founders of KAYA Associates, Inc. Robert and Kaaren have three children Sarah (25), Elizabeth (24), and Andrew (20).



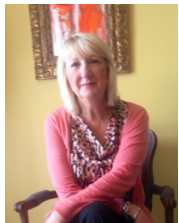
LEE HICKLEN

Lee has been attending Nativity since 2004 and was confirmed in 2010. He is currently serving as Chair of the Outreach Committee, and also as a LEM, Lector, LEV and Intercessor. He represents Nativity on the Huntsville Assistance Program where he is also Treasurer. Lee chose to attend Nativity and become an Episcopalian after serving as Board Member, Interim Pastoral Leader and Deacon at several Metropolitan Community Churches for over 30 years. He holds a Bachelor's and Master's Degree in Music Education and Percussion Performance from Louisiana State University, and is a member of several local musical ensembles.



CHAD HINTON

Chad has attended Nativity since 2007. He and his wife Vicky Rush Hinton were married at Nativity in 2000 and have 2 daughters Vivian and Alice Mae. Chad joined the Episcopal Church in 2004, and prior to that spent a great deal of time volunteering with youth ministry in the Diocese of Alabama while his wife Vicky served as a Youth Ministry and Christian Formation Director for both St. John's Decatur and St. Thomas Huntsville. Chad has served as a volunteer in the WoRM, Men's Breakfast group and Vacation Bible School. He has also served as a member of the program staff for multiple summer sessions at Camp McDowell. Chad has worked for Lockheed Martin for 14 years as an IT Project Manager and is a small business owner of the popular mobile food cart Rocket Dogs. Chad is an active member of the community and has served as a volunteer and in leadership positions with organizations like Leadership Huntsville, Sci-Quest Hands on Science Center, The Arts Council, Salvation Army and Mt. Springs Pool.



LINDA WATTS

Linda and her husband, Steve, have 4 children and 5 grandchildren. She has been a member of Nativity for 7 years. At Nativity, Linda is a member of the Altar Guild and the Wedding Guild. She coordinated volunteers the past 2 years for Wednesday Night Suppers in October and during Lent. She is also starting her second year of EFM. Linda attended Auburn University and received her BA degree from the University of Alabama in Huntsville. She has been employed at Raymond James Financial for the past 13 years where she works in several support staff positions.



BRANDON SMITH

Brandon Smith is a lifelong Episcopalian having grown up at Nativity and St. Matthews in Madison, AL. He is a graduate of the University of Alabama which is where he met his wife, Megan. Brandon and Megan have lived in Huntsville and been members of Nativity since marrying eleven years ago. They have two daughters, Matilda (6) and Piper (2). Brandon holds a Masters of Accountancy from the University of Alabama in Huntsville and is a Certified Public Accountant. He has served Nativity on the Stewardship Committee, as a sponsor for the Seekers class and as an usher. He has volunteered on several non-profit boards in the community.

Stewardship tip of the week

Take Steps toward a Poison-Free, Natural Lawn

Lawns sometimes get bad press—and not undeservedly. They use a tremendous amount of water and gasoline, and they pollute streams and other water resources with herbicide- and pesticide-laced runoff. **But it doesn't have to be that way.**

These tips, ranging from “easy” to “better” to “best” show how you can move toward a non-polluting, naturally sustainable lawn.

EASY STEPS

Tune up your lawnmower at least once per season or after 25 hours of mowing.

A well-tuned mower is more efficient, uses less gasoline, and pollutes less.

During dry months keep your lawn tall—as high as three inches, depending on the grass type.

The longer the grass, the more roots the plant can support and the less water it will need. A taller lawn also shades the ground, keeping it cooler so that weeds are less likely to germinate.

Water between 5 a.m. and 10 a.m.

Watering in the morning, when the sun is low, winds are calm, and temperatures are cool, ensures that the water doesn't evaporate before it gets to your lawn. Watering in the middle of the day isn't efficient because the weather is hotter and windier; watering in the evening means the lawn stays wet all night, inviting fungal diseases.

If you have an irrigation controller and water is running off and not soaking in, set your controller to water in two shorter periods for the same total length of time.

Some areas have clay soils, which do not allow water to soak in quickly. By breaking up your watering time, you allow the water to soak into the ground before adding any additional water, eliminating runoff.

Adjust sprinkler heads to prevent water from running onto paved surfaces.

Whenever possible keep the water where you want it—on your lawn, not the pavement.

Fertilize by spreading a one-inch layer of compost over your lawn in spring and fall.

Chemical fertilizers often kill off beneficial creatures such as earthworms, which produce castings that feed the lawn. The compost will feed the lawn and improve the soil so that it can hold more water and support more subterranean flora and fauna.

Add some clover to your grass.

Having some clover in your lawn will feed it and keep it green. Clover fixes nitrogen from the air, making it available to your lawn in the soil.

Use cornmeal gluten on your lawn.

Cornmeal gluten, which is about 10 percent nitrogen by weight, is a natural fertilizer and pre-emergent weed preventative that's usually applied in the spring and fall. According to garden writer Ann Lovejoy, 20 pounds of cornmeal gluten per 1,000 square feet will add one to two pounds of nitrogen to your lawn.

Better Steps

Cut your grass with a mulching mower.

Mulching mowers cut the grass into tiny bits and leave them on your lawn. Grass cuttings contain lots of nitrogen, as much as two pounds per square foot, and feed your lawn as they decompose. A mulching mower will also save your back because you don't have to bag and dump clippings into your compost pile. You may be able to buy a mulching blade for your existing mower instead of buying a whole new push mower.

Adjust your irrigation controller and check for leaks in your irrigation system once a month during the dry season.

Most people over-water. Adjusting your system every month ensures you give your lawn only the water it absolutely needs—about one inch per week.

Add an automatic shut-off to your irrigation system to turn it off when it's raining, or install an evapotranspiration (ET) controller.

Turning off your irrigation system when it's raining is an obvious water saver. An ET controller (also known as a “smart” controller) will go one step further—precisely adjusting your irrigation system depending on the outside temperature and amount of precipitation.

Planning for Fall



Continued on next page

Stewardship tip (Continued)

Hand pull and dig out larger weeds, instead of spraying herbicides.

Herbicides can kill the good bugs in the soil and run off from lawns during irrigation, polluting bays, streams, and other bodies of water. Hand pulling is safer and allows you to use those greens. Dandelion leaves in the early spring are tasty and a good source of vitamins.

If you need a new lawn, start it from seed.

The resources required to bring a bag of seed to your house are far less than having a truck drop off a load of sod. Also, most sod comes with awful green plastic netting on the back to keep the sod together. This netting rips into pieces when you dig or weed, and is tedious to remove if you ever decide to replace your lawn.

And a “Best Step” suggestion:

Make your lawn only as big as you need it to be.

Lawns use lots of resources, but they are worth it if you use them. Lawns are one of the best play surfaces available. A lawn of about 1,000 square feet is just big enough for a game of catch, croquet, or tag, while the national average is over 8,000 square feet, according to *Grounds Maintenance* magazine. You can also cut back the lawn area by creating natural spaces in your yard using wildflowers to create a meadow area, attracting birds, butterflies and other insects.



Blessing of the Animals—September 28, 2014

STEEPLE SCHEDULE

The Steeple is published each 1st and 3rd Wednesdays.

To submit events or articles, you may bring them to the church office or email:

gsommer@nativity-hsv.org

The deadline for the next issue is
Monday noon, October 13.

CLERGY & STAFF

The Rev'd Dr. Andy Anderson
Rector

The Rev'd Rusty McCown
Associate

The Rev'd Bonnie McCrickard
Associate

The Rev'd Jeannie Robison
Deacon

Suzanne Purtee
Organist/Choirmaster

Lane Tutt

Adult Christian Formation

William Blackerby

Coordinator of Youth Ministry

Barbara Bonner

Children's Formation

Mary Coe

Assistant Children's Formation

Audrey Clayton

Nursery Coordinator

John Buyse

Property Manager

Al Ford

Sexton

Sally Stockton

Kitchen Coordinator

Beverly Franklin

Bookkeeper/Business Mgr

Connie Gadowski

Worship & Ministry Assistant

Amy Baxter

Assistant to the Rector

Glenn Sommer

Communications

Prentice White

Verger/Wedding Coordinator

WARDENS' COUNCIL

Lou Durnya Sr Warden

Frederick Lanier Jr Warden

Michele Hunter Clerk

Brenda Chynoweth Treasurer

Robert Mullins Finance Chair

AFTER HOURS EMERGENCY

A member of the clergy is *on call* each week. If you need assistance from a priest outside office hours, the priest on call will respond to your message.

The number to call *In Case of an Emergency Only* is 256-533-7007. All other calls should be directed to church phone 256-533-2455 and follow the prompts to leave a message for a priest to respond.

Church of the Nativity, Episcopal

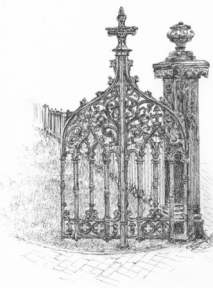
208 Eustis Ave. SE Huntsville, AL 35801

256-533-2455 Fax: 256-533-2374

www.nativity-hsv.org

COMMIT

10/26



ALL SAINTS' MEMORIAL DEDICATIONS

All Saints' Sunday, November 2, 2014 is a splendid time to honor your loved ones by making a memorial gift in their memory. Your gift supports the purchase of annual and perennial plantings, shrubbery, and trees that help make the garden and our church grounds one of Huntsville's most beloved spots for respite and contemplation. Please make your donation by Sunday, October 26 to be included in the special All Saints' Sunday Memorial Service insert. Checks should be payable to Church of the Nativity with annotation, Memorial Garden Fund.