

THE STEEPLE

The Church of the Nativity

February 16, 2011

The mission of the Episcopal Church of the Nativity, as part of the family of God, is to proclaim and spread the word and work of God through Jesus Christ our Lord, in the unity of the Holy Spirit, by Eucharistic worship and by ministry to the world.

Gospel Hospitality in the Diocese of Alabama and at Nativity

This past weekend, your clergy and parish lay delegates and alternates attended our Diocese's 180th annual convention held at St. Luke's Church in Birmingham. The theme was "Gospel Hospitality." It is always great to be with our Alabama Episcopal family. We see how positive our mission is throughout the diocese. We claim a rich heritage; we see a hopeful future.

The good news and the bad news is that we are one of the four vibrantly growing dioceses in the Episcopal Church. Nativity is thriving and part of this growth because we are intentional about living and sharing the Gospel of Jesus Christ. Bishop Parsley's address captured the spirit of who we are and the challenge God is ever extending to us. Let me share part of what he said:

We can easily think of hospitality as denoting good home cooking, rocking chairs on the porch, and sweet tea and congeniality. We Southerners know about such hospitality, don't we? And it is a good and gracious thing, as far as it goes.

But "Gospel Hospitality" goes farther. It is much more robust and radical. Jesus' hospitality extended not just to his friends but to the sinners and outcasts of his day. He shared table fellowship with those on the margins and those considered unrighteous... He spoke about the feasts of God's kingdom where everyone was welcome, not just the invited guests but those from the highways and byways. Jesus said "love your enemies, as well as "love one another" (which sometimes can be harder than loving our enemies!). On the cross we beheld his life transforming love as he stretched out his loving arms to all, even those who crucified and rejected him - and indeed to the sinful and broken ones of every time and place... even the likes of us.

The cross is God's ultimate hospitality, a saving embrace of mercy and loving kindness for the whole world. Desmond Tutu once described it this way:

There is a movement at the heart of things to reverse the awful centrifugal force of alienation, brokenness, division, hostility and disharmony. God has set in motion a centripetal process, a moving toward the Center, towards unity, harmony, goodness, peace and justice; one that removes barriers. Jesus says, 'when I am lifted up from the earth I will draw everyone to myself; as he hangs from his cross with out-flung arms, thrown out to clasp all... None is an outsider, all are insiders, and all belong in one family, God's family, the human family.

That is Gospel Hospitality. It is the deep meaning of the Incarnation and the Cross. We are a continuing part of this great movement of healing and reconciliation. Our churches are meant to live this cosmic embrace and make God's expansive love real. In the 1950's J.B. Phillips famously said "your God is too small." Today I suggest that the danger is that "your church is too small." We need to be as large as Christ's embrace. And that is large indeed.

From Bishop Henry Parsley's Address, Diocese of Alabama 2011 Annual Convention

The Church of the Nativity offers Gospel Hospitality. Claiming our place in God's family, we welcome all, "wherever you are on your spiritual journey." In this world where people find it easy to show hostility to others, at Nativity we recognize God's ever expanding and widening mercy. We do not shrink back. Jesus' life and parables invite us to deliberate attention and action in showing God's love. How are you responding daily to that invitation?

This parish church is surely a place of God's presence and love because we have individually claimed our corporate identity as the body of Christ. We are individually and together Christ's body, the temple of the Holy Spirit. May God continue in us the work that Christ begun. What a sacred trust has been given: ***The Lord is present...How awesome is this place. This is none other than the house of God and this is the gate of heaven!***

Andy +



CHURCH
OF THE
NATIVITY,
EPISCOPAL

Est. 1843

INSIDE THIS ISSUE

Site Safety Plan

Financials

TOHG February 22

Intercession Requests

Give up for Lent!

New Support Group

Trip to Opera
Birmingham

Just Do It!

Parish Weekend
Registration Form

Rabbi Shapiro at
Nativity, February 26

March Worship
Schedule

PARISH NEWS AND EVENTS

Capital Campaign Implementation Board Report: Restoration Update

Scaffolding installation for the steeple and altar end of the church has been completed for the roofing project. As a result of weather delays, the goal to complete the steeple project before Palm Sunday, April 17, 2011 is unlikely. The roof above the altar area should be completed in March. The nave upper and lower roofs will start on May 23rd and should be completed by the end of August.

The masonry restoration is near completion on the church and bell tower. The buttress cap painting has started. Work has been temporarily suspended until weather allows painting and pointing to be continued.

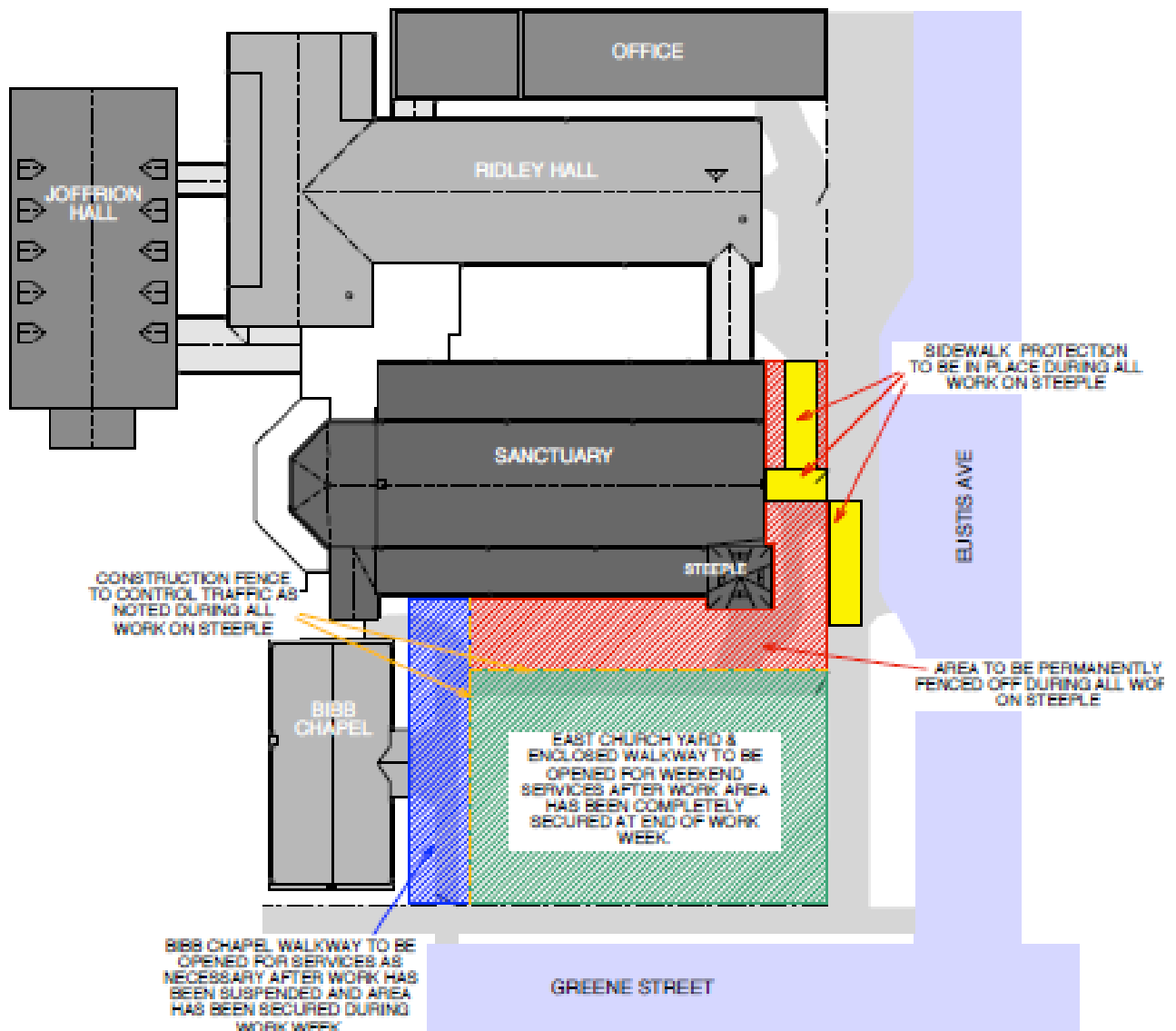
The interior restoration of the church has started as can be seen with the first phase, removal of the fabric, "wallpaper." The second phase, repair of the wood ceiling/structure and repair of plaster followed by painting is planned during the summer.

The "Site Safety Plan" illustrates the areas with limited access for safety purposes during the steeple roof project. Please observe and obey barricades and detours. Should you notice anything that appears to be a safety hazard, please inform Loch, Skipper, or John Buyse. If you have any questions, do not hesitate to give Skipper Colin or Loch Neely a call.

Skipper Colin

SITE SAFETY PLAN

Noblin & Associates, L.L.C. Consulting Engineers



PARISH NEWS AND EVENTS



TOP OF THE HILL GANG sponsors events open for all to participate:

- Don't miss this month's Top of the Hill Gang Luncheon. Our featured speaker is Ginny Langbehn from Hospice Family Care, the only non-profit hospice in our city. Hospice had changed over the years. Ms. Langbehn will talk about those changes and what Hospice Family Care offers now. It's sure to be an important give-and-take with information that's good to know at any age.

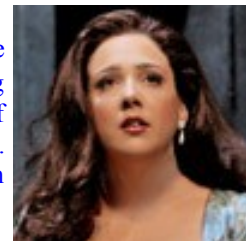
Date: **Tuesday, February 22, in Ridley Hall**

Time: 11:30 AM social hour and luncheon served at 12:00 Noon Cost: \$8.00

Reservations: call the office at 256-533-2455 by Monday, February 21

SUNDAY, MARCH 20 trip to Opera Birmingham

"Alabama's own Susanna Phillips returns to Birmingham to debut another leading role—the tour de force title role of Lucia in Donizetti's psychological thriller. Set in the misty moors of Scotland, this tale of feuding clans, forced marriage, secret love, jealousy...and madness...boasts some of the most famous music in all of opera. From the mad scene and the famous sextet, Lucia features bel canto—beautiful singing—at its best. Come hear Miss Phillips' role début before she takes it to one of the world's most prestigious opera houses in the following season!"



- Chartered bus will leave Nativity parking lot at 11:00 a.m. Cost is \$55 which includes bus fare, boxed lunch from Jason's Deli, and opera ticket. (Dutch Treat dinner after opera.) FULL PAYMENT required at time of reservation. See Connie in the church office.

The Sacred Art of Lovingkindness with Rabbi Rami Shapiro to be held at Nativity, February 26, 8:30 a.m. until 4:00 p.m. Sponsored by Church of the Nativity, Interfaith Mission Service, and Temple B'nai Sholom.

With candor, wit, and wisdom Rabbi Shapiro shows you that by choosing to act out of love rather than fear, with kindness rather than anger, you can transform how you perceive the world and ultimately lead a more complete spiritual life.

Cost for the workshop and lunch is \$30. Please register by noon Friday, February 25 by calling 256-533-2455. We will meet in Ridley Hall at 8:30 for registration, coffee and Danish then onto Bibb Chapel for the workshop, lunch will be served in Ridley Hall. For more information contact The Rev'd Brad Landry or Marilyn Lands.

Support Group offered by The Vine Pastoral Counseling Center: Surviving Suicide of a Loved One.

Coping after a suicide can be difficult because of the complicated emotions. Our mission with this group is to offer encouragement and support to people who are grieving after the tragic loss of a loved one. We will share our struggles, utilize educational resources, share coping strategies, consider biblical texts and be led in prayer. We will utilize our faith to bear one another's burdens as we seek healing.

The group will begin Monday, March 7 from 11:45-1:00 in the Banister Room at The Church of the Nativity and will continue every first Monday of the month after that in the same location. The group will be led by Dr. Amanda Ragland of The Vine and by Jane Troup, volunteer and member of Church of the Nativity. Dr. Ragland is a Licensed Marriage and Family Therapist and Certified Pastoral Counselor. For more information, please contact Amanda Ragland at 256-461-8580, vine-ministry@vinepcc.com or Jane Troup at 256-508-8801.

LOOK FOR THE GRAY NAMETAGS

Have you got questions about something at Nativity? Concerns? Do you want to make a suggestion? Do you want to let us know about some program you really like and want to see continued? **Look for the gray vestry nametags.** Your **2011 Vestry** is here to help you and we can do it best if we know what you think and want. We want to hear from you.



The Mission Guild will meet Monday, February 21

at the home of Traudel von Spakovsky, 316 Lady Jane Court, SW with Jimmy Lou Horton as co-hostess. Susan Smith will speak on the Aquarius Club and Operation Santa Claus. Remember to bring Bingo prizes for Aquarius Club. Newcomers are welcome, please contact Sue Rowan 256-536-1811 or Mary Vann 256-881-2927 if

Dear Nativity Agents of Grace,



We have several volunteer request where your time and talents are needed.

• We are in need of Popcorn Poppers for Ridgecrest School on Feb 25 and April 29. We need 2 poppers for each date. The job entails measuring the popcorn, oil, salt into the popper, filling individual bags and count out the number of bags for each classroom and put the bags for each class in a large plastic bag for pick-up or delivery. You will be there from 8 am to 11 am (about 3 hours). If you can help with this request please let me know and I will forward your reply to Sarajane Tarter.

- We have a continuing need for volunteer reading and math buddies at RidgeCrest School. Again, I will forward any response to Sarajane.
- We have a need at the Adult Learning Center for reading and math tutors. This would be a 2 hour a week commitment for tutoring in either reading or math. The Adult Learning Center is open Tues-Thurs 9-3 If you can help with this need I will forward your interest on to Deborah Baker Meinecke.

JUST DO IT

Michael Shipley , Jan/Feb Arch Agent
MichaelLShipley@aol.com or 256-325-1522

DID YOU KNOW? You can go to the Nativity Website and click on Diocese of Alabama link to read, watch and listen to the happenings of the 180th Annual Episcopal Diocesan Convention. Check it out!

READ, WATCH, LISTEN Bishop Parsley's Address

WATCH Bishop Sloan's Address

WATCH Bishop Gulick's Eucharist Sermon

READ Actions & Resolutions; Ministry Reports

View—Photo Album 1 (by Bill Dixon) and Photo Album 2 (by Dave Drachlis)

FINANCIAL CORNER

2011 Pledges by 02/13/2011

\$ 500 or <	43
\$501 - \$999.99	48
\$1,000 - \$2,999.99	174
\$3,000 - \$4,999.99	77
\$5,000 - \$9,999.99	51
\$10,000 - \$14,999.99	9
\$15,000 - \$24,999.99	7
\$25,000 or >	3
Total Number of Pledges	412
Total Dollar Amount of Pledges	\$1,230,434.26
Average Pledge	\$2,9896.49

Parish Financial Report Period Ending 01/31/2011

	CURRENT MONTH	BUDGET for PERIOD	ACTUAL YTD	BUDGET YTD
Pledges				
Received	\$83,192.75	\$99,620.88	\$ 83,192.75	\$ 99,620.88
Plate	\$ 9,262.60	\$ 4,610.38	\$ 9,262.60	\$ 4,610.38
Other				
Revenues	\$ 3,952.62	\$ 9,169.74	\$ 3,952.62	\$ 9,169.74
TOTAL	\$96,407.97	\$113,401.00	\$ 96,407.97	\$ 113,401.00
Diocesan,				
School of				
Theology,				
Outreach	\$ 1,629.63	\$ 21,548.99	\$ 1,629.63	\$ 21,548.99
Personnel	\$ 70,409.77	\$ 62,558.37	\$ 70,409.77	\$ 62,558.37
Other				
Expenses	\$ 27,458.15	\$ 29,293.97	\$ 27,458.15	\$ 29,293.97
TOTAL	\$ 99,497.55	\$113,401.33	\$ 99,497.55	\$ 113,401.33
NET	\$ (3,089.58)	\$ (0.33)	\$ (3,089.58)	\$ (0.33)



PARENTS with Young Children do you need an evening out? Need an evening to hire the sitter and enjoy other young parents and have adult conversation? Please join Nativity's Young Parent Mixers FRIDAY, FEBRUARY 18, 7:00 p.m. at the home of Madeline and Robert Mullins (1203 Tunlaw RD 256-534-2914.) BYOB and an appetizer to share. YPMixers meet each month in parishioner homes. If you have questions about Mixers please contact Elizabeth Foster (efoster@nativity-hsv.org)

Sunday, February 20 – 5:00 p.m. Friends of Music at Nativity present a Violin & Piano Concert

featuring Michael Brown, violin and Mac Phillips, piano,
playing pieces by composers Bach, Brahms, Elgar & Ravel.

This concert is free (donations requested), open to the public and handicap accessible.

Church of the Nativity, 208 Eustis Avenue, Huntsville.

Information 256-533-2455, ext. 216 or www.nativity-hsv.org

STEWARDSHIP OF CREATION TIP COMPOSTING 101 Part 1

Composting is the purposeful biodegradation of organic matter, such as yard and food waste. The decomposition is performed by micro-organisms, mostly bacteria, but also yeasts and fungi. The size of the material is a factor in determining compostability, and mechanical particle size reduction, such as shredding leaves with your lawn mower, can speed the process.

Composting can be done "gourmet" style, requiring more effort, with quick results—or can be done more casually. Both ways will have a positive effect on the environment and produce usable compost. It just depends on how much time you want to spend with your compost pile and how fast you want the compost.

Composting upcycles organic kitchen and yard waste and manures into an extremely useful humus-like, soil end product, permitting the return of vital organic matter, nutrients, and particularly bacteria, that are vital to plant nutrition to the soil.

Composting can be practiced in most backyards in a homemade or manufactured composting bin or simply an open pile. Businesses, schools, and other facilities can also easily compost.

Homemade bins can be constructed out of scrap wood, chicken wire, or even old garbage cans (with holes punched in the sides and bottom).

Ingredients:

While a multitude of organisms, fungus and bacteria are involved in the overall process, there are four basic ingredients for composting: 1) nitrogen, 2) carbon, 3) water and 4) air. Composting is a lot like cooking, and the easiest compost recipe calls for blending roughly equal parts of green or wet material (which is high in nitrogen) and brown or dry material (which is high in carbon). Simply layer or mix these materials in a pile or enclosure; chop or shred large pieces to 12" or shorter. Water and fluff to add air. Then leave it to the microorganisms which will break down the material over time.

Nitrogen

Green materials such as grass clippings and landscape trimmings are ideal sources of nitrogen for composting. Vegetable and fruit trimmings and peels also provide nitrogen. To reduce the potential for pests or odors, avoid using meat or dairy scraps.

Carbon

Brown (dry) yard and garden material such as dry leaves, twigs, or hay can provide the carbon balance for a compost pile. Chop or shred large pieces to 12 inches or shorter (thick, woody branches should be chipped, ground up, or left out

Water

One of the most common mistakes in composting is letting the pile get too dry. Your compost pile should be moist as a wrung-out sponge. A moisture content of 40 to 60 percent is preferable. To test

for adequate moisture, reach into your compost pile and grab a handful of material and squeeze it; if a few drops of water come out, it's probably got enough moisture, if it doesn't, add water. When you water, it is best to put a hose into the pile so that you aren't just wetting the top. You can also water as you are turning the pile. During dry weather, you may have to add water regularly. When rainy, a properly constructed compost pile will drain excess water and not become soggy.

Air

The bacteria and fungus that are in your compost pile need oxygen to live and work. If your pile is too dense or becomes too wet, the air supply to the inside is cut off and the beneficial organisms die. Decomposition will slow. To avoid this and speed the process, turn and fluff the pile with a pitchfork often, perhaps weekly. You can also turn the pile by just re-piling it into a new pile; many composting bins make this easy to do by coming apart so you can easily re-pile the old pile back into the bin.

Size

Ideally, the compost pile should be at least three feet wide by three feet deep by three feet tall (one cubic yard). This size provides enough food and insulation to keep the organisms warm and happy and working hard. However, piles can be larger or smaller and work just fine if managed well, and, as stated previously, simply having an open pile works also.

More next time in Part 2

NATIVITY CHRISTIAN FORMATION CLASSES

SUNDAY MORNING CHRISTIAN FORMATION CLASSES 10:00 a.m. (aka Church School)

The Seekers' Class

Bibb Chapel

Clergy and lay members of our parish will be leading these classes designed to include church history, our prayer book and hymnal, our worship practices and etiquette (like when to kneel or bow or make the sign of the cross!), and our views about scripture and the sacraments. Classes will also describe the many varieties of ministry opportunities available in the parish.

The Zimmerman Bible Study Class

Joffrion Library

Join us each week as we explore the Gospel according to Mark. The Zimmerman Class has been a Sunday morning Bible Study since 1947, when it was first established by Anna Zimmerman. The class is led by a diverse teaching team.

Prayer for Us All

Ridley Hall

"Be joyful always, pray continually, give thanks in all circumstances, for this is God's will for you in Jesus Christ."

Presenters: February 20, Fran McKendree; February 27, Lisa and Frank Caprio, March 6, John Turner; March 13, Haiti Medical Mission Team; March 20, Andy Anderson (The Sabbath as Prayer)

The Heartbeat of God book by Presiding Bishop Schori

Joffrion 2 West

THE SOUL AND RELATIONSHIPS: *Dancing with Rumi on the Mystic Path*

Choir Room

Youth Christian Formation Classes

Grades 7-8

Ridley 2nd Floor

Grades 9-12

Joffrion 3rd Floor

Children's Christian Formation Classes

Nursery

Joffrion 1st Floor

Godly Play (3 and 4 year olds)

Angel Lane

WoRM (K-Grade 4)

Angel Lane

Club 56 (Grades 5 & 6)

Ridley 2nd Floor

WEEKDAY MORNING & EVENING CHRISTIAN FORMATION CLASSES

MONDAY

Young Adult Small Group

7:00 p.m.

Contact Brad Landry

TUESDAY

Centering Prayer

5:30 p.m.—7:00 p.m.

Bibb Chapel

WEDNESDAY

• Men's Bible Study led by Father Anderson

7:15 a.m.

Library

• The Good Book Women's Bible Study

1:00 p.m.

Library

• Nights at Nativity *

See schedule below

Come to dinner (5:15 p.m.) for fellowship with your families and friends at Nativity then onto study (6:00 p.m.)

Nursery opens at 5:30 by reservations only. Dinner and nursery reservation no later than Tuesday noon each week.

Classes available through March 2:

- Libba Walker Bible Study in Library
- Men's Bible Study (Wired Word) with Brad Landry in Joffrion 2 West
- Seekers class with Fr Anderson in Banister Room (make-up classes, video check-out)
- Children and Youth Classes

March 9 – Ash Wednesday Services: 7:00 a.m. in Bibb Chapel; 12:00 p.m. Bibb Chapel with soup lunch in Ridley; 6:00 p.m. Service for adults and teens in church; Service designed for children in Chapel

March 16 through April 13: 5:15 p.m. dinner, 6:00 p.m. Lenten Speakers (see speakers biographies) Reservations for dinner and nursery by Tuesday noon each week.

THURSDAY

• Reflections Bible Study*

9:30 a.m. (nursery by reservations)

Joffrion 2 East

• Centering Prayer

12:00 noon—12:45 p.m.

Bibb Chapel

PLEASE CALL THE CHURCH OFFICE FOR RESERVATIONS OR MORE INFORMATION 256-533-2455

REGISTRATION DEADLINE MONDAY, FEBRUARY 21

Nativity's 7th Annual Parish Weekend on March 25-27 @ Camp McDowell

Registration for Parish Weekend continues. Please complete the form below and return it with payment (checks payable to Church of the Nativity annotated *Parish Weekend*) to: Church of the Nativity, ATTN: PARISH WEEKEND, 208 Eustis Avenue, Huntsville, AL 35801.

Registration Form

Family Name _____

Email _____ Phone number _____

Names & Ages of ALL family members attending: _____

** OPTIONAL PURCHASE #1 - \$15 each *Parish Weekend T-shirt*

T-shirt Size (please place total # needed in blank beside size)

Youth ____S ____M ____L

Adult ____S ____M ____L ____XL ____XXL

**OPTIONAL PURCHASE #2 - \$4 each

Environmentally Friendly BPA-free water bottle with Parish Weekend Logo # of water bottles requested _____

*Sunday brunch # of people _____ (this is included in your meal price we need a headcount for camp)

Cost of Weekend

Lodging: \$170 x _____ rooms =

\$ _____

Meals (*children 6 and under eat free*) # people _____ x \$35 =

\$ _____

Mandatory Activity Fee =

\$ 20.00

(*optional purchases*)

** T-shirts \$15 x _____ ordered =

\$ _____

** Water Bottles \$4 x _____ ordered =

\$ _____

FAMILY TOTAL

\$ _____

ALTAR FLOWERS 2011 DEDICATION FORM

If you are interested in dedicating **Altar flowers for a specific Sunday in 2011**, please complete and mail this form with your check made out to "Flower Guild" and mail to: Andrea Vandervoort, 434 Locust Ave. Huntsville, AL 35801. If you have questions, you may call Andrea at 539-2673.

PLEASE PRINT ALL INFORMATION, THANK YOU.

2011 Altar Flower Order Form

The following dates are available: 3/27, 4/ 3, 5/29, 6/ 26, 7/24, 8/7, 9/4, 10/16, 10/30, 11/13, 11/20

Altar Flowers are \$40 or \$20 for shared dedications

Date desired _____

Your Name _____

Phone # _____

Would you share a dedication? _____

Do you wish to have your name listed in the bulletin? _____

Please be specific by underlining or circling above your desired dedication below:

All dedications read "To the glory of God and..."

in loving memory of or in thanksgiving for or in celebration of...

Name for this altar flower dedication: _____

PRAYER LIST

We pray for those who are ill or recovering:

Terry Hodge, Fr. Jack Wilson, Charlotte Laxson, Jeri Newman, Bette Moon, Wesley Lavender, Gail Rogers, Sue Campbell, Anne Robinson, Charles Abney, Sarah Taite Kelly, Joy Gass, Charlie Vowell, Leslie Kastens, Luann McCarty, Elizabeth Weaver, Angel Colin, Donald Perry, Sara Welch, Emile Joffrion, Jeanne Dowd, Elsie Olsen, Perry McClain, Eileen Sullivan, Leigh Wahl, Bill Marsh, John, Nancy Kelly, Julie Kirk, Joan Bennett.

We pray for our Military:

Lourie Formby, Afghanistan; John Orosz, Afghanistan

To add a name to the Prayer List, please contact Connie Gadomski in the church office, 256-533-2455. Due to privacy issues, the person must give permission to have their name on the Prayer List.

We pray for the departed:

Jane Pradat, wife of retired priest Ray Pradat
Kelly Berger, brother of Russell Berger
Faye Ryan, aunt of Freya Neely

We give thanks for the birthdays of our children:

2/18 Franklin Aldag, Crawford Watson
2/19 Laura Sharp
2/20 Julie DiFranco, John Hutchens
2/22 Matthew Church
2/23 Betsy Bryant, Dylan Joffrion, Olivia O'Halloran, Foster Shrout, Connor Burley, Susan Purvis,
2/24 Jordan Copeland, Sabol Rodgers
2/26 Caroline Wilson
3/1 Grant Howell, Thomas Shrout, Bailey Morrison
3/2 Jordan Cozby, Justin Foscue
3/3 Logan Lanier
3/4 Isabelle Towry, Clay Walker

ACOLYTE SCHEDULE March 2011

March 6

8:45	11:00
C Andrew Dunn, I Braudaway	C R Quillen
T KN Hall, K Correale	T J Cozby, S Watson
T Meredith Walker, F Aldag	T A Young, P Stockton
S Travis King	S Patrick Quillen
AS Maria Caprio	AS Shep O'Neal

March 9 , 6:00 p.m.— Ash Wednesday

C Elizabeth Moody
T Jackson Anglin
T Allie Starnes
S Hanly Ward
AS Spencer Anglin

March 13

8:45	11:00
C M Sharp, H Chilton	C Will Ellison
T Gillian Starnes, Anna Chilton	T Allison Taylor, SL Miller
T John Chilton, Steuart Evans	T John Laney, Emily Ellison
S Laurel Sharp	S Julie DiFranco
AS Rosie Chilton	AS MM Ragland

March 13 , 5:00 p.m.— Choral Evensong

C Rachel Quillen
T Karl Schneider, Neil Luther
Thurifer: Kachi Eziebe

March 20

8:45	11:00
	Senior Acolyte Cross Presentation
C Sabol Rogers, Tripp Ford	C Drew McDonald, Kachi Eziebe*
T Windham Hunter, C Bates	T Dylan Joffrion, Foster Shrout
T Chase Rogers, Palmer Ford	T Walker Purvis, Hutson Chilton
S Harrison Hunter	S Ian Briggs
AS Carter McDonald	AS Rachel Joffrion

March 27

8:45	11:00
C Cat Kelly, Noelle Carter	C Bird Sherrill, Paul Naumann
T HB Bryant, Neil Luther	T Celeste Nelson, Foard Naumann
T SG Moore,	T Jordan Cozby, Walker Purvis
S Tindall Morring	S Elizabeth Moody
AS Karsten Correale	AS Trace Markwalter

Eucharist Instruction offered to 1st graders and parents!

Please join the children's formation team beginning this **Sunday, February 20 in Theology Theater** during the Sunday school hour. We will start a four week series for our first grade students and their parents exploring the mystery of the Holy Eucharist. This class is always very entertaining and informative! Please email madeline.mullins@gmail.com if you plan to attend this class with your child.

Note: If you have a child who did not get to attend this class in 1st grade, they are welcome to attend with a parent. Please remember to email Madeline so that we will have enough supplies available on the first day!



PARISH WEEKEND 2011
REGISTRATION DEADLINE MONDAY
DON'T DELAY

WORSHIP SCHEDULE
Sunday Holy Eucharist
7:45 a.m. Rite 1 in Bibb Chapel
8:45 a.m. Rite II , 11:00 a.m. Rite II
Sunday on Thursday
6:00 p.m. in Bibb Chapel

Something NEW this LENT on TUESDAYS!!!

The "Tuesday Preaching Series" has turned into "THE HEART OF LENT".
THREE Tuesdays (March 22, 29, and April 5) with a Noon Talk in the Chapel
followed by a box lunch in Ridley Hall; with question time for the Speaker,
The Rev. King Oehmig of Chattanooga
King was our Palm Sunday Preacher last year and returns with new stories, wisdom and
graceful humor.
Plan now to come and bring a friend!

NIGHTS AT NATIVITY LENTEN SERIES WEDNESDAYS 2011

The Rev. Geoffrey Hoare ____ March 16th

The Rev. Geoffrey Hoare is rector of All Saints' Episcopal Church in Atlanta, GA. A native of England, he came to America as a Morehead Scholar at the University of North Carolina in 1976. After taking an additional degree from Cambridge University, where he is a member of Magdalene College, he returned to the USA and to the Yale Divinity School together with its Episcopal component, the Berkeley Divinity School. Geoffrey has served church and community in a number of capacities ____ the Board of Berkeley Divinity School at Yale and he currently serves as an instructor in the contextual education program of the Candler School of Theology at Emory University.

The Rev. Betsy Jennings Powell ____ March 23rd

The Rev. Betsy Powell has served as Associate Rector of St. Paul's Episcopal Church in Selma since January 2010, where she and her husband have the good fortune to serve as clergy on the same staff. Prior to coming to St. Paul's, Betsy served as curate at St. Simon's on the Sound Episcopal Church, Ft. Walton Beach, FL and rector of St. Augustine of Canterbury Episcopal Church, Navarre, FL. She received an M.D. degree in 1976 from Vanderbilt University School of Medicine, completing her pediatrics residency and fellowship training over the next five years. She practiced pediatrics for twenty years prior to attending seminary at The General Theological Seminary in NYC. In addition to her parish and community involvement, she has participated in several mission trips to Central America over the years.

The Rev. Ben King ____ March 30th

The Rev. Dr. Benjamin King became Assistant Professor of Church History at the School of Theology, Sewanee in the fall of 2009 and Director of the School's Advanced Degrees Program in the fall of 2010. Born in Brighton, on the south coast of England, in 1974, Ben went to Cambridge University to study history and then to seminary there to study theology. He was raised in the Church of England. While serving as an assistant in a parish in Boston, Mass., he attained a Master's in Theology at Harvard Divinity School. From the fall of 2005, Ben was Episcopal Chaplain at Harvard University, where he also taught at Harvard Divinity School. His first book, *Newman and the Alexandrian Fathers*, just won a 2011 Templeton Award for Theological Promise.

The Rev. Margaret Marshall ____ April 6th

The Rev. Margaret Marshall is an Episcopal priest from Chattanooga and a graduate of the University of the South. She has served in parish ministry and was the founder and executive director of The Sanctuary in Chattanooga, TN. She is the Chattanooga coordinator for Contemplative Outreach and leads Centering Prayer workshops, retreats, and weekly groups. She is a regular presenter of retreats at St. Mary's Sewanee. Margaret provides pastoral marriage preparation for couples and spiritual direction for individuals. She is a Master Gardener and passionate about her family, garden, cooking, photography, travel and silence!

The Rev. Paul C. Elliott ____ April 13th

The Rev. Paul Elliott was baptized and confirmed at Nativity. He earned a Master of Divinity degree at The General Theological Seminary in New York City. He was sponsored by All Saints' Episcopal Church in Atlanta and was ordained priest in 1996. His first assignment was as Associate Rector and chaplain to the school St. Martin in the Fields Episcopal Church located in northeast Atlanta. While at St. Martin's, he began studies at the Candler School of Theology at Emory University, working toward a doctorate in pastoral counseling. In 2003 he became a full-time counselor at the Care and Counseling Center of Georgia. In 2007 Father Elliott was called to be the Rector of St. Andrew's in the Pine Episcopal Church in Peachtree City, GA.

WORSHIP SCHEDULE March 2011 published 2/15/11

WEDNESDAY, March 2, HE

Service	Celebrant	Preacher	LEM
---------	-----------	----------	-----

12:00 PM	Anderson	Anderson	Cheryl Watts
----------	----------	----------	--------------

THURSDAY, March 3, HE

Service	Celebrant	Preacher	
---------	-----------	----------	--

6:00 PM	Anderson	Anderson	
---------	----------	----------	--

SUNDAY, March 6, Last Sunday after the Epiphany

Service	Celebrant	Preacher	LEM (Landry out) Baptism at 8:45	Lector	Intercessor
---------	-----------	----------	----------------------------------	--------	-------------

7:45 AM	Anderson	Anderson	Lea Ann Barnett	Le Ann Barnett	Lea Ann Barnett
---------	----------	----------	-----------------	----------------	-----------------

8:45 AM	Akin	Anderson	Basye Holland-Shuey, Ralph Shuey, Warren Vann	Jeannie Robison	Shirley Hale
---------	------	----------	---	-----------------	--------------

11:00 AM	Akin	Anderson	Dianna Dabbs, Roy Gowman, Barbara Buice	Mary Johnson, Sally Ann Culver	Adalene Bledsoe
----------	------	----------	---	--------------------------------	-----------------

WEDNESDAY, March 9, HE Ash Wednesday

Service	Celebrant	Preacher	LEM
---------	-----------	----------	-----

7:00 AM	Akin	Akin	Sue Johnson
---------	------	------	-------------

12:00 PM	Anderson	Akin	Merrilee Allen, Don Askins
----------	----------	------	----------------------------

6:00 PM	Anderson	Akin	Lea Ellison, Peter Cobun, Bob Serio
---------	----------	------	-------------------------------------

THURSDAY, March 10, HE

Service	Celebrant	Preacher	
---------	-----------	----------	--

6:00 PM	Landry	Landry	
---------	--------	--------	--

SUNDAY, March 13, First Sunday in Lent

Service	Celebrant	Preacher	LEM	Lector	Intercessor
---------	-----------	----------	-----	--------	-------------

7:45 AM	Landry	Landry	John Hendricks	John Hendricks	John Hendricks
---------	--------	--------	----------------	----------------	----------------

8:45 AM	Anderson	Landry	Bob Serio, Pat Sampson	Lee Hicklen, Dianne Nettles	Clay Sherrill
---------	----------	--------	------------------------	-----------------------------	---------------

11:00 AM	Anderson	Landry	Robin Cozby, Bryan Bennett	Martha Joffrion, John Conover	Sally Ann Culver
----------	----------	--------	----------------------------	-------------------------------	------------------

WEDNESDAY, March 16, HE

Service	Celebrant	Preacher	LEM
---------	-----------	----------	-----

12:00 PM	Anderson	Anderson	Marilyn Lands
----------	----------	----------	---------------

THURSDAY, March 17, HE

Service	Celebrant	Preacher	
---------	-----------	----------	--

6:00 PM	Landry	Landry	
---------	--------	--------	--

SUNDAY, March 20, Second Sunday in Lent

Service	Celebrant	Preacher	LEM (Akin & Landry out)	Lector	Intercessor
---------	-----------	----------	-------------------------	--------	-------------

7:45 AM	Anderson	Anderson	Ken Barnett	Ken Barnett	Ken Barnett
---------	----------	----------	-------------	-------------	-------------

8:45 AM	McCown	Anderson	Cheryl Watts, Charlie Warren, Lewie Bates	Melissa Kirkindall, Amy Creech	Virginia Kobler
---------	--------	----------	---	--------------------------------	-----------------

11:00 AM	TBD	Anderson	Lea Ellison, Merrilee Allen, Ed Vaughn	Debbie Collette, David Collette	Rich Goodwin
----------	-----	----------	--	---------------------------------	--------------

WEDNESDAY, March 23, HE

Service	Celebrant	Preacher	LEM
---------	-----------	----------	-----

12:00 PM	Landry	Landry	Mary Hendricks
----------	--------	--------	----------------

THURSDAY, March 24, HE

Service	Celebrant	Preacher	
---------	-----------	----------	--

6:00 PM	Anderson	Anderson	
---------	----------	----------	--

SUNDAY, March 27, Third Sunday in Lent Parish Retreat

Service	Celebrant	Preacher	LEM (Anderson & Landry out)	Lector	Intercessor
---------	-----------	----------	-----------------------------	--------	-------------

7:45 AM	McCown	McCown	Sue Johnson	Sue Johnson	Sue Johnson
---------	--------	--------	-------------	-------------	-------------

8:45 AM	Akin	McCown	Lee Hicklen, Pearline Gilpin, Robert Dunn	Kachi Ezeibe, Buddy Moon	Lee Hicklen
---------	------	--------	---	--------------------------	-------------

11:00 AM	Akin	McCown	Walter Thames, Janet Robbins, Don Askins	Ed Green, Mickey Ellis	Susan Brown
----------	------	--------	--	------------------------	-------------

WEDNESDAY, March 30, HE

Service	Celebrant	Preacher	LEM
---------	-----------	----------	-----

12:00 PM	Akin	Akin	Cheryl Watts
----------	------	------	--------------

THURSDAY, March 31, HE

Service	Celebrant	Preacher	
---------	-----------	----------	--

6:00 PM	Akin	Akin	
---------	------	------	--

USHERS

8:45	Josh Kelly, Melissa Helton, Gripp Luther, Jeff Ellis, Tom Ford, Grant Thomson, Bill Joyner
------	--

ALTAR GUILD

5	Sara Little, Judy Heacock, Nancy Colin, Mary Johnson, Laura Innes, Marcia Machek	12	Debbie Joyner, Laurie Noojin, Barbara Ward, Louise Reynolds, Rose Ann Shearer
---	--	----	---

19	Elaine Calhoun, Emily Moody, Beth Pugh, Jeannie Robison, Linda Watts	26	Wanda Cobb, Suzy Naumann, Caffey Litkenhous, Kathryn Mahoney, Alice Lanier
----	--	----	--

BLUE APRON

6	8:45 – McC Lung & Bryant	11:00 – Smitherman	13	8:45 – Elliott & Caprio	11:00 - Pinson
---	--------------------------	--------------------	----	-------------------------	----------------

20	8:45 – Moring & Ellison	11:00 – Briggs	27	8:45 – Kelly & Windham	11:00 - Watts
----	-------------------------	----------------	----	------------------------	---------------

STEEPLE SCHEDULE

The Steeple is published each
1st and 3rd Wednesdays.

To submit events or articles,
you may bring them to Linda
Wheeler in the church office or
email:

linda.wheeler@nativity-hsv.org

The deadline for the next issue is
Monday noon, February 28.

CLERGY & STAFF

The Rev'd Dr. Andy Anderson
Rector

The Rev'd Mary Anne Akin
Associate

The Rev'd Brad Landry
Associate

The Rev'd Mary E. Groff
Deacon

Suzanne Purtee
Organist/Choirmaster

Lane Tutt
Adult Christian Formation

Minda Alexander

Bartlee Linton

Interim Youth Christian Formation

Madeline Mullins

Children's Formation

Elizabeth Foster

Children's Formation

Audrey Clayton

Nursery Coordinator

John Buyse

Property Manager

Al Ford

Sexton

Sally Stockton

Kitchen Coordinator

Beverly Franklin

Bookkeeper/Business Mgr

Connie Gadomski

Worship & Ministry Assistant

Linda Wheeler

Assistant to the Rector

Communication/Publication Admin

Prentice White

Verger/Wedding Coordinator

Vestry

Bland Warren

Senior Warden

Pat Goodson

Junior Warden

Russ Alexander

Treasurer

Donna Joffrion

Clerk

AFTER HOURS EMERGENCY

A member of the clergy is
on call each week.

If you need assistance from a priest
outside office hours, the priest on
call will respond to your page.

The number to call *In Case of an
Emergency Only* is 256-533-7007.
All other calls should be directed to
church phone 256-533-2455
and follow the prompts to leave a
message for a priest to respond.

Church of the Nativity, Episcopal

208 Eustis Ave. SE
Huntsville, AL 35801
256-533-2455
Fax: 256-533-2374
www.nativity-hsv.org



Give up The Steeple for Lent

We are not suggesting that you stay in the dark about the events happening at Nativity but are asking you to give up the printed copy of *The Steeple*. *The Steeple* will be e-mailed to you and is available on the website nativity-hsv.org) in full color. If you do not have access to electronic communication you can continue to receive your *Steeple* in the mail but you will need to fill out the form below and mail back to the church office. We will discontinue routine mailing of *The Steeple* after Ash Wednesday, March 9. So **Give up The Steeple for Lent**, help us cut costs and do your part for the environment.

Please complete this form and mail to:
Church of the Nativity; Attention: Communications
208 Eustis Ave; Huntsville, AL 35801

YES, please continue to send *The Steeple* via postal service:

YOUR NAME _____

STREET ADDRESS _____

CITY, STATE, ZIP _____