

# Why does this Kiosk have a Tower?



The tower (chimney) provides a nesting and roosting site for the bird known as the Chimney Swift.



**Airborne**

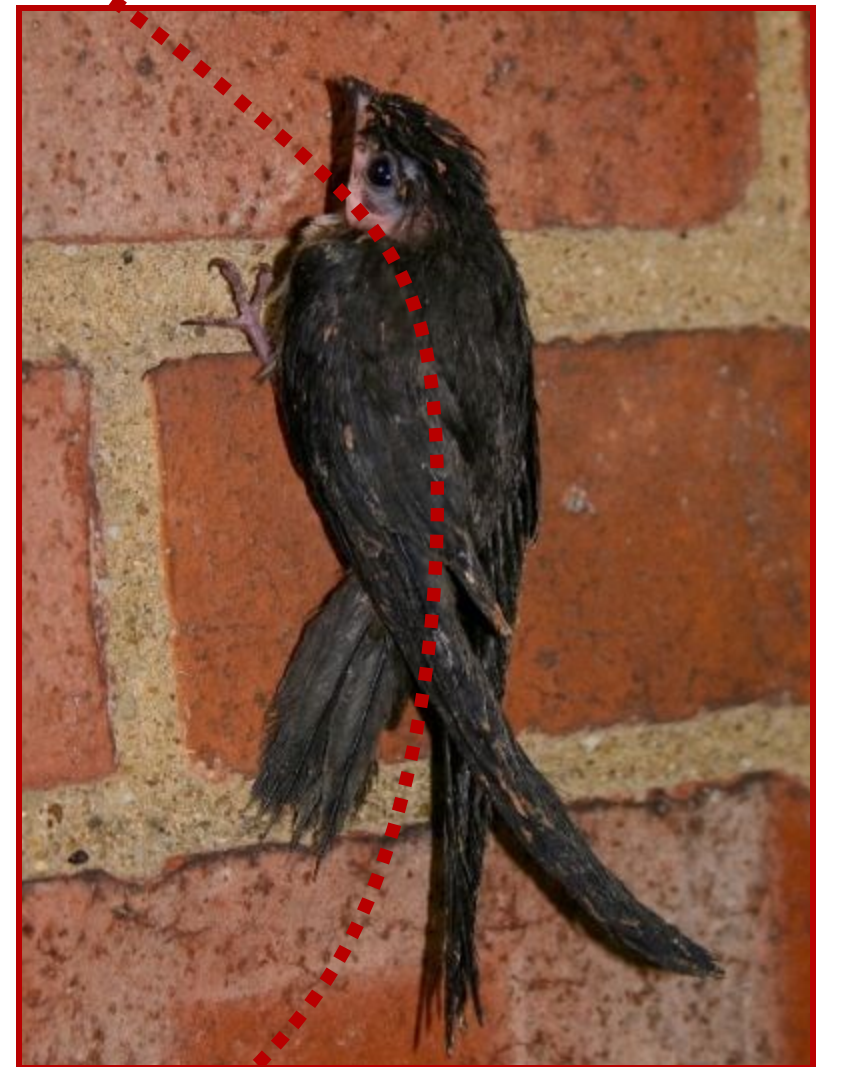
## How to Share your Chimney safely with Chimney Swifts

- Clean chimney every first of March.

- Close damper so that nests or young do not fall into fireplace area.

- The glue-like saliva used by the adult swifts to build the nest is somewhat fire-retardant.

At 4 weeks the young swifts will fly lightly back & forth within the chimney building their flight muscles.  
And  
Then...



At 2 weeks of age the young swifts will climb out of the nest and cling to the walls.

Both parents incubate the eggs for 19 days.



Only one 3" nest is built in each chimney. Up to 5 eggs are laid.

## Why should you share your chimney with Chimney Swifts?

- Swifts are only here during the warm months when chimneys are not used.
- A pair of Chimney Swifts consume about 1/4 lb of flying insects a day.