

OKLAHOMA CITY STREETScape

THE OFFICE OF JAMES BURNETT
AUGUST 26, 2009



01



"CREATE A COHESIVE CENTRAL BUSINESS DISTRICT." 21ST CENTURY CITY, MEMORABLE.

02



A STREETScape THAT IS UNIQUE TO "OKLAHOMA CITY" LOCAL CONTEXT.

03



"CREATE A NEW URBAN FABRIC," THAT ALLOWS FOR FUTURE FLEXIBILITY, GROWTH.

04



"CREATE AN ACCESSIBLE ENVIRONMENT." AUTOMOBILE, PEDESTRIAN, BICYCLE, ABILITIES.

05



"DEVELOP A NEW SUSTAINABLE SYSTEM." LEED PRINCIPLES, WATER, LOCAL MATERIALS, SHADE, COMFORT DEFINITION

OKLAHOMA CITY STREETScape AND STREET IMPROVEMENTS SUMMARY

EXECUTIVE SUMMARY

PROJECT TIMELINE COMPLETED

STREETScape MASTER PLAN

1.	Oklahoma City Streetscape Improvements Plan, Final Plan	November 18, 2008
2.	Review Meeting with Oklahoma City, City Managers Office, Public Works, Devon Management Team, OJB	January 22, 2009
3.	Issue Proposal for Landscape Architectural Consultant Services, Revision #1	January 30, 2009
4.	Meeting with Public Works, Project Kick-Off Meeting	February 10, 2009
5.	Oklahoma City Public Works Department, ADA Contractor Certification Course (3 team members certified)	February 11, 2009
6.	Photo documentation of proposed Downtown Street Improvements Alignments	February 12, 2009
7.	Meeting with Traffic Engineering Consultants to review Oklahoma City Streetscape Improvements Plan	February 12, 2009
8.	Recommendations Report to OKC Engineering, Traffic Engineering Consultants	February 17, 2009
9.	Visit local Civil Firms, Issue Land Surveying Services for the OKC Streetscape and Street Improvements Project	March 31, 2009
10.	Attend City Council Meeting for Walkability Study	March 31, 2009
11.	Award local Land Survey/Civil Contract	April 6, 2009
12.	Include additional scope around the Oklahoma City National Memorial and Museum Site	April 23, 2009
13.	Sign Proposal for Landscape Architectural Consultant Services, Revision #10	May 1, 2009

SCHEMATIC DESIGN

14.	Project Kick-off, Meeting with OKC Public Works	July 1, 2009
15.	Civil/Survey Kick-off Meeting with OKC Public Works, Lemke Land Survey	July 1, 2009
16.	Steering Committee Meeting #1 (Key points, Project Goals, Project Boundary, Traffic Analysis, Site Issues & Opportunities, Key Considerations)	July 14, 2009
17.	Engaged Jeff Speck & Associates	July 24, 2009
18.	Steering Committee Meeting #2 (Key points, Context, Project Priorities, Traffic Study, Overlay Diagrams - CBD, Traffic- Transportation- Bike Routes- Pedestrian Routes, Initial Plans & Ideas)	July 28, 2009
19.	Engaged Glatting Jackson	August 8, 2009
20.	Steering Committee Meeting #3 (Key points, Project Goals, Schedule, Traffic Proposal Option I, Option II, Plan/Diagrams/Sections/Partial Plans)	August 11, 2009
21.	Issued Updated Traffic Plan/Diagram/Sections/Partial Plans	August 18, 2009

SCHEMATIC DESIGN - IN PROGRESS - NEXT STEPS (WEEK 9 OF 15)

CURRENT KEY TASKS

1. Survey, Phase I, completed (15 Total Street Alignments).
2. Survey, Phase II, Complete (McGee, Walker, Park, Main) Partial (Hudson, Robinson, Broadway, Reno).
3. Traffic Study, 85% complete.
4. Traffic Study Letter of Planning Validation, (Glatting Jackson) August 25, 2009.
5. Traffic Study Review, Traffic Engineering Consultants, underway.
6. OKC Streetscape Plan Development, In progress 65% complete.
7. Design Options/Studies, to be presented in Steering Committee Meeting #4 (August 26, 2009).

ADDITIONAL CONSIDERATIONS

NEXT STEPS

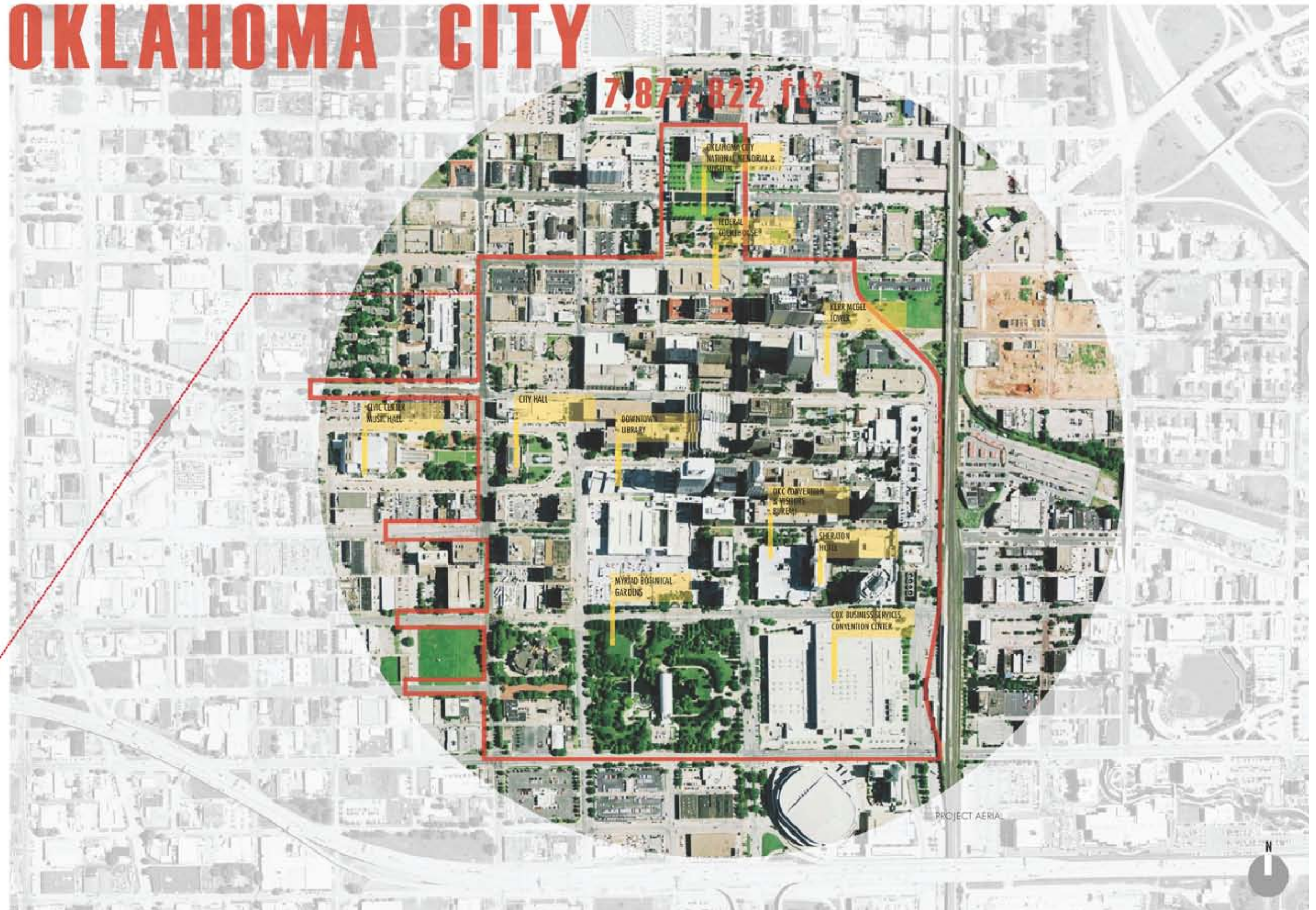
1. Meet with Traffic Sub-Committee (Laura Story, Mike Clark, Stuart Chi, Russell Claus, Randy Entz, Todd Butler, Design Team).
2. Meet with Maintenance Sub-Committee (Laura Story, Mike Clark, Larry Ogla, Terry Ash, Russell Claus, Aubrey Hammontree, Design Team).
3. Overlay OKC Transportation Plan with Proposed Streetscape Diagram.
4. Overlay OKC Bike Plan with Proposed Streetscape Diagram.
5. Present Streetscape Plan to the Design Review Committee.
6. Present Streetscape Plan to Oklahoma City Community.

DESIGN TEAM

The Office of James Burnett
Murase Associates
Speck & Associates LLC
Glatting Jackson Kercher Anglin, Inc. (OJB in-house consultant)

OKLAHOMA CITY

7,877,822 ft²



PROJECT DATA

AREA OF SITE
7,877,820 SQUARE FEET, 180 ACRES +/-

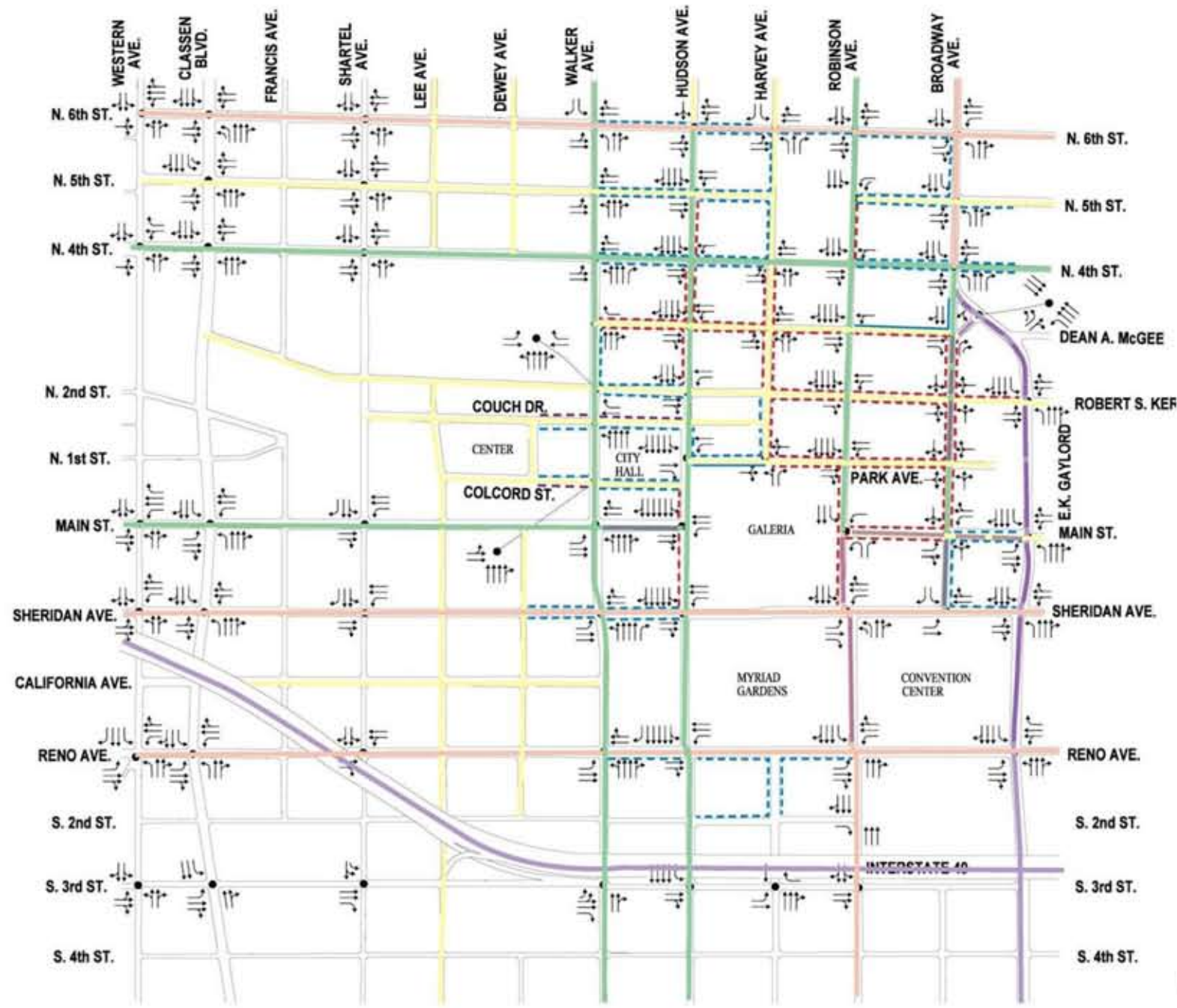
HUMAN POPULATION
CITY 547,274
METRO 1,262,127

CITY BLOCKS
36 BLOCKS

BLOCK FACES 77
35 EAST WEST
42 NORTH SOUTH

INTERSECTIONS
48 INTERSECTIONS

EXISTING TRAFFIC CIRCULATION



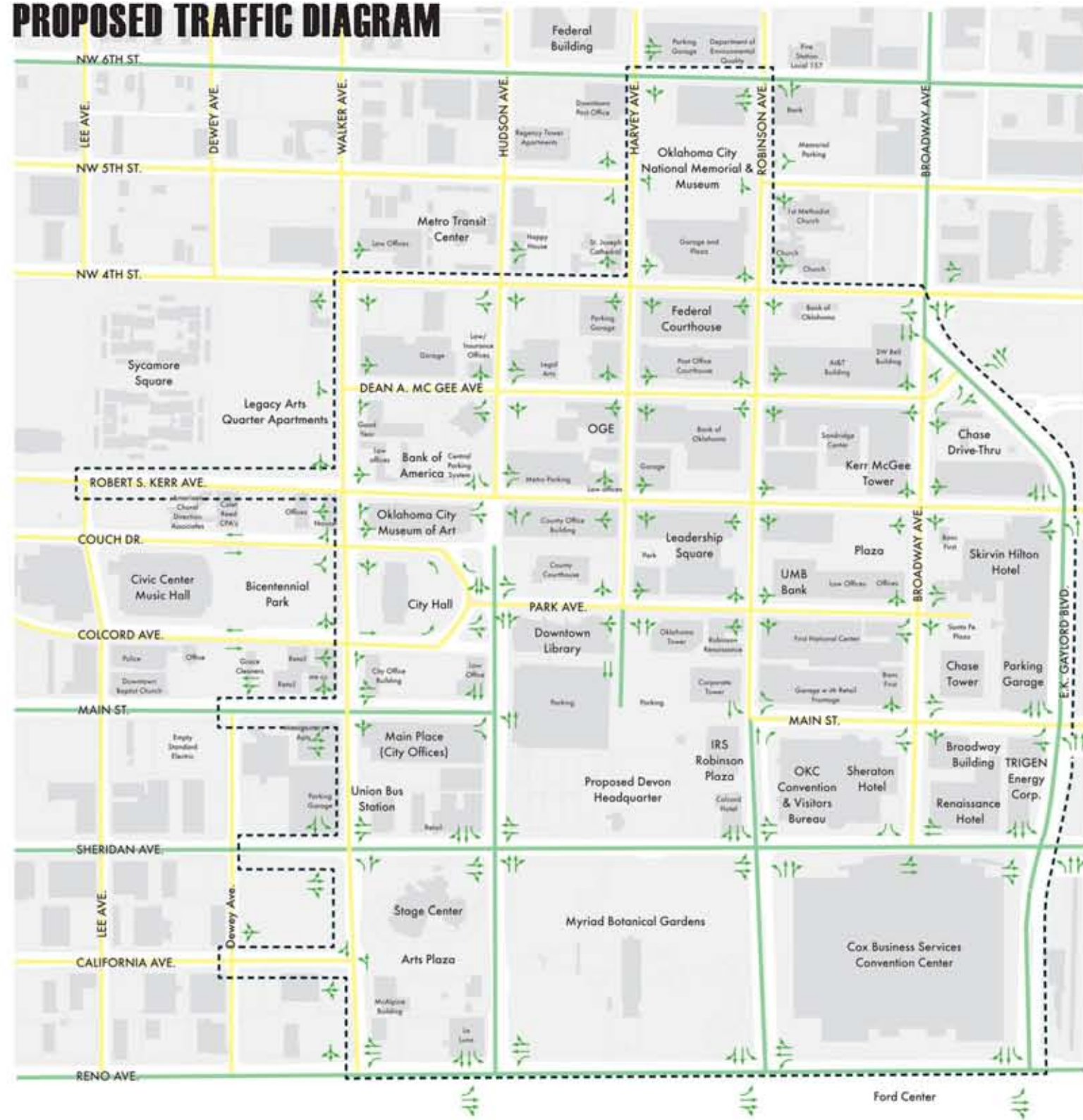
SUMMARY

- FOUR ONE-WAY STREET (WALKER, HUDSON, HARVEY, AND ROBINSON AVENUES)
- DEDICATED LEFT/RIGHT TURN LANES AT INTERIOR DOWNTOWN STREETS

LEGEND

	6 THROUGH LANES (WITH ADDITIONAL TURNING LANES)
	4 THROUGH LANES (WITH ADDITIONAL TURNING LANES)
	4 THROUGH LANES
	2 THROUGH LANES
	PLANTED MEDIUM
	TRAFFIC LANE
	ON-STREET PARALLEL PARKING (DEDICATED LANE)
	ON-STREET PARALLEL PARKING (FLEXIBLE LANE DURING OFF-PEAK HOURS ONLY)
	ON-STREET ANGLED PARKING (DEDICATED LANE)

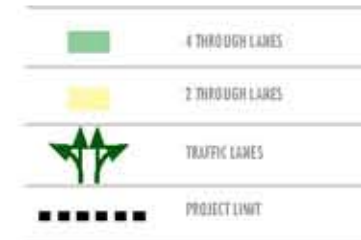
PROPOSED TRAFFIC DIAGRAM



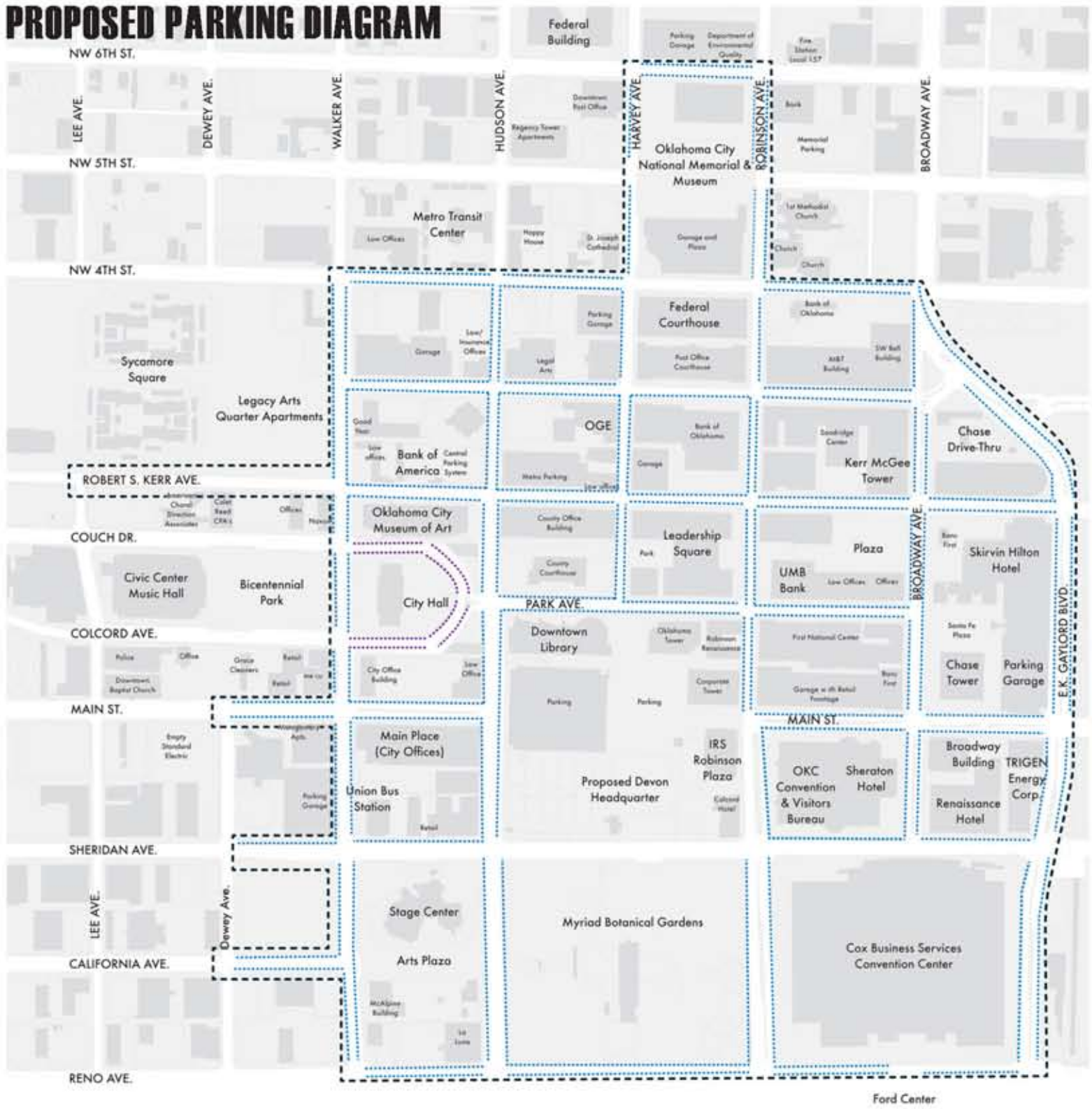
GENERAL RECOMMENDATION

- PROVIDE TWO-WAY TRAFFIC ON ALL STREETS IN THE CENTRAL BUSINESS DISTRICT EXCEPT FOR THE ONE BLOCK
- SECTION OF CONCORD AND COUCH AVENUES NEAR CITY HALL
- PROVIDE 10 FOOT WIDE VEHICULAR LANES, 11-12' FOR LANES ON TRANSIT ROUTES
- PROVIDE AUTOMATIC "WALK" SIGNAL FOR PEDESTRIAN
- MAXIMIZE ON-STREET PARKING SPACES THROUGHOUT THE DISTRICT WITH PARALLEL AND ANGLED PARKING (REFER TO PARKING DIAGRAM)
- INTRODUCE BIKE LANES BETWEEN ON-STREET PARKING SPACES AND VEHICULAR TRAFFIC LANES WHEN
- STREET WIDTH ALLOWS (REFER TO BIKE ROUTE DIAGRAM)

LEGEND



PROPOSED PARKING DIAGRAM



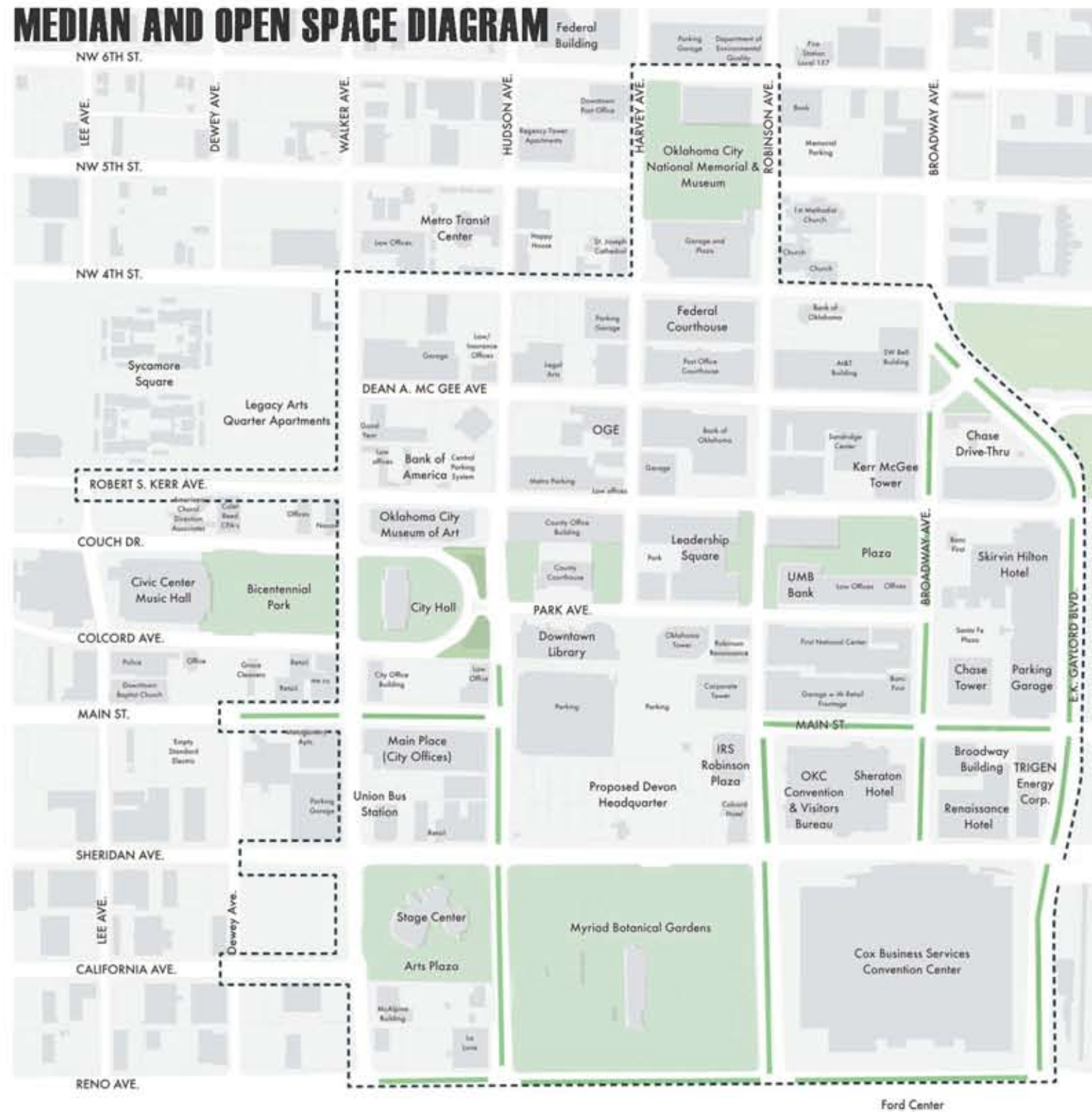
GENERAL RECOMMENDATION

- MAXIMIZE ON-STREET PARKING SPACES THROUGHOUT THE DISTRICT WITH PARALLEL PARKING AND ANGLED PARKING
- PARALLEL PARKING DIMENSION - 8' WIDE BY 22' LONG

LEGEND

- ON-STREET PARALLEL PARKING (DEDICATED LANE)
- - - ON-STREET PARALLEL PARKING (FLEXIBLE LANE DURING OFF-PEAK HOURS ONLY)
- PROJECT LIMIT

MEDIAN AND OPEN SPACE DIAGRAM



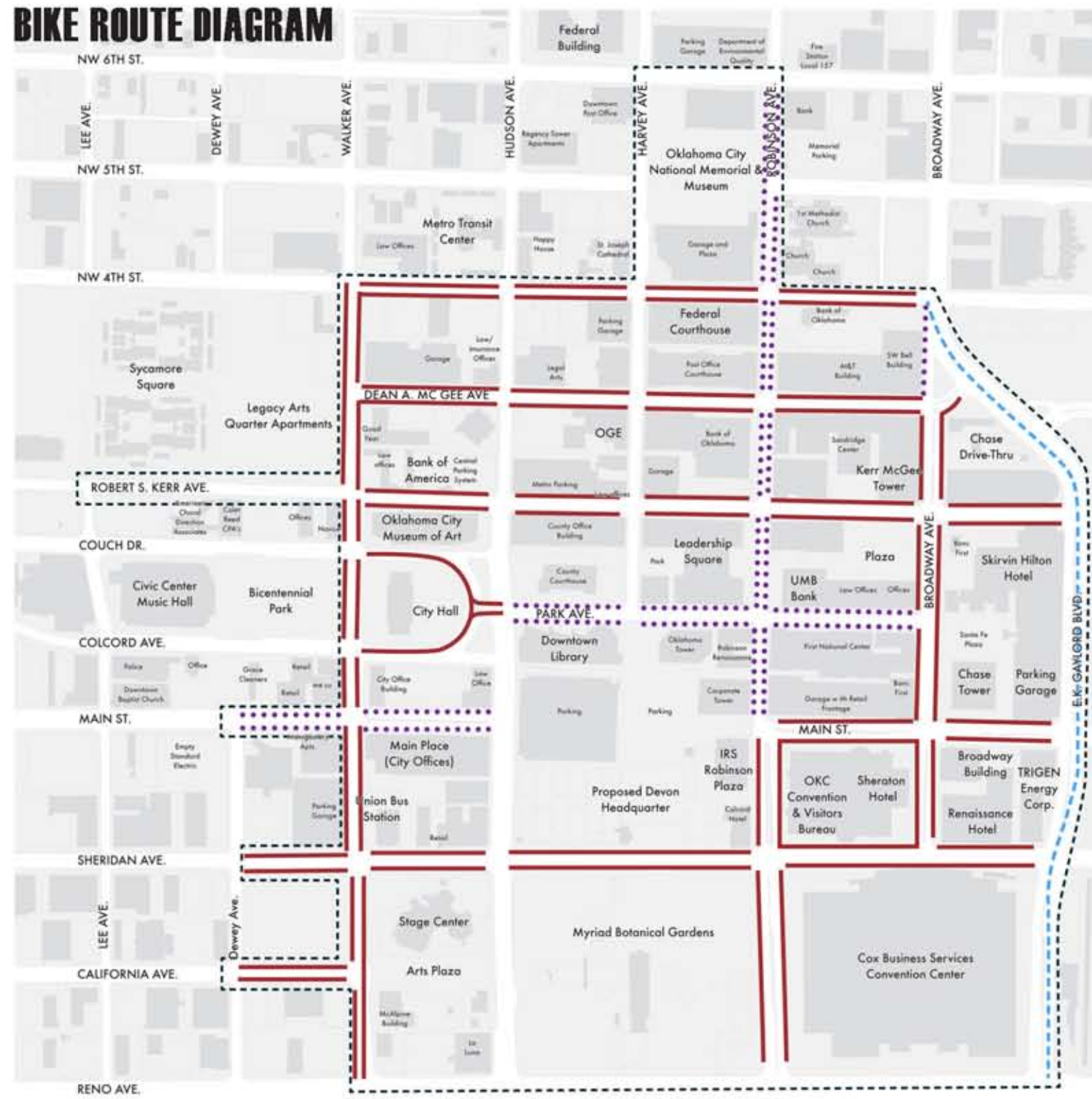
GENERAL RECOMMENDATION

- CONVERT STRIPEHD MEDIAN ON RENO AVE AND E.K. GAYLORD TO PLANTED MEDIAN

LEGEND



BIKE ROUTE DIAGRAM



SHARROW LANE MARKING

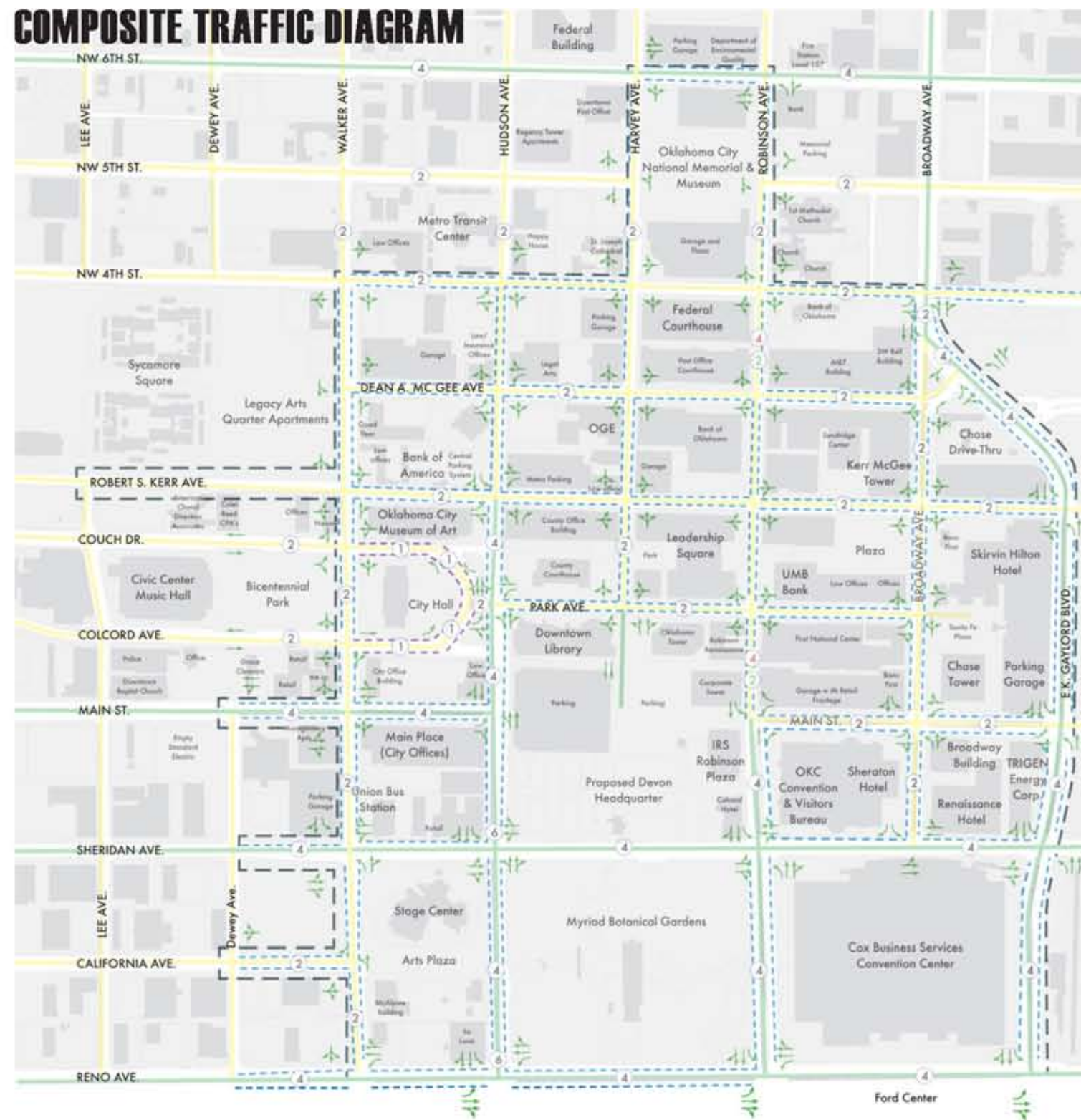
GENERAL RECOMMENDATION

- PROVIDE A COMPREHENSIVE BIKE ROUTE SO THAT MAJOR DESTINATIONS ARE WITHIN 5 MINUTEWALK FROM BIKE ROUTES
- 5' WIDE DEDICATED BIKE LANES ON MAJOR STREETS
- DEDICATED BIKE PATHS ALONG EK. GAYLORD BETWEEN RENO AVE AND DEAN A. MCGEE AVE.
- PROVIDE SHARROW MARKING ON TRAFFIC LANES TO INDICATE ROAD SHARING BETWEEN VEHICLES AND BIKES

LEGEND

- SHARROW LANE (MARKED SHARED LANE FOR VEHICLES AND BIKES)
- BIKE LANE (DEDICATED 5 FOOT BIKE LANE ON STREET)
- BIKE PATH (DEDICATED OFF-STREET PATH)
- PROJECT LIMIT

COMPOSITE TRAFFIC DIAGRAM



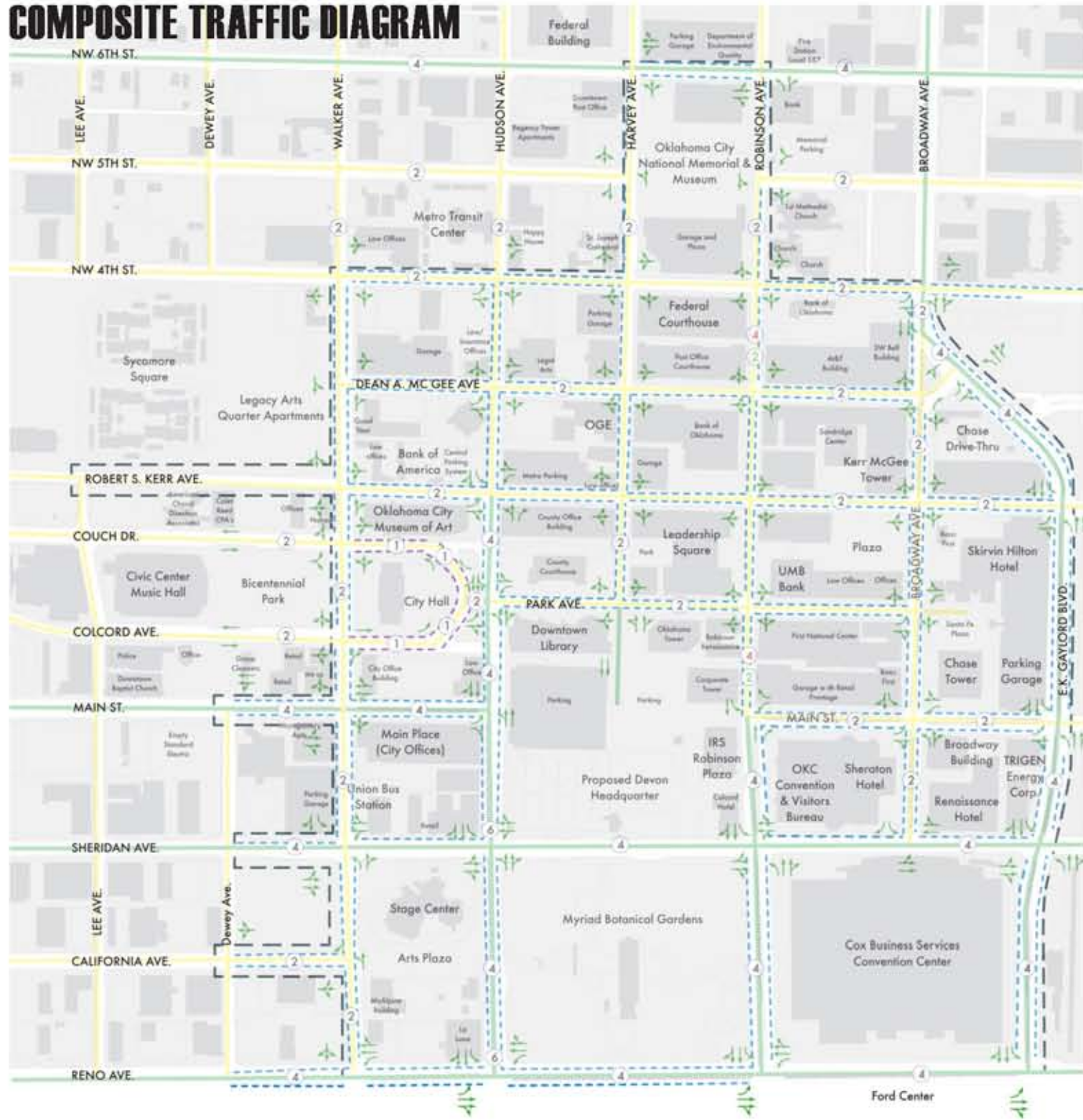
GENERAL RECOMMENDATION

- PROVIDE TWO-WAY TRAFFIC ON ALL STREETS IN THE CENTRAL BUSINESS DISTRICT EXCEPT FOR SOME SECTIONS OF COLCORD AVE AND COUCH AVE NEAR CITY HALL
- REDUCE LANEWIDTH TO 10 FEET; 11-12 FEET FOR TRANSIT ROUTES
- PROVIDE AUTOMATIC "WALK" SIGNAL FOR PEDESTRIAN
- MAXIMIZE ON-STREET PARKING SPACES THROUGHOUT THE DISTRICT WITH PARALLEL AND ANGLED PARKING
- INTRODUCE BIKE LANES BETWEEN ON-STREET PARKING SPACES AND VEHICULAR TRAFFIC LANES ON CERTAIN STREETS
- CONVERT STRIPED MEDIAN ON RENO AVE TO PLANTED MEDIAN

LEGEND

	4 THROUGH LANES
	2 THROUGH LANES
	TRAFFIC LANE
	PLANTED MEDIAN
	PROJECT LIMIT






COMPOSITE TRAFFIC DIAGRAM



GENERAL RECOMMENDATION

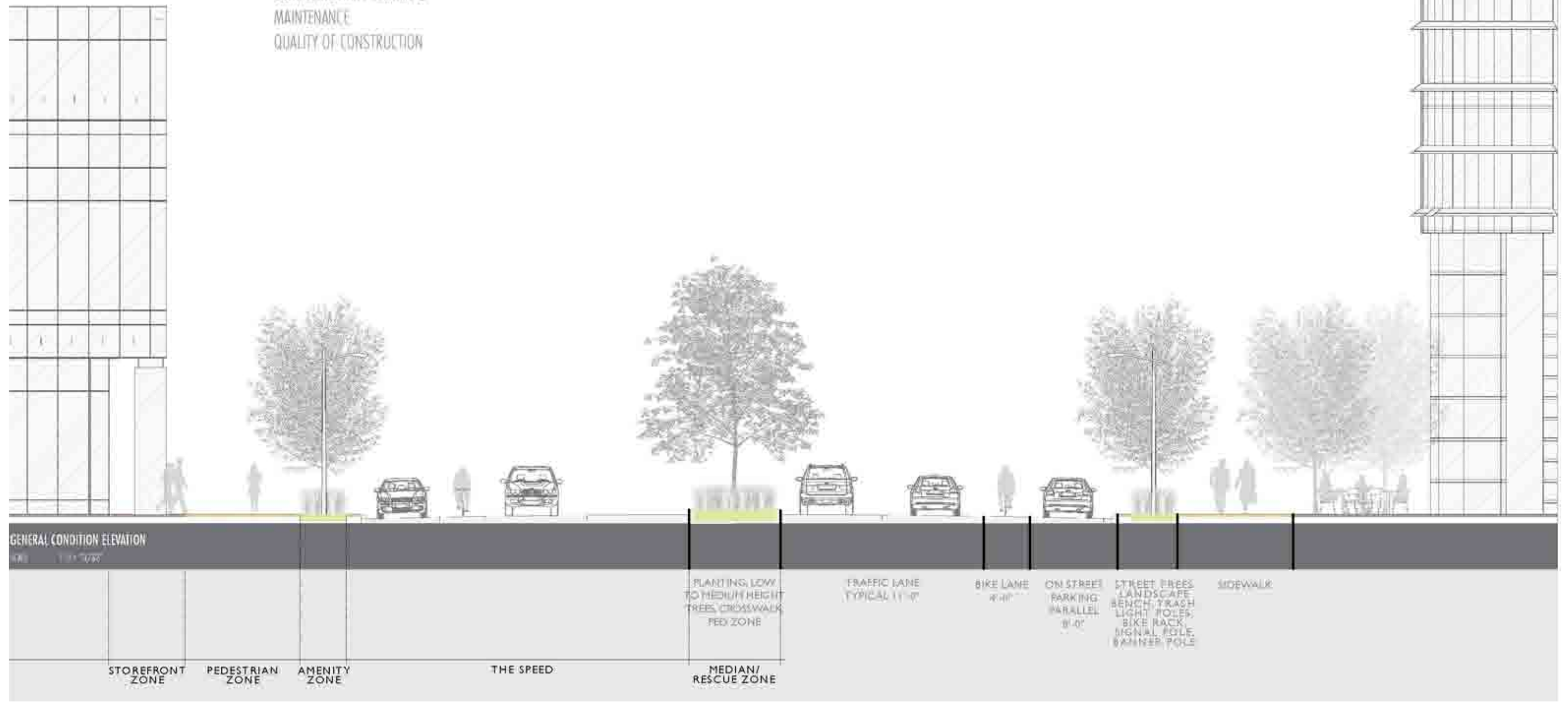
- PROVIDE TWO-WAY TRAFFIC ON ALL STREETS IN THE CENTRAL BUSINESS DISTRICT EXCEPT FOR SOME SECTIONS OF COLCORD AVE AND COUCH AVE NEAR CITY HALL
- REDUCE LANEWIDTH TO 10 FEET; 11-12 FEET FOR TRANSIT ROUTES
- PROVIDE AUTOMATIC 'WALK' SIGNAL FOR PEDESTRIAN
- MAXIMIZE ON-STREET PARKING SPACES THROUGHOUT THE DISTRICT WITH PARALLEL AND ANGLED PARKING
- INTRODUCE BIKE LANES BETWEEN ON-STREET PARKING SPACES AND VEHICULAR TRAFFIC LANES ON CERTAIN STREETS
- CONVERT STRIPED MEDIAN ON RENO AVE TO PLANTED MEDIAN

LEGEND

	4 THROUGH LANES
	3 THROUGH LANES
	TRAFFIC LANE
	PLANTED MEDIAN
	PROJECT LIMIT

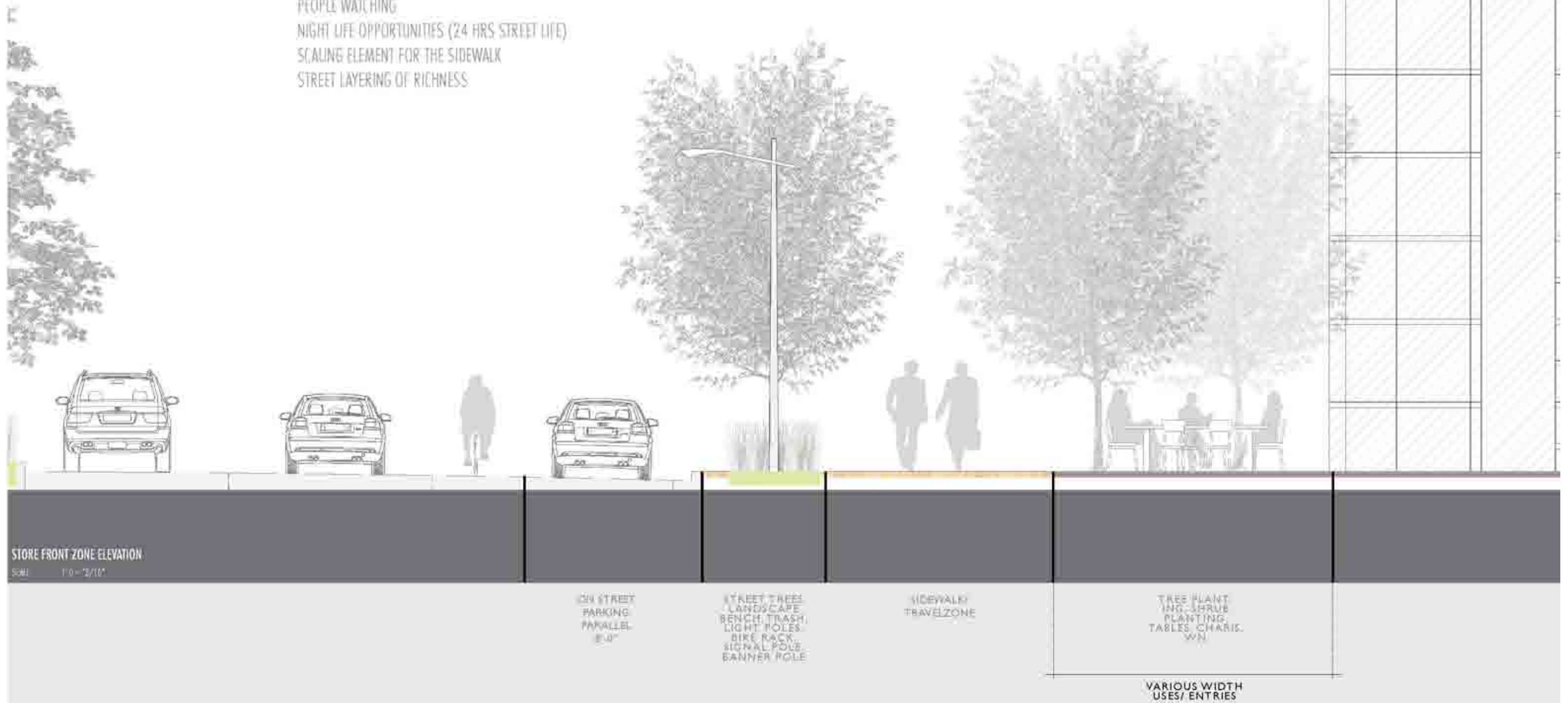
GENERAL CONDITIONS ELEVATION **>** KEY ELEMENTS

- PLACES FOR PEOPLE TO WALK WITH SOME LEISURE SPACE
- PHYSICAL COMFORT
- DEFINITION, BOUNDARIES
- QUALITIES THAT ENGAGE THE EYE
- TRANSPARENCY (ELEVATION)
- COMPLEMENTARY ELEMENTS
- MAINTENANCE
- QUALITY OF CONSTRUCTION



KEY ELEMENTS

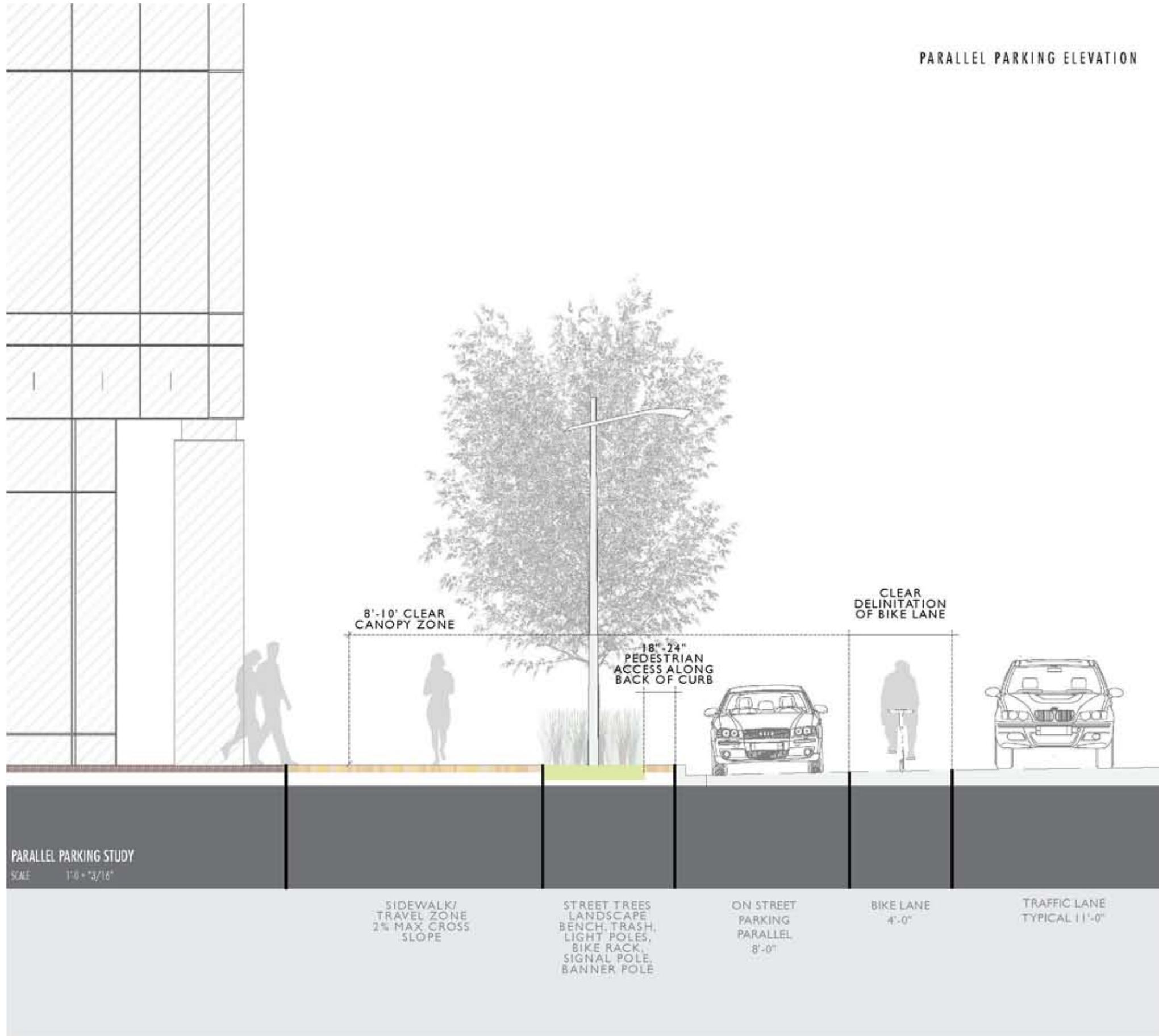
- KEY CONTRIBUTING QUALITY TO GREAT STREET
- CONTEXT OR LOCATION SPECIFIC
- OPPORTUNITY FOR INCREASED/ ENHANCED LANDSCAPE
- MOVEABLE SEATING
- CREATION OF PUBLIC, / PRIVATE SPACES
- PEOPLE WATCHING
- NIGHT LIFE OPPORTUNITIES (24 HRS STREET LIFE)
- SCALING ELEMENT FOR THE SIDEWALK
- STREET LAYERING OF RICHNESS

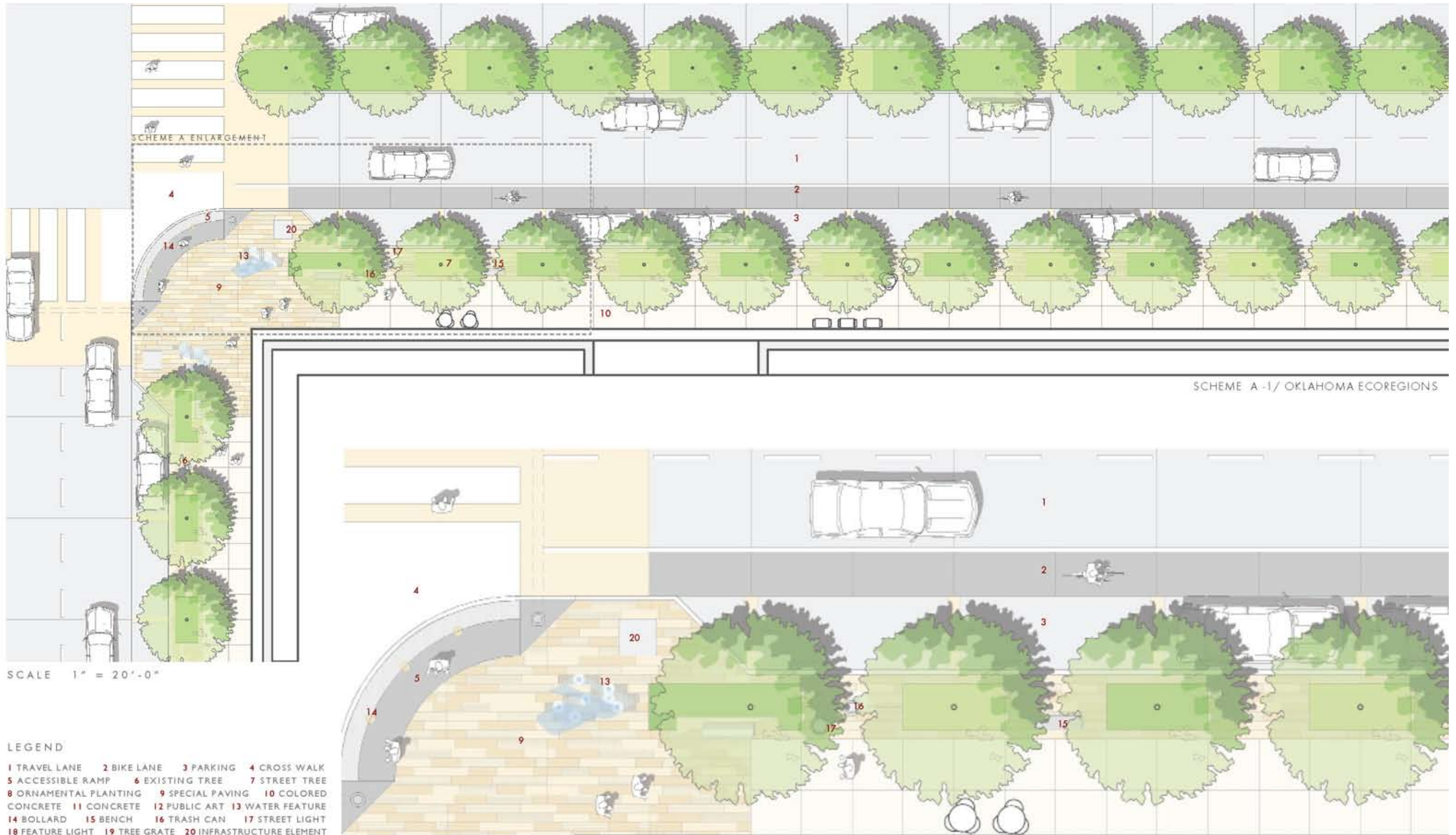


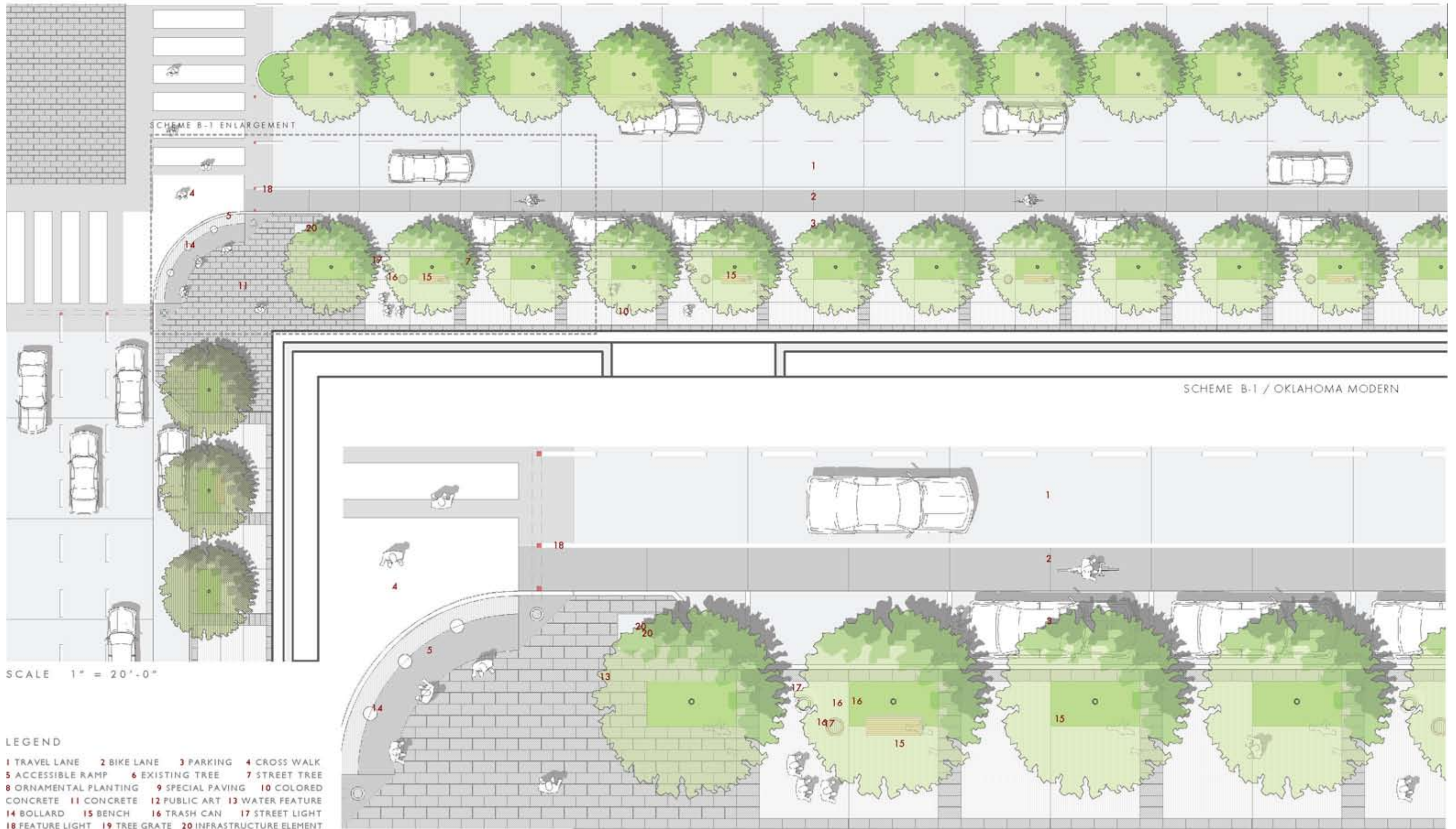
PARALLEL PARKING ELEVATION

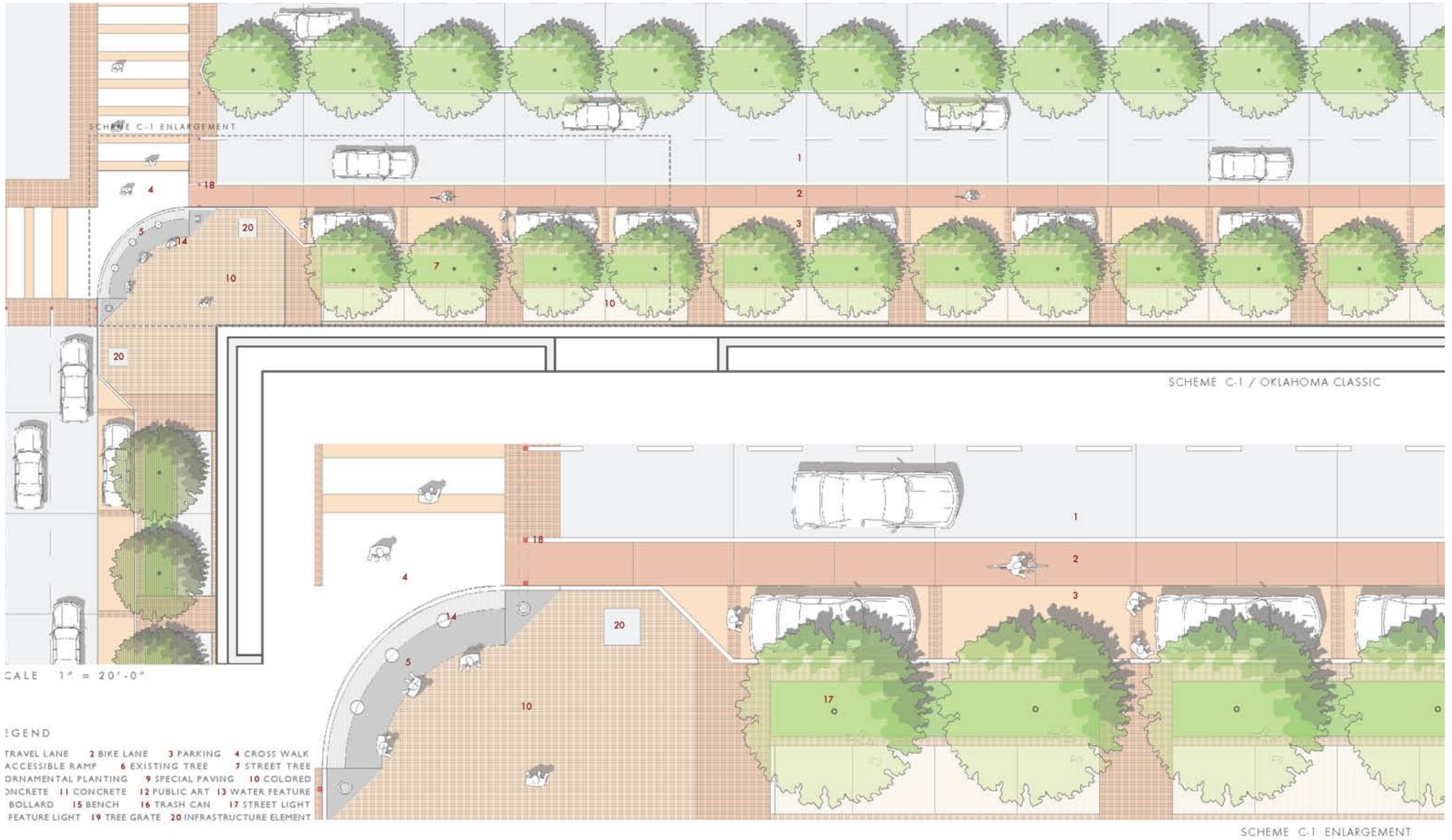
AMENITY ZONE CONTRIBUTING QUALITIES

- TREES
- BEGINNING AND ENDING
- DIVERSITY
- SPECIAL DESIGN FEATURES (LIGHTS)
- PLACES
- SLOPE
- PARKING
- CONTRAST









MYRIAD BOTANICAL GARDENS







CONSIDER AN **ACTIVE** PARK THAT IS **PROGRAMMED**



CONSIDER A **GREAT** PARK THAT IS **FASCINATING**



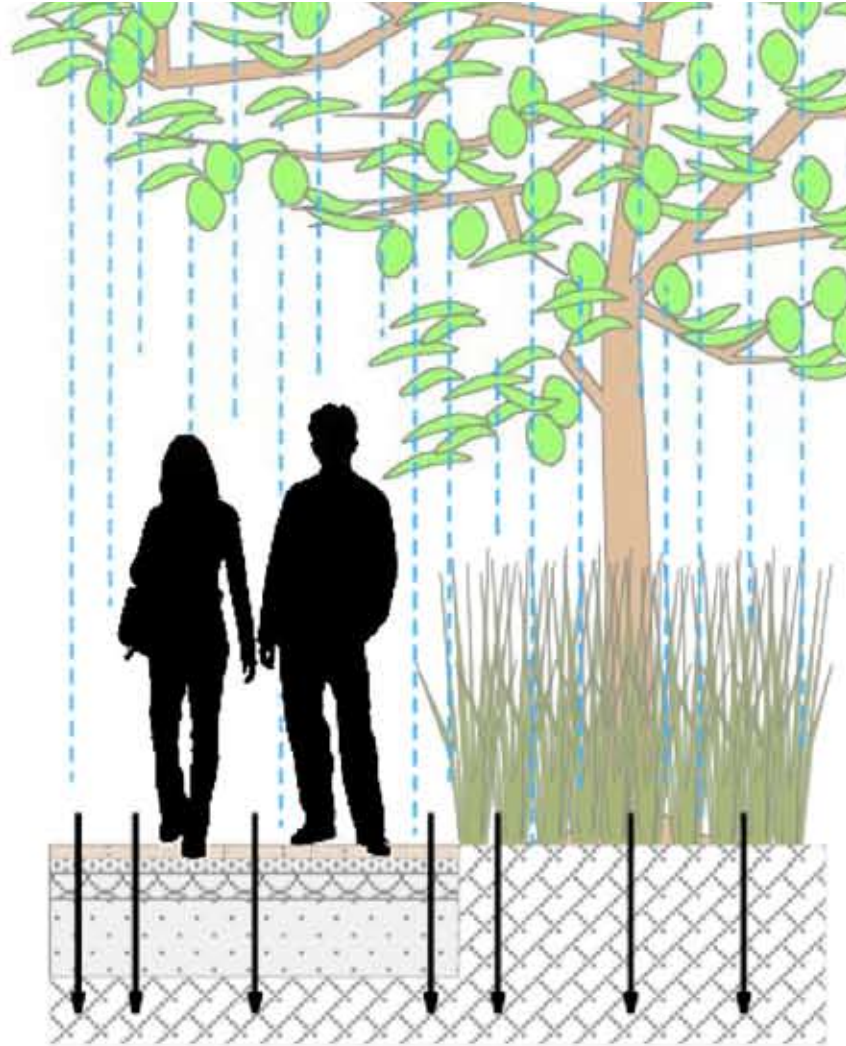
CONSIDER A **GREAT** PARK THAT IS **FASCINATING**



CONSIDER A **PARK** FOR ALL **PEOPLE**



CONSIDER A PARK THAT IS **SEASONAL**



WATER EFFICIENT LANDSCAPING

STORMWATER INFILTRATION

WATER USE REDUCTION

LIGHT POLLUTION REDUCTION

MATERIAL REUSE

INNOVATION IN DESIGN

USE OF REGIONAL MATERIALS

CONSIDER A **BOTANICAL EXPERIENCE** THAT IS ROOTED IN **SUSTAINABLE PRINCIPLES**



CONSIDER **NEW BUILDINGS** AS KEY ELEMENTS THAT **ACTIVATE THE PARK**



FARMERS MARKET



DOG PARK



GAMES AREA



READING ROOM

CONSIDER A VARIETY OF **PROGRAMMED SPACES** AS KEY ELEMENTS THAT **ACTIVATE THE PARK**



Legend

- A Crystal Bridge
- B The Pond
- C Bridge
- D Water Stage
- E Event Plaza
- F Service Entry
- G Arts Plaza
- H Restaurant
- I Monument Entry Sign
- J Water Feature
- K Restaurant Activity Lawn (9000 sf)
- L Performance Pavilion
- M Cafe Pavilion
- N Botanical Garden (210,500 sf)
- O The Groves
- P Event Lawn (28,000 sf)
- Q Vehicular Drop Off
- R Cafe Activity Lawn (7400 sf)
- S Children's Garden (25,000 sf)
- T Dog Park (5,500 sf)
- U On Street Parking (80 spaces)
- V Entry Plaza w/ Seasonal Ice Rink (7,400 sf)

Scale: NTS

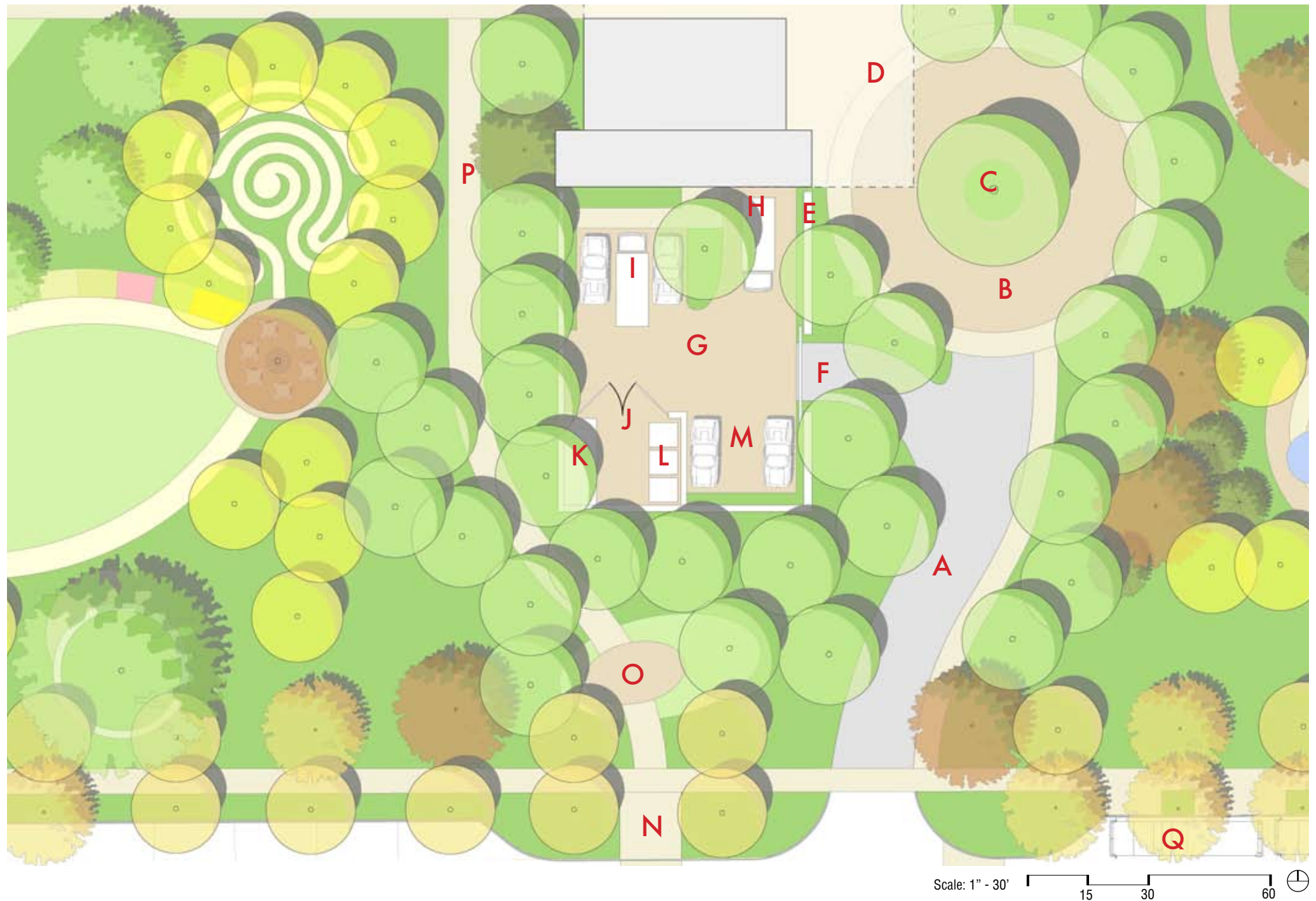


MYRIAD BOTANICAL GARDENS OVERALL PLAN



SOUTH ENTRY AERIAL





Legend

- A 24' Entry Drive
- B 70' diameter Auto Court
- C Specimen Tree
- D 8' Pedestrian Path
- E Screen Wall with Gate
- F 15' Service Entry
- G Service Court
- H 18' Loading Stall
- I 3 - 9' x 25' Stalls
- J Utility Screen
- K Generator
- L Rolling Dumpster
- M 9' x 20' Stall
- N Core to Shore Connection
- O Plaza
- P 12' Core to Shore Path
- Q Bus Parking

SOUTH ENTRY PLAN



RESTAURANT SITE AERIAL

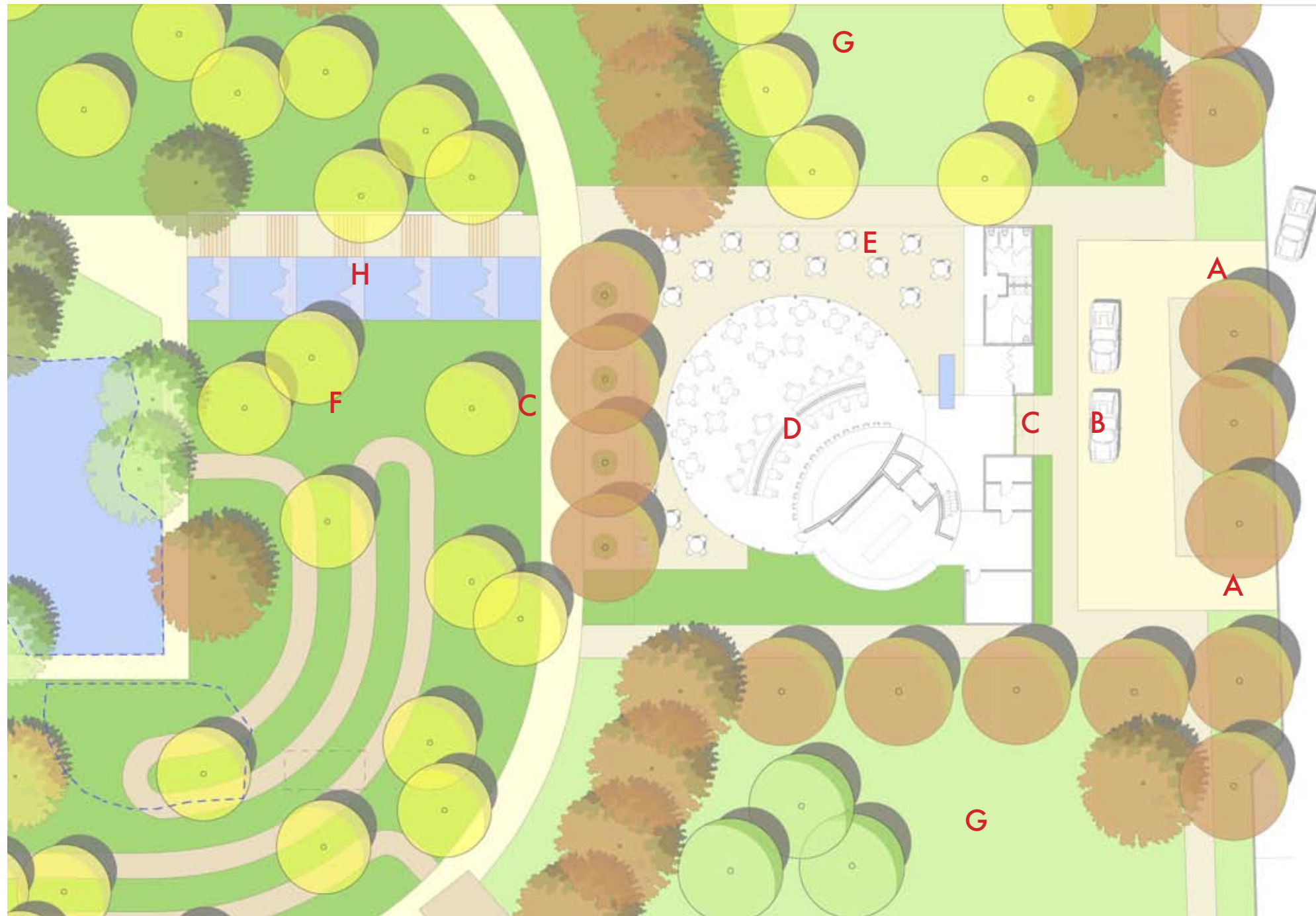




RESTAURANT SITE: EXISTING PHOTOS

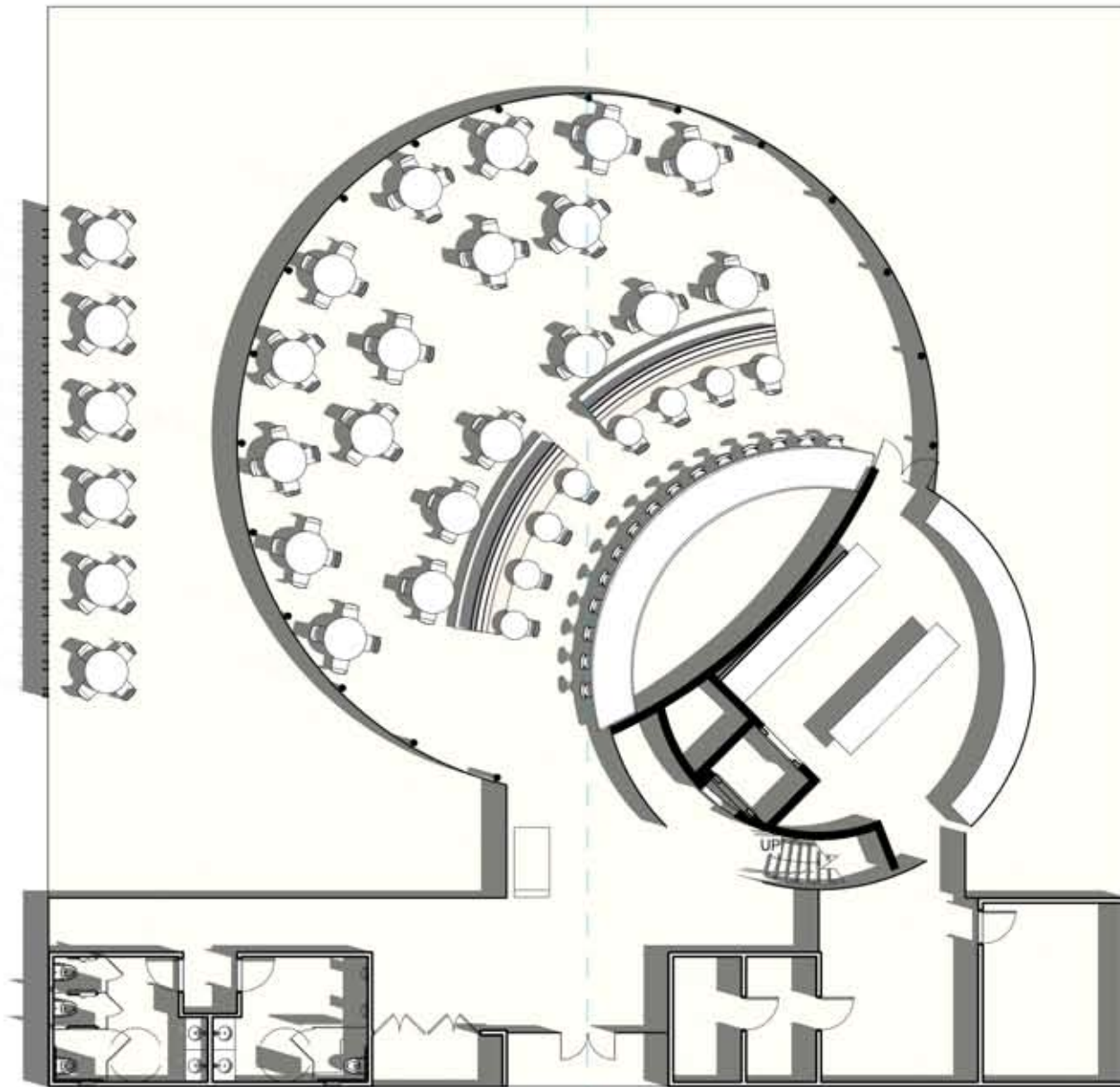
Legend

- A Curb Cut
- B Auto Court
- C Pedestrian Path
- D Restaurant (5750 sf)
- E Outdoor Dining
- F Botanical Gardens
- G Lawn
- H Water Stair

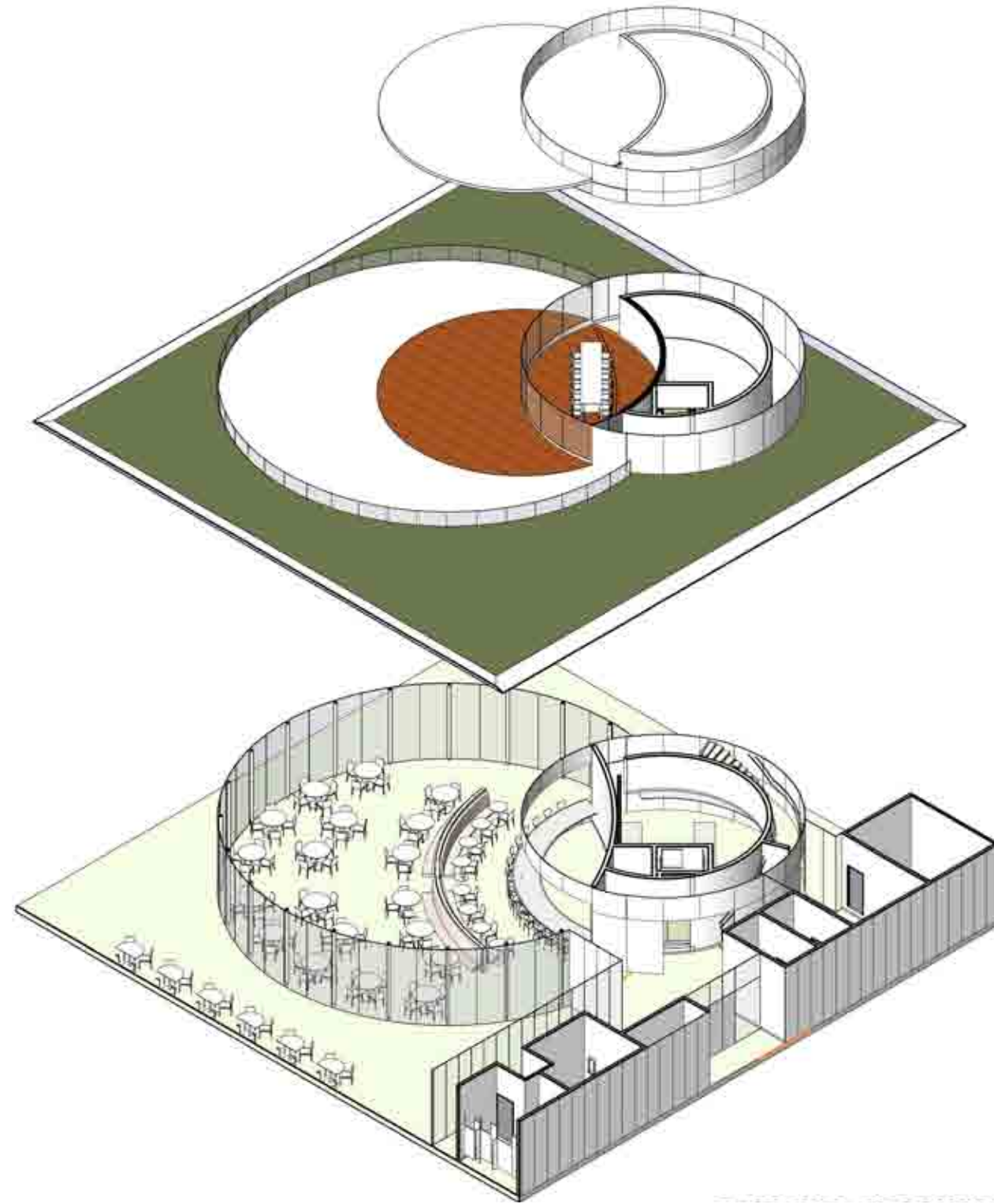


Scale: 1" = 30' 15 30 60

RESTAURANT



RESTAURANT - PLANS



RESTAURANT - AXONOMETRICS



CAFE SITE AERIAL

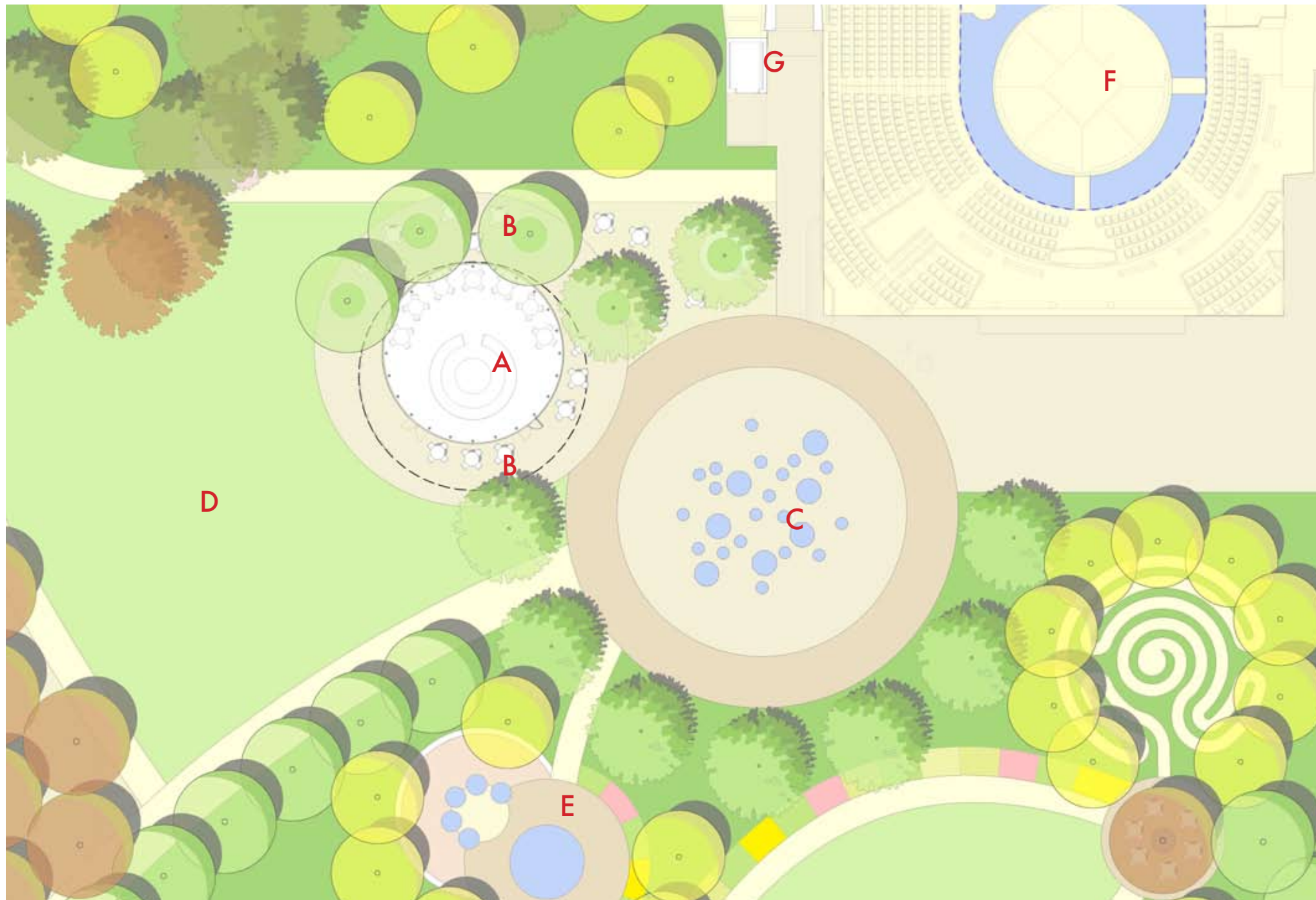




CAFE SITE: EXISTING PHOTOS

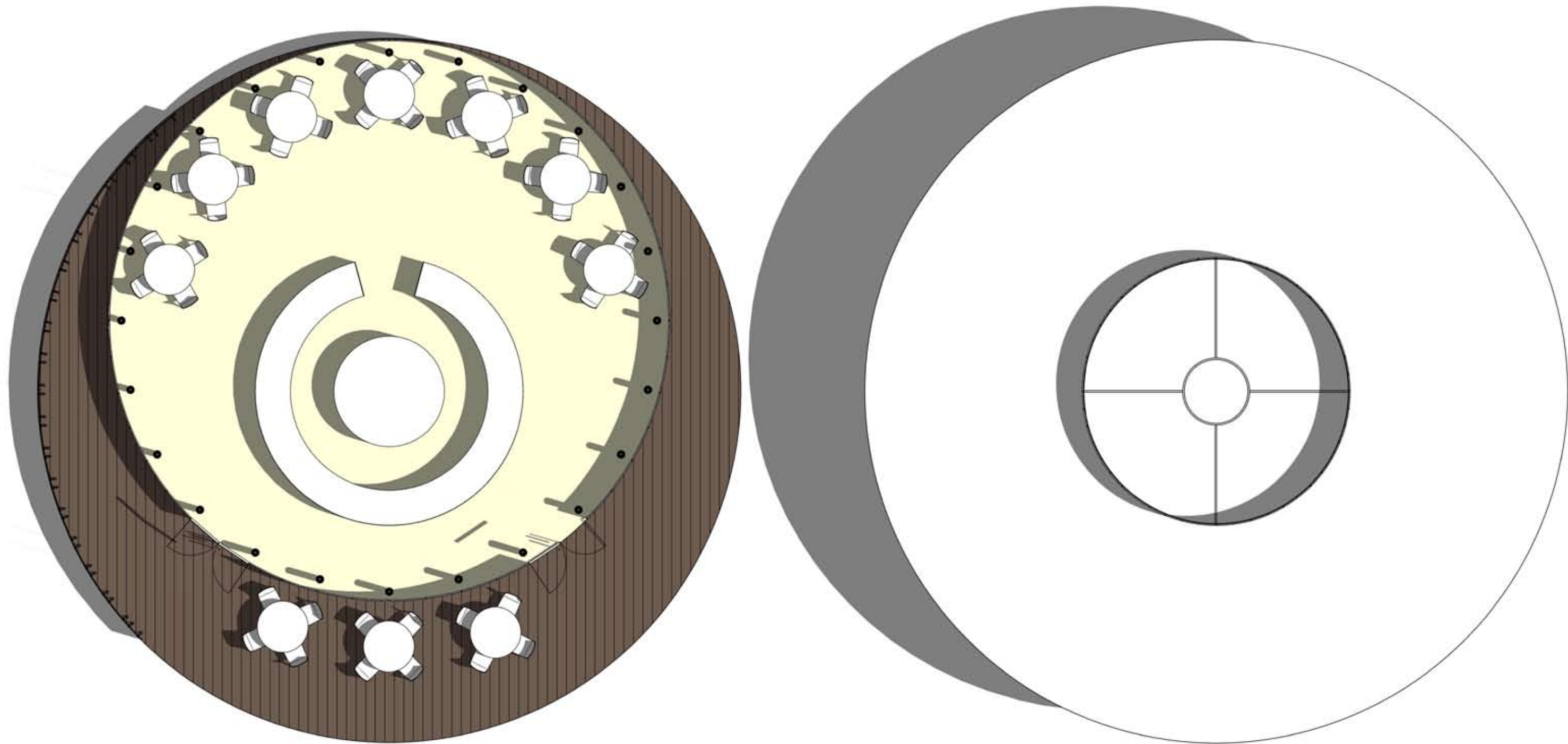
Legend

- A Cafe
- B Outdoor Dining
- C Fountain Plaza
- D Event Lawn
- E Children's Garden
- F Water Stage
- G Elevator

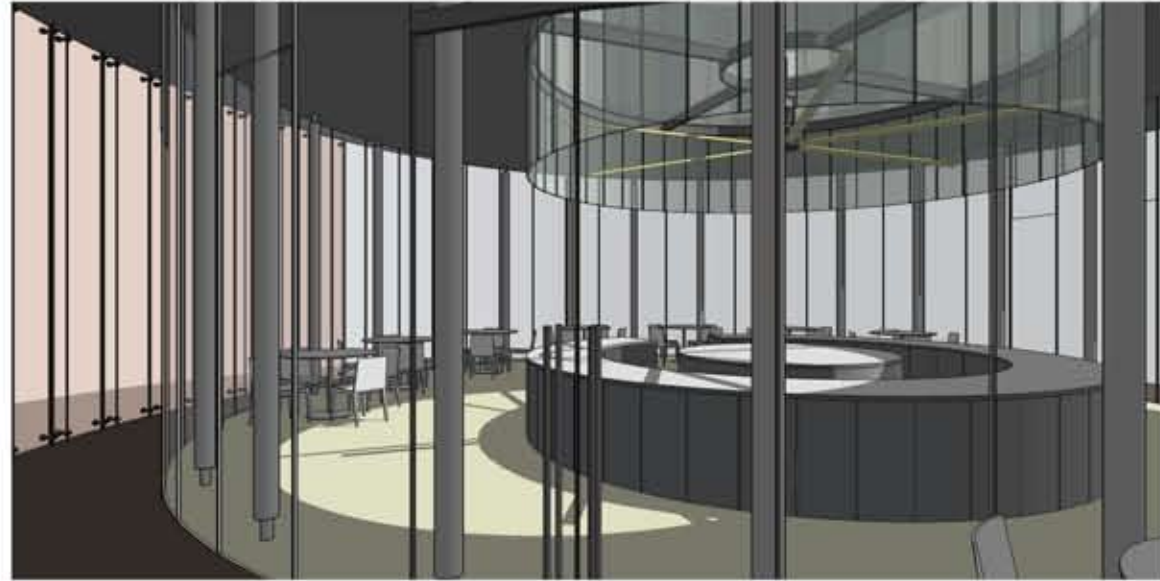


Scale: 1" = 30' 15 30 60

CAFE - OPTION 1



CAFE - OPTION 1 PLANS



CAFE - OPTION 1 PERSPECTIVES

Legend

- A Entry
- B Water Bowl
- C Berm



NEW DOG PARK LOCATION

T H E O F F I C E O F
J A M E S B U R N E T T
L A N D S C A P E A R C H I T E C T U R E

415 S. CEDROS AVE., SUITE 260
SOLANA BEACH, CA 92075
P 858.793.6970 F858.793.6905

3313 D'AMICO AVENUE
HOUSTON, TEXAS 77019
P 713.529.9919 F713.529.9955

W W W . O J B . C O M