

## LEVELING 101

### Leveling classes

1. Refer to USEF rules (AR110.2.d) for leveling up (The new rule passed at the 2016 Convention for Leveling Up does not go into effect with USEF until Dec 1, 2016)
2. To find you level 1<sup>st</sup> qualify the horse in the section *then the rider* FOR THE CORRECT LEVEL
3. Ribbons won within a Section / Category do not count in reckoning Select Rider status if the rider/driver transfers to a new section / category.
4. It does not matter if they rode a Arabian or HA/AA
5. *If you are a select rider on Dec 1 of the previous year, you are a select rider for the current show year.* (Dec 1, 2015 for the 2016 show year) **Wins after Dec 1 do not count toward Select Status.**
6. Achievement Leveling Points are not earned in Walk/Trot/Jog classes and will not count toward the Achievement Leveling Program.
7. No Achievement Leveling Award points will be awarded in one horse classes at any AHA recognized competition. See Point Table for Shows in ACH 105.1
8. Achievement Leveling points awarded to an exhibitor competing as a Youth will be maintained by that exhibitor when they move forward and compete in the Adult Amateur Achievement Levels.
9. Achievement Leveling points awarded to an exhibitor competing as a Youth and/or an Adult Amateur do not count against a rider crossing over into the Open Achievement Levels.
10. An exhibitor can return to a lower level in a particular section if the exhibitor has not earned any points (National, Regional or Regular Competition) in the past 10 consecutive years in that particular that defined section.
11. **Primetime – Open to AHA members which are USEF/EC amateurs 60 years of age or older and may participate in all disciplines with the exception of Reining. Reining Primetime exhibitors are 50 years of age or older**

**SELECT RIDER STATUS STARTS OVER IF YOU TRANSFER TO A NEW SECTION / CATEGORY** i.e Hunter Section to Western Section

CATEGORY / SECTION	CLASSES INCLUDED IN CATEGORY / SECTION	
TRAIL	Trail	
REINING	Reining	Reining Seat Equitation
HUNTER SECTION	Hunter Pleasure	Hunter Seat Equ Not To Jump
WESTERN SECTION	Western Pleasure	Western Horsemanship
SADDLE SEAT	English Pleasure / Show Hack Country English Pleasure / Park	Saddle Seat Equitation

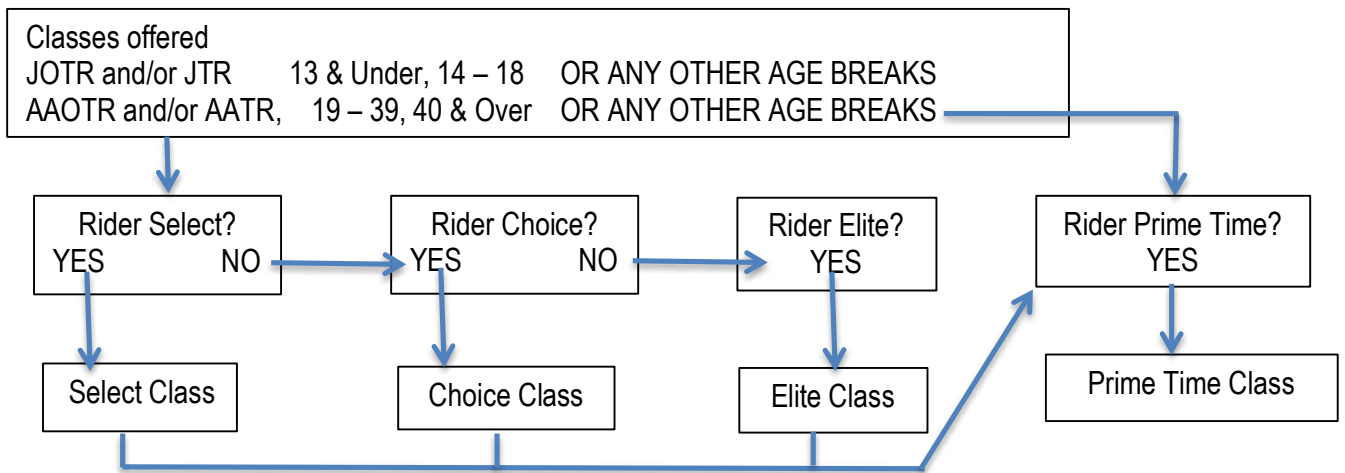
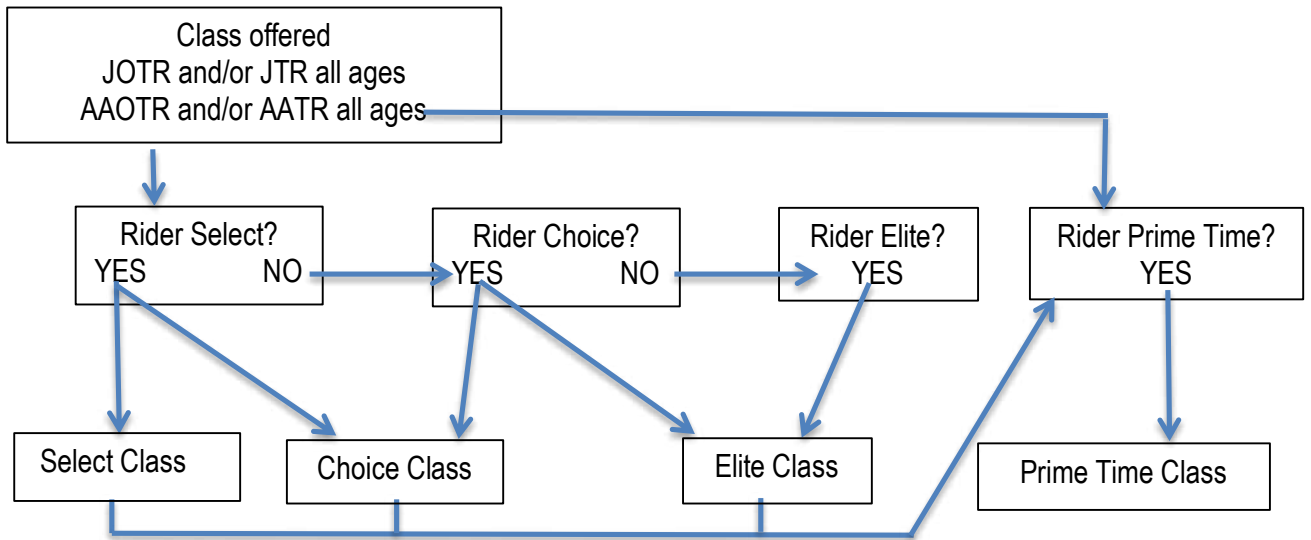
### FOR REINING CLASSES

**New for 2016 for Reining – along with the AHA points, riders can't have earned enough awards to be ineligible as an NRHA Rookie, Limited or Intermediate Rider.**

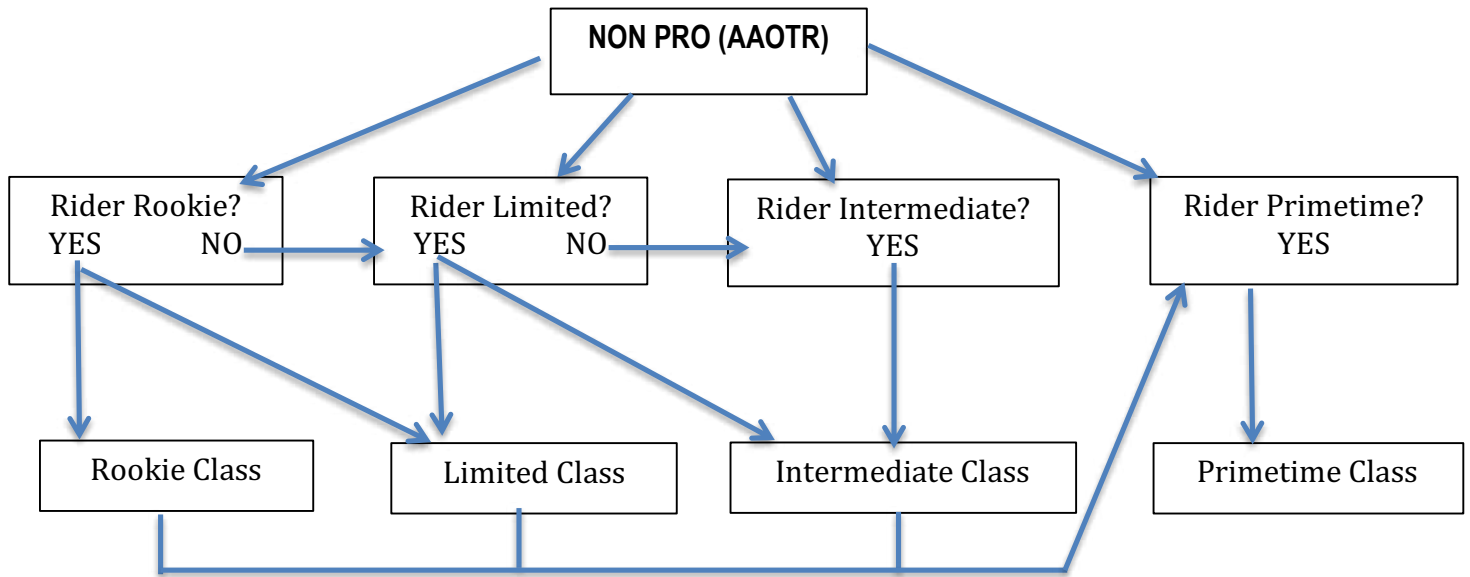
I QUALIFY IN THE FOLLOWING IF I HAVE RECEIVED	NATIONAL Achievement Points	REGIONALS / REGULAR Achievement Points
ROOKIE NON PRO	Between 0 - 20 PTS	Between 0 - 70 PTS OR has not "leveled out" of the National level in the Reining Section.
LIMITED OPEN OR NON PRO	Between 0 - 60 PTS	Between 0 - 150 PTS OR has not "leveled out" of the National level in the Reining Section.
INTERMEDIATE OPEN OR NON PRO	Not more than 90 PTS	Not more than 250 PTS OR Has not "leveled out" of the National level in the Reining Section
PRIME TIME NON PRO	AHA member, USEF amateur 50 years of age or older. Must enter one or more of the above Non Pro or the AAOTR class	AHA member, USEF amateur 50 years of age or older

# Can and can't do's

New Leveling up rules passed at the 2016 AHA convention does not go into effect with USEF until Dec 1, 2016



# Reining Achievement Leveling



**FOR CLASSES IN:  
PARK, ENGLISH PLEASURE, COUNTRY ENGLISH PLEASURE, WESTERN PLEASURE, HUNTER PLEASURE, TRAIL**

<b>ACHIEVEMENT LEVELING PROGRAM - AMATEURS</b> <i>Points apply to a specific, individual section</i>		
<b>I QUALIFY IN THE FOLLOWING IF I HAVE RECEIVED</b>	<b>NATIONAL Achievement Points</b>	<b>REGIONALS / REGULAR Achievement Points</b>
<b>Select Amateur</b>	Between <b>0 - 20</b> PTS	Between <b>0 to 75</b> PTS <b>OR</b> has not leveled out of the National Select Amateur Level
<b>Choice Amateur</b>	Between <b>30 - 60</b> PTS	Between <b>75.5+ to 200</b> PTS <b>OR</b> has not leveled out of the National Choice Amateur Level
<b>Elite Amateur</b>	<b>70</b> or more PTS	more than <b>200.5+</b> PTS
<b>Primetime</b>	AHA member, USEF amateur <b>60</b> years of age or older	AHA member, USEF amateur <b>60</b> years of age or older

<b>ACHIEVEMENT LEVELING PROGRAM - YOUTH</b>		
<b>I QUALIFY IN THE FOLLOWING IF I HAVE RECEIVED</b>	<b>NATIONAL Achievement Points</b>	<b>REGIONALS / REGULAR Achievement Points</b>
<b>Select Youth</b>	Between <b>0 - 20</b> PTS	Between <b>0 to 100</b> PTS <b>OR</b> has not leveled out of the National Select Amateur Level
<b>Choice Youth</b>	Between <b>30 - 60</b> PTS	Between <b>100.5+ to 200</b> PTS <b>OR</b> has not leveled out of the National Choice Amateur Level
<b>Elite Youth</b>	<b>70</b> or more PTS	more than <b>200.5+</b> PTS

<b>ACHIEVEMENT LEVELING PROGRAM - OPEN</b>		
<b>I QUALIFY IN THE FOLLOWING IF I HAVE RECEIVED</b>	<b>NATIONAL Achievement Points</b>	<b>REGIONALS / REGULAR Achievement Points</b>
<b>Select Open</b>	Between <b>0 - 20</b> PTS	Between <b>0 - 100</b> PTS <b>OR</b> has not leveled out of the National Select Amateur Level
<b>Choice Open</b>	Between <b>30 - 60</b> PTS	Between <b>100.5+ - 250</b> PTS <b>OR</b> has not leveled out of the National Choice Amateur Level
<b>Elite Open</b>	<b>70</b> or more PTS	more than <b>250.5+</b> PTS