

TOUR OPTIONS

OPTION

1

FULL TOUR

- 1 Enter The Bridge at the Lady Street entrance. Follow line into the College Worship area.
- 2 Take the marked stairs to the 2nd floor. The 2nd floor includes Erskine Seminary, the Church Library, and the Women of the Church facility.
- 3 Take the marked stairs up to the 3rd floor. The 3rd floor is the church staff offices.
- 4 Take marked stairs down to the basement. Here is the High School Ministry space.
- 5 Take marked steps (the new stairs) up to Coffee Shop/Book Ministry. After your visit here, exit The Bridge from the rear of the building.

OPTION

2

1ST FLOOR/BASEMENT

- 1 Enter The Bridge at the Lady Street entrance. Follow line into the College Worship area.
- 2 Take marked stairs down to the basement. Here is the High School Ministry space.
- 3 Take marked steps (the new stairs) up to Coffee Shop/Book Ministry. After your visit here, exit The Bridge from the rear of the building.

8:30 service worshipers – Come visit The Bridge after the service entering the front door and following the tour guidelines found in this brochure.

11:15 service worshipers – You have two options. For those unable to stay after the service, take your tour of The Bridge prior to the service at approximately 10:45. For those able to stay after the service, take your tour then.

Trouble taking stairs? Volunteers will be there to take you on an “elevator” tour. Don’t forget to visit the tent. You can’t miss it!

PLEASE BRING THIS BROCHURE WITH YOU ON FEBRUARY 5th



TOUR GUIDE

The time has finally come, and February 5 is your opportunity to view the transformation of 1400 Lady Street into a facility that will make a significant impact on the future ministry opportunities of First Presbyterian Church. That is the day of the Open House which will feature a tour of the building in between our worship services and following the 11:15 service (note tour details in this brochure). In addition to the tour, the time will feature a tent where we will enjoy the food delights of Chef Richard and his staff. Most of all, we can enjoy time mingling with each other.

Why call it, "The Bridge"? Because, in part, the name rose to the surface in the initial discussions surrounding the purpose of this building. A bridge into the community, especially the college/university community. The Bridge includes a facility that is attractive, functional and ideally located to introduce generations of college students to the gospel.

But something deeper: a bridge into the future. The building (and I'm referring to the finished product with its glass facade that will emerge in the next two months) is and will be in complete contrast with our current campus. The old and the new. The past (and what a treasured past it is!) and the future with all the opportunities the Lord provides for ministry to our children and grandchildren.

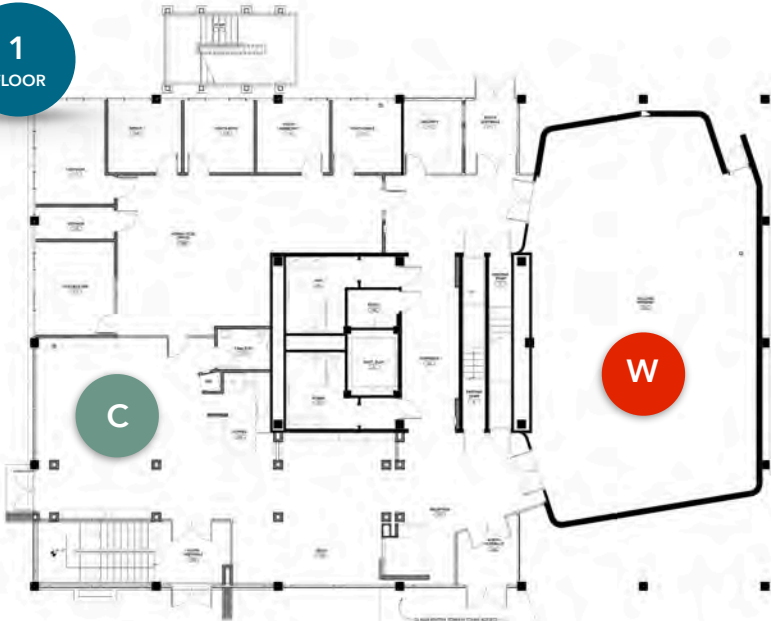
What will you see? You will see a building whose internal structure has been radically altered to meet the needs of a growing and thriving church community. Almost nothing remains of the old order of things.

Thank you for your generous, prayerful, and financial support of The Bridge! Join me in praying that the Lord will honor our trust in his goodness and grace by blessing this facility for the increase of the Kingdom of God.

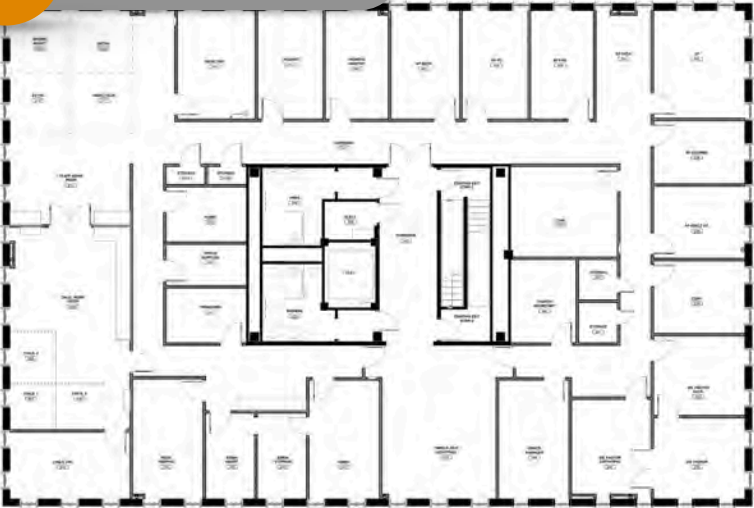
Now, please enjoy the tour. Welcome to The Bridge!

Derek W H Thomas
Senior Minister

1 FLOOR



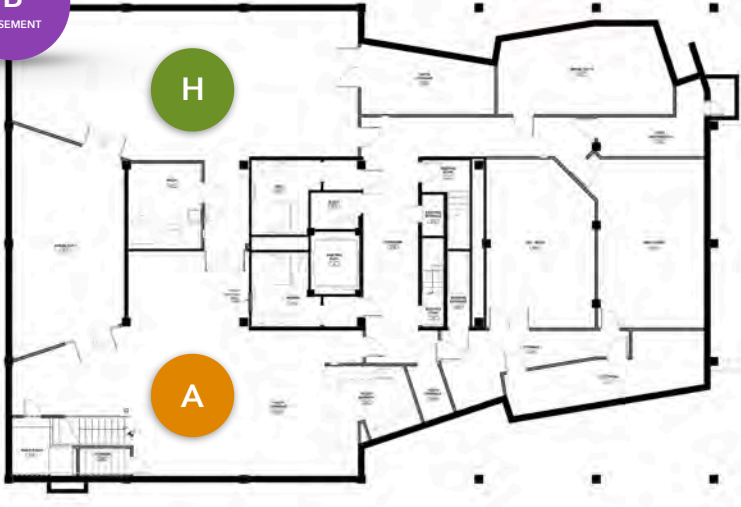
3 FLOOR STAFF OFFICES



2 FLOOR



B BASEMENT



- W** College Worship Center
- C** Coffee Shop & Book Ministry
- woc** Women of the Church
- E** Erskine Seminary
- L** Church Library

- H** High School Meeting Area
- A** High School Activity Area