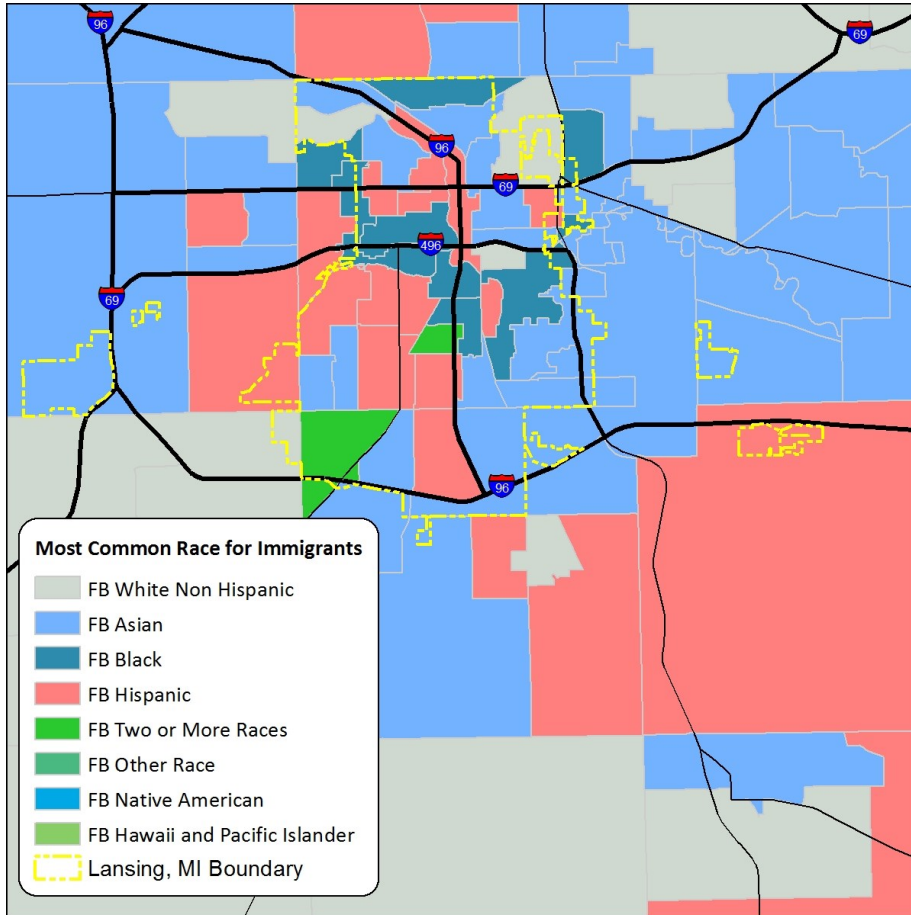


Immigrants in Lansing City, MI 2010-2014

iDod: Fact Sheets with Data on Immigrants, Customized For You, For Free.

Most Common Races for Immigrants Living in Lansing



The map on the left presents the most common races among immigrants in each Census tract throughout the Lansing, Michigan area. The largest communities of immigrants are Asian, Hispanic, or Black.

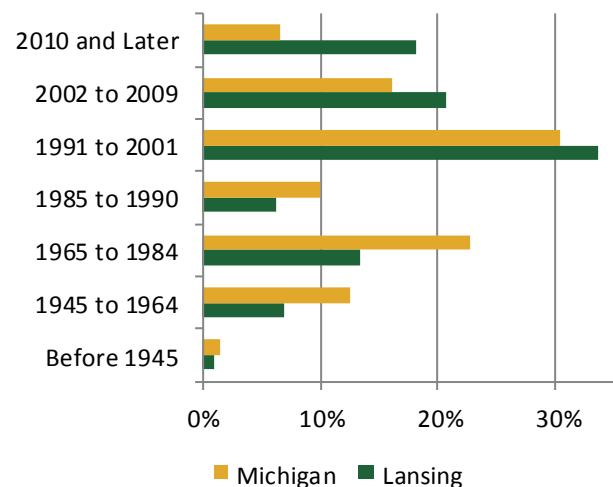
The chart below and to the left indicates that immigrant heads of household in Michigan and Lansing are most likely to be employed in private companies. Yet in Lansing there is a large group of those working in non-profits and local government. Lansing also has a smaller proportion of self-employed immigrant heads of household who are incorporated, relative to Michigan.

The graph below shows that more than two-thirds (72.3%) of immigrants living in Lansing came to the United States after 1990. The majority (53.2%) of immigrant heads of household in Michigan came after 1990 as well. Note, that the immigrant heads of household in Lansing arrived to the United States in larger proportions more recently. This suggests a newer population of immigrant households or a rapidly growing population.

Class of Worker for Immigrant Heads of Household Living in Michigan and Lansing

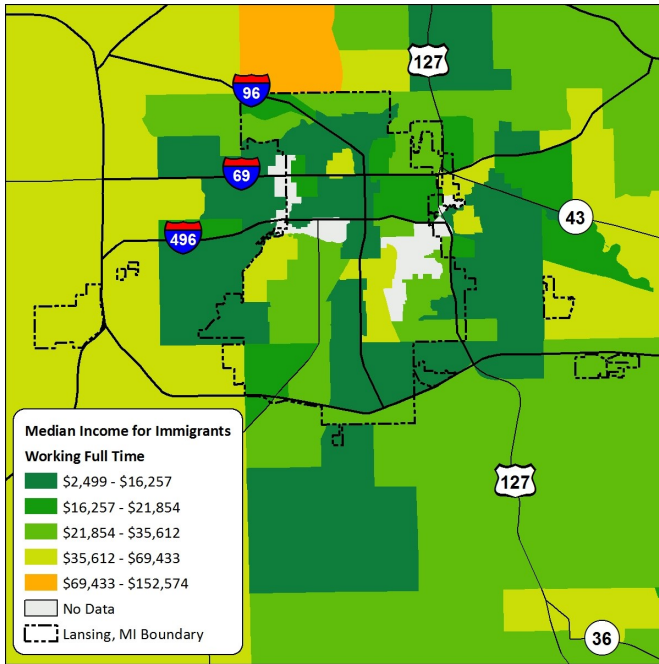
	Lansing	Michigan
Wage/salary, private	66%	71%
Wage/salary at non-profit	11%	8%
State government employee	10%	4%
Self-employed (not incorporated)	4%	5%
Local government employee	4%	3%
Not Reported	2%	1%
Self-employed (incorporated)	2%	6%
Federal government employee	--	1%
Unpaid family worker	--	<1%
Estimated Total Immigrant Workers (age 16+)	2,778	175,474

Year of Immigration for Immigrant Heads of Household Living in Michigan and Lansing



Immigrants in Lansing City, MI 2010-2014

Median Income for Full-Time Working Immigrants



The map on the left presents the median personal income among full-time employed immigrant workers in each Census tract throughout the city of Lansing. Immigrants living in the suburban areas north of Lansing, near the airport, reported the highest median incomes.

The top workforce industry in Michigan for immigrant heads of household is car manufacturing. For Lansing, the major industry for the same group is employment at colleges, universities and professional schools. Lansing's immigrant heads of household work in many of the same top industries as those in Michigan generally. Industries where Lansing stands out are restaurants, apparel manufacturing, plastics, services to buildings and department stores. Michigan, in contrast has a higher proportion of immigrant heads of household in computer design and architecture industries.

Top Ten Industries for Immigrant Heads of Household Workers (age 16+) Living in Lansing and Michigan

Michigan		Lansing	
Motor Vehicles and Motor Vehicle Equipment Manufacturing	13%	Colleges, Universities, and Professional Schools, Including Junior Colleges	16%
Colleges, Universities, and Professional Schools, Including Junior Colleges	7%	Construction	6%
Restaurants and Other Food Services	6%	Motor Vehicles and Motor Vehicle Equipment Manufacturing	6%
Hospitals	6%	Restaurants and Other Food Services	4%
Construction	4%	Cut and Sew Apparel Manufacturing	4%
Computer Systems Design and Related Services	3%	Elementary and Secondary Schools	4%
Elementary and Secondary Schools	2%	Plastics Product Manufacturing	4%
Offices Of Physicians	2%	Grocery Stores	4%
Architectural, Engineering, and Related Services	2%	Services To Buildings and Dwellings	3%
Grocery Stores	1%	Department Stores and Discount Stores	3%
Workers In All Other Industries	54%	Workers In All Other Industries	46%
Estimated Total Immigrant Workers	175,474	Estimated Total Immigrant Workers	2,778

ABOUT THE INSTITUTE FOR IMMIGRATION RESEARCH

IIR works to refocus the immigration conversation among academics, policy-makers and the public, including the business community and media, by producing and disseminating unbiased and objective, interdisciplinary academic research related to immigrants and immigration to the United States. The Institute for Immigration Research is a joint venture between George Mason University and the Immigrant Learning Center, Inc. (ILC) of Massachusetts.

IMMIGRATION DATA ON DEMAND (iDod)

The iDod service is offered free of charge to help individuals and institutions examine the immigrant populations of their particular geography. Recipients of this data will see how immigrants provide vital contributions to the economy and society of the U.S. Ultimately, the goal of the iDod project is to create collaborations and connect people with data from their particular region or sector of interest on immigrant populations.