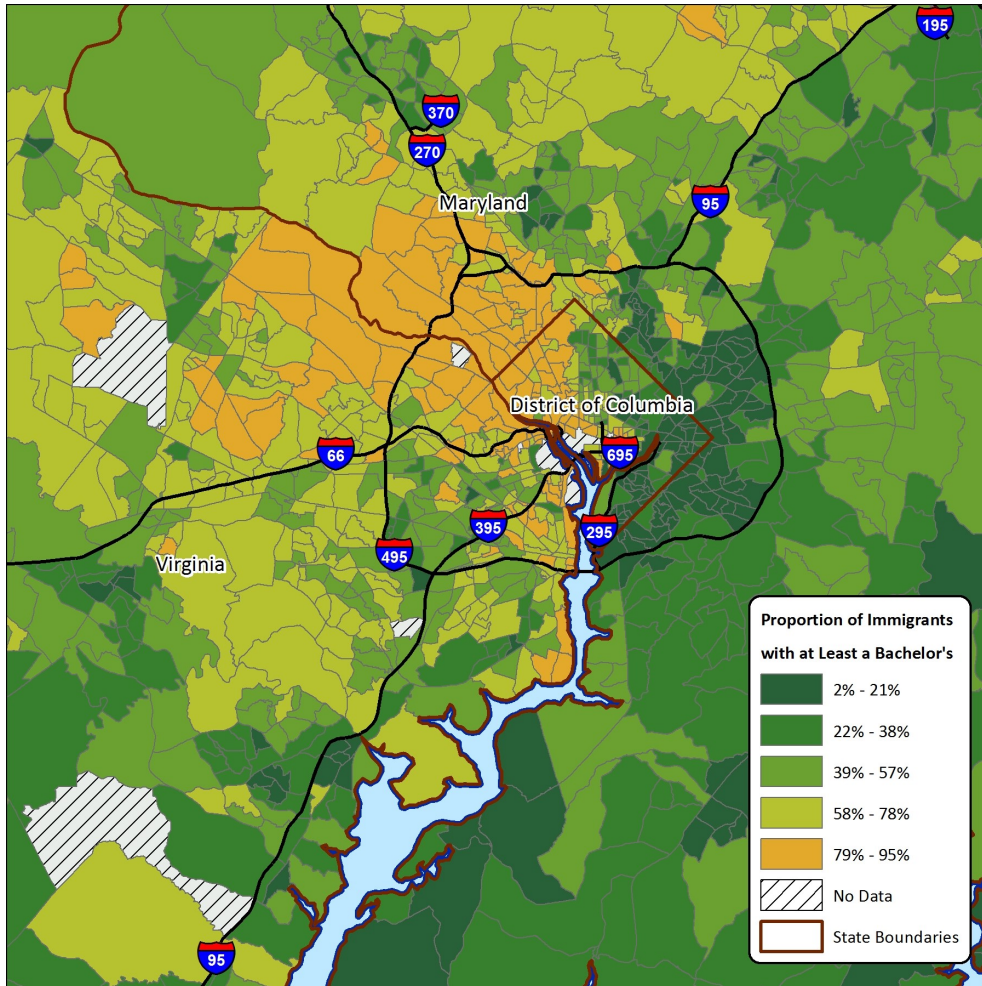


Immigrants in the Washington D.C. Metro Area, 2010-2014

iDod: Fact Sheets with Data on Immigrants, Customized For You, For Free.
Educational Attainment for Immigrants in the D.C. Metro Area



The map to the left depicts the proportion of immigrants who have at least a bachelor's degree. Note the areas in orange where more than 79 percent of immigrant in those census tracts have at least a bachelor's degree. There is a dominant pattern in this area, from east to west. Note the relatively high proportion of immigrants with Bachelor's degrees in Georgetown, Dunn Loring, Ashburn; and the low proportions of immigrants with the same levels of educational attainment in South East D.C.

Below, the poverty status of immigrant households in the D.C. metro area are presented by race and ethnicity. Note that Asian non-Hispanic households account for the highest number of immigrant households. They are also above the national poverty line, as is every household but Native American Hispanics. Over 20 percent of Native American Households are living at or below the poverty line.

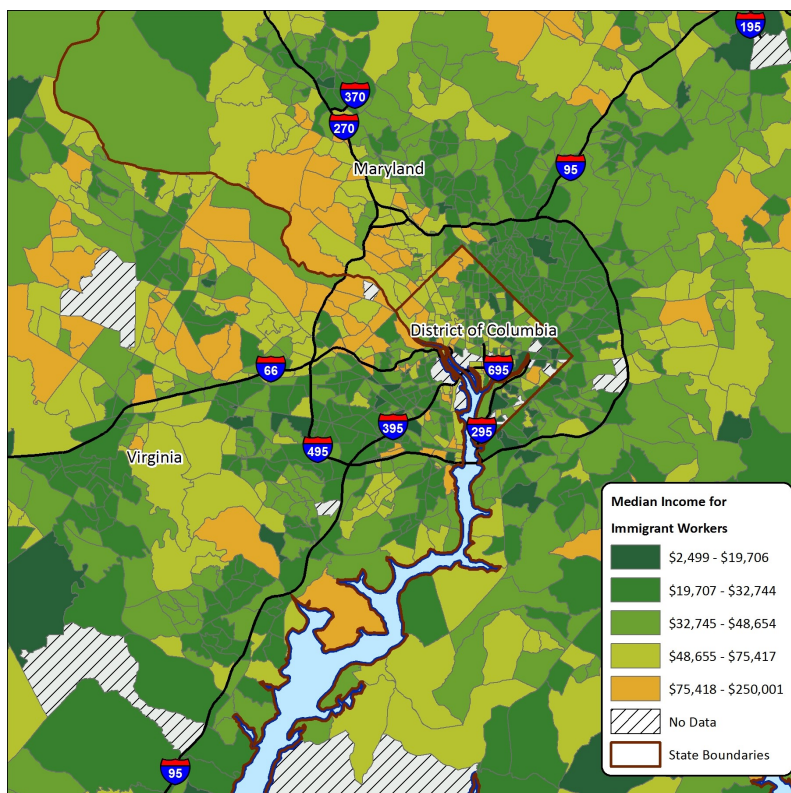
Poverty Status for Immigrant Households by Race and Ethnicity

D.C. Metro Area										
Race	Asian Non-Hispanic	Black Non-Hispanic	White Hispanic	White Non-Hispanic	Race Not Specified	Multiple Races and Ethnicities	Black Hispanic	Native American Hispanic	Asian Hispanic	Native Amer. Non-Hispanic
Above Poverty	92.1%	89.2%	89.1%	92.5%	83.7%	89.6%	86.1%	78.8%	88.8%	87.3%
At or Below Poverty	7.9%	10.8%	10.9%	7.5%	16.3%	10.4%	13.9%	21.2%	11.2%	12.7%
Estimated Immigrant Households	148,568	89,324	88,281	86,579	58,519	14,958	3,873	1,201	517	205

Source: U.S. Census Bureau. American Community Survey, 2010-2014. ipums.org extracts. Tigerline shapefiles.

Immigrants in the Washington D.C. Metro Area, 2010-2014

Median Income for Immigrants in the D.C. Metro Area



The map to the left depicts the distribution of income among immigrants in the D.C. metro area. Note that areas in orange indicate median income over \$75,417. Areas such as Falls Church in Virginia and northwest D.C. have a concentration of Census tracts with immigrants earning high incomes. However, in areas such as Franconia in Virginia, the incomes are relatively lower. There is an especially dramatic trend on the Maryland portion east of D.C., where immigrant median incomes are the lowest.

Below is the breakdown of the industries that immigrants in food preparation and servicing occupations are presented. Note that of the estimated 66,929 immigrants in these occupations, more than three fourths are in the arts, entertainment, accommodations, and food services industry. The next sizable industry is education, health, and social services.

Immigrants in Food Preparation and Servicing Occupations by Industry

D.C. Metro Area	
Industry	% of Food Preparation and Servicing Occupations
Construction	0
Manufacturing	0.1
Wholesale Trade	0.2
Retail Trade	4.5
Transportation and Warehousing	0
Information and Communications	0.1
Finance, Insurance, Real Estate and Leasing	0.4
Professional, Scientific Management, Administrative, and Waste Management Services	0.7
Education, Health, and Social Services	6.9
Arts, Entertainment, Recreation, Accommodations and Food Services	86
Other Services	0.5
Public Administration	0.4
Armed Services	0.1
Total Immigrant Population in the Food Preparation and Servicing Occupations	66,829

ABOUT THE INSTITUTE FOR IMMIGRATION RESEARCH

IIR works to refocus the immigration conversation among academics, policy-makers and the public, including the business community and media, by producing and disseminating unbiased and objective, interdisciplinary academic research related to immigrants and immigration to the United States. The Institute for Immigration Research is a joint venture between George Mason University and the Immigrant Learning Center, Inc. (ILC) of Massachusetts.

IMMIGRATION DATA ON DEMAND (iDod)

The iDod service is offered free of charge to help individuals and institutions examine the immigrant populations of their particular geography. Recipients of this data will see how immigrants provide vital contributions to the economy and society of the U.S. Ultimately, the goal of the iDod project is to create collaborations and connect people with data from their particular region or sector of interest on immigrant populations.