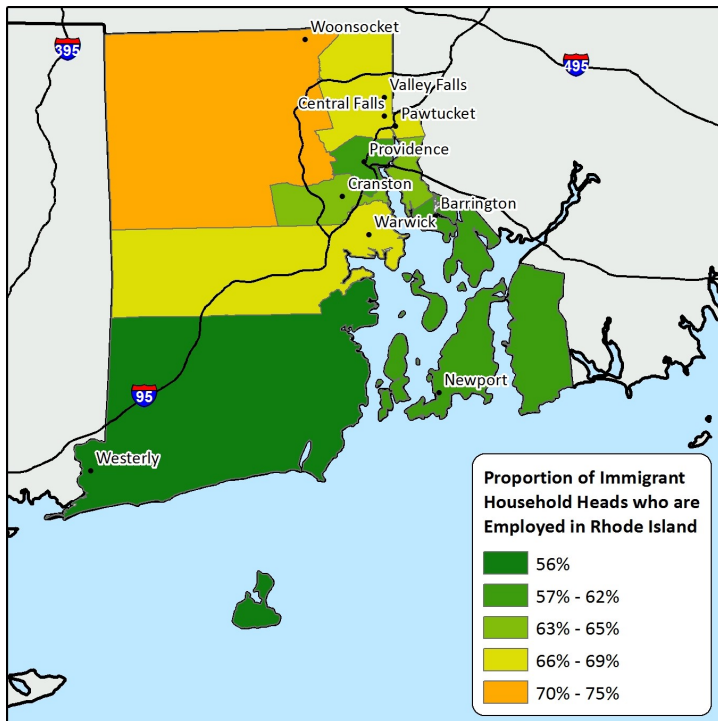


# Immigrants in Rhode Island 2015

## Proportion of Employed Immigrant Household Heads in Rhode Island

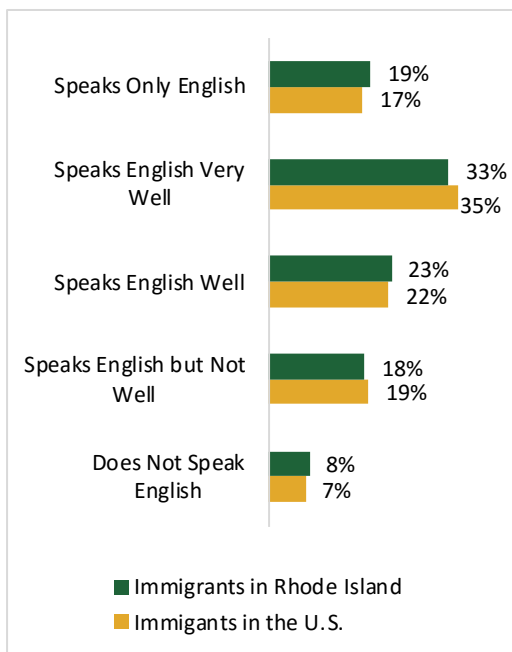


The map on the left depicts the proportion of immigrant household heads who are employed in Rhode Island by Public Use Microdata Areas (PUMA). Overall, 65 percent of immigrant household heads in Rhode Island and 70 percent of immigrant household heads in the U.S. are employed. The northwest portion of Rhode Island reported the highest percentage of employment among immigrant heads of households while the southern portion of the state near Washington County and around the city of Providence reported the lowest proportion of employed immigrant heads of households.

With regard to English proficiency, overall 52 percent of immigrant household heads in Rhode Island are proficient in English (speak very well or above). Only 8 percent of immigrant household heads in Rhode Island do not speak English.

The table on the bottom right shows the top 10 industries among employed immigrant household heads in Rhode Island. Twenty-seven percent of immigrant household head workers in Rhode Island are employed in education, manufacturing, and management industries and 20 percent are employed in manufacturing industries. There are also significant patterns in gender distribution within these top industries. Note the construction industry, which is almost entirely male, and also the transportation and warehousing industry, are also dominated by male workers. However, there is a larger percentage of female immigrant head of household workers employed in education, health, and social services and finance, insurance, real estate, rental, and leasing industries.

## English Proficiency Among Immigrant Household Heads living in the State of Rhode Island and the U.S.

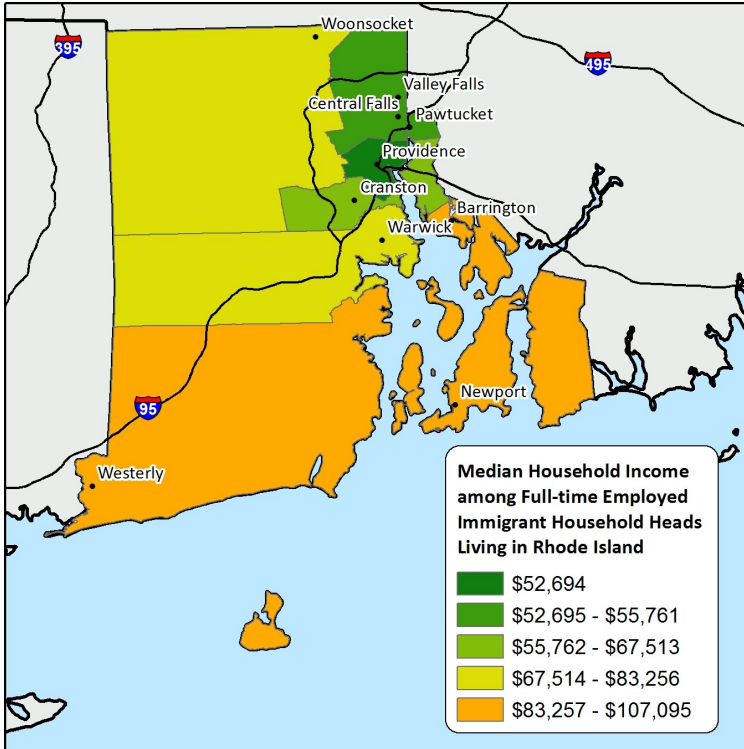


## Top 10 Industries among Employed Immigrant Household Workers by Gender

Industry	Estimated Number of Immigrant Household Heads	Male	Female
Education, Health, and Social Services	10,551	35%	65%
Manufacturing	7,944	65%	35%
Professional, Scientific, Management, Administrative, and Waste Management Services	4,528	60%	40%
Arts, Entertainment, Recreation, Accommodations, and Food Services	4,312	54%	46%
Retail Trade	2,932	71%	29%
Finance, Insurance, Real Estate, Rental, and Leasing	2,126	44%	56%
Other Services	2,051	52%	48%
Construction	1,561	97%	3%
Transportation and Warehousing	1,081	89%	11%
Public Administration	975	74%	26%
All Other Industries	1,573	68%	32%
<b>Estimated Immigrant Population (Age 16+)</b>	<b>39,634</b>	<b>56%</b>	<b>44%</b>

# Immigrants in Rhode Island 2015

## Median Household Income among Full-time Employed Immigrant Household Heads in Rhode Island



The map on the left shows the median household income among full-time employed immigrant household heads in Rhode Island by Public Use Microdata Areas (PUMA). Overall, the median household income for immigrants in Rhode Island is \$63,232 and the median household income for immigrants in the U.S. is \$67,678. Immigrants residing in and around the city of Providence and Pawtucket reported the lowest earned median income. Immigrants living on the coast and in the southern and eastern part of the state reported the highest earned median income.

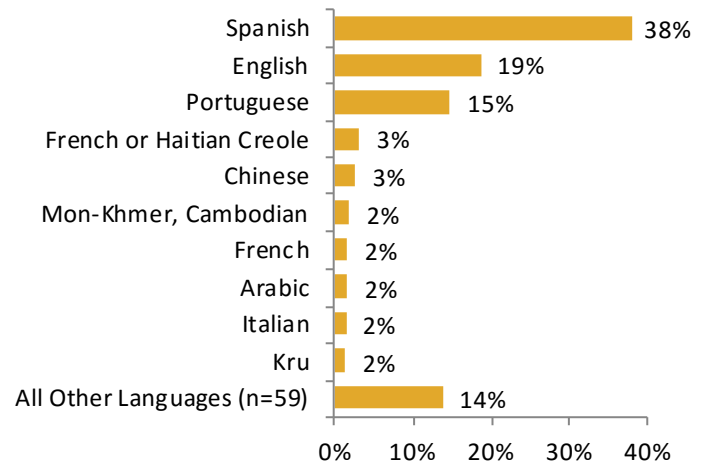
With regard to educational attainment, 75 percent of immigrant household heads in Rhode did not earn a Bachelor's degree. However, 12 percent of immigrant household heads in Rhode Island have a Master's Degree or higher.

The chart on the bottom right shows the top 10 languages spoken at home by immigrant households in Rhode Island. Approximately 38 percent of the immigrant household heads speak Spanish followed by English (19 percent) and Portuguese (15 percent). The remaining 28 percent of immigrants speak 66 different languages.

## Educational Attainment by Immigrant Household Heads (Age 25+) in the State of Rhode Island and the U.S.

Educational Attainment	Immigrants in Rhode Island	Immigrants in the U.S.
No High School Degree	32%	27%
High School Diploma	23%	20%
Some College/Associates Degree	20%	20%
Bachelor's Degree	13%	18%
Graduate, Master's or Professional Degree	9%	12%
Doctoral Degree	3%	3%
<b>Estimated Immigrant Household Population (Age 25+)</b>	<b>58,672</b>	<b>16,457,829</b>

## Top 10 Languages Spoken by Immigrant Household Heads in the State of Rhode Island



### ABOUT THE INSTITUTE FOR IMMIGRATION RESEARCH

The IIR works to refocus the immigration conversation among academics, policy-makers and the public, including the business community and media, by producing and disseminating unbiased and objective, interdisciplinary academic research related to immigrants and immigration to the United States. The Institute for Immigration Research is a joint venture between George Mason University and the Immigrant Learning Center, Inc. (ILC) of Massachusetts. To learn more about the Institute for Immigration Research call (703) 993-5833, email [iir@gmu.edu](mailto:iir@gmu.edu), or visit us online [iir.gmu.edu](http://iir.gmu.edu).

### IMMIGRATION DATA ON DEMAND (iDod)

**iDod**  
Immigration  
Data on Demand

The iDod service is offered free of charge to help individuals and institutions examine the immigrant populations of their particular geography. Recipients of this data will see how immigrants provide vital contributions to the economy and society of the U.S. Ultimately, the goal of the iDod project is to create collaborations and connect people with data of interest on immigrant populations from their particular geographic region or economic sector.