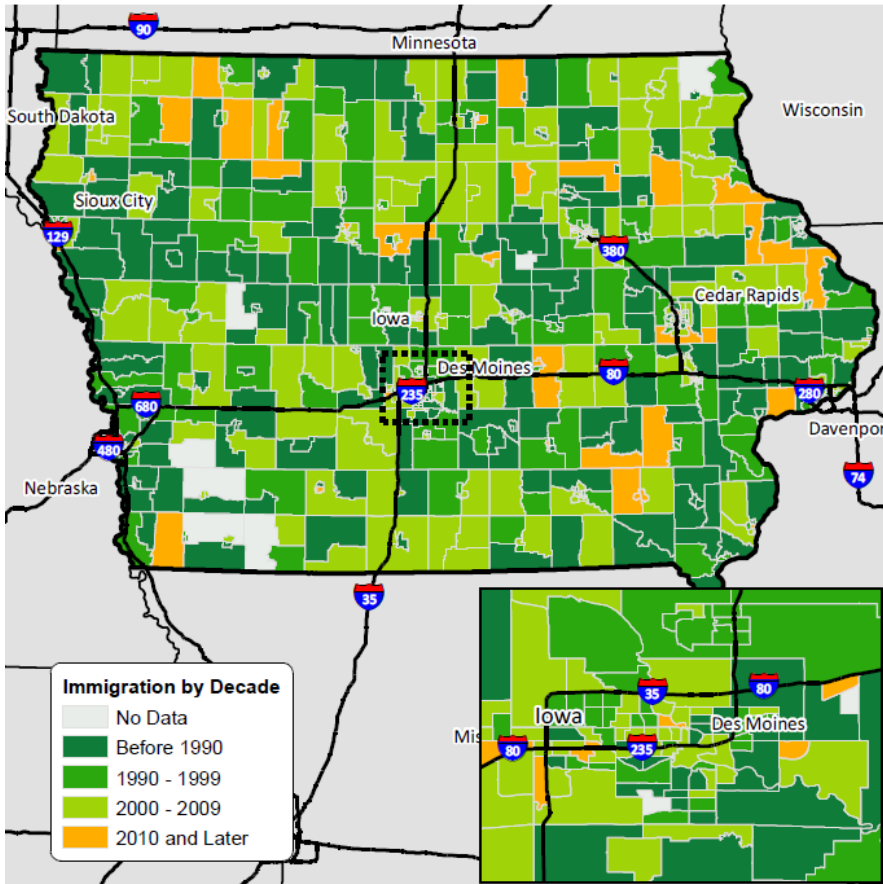


Immigrants in Iowa 2010-2014

iDod: Fact Sheets with Data on Immigrants, Customized For You, For Free.

Year of Immigration among Immigrants in Iowa by decades using Census Tracts



The map on the left presents the most common year of entry by decade among immigrants in Iowa. Dark shades of green indicate that immigrants entered the United States before the 1990s. Yellow shades indicate that immigrants entered the United States during or after 2010. Most Census tracts are shaded from dark green to light green with scattered yellow shadings throughout the state of Iowa.

According to the chart below, there are 1,451 estimated immigrant head of households that work in the agriculture sector. Roughly 70% of the estimated immigrant heads of households work as miscellaneous agricultural workers including animal breeders.

Of the top 10 languages spoken by immigrants in Iowa, 36% speak Spanish. The top 10 languages were spoken by roughly 80% of the immigrants while the other 73 languages were spoken by only 20%, indicating a relatively low diversity of languages.

Agriculture Occupations among head of households in Iowa

Occupations within Agriculture related Industries among employed head of households in Iowa	Percent
Miscellaneous Agricultural Workers Including Animal Breeders	70%
Farmers, Ranchers, and Other Agricultural Managers	12%
Laborers and Freight, Stock, and Material Movers	4%
Graders and Sorters, Agricultural Products	4%
Miscellaneous Production Workers Including Semiconductor Processors and Cooling and Freezing Equipment Operators and Tenders	3%
All Other Occupations	7%
Estimated Immigrant Households (Age 16+)	1,451

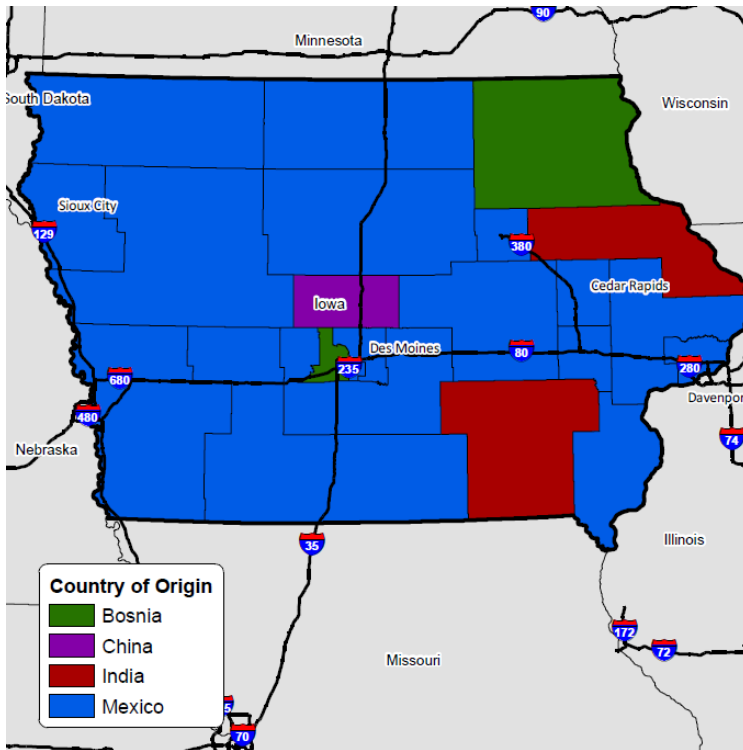
Top Ten Languages Spoken among Immigrants in Iowa

Top 10 Languages Spoken	Percent
Spanish	36%
English	19%
Chinese	5%
Serbo-Croatian, Yugoslavian, Slavonian	5%
Vietnamese	4%
Arabic	3%
Hindi	2%
German	2%
Laotian	2%
Filipino, Tagalog	2%
All other languages (n=73)	20%
Estimated Immigrant Population (age 5+)	143,917

Source: U.S. Census Bureau. American Community Survey, 2010-2014. ipums.org extracts. Tigerline shapefiles.

Immigrants in Iowa 2010-2014

Most Common Country of Origin among Immigrants in Iowa using the puma data



The map on the left shows the common county of origin among immigrants in Iowa. Mexico is the most common country of origin in Iowa. There are large communities of Chinese and Bosnian immigrants located near Des Moines, meanwhile near Cedar Rapids, there are larger immigrant populations from India and also Bosnia.

The chart on the bottom left presents the most common agriculture related Industries in Iowa. Animal production and aquaculture was the most common industry worked by immigrant householders. Out of the 1,451 estimated immigrant householders, 25% worked in crop production while 3% worked in Logging industry in Iowa.

Of the estimated 145,368 immigrants in Iowa, 29% of the immigrant population was born in Mexico.

Agriculture related Industries among head of households in Iowa

Industries within Agriculture related occupations among employed head of households in Iowa	Percent
Animal production and aquaculture	69%
Crop production	25%
Logging	3%
Support activities for agriculture and forestry	3%
Estimated Immigrant Households (Age 16+)	1,451

Top Ten Countries of Origin among Immigrants in Iowa

Top 10 Countries of Origin	Percent
Mexico	29%
India	8%
China	5%
Bosnia	5%
Vietnam	5%
Korea	3%
Guatemala	3%
Canada	3%
Germany	3%
Laos	2%
All other countries (n=130)	33%
Estimated Immigrant Population	145,368

ABOUT THE INSTITUTE FOR IMMIGRATION RESEARCH

IIR works to refocus the immigration conversation among academics, policy-makers and the public, including the business community and media, by producing and disseminating unbiased and objective, interdisciplinary academic research related to immigrants and immigration to the United States. The Institute for Immigration Research is a joint venture between George Mason University and the Immigrant Learning Center, Inc. (ILC) of Massachusetts.