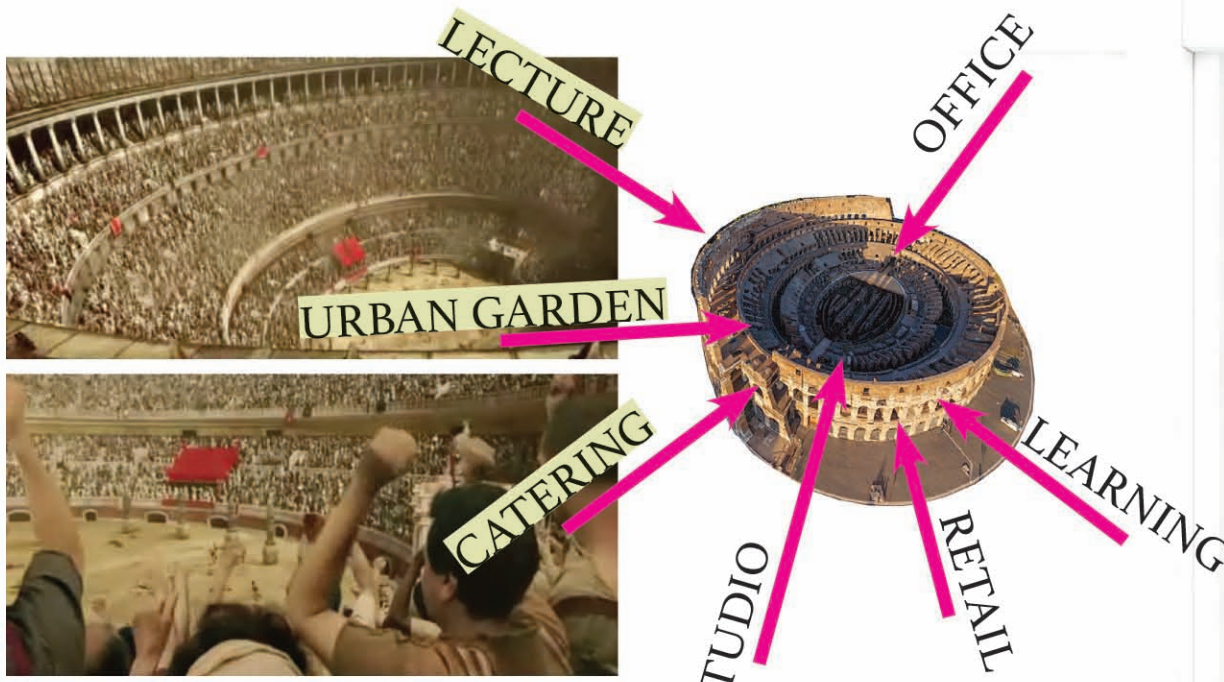


1. DESIGN CONCEPT

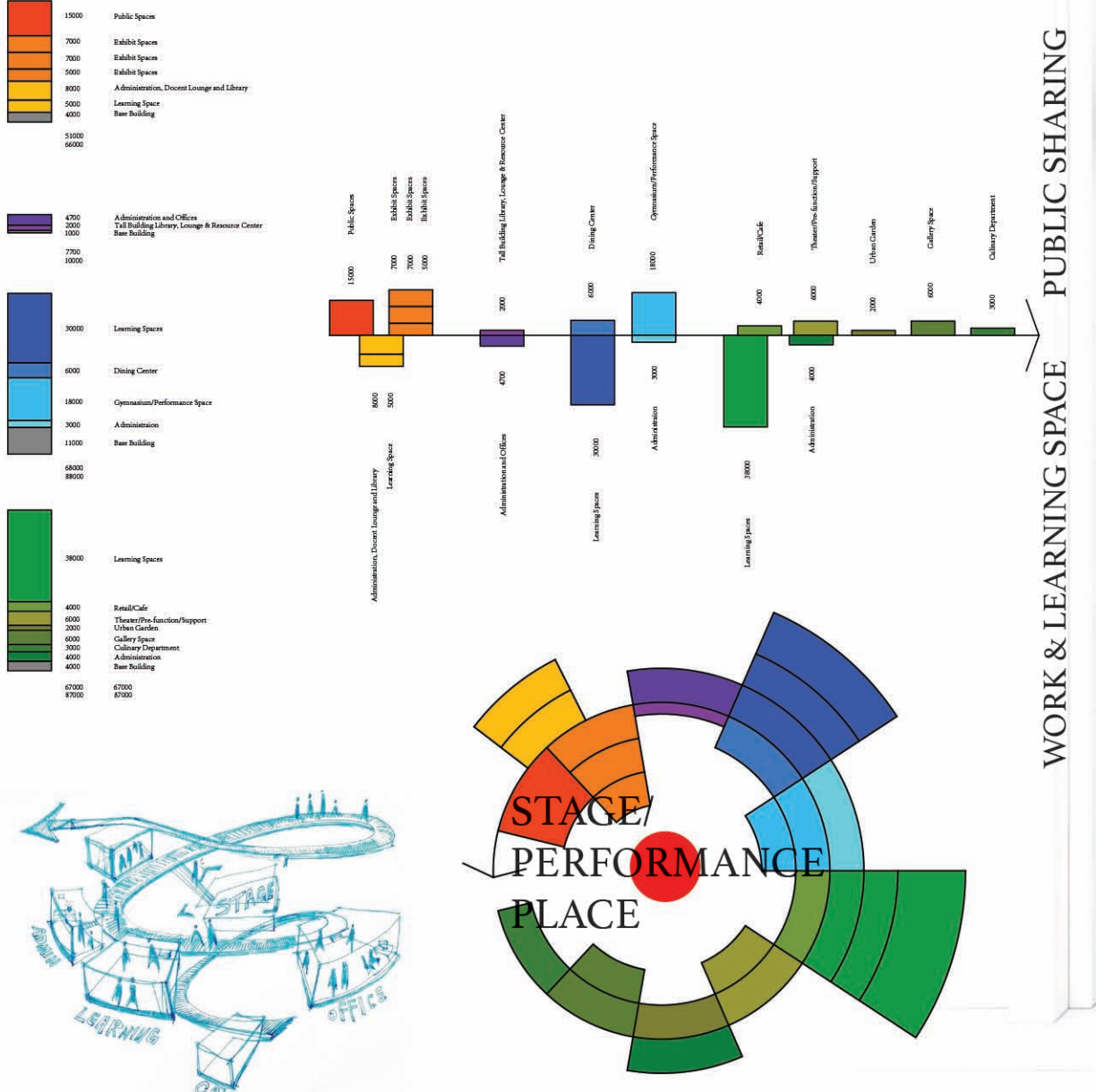
PUBLIC MULTI-FUNCTIONAL AUDITORIUM

In approaching the design for the new multiple function building (CAF + CTBUH + ARTS HIGH SCHOOL + OUT-OF SCHOOL TIME YOUTH PROGRAM), we found great inspiration in the Roman colosseum, Auditorium around a STAGE. It's a great place to display. What if we insert every working or study functional area into this auditorium, then we can work or study around a performance stage. We get a public multi-functional auditorium.

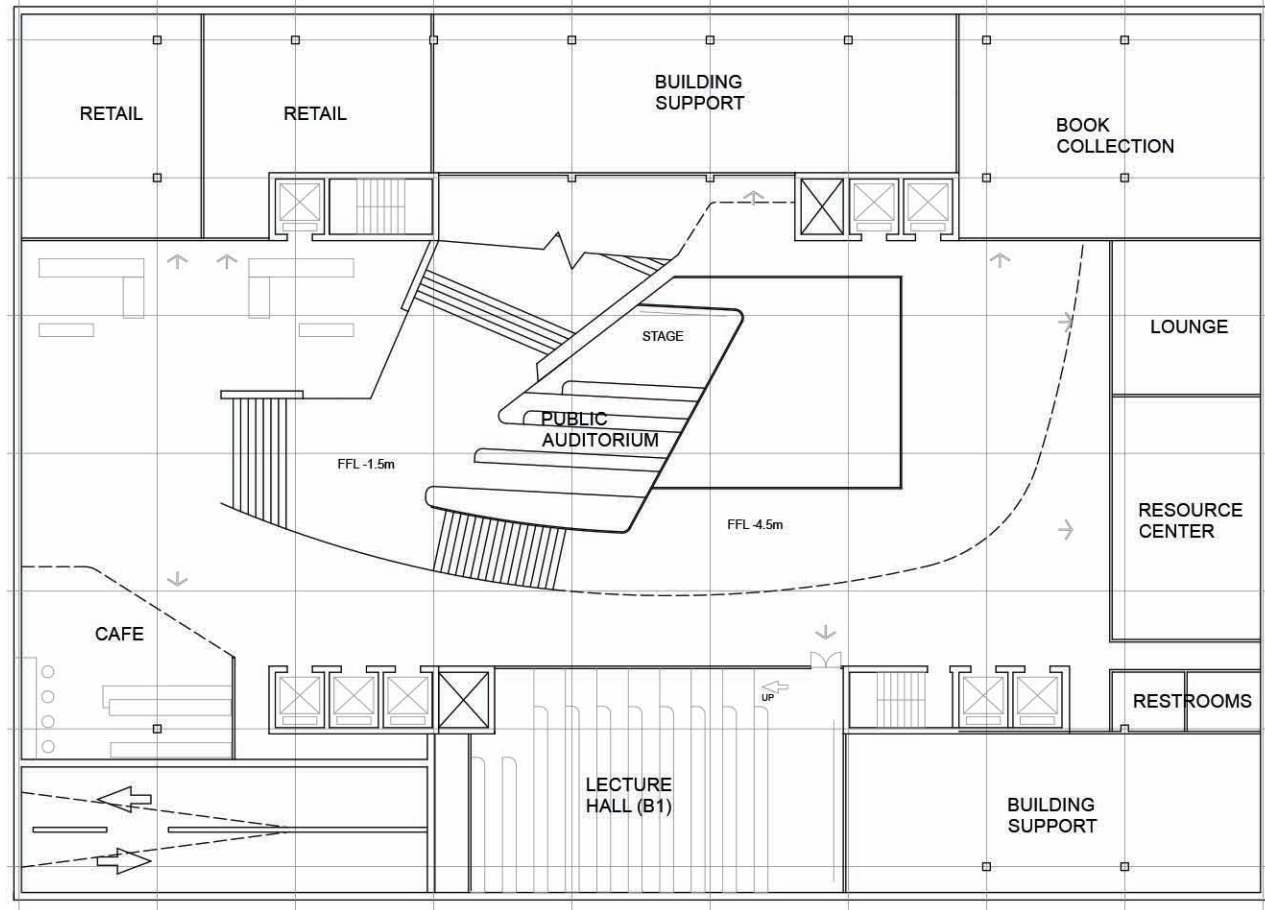


2. LEARNING ENVIROMENT

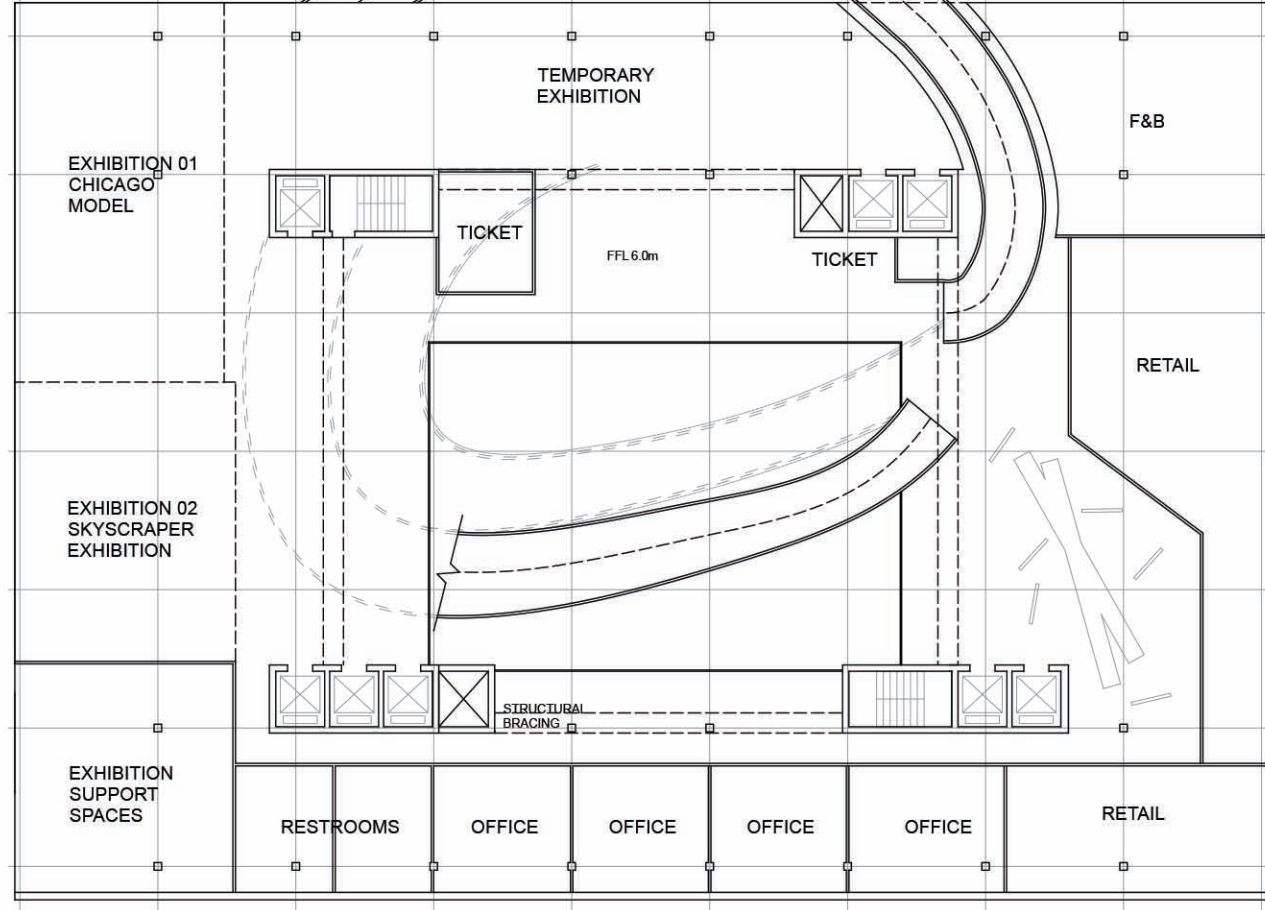
This building advocate an architectural model which can support the new education system. As we concerned, the key point to the new educational method is to display and share. Display easily and share everything. We organized all of the functions into two parts. One called PUBLIC SHARING, the other one called WORK & LEARNING SPACE.



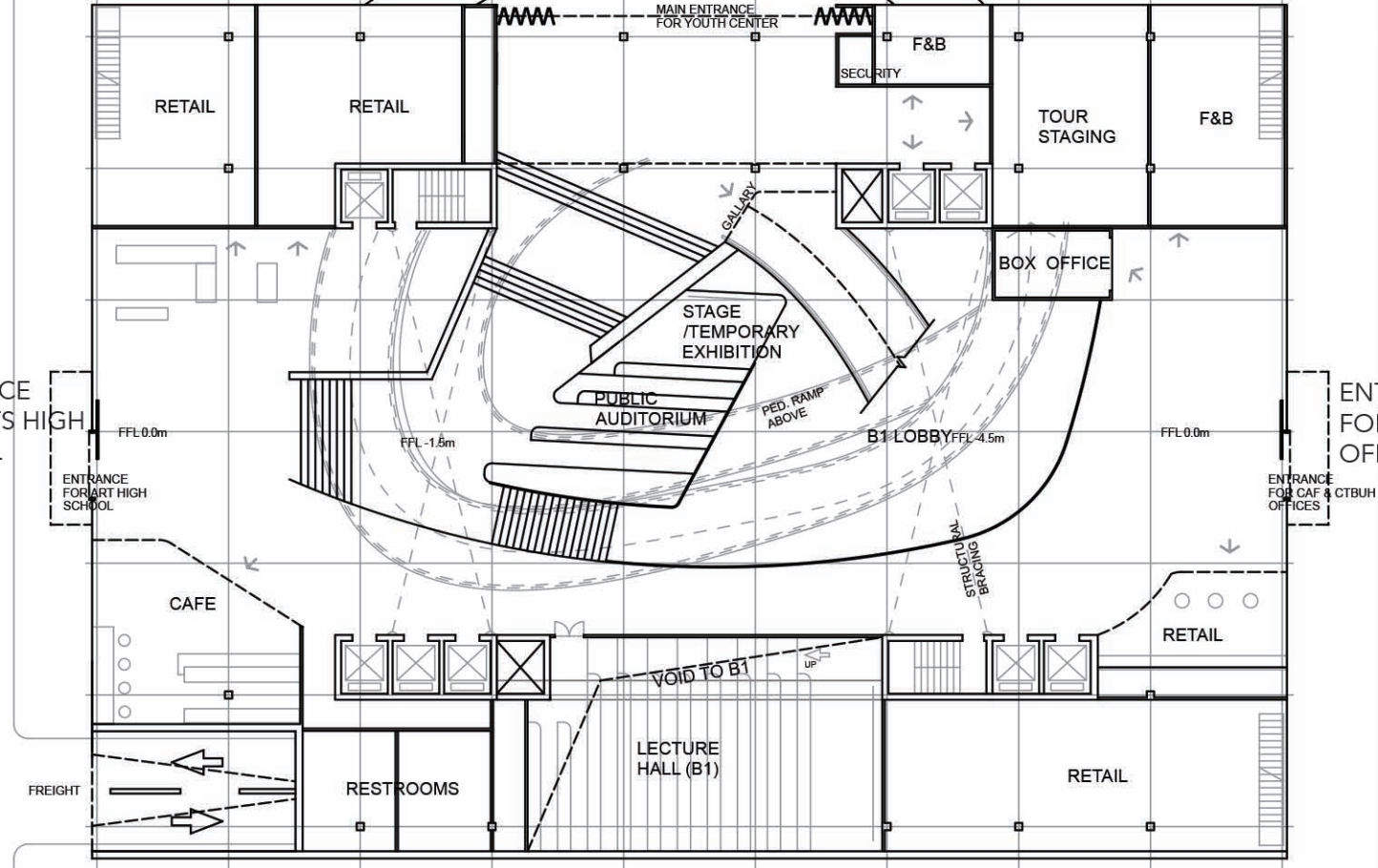
BASEMENT LEVEL 1



THE FIRST FLOOR



THE GROUND FLOOR



3. VALUE

Practical company share some experience with students, while students share new concept and idea with their team member, teacher and practical company. So we want to set a STAGE or a PERFORMANCE PLACE right in the center of EVERY public space, throughout the whole building. Such a place could help everyone to display their idea, right in the minute they get a wonderful idea. Then use continuous ramps, stairs and elevators connect them together.

