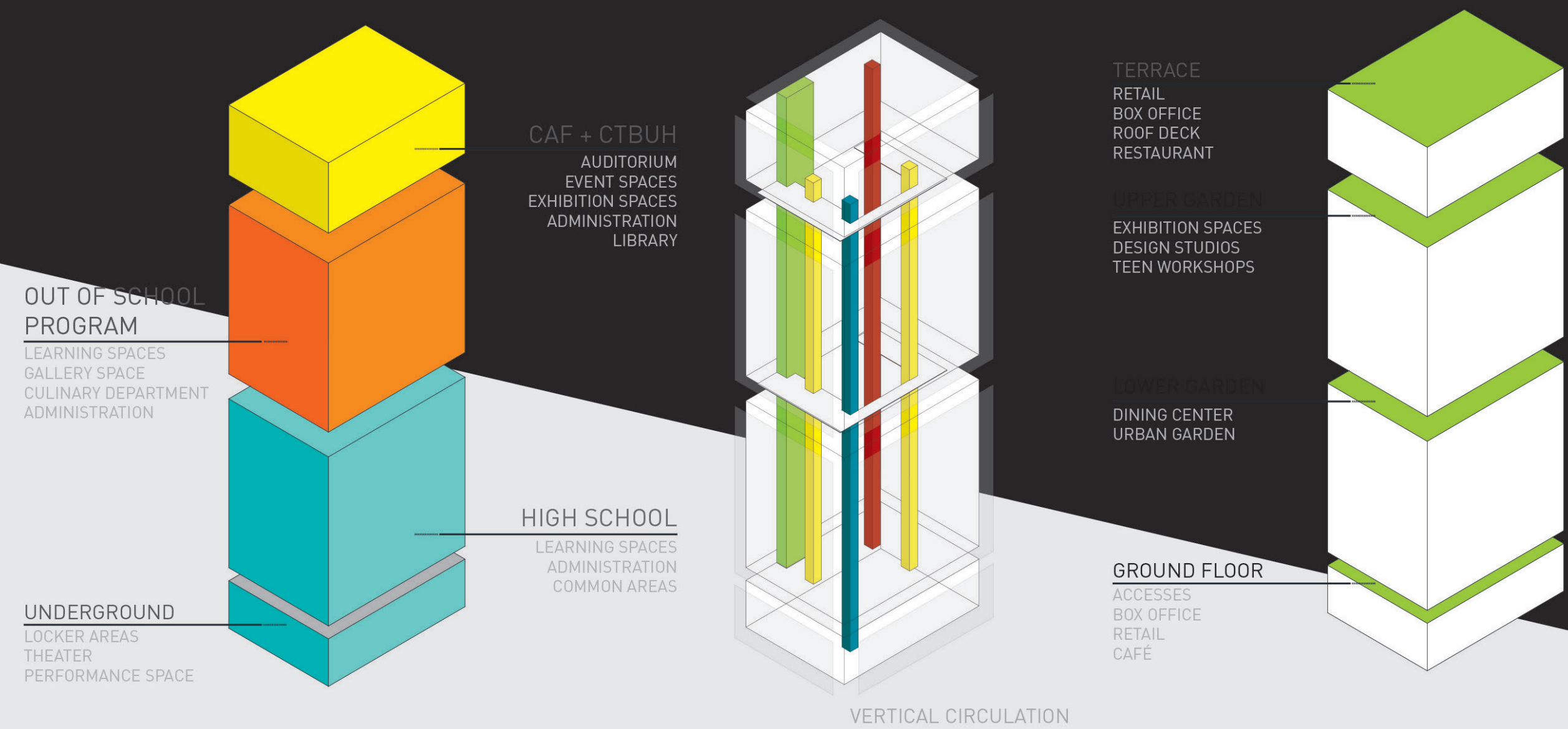


# BUILDING FOR PEOPLE

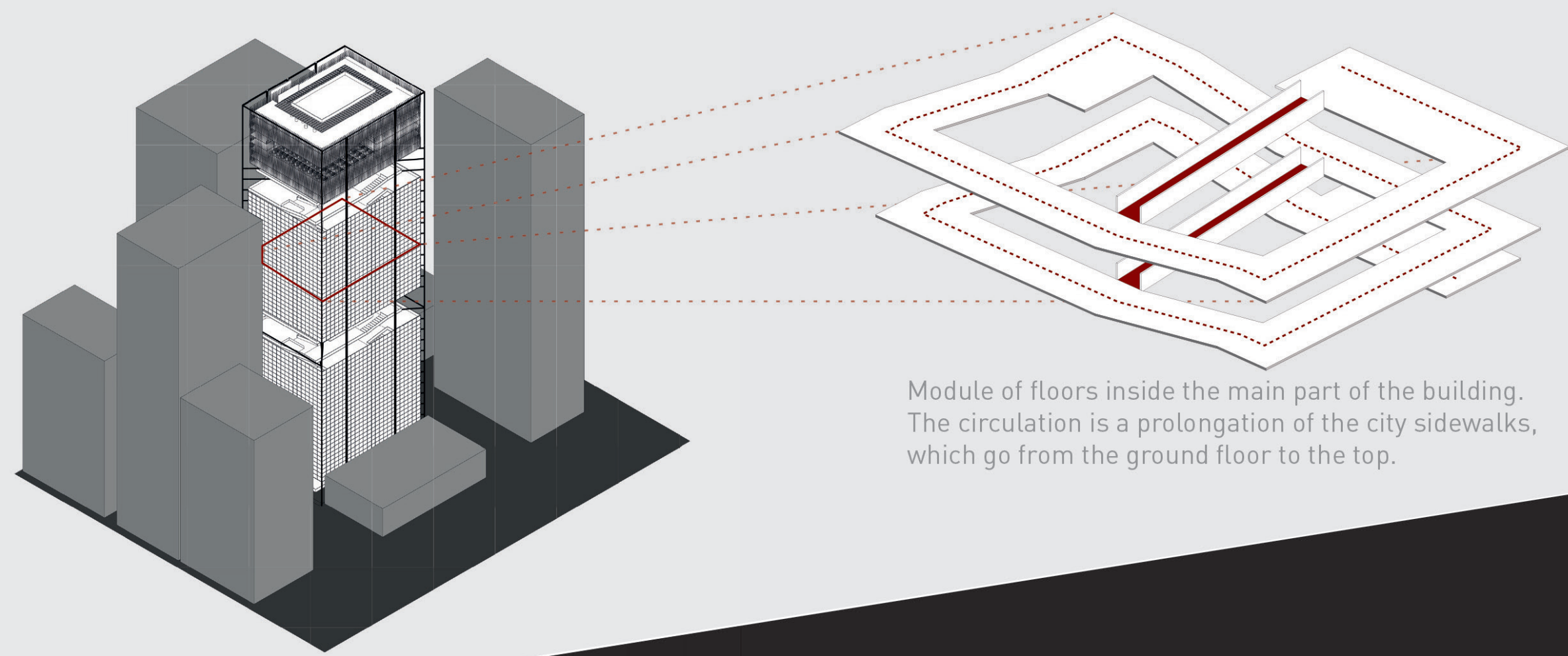


The design concept started from discussions about how the buildings are felt and seen in our cities. The majority of people perceive the vertical buildings as something that is not part of the urban mesh or out of their reach. We, architects aspirants, want to show how an architect's institutional building can be open to the city and reflect its rights for everybody.

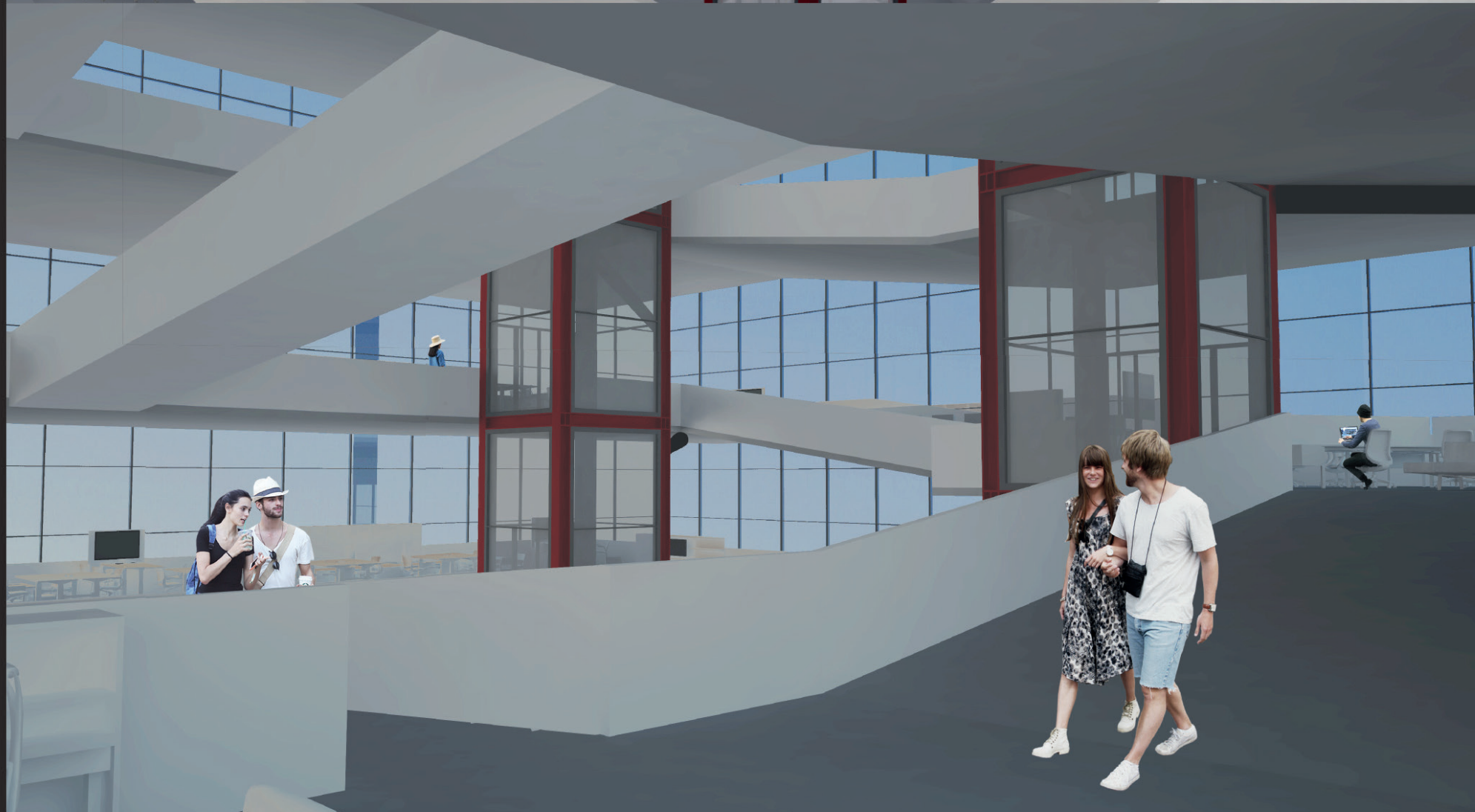
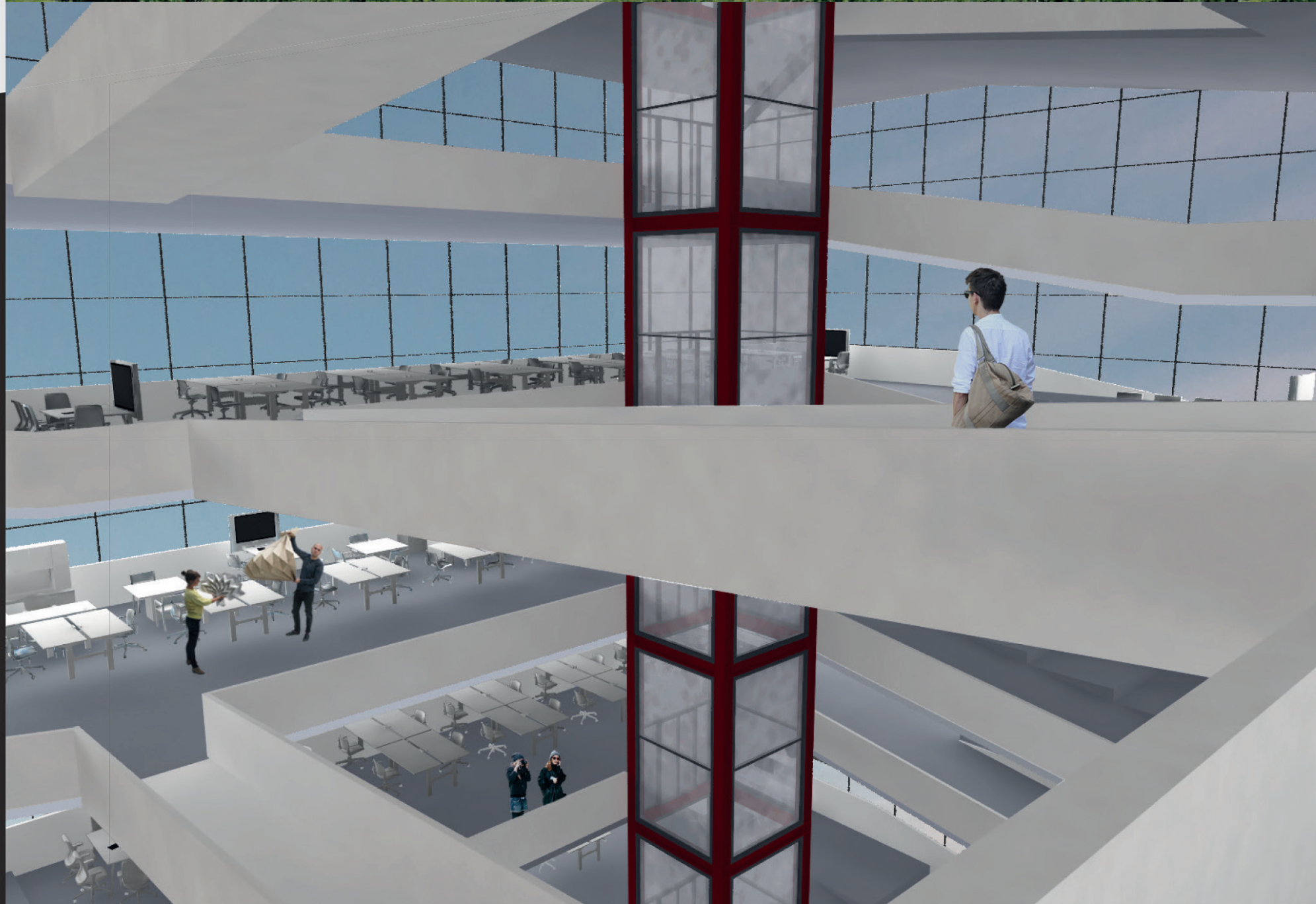
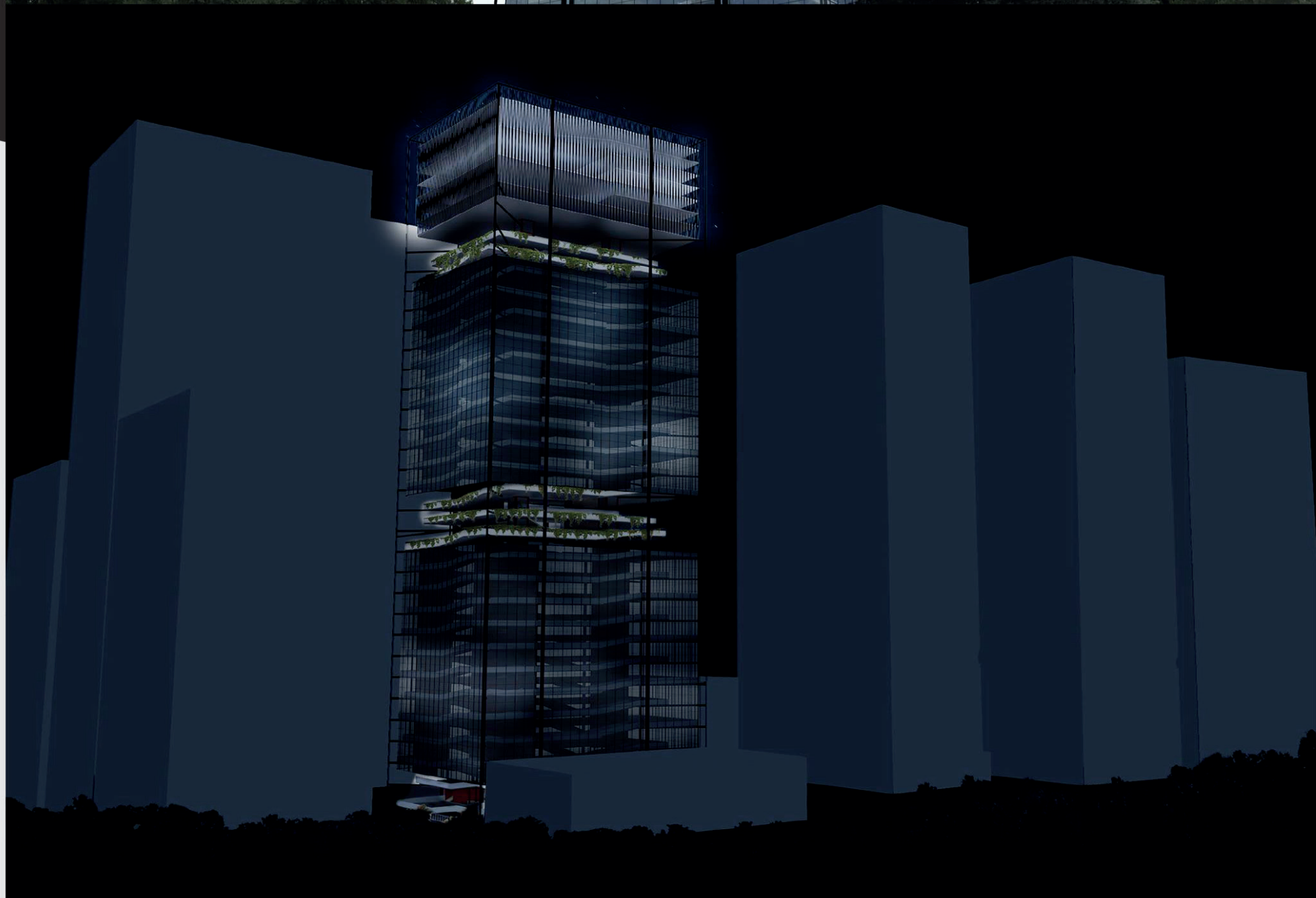
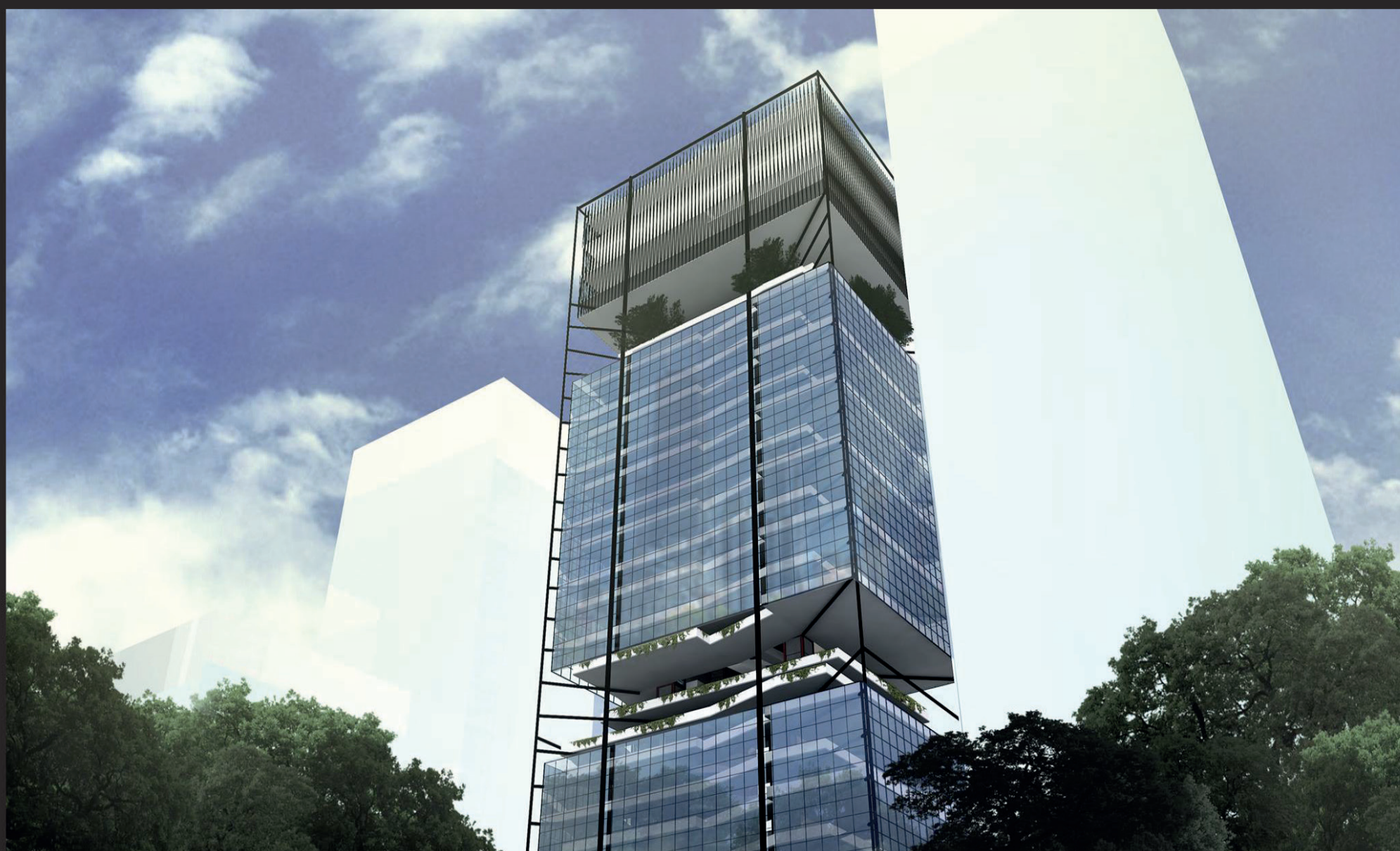
A connection flow was created between four public squares in the design. One is on the ground floor; two are at the middle and the last one on the top. The tourists and citizens are invited to start their visit right from the top, enjoying the galleries and common spaces with the view of Chicago.

The accessibility meets the equality through the rest of the building. The schools become places where students and visitors have the chance to walk freely, using ramps which connect all the floors. This experience creates dynamic visuals and different kind of spaces. These spaces create interaction between users. They will enjoy a diverse learning space that can be an example for the architecture field, optimizing the creative process and encouraging the interaction and research of built spaces for artistic knowledge.

The form matches the city of Chicago contemporary architecture, not only in the proportion, but drawing attention to the basic aspects of architecture, such as structure, facades, circulations and accesses.



Module of floors inside the main part of the building. The circulation is a prolongation of the city sidewalks, which go from the ground floor to the top.



Exterior view from pedestrian high  
Night view of the building  
Daylight view of the building  
School interior view  
School interior view  
Roof deck view