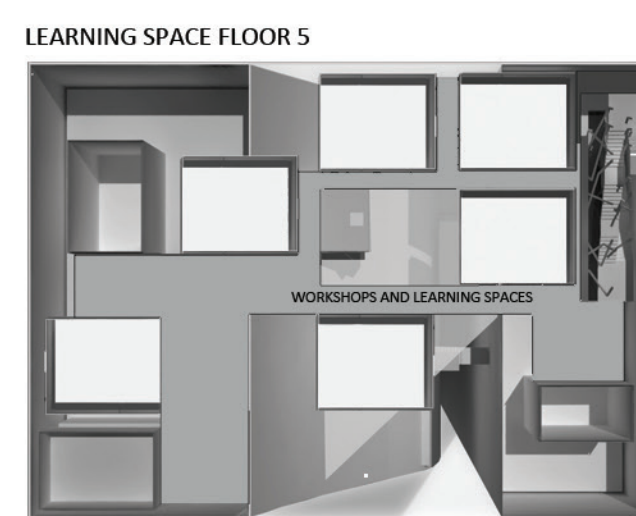
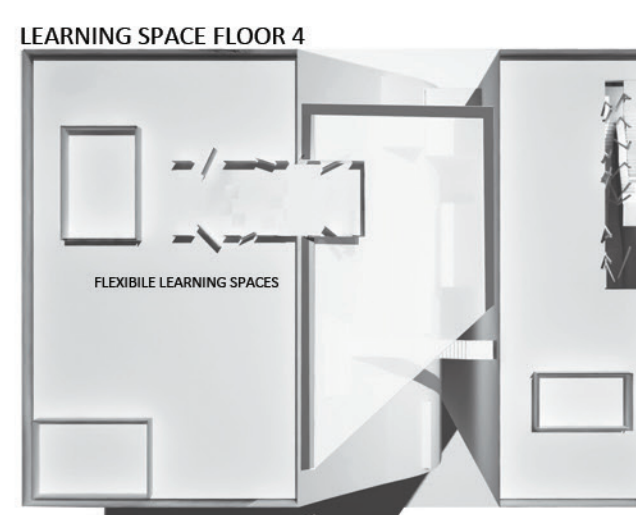
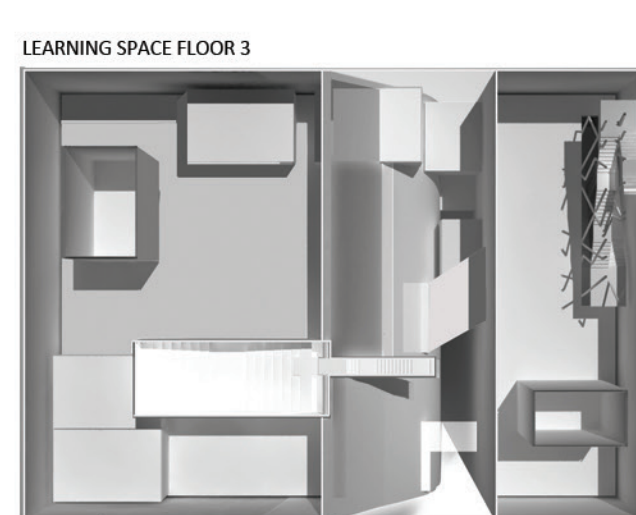
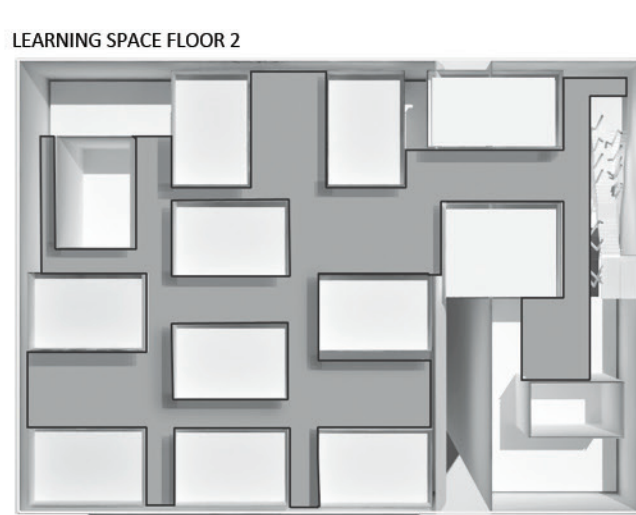
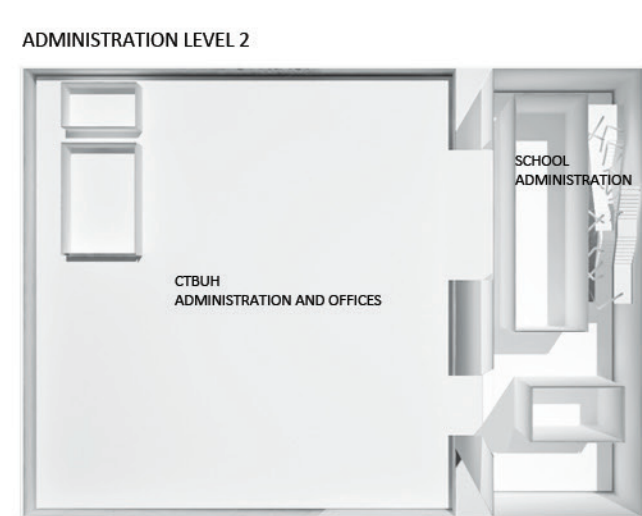
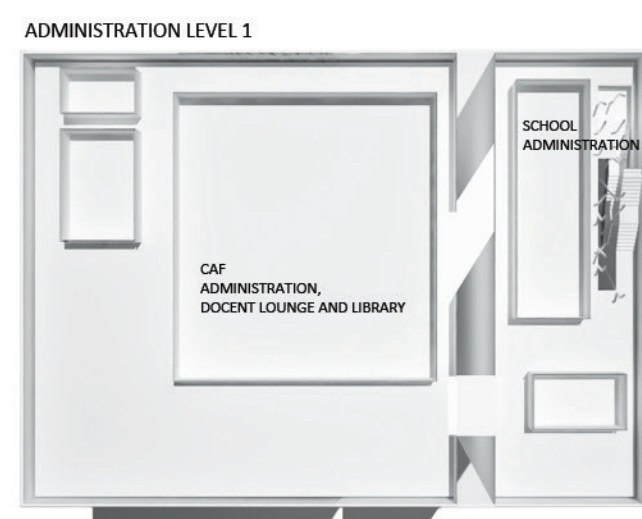
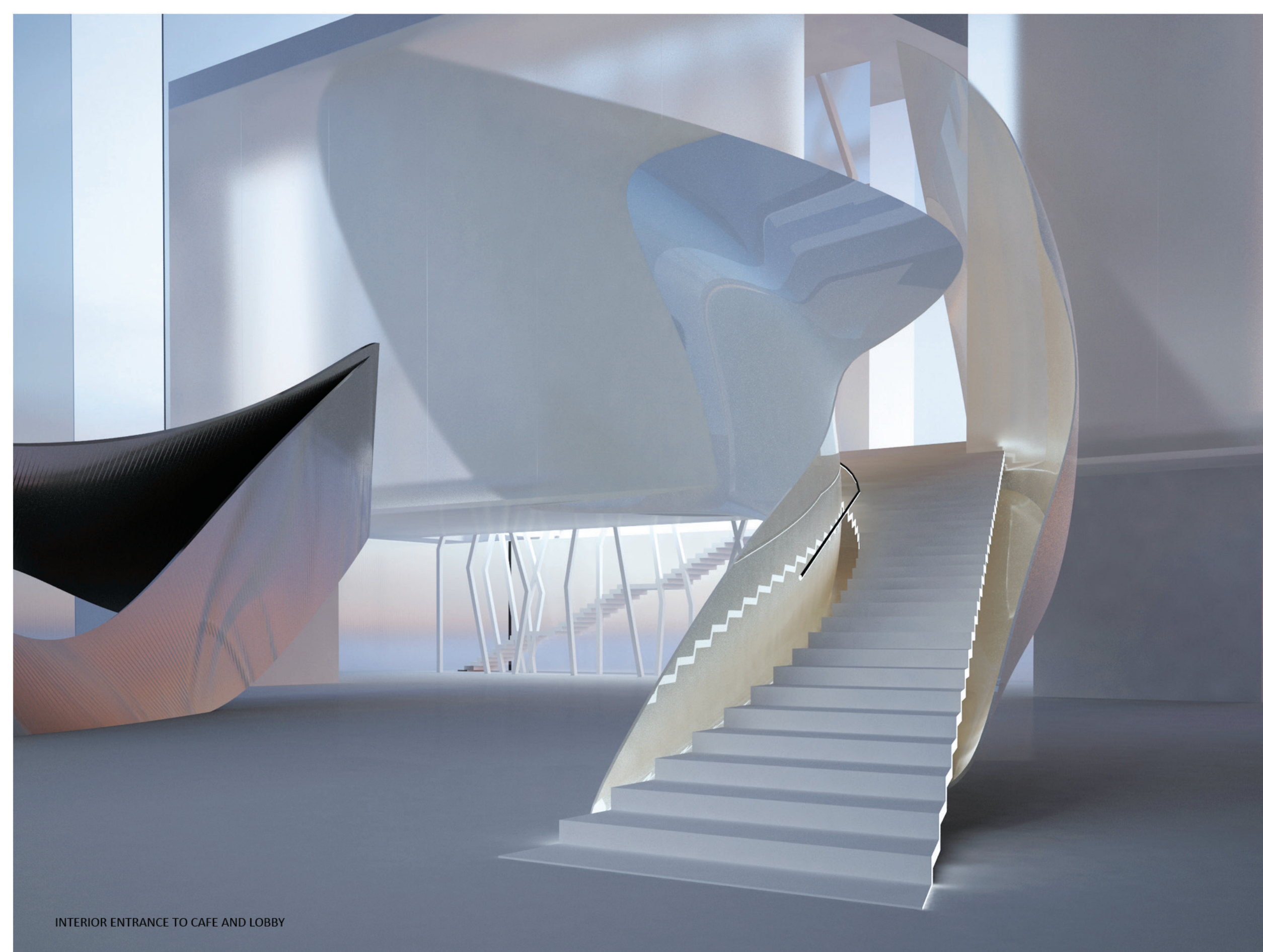
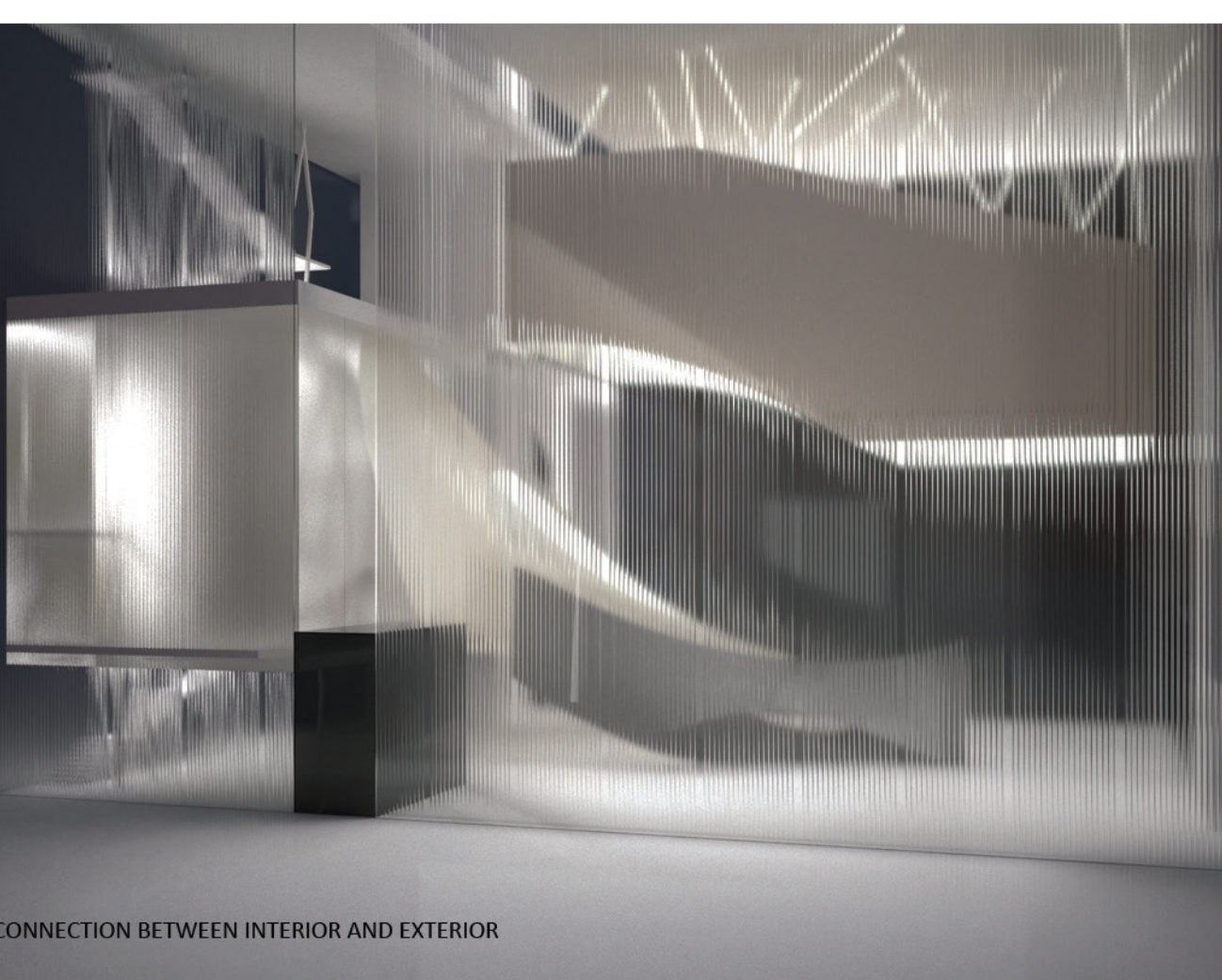
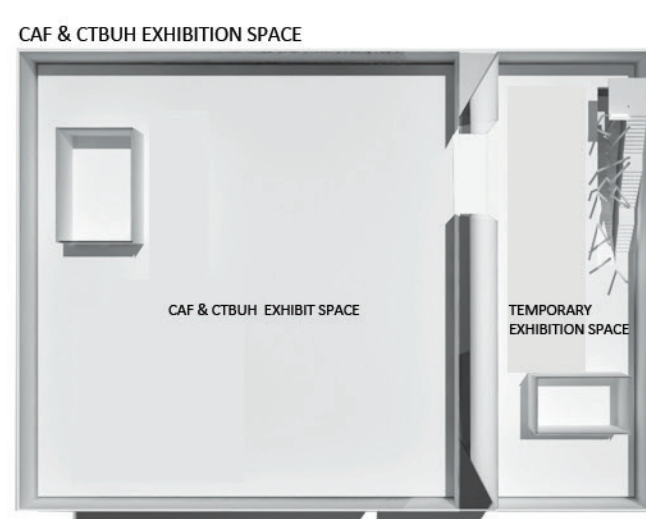
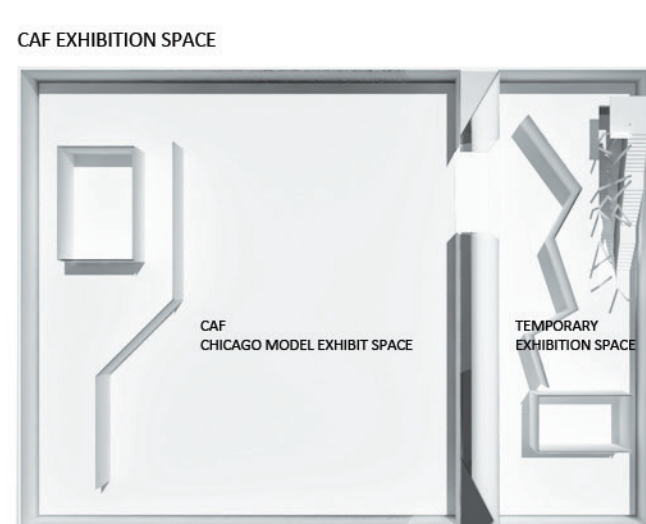
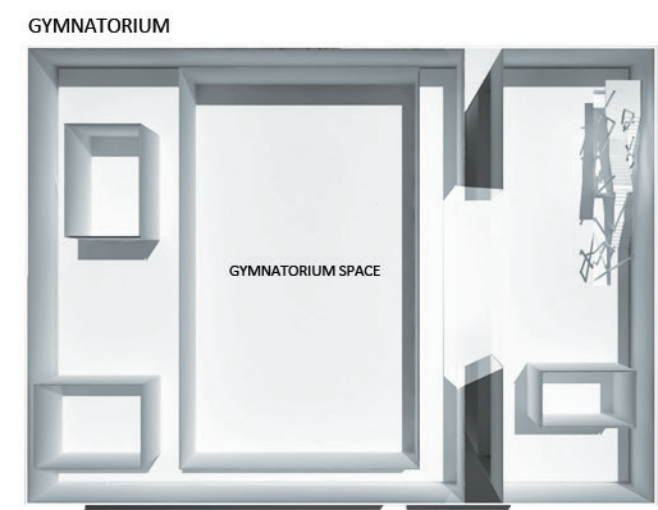
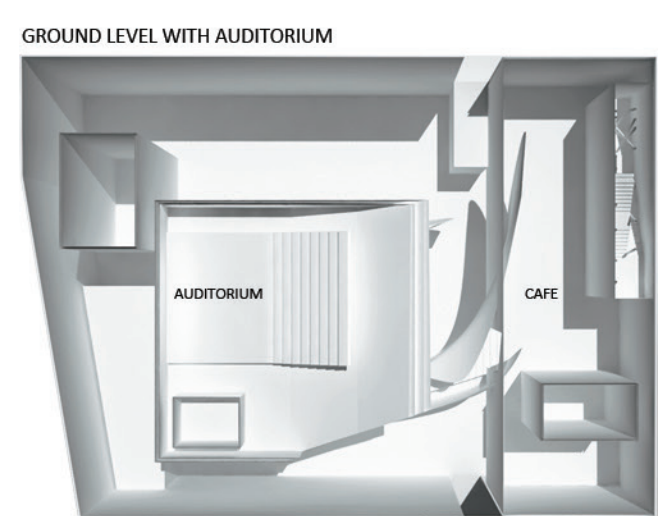


CADE – GROWING SEED

The inspiration of the Center for Architecture, Design and Education (CADE) is found in a simple unit -- the seed. Development is essential to a seed and how it interacts with the changing environment. This building represents a place to cultivate new concepts, stimulate learning, and create something within a changing environment.

The ground level welcomes visitors with a semi-open square that serves the public with on-site tours and a cafe. The extension of that square is presented as a vertical opening and is developed by cutting through the basic building shape. This design forms a growing element from the base to the roof which serves as a space to accommodate activities such as learning, education, exhibitions, workshops, and out of school activities.

From a larger distance this space creates a dynamic flexible image on the facade. The image of the building is visible and recognized from a greater distance and represents another city landmark. Since the vertical opening is from a west to east orientation, the building is filled with natural light and adds another large vertical element to the city representing optimism, courage and opportunity.



THE VERTICAL IN BETWEEN SPACE THAT JOINS THE LEFT AND RIGHT PARTS OF THE BUILDING SERVES AS A LEARNING SPACE FOR THE OUT-OF SCHOOL TIME YOUTH PROGRAMS. THIS SPACE IS ALSO USED FOR DYNAMIC ACTIVITIES SUCH AS WORKSHOPS, EXHIBITS, AND DINING.

