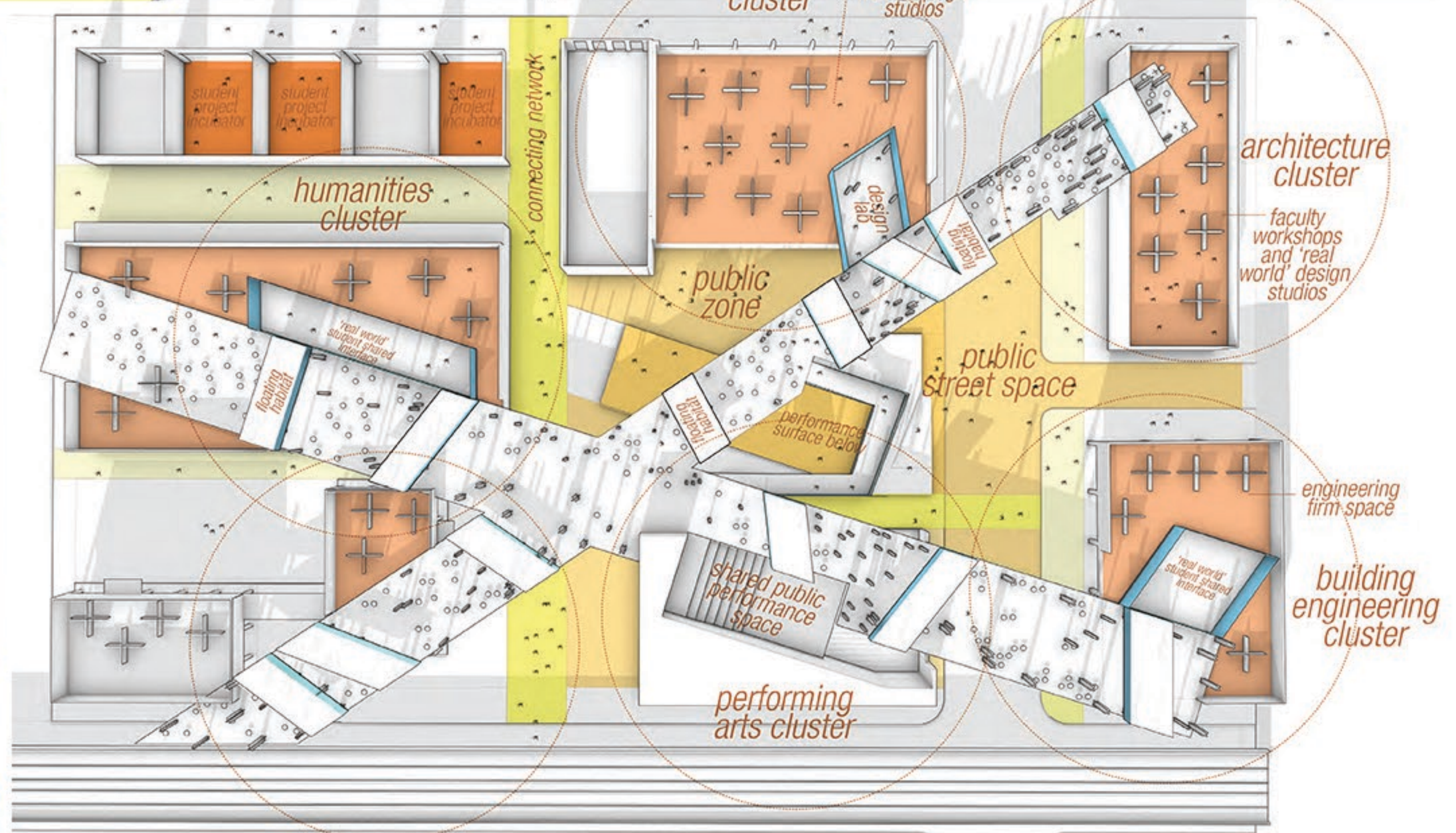
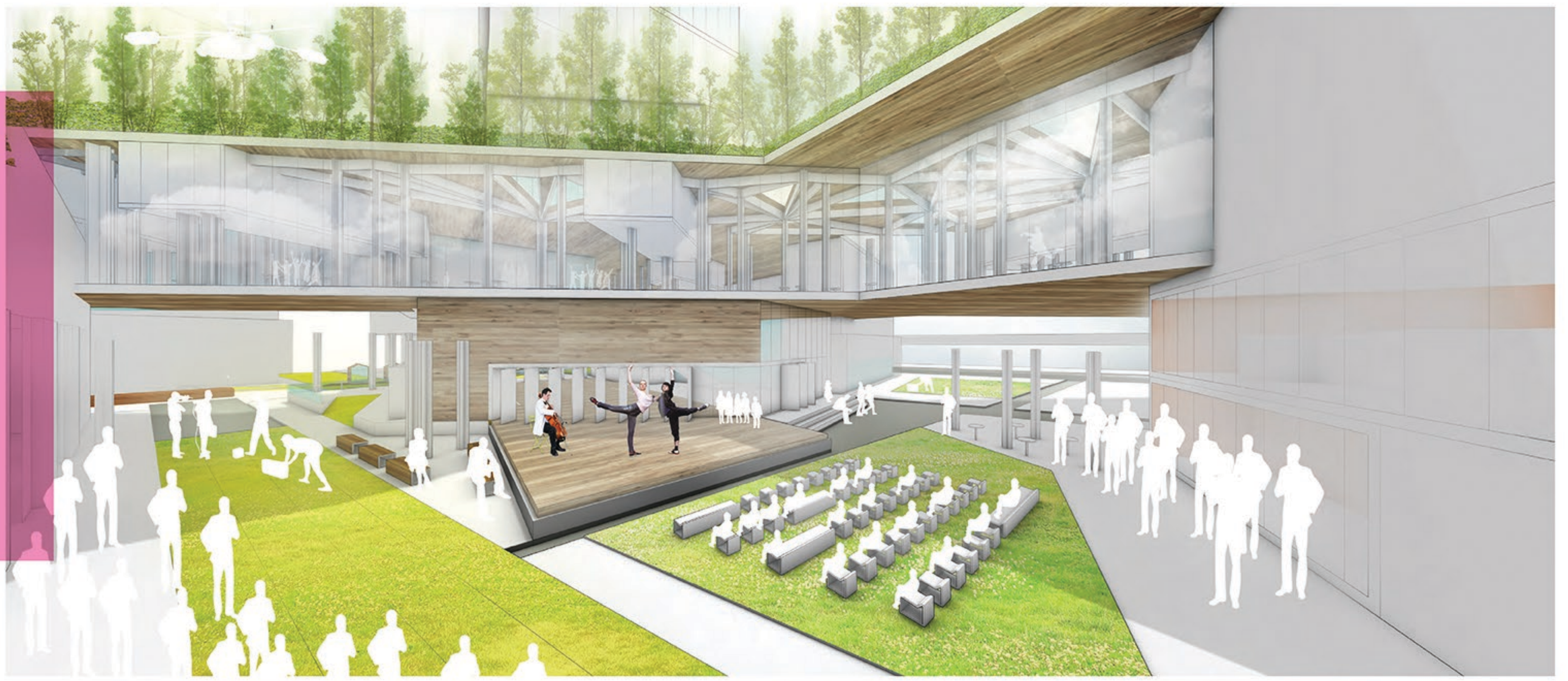


constant contact

center for architecture
design and education

+

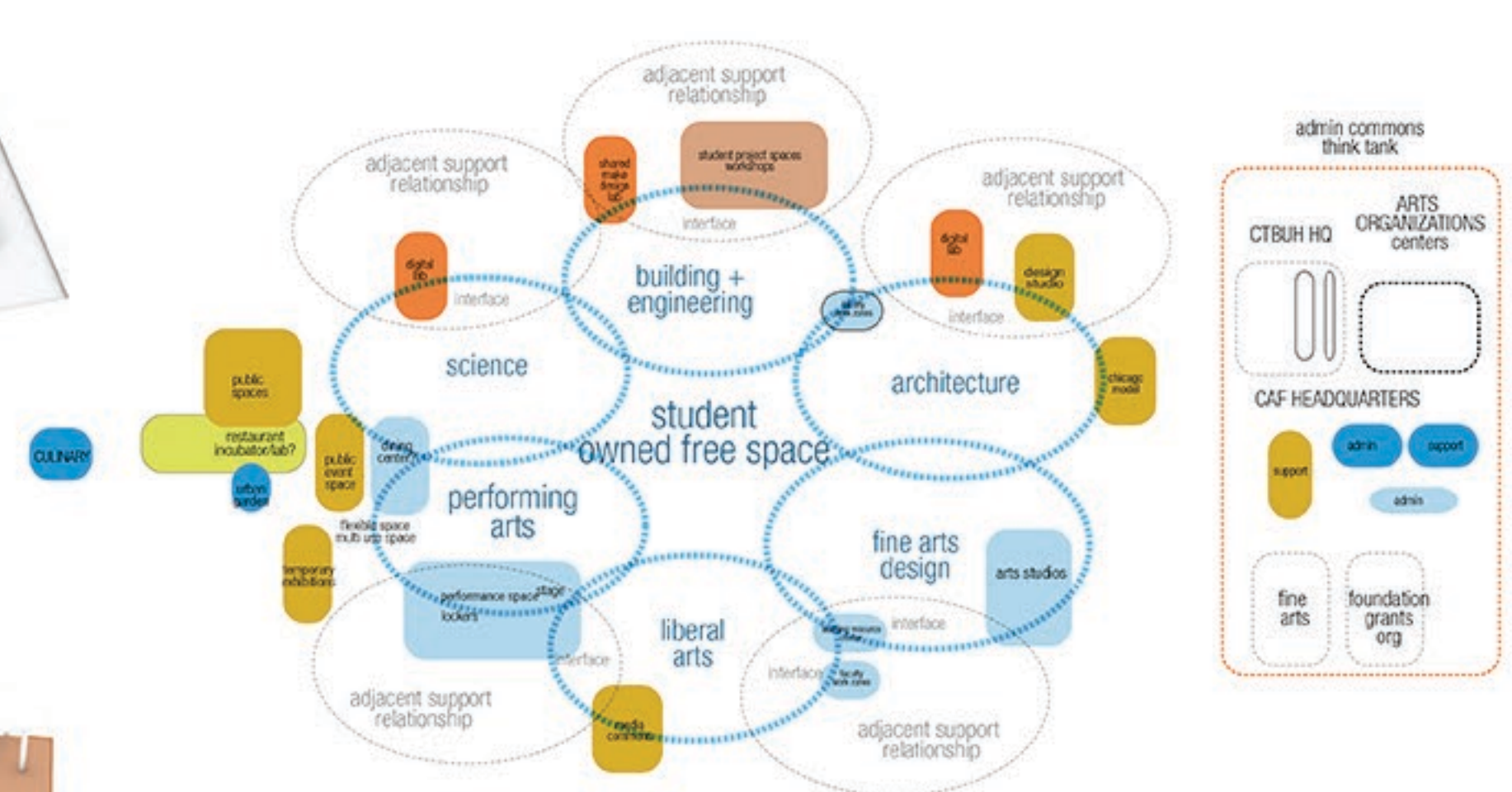


Situated in downtown Chicago, the Center for Architecture Design and Education is poised to reconfigure the relationships between the city, school, and local culture. In doing so, the traditional Chicago high-rise morphs into a connected network of school, residence, performance surfaces, and professional organizations.

The school performs as an infrastructural apparatus, suspended over the city block and connected to the CAF, CTBUH and local cultural organizations. Here, a "free space" is formed which allows students of the Allied Arts and Design school to experiment, construct and learn through play. The students are allowed, and encouraged to shape their own environment for learning and development. This network is stretched in such a way that it interfaces with a multitude of entities in the city allowing for mentorship, teaching, and advanced resource sharing. A particular cluster in the school may interface with a design firm, think tank, or tech start up that is active in the fabric of Chicago. As the fabric changes, so does the exposure of students in the school to the outside world. The context is always in flux, and in constant contact with the learning environment.

Below the network of free space and experimentation, the CADE interfaces with the ground plane, and can begin to shape its urban community with a spill of program and events. The entire ground floor can open up to become a spectacular display of student ideas and expression, whether through design exhibition, urban gardening, or a game of basketball on the performance surface.

Above the ground plane, and yet again above the "free space" of the school, a tower is proposed. In relation to the surrounding development of the city the tower works to fully integrate the school and institutions into a performative community. Affordable housing is deployed with an agenda to house students and young professionals from neighboring cultural institutions such as the Art Institute of Chicago. A mix of housing units and studio spaces fosters collaboration and mentorship with the school below, while providing space within the city and near cultural centers for a young creative class to grow. The tower also acts as a viewfinder which hosts vantage points/display areas for the CAF and CTBUH interested in curating the understanding of the city.



housing as part of urban block development