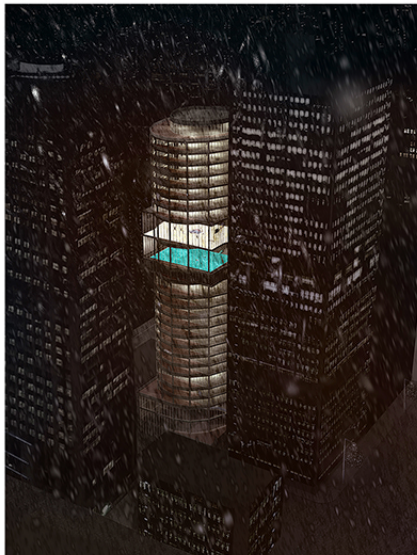


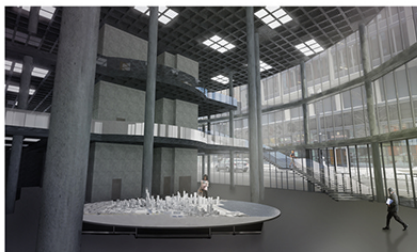
ROOF DECK

Four season event spaces that offer a demonstration of sustainable green roofs as well as vistas of the Chicago city skyline and Lake Michigan beyond.



VIEW FROM THE SOUTHEAST

Four season indoor activities are available to the users and their families.



LOBBY

Three gallery and exhibition spaces for the Chicago Architecture Foundation Temporary Exhibitions, the Chicago Architecture Foundation & the Council on Tall Buildings and Urban Habitat Skyscraper Exhibit and the Out-of-School Time Youth Programs Gallery cascade up along the elliptical stair path and overlook the event space featuring the model of Chicago.

CADE for ChiDesign

Design Concept

The design for CAPE begins with a strong notion about the floor plan that conforms to the sun's path of travel throughout the year. It is then extended upward, slightly and constantly altered as dictated by the function within. A living learning environment is composed with sustainable materials used in an elemental and organic fashion. The elegant formal whole is enclaved within an obvious glazing system foregoing a traditional curtain wall system. Mechanical, electrical and low voltage systems are exposed when possible. The building is configured into distinct communities with corresponding identities and differing levels of security for the major programming functions of the center.

Council on Tall Buildings and Urban Habitat
Administration Offices, Lounge, Library and Resource Center
Urban Garden

Chicago Architecture Foundation
Learning Spaces: design studios and Teen Workshops
Urban Garden

Learning Environment

The arrangement of interior spaces in relation to the envelope design and urban environment beyond maximizes both natural daylighting and distant views, proven to enhance the learning experience hewing to the precepts of Evidence Based Design. Larger public assembly spaces are grouped within a transitional zone for optimized sharing between the High School and the Youth Program and set up further sharing between the two larger functions.

Value

CADE will serve Chicago as a showcase for innovations in technological, community and connected learning environments as well as urban gardening and sustainability.

1

2

3

Chicago Architecture Foundation and Council on Tall Buildings and Urban Habitat Skyscraper Exhibit

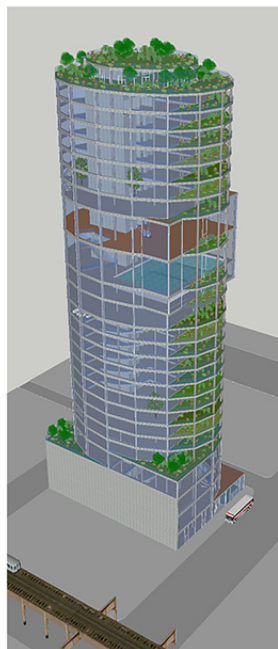
Out-of-School Time Youth Programs Retail Cafe

Chicago Architecture Foundation Retail, Box Office, Tour Staging, Event Space, Chicago Model

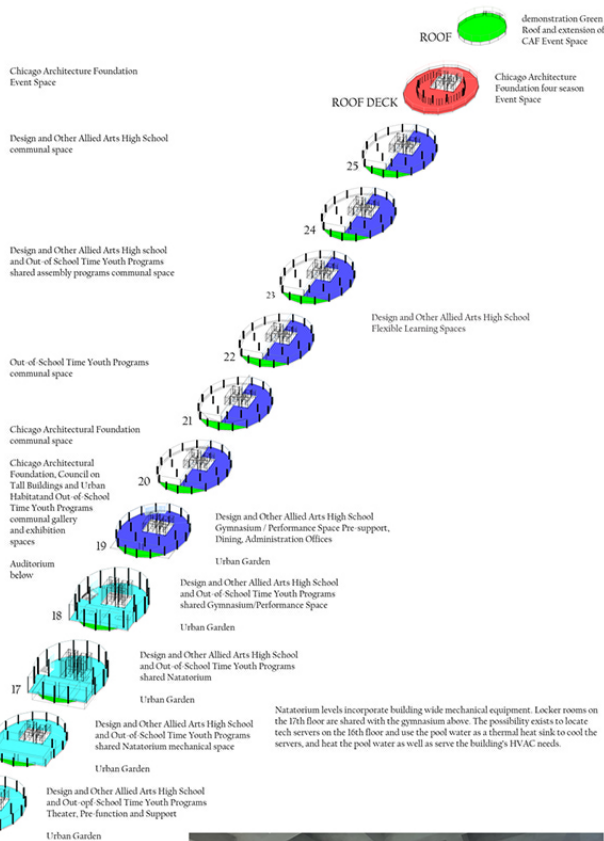


Out-of-School Time Youth Programs

BELOW GRADE 



MASSING ISOMETRIC



Natatorium levels incorporate building wide mechanical equipment. Locker rooms on the 17th floor are shared with the gymnasium above. The possibility exists to locate tech servers on the 16th floor and use the pool water as a thermal heat sink to cool the servers, and heat the pool water as well as serve the building's HVAC needs.



FLEXIBLE LEARNING SPACE

FLEXIBLE LEARNING SPACE
A typical Flexible Learning Space maximizes change while taking advantage of the center's unique place in the Chicago urban environment.



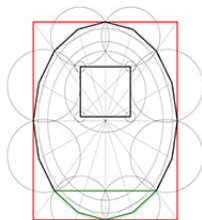
FLEXIBLE LEARNING SPACE LOUNGE AREA

Users needs periodic rests for their eyes and minds that involve opportunities for distant vistas and a chance to reframe their perspectives.



NATATORIUM

Four season indoor activities are available to users and their families.



PLAN GEOMETRY

Center for Architecture, Design and Education