

Calibrating the 8" Touch Dynamic

Procare Touch Computer

Before You Begin

1. Download the utility from ProcareSupport.com. Search for KB9001. The file is in .zip format.
2. Extract the .zip file and then run the Setup file within it.
3. Go to *Start > All Programs > Touch Utility*.
4. Run 'Touch Utility'.
5. If you get an error that says "No Device was found", follow these steps:



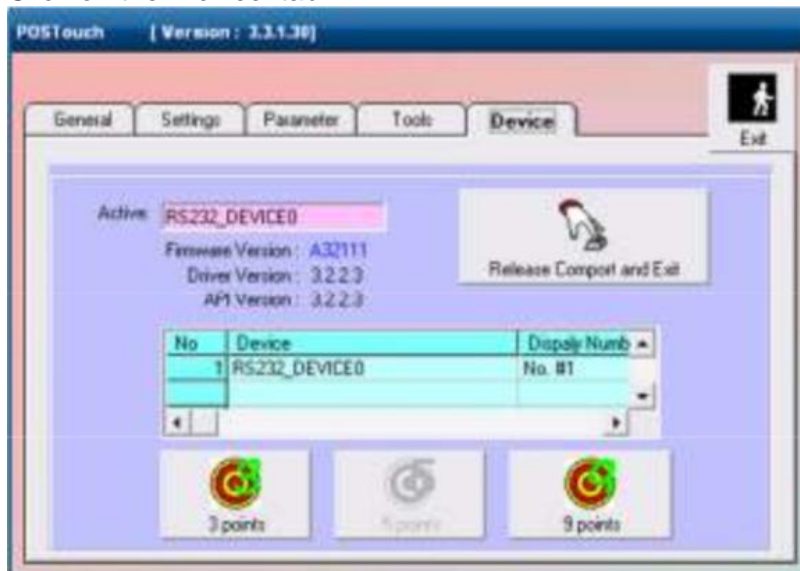
- a. Go to *Start > All Programs > Touch Utility*.
- b. Run 'Scan32 Touch Devices'.
- c. Close this window when it is done. It should have found a device.



- d. If it didn't find anything, then reboot and try again.
6. You should be looking at the main screen of POS Touch.



- Click on the 'Device' tab.



- Click on the button that says '3 points' and follow the instructions.
- If this doesn't fix the calibration issue, click on the 'Release Comport and Exit' button and then follow these instructions again, starting at step 3.