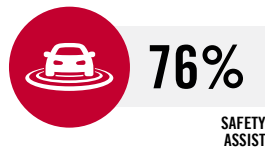
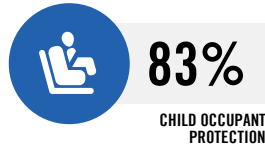
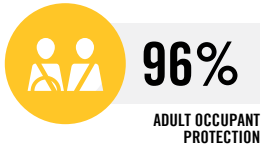


# TOYOTA COROLLA

AUGUST 2018 - ONWARDS  
ALL HATCH VARIANTS



TESTED  
2018



TOYOTA COROLLA  
HATCH

## OVERVIEW

The Toyota Corolla hatch was introduced in Australia and New Zealand in August 2018. This ANCAP safety rating applies to all petrol and hybrid hatch variants.

Dual frontal, side chest-protecting and side head-protecting (curtain) airbags and a driver knee airbag are standard.

All three grades of autonomous emergency braking (City, Interurban & Vulnerable Road User) as well as lane keep assist (LKA) with lane departure warning (LDW) are standard on all variants.

**ANCAP SAFETY RATING**



**RATING YEAR (DATESTAMP)**

2018

**VEHICLE TYPE**

Small Car

**AIRBAGS**

Dual frontal, side chest,  
side head, driver knee

## RATING APPLICABILITY

VARIANT	BODY TYPE	ENGINE	DRIVETRAIN	AUS	NZ
Toyota Corolla Ascent Sport	5 door hatch	2.0 litre petrol	FWD	✓	-
Toyota Corolla Ascent Sport ◆	5 door hatch	1.8 litre hybrid	FWD	✓	-
Toyota Corolla GX	5 door hatch	2.0 litre petrol	FWD	-	✓
Toyota Corolla GX	5 door hatch	1.8 litre hybrid	FWD	-	✓
Toyota Corolla SX	5 door hatch	2.0 litre petrol	FWD	✓	✓
Toyota Corolla SX	5 door hatch	1.8 litre hybrid	FWD	✓	-
Toyota Corolla ZR	5 door hatch	2.0 litre petrol	FWD	✓	✓
Toyota Corolla ZR	5 door hatch	1.8 litre hybrid	FWD	✓	✓

✓ COVERED BY THIS RATING

✗ NOT COVERED BY THIS RATING

◆ TESTED VARIANT

# ADULT OCCUPANT PROTECTION



**96%**

36.67 POINTS  
OUT OF 38

The passenger compartment remained stable in the frontal offset test. Dummy readings showed ADEQUATE protection of the driver's chest and lower leg of both the driver and front passenger. Protection was GOOD for all other critical body areas of both the driver and front passenger.

In the full width frontal test, protection was ADEQUATE for the chest of the driver and chest and neck of the rear passenger. GOOD protection was offered to all other critical body regions of both the driver and rear passenger.

In the side impact test and the oblique pole test, protection offered to all critical body regions was GOOD and maximum points were scored in these tests.

The autonomous emergency braking system showed GOOD performance in low-speed test scenarios typical of city driving.

<b>FRONTAL OFFSET#</b>	7.31 (out of 8)
<b>FULL WIDTH FRONTAL#</b>	7.57 (out of 8)
<b>SIDE IMPACT#</b>	8.00 (out of 8)
<b>OBLIQUE POLE#</b>	8.00 (out of 8)
<b>WHIPLASH PROTECTION</b>	1.79 (out of 2)
<b>AEB - City</b>	4.00 (out of 4)

# Scaled scores. Total test scored out of 16.00 points.

## FRONTAL OFFSET TEST (64 KM/H)



**Driver**

Head / neck:	4.00 points
Chest:	2.70 points
Upper legs:	4.00 points
Lower legs:	3.94 points
Deductions:	Nil



**Front Passenger**

Head / neck:	4.00 points
Chest:	4.00 points
Upper legs:	4.00 points
Lower legs:	3.91 points
Deductions:	Nil

## FULL WIDTH FRONTAL TEST (50 KM/H)



**Driver**

Head:	4.00 points
Neck:	4.00 points
Chest:	3.69 points
Upper legs:	4.00 points
Deductions:	Nil



**Rear Passenger**

Head:	4.00 points
Neck:	3.82 points
Chest:	2.77 points
Upper legs:	4.00 points
Deductions:	Nil

## SIDE IMPACT TEST (50 KM/H)



**Driver**

Head:	4.00 points
Chest:	4.00 points
Abdomen:	4.00 points
Pelvis:	4.00 points
Deductions:	Nil



**Driver**

Head:	4.00 points
Chest:	4.00 points
Abdomen:	4.00 points
Pelvis:	4.00 points
Deductions:	Nil

## WHIPLASH (REAR IMPACT) PROTECTION TEST



**Rear Passenger**

Rear:	0.38 points
Front:	1.41 points



**Driver / Front Passenger**

## AEB - CITY (10-50 KM/H)

Score: 4.00 points

<b>OVERLAP</b>	-50%	-75%	100%	75%	50%
<b>PERFORMANCE</b>	GOOD				

GOOD ADEQUATE MARGINAL WEAK POOR

# CHILD OCCUPANT PROTECTION



**83%**

40.91 POINTS  
OUT OF 49

In the frontal offset test, protection of the head of the 6 year dummy and neck of both the 6 and 10 year dummies was ADEQUATE, while the protection offered to all other body regions was GOOD.

Protection of both child dummies in the side impact test was GOOD, with maximum points scored.

The Toyota Corolla hatch is fitted with lower ISOFix anchorages on the rear outboard seats and top tether anchorages for all rear seating positions.

Installation of typical child restraints available in Australia and New Zealand showed GOOD results and the Corolla scored full points for this assessment.

<b>DYNAMIC TEST (FRONT)</b>	14.91 (out of 16)
<b>DYNAMIC TEST (SIDE)</b>	8.00 (out of 8)
<b>RESTRAINT INSTALLATION</b>	12.00 (out of 12)
<b>ON-BOARD SAFETY FEATURES</b>	6.00 (out of 13)

## FRONTAL OFFSET TEST (64 KM/H)

## SIDE IMPACT TEST (50 KM/H)



6 year old

10 year old

10 year old

6 year old

## ON-BOARD SAFETY FEATURES

FEATURE	FRONT PASSENGER	2nd ROW OUTBOARD	2nd ROW CENTRE	3rd ROW OUTBOARD	3rd ROW CENTRE
ISOFix	-	●	✗	-	-
Integrated child restraints	-	✗	✗	-	-
Top tether anchorage	✗	●	●	-	-
Airbag disabling	✗	-	-	-	-

● FITTED TO TEST CAR AS STANDARD    ● NOT FITTED TO TEST CAR BUT AVAILABLE AS AN OPTION    ✗ NOT AVAILABLE    - NOT APPLICABLE

GOOD    ADEQUATE    MARGINAL    WEAK    POOR

# CHILD OCCUPANT PROTECTION



83%

40.91 POINTS  
OUT OF 49

## CHILD RESTRAINT INSTALLATION\*


	CHILD RESTRAINT (CRS) TYPE <sup>^</sup>	FRONT ROW	2nd ROW			3rd ROW			
		PASSENGER	LEFT	CENTRE	RIGHT	LEFT	CENTRE	RIGHT	
BELTED	TYPE A	Rearward facing capsule	×	●	●	●	-	-	-
		Rearward facing with harness - convertible (Model A)	×	●	●	●	-	-	-
		Rearward facing with harness - convertible (Model B)	×	●	●	●	-	-	-
	TYPE B	Forward facing with harness - convertible (Model A)	×	●	●	●	-	-	-
		Forward facing with harness - convertible (Model B)	×	●	●	●	-	-	-
	TYPE E	Booster - 4 to 8 years	×	●	●	●	-	-	-
TYPE F	Booster - 4 to 10 years	×	●	●	●	-	-	-	
ISOFIX	TYPE A	Rearward facing capsule	×	●	-	●	-	-	-
		Rearward facing with harness - convertible (Model A)	×	●	-	●	-	-	-
		Rearward facing with harness - convertible (Model B)	×	●	-	●	-	-	-
	TYPE B	Forward facing with harness - convertible (Model A)	×	●	-	●	-	-	-
		Forward facing with harness - convertible (Model B)	×	●	-	●	-	-	-

\* Installation of each child restraint is assessed separately in each position. Installation of multiple restraints has not been assessed and may not be possible.

<sup>^</sup> The above list of child restraints has been selected to provide a general indication of the rated vehicle's ability to accommodate various CRS types. ANCAP does not endorse or recommend any one CRS brand or model, nor does it rate the safety of child restraints.

● INSTALL WITHOUT PROBLEM   ● INSTALL WITH CARE   ● CANNOT BE FITTED SAFELY   × INSTALLATION NOT ALLOWED   - NOT APPLICABLE

# VULNERABLE ROAD USER PROTECTION



**86%**  
41.37 POINTS  
OUT OF 48

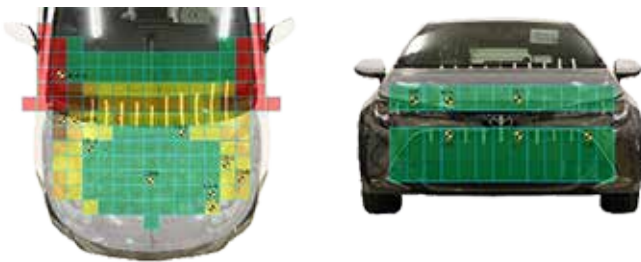
The bonnet provided mostly GOOD or ADEQUATE protection to the head of a struck pedestrian over most of its surface. Some MARGINAL results were recorded at the base of the windscreen, with POOR results recorded only on the stiff windscreen pillars.

Protection of pedestrians' legs and pelvis was GOOD at all test locations.

The autonomous emergency braking system is capable of detecting and reacting to vulnerable road users including pedestrians and cyclists. The AEB system offered GOOD performance in tests of its effectiveness in pedestrian test scenarios under both daylight and night-time conditions. GOOD performance was also seen in cyclist test scenarios with collisions avoided or mitigated at almost all test speeds.

HEAD IMPACTS	18.07 (out of 24)
UPPER LEG IMPACTS	6.00 (out of 6)
LOWER LEG IMPACTS	6.00 (out of 6)
AEB - Pedestrian	5.97 (out of 6)
AEB - Cyclist	5.33 (out of 6)

## PEDESTRIAN IMPACT TEST (40 KM/H)



## AUTONOMOUS EMERGENCY BRAKING (PEDESTRIAN & CYCLIST) GOOD

**SYSTEM NAME:** Toyota Safety Sense  
**TYPE:** Autonomous emergency braking with forward collision warning  
**OPERATIONAL FROM:** 10 km/h to 80 km/h  
**DESCRIPTION:** Defaults ON for every journey. System detects pedestrians and cyclists and functions in both day and night.

TEST SCENARIO	AEB - Pedestrian										AEB - Cyclist						
	Adult crossing towards kerb (50%)		Adult crossing from kerb (25%)		Adult crossing from kerb (75%)		Child running (obstructed)		Adult walking along road		FORWARD COLLISION WARNING		Cyclist crossing from kerb		Cyclist travelling along road (50%)		Cyclist travelling along road (25%)
	DAY	NIGHT	DAY	NIGHT	DAY	NIGHT	DAY	NIGHT	DAY	NIGHT	DAY	NIGHT	DAY	DAY	DAY		
PERFORMANCE	GOOD										GOOD						

GOOD ADEQUATE MARGINAL WEAK POOR

# SAFETY ASSIST



**76%**

9.90 POINTS  
OUT OF 13

The Toyota Corolla hatch is fitted as standard with a range of safety assist features including autonomous emergency braking (AEB) and a lane support system (LSS) with lane keep assist (LKA). Emergency lane keeping (ELK) functionality is not available. A blind spot monitor (BSM) is not available on Ascent Sport variants, but is available on others.

Tests of its AEB system showed GOOD performance in highway speed scenarios, while LSS testing showed ADEQUATE results.

A standard-fit speed assistance system (SAS) is also offered which identifies the local speed limit and allows the driver to set the speed accordingly.

A seatbelt reminder system is fitted for all front and rear seating positions.

<b>SPEED ASSISTANCE SYSTEMS</b>	2.25 (out of 3)
<b>SEAT BELT REMINDERS</b>	3.00 (out of 3)
<b>LANE SUPPORT SYSTEMS</b>	2.25 (out of 4)
<b>AEB - Interurban</b>	2.40 (out of 3)

## LANE SUPPORT SYSTEMS (LSS)

ADEQUATE

**SYSTEM NAME:** Toyota Safety Sense  
**OPERATIONAL FROM:** 50 km/h to 180 km/h

EMERGENCY LANE KEEPING (ELK)							
TEST SCENARIO	Oncoming vehicle	Overtaking vehicle (GVT at 72 km/h)		Overtaking vehicle (GVT at 80 km/h)		Road edge	
		UNINTENTIONAL	INTENTIONAL	UNINTENTIONAL	INTENTIONAL		
PERFORMANCE	-	-	-	-	-	-	-
[NOT AVAILABLE]							

LANE KEEP ASSIST (LKA)										
TEST SCENARIO	Dashed Line				Solid Line				Road Edge	
PERFORMANCE	GOOD									

HUMAN MACHINE INTERFACE (HMI)		
FUNCTION	Lane Departure Warning (LDW)	PASS
	Blind Spot Monitoring (BSM)	[NOT FITTED]
PERFORMANCE	MARGINAL	

■ GOOD   
 ■ ADEQUATE   
 ■ MARGINAL   
 ■ WEAK   
 ■ POOR

# SAFETY ASSIST



76%

9.90 POINTS  
OUT OF 13

## AUTONOMOUS EMERGENCY BRAKING (INTERURBAN)

GOOD

**SYSTEM NAME:** Toyota Safety Sense  
**TYPE:** Autonomous emergency braking with forward collision warning  
**OPERATIONAL FROM:** 10 km/h to 180 km/h  
**DESCRIPTION:** Defaults ON for every journey.

### HUMAN MACHINE INTERFACE (HMI)

PERFORMANCE

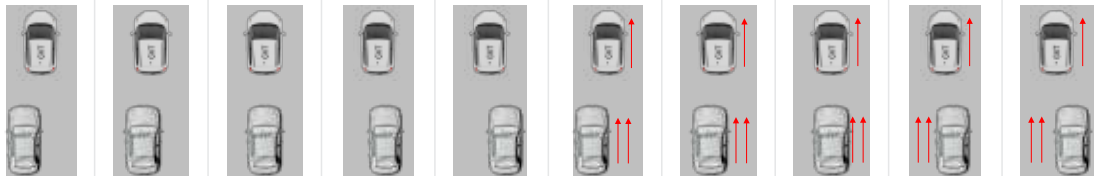
POOR

### FORWARD COLLISION WARNING (FCW)

TEST SCENARIO

Driving towards a stationary car

Driving towards a slower moving car



PERFORMANCE

GOOD

### AUTONOMOUS EMERGENCY BRAKING - Interurban

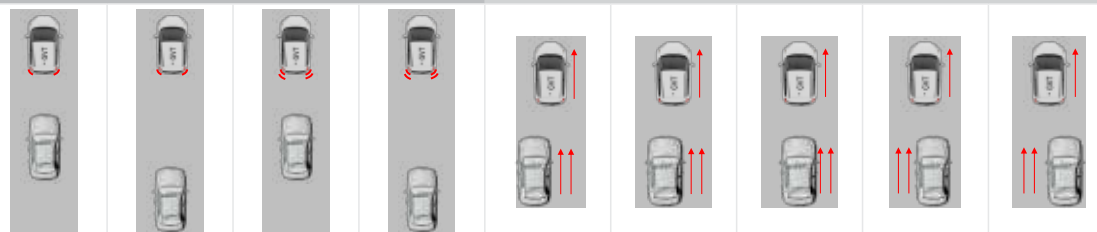
TEST SCENARIO

Toward car braking lightly

Toward car braking heavily

Driving towards a slower moving car

12m HEADWAY    40m HEADWAY    12m HEADWAY    40m HEADWAY



PERFORMANCE

GOOD

## SPEED ASSISTANCE SYSTEMS (SAS)

**SYSTEM NAME:** Toyota Safety Sense

SAS FEATURE	DESCRIPTION
Speed Limit Information Function (SLIF)	Camera based
Speed Limitation Function	System advised

## SEAT BELT REMINDERS (SBR)

WARNING TYPE	DRIVER	FRONT PASSENGER	REAR PASSENGERS
Occupant Detection	-	●	●
Visual	●	●	●
Audible	●	●	●

● PASS    ● FAIL    ✗ NOT AVAILABLE    - NOT APPLICABLE

GOOD    ADEQUATE    MARGINAL    WEAK    POOR

# SAFETY FEATURES & TECHNOLOGIES

FEATURE / TECHNOLOGY~	AVAILABILITY	
	AUS	NZ
Seat belts (three-point) for all forward-facing seats	●	●
Seat belt pre-tensioners (front)	●	●
Seat belt pre-tensioners (rear outboard)	●	●
Seat belt pre-tensioners (rear centre)	✗	✗
Intelligent seat belt reminder (driver)	●	●
Intelligent seat belt reminder (front passenger)	●	●
Intelligent seat belt reminder (2nd row seats)	●	●
Intelligent seat belt reminder (3rd row seats)	-	-
Airbag - frontal (driver)	●	●
Airbag - frontal (passenger)	●	●
Airbags - side, chest protection (front seats)	●	●
Airbags - side, chest protection (2nd row seats)	✗	✗
Airbags - side, chest protection (3rd row seats)	-	-
Airbags - side, head protection (front seats)	●	●
Airbags - side, head protection (2nd row seats)	●	●
Airbags - side, head protection (3rd row seats)	-	-
Airbag - knee (driver)	●	●
Airbag - knee (front passenger)	✗	✗
Airbag disabling switch - automatic (front passenger)	✗	✗
Airbag disabling switch - manual (front passenger)	✗	✗
Head restraints for all seats	●	●
Active bonnet	✗	✗
Adaptive cruise control (ACC)	●	●
Adaptive headlights	✗	✗
Anti-lock braking system (ABS)	●	●
Autonomous emergency braking (AEB) - City	●	●
Autonomous emergency braking (AEB) - Interurban	●	●
Autonomous emergency braking (AEB) - VRU	●	●
Automatic emergency call (eCall)	✗	✗
Automatic headlights	●	●
Automatic high beam	●	●

FEATURE / TECHNOLOGY~	AVAILABILITY	
	AUS	NZ
Blind spot monitor (BSM)	●	●
Child presence alert	✗	✗
Daytime running lights (DRL)	●	●
Electronic brakeforce distribution (EBD)	●	●
Electronic data recorder (EDR)	✗	✗
Electronic stability control (ESC)	●	●
Emergency brake assist (EBA)	●	●
Emergency stop signal (ESS)	●	●
Fatigue reminder	●	●
Fatigue detection	●	●
Forward collision warning (FCW)	●	●
Hill launch assist	●	●
Integrated child seat / restraint ISOFix	✗	✗
Lane departure warning (LDW)	●	●
Lane keep assist (LKA)	●	●
Pre-crash systems	●	●
Rear cross-traffic alert (RCTA)	✗	✗
Reversing collision avoidance (camera)	●	●
Reversing collision avoidance (auto brake)	✗	✗
Roll stability system	✗	✗
Secondary / multi-collision brake	✗	✗
Speed assistance - auto / intelligent speed limiter	●	●
Speed assistance - manual speed limiter	●	●
Speed assistance - speed sign recognition & warning	●	●
Smart (intelligent) key	✗	✗
Trailer stability control	✗	✗
Tyre pressure monitoring system (TPMS)	✗	✗
Vehicle-to-infrastructure communication (V2I)	✗	✗
Vehicle-to-vehicle communication (V2V)	✗	✗

~ Specifications & availability subject to change. Please check with the vehicle manufacturer for confirmation of vehicle specification.

● STANDARD   ● NOT AVAILABLE ON BASE VARIANT BUT STANDARD OR OPTIONAL ON HIGHER VARIANTS   ● OPTIONAL   ✗ NOT AVAILABLE

## MODEL VARIANTS:

ANCAP safety ratings do not automatically extend to variants that have different body styles, engine configurations, driven wheels or occupant restraint systems (e.g. fewer airbags). In these cases, ANCAP considers technical evidence submitted by manufacturers before deciding on the extension of a rating to additional variants of a model.

## RATING YEAR (DATESTAMP):

The Rating Year denotes the year requirements against which a vehicle has been assessed. The Rating Year is determined by ANCAP and, for vehicles rated from 2018, the Rating Year is the year in which the vehicle was tested.

## ASSESSMENT DETAILS

TESTED MAKE / MODEL	Toyota Corolla 1.8L hybrid RHD
TESTED VEHICLE(S) BUILT	2018
TESTED BODY TYPE	5 door hatch
TESTED VEHICLE ENGINE	1.8 litre petrol / electric hybrid
RATING PUBLISHED	23 August 2018
RATING UPDATED	27 August 2018