



SAFE SOLUTIONS FOR BEACHFRONT LIGHTING



## Wildlife-Friendly Solutions

### 7318 LED Turtle Light

The 7318 LED "Turtle Light" is Wildlife Lighting Certified and sea turtle approved by the Florida Fish and Wildlife Conservation Commission (FWC) for beachside and shore perpendicular locations. Certification # 2018-062.

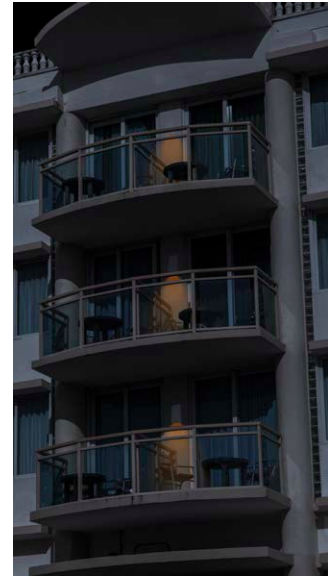
#### Features:

- High-quality injection molded housing
- UV/corrosion-resistant polycarbonate construction
- CSA wet listed
- Dusk-to-dawn option (photo control)
- Finishes available: BL, BR, BZ, CR, GM, GR, MB, NT, PL, RC, WH
- "T" Series low wattage amber LED system (585nm - 595nm range).

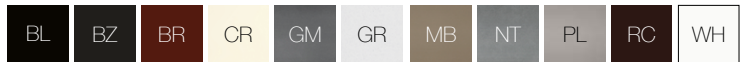
### Wall Mount Turtle Light



7318 LED  
15"l x 7"w



**WET**



## Durable Outdoor Solutions

### 7317 LED

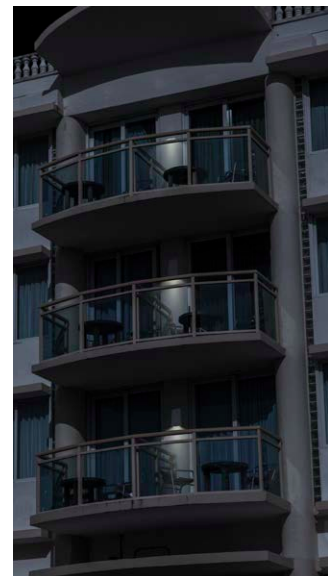
#### Features:

- LED and CFL options
- UV/corrosion-resistant polycarbonate construction
- Optional white or clear acrylic diffuser
- CSA wet listed
- ENERGY STAR® options
- Dusk-to-dawn option (photo control)
- Finishes available: BL, BR, BZ, CR, GM, GR, MB, NT, PL, RC, WH

### Wall Mount



7317 LED  
15"l x 7"w



**WET**





## Durable Outdoor Solutions

### 7319 LED

Strong enough for the coast, yet fashionable enough for decorative interiors, Brownlee's 7319 LED is an energy efficient, all-around wall sconce.

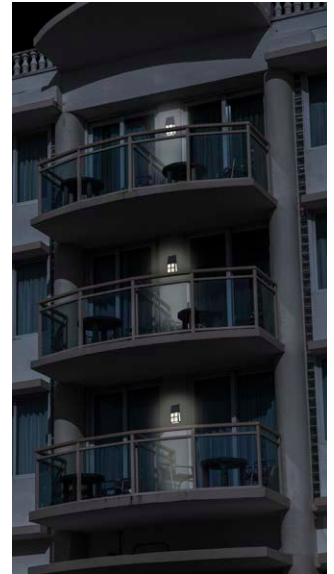
#### Features:

- LED and CFL options
- UV/corrosion-resistant polycarbonate construction
- Acrylic diffuser
- CSA wet listed
- ENERGY STAR® options
- Dusk-to-dawn option (photo control)
- Finishes available: BL, BR, BZ, CR, GM, GR, MB, NT, PL, RC, WH

#### Wall Mount



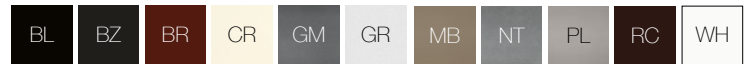
7319 LED  
15"l x 7"w



WET



ADA



### 7155 LED & 7156 LED

#### Features:

- LED and CFL options
- Injection molded polycarbonate housing.
- UV stabilized white polycarbonate diffuser
- CSA Wet Listed
- ENERGY STAR® options
- Occupancy sensor option
- Finishes available: BL, WH

#### Ceiling or Wall Mount



7155 LED  
10.75"sq



7156 LED  
12"dia



WET



ADA

### 7080 LED

#### Features:

- LED, CFL & HID options
- Injection molded polycarbonate housing
- UV stabilized frosted polycarbonate diffuser
- Fitter designed for 3" diameter poles
- CSA Wet Listed
- ENERGY STAR® options
- Finishes available: BL

#### Post Top



7080 LED  
10.5"sq



WET

c US





## Durable Outdoor Solutions

### 7700-Series

#### Features:

- LED and CFL options
- UV stabilized polycarbonate, injection molded one piece trim
- Die-cast, one piece marine grade aluminum housing available in two depths
- CSA Wet Listed
- ENERGY STAR® options
- Dusk-to-dawn option (photo control)
- Occupancy sensor option
- Finishes available: BL, BZ, TI, WH

7700, 7702 & 7704: 13.25" dia  
7710, 7712, 7714 & 7716: 13"l x 9.25"w

Wall Mount



7704 LED



7714 LED



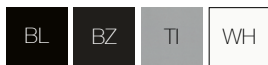
7716 LED



WET



Ceiling or Wall Mount



7700 LED



7702 LED



7712 LED



7710 LED

