

Elementary Attendance Areas

- | | |
|-----------------------------------|----------------------------------|
| Schools | Attendance Areas |
| Ashley Falls | ASHLEY FALLS |
| Carmel Del Mar | CARMEL DEL MAR |
| Del Mar Heights/
Del Mar Hills | DEL MAR HEIGHTS
DEL MAR HILLS |
| Sage Canyon | SAGE CANYON |
| Torrey Hills | TORREY HILLS |
| Sycamore Ridge | SYCAMORE RIDGE |
| School #8 | SCHOOL #8 |

- Rainwater
- Surface Street
- Freeway
- Bypass
- Water
- Study Areas
w/Numbers



Ashley Falls

1. CMTO GIRASOL
2. CMTO BAVTIZO
3. CMTO FACETO
4. CMTO ANGELICO
5. CMTO CANOR
6. CMTO IMPERSADO
7. CMTO CAPANEO
8. CMTO EVANGELICO
9. CMTO CALIMOSO
10. CMTO LAPIZ
11. CMTO DIEGO

- 1
- 2
- 3
- 4
- 5
- 6
- 7
- 8

- 10
- 11

Del Mar Union School District

Ashley Falls Attendance Area

<ul style="list-style-type: none"> Ashley Falls Study Areas w/ Numbers Water 	<ul style="list-style-type: none"> Surface Streets Freeways Ramps Railroads
--	---



Del Mar Union School District

Del Mar Hills &
Del Mar Heights
Attendance Area

- DEL MAR HILLS
- DEL MAR HEIGHTS
- Study Areas w/ Numbers
- Water
- Surface Streets
- Freeways
- Ramps
- Railroads



0 0.125 0.25 0.5 0.75 1 Miles

dtp Data Technologies & Planning, Inc.
1000 S. 10th Street, Suite 200
San Diego, CA 92161
www.dtpinc.com

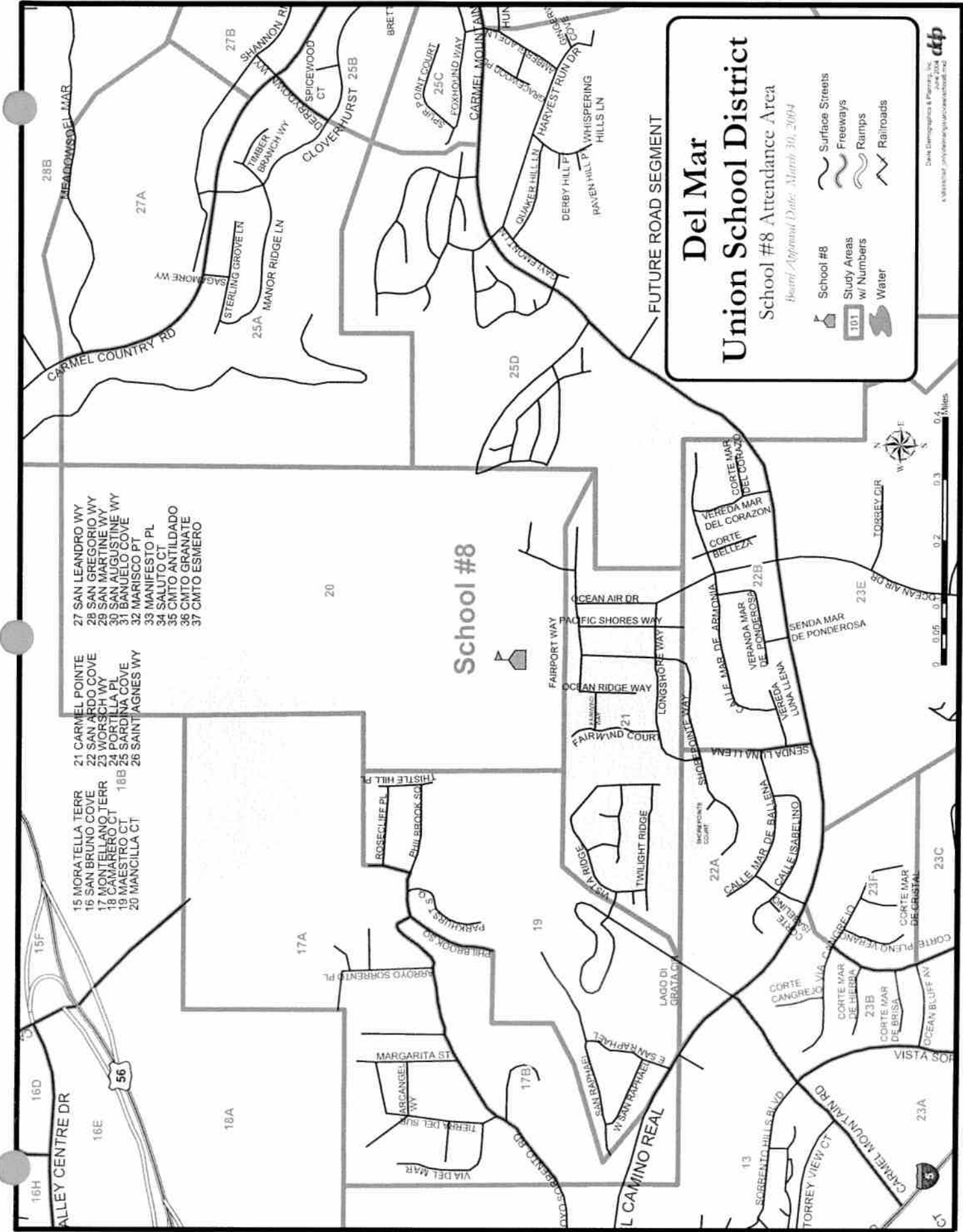
- 1 NIMRODE PL
- 2 WILKINSON BL
- 3 BAYVIEW DR
- 4 CANTONIA PL
- 5 WALKER PL
- 6 WINDMILL HILLS CT
- 7 BURNING BUSH CT
- 8 COLUMBIA PL
- 9 COUNTRY CLUB TOWN
- 10 WILLOWBROOK CT
- 11 SURREY PLAINS
- 12 WINDSOR HILL CT
- 13 LISA HILL DR
- 14 OCEAN VISTA RD
- 15 JACARANDA CT
- 16 WINDSOR CT
- 17 SANDTOWN DR
- 18 SANDSPRING DR
- 19 LANDMARK CT
- 20 WINDSOR PL
- 21 WINDSOR HILL
- 22 LAMAR BL
- 23 WINDSOR BL
- 24 WINDSOR BL
- 25 WINDSOR BL
- 26 WINDSOR BL
- 27 WINDSOR BL
- 28 WINDSOR BL
- 29 WINDSOR BL
- 30 WINDSOR BL
- 31 WINDSOR BL
- 32 WINDSOR BL
- 33 WINDSOR BL
- 34 WINDSOR BL
- 35 WINDSOR BL
- 36 WINDSOR BL
- 37 WINDSOR BL
- 38 WINDSOR BL
- 39 WINDSOR BL
- 40 WINDSOR BL
- 41 WINDSOR BL
- 42 WINDSOR BL
- 43 WINDSOR BL
- 44 WINDSOR BL
- 45 WINDSOR BL
- 46 WINDSOR BL
- 47 WINDSOR BL
- 48 WINDSOR BL
- 49 WINDSOR BL
- 50 WINDSOR BL
- 51 WINDSOR BL
- 52 WINDSOR BL
- 53 WINDSOR BL
- 54 WINDSOR BL
- 55 WINDSOR BL
- 56 WINDSOR BL
- 57 WINDSOR BL
- 58 WINDSOR BL
- 59 WINDSOR BL
- 60 WINDSOR BL
- 61 WINDSOR BL
- 62 WINDSOR BL
- 63 WINDSOR BL
- 64 WINDSOR BL
- 65 WINDSOR BL
- 66 WINDSOR BL
- 67 WINDSOR BL
- 68 WINDSOR BL
- 69 WINDSOR BL
- 70 WINDSOR BL
- 71 WINDSOR BL
- 72 WINDSOR BL
- 73 WINDSOR BL
- 74 WINDSOR BL
- 75 WINDSOR BL
- 76 WINDSOR BL
- 77 WINDSOR BL
- 78 WINDSOR BL
- 79 WINDSOR BL
- 80 WINDSOR BL
- 81 WINDSOR BL
- 82 WINDSOR BL
- 83 WINDSOR BL
- 84 WINDSOR BL
- 85 WINDSOR BL
- 86 WINDSOR BL
- 87 WINDSOR BL
- 88 WINDSOR BL
- 89 WINDSOR BL
- 90 WINDSOR BL
- 91 WINDSOR BL
- 92 WINDSOR BL
- 93 WINDSOR BL
- 94 WINDSOR BL
- 95 WINDSOR BL
- 96 WINDSOR BL
- 97 WINDSOR BL
- 98 WINDSOR BL
- 99 WINDSOR BL
- 100 WINDSOR BL

Del Mar Hills

Del Mar Heights

56

22



Del Mar Union School District School #8 Attendance Area

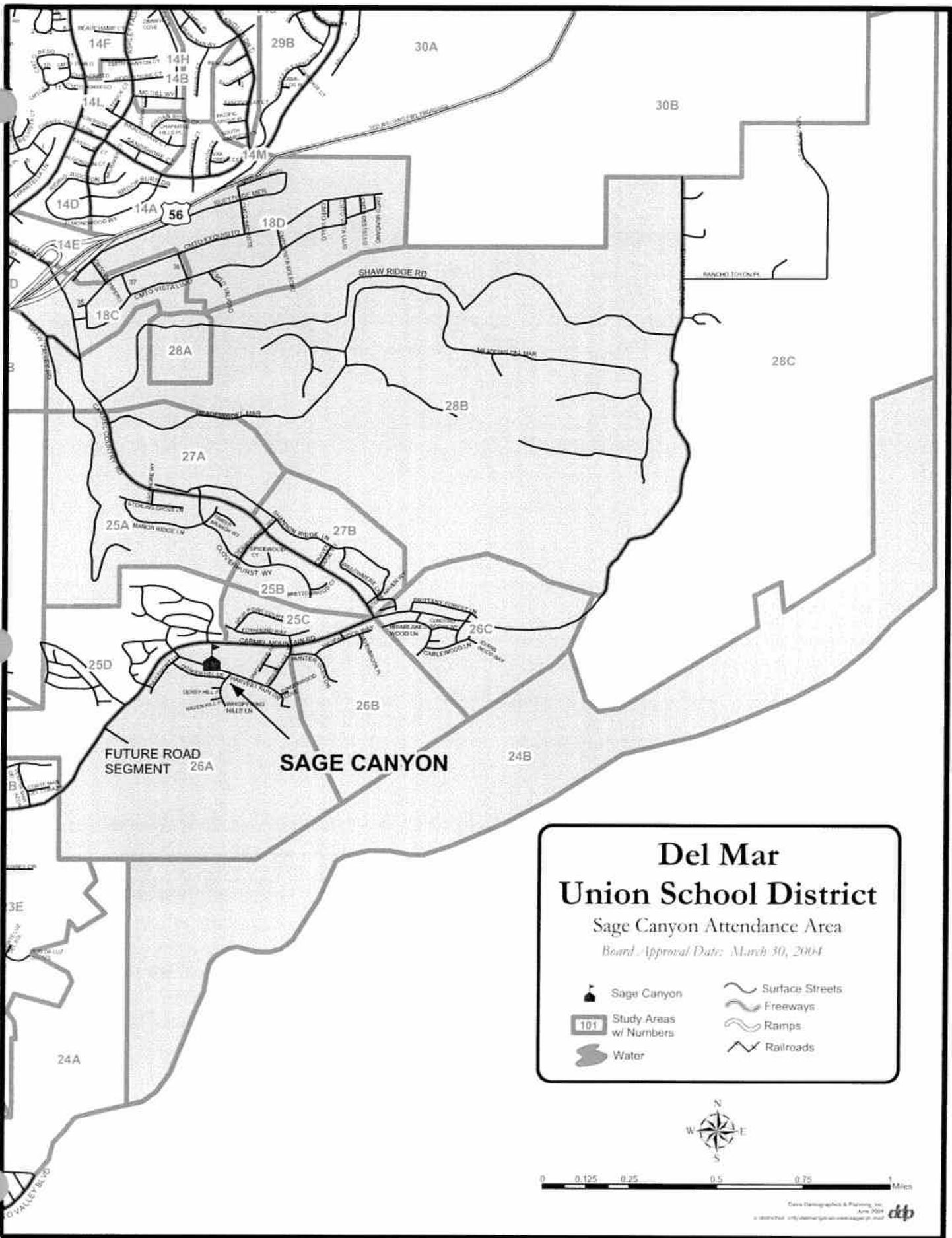
Board Approval Date: March 30, 2004

<ul style="list-style-type: none"> School #8 Study Areas w/ Numbers 	<ul style="list-style-type: none"> Surface Streets Freeways Ramps Railroads
---	---

- 27 SAN LEANDRO WY
- 28 SAN GREGORIO WY
- 29 SAN MARTINE WY
- 30 SAN AUGUSTINE WY
- 31 BANUELO COVE
- 32 MARISCO PT
- 33 MANIFESTO PL
- 34 SALUTO CT
- 35 CMTO ANTILDADO
- 36 CMTO GRANATE
- 37 CMTO ESIMERO

- 21 CARMEL POINTE
- 22 SAN ARDO COVE
- 23 WORSCH WY
- 24 PORTILLA PL
- 25 SARDINA COVE
- 26 SAINTAGNES WY





- 15 MORATELLA TERR
- 16 SAN BRUNO COVE
- 17 MONTELLANO TERR
- 18 CAMARERO CT
- 19 MAESTRO CT
- 20 MANCILLA CT



Del Mar Union School District

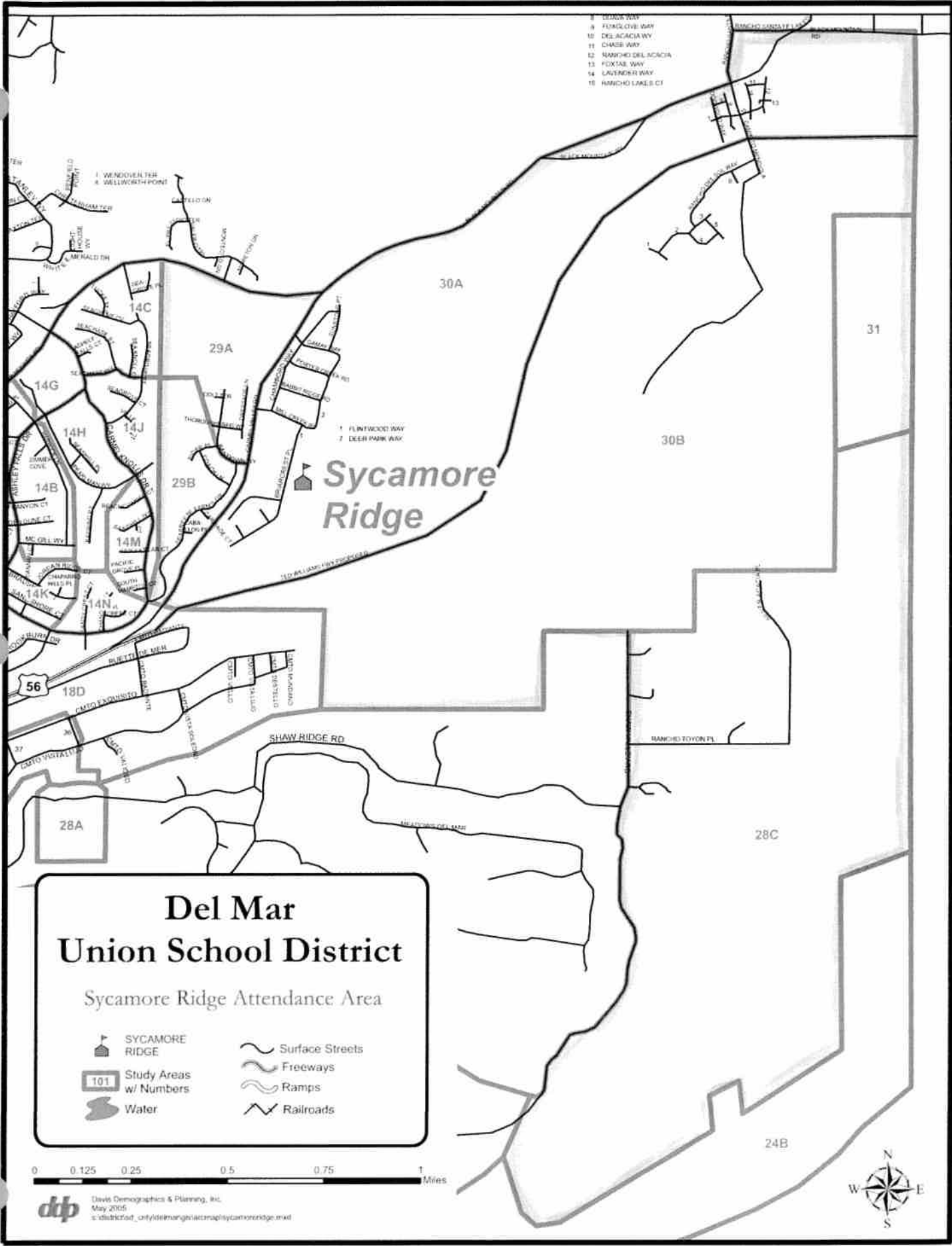
Sage Canyon Attendance Area

Board Approval Date: March 30, 2004

-  Sage Canyon
-  Study Areas w/ Numbers
-  Water
-  Surface Streets
-  Freeways
-  Ramps
-  Railroads



- 8 DEADW WAY
- 9 FUNDIVE WAY
- 10 DELACACIA WY
- 11 CHASE WAY
- 12 RANCHO DELACACIA
- 13 FOXTAIL WAY
- 14 LAUREN WAY
- 15 RANCHO LAKE CT



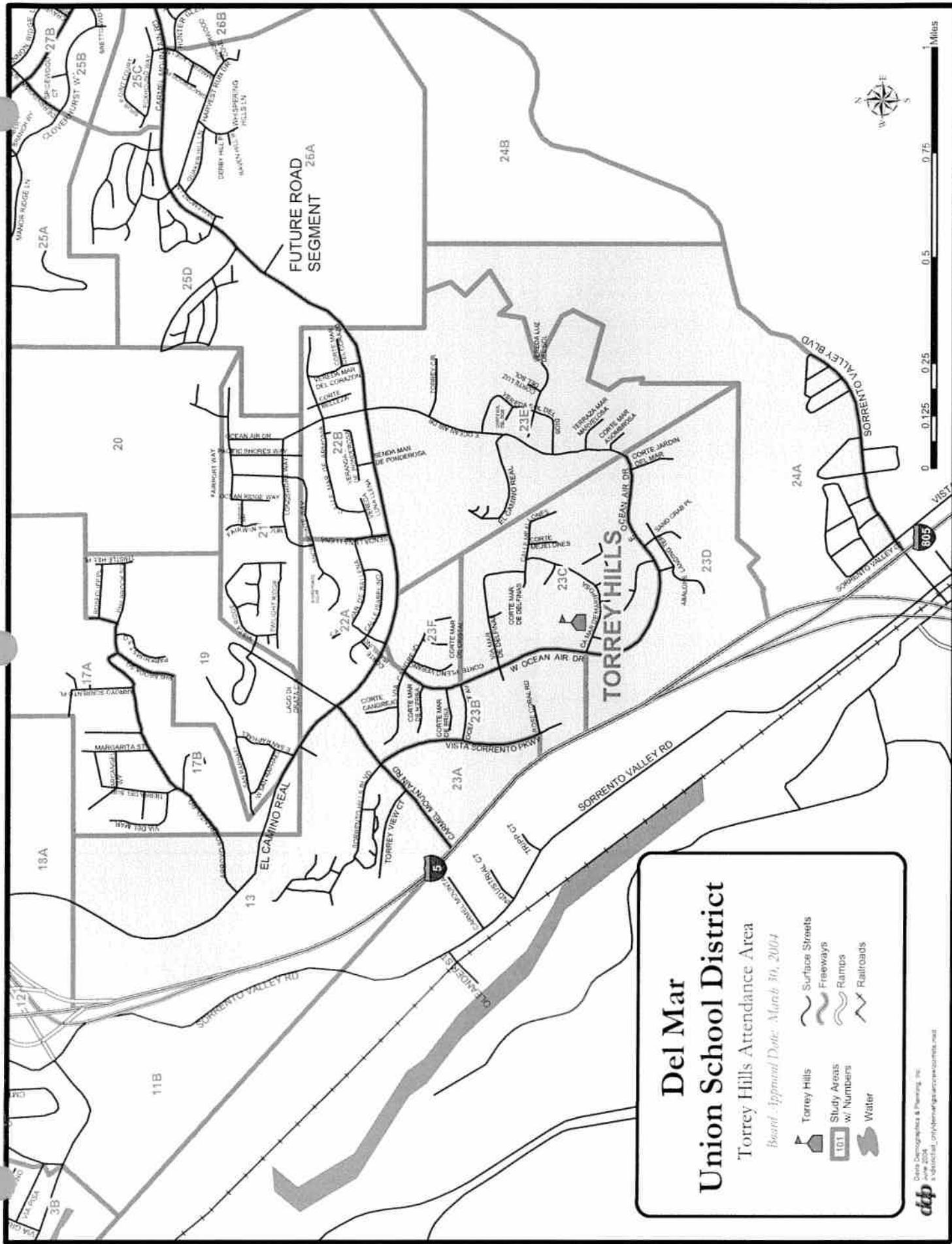
Del Mar Union School District

Sycamore Ridge Attendance Area

- SYCAMORE RIDGE
- Study Areas w/ Numbers
- Water
- Surface Streets
- Freeways
- Ramps
- Railroads

0 0.125 0.25 0.5 0.75 1 Miles





Del Mar
Union School District
 Torrey Hills Attendance Area
Board Approval Date: March 30, 2004

Special Board Meeting of February 11, 2009

February 9, 2009

To: Board Members
From: Rodger Smith, Director of Human Resources & Facilities Planning
Through: Sharon McClain, Superintendent
Subject: Report on Facilities Enrollment Capacity and Current Utilization

Following this narrative is a report on the enrollment capacity of our school facilities and information regarding current utilization of each of the school sites. At the top of the page for each of the sites, the number of permanent and relocatable classrooms at each of the sites is represented. The report also includes the following categories:

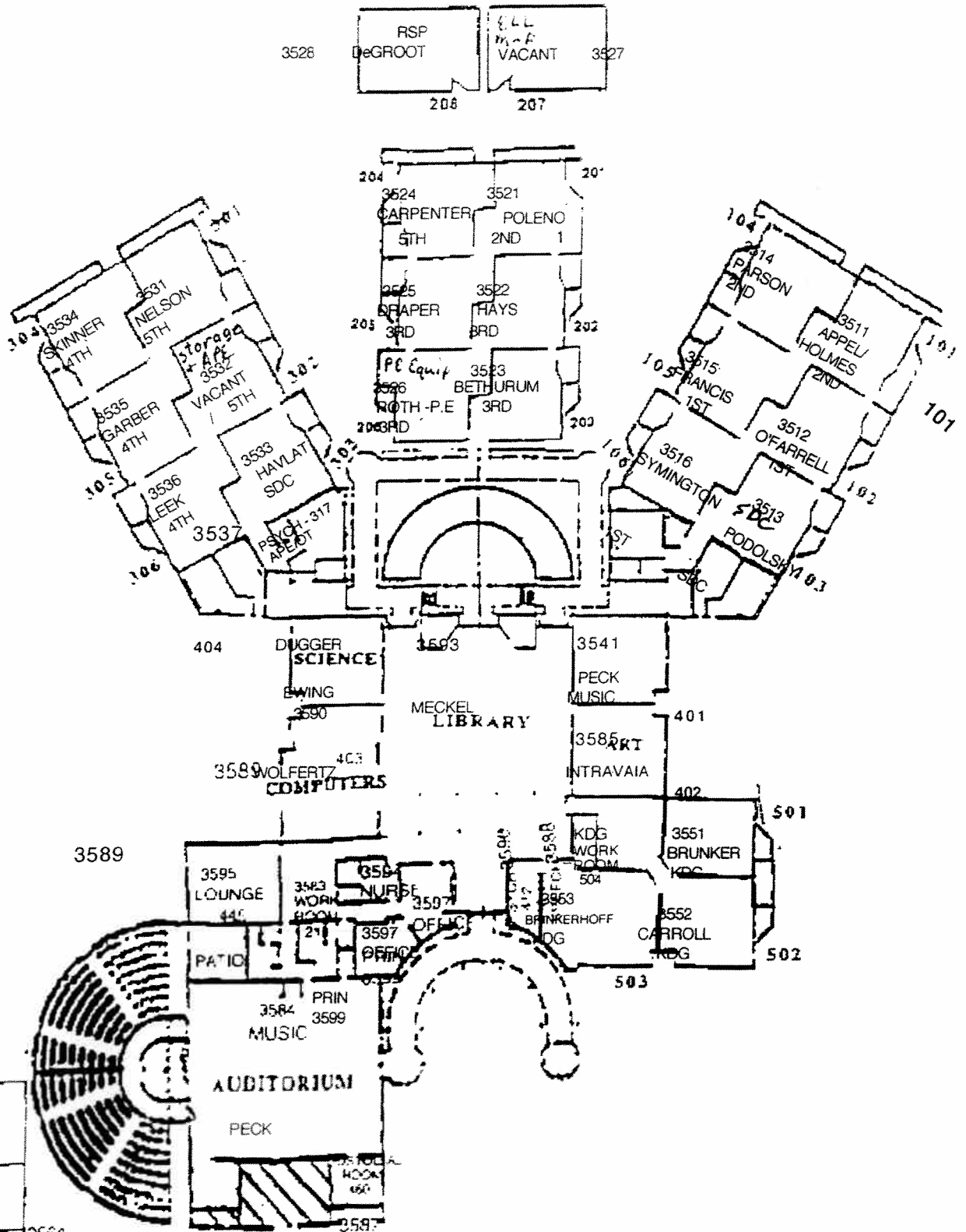
Maximum Potential Capacity: This category represents the total maximum capacity for a site if all available space that could be utilized as classroom space is actually used for that purpose. The only room at each of the sites that was not included in this calculation was the library at each of the sites. The number of kindergarten classrooms listed in this category for each site is the number of classrooms that were specifically designed to house kindergarten classes.

Modified Capacity: The modified capacity of each of the sites was calculated by deducting space that is consistently utilized to house other school programs at each of the sites. In some cases, speech programs and RSP programs are housed in space that could not be utilized as regular classroom space; if that is the case at a particular site, a listing for Speech or RSP does not appear in this category. The "Specialist" designation in this category is intended to provide classroom space for four ESC positions at each site.

Current Enrollment: This category lists current enrollment at each of the sites. Also listed as a note in this category is any other use of classroom space at the site that is not reflected in the Modified Capacity category; the total number of classrooms utilized for these purposes is listed in parentheses in this note. In addition, a calculation representing the percent of current enrollment as compared to "Modified Capacity" is included here.

2009-2010 Projected Enrollment: This category represents the enrollment that was projected by Davis Demographics in the fall of 2007 for each of the sites. It should be noted that these projections include only students who reside within the particular attendance area for each of the schools; it does not include any transfer students from other attendance areas within the DMUSD.

Special Board Meeting of February 11, 2009

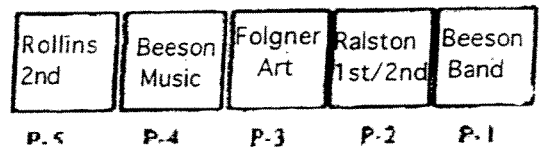
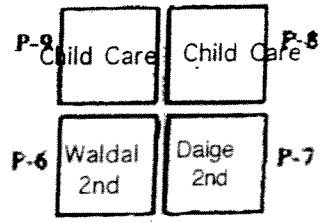
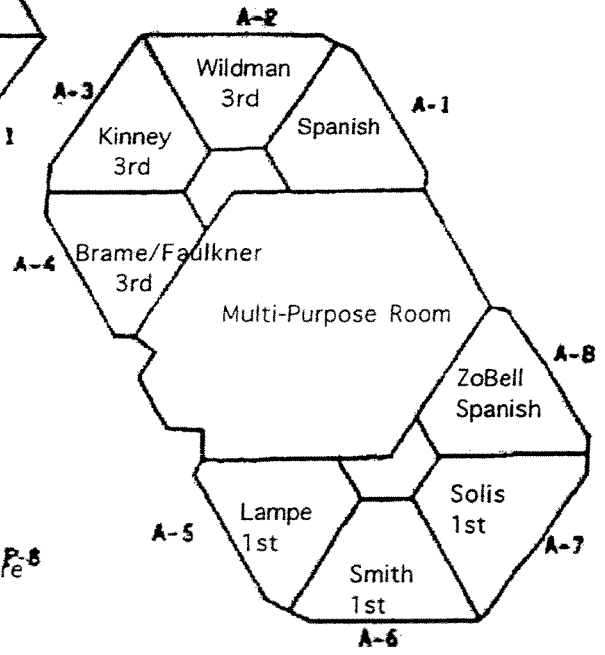
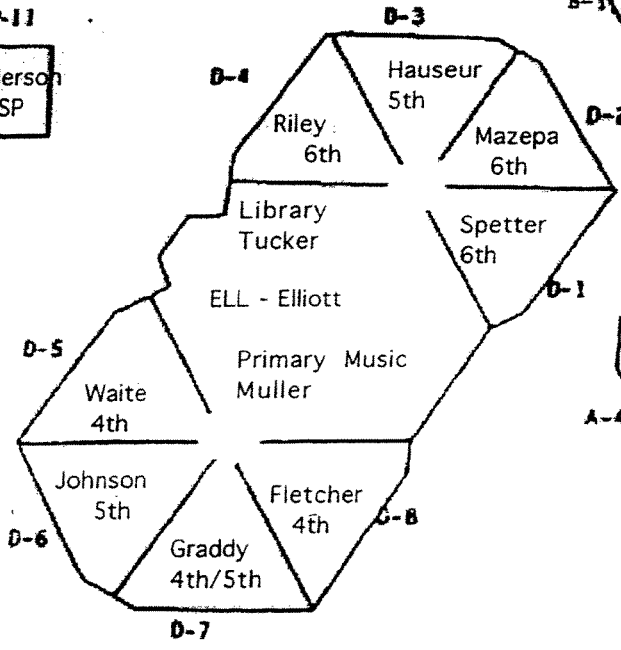
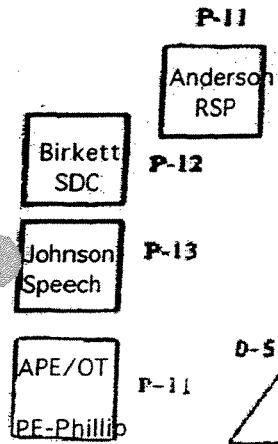
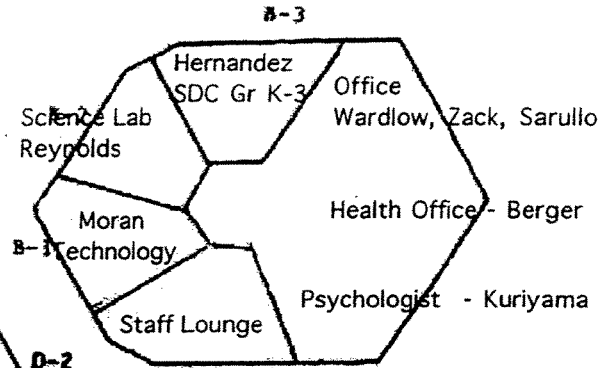
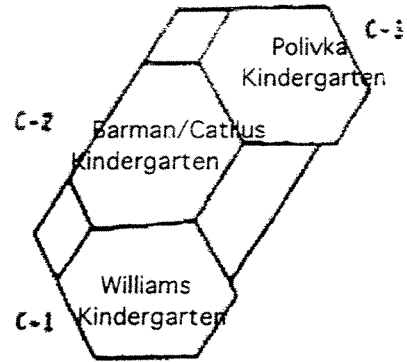


465	BARGER	3563
464	JONES	3564
461	6th Comp WORK lab ROOM	3591
461	NURSE	3567
461	OFFICE	3567
461	6TH	3561
461	OSICKI	3561

CARMEL DEL MAR SCHOOL
2008-2009

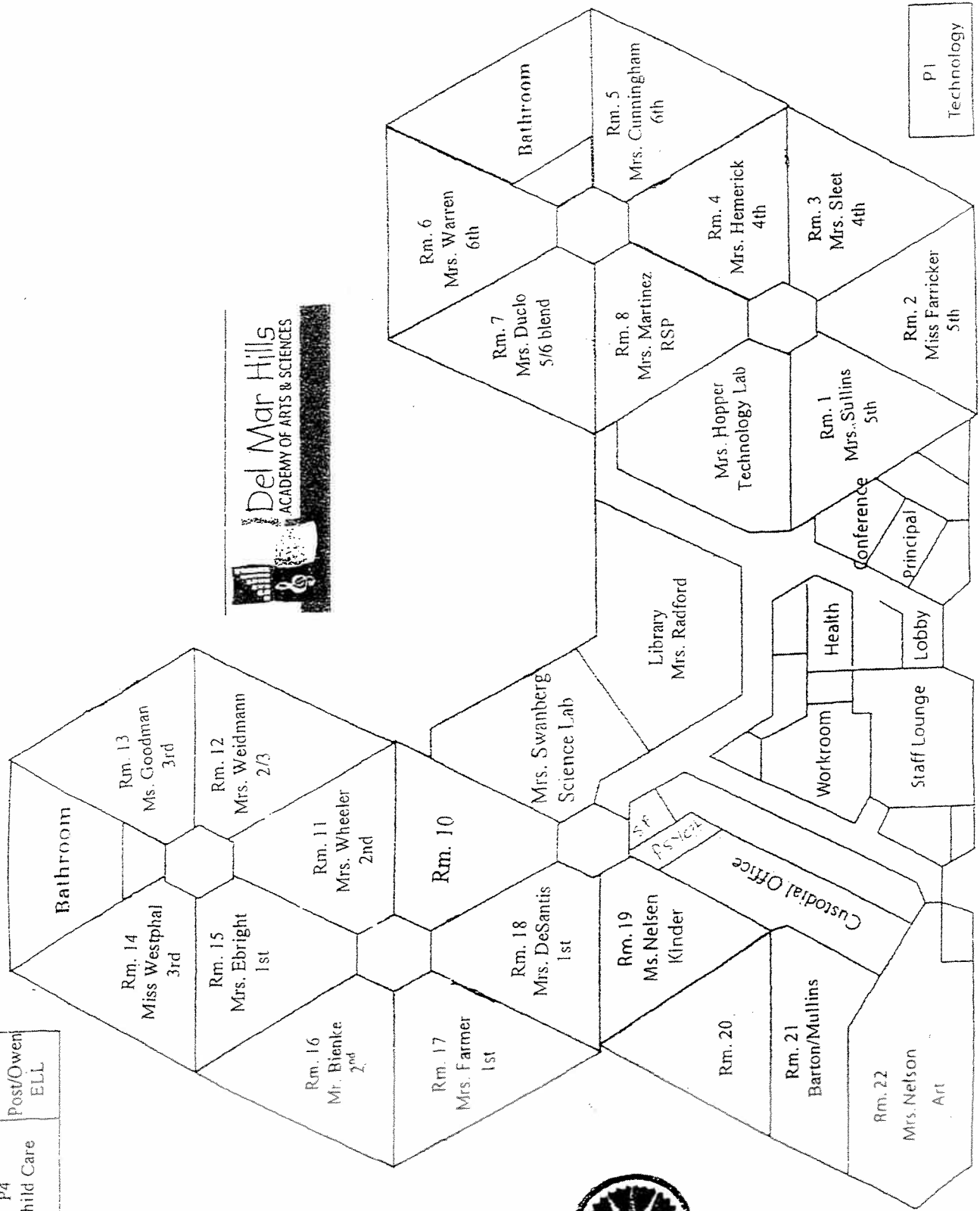
Del Mar Heights... a Global Village

2008-2009



Tech. P5	P3 Post/Owen ELL
P4 Child Care	

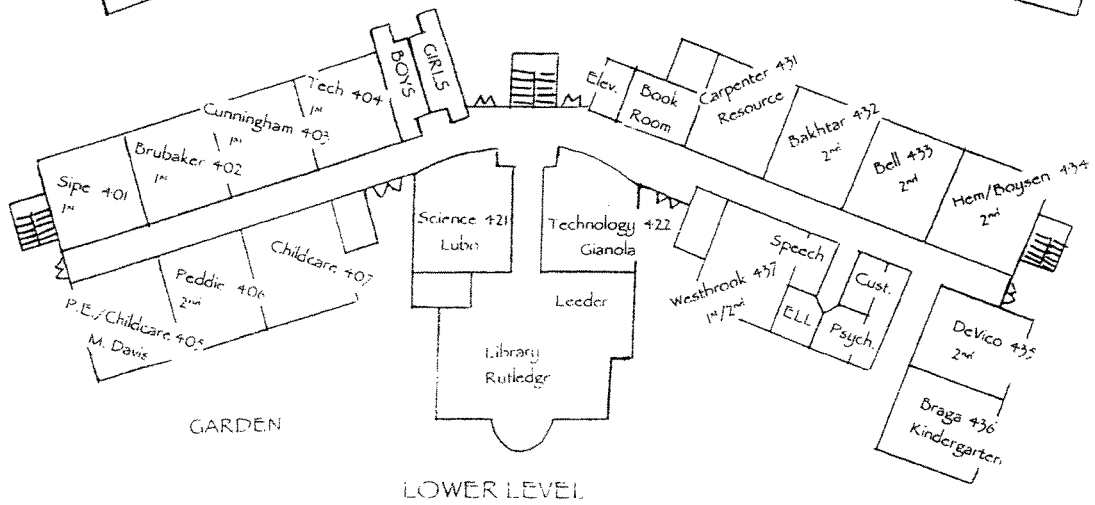
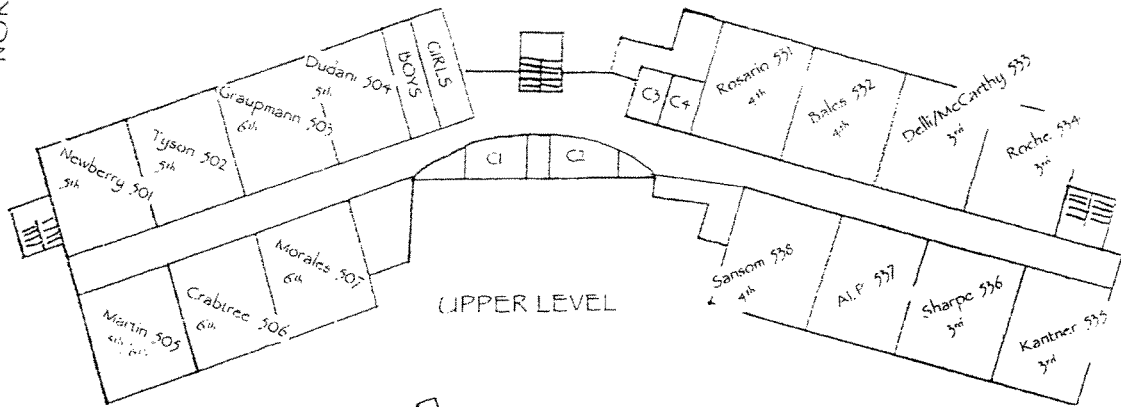
P6 Childcare
P7 Mrs. Allard Music



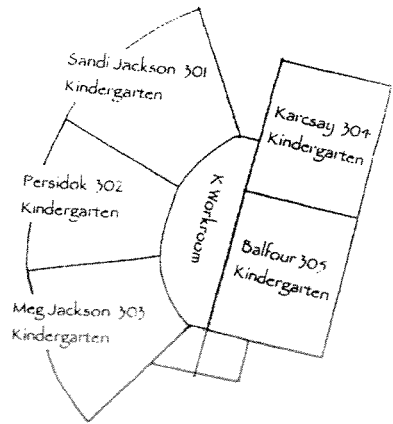
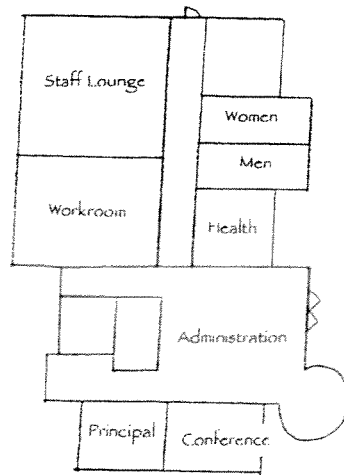
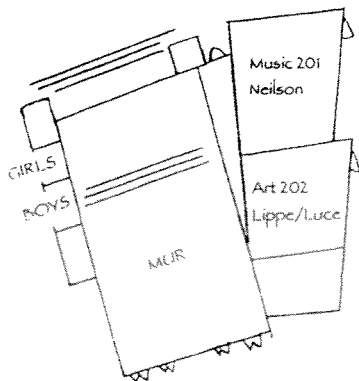
NORTH

HANDBALL COURTS

PLAY STRUCTURE



LUNCH AREA

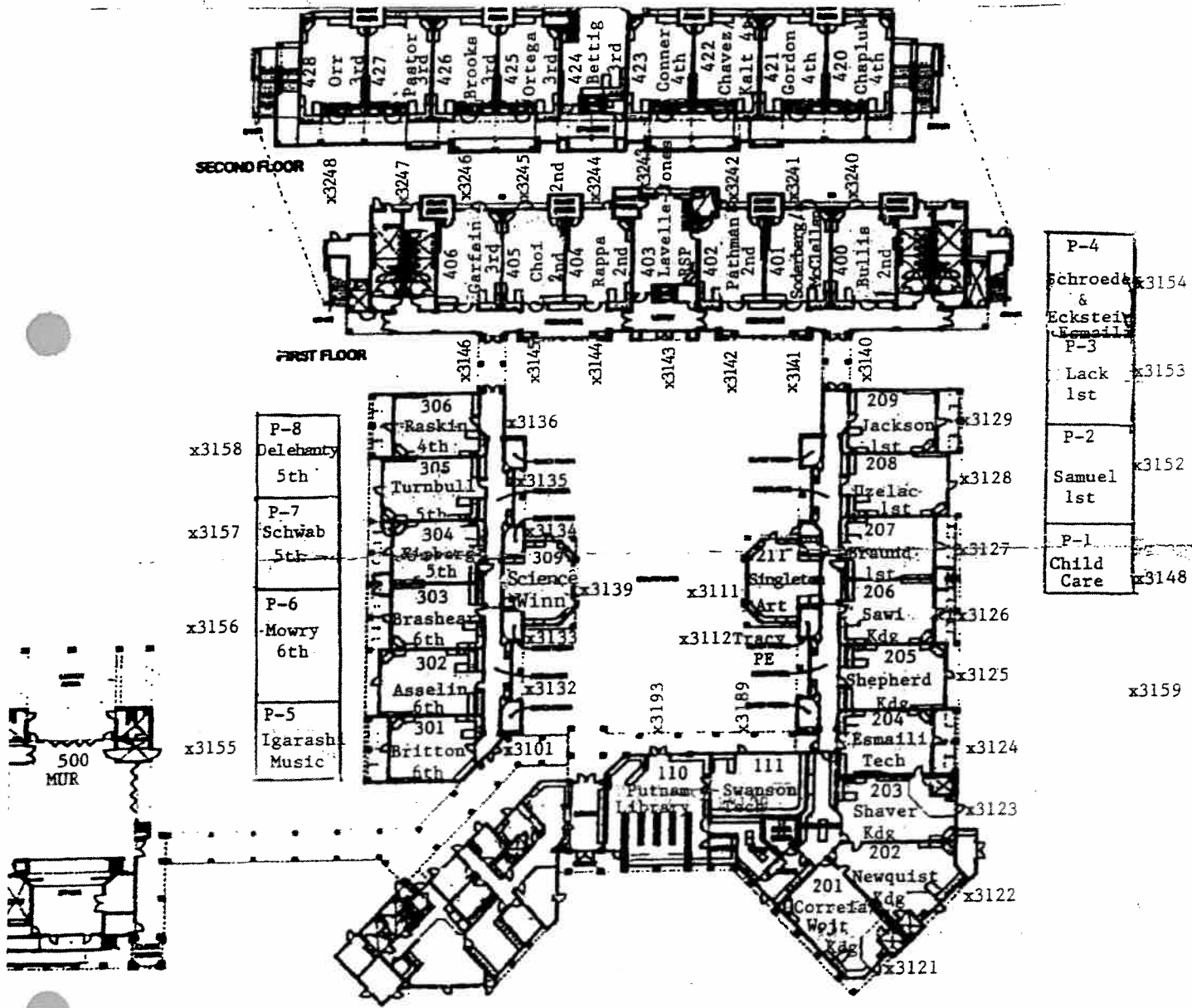


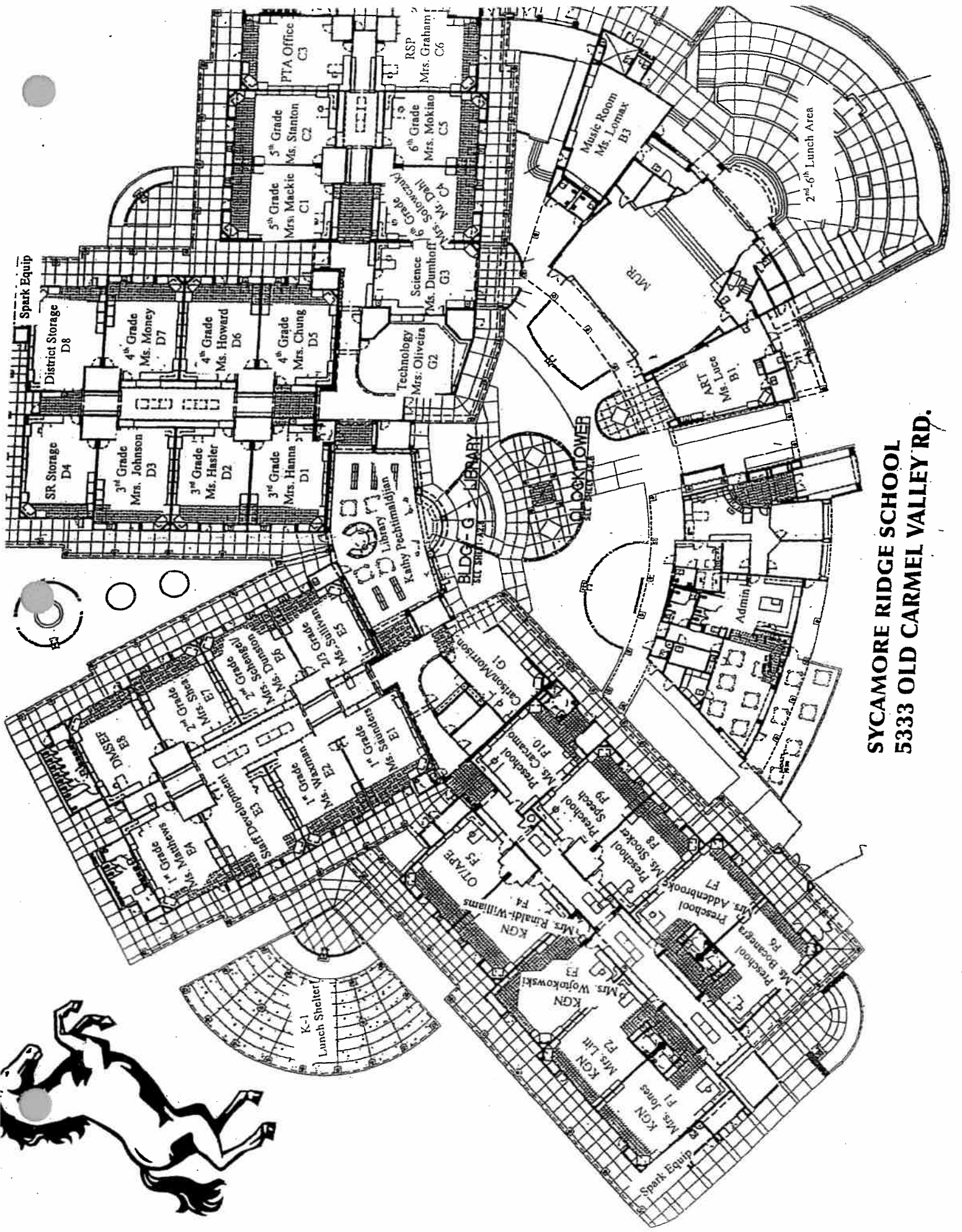
SAGE CANYON SCHOOL

SAGE CANYON SCHOOL

2059-2009

Peg (Principal)	x3199	Tina (RSP)	x3109
Ryan (Asst. Prin.)	x3182	Dina (Speech)	x3192
Becky (Office)	x3198	Rich (Psych.)	x3191
Marian (Office)	x3197	John (Custodian)	x3187
Susy (Health)	x3194	Conference Room	x3181
Lori (Nurse)	x3137	Workroom	x3196
		Lounge	x3190





**SYCAMORE RIDGE SCHOOL
5333 OLD CARMEL VALLEY RD.**



TORREY HILLS SCHOOL

P2
P1

K5
K4
K3

L1
L2
L3

M1
M2

N1
N2

J1
J2
J3
J4
J5
J6

H1
H2
H3
H4

Art
Music
Science
Math

Library
Lab

Administration Bldg.

C1
C2
C3
C4

E1
E2
E3
E4

D1
D2
D3
D4

P4
P3

P8
P7
P6
P5

DEL MAR UNION SCHOOL DISTRICT
 SCHOOL SQUARE FOOTAGE AND ACREAGE
 as of September 2008

<u>School</u>	<u>Square Feet</u> (Includes Portables)	<u>Acreage</u>	<u>Joint Use</u>	<u>Year Open</u>
Ashley Falls ¹ (4 portables)	65,226	4.18	4.02	1998
Carmel Del Mar ² (6 portables)	46,730	3.02	Acreage unknown	1991
Del Mar Heights (13 portables)	52,406	10.85	N/A	1959
Del Mar Hills (7 portables)	40,985	8.92	N/A	1969
Ocean Air (0 portables)	77,106	6.07	6.25	2007
Sage Canyon (10 portables)	67,314	5.3	4.7	2000
Torrey Hills (8 portables)	66,273	14.41	N/A	2002
Sycamore Ridge (0 portables)	64,704	11	N/A	2005
Totals	480,744	63.75		

¹ Does not include 7.894 acres for park and parking lot

² Does not include acreage for park or parking lot

<p>Facility, Age, Renovation/Modernization Schedule</p>

Site	Year Built	Year Eligible to be Remodeled
District Office	1948	
Del Mar Heights	1965	Remodeled in 2000
Del Mar Hills Academy	1974	Remodeled in 2001
Carmel Del Mar	1992	2017
Ashley Falls	1998	2023
Sage Canyon	2000	2025
Torrey Hills	2002	2027
Sycamore Ridge	2005	2030
Ocean Air	2007	2032