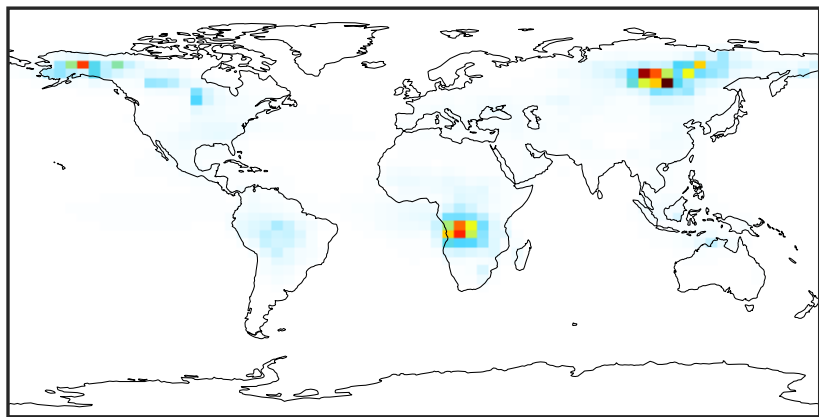


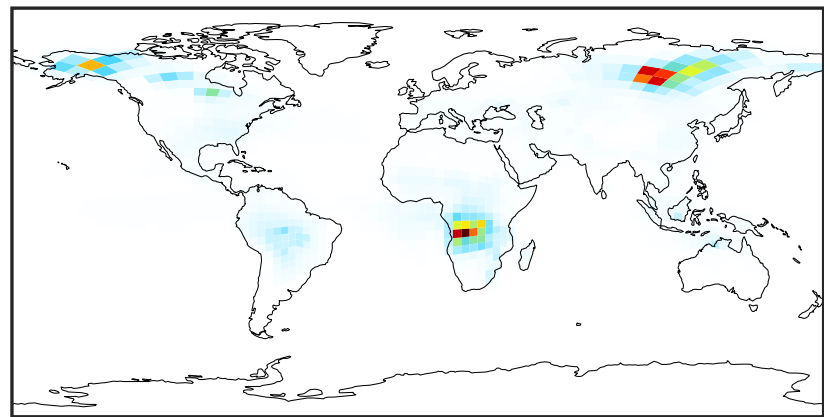
SpeciesConcVV_ACTA

gcc-4x5-1Mon-14.2.0-alpha.20 (Ref)
4.0x5.0



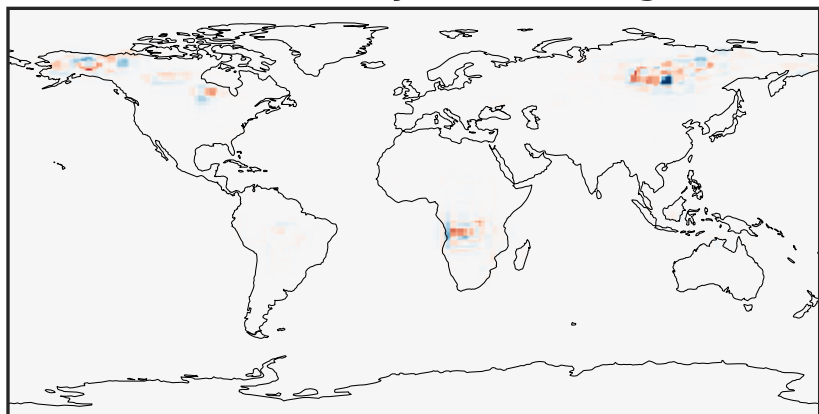
0.00 3.15 6.30 9.45 12.59
ppb

gchp-c24-1Mon-14.2.0-alpha.20 (Dev)
c24



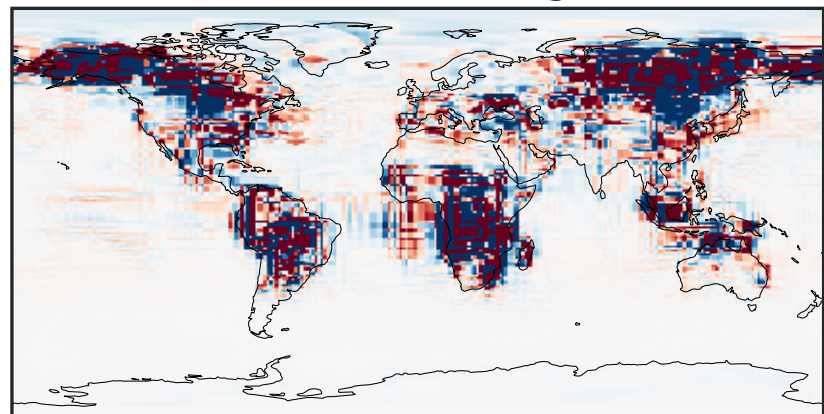
0.00 3.15 6.30 9.45 12.59
ppb

Difference (1x1.25)
Dev - Ref, Dynamic Range



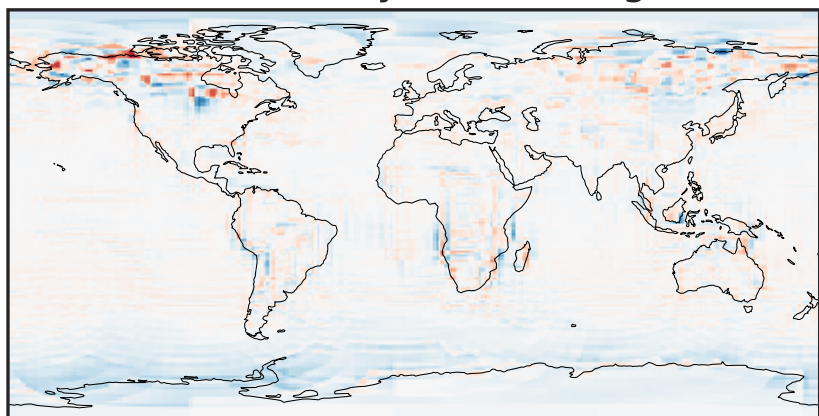
-8.45 -4.22 0.00 4.22 8.45
ppb

Difference (1x1.25)
Dev - Ref, Restricted Range [5%,95%]



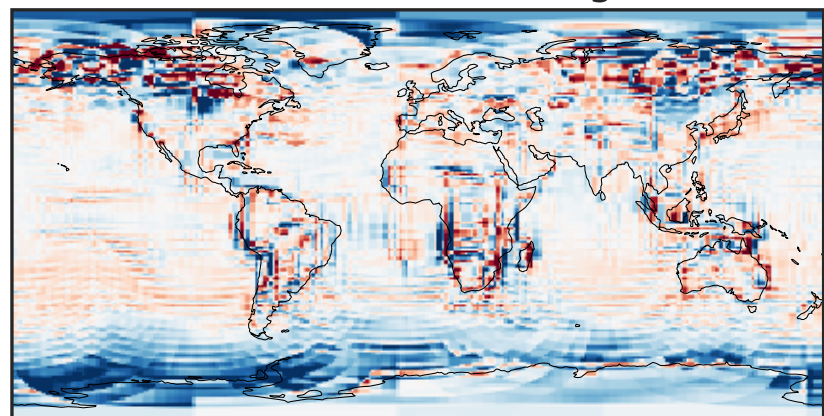
-0.02 0.00 0.02
ppb

Ratio (1x1.25)
Dev/Ref, Dynamic Range



1e-01 1 10
unitless

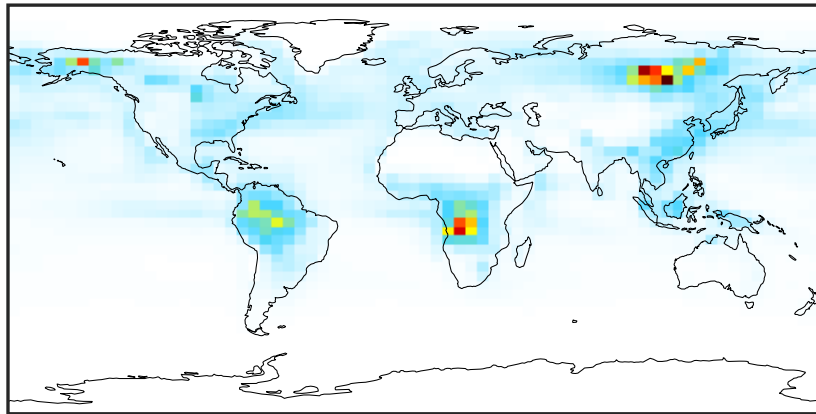
Ratio (1x1.25)
Dev/Ref, Fixed Range



0.50 0.75 1.00 1.50 2.00
unitless

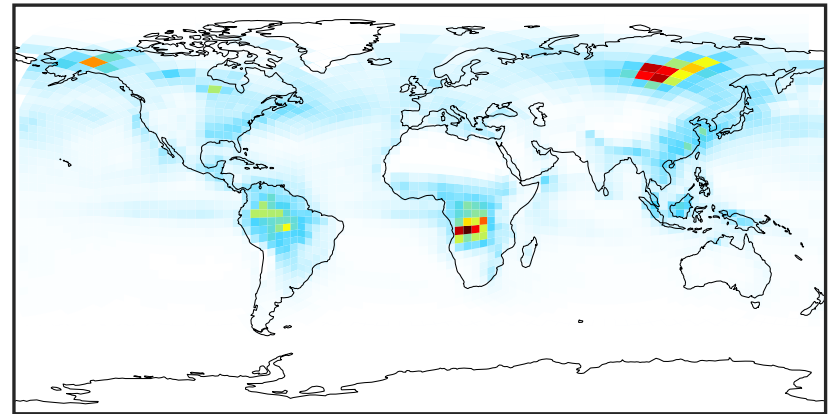
SpeciesConcVV_ALD2

gcc-4x5-1Mon-14.2.0-alpha.20 (Ref)
4.0x5.0



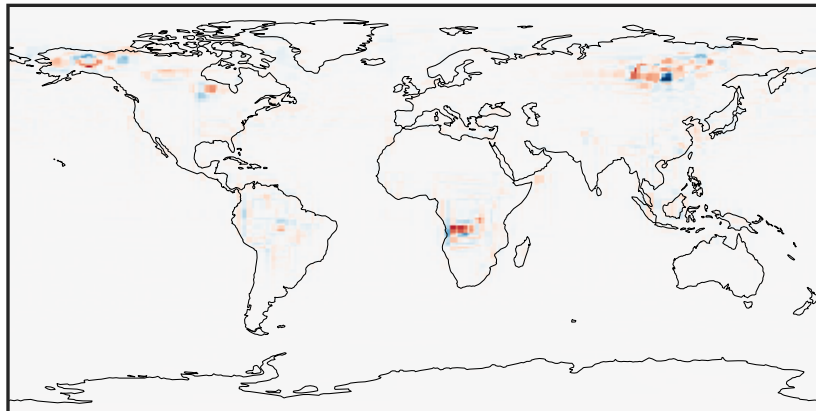
0.003 1.541 3.081 4.622 6.166
ppb

gchp-c24-1Mon-14.2.0-alpha.20 (Dev)
c24



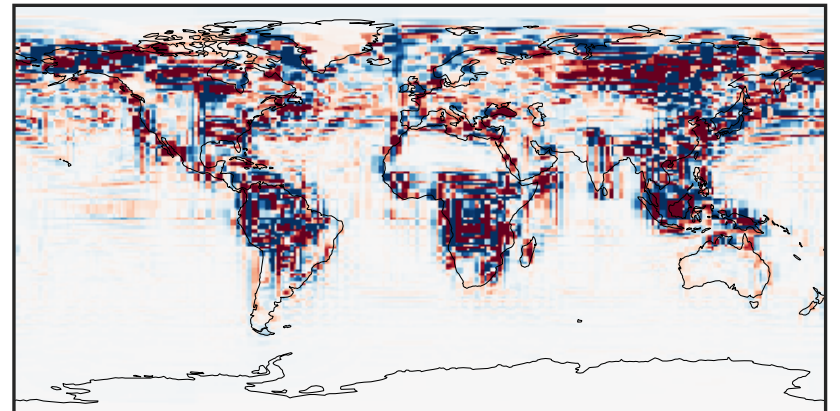
0.003 1.541 3.081 4.622 6.166
ppb

Difference (1x1.25)
Dev - Ref, Dynamic Range



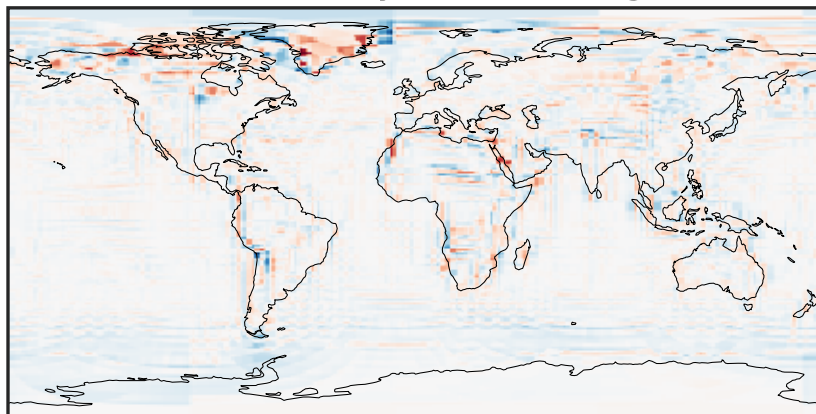
-3.553 -1.777 0.000 1.777 3.553
ppb

Difference (1x1.25)
Dev - Ref, Restricted Range [5%,95%]



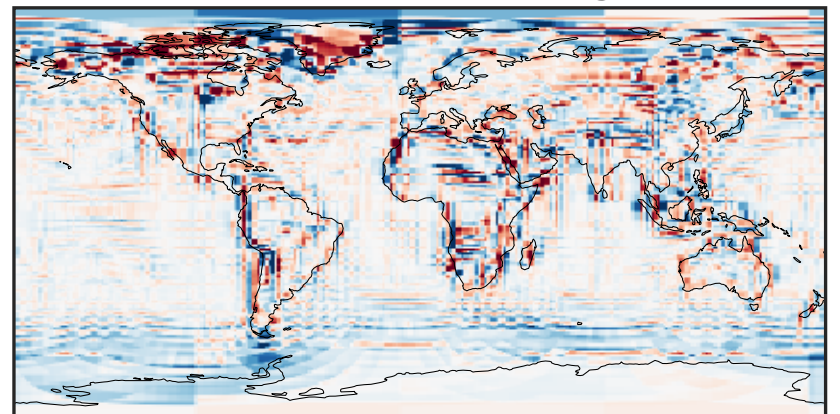
-0.0985 -0.0492 0.0000 0.0492 0.0985
ppb

Ratio (1x1.25)
Dev/Ref, Dynamic Range



0.109 0.555 1.000 5.074 9.148
unitless

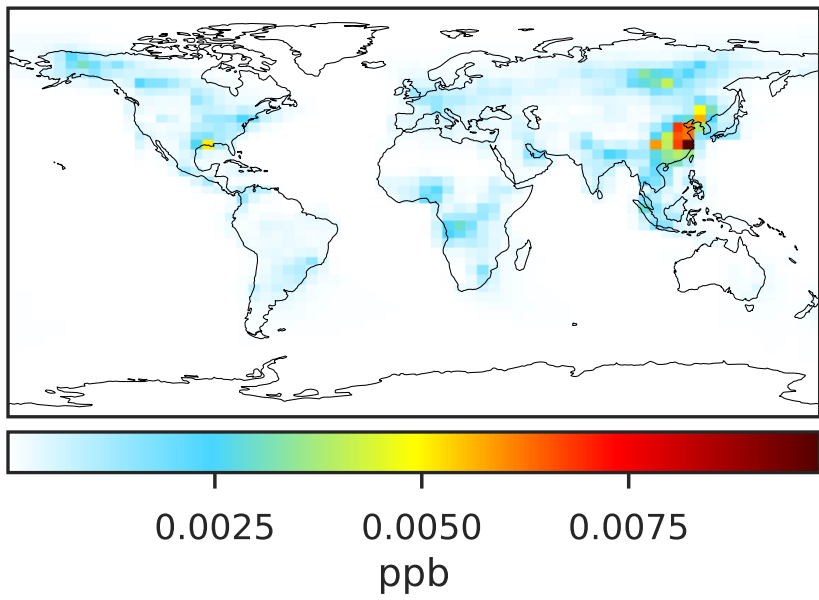
Ratio (1x1.25)
Dev/Ref, Fixed Range



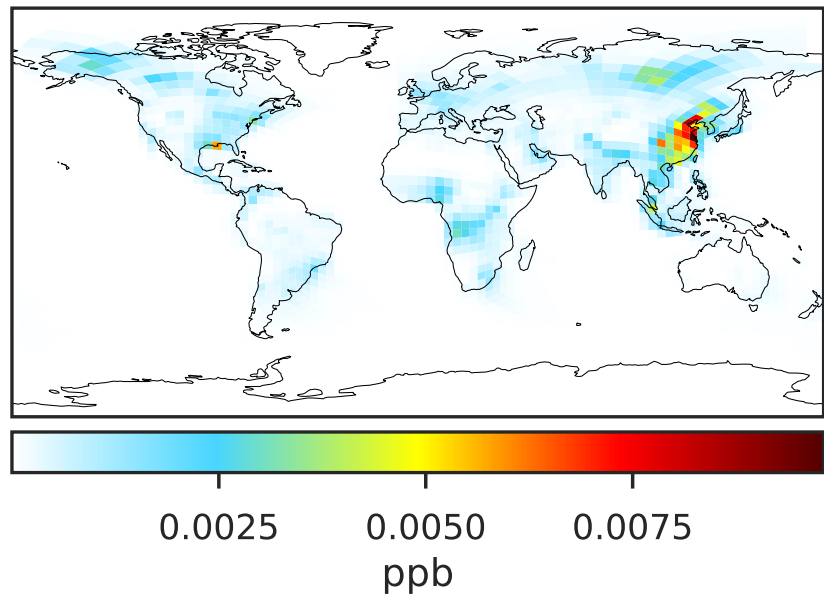
0.50 0.75 1.00 1.50 2.00
unitless

SpeciesConcVV_BALD

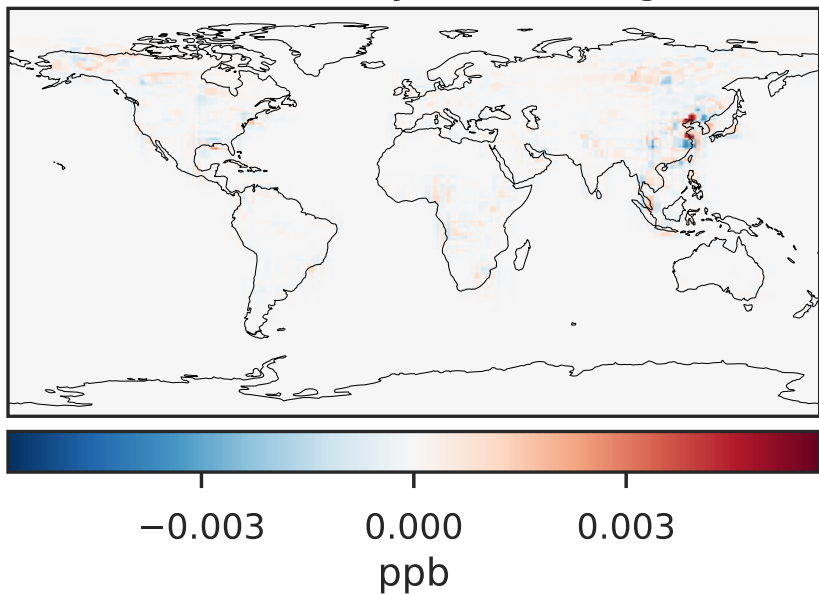
gcc-4x5-1Mon-14.2.0-alpha.20 (Ref)
4.0x5.0



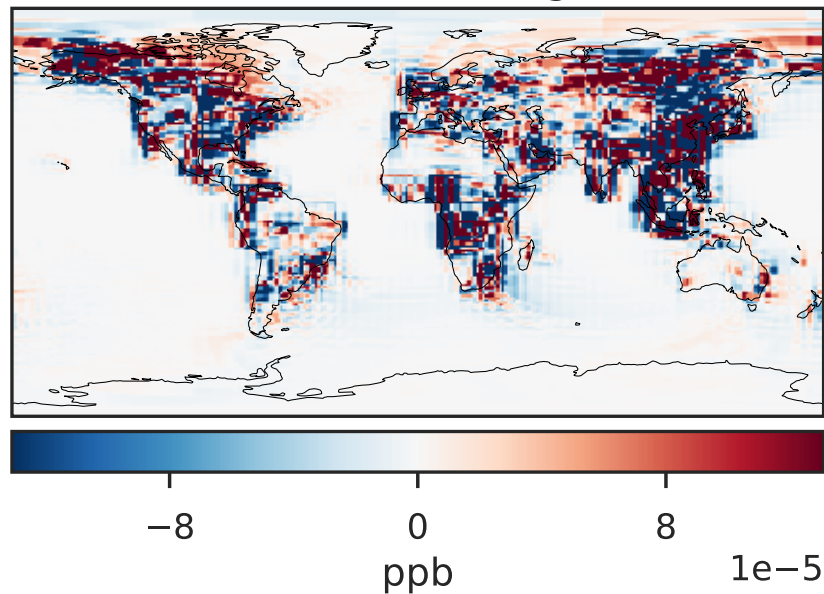
gchp-c24-1Mon-14.2.0-alpha.20 (Dev)
c24



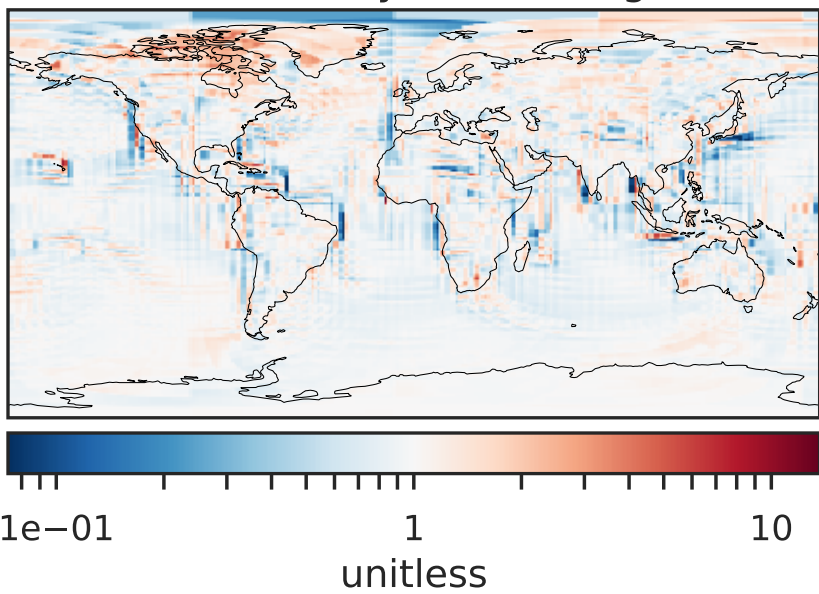
Difference (1x1.25)
Dev - Ref, Dynamic Range



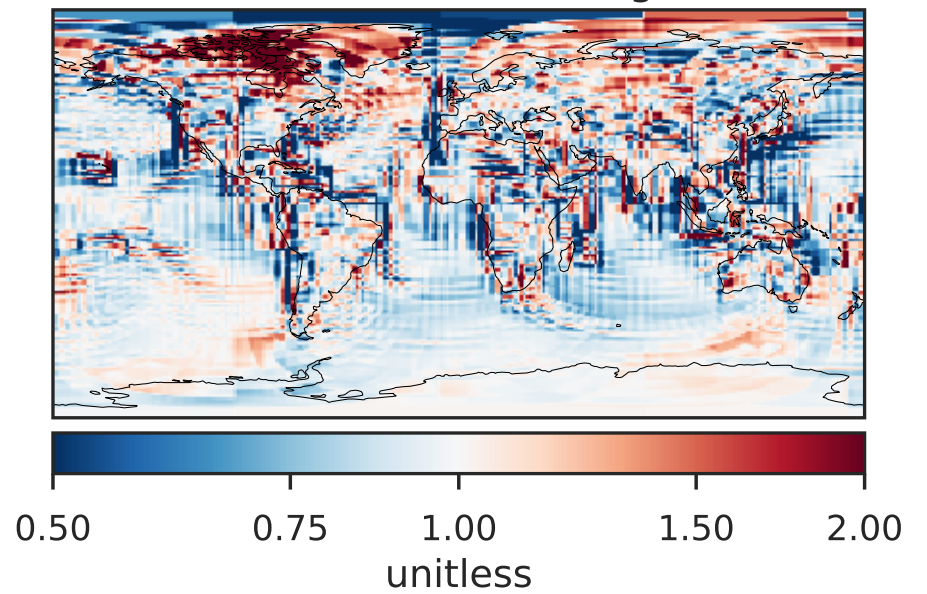
Difference (1x1.25)
Dev - Ref, Restricted Range [5%,95%]



Ratio (1x1.25)
Dev/Ref, Dynamic Range

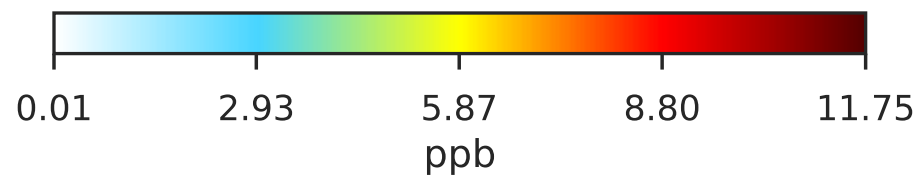
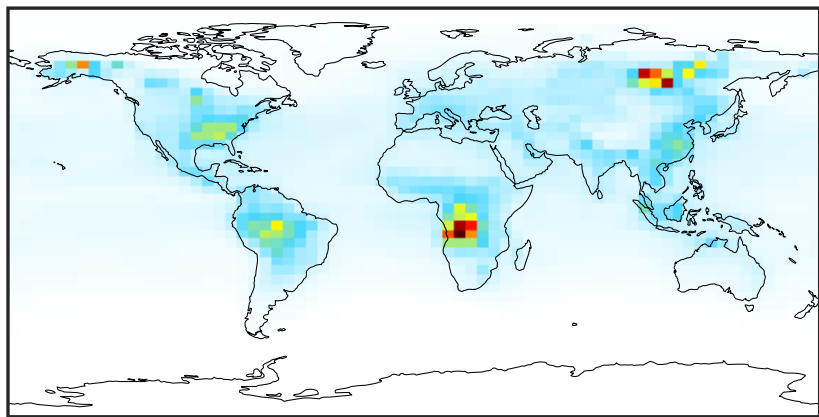


Ratio (1x1.25)
Dev/Ref, Fixed Range

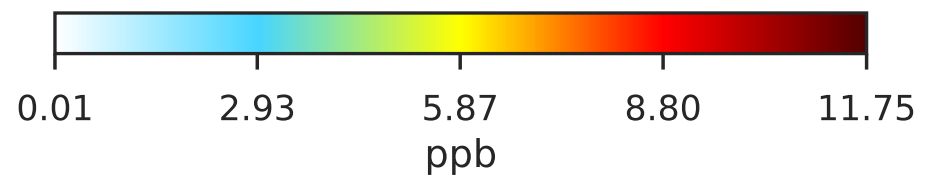
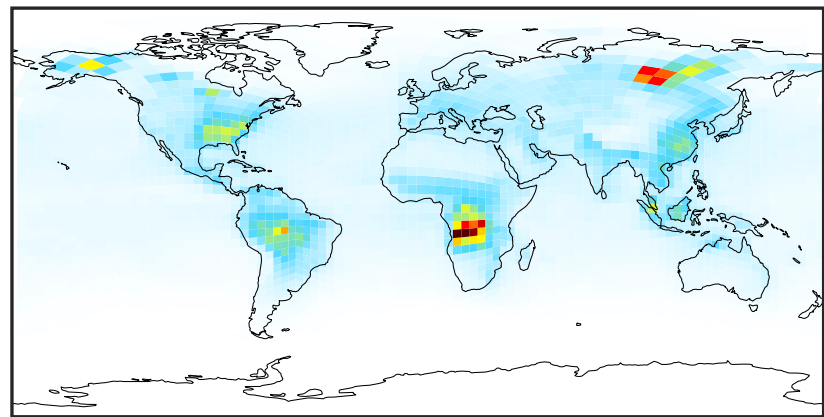


SpeciesConcVV_CH20

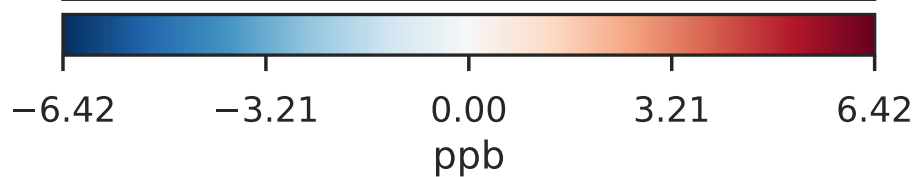
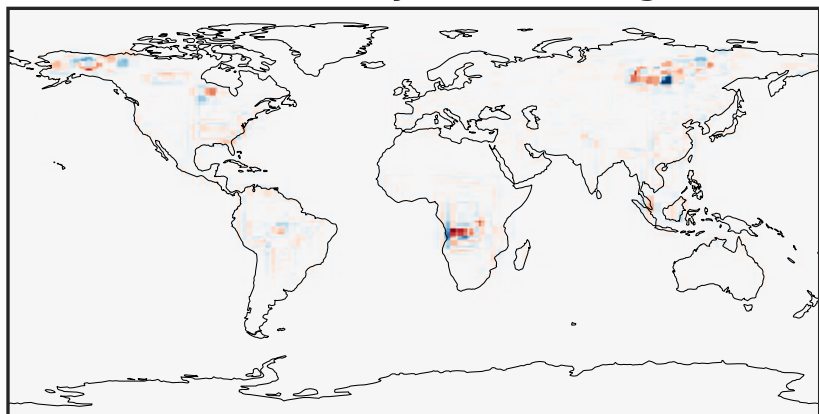
gcc-4x5-1Mon-14.2.0-alpha.20 (Ref)
4.0x5.0



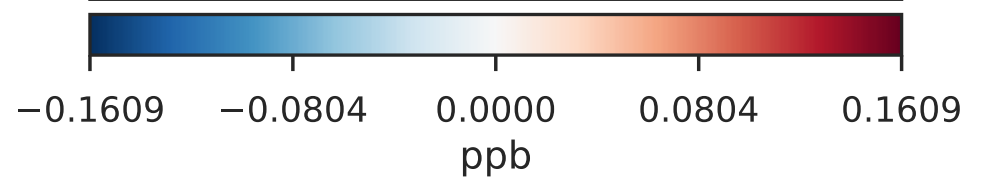
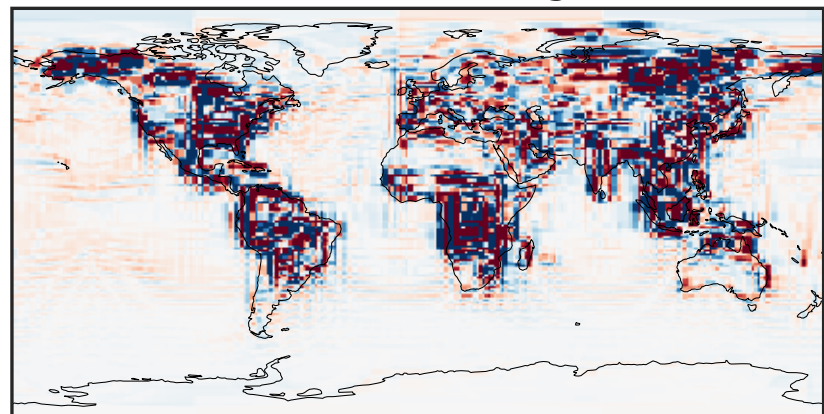
gchp-c24-1Mon-14.2.0-alpha.20 (Dev)
c24



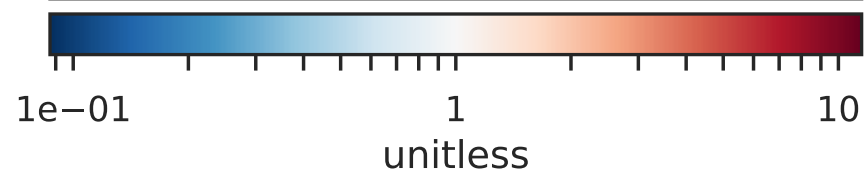
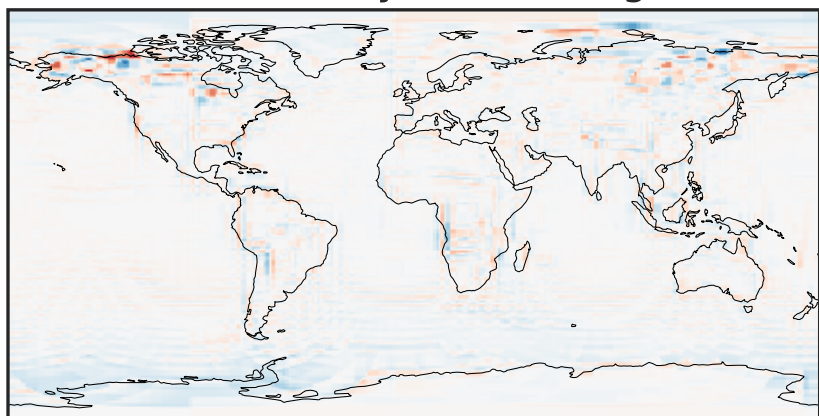
Difference (1x1.25)
Dev - Ref, Dynamic Range



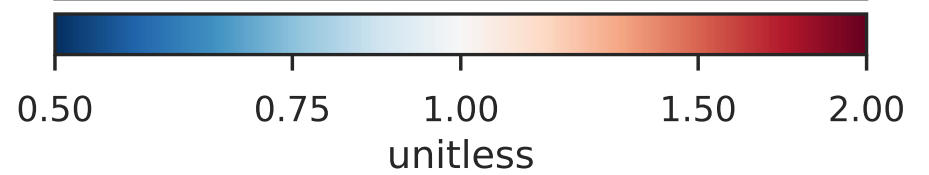
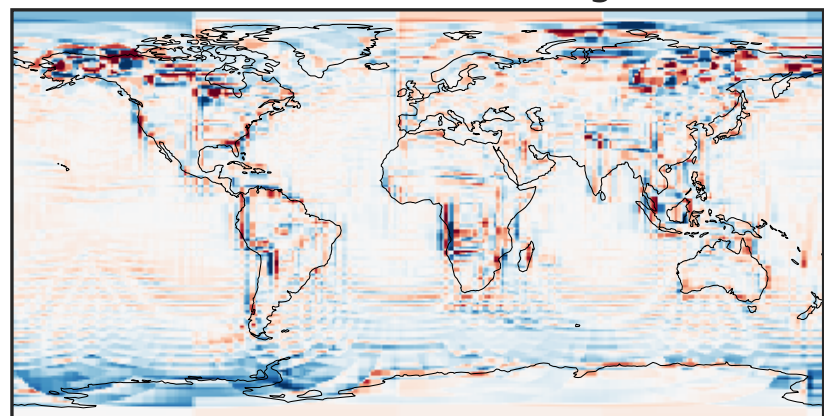
Difference (1x1.25)
Dev - Ref, Restricted Range [5%,95%]



Ratio (1x1.25)
Dev/Ref, Dynamic Range

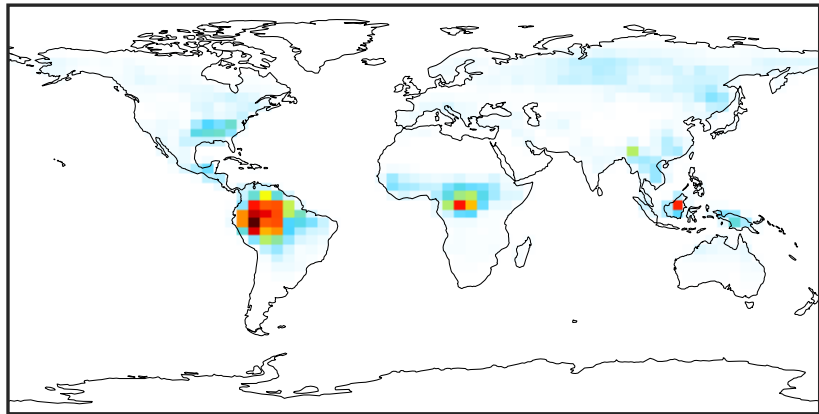


Ratio (1x1.25)
Dev/Ref, Fixed Range



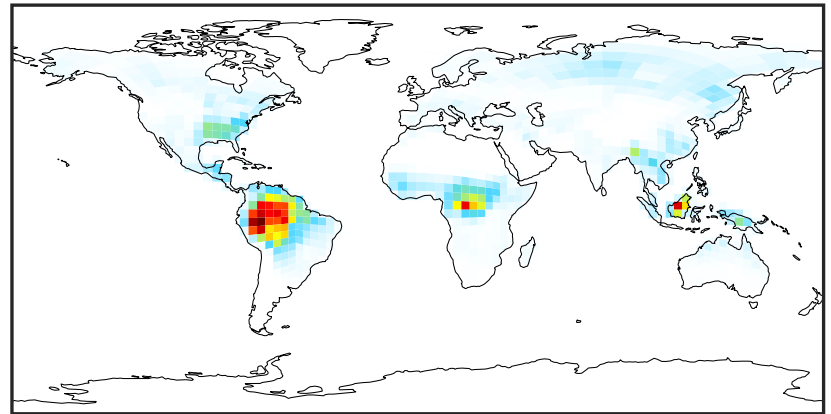
SpeciesConcVV_HPALDs

gcc-4x5-1Mon-14.2.0-alpha.20 (Ref)
4.0x5.0



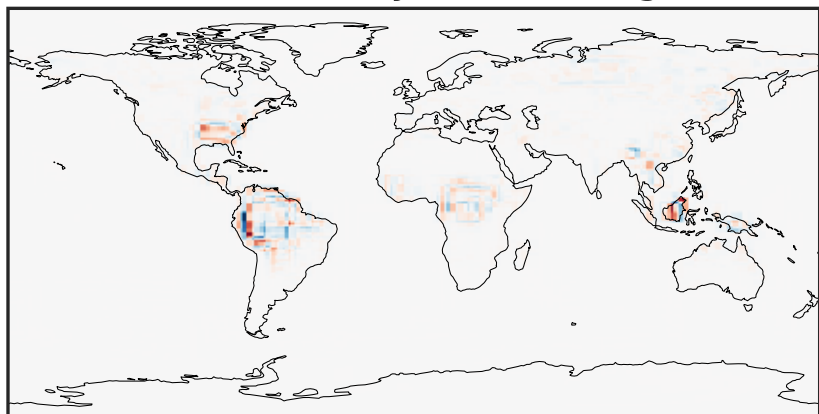
0.0000 0.0761 0.1521 0.2282 0.3042
ppb

gchp-c24-1Mon-14.2.0-alpha.20 (Dev)
c24



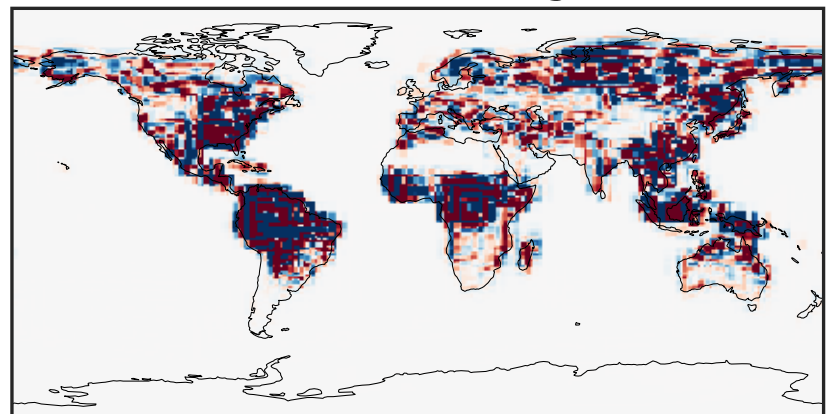
0.0000 0.0761 0.1521 0.2282 0.3042
ppb

Difference (1x1.25)
Dev - Ref, Dynamic Range



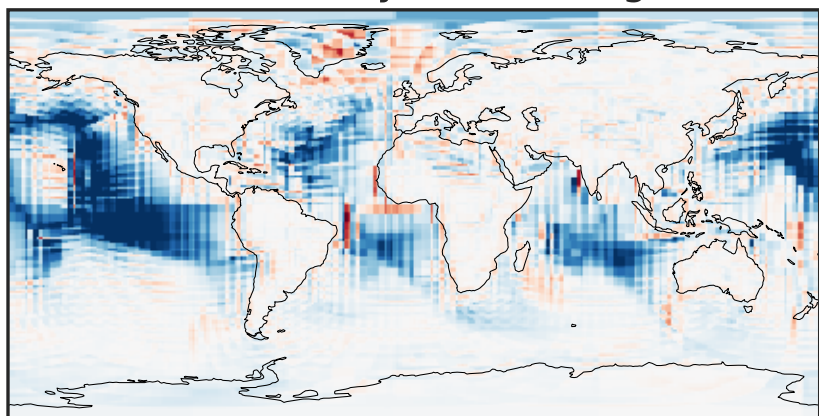
-0.1294 -0.0647 0.0000 0.0647 0.1294
ppb

Difference (1x1.25)
Dev - Ref, Restricted Range [5%,95%]



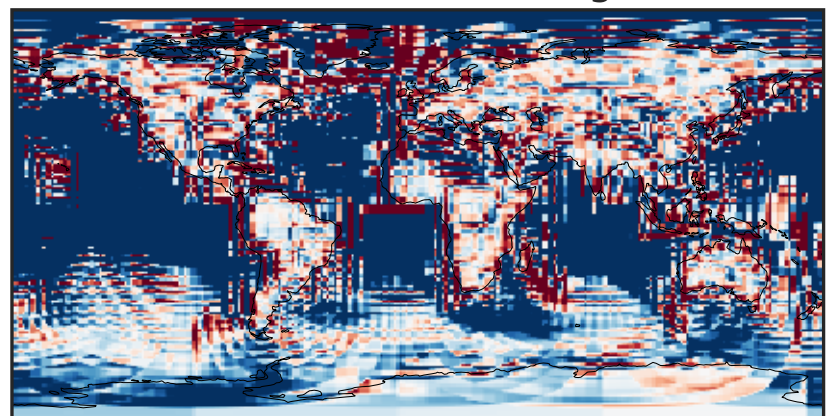
-0.0015 0.0000 0.0015
ppb

Ratio (1x1.25)
Dev/Ref, Dynamic Range



unitless

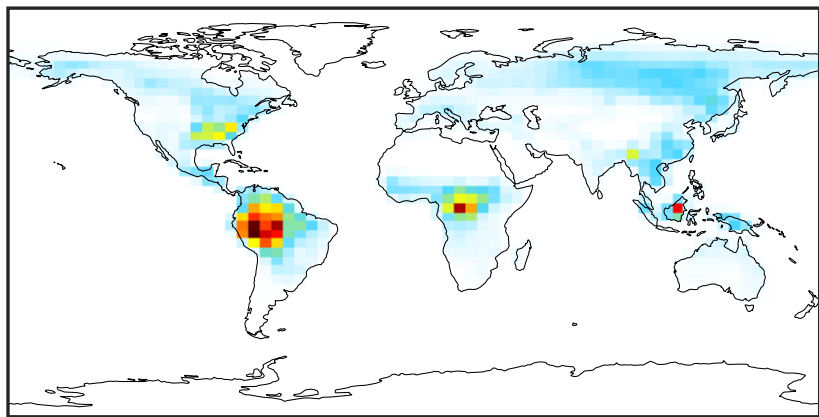
Ratio (1x1.25)
Dev/Ref, Fixed Range



0.50 0.75 1.00 1.50 2.00
unitless

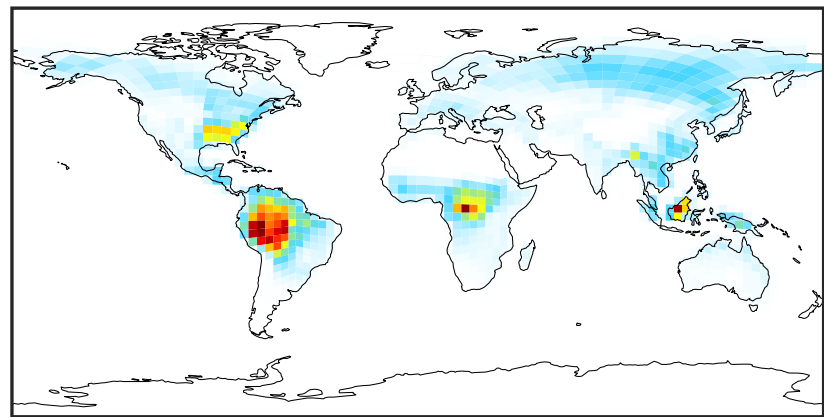
SpeciesConcVV_MACR

gcc-4x5-1Mon-14.2.0-alpha.20 (Ref)
4.0x5.0



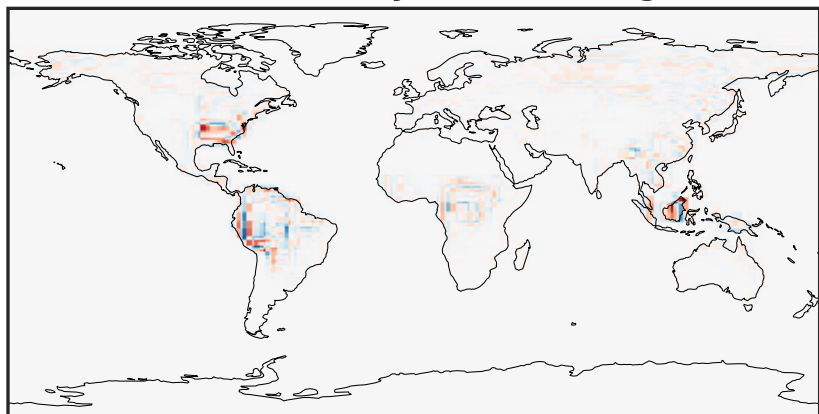
0.000 0.285 0.571 0.856 1.141
ppb

gchp-c24-1Mon-14.2.0-alpha.20 (Dev)
c24



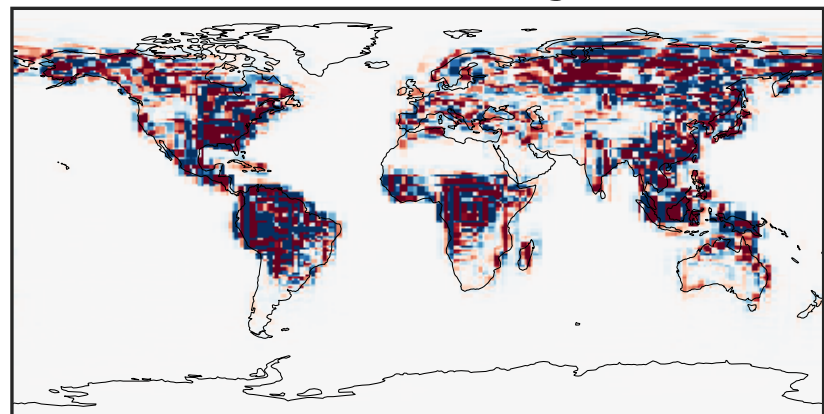
0.000 0.285 0.571 0.856 1.141
ppb

Difference (1x1.25)
Dev - Ref, Dynamic Range



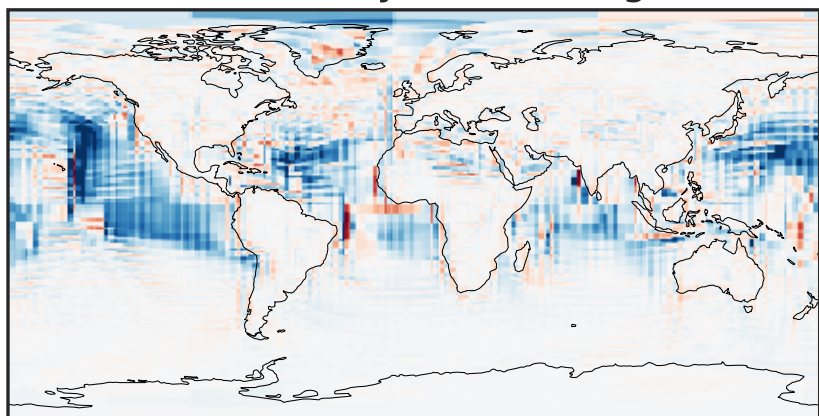
-0.4872 -0.2436 0.0000 0.2436 0.4872
ppb

Difference (1x1.25)
Dev - Ref, Restricted Range [5%,95%]



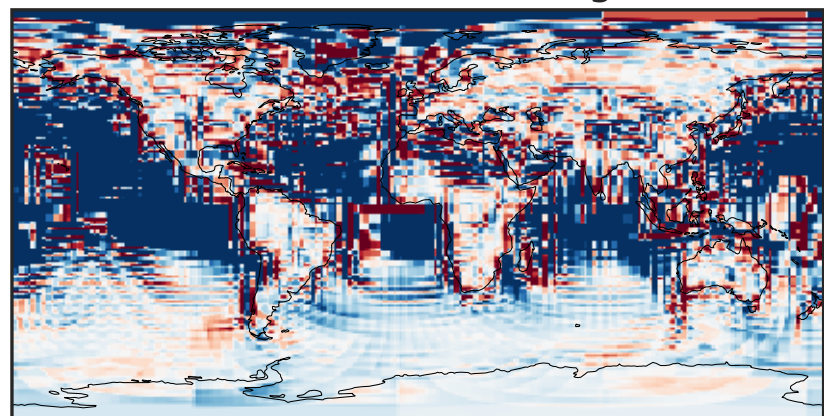
-0.01 0.00 0.01
ppb

Ratio (1x1.25)
Dev/Ref, Dynamic Range



1e-02 1e-01 1 10 100
unitless

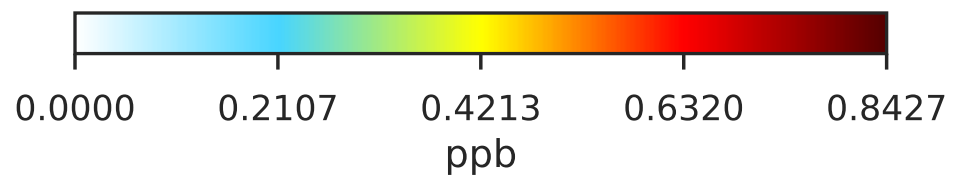
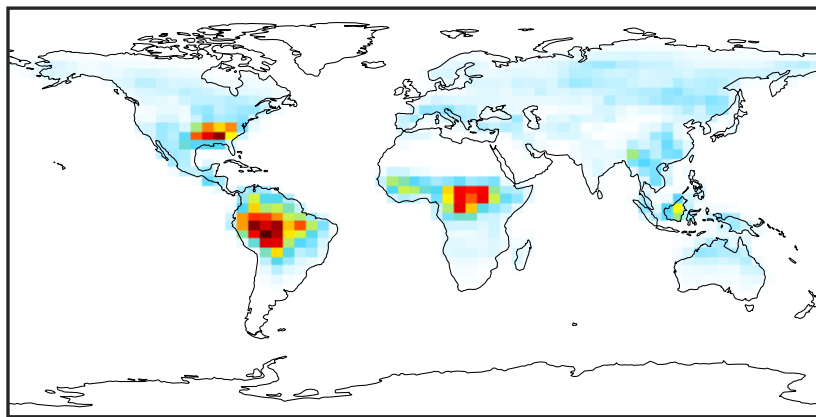
Ratio (1x1.25)
Dev/Ref, Fixed Range



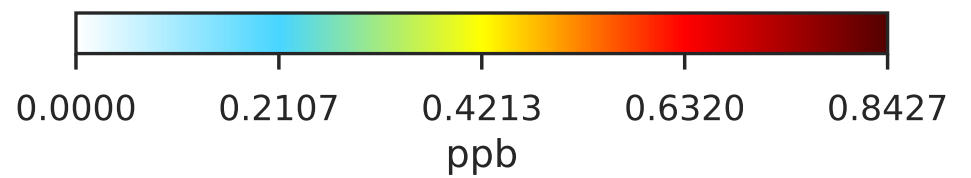
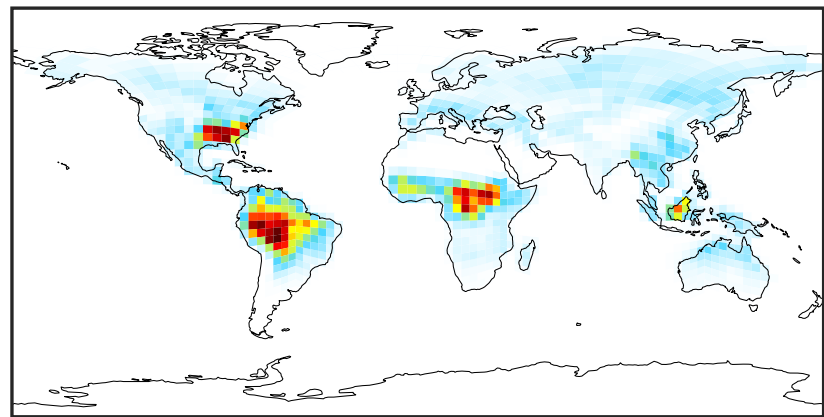
0.50 0.75 1.00 1.50 2.00
unitless

SpeciesConcVV_IEPOX

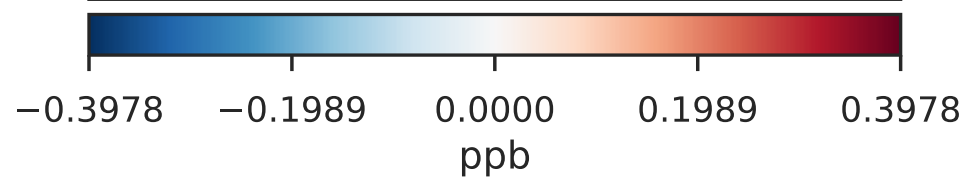
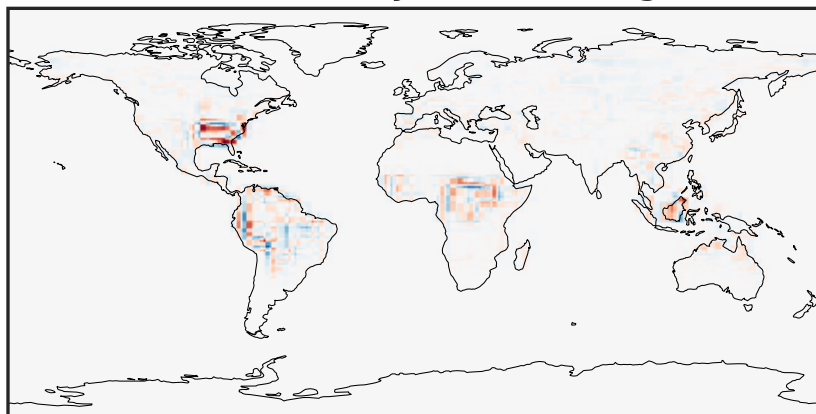
gcc-4x5-1Mon-14.2.0-alpha.20 (Ref)
4.0x5.0



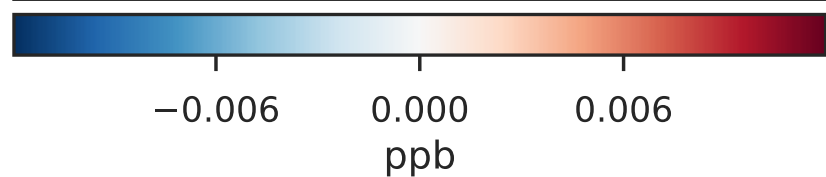
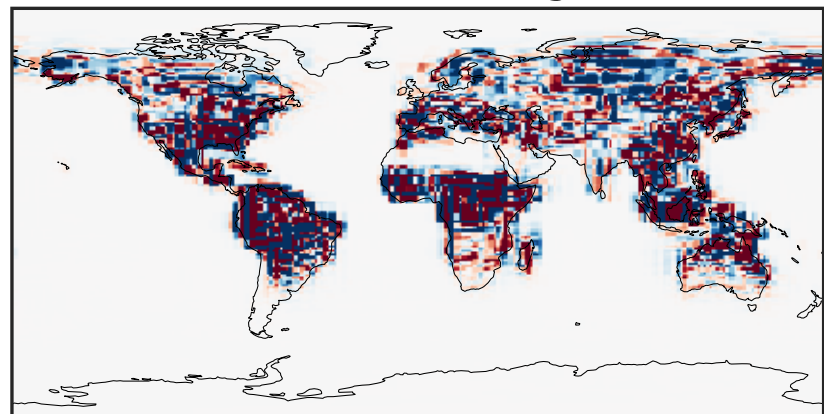
gchp-c24-1Mon-14.2.0-alpha.20 (Dev)
c24



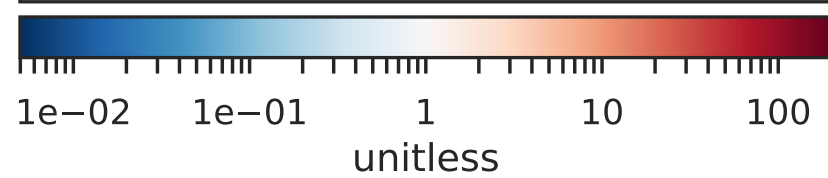
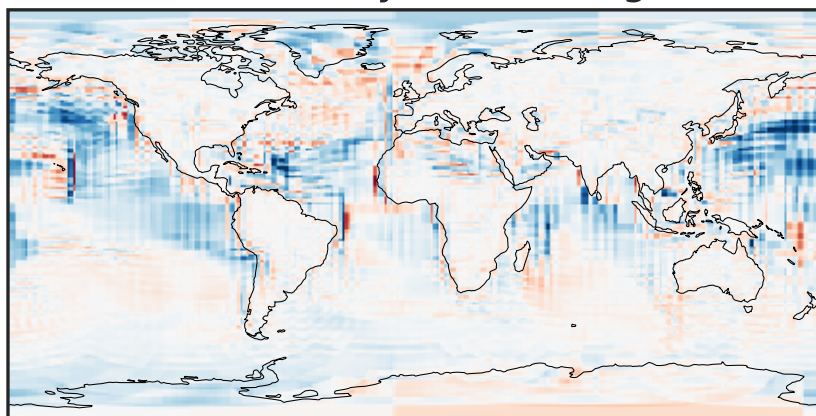
Difference (1x1.25)
Dev - Ref, Dynamic Range



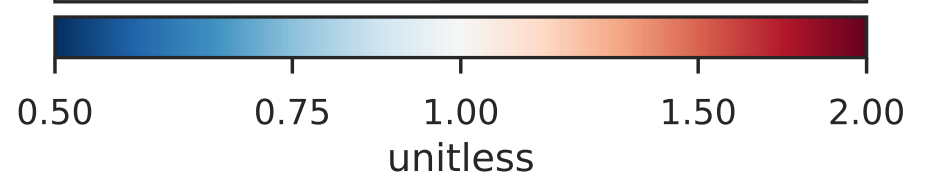
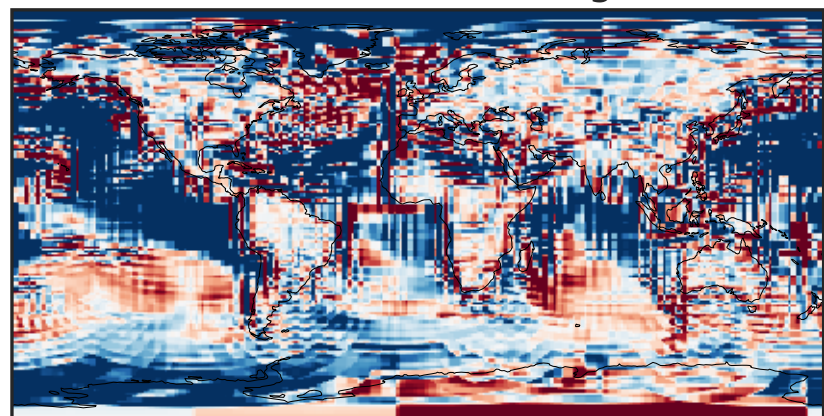
Difference (1x1.25)
Dev - Ref, Restricted Range [5%,95%]



Ratio (1x1.25)
Dev/Ref, Dynamic Range

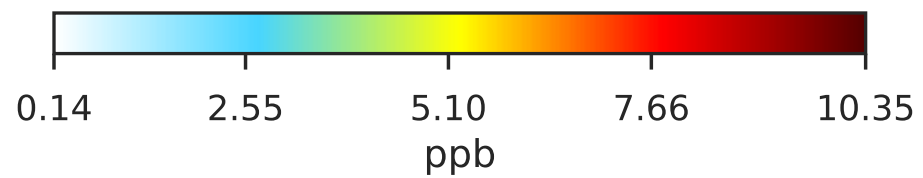
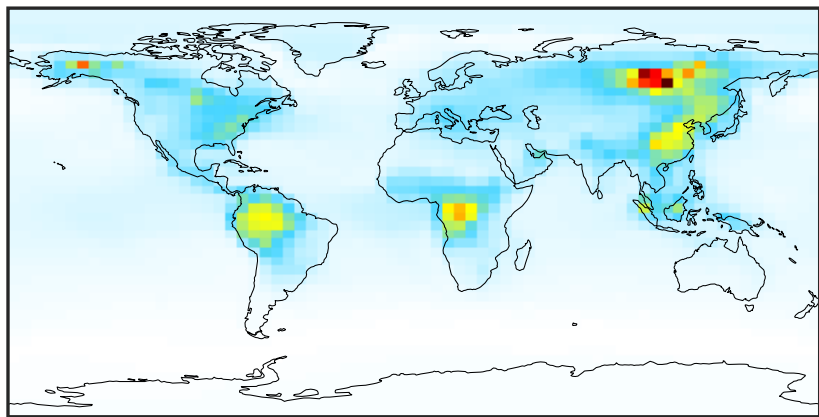


Ratio (1x1.25)
Dev/Ref, Fixed Range

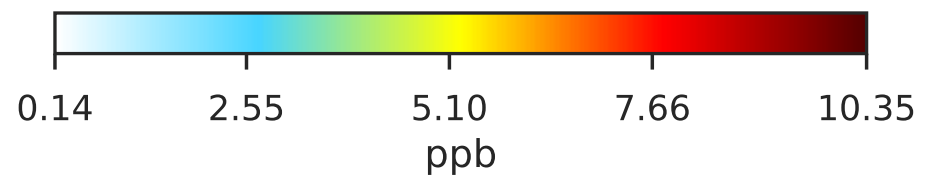
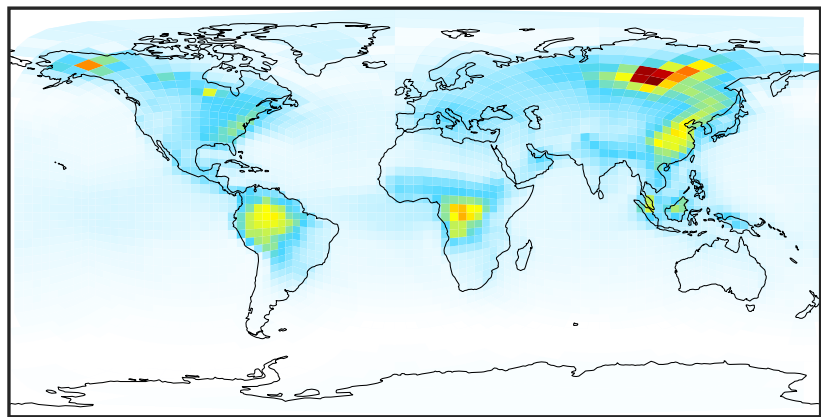


SpeciesConcVV_ACET

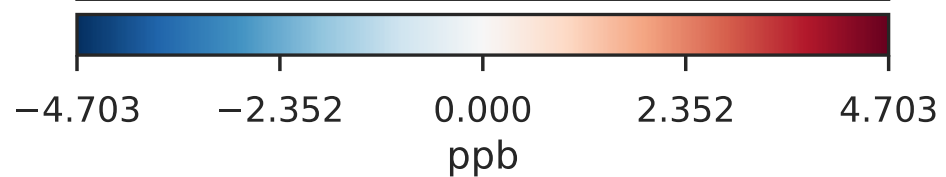
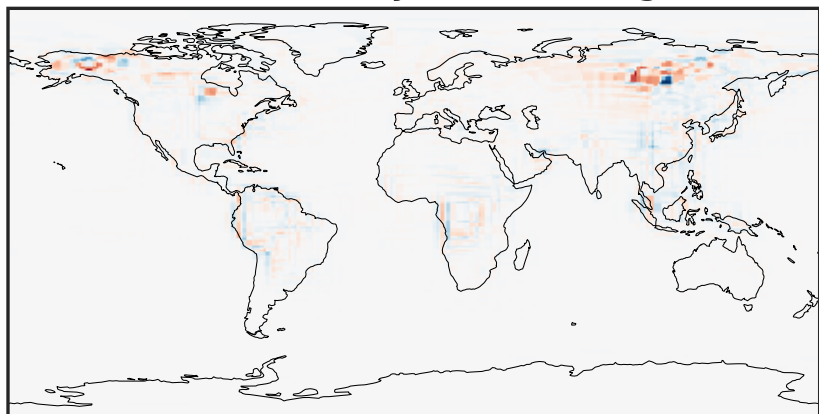
gcc-4x5-1Mon-14.2.0-alpha.20 (Ref)
4.0x5.0



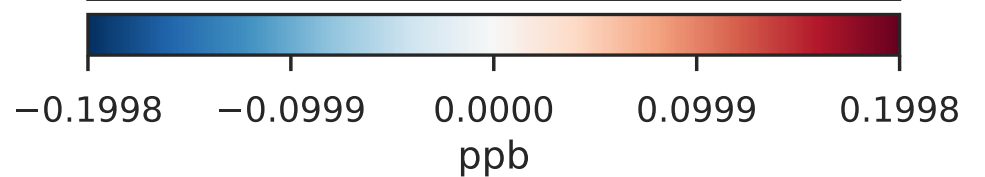
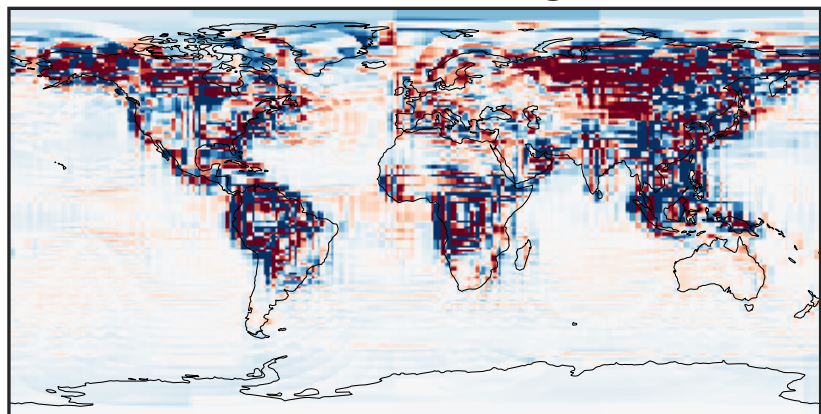
gchp-c24-1Mon-14.2.0-alpha.20 (Dev)
c24



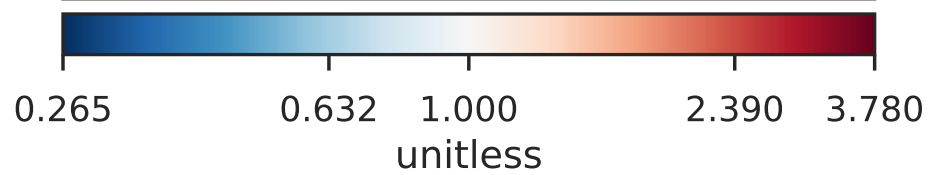
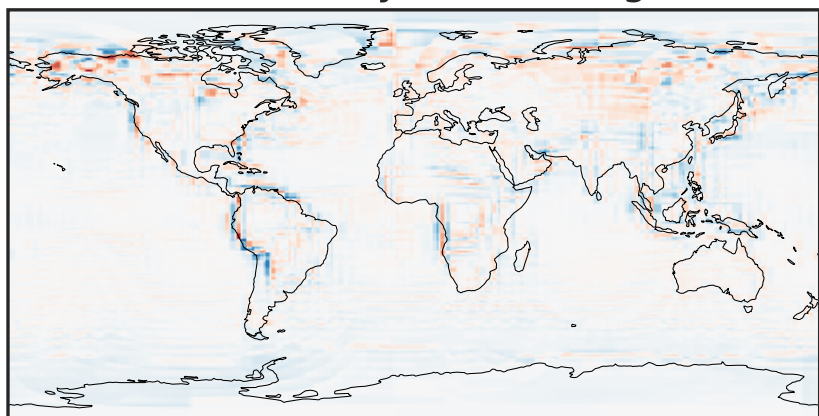
Difference (1x1.25)
Dev - Ref, Dynamic Range



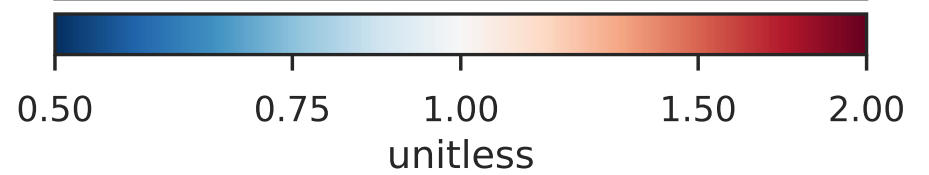
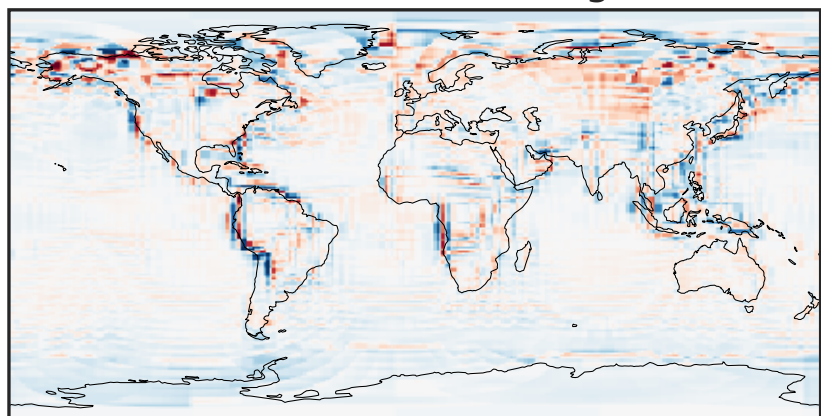
Difference (1x1.25)
Dev - Ref, Restricted Range [5%,95%]



Ratio (1x1.25)
Dev/Ref, Dynamic Range

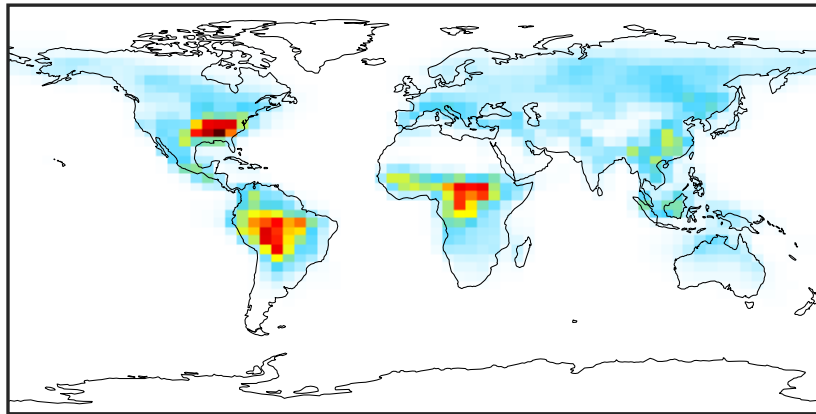


Ratio (1x1.25)
Dev/Ref, Fixed Range



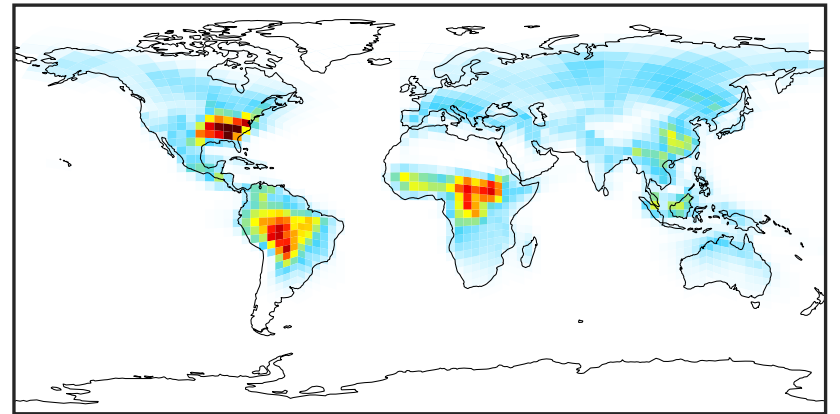
SpeciesConcVV_HAC

gcc-4x5-1Mon-14.2.0-alpha.20 (Ref)
4.0x5.0



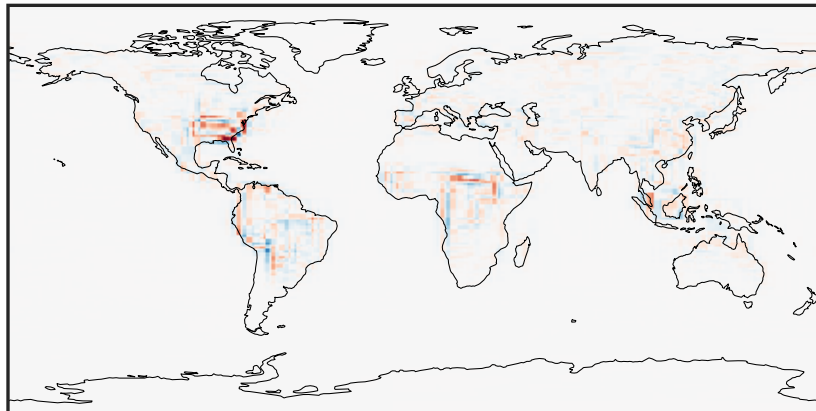
0.0000 0.1801 0.3603 0.5404 0.7206
ppb

gchp-c24-1Mon-14.2.0-alpha.20 (Dev)
c24



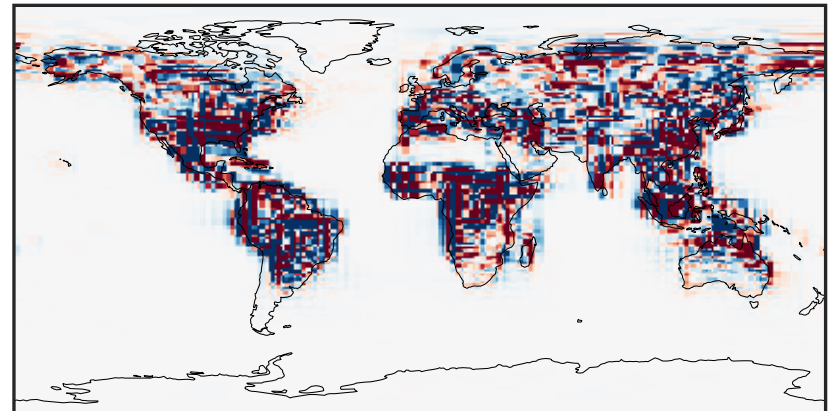
0.0000 0.1801 0.3603 0.5404 0.7206
ppb

Difference (1x1.25)
Dev - Ref, Dynamic Range



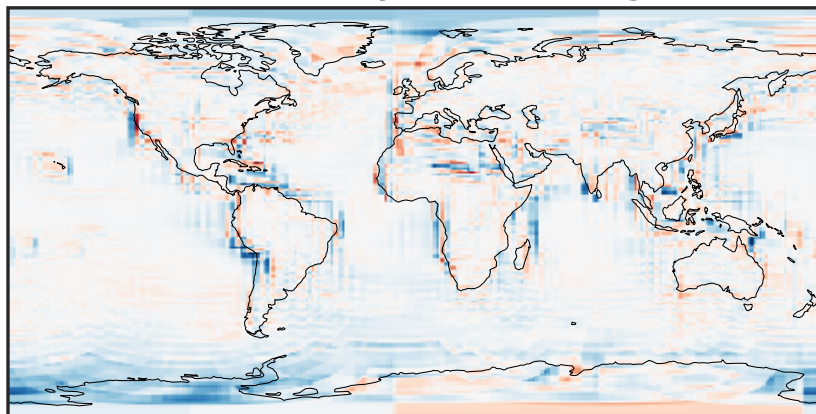
-0.3465 -0.1732 0.0000 0.1732 0.3465
ppb

Difference (1x1.25)
Dev - Ref, Restricted Range [5%,95%]



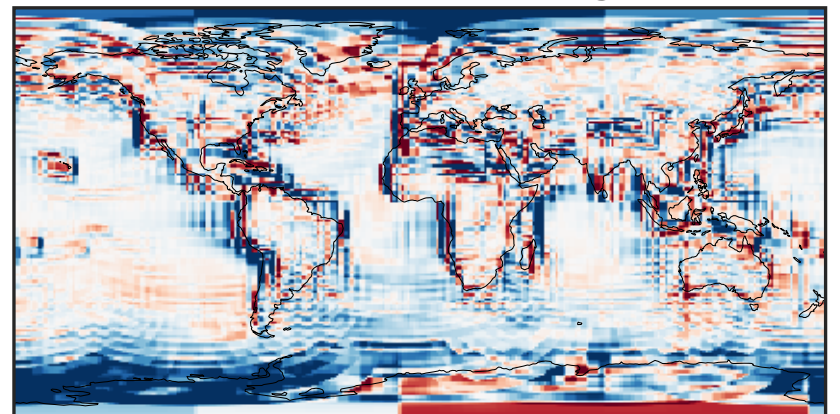
-0.008 0.000 0.008
ppb

Ratio (1x1.25)
Dev/Ref, Dynamic Range



1e-01 1 10
unitless

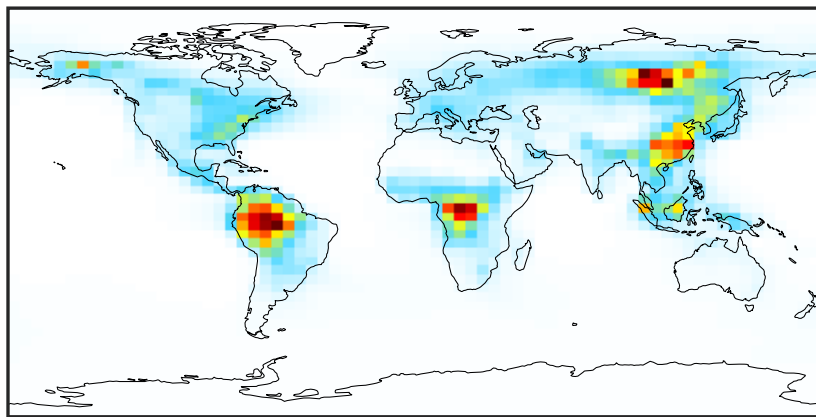
Ratio (1x1.25)
Dev/Ref, Fixed Range



0.50 0.75 1.00 1.50 2.00
unitless

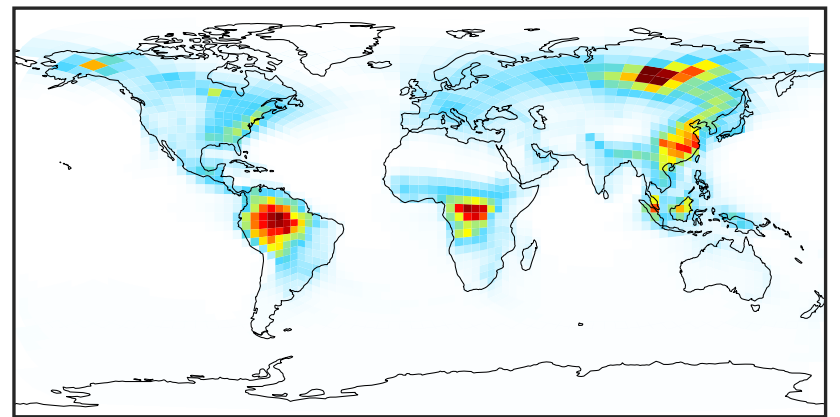
SpeciesConcVV_MEK

gcc-4x5-1Mon-14.2.0-alpha.20 (Ref)
4.0x5.0



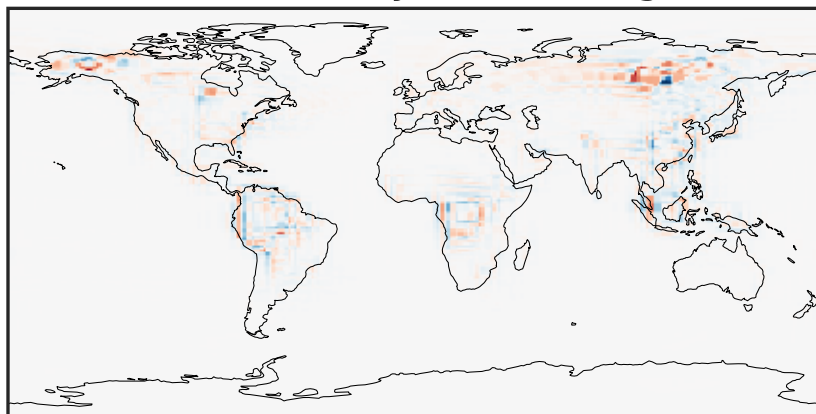
0.000 0.521 1.043 1.564 2.085
ppb

gchp-c24-1Mon-14.2.0-alpha.20 (Dev)
c24



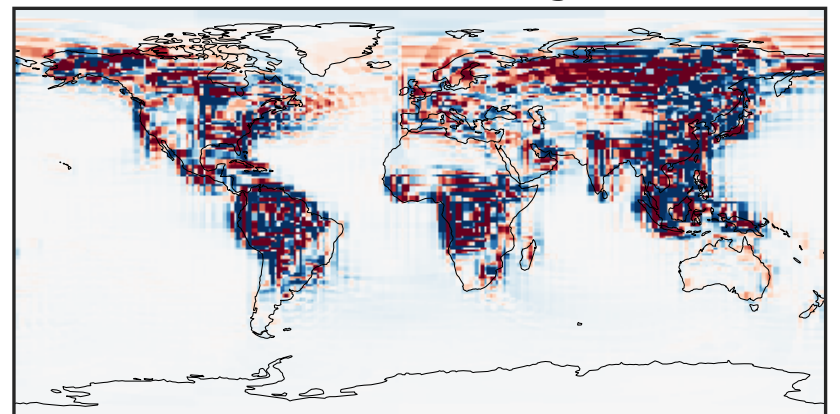
0.000 0.521 1.043 1.564 2.085
ppb

Difference (1x1.25)
Dev - Ref, Dynamic Range



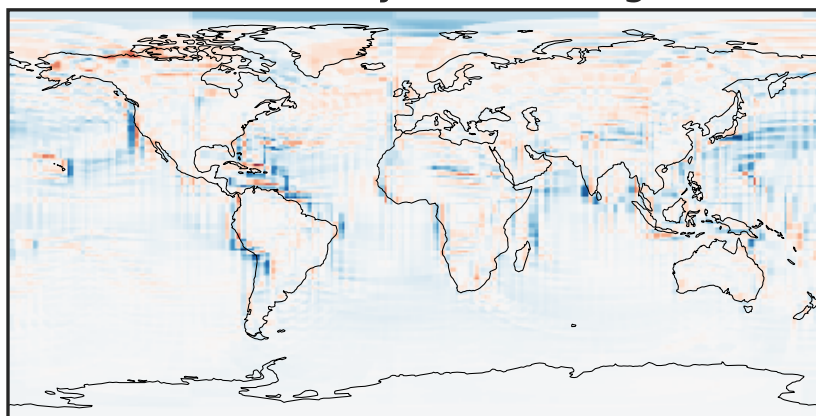
-1.005 -0.502 0.000 0.502 1.005
ppb

Difference (1x1.25)
Dev - Ref, Restricted Range [5%,95%]



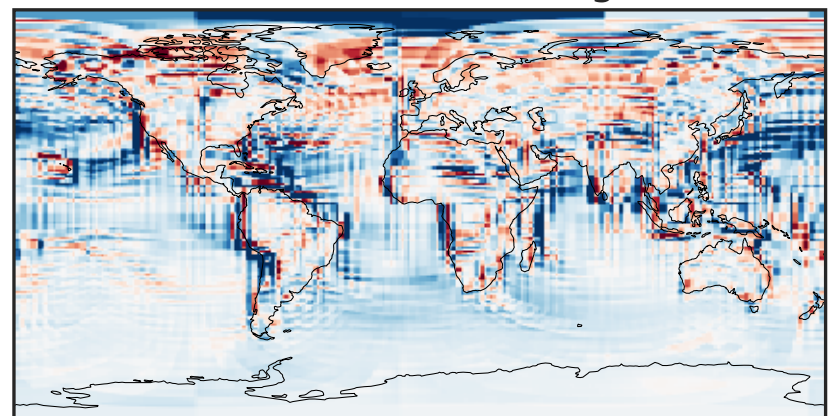
-0.025 0.000 0.025
ppb

Ratio (1x1.25)
Dev/Ref, Dynamic Range



1e-01 1 10
unitless

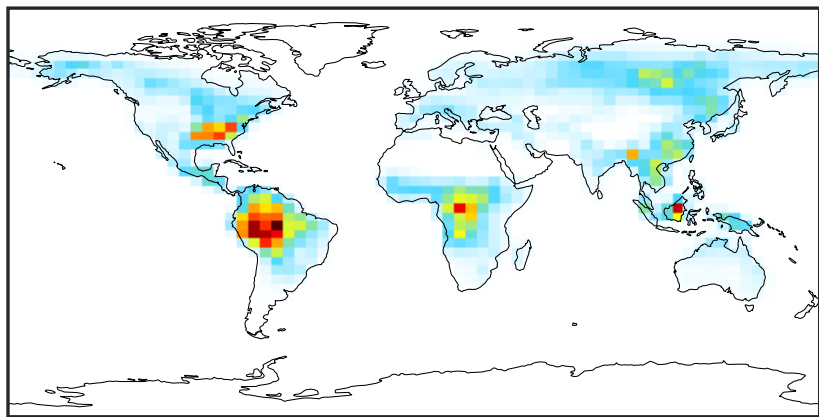
Ratio (1x1.25)
Dev/Ref, Fixed Range



0.50 0.75 1.00 1.50 2.00
unitless

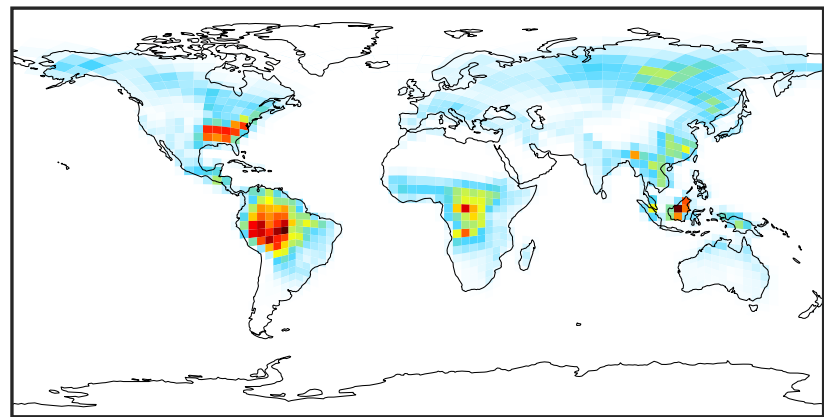
SpeciesConcVV_MVK

gcc-4x5-1Mon-14.2.0-alpha.20 (Ref)
4.0x5.0



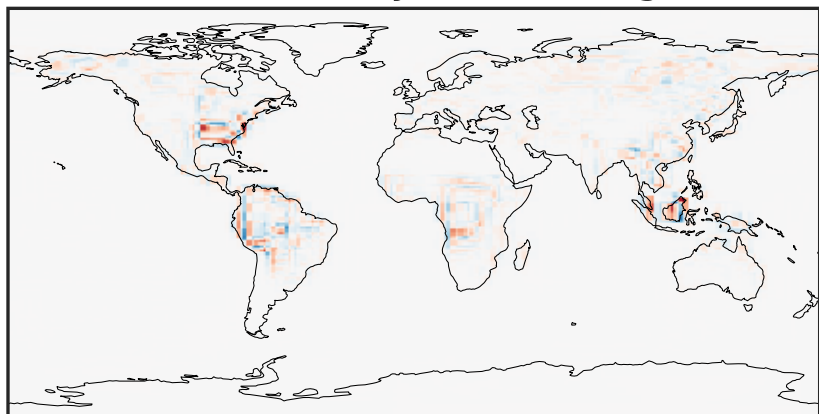
0.000 0.431 0.863 1.294 1.725
ppb

gchp-c24-1Mon-14.2.0-alpha.20 (Dev)
c24



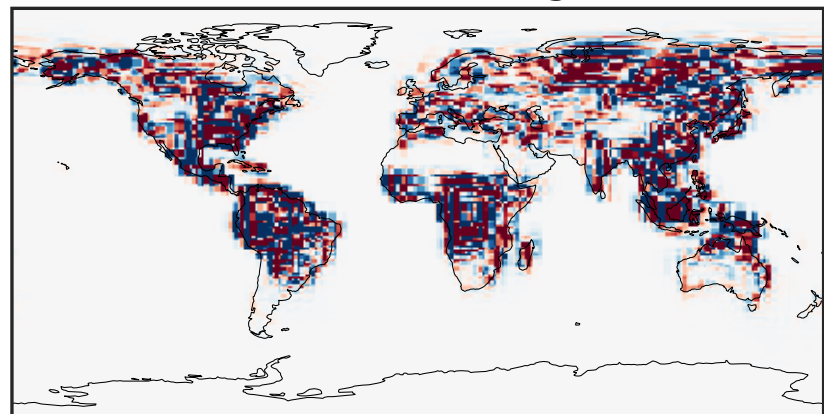
0.000 0.431 0.863 1.294 1.725
ppb

Difference (1x1.25)
Dev - Ref, Dynamic Range



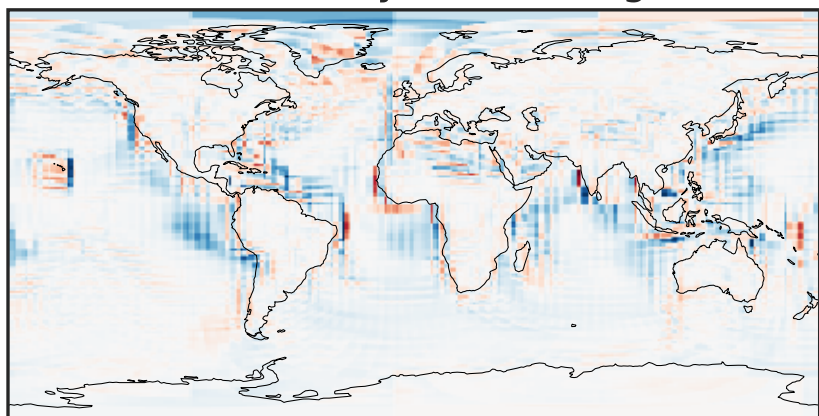
-0.888 -0.444 0.000 0.444 0.888
ppb

Difference (1x1.25)
Dev - Ref, Restricted Range [5%,95%]



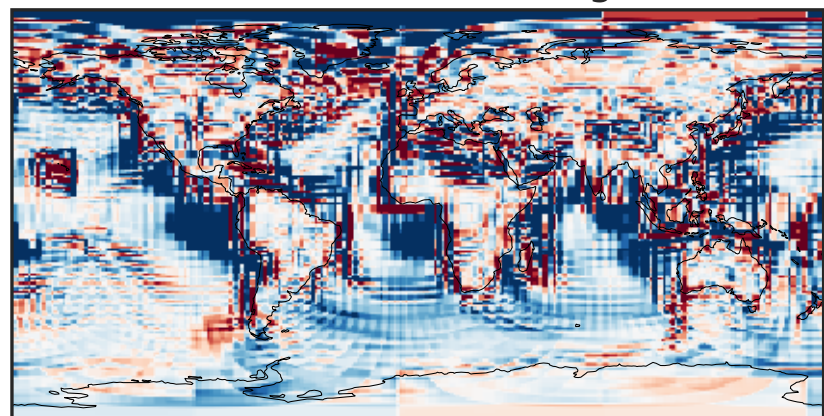
-0.02 0.00 0.02
ppb

Ratio (1x1.25)
Dev/Ref, Dynamic Range



1e-02 1e-01 1 10 100
unitless

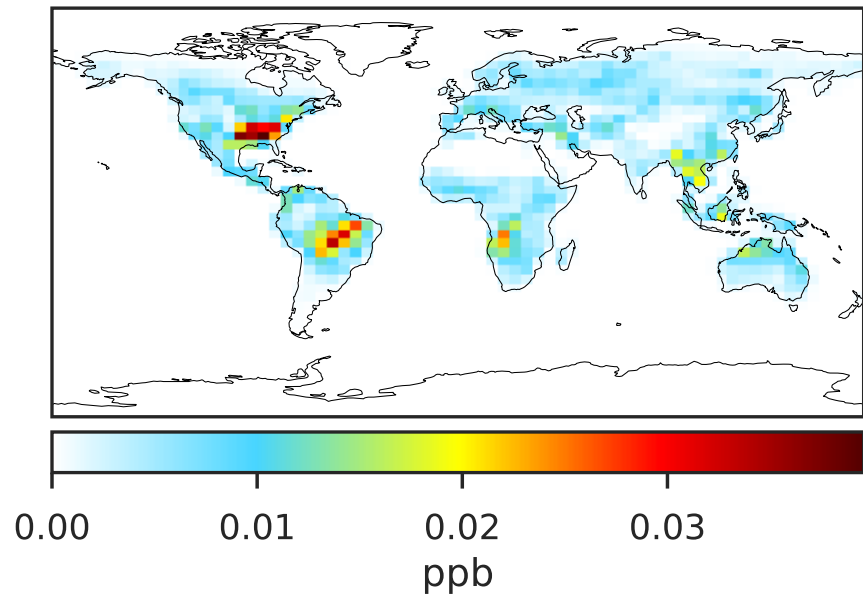
Ratio (1x1.25)
Dev/Ref, Fixed Range



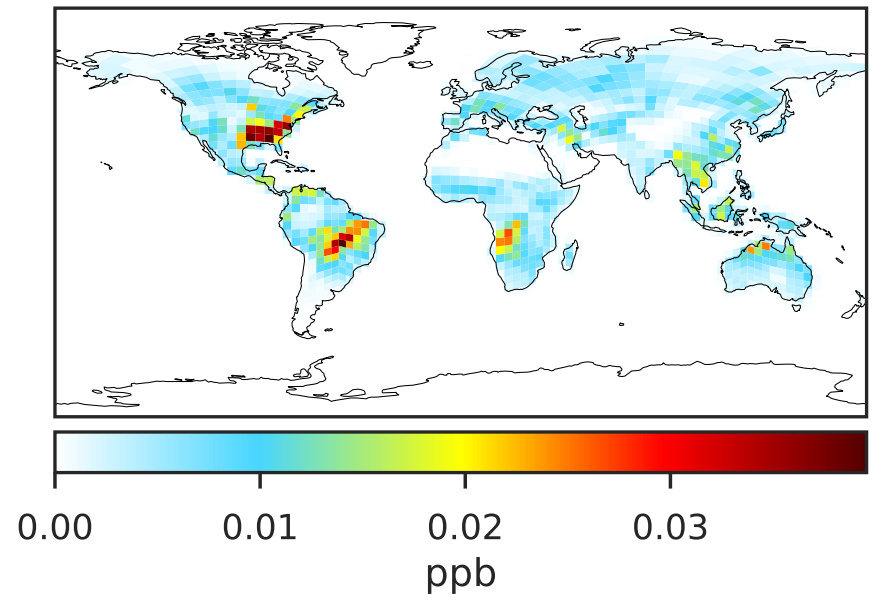
0.50 0.75 1.00 1.50 2.00
unitless

SpeciesConcVV_ISOPN

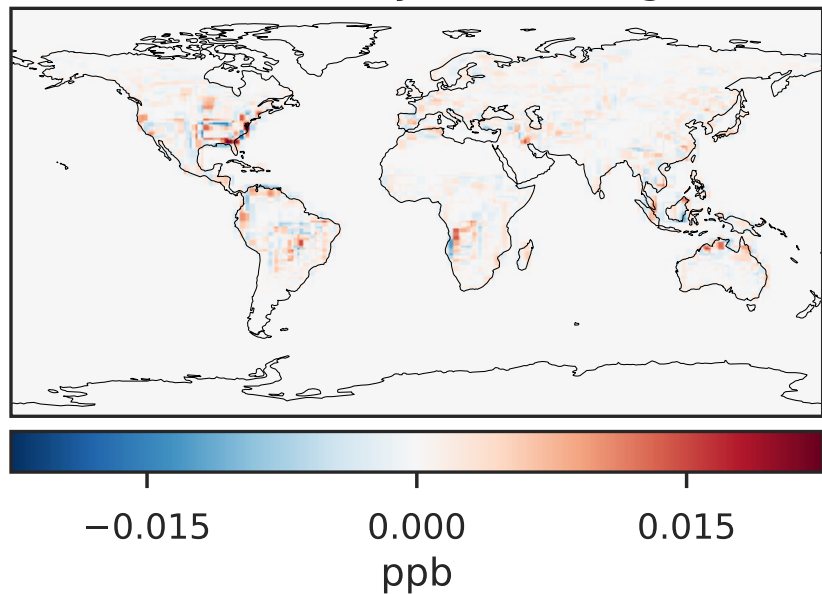
gcc-4x5-1Mon-14.2.0-alpha.20 (Ref)
4.0x5.0



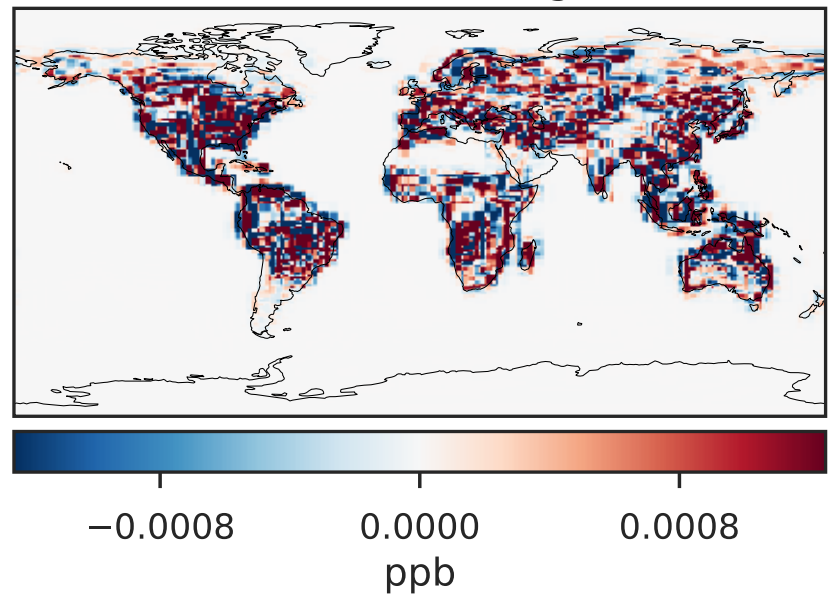
gchp-c24-1Mon-14.2.0-alpha.20 (Dev)
c24



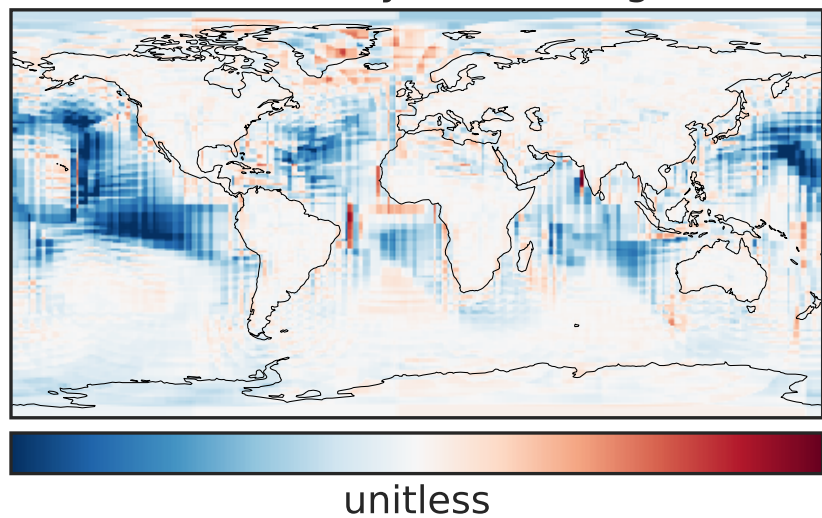
Difference (1x1.25)
Dev - Ref, Dynamic Range



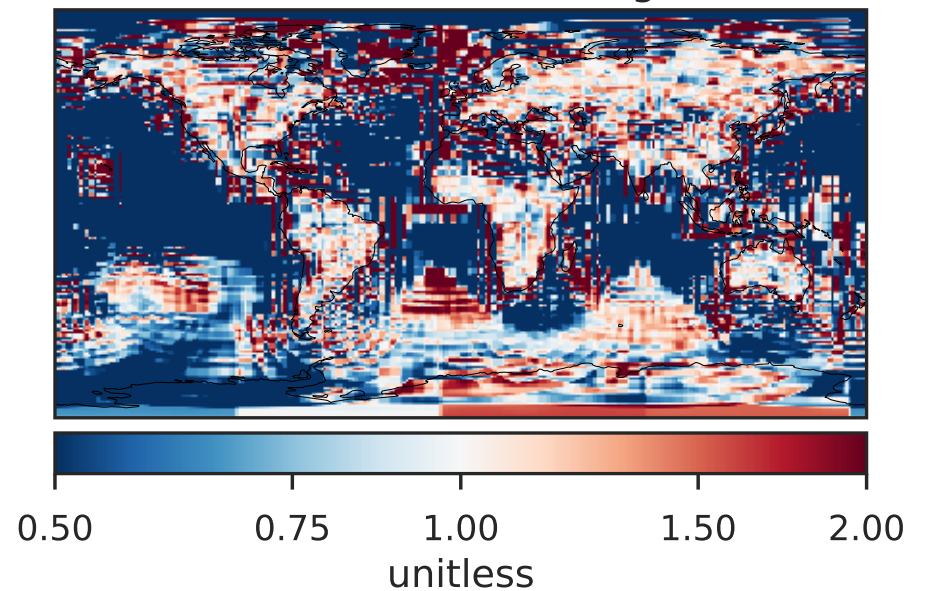
Difference (1x1.25)
Dev - Ref, Restricted Range [5%,95%]



Ratio (1x1.25)
Dev/Ref, Dynamic Range

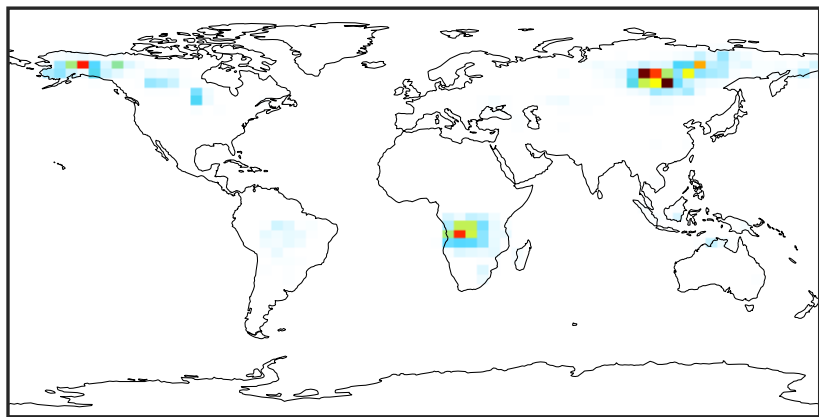


Ratio (1x1.25)
Dev/Ref, Fixed Range



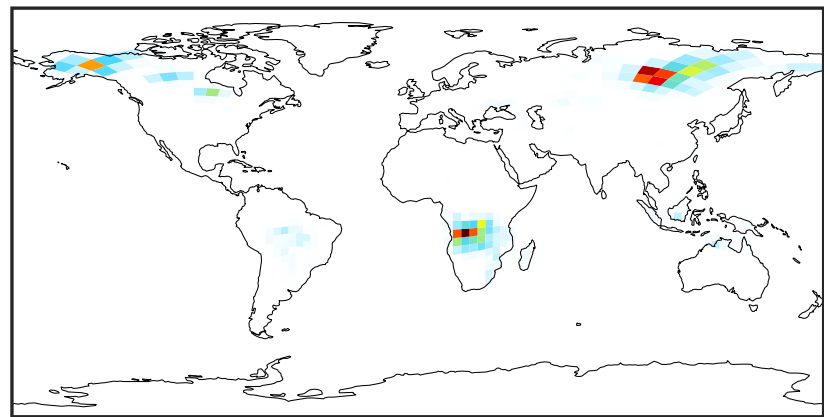
SpeciesConcVV_FURA

gcc-4x5-1Mon-14.2.0-alpha.20 (Ref)
4.0x5.0



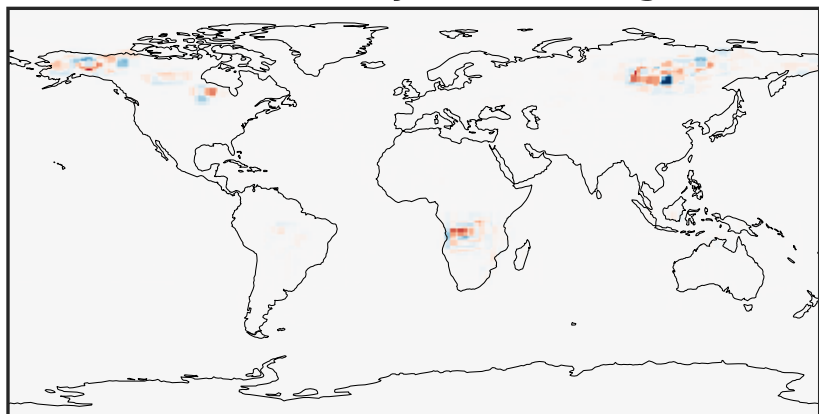
0.000 0.475 0.950 1.426 1.901
ppb

gchp-c24-1Mon-14.2.0-alpha.20 (Dev)
c24



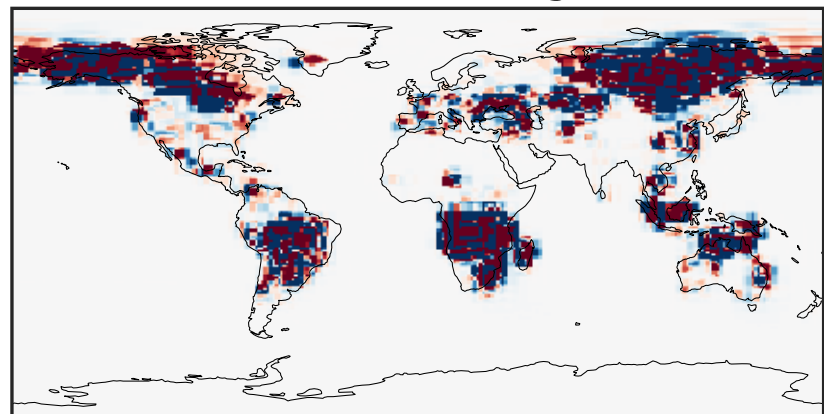
0.000 0.475 0.950 1.426 1.901
ppb

Difference (1x1.25)
Dev - Ref, Dynamic Range



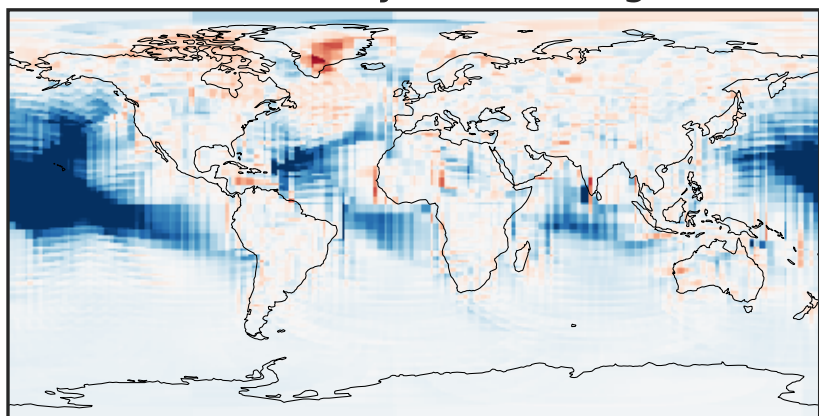
-1.332 -0.666 0.000 0.666 1.332
ppb

Difference (1x1.25)
Dev - Ref, Restricted Range [5%,95%]



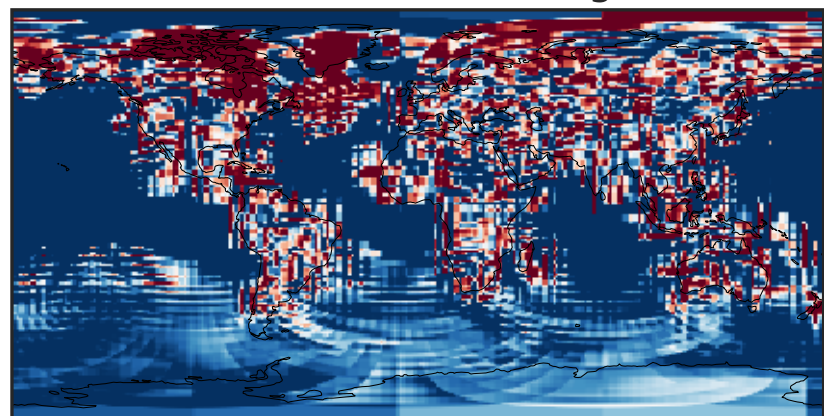
-0.0015 0.0000 0.0015
ppb

Ratio (1x1.25)
Dev/Ref, Dynamic Range



unitless

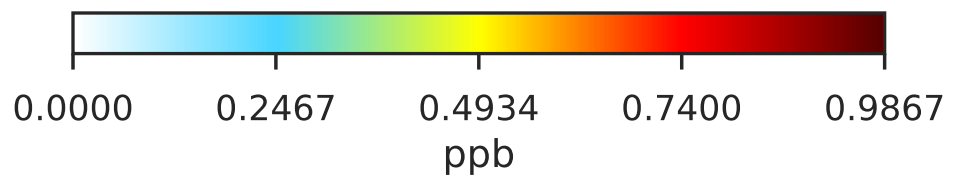
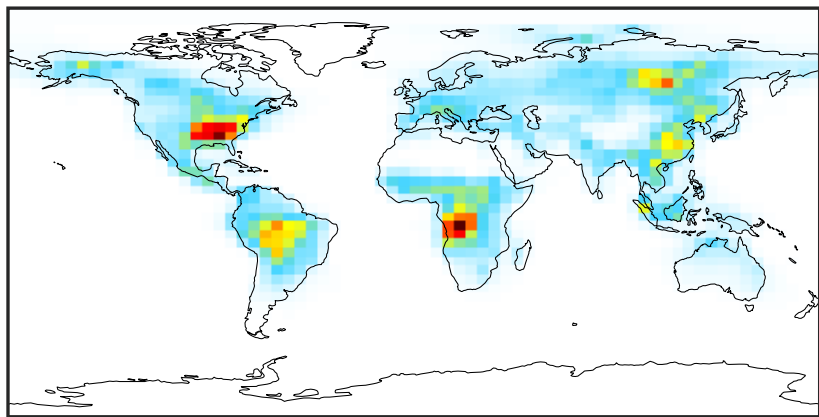
Ratio (1x1.25)
Dev/Ref, Fixed Range



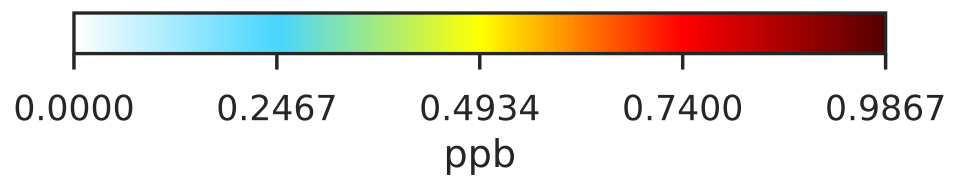
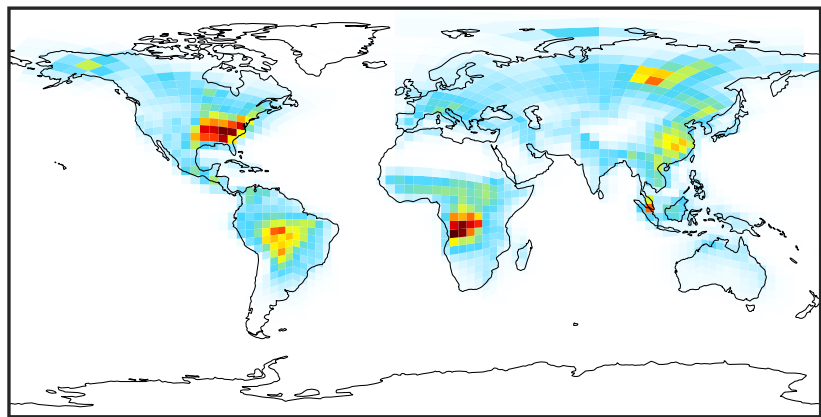
0.50 0.75 1.00 1.50 2.00
unitless

SpeciesConcVV_GLYC

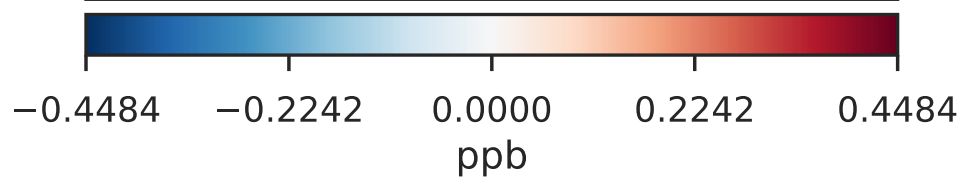
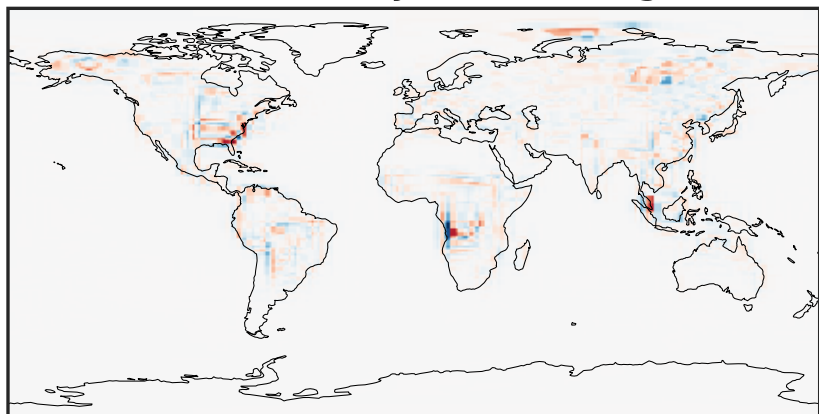
gcc-4x5-1Mon-14.2.0-alpha.20 (Ref)
4.0x5.0



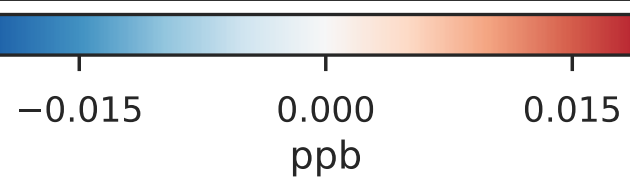
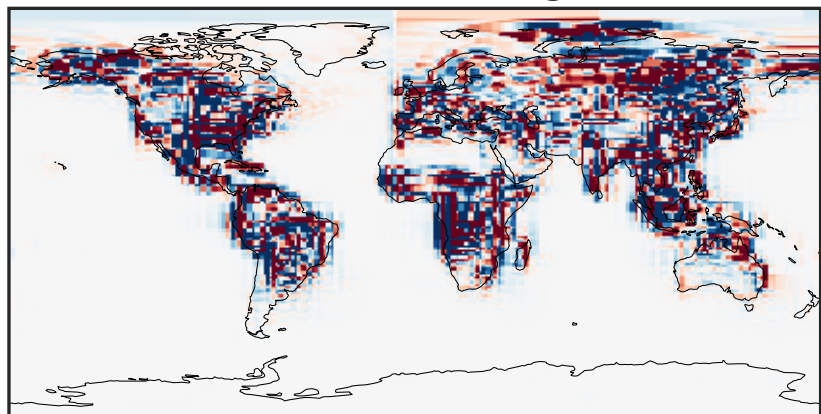
gchp-c24-1Mon-14.2.0-alpha.20 (Dev)
c24



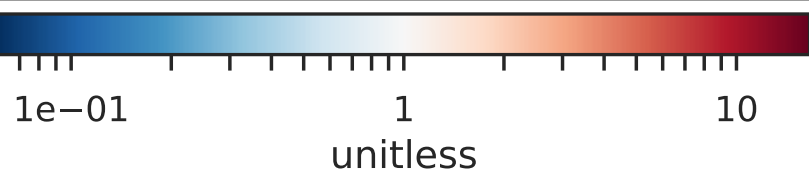
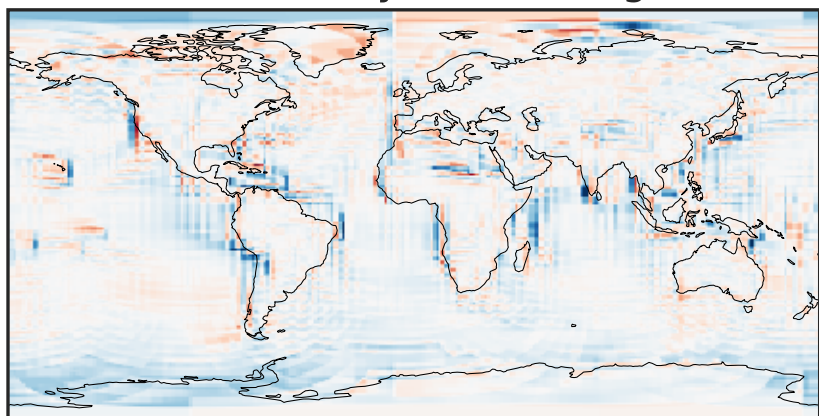
Difference (1x1.25)
Dev - Ref, Dynamic Range



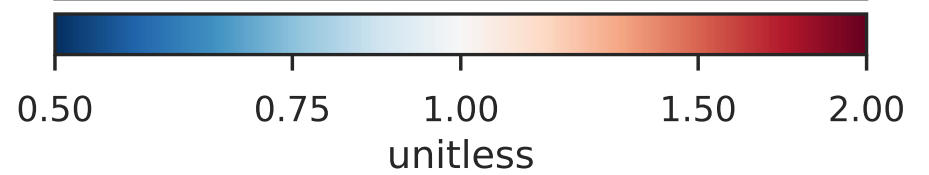
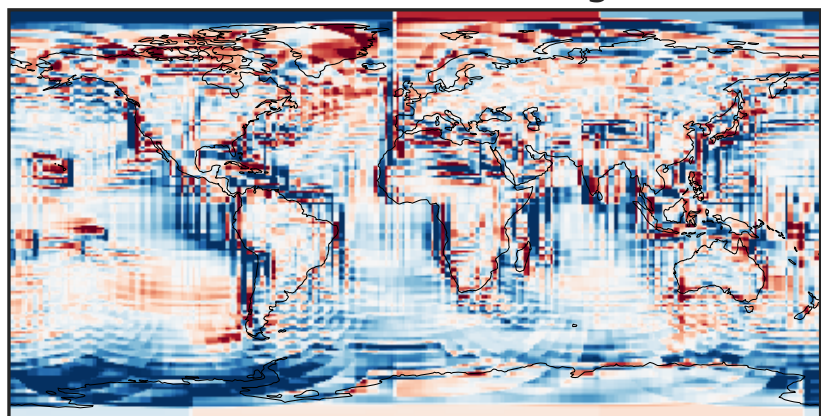
Difference (1x1.25)
Dev - Ref, Restricted Range [5%,95%]



Ratio (1x1.25)
Dev/Ref, Dynamic Range

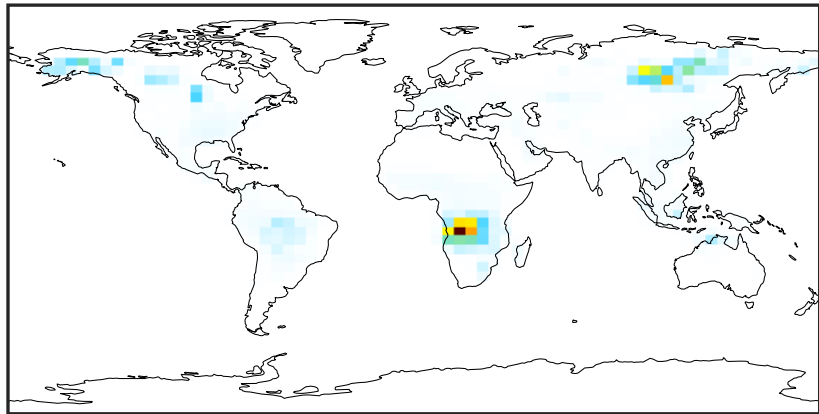


Ratio (1x1.25)
Dev/Ref, Fixed Range



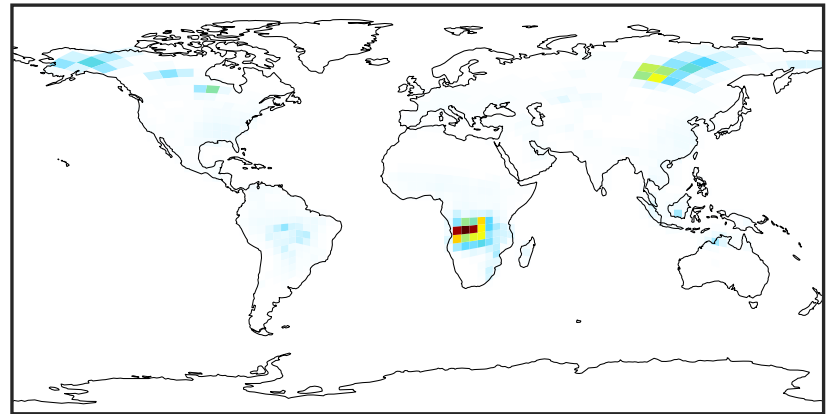
SpeciesConcVV_GLYX

gcc-4x5-1Mon-14.2.0-alpha.20 (Ref)
4.0x5.0



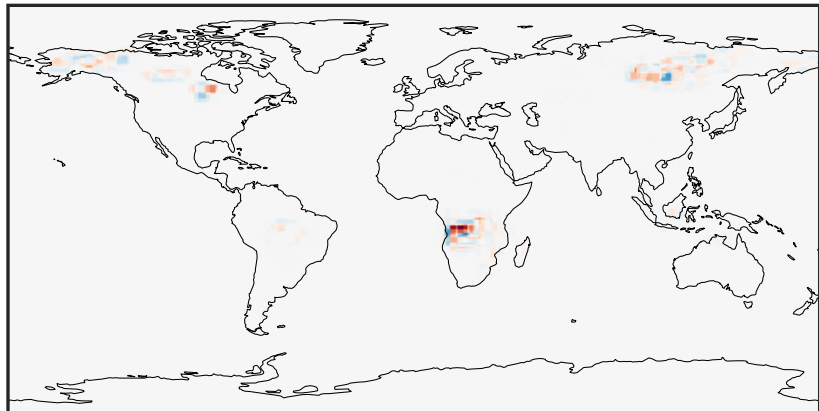
0.000 0.299 0.597 0.896 1.194
ppb

gchp-c24-1Mon-14.2.0-alpha.20 (Dev)
c24



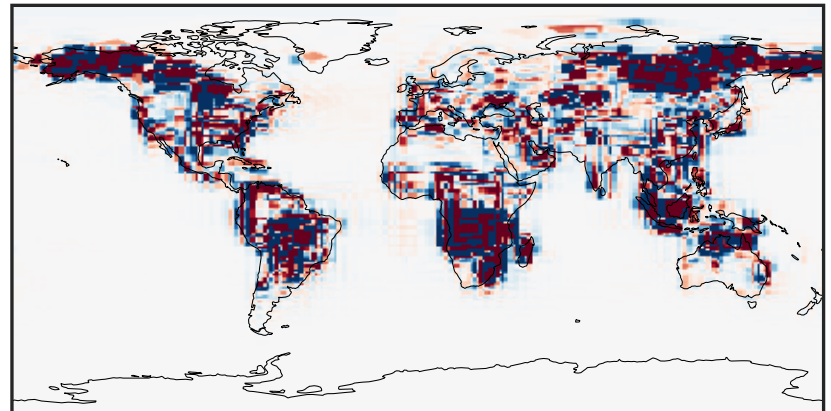
0.000 0.299 0.597 0.896 1.194
ppb

Difference (1x1.25)
Dev - Ref, Dynamic Range



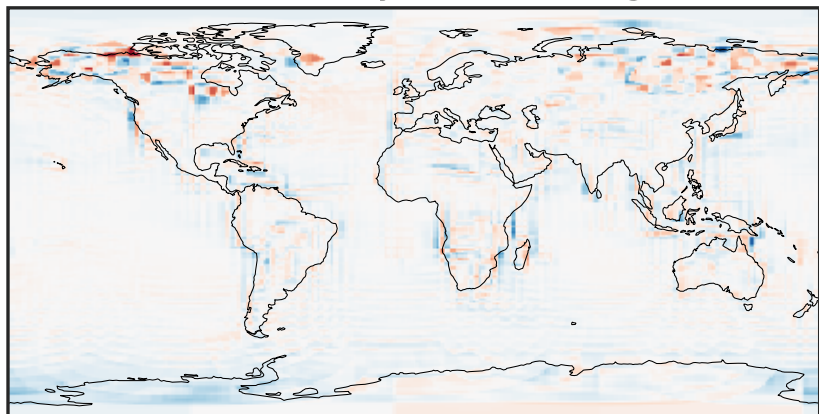
-0.773 -0.387 0.000 0.387 0.773
ppb

Difference (1x1.25)
Dev - Ref, Restricted Range [5%,95%]



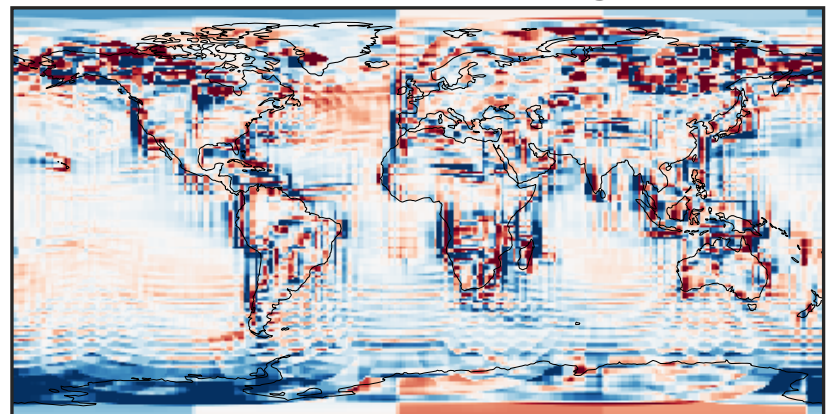
-0.0015 0.0000 0.0015
ppb

Ratio (1x1.25)
Dev/Ref, Dynamic Range



1e-01 1 10
unitless

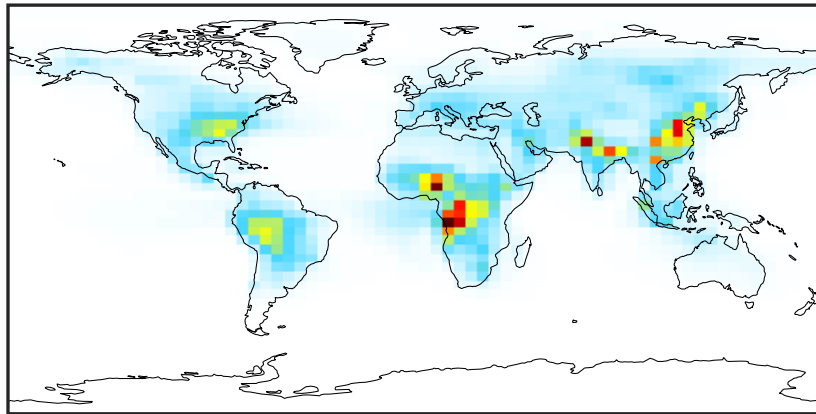
Ratio (1x1.25)
Dev/Ref, Fixed Range



0.50 0.75 1.00 1.50 2.00
unitless

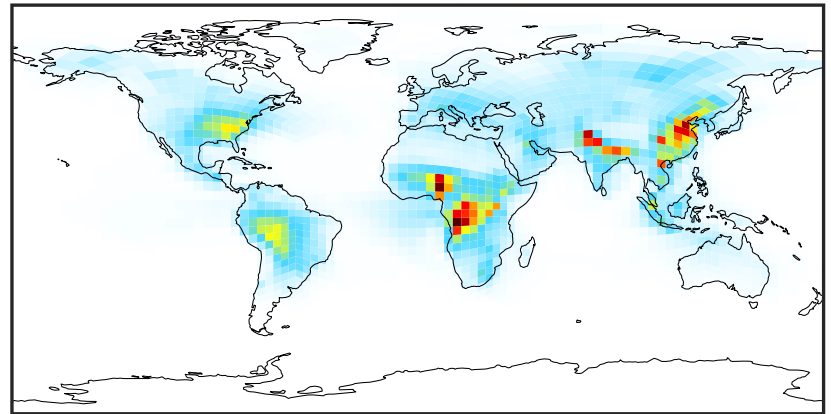
SpeciesConcVV_HCOOH

gcc-4x5-1Mon-14.2.0-alpha.20 (Ref)
4.0x5.0



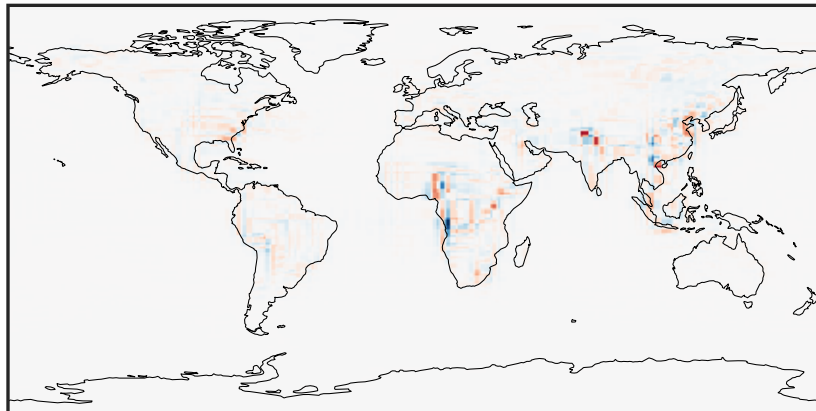
0.000 0.554 1.108 1.662 2.216
ppb

gchp-c24-1Mon-14.2.0-alpha.20 (Dev)
c24



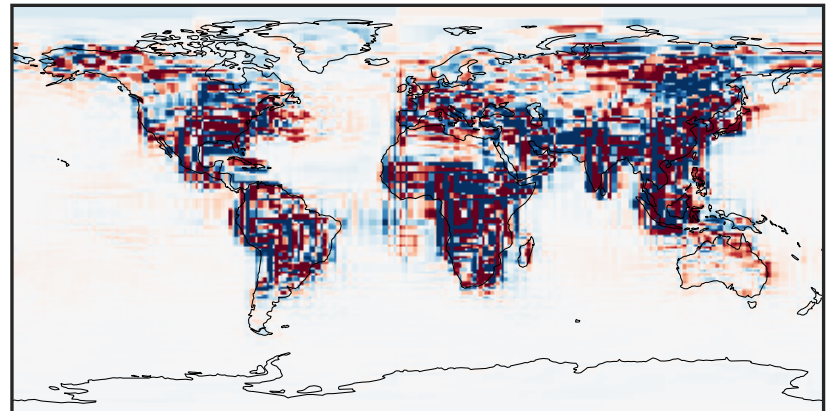
0.000 0.554 1.108 1.662 2.216
ppb

Difference (1x1.25)
Dev - Ref, Dynamic Range



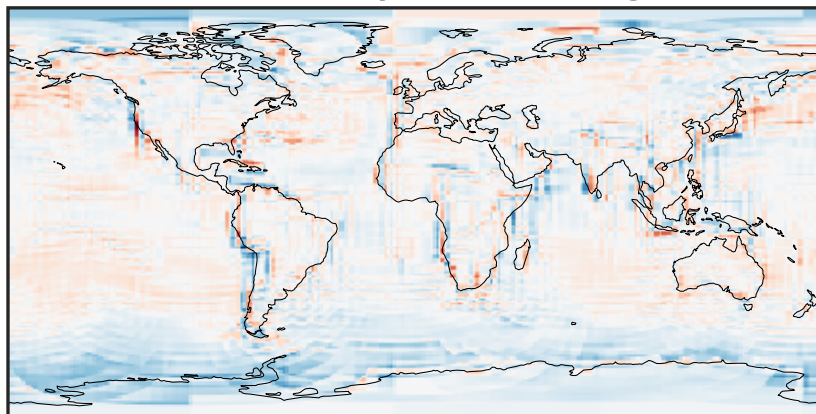
-1.171 -0.585 0.000 0.585 1.171
ppb

Difference (1x1.25)
Dev - Ref, Restricted Range [5%,95%]



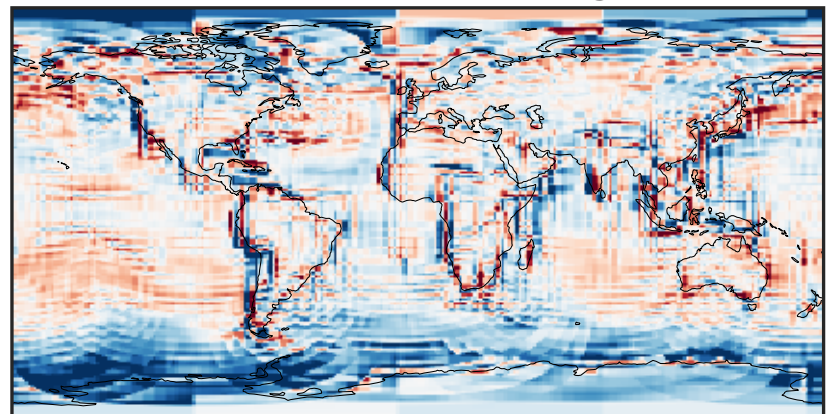
-0.02 0.00 0.02
ppb

Ratio (1x1.25)
Dev/Ref, Dynamic Range



0.130 0.565 1.000 4.340 7.679
unitless

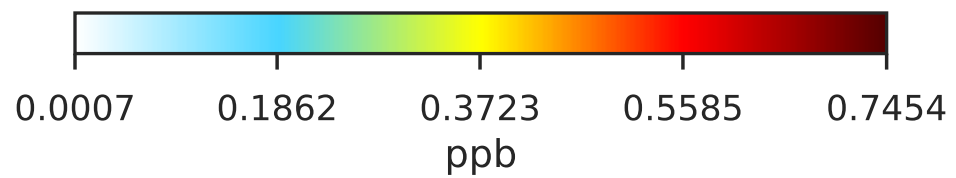
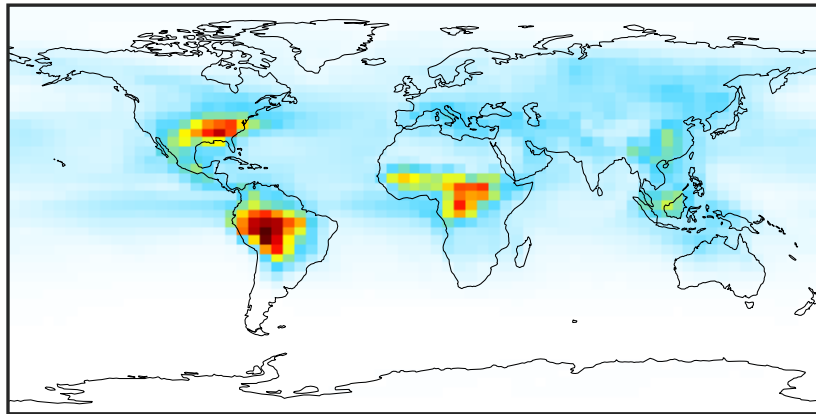
Ratio (1x1.25)
Dev/Ref, Fixed Range



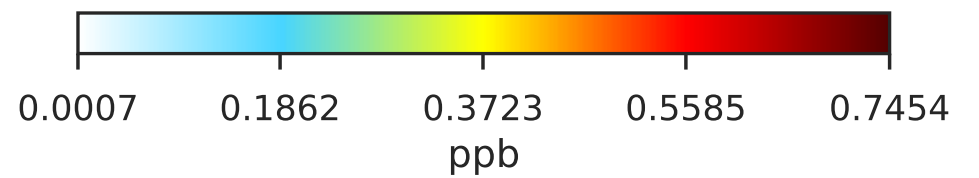
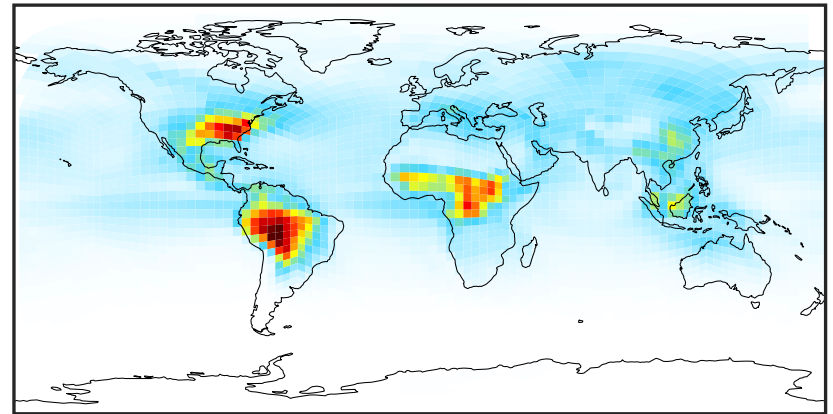
0.50 0.75 1.00 1.50 2.00
unitless

SpeciesConcVV_MAP

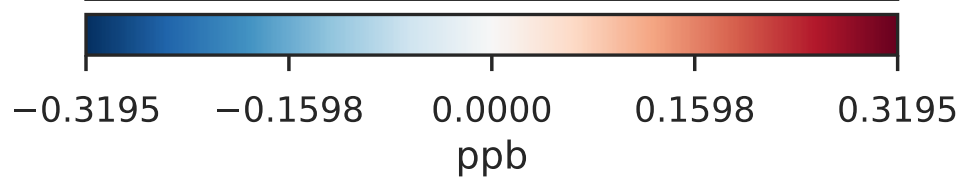
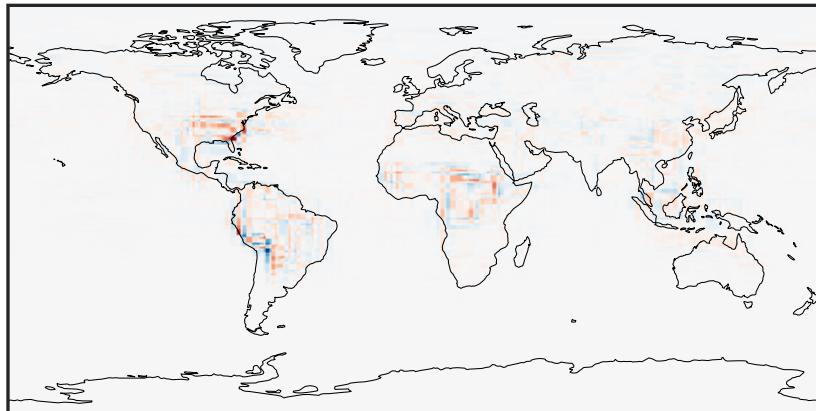
gcc-4x5-1Mon-14.2.0-alpha.20 (Ref)
4.0x5.0



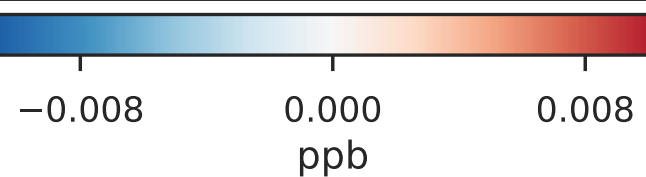
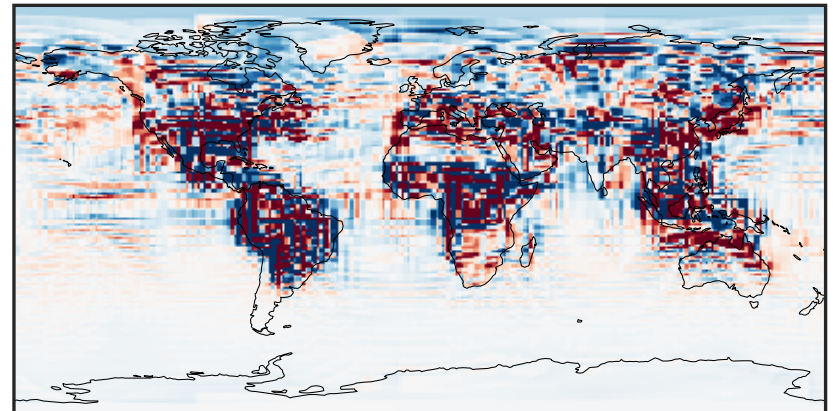
gchp-c24-1Mon-14.2.0-alpha.20 (Dev)
c24



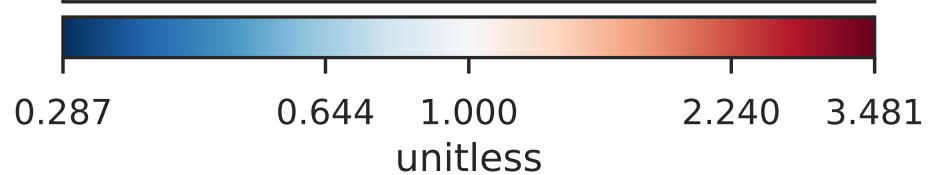
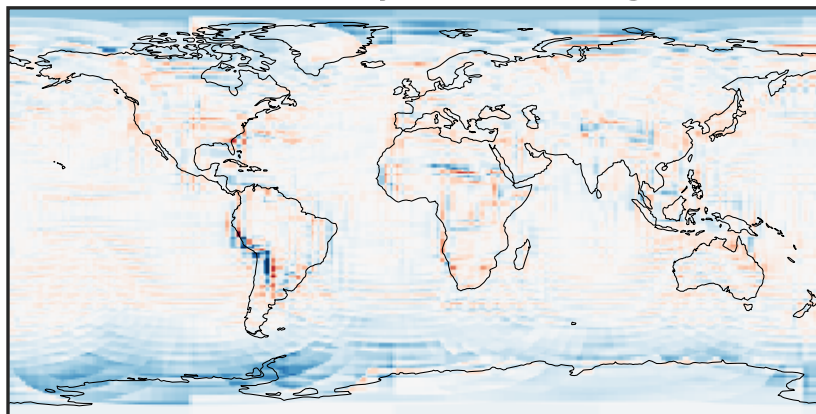
Difference (1x1.25)
Dev - Ref, Dynamic Range



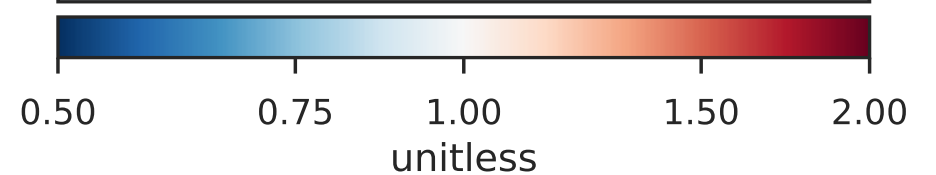
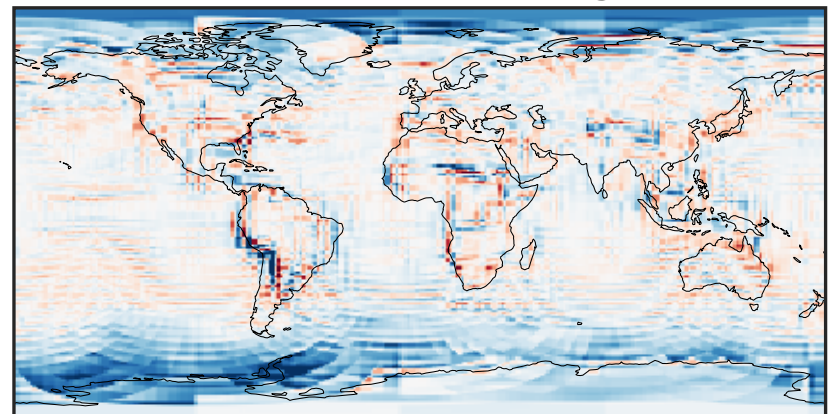
Difference (1x1.25)
Dev - Ref, Restricted Range [5%,95%]



Ratio (1x1.25)
Dev/Ref, Dynamic Range

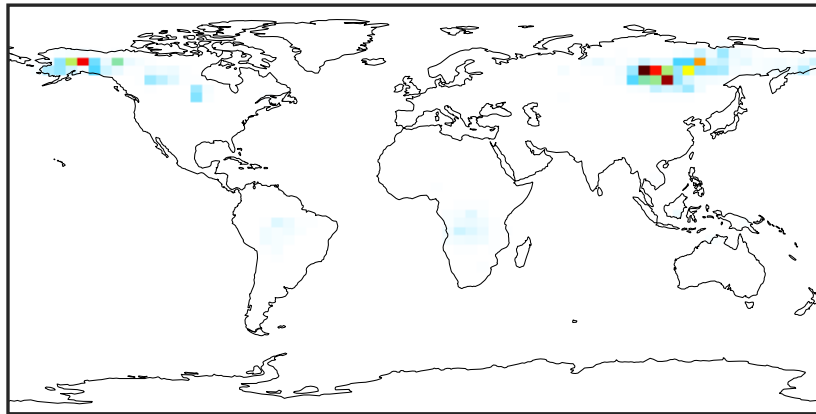


Ratio (1x1.25)
Dev/Ref, Fixed Range



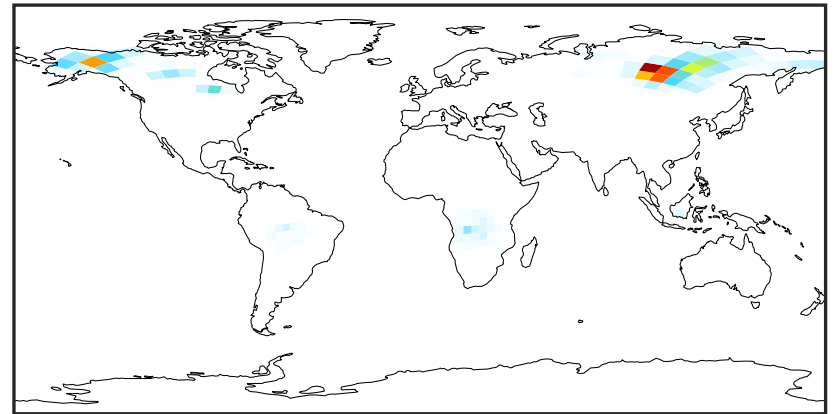
SpeciesConcVV_PHEN

gcc-4x5-1Mon-14.2.0-alpha.20 (Ref)
4.0x5.0



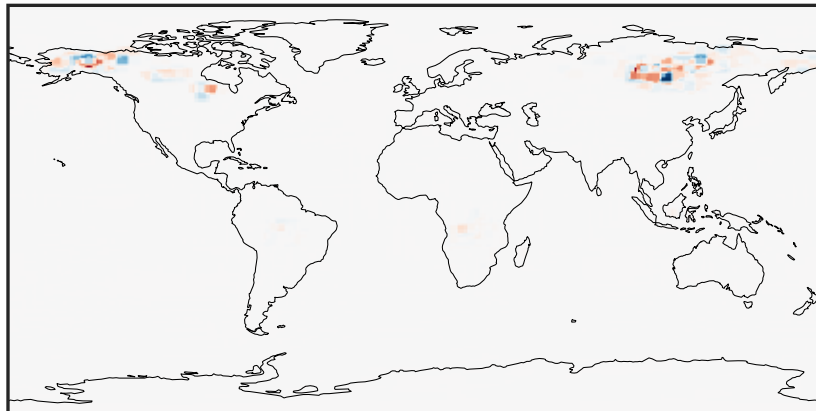
0.000 0.223 0.446 0.669 0.892
ppb

gchp-c24-1Mon-14.2.0-alpha.20 (Dev)
c24



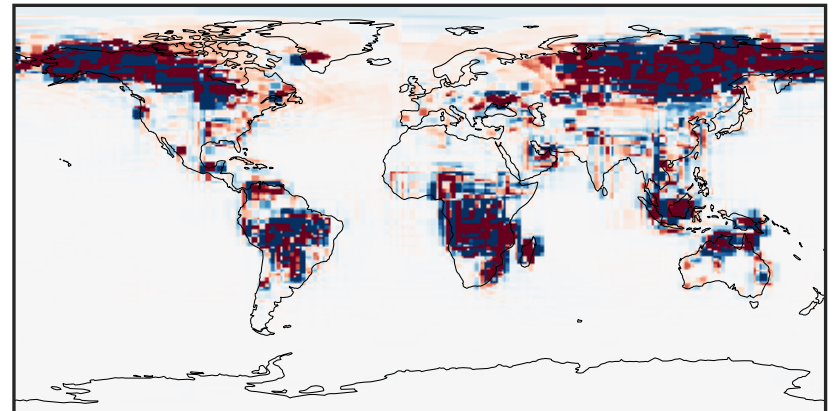
0.000 0.223 0.446 0.669 0.892
ppb

Difference (1x1.25)
Dev - Ref, Dynamic Range



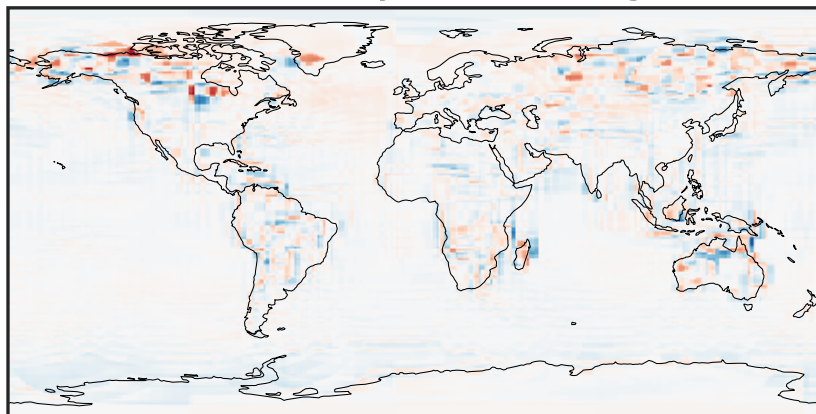
-0.578 -0.289 0.000 0.289 0.578
ppb

Difference (1x1.25)
Dev - Ref, Restricted Range [5%,95%]



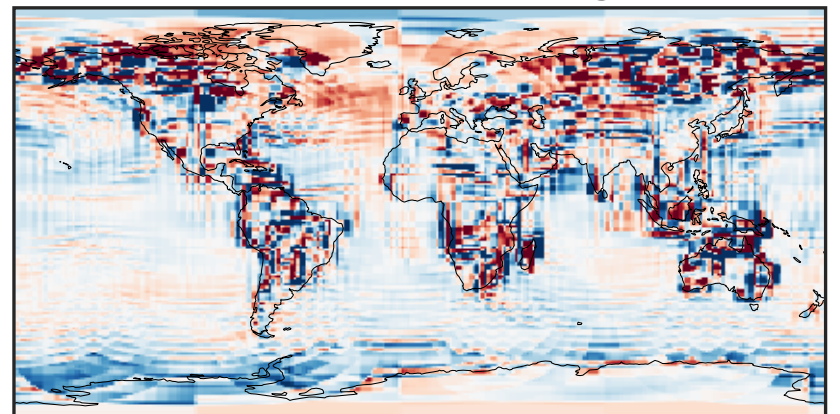
-0.0003 0.0000 0.0003
ppb

Ratio (1x1.25)
Dev/Ref, Dynamic Range



1e-01 1 10
unitless

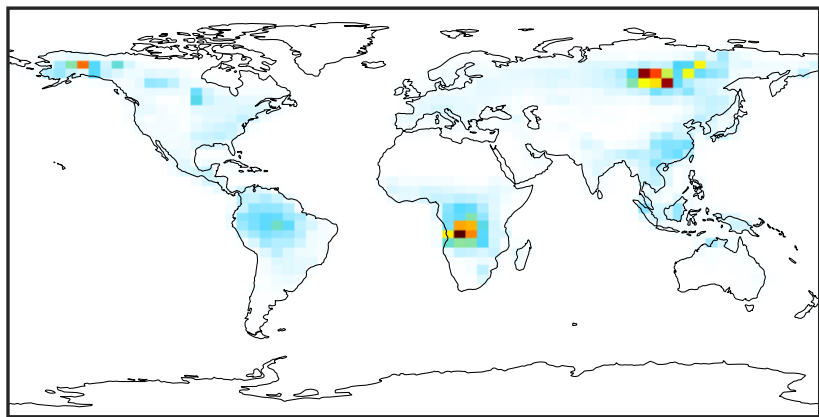
Ratio (1x1.25)
Dev/Ref, Fixed Range



0.50 0.75 1.00 1.50 2.00
unitless

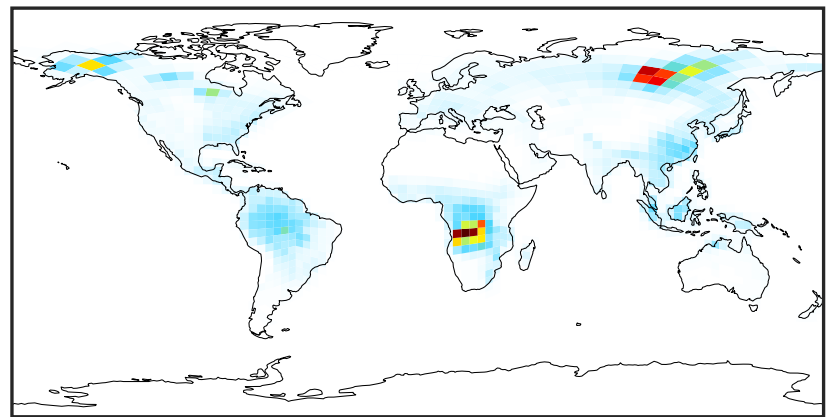
SpeciesConcVV_RCHO

gcc-4x5-1Mon-14.2.0-alpha.20 (Ref)
4.0x5.0



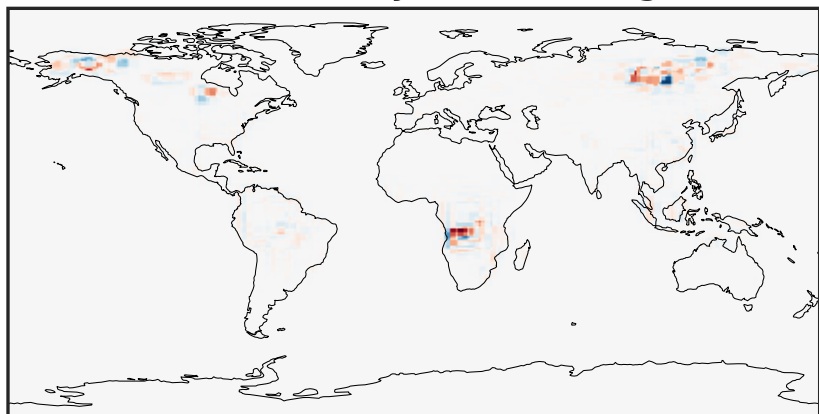
0.000 1.088 2.176 3.264 4.352
ppb

gchp-c24-1Mon-14.2.0-alpha.20 (Dev)
c24



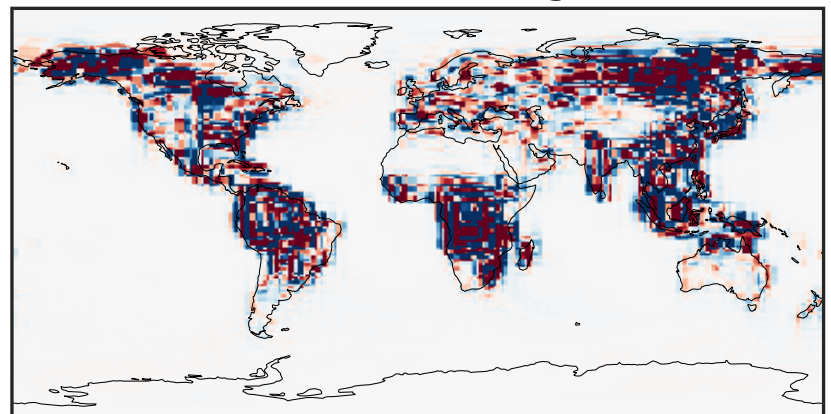
0.000 1.088 2.176 3.264 4.352
ppb

Difference (1x1.25)
Dev - Ref, Dynamic Range



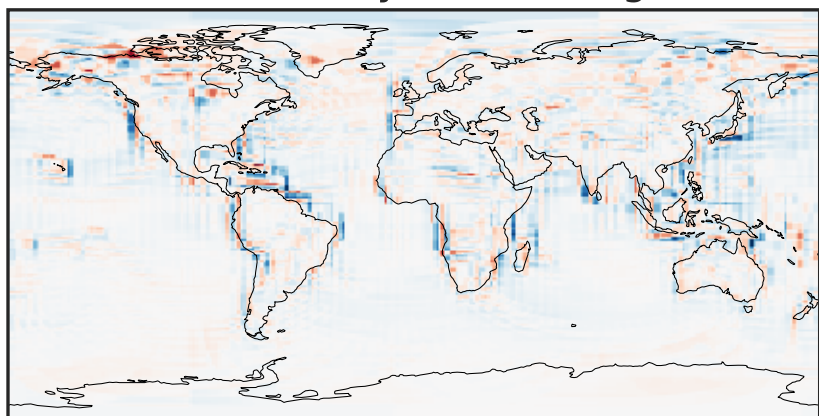
-2.693 -1.347 0.000 1.347 2.693
ppb

Difference (1x1.25)
Dev - Ref, Restricted Range [5%,95%]



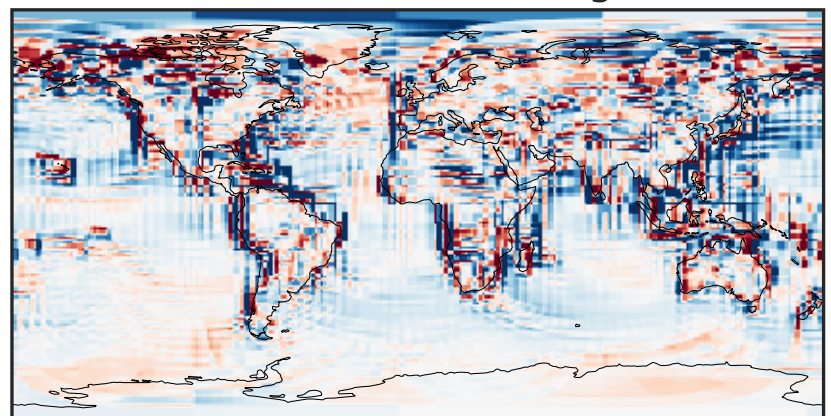
-0.02 0.00 0.02
ppb

Ratio (1x1.25)
Dev/Ref, Dynamic Range



1e-01 1 10
unitless

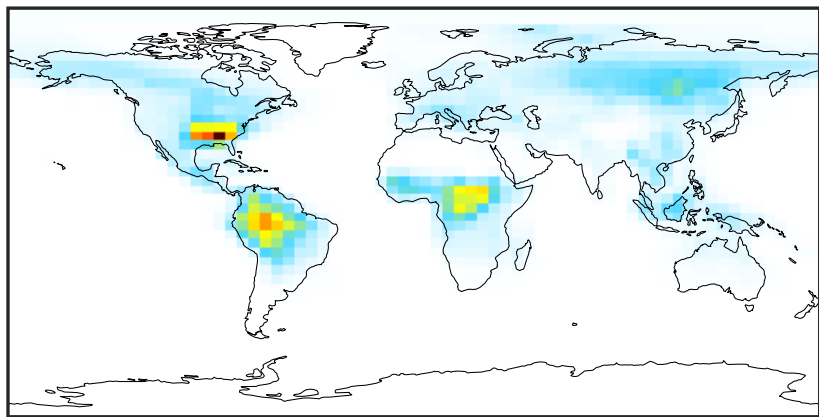
Ratio (1x1.25)
Dev/Ref, Fixed Range



0.50 0.75 1.00 1.50 2.00
unitless

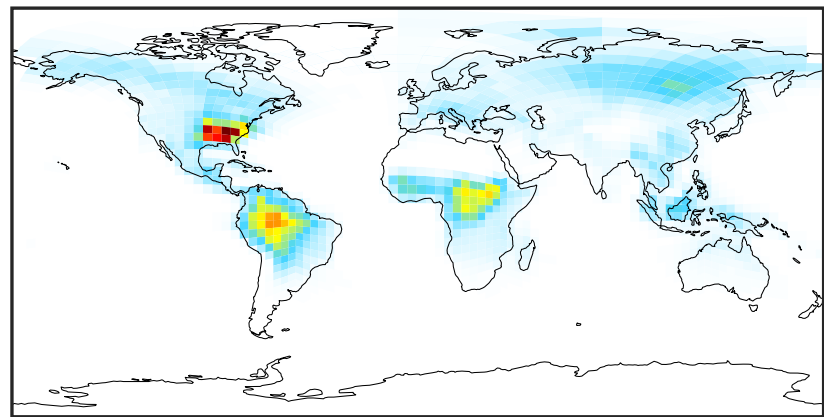
SpeciesConcVV_ETHP

gcc-4x5-1Mon-14.2.0-alpha.20 (Ref)
4.0x5.0



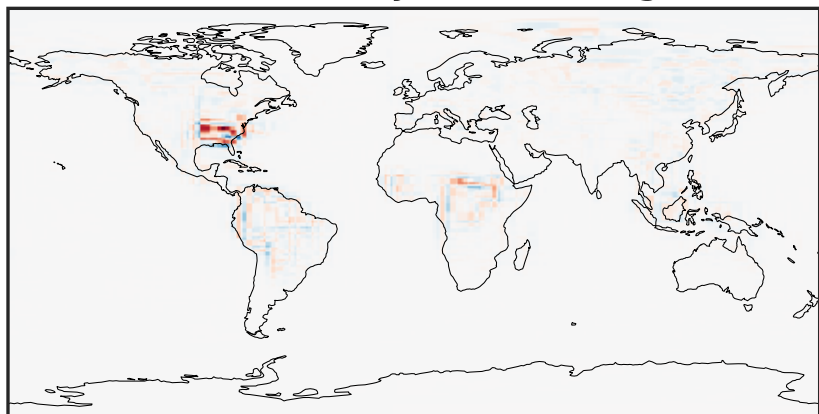
0.0000 0.0763 0.1527 0.2290 0.3054
ppb

gchp-c24-1Mon-14.2.0-alpha.20 (Dev)
c24



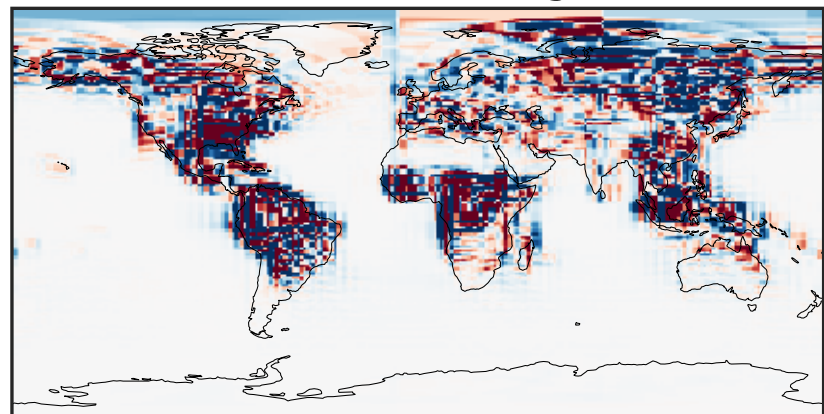
0.0000 0.0763 0.1527 0.2290 0.3054
ppb

Difference (1x1.25)
Dev - Ref, Dynamic Range



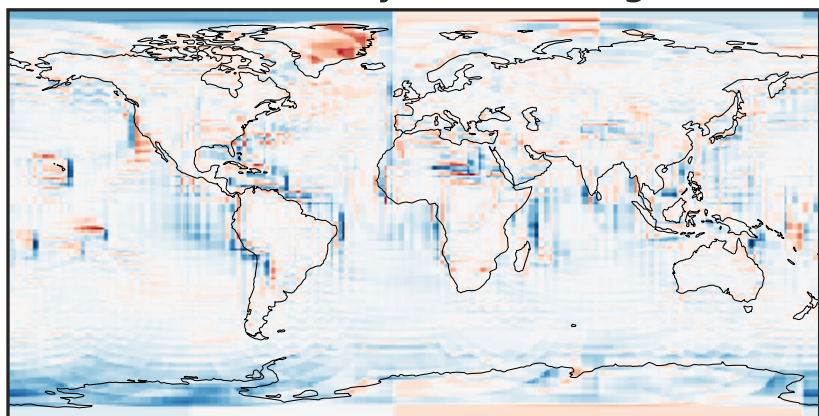
-0.1430 -0.0715 0.0000 0.0715 0.1430
ppb

Difference (1x1.25)
Dev - Ref, Restricted Range [5%,95%]



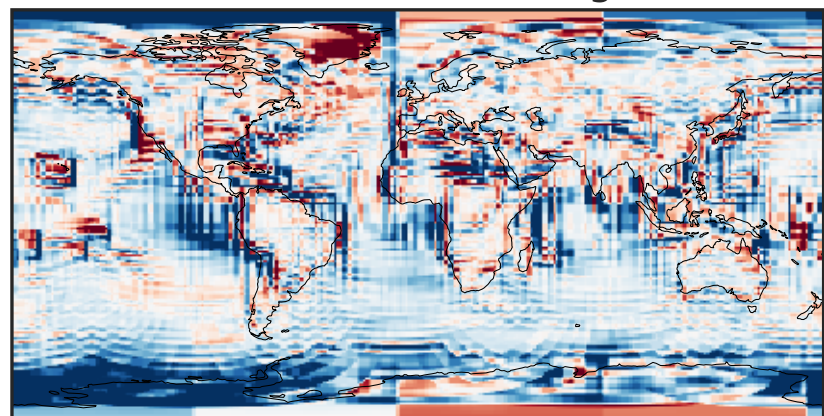
-0.0025 0.0000 0.0025
ppb

Ratio (1x1.25)
Dev/Ref, Dynamic Range



1e-01 1 10
unitless

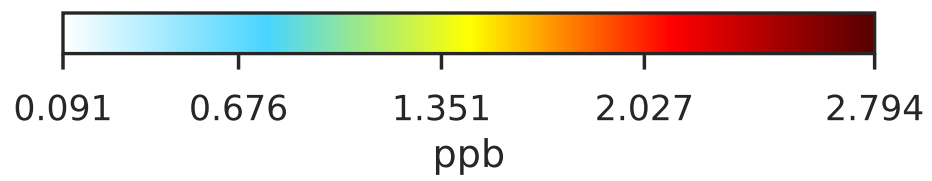
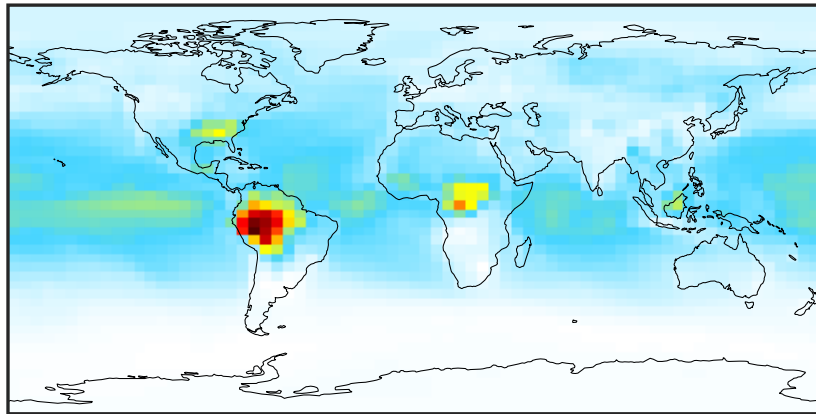
Ratio (1x1.25)
Dev/Ref, Fixed Range



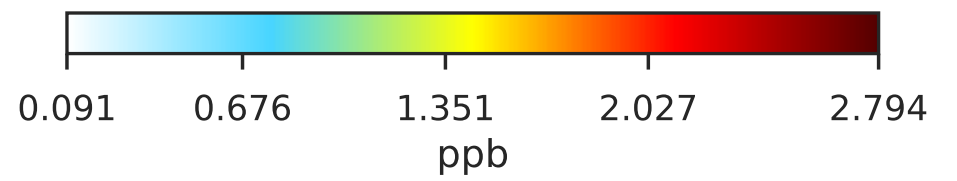
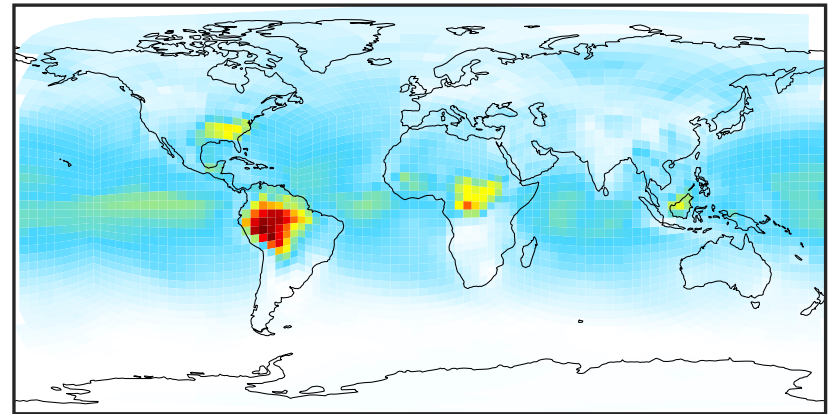
0.50 0.75 1.00 1.50 2.00
unitless

SpeciesConcVV_MP

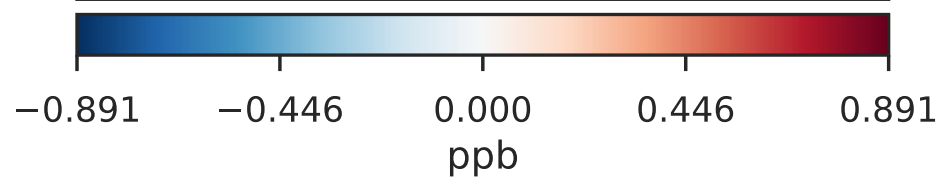
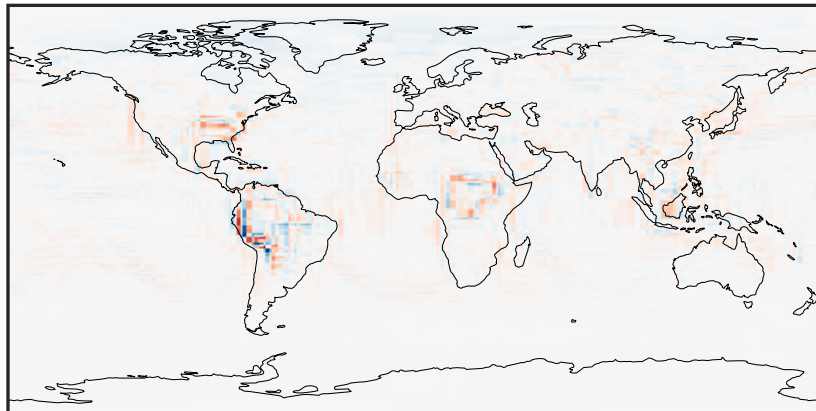
gcc-4x5-1Mon-14.2.0-alpha.20 (Ref)
4.0x5.0



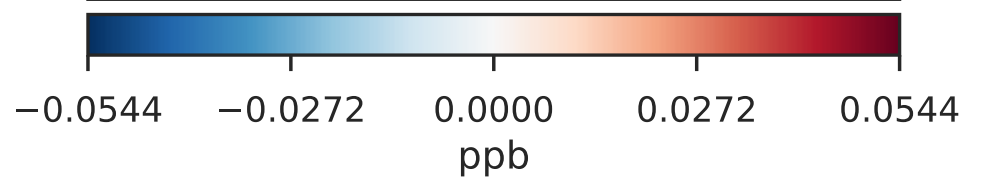
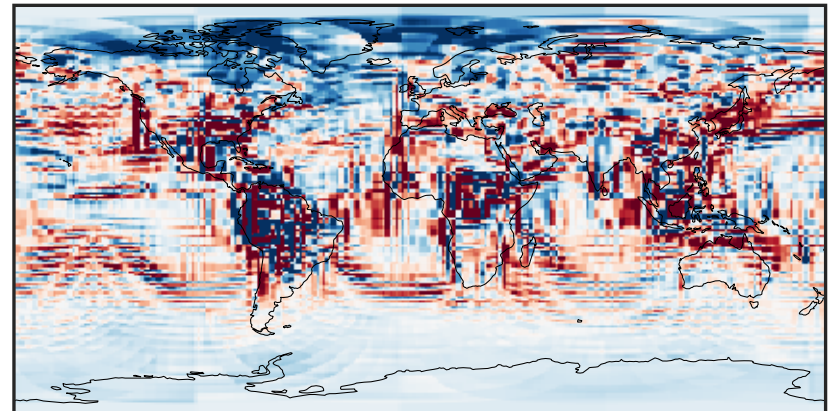
gchp-c24-1Mon-14.2.0-alpha.20 (Dev)
c24



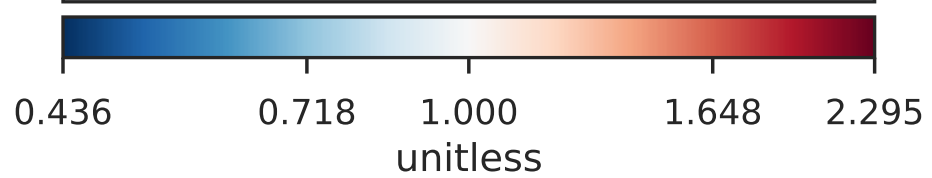
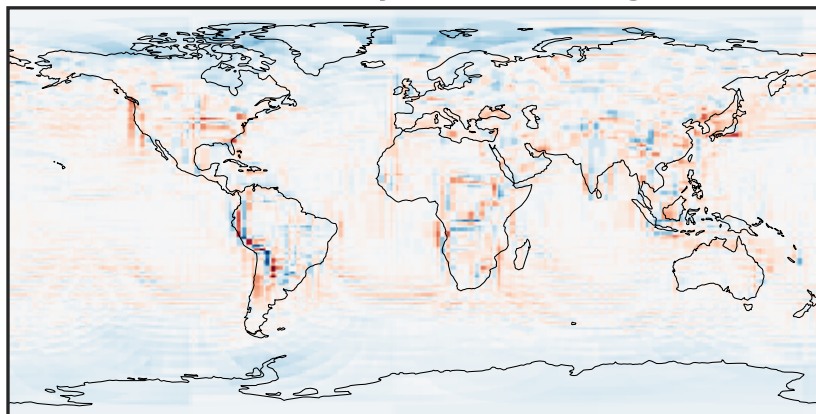
Difference (1x1.25)
Dev - Ref, Dynamic Range



Difference (1x1.25)
Dev - Ref, Restricted Range [5%,95%]



Ratio (1x1.25)
Dev/Ref, Dynamic Range



Ratio (1x1.25)
Dev/Ref, Fixed Range

