

# OWNER OPERATOR'S MANUAL

---

## BCS Buddy Cart 92193040

---

Manual P/N: 6000181  
Revision: 9/2016

---

Distributed by:  
BCS America, LLC  
5001 N Lagoon Avenue  
Portland, OR 97217  
info@bcsamerica.com



Please read and understand this manual and all instructions prior to operating or servicing this attachment.

1-800-543-1040



bcsamerica.com

# Safety Rules



**This is the safety alert symbol. It is used to alert you to potential personal injury hazards. Obey all safety messages that follow this symbol to avoid possible injury or death.**

Read and understand all safety rules and operating instructions before using this attachment.

Follow all safety rules and operating instructions provided by your tractor manual.

Never allow children or untrained persons to operate tractor and attachment.

Reduce tractor speed and allow extra stopping distance when moving heavy loads.

Reduce tractor speed and weight when operating on slopes.

Operate up and down slopes, never across the face of slopes.

Do not carry passengers on tractor or attachment.

Avoid sudden turns or maneuvers.

Do not remove warning decal from product.

Check product for worn, loose, or damaged parts before each use. If any damage is present, repair the product before using.

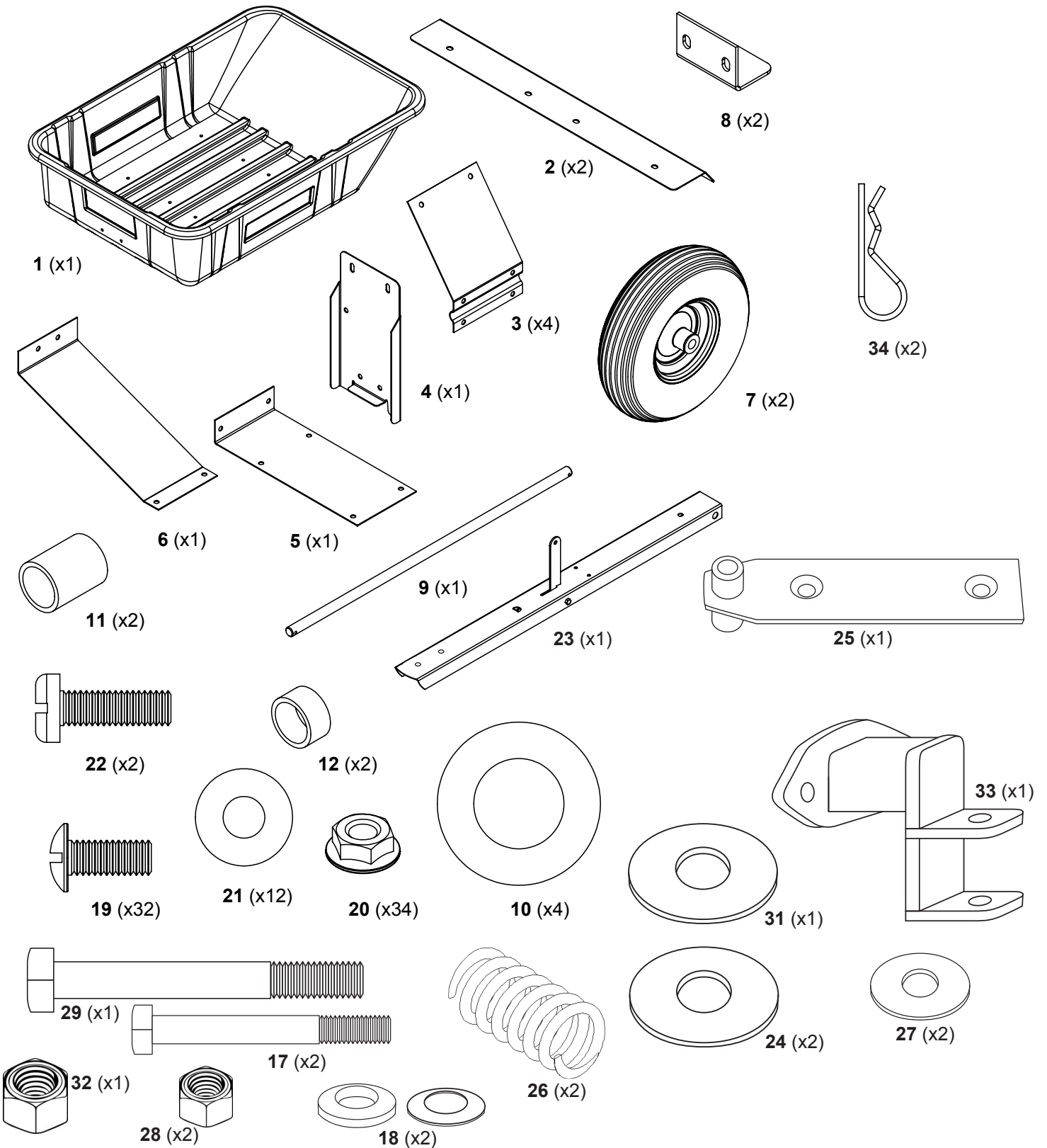
Check product for loose or missing fasteners before each use. Tighten or replace fasteners as needed before using.

Do not exceed tractor speed of 2.8 miles per hour when using Buddy Cart.

Do not exceed Buddy Cart rated weight capacity of 450 pounds.

Do not attempt to disconnect Buddy Cart from tractor with a load.

# Carton Contents



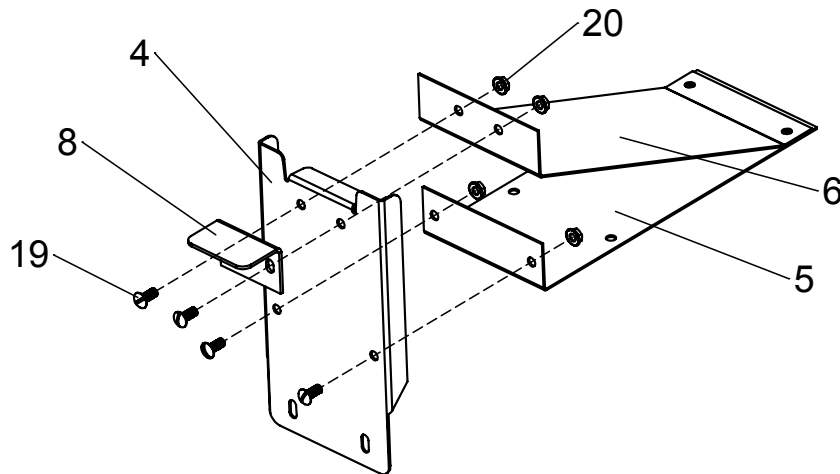
## Tools Required for Assembly:

- Large Flat Screwdriver
- 19mm Wrench
- 1/2" Wrench or Socket
- 15/16" Wrench (qty 2) or Socket

# Assembly Instructions

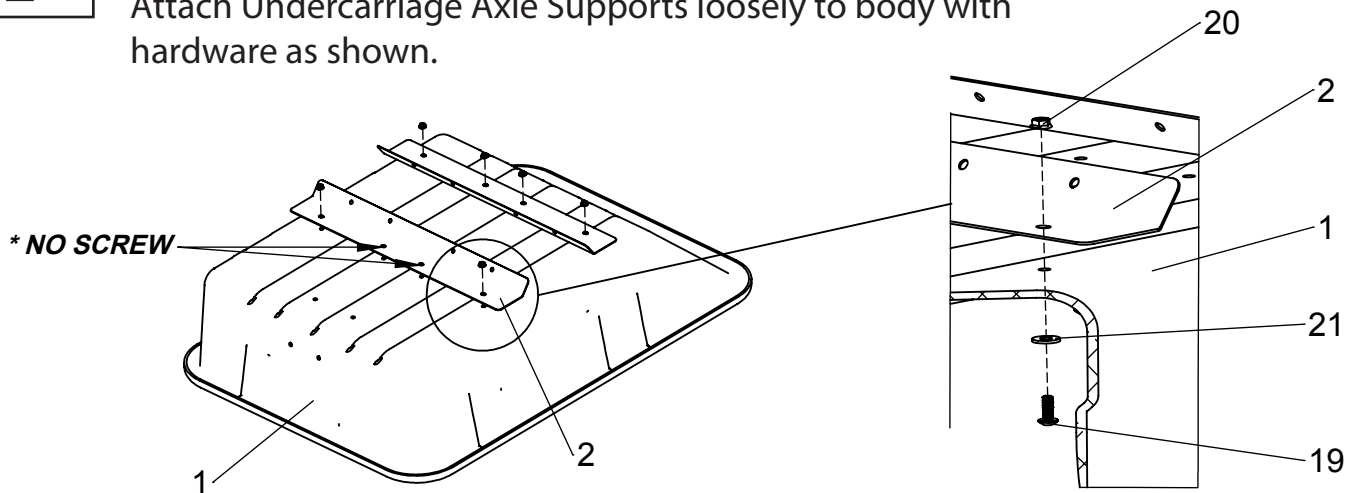
1

Attach Front Support and Latch Angle loosely to Brace Supports as shown using supplied hardware.



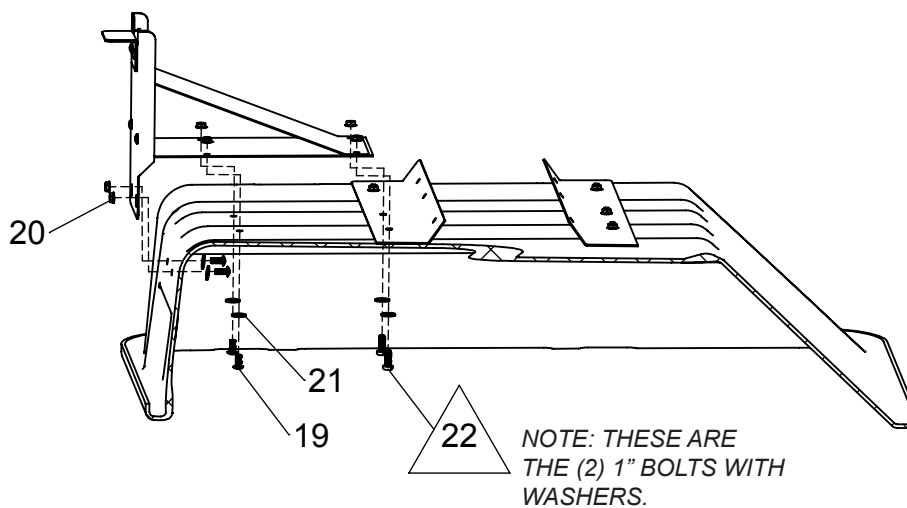
2

Attach Undercarriage Axle Supports loosely to body with hardware as shown.



3

Attach Front Support Assembly loosely to body with hardware as shown.

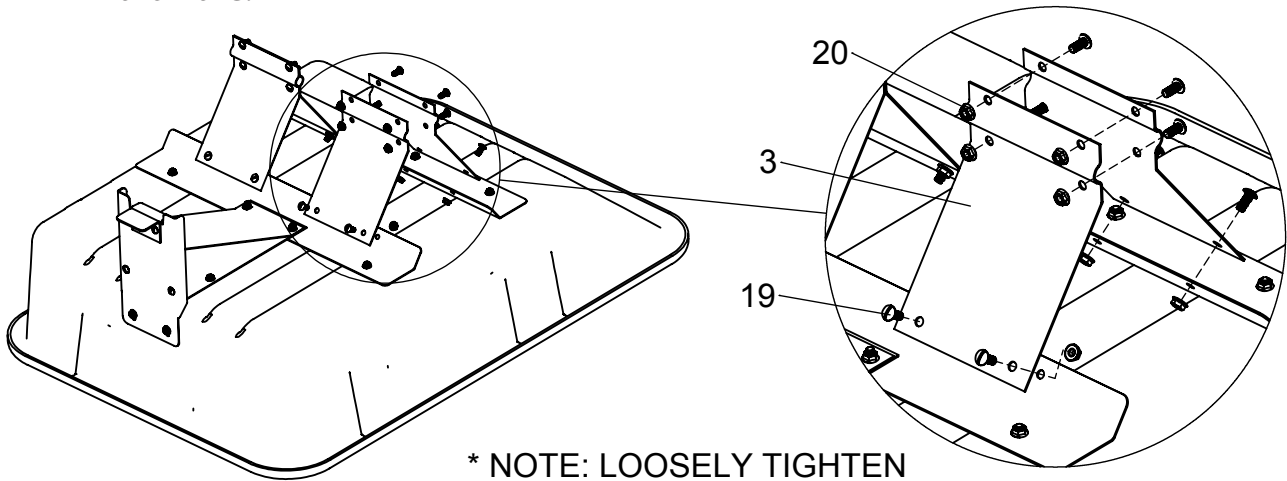


NOTE: THESE ARE THE (2) 1" BOLTS WITH WASHERS.

# Assembly Instructions

**4**

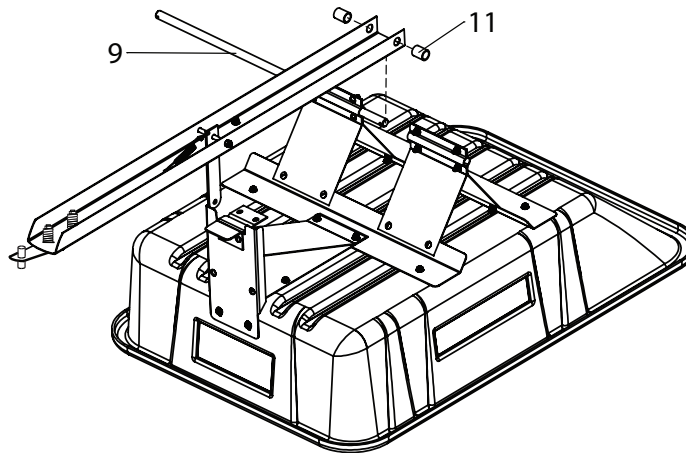
Attach two axle holders to the axle supports as shown using the supplied hardware.



\* NOTE: LOOSELY TIGHTEN BOLTS AT THIS TIME

**5**

Insert axle into undercarriage halfway as shown. Attach spacer, tongue, and spacer.

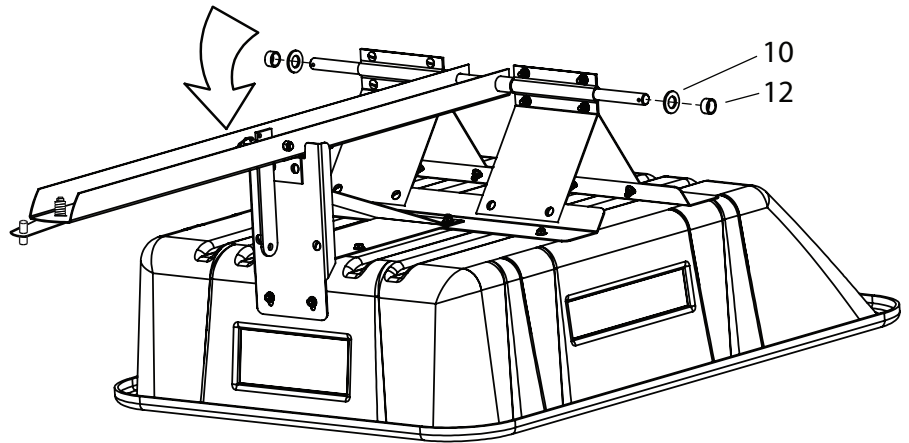


# Assembly Instructions

6

Slide axle completely through undercarriage. Align tongue with the front support and pull handle to latch. Attach washers and spacers as shown.

**\* NOTE: TIGHTEN ALL HARDWARE AT THIS TIME**

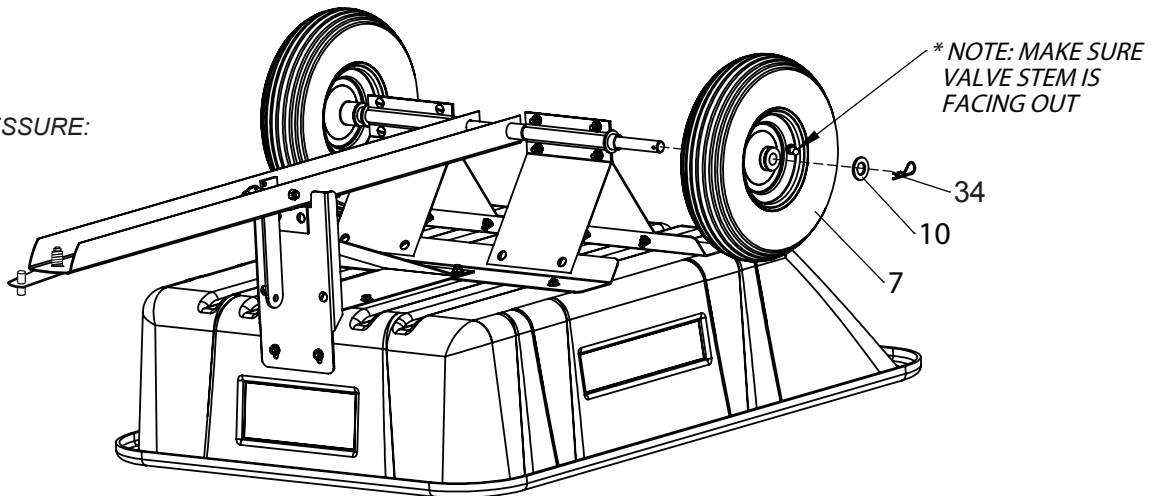


7

Slide wheels and washers onto axle and secure with hairpins as shown.

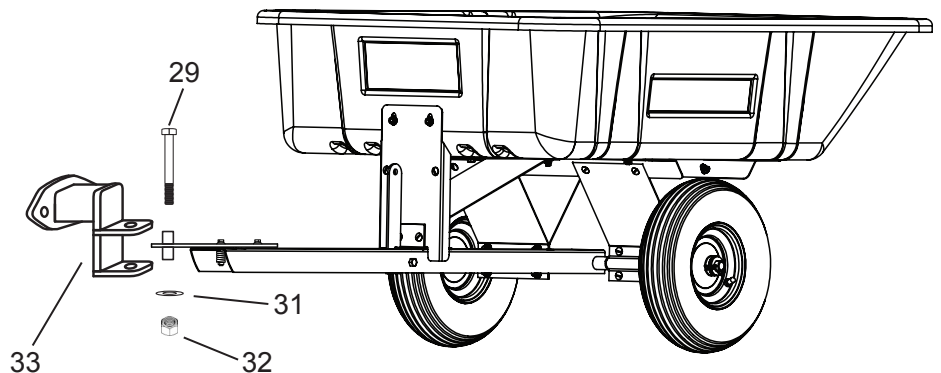
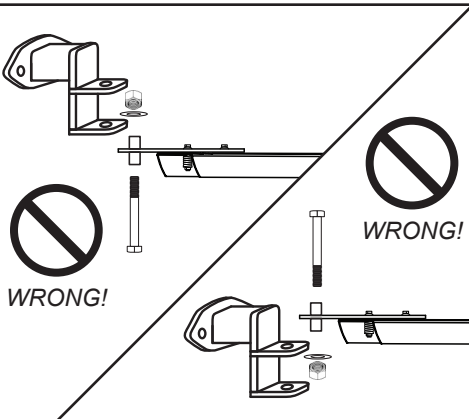


CHECK TIRE PRESSURE:  
30 PSI



8

Install hitch bolt, washer and nut to secure attachment to drop hitch. The attachment can be secured to the drop hitch in one position only.



# Operating Instructions

## Before Using Dump Cart:

1. Check tire pressure and inflate to 30 psi if needed.
2. Read all Safety Rules found on page 1.

## How to Use Buddy Cart:

1. Attach Buddy Cart to your tractor using the supplied drop hitch, bolt, washer and nut.
2. Before loading the Buddy Cart for initial use, allow a few minutes to become familiar with steering the cart while mounted to a BCS tractor. The Buddy Cart requires the operator to assist with maintaining a straight path. **WARNING:** Excessively sharp turns or hurried maneuvering may result in a “jack-knife” effect. If this occurs, engage the tractor’s Reverse and re-position the cart directly in front of the tractor prior to resuming normal operation.
3. Do not exceed 450 pounds when loading material into the cart body.
4. Distribute the weight of the load as evenly as possible in the cart body for best handling.
5. When hauling heavy loads, verify that your tractor has adequate braking capacity.
6. Do not exceed 2.8 miles per hour when transporting Buddy Cart.
7. Do not attempt to disconnect with a load in Buddy Cart

## How to Empty Buddy Cart:

1. Pull hand lever forward to release the latch mechanism.
2. Angle cart body as desired to guide the material to preferred location.
3. Lower the body and guide the latch into the drawbar and relatch.

## Periodic Maintenance:

- Tighten fasteners as needed before each use.
- Check tire pressure before each use.
- Inspect parts for damage and replace if necessary.

# Warranty

If this product fails due to a defect in material or workmanship within 3 YEARS from the date of purchase, we will at our option repair or replace it free of charge. This warranty excludes tires and wheels, which are expendable and become worn during normal use.

This warranty does not cover:

- Repairs necessary because of operator abuse or negligence.
- Equipment used for commercial or rental purposes.
- Paint that is worn or faded due to normal use or exposure.

To arrange for product repair call 1-800-543-1040, or return this product to place of purchase for replacement.

This warranty gives you specific legal rights, and you may also have other rights which may vary from state to state. This warranty applies only while this product is in use in the United States and Canada.

In the space below, record the purchase date of your Buddy Cart.

Model Number: 92193040

Purchase Date: \_\_\_\_\_

Serial Number: \_\_\_\_\_

Keep this Owner's Manual and your receipt in a safe place for future reference.

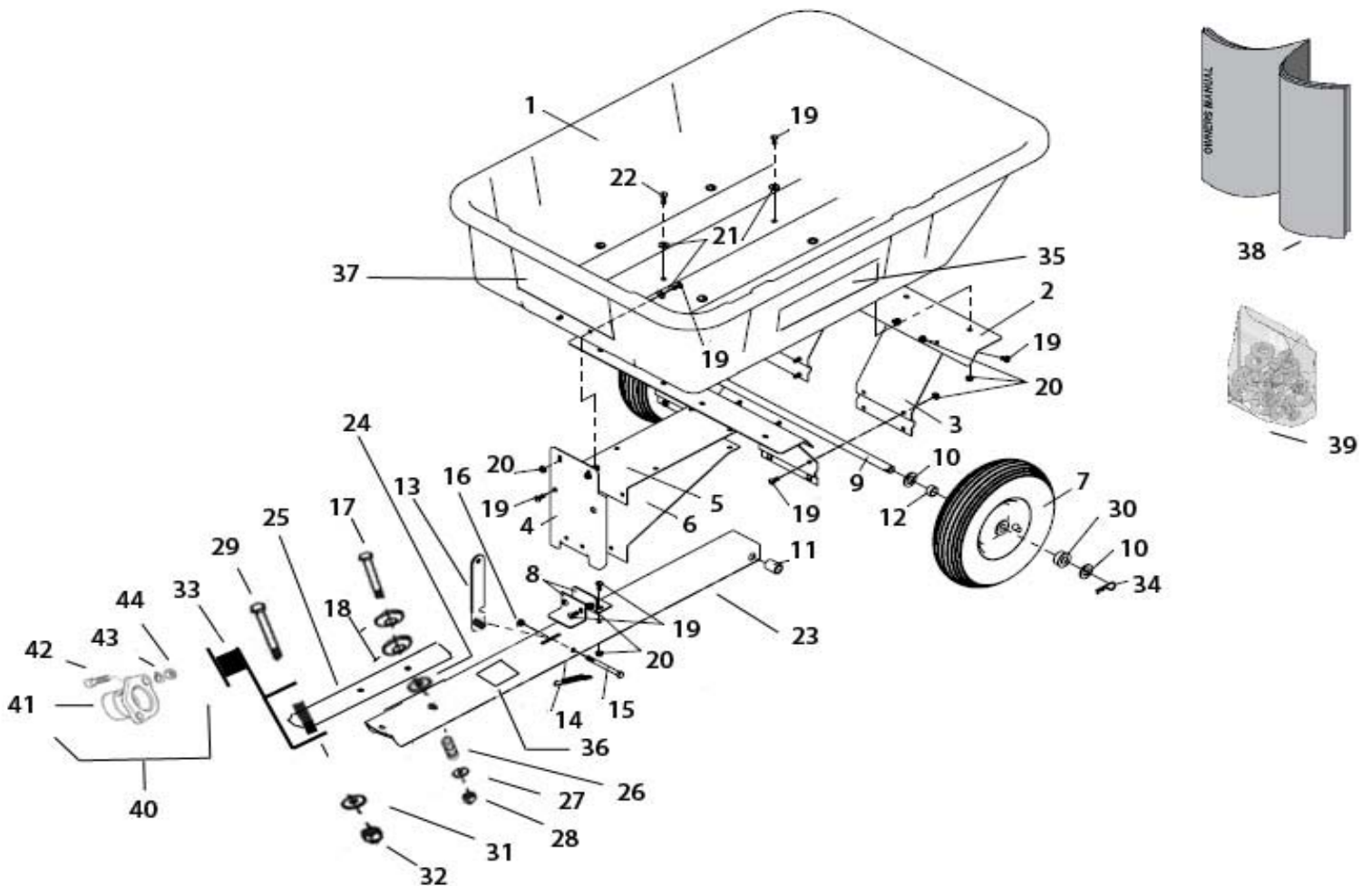
After the three year warranty period, all replacement parts may be ordered by calling 1-800-543-1040.

When ordering replacement parts, always give the following information:

- Product: Buddy Cart
- Model Number: 92193040
- Part Number: \_\_\_\_\_
- Part Description: \_\_\_\_\_



# Illustrated Parts List



ID	PART NO	DESCRIPTION	ID	PART NO	DESCRIPTION
1	6000180	CART BODY	23	6000021	TONGUE
2	6000028	AXLE SUPPORT	24	3000012	1/2 CUSHION WASHER
3	6000029	AXLE HOLDER	25	6000030	TONGUE HITCH
4	6000025	FRONT SUPPORT	26	6000021	TONGUE SPRING
5	6000022	FRONT SUPPORT BRACE	27	3000017	FLAT WASHER 1/2 "
6	6000023	ANGULAR SUPPORT	28	3000024	HEX LOCK NUT 1/2 " -13
7	6000182	WHEEL ( including bushings )	29	3000095	HEX BOLT, HITCH 5/8 " -11 x 4.5 GRADE 8
8	6000024	LATCH ANGLE	30	6000812	KIT 3/4" POLY BUSHINGS ( set of 4 )
9	3000080	AXLE 3/4 "	31	3000036	FLAT WASHER, HITCH 5/8 "
10	3000721	WASHER 3/4 " SAE	32	3000055	LOCK NUT, HITCH 5/8 "-11
11	6000105	SPACER 3/4 " X 1.25 "	33	6000036	DROP HITCH
12	6000106	SPACER 3/4 " X 0.625 "	34	3000084	HAIRPIN
13	4011115	LATCH POST	35	58057723	DECAL ( Logo ) Cart Sides )
14	3001310	SPRING, LATCH	36	58057724	DECAL ( Read Owners Manual )
15	3000053	HEX BOLT 3/8 -16 X 4 "	37	58057715	DECAL (Logo ) Front
16	3000061	HEX LOCK NUT 3/8 - 16	38	6000181	OWNERS MANUAL
17	3000074	HEX BOLT 1/2 - 13 X 3.75 "	39	6000108	HARDWARE BOLT BAG
18	3000065	DRAWBAR SPHERICAL WASHERS			
19	3000054	5/16- 18 X 3/4 " SLOTTED SCREW	40	92257851	MALE TANG KIT Optional (not included)
20	6000418	5/16 - 18 FLANGED GRIP NUT			
21	3000711	WASHER 5/16 USS	41	51357851	MALE TANG
22	3000537	5/16 -18 X 1 " SLOTTED SCREW	42	31152123	SCREW M12 X 45
			43	31423130	WAVY WASHER ,LOCK M12
			44	31241120	NUT,SELF LOCKING M12

