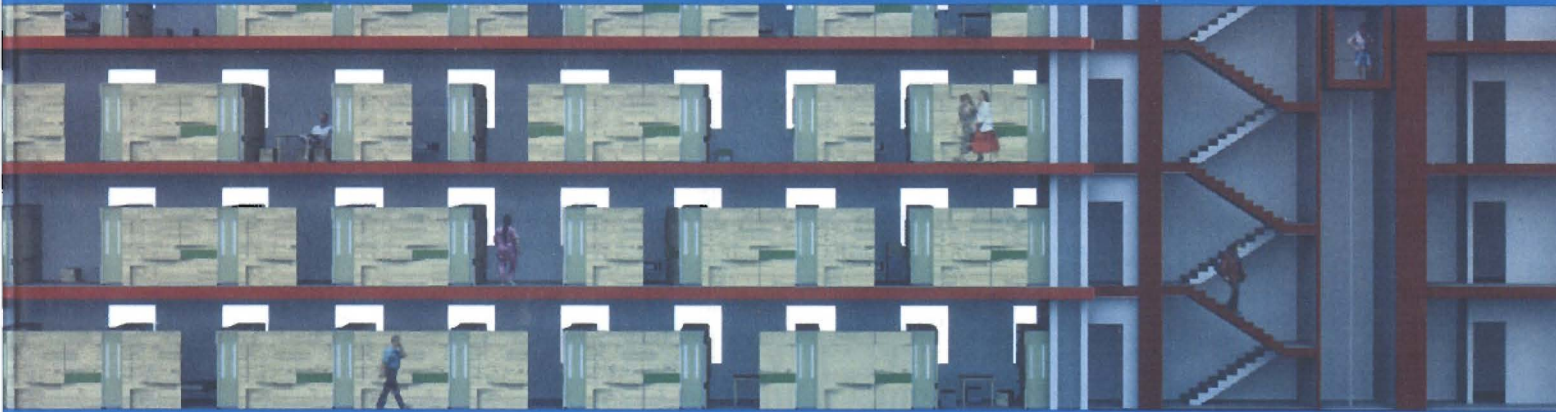


Winter 2003/04

Oculus

A PUBLICATION OF THE AMERICAN INSTITUTE OF ARCHITECTS NEW YORK CHAPTER VOLUME 65 ISSUE 4 \$10



MAKING AFFORDABLE HOUSING POSSIBLE RE-HOUSING HARLEM NON-PROFIT LESSONS AHAB SLEPT HERE HOUSE OF SUN AND SHADOWS

Everything Housing: From Homeless Shelters to Luxury Living

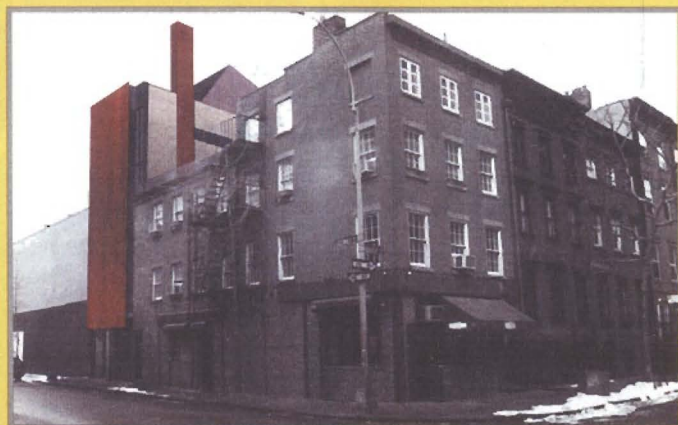
At the intersection of two historic Lower Manhattan districts – one commercial, the other residential – a 17-ton steel plate makes the new façade of a finely detailed townhouse designed by Matthew Baird Design. *By Roger Yee*

A partially demolished Lower Manhattan butcher shop stands where a handsome, 4,700-square-foot, four-story, four-bedroom contemporary house is about to emerge. Dilapidated as the shop is, it's a fitting harbinger for 829 Greenwich Street, designed by Matthew Baird Design to straddle the Greenwich Village Historic District and Gansevoort Meat Market. The residence will acknowledge the site's gritty, commercial heritage and changing prospects with its distinctive front façade: a 40x14-foot-by-1.5 inch, 17-ton Corten steel plate.

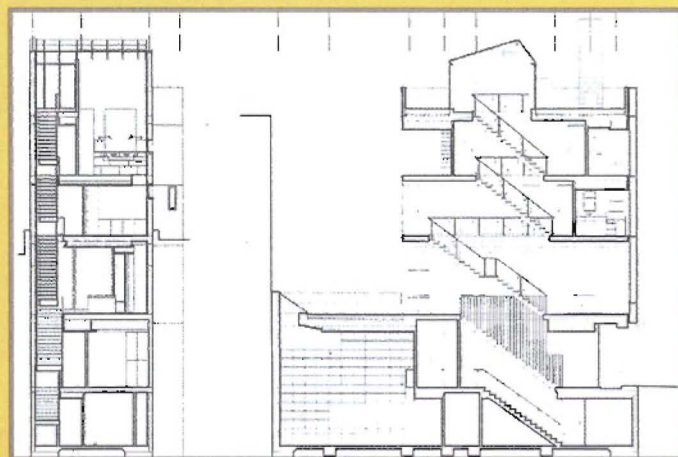
For all its heft, the plate won't dominate the house. In fact, 829 Greenwich should be exceptionally airy, open, and spacious enough to shelter a couple and their two young children in comfort and privacy. The project's intricate form is the result of an urban design by principal Matthew Baird, who served as project architect of the American Museum of Folk Art for Tod Williams Billie Tsien and Associates, and the young staff of the firm he founded in 1999.

The façade recalls Baird's work on the Folk Art museum. Winning approval from the Landmarks Preservation Commission, Greenwich Village Historical Society, and local community board has been another matter, for which Baird enlisted Elyse Quasebarth, an historic preservation consultant. To his surprise, the project has met with little opposition. The robust, industrial-style façade and the residential scale struck reviewers as appropriate symbols of the neighborhoods that converge at the site.

What the inhabitants of the building will experience most, of course, is the refined interior, where space flows unimpeded; daylight and views penetrate the east façade's floor-to-ceiling windows, rooftop and first floor skylights, and open stairwell. Crisply detailed suspended ceilings, finished walls, and smooth wood floors float past each other. The straightforward stacking plan includes a cellar garage and home office, first floor living room, kitchen, and dining room, second floor children's bedrooms, bath, and library, and third floor master bedroom, master bath, and guest bedroom. Where is the steel plate in this picture? Windows lining its vertical edges make its drywall finish appear as detached and weightless as 17 tons of anything can be.



829 Greenwich Street straddles the historic Greenwich Village and Gansevoort Meat Market districts (above). Sections (below).



Architect/Interior Designer: Matthew Baird Design, LLC
Structural Engineer: Severud Associates
Mechanical/Electrical Engineer: Mottola Rini Engineers, P.C.
General Contractor: Alcon Builders Group
Lighting Designer: Renfro Design Group, Inc.

Raising the Iron Curtain