

LA

— CHINA —

景观设计学

LANDSCAPE ARCHITECTURE CHINA

北京大学景观设计学研究院 主编
中国林业出版社 出版

2011 No.1
02月20日

—— 本辑主题 ——

快城市，慢生活——城市慢行景观

Sped Cities, Slowed Lives — Urban Slow Landscape

—— 总第15辑 ——

首尔清溪川复原工程

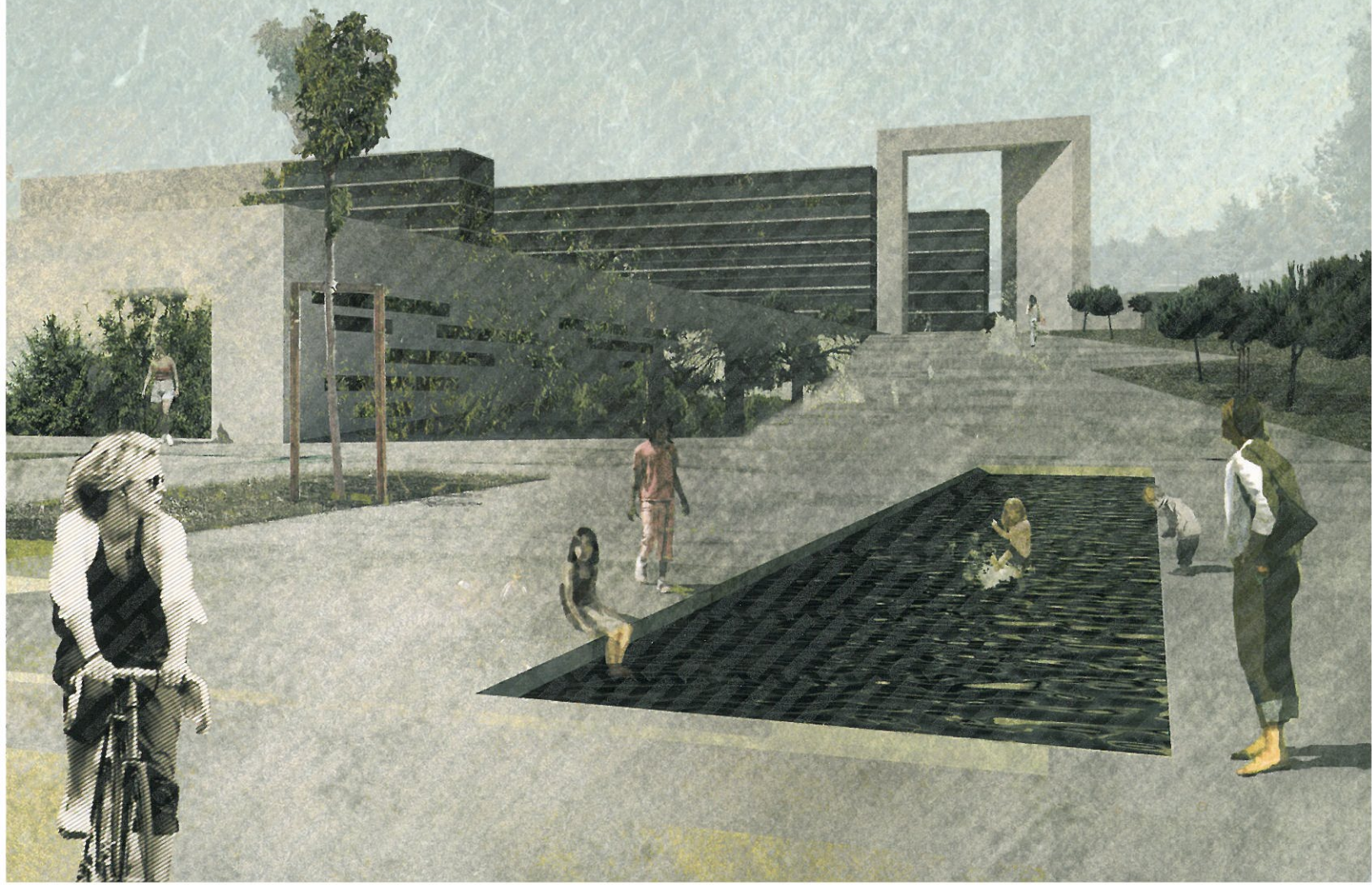
The Restoration of Cheonggyecheon in Seoul

无锡太湖新城慢行交通系统规划

Bicycle and Pedestrian Transportation System
Planning of Taihu Lake Newtown in Wuxi

迈阿密海滩音景观/林肯公园

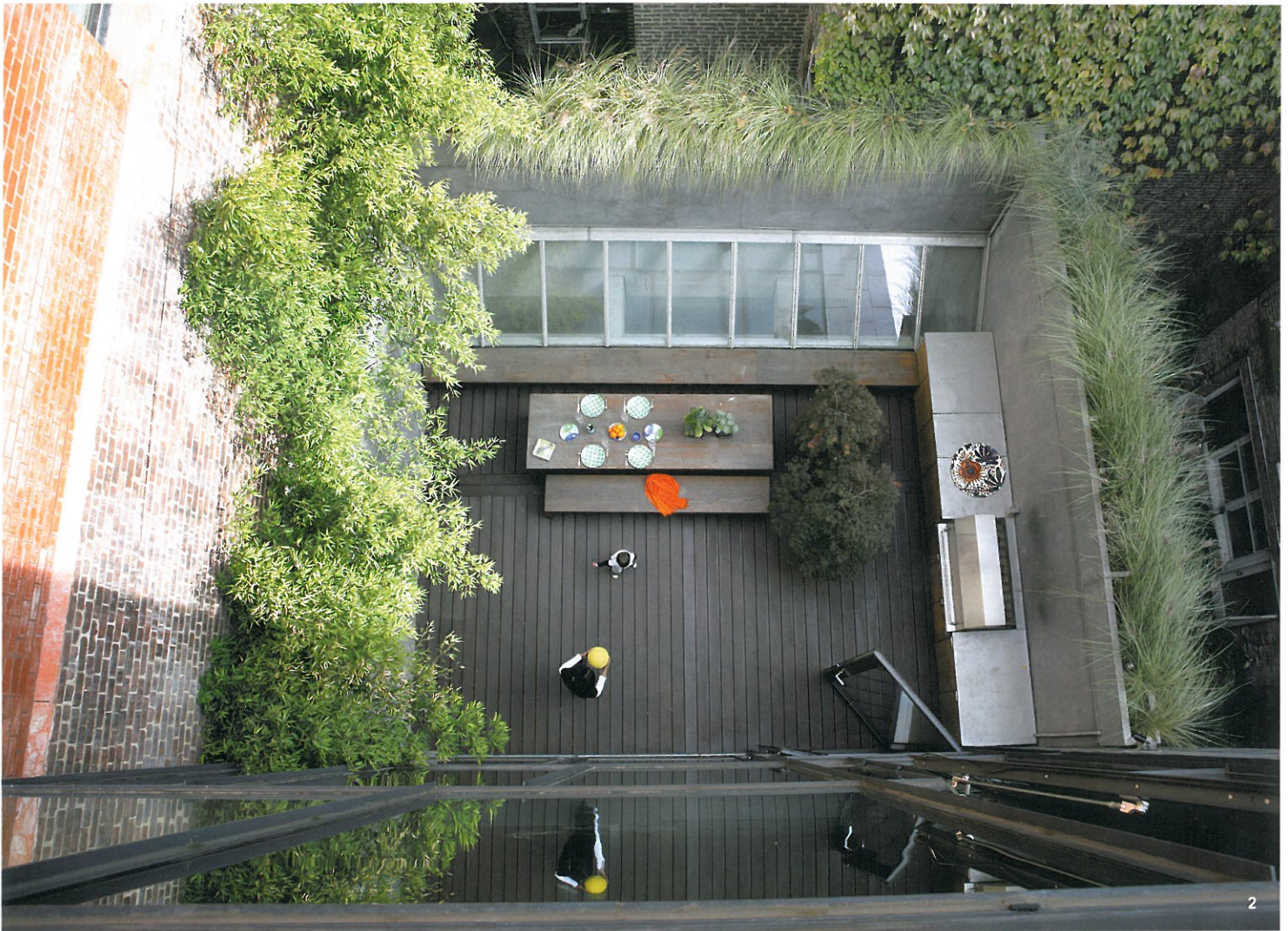
Miami Beach SoundScape / Lincoln Park



纽约格林威治大街别墅
Greenwich Street Townhouse, New York

马修·贝尔德建筑设计工作室 / Matthew Baird Architects





项目地址：美国纽约市
 项目面积：437m²的独立屋
 高级建筑师：马修·贝尔德
 项目建筑师：塔利亚·布罗迪
 项目团队：Miles Nelligan、Coby Linton、Amanda Sachs、
 Robin Blodgett、Caireen O'Hagan
 设计时间：2004年
 建成时间：2006年
 相关信息参见：www.bairdarchitects.com

Location: New York, US
 Area(size): 437m² Single Family Home
 Senior Architect: Matthew Baird
 Project Architect: Thalia Brodie
 Project Team: Miles Nelligan, Coby Linton, Amanda Sachs,
 Robin Blodgett, Caireen O'Hagan
 Design Period: 2004
 Completion Time: 2006
 Website: www.bairdarchitects.com

1. 平台 © Nikolas Koenig
 2. 俯视花园的景象 © Francesca Giovanelli
 3. 楼梯 © Francesca Giovanelli
1. Terrace © Nikolas Koenig
 2. View of garden from above © Francesca Giovanelli
 3. Staircase © Francesca Giovanelli





对于该联排别墅的设计，建筑师和委托人都很明确，即在城市保护最为完好的历史建筑区之一的西村（West Village）中，赋之一种当代简约的设计表达。项目的材质灵感来源于肉品加工区，其粗糙的外缘与内部材料简单而温暖的色调形成了鲜明的对比。对钢板铸造过程的兴趣激发了我们的创意，用一整块钢作为整个立面，可以用卡车托起，并用螺栓固定到场地中，这大约一天就可以完成。

在内部，沉重且不透明的立面营造出私密的氛围，地面到天花板的转角玻璃窗使之具有了一种围合感。透过玻璃窗，可以观赏到格林威治大街的景致。在这个私密的外立面上，房子朝东设有一个3层的幕墙。阳光透过屋顶天窗的砖孔投射下来，让屋内如沐金色春光。细致的设计处理使楼梯一直轻盈地延展到入口处，提高了底层的透光性。■（李云圣译，周明艳校）

For the design of this townhouse the architects and clients were after a decidedly contemporary reductive expression to be built in the midst of one of the City's most protected historic building district, the West Village. The materiality of this project was inspired by the rough edged meat-packing district contrasted with a warm and simple palette of materials at the interior. Our interest in prefabrication inspired an idea to make the entire facade out of a single piece of steel that could be lifted from a truck and bolted into place, presumably in a single day.

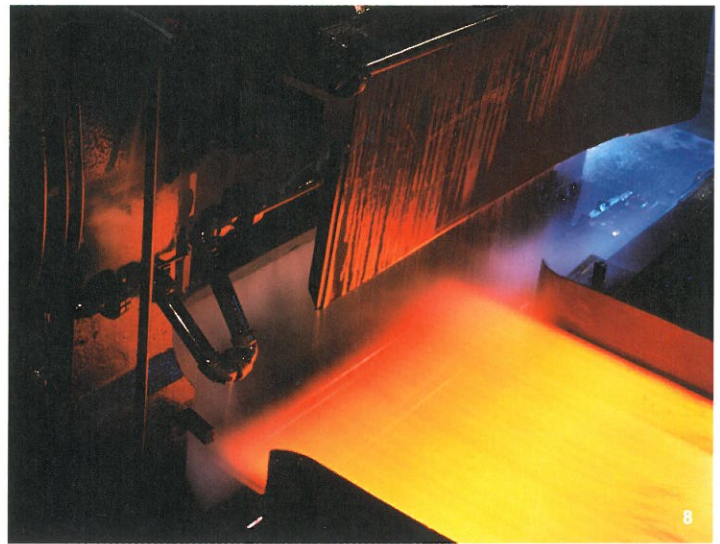
At the interior the heavy opaque front façade provides a sense of privacy and enclosure framed with floor to ceiling corner-glazed windows, which provide views up and down Greenwich Street. From this private front, the house opens itself to the East with a fully glazed three-story curtain wall. The interior of this house is awash in a glow of top light that filters down through apertures in the slabs from a massive clerestory skylight at the roof. The stairs are detailed to float in their openings to enhance the passage of light to the lower floors. ■（Translated by Yunsheng LI, Proofread by Mingyan ZHOU）



4. 从格林威治大街看别墅的景致 © Elizabeth Felicella
5. 别墅的入口处 © Elizabeth Felicella
6. 从下面仰视玻璃幕墙 © Elizabeth Felicella
7. 铸造过程——熔化的铸块压转至轧机。© Matthew Baird Architects
8. 铸造过程——将长度约为12m的熔融钢板在垂直方向的误差控制为4cm之内。© Matthew Baird Architects
9. 用腐蚀的钢板重新打造成建筑物的外立面。© Matthew Baird Architects
10. 安装——将钢板运送到场地，安装钢板共用了45分钟。© Matthew Baird Architects
4. View of house from the Greenwich Street © Elizabeth Felicella
5. Entrance of the house © Elizabeth Felicella
6. View of the curtain wall from bottom © Elizabeth Felicella
7. Fabrication — Molten Ingot is transferred to rolling mill. © Matthew Baird Architects
8. Fabrication — Molten Plate rolled to tolerances within 1/16" of plumb over forty feet in length. © Matthew Baird Architects
9. Use of Recycled weathering steel plate as a pre-fabricated facade. © Matthew Baird Architects
10. Assembly — Steel plate is craned into place. Total time to install: 45 minutes. © Matthew Baird Architects



7



8



9



10