



# Wheel Warranty Conditions



<b>COVERED</b> Warranty Conditions	<b>NOT COVERED</b> Warranty Conditions
<p><b>PAINT (1-Year):</b></p> <ul style="list-style-type: none"><li>• Corrosion</li><li>• Clear Coat Peeling</li><li>• Chrome/Galvanized Corrosion</li></ul> <p><b>CONSTRUCTION:</b></p> <ul style="list-style-type: none"><li>• Pinhole Leak</li><li>• Nonconforming Weld</li></ul> <p><b>OTHER:</b></p> <ul style="list-style-type: none"><li>• Aluminum Lifetime Structural Warranty<ul style="list-style-type: none"><li>○ Under intended use</li></ul></li><li>• Steel 1-Year Structural Warranty<ul style="list-style-type: none"><li>○ Under intended use</li></ul></li></ul>	<p><b>ROAD HAZARDS:</b></p> <ul style="list-style-type: none"><li>• Curbing</li><li>• Bent</li><li>• Impact Damage</li><li>• Tire Ran Underinflated to Destruction</li></ul> <p><b>DAMAGE:</b></p> <ul style="list-style-type: none"><li>• Improper Repair</li><li>• Modification</li><li>• Mounting Damage</li><li>• Chemical Contamination</li><li>• Fire Damage</li><li>• Vandalism</li></ul> <p><b>OTHER:</b></p> <ul style="list-style-type: none"><li>• Cannot Balance</li><li>• Over 1-year for appearance</li><li>• Over 1-year for steel structural</li><li>• Unit Damages (Fender, Structure, Cargo, etc.)</li></ul>

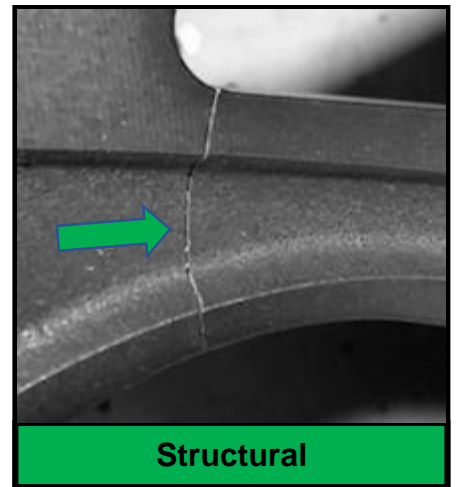
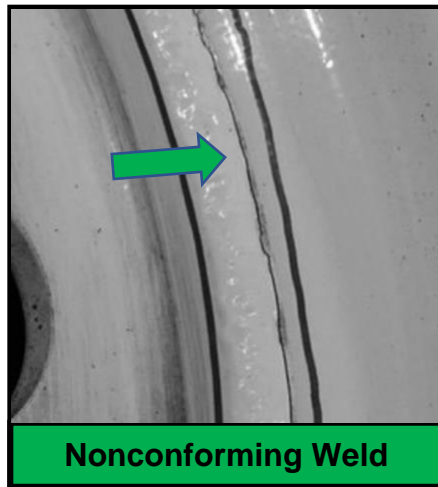
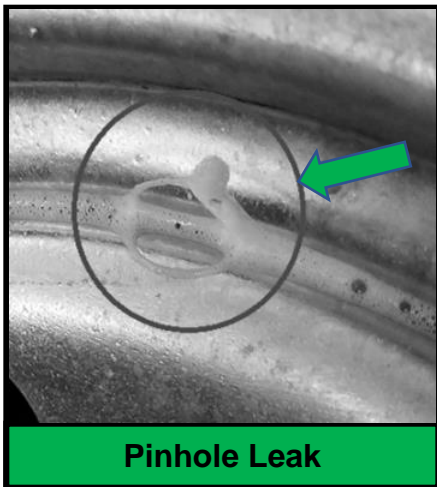
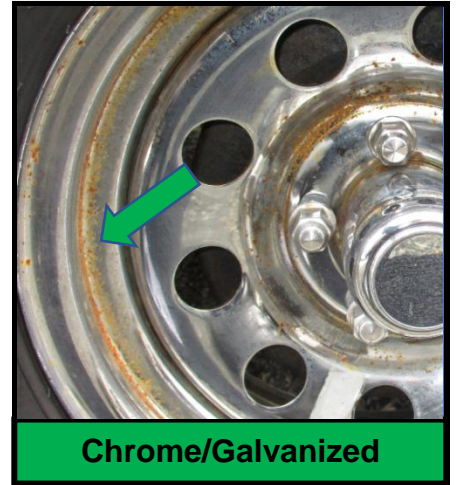
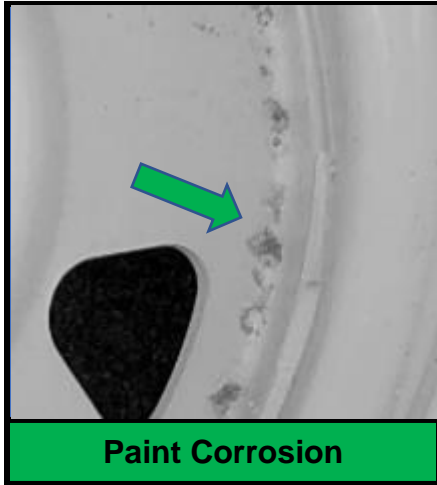
**IMPORTANT:** The adjustment process does not involve the kind of analysis necessary to determine the existence of a covered warranty condition. The conditions shown are for illustration only and should not be considered as proof of workmanship or material condition. A wheel may be adjusted for a condition that may have resulted from one of many possible causes. Neither the presence of a condition nor the fact that a wheel is adjusted for a condition establishes that a problem exists in the wheel.



# Wheel Warranty Conditions



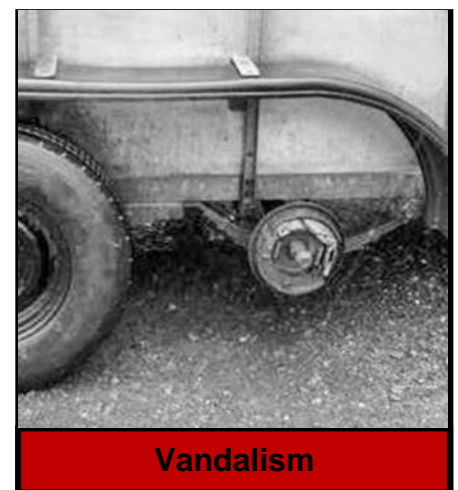
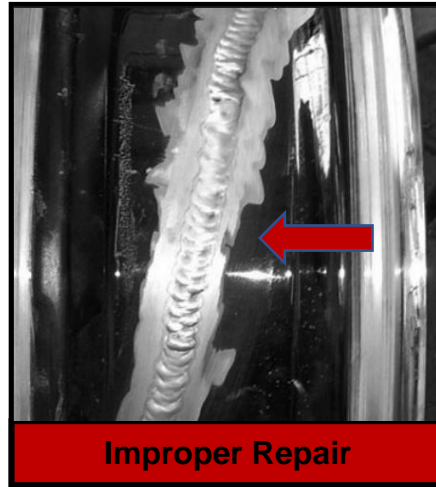
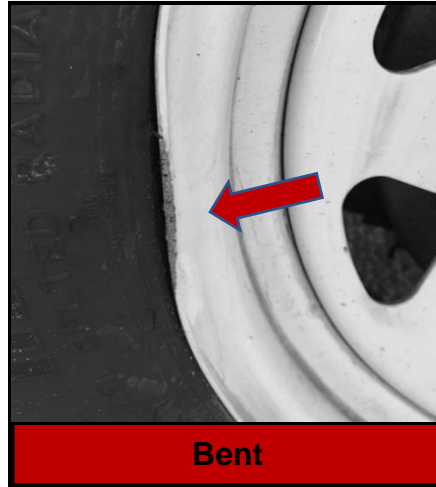
## COVERED



**IMPORTANT:** The adjustment process does not involve the kind of analysis necessary to determine the existence of a covered warranty condition. The conditions shown are for illustration only and should not be considered as proof of workmanship or material condition. A wheel may be adjusted for a condition that may have resulted from one of many possible causes. Neither the presence of a condition nor the fact that a wheel is adjusted for a condition establishes that a problem exists in the wheel.

Rev 03/19

## NOT COVERED



**IMPORTANT:** The adjustment process does not involve the kind of analysis necessary to determine the existence of a covered warranty condition. The conditions shown are for illustration only and should not be considered as proof of workmanship or material condition. A wheel may be adjusted for a condition that may have resulted from one of many possible causes. Neither the presence of a condition nor the fact that a wheel is adjusted for a condition establishes that a problem exists in the wheel.