



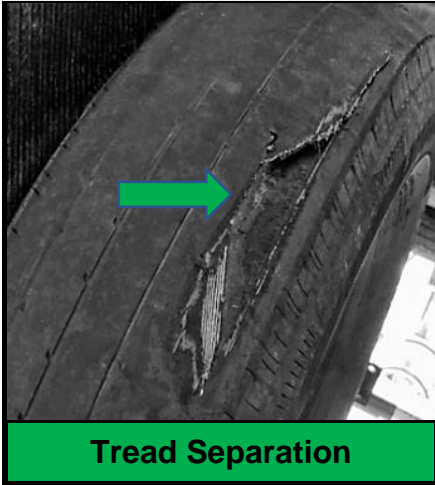
# Tire Warranty Conditions



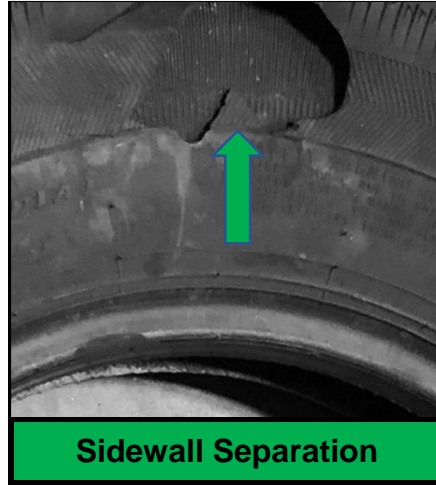
<b>COVERED</b> Warranty Conditions	<b>NOT COVERED</b> Warranty Conditions
<p><b>TREAD:</b></p> <ul style="list-style-type: none"> <li>• Tread Separation</li> </ul> <p><b>SIDEWALL:</b></p> <ul style="list-style-type: none"> <li>• Shoulder Cracking</li> <li>• Sidewall Separation</li> <li>• Spread Ply</li> </ul> <p><b>BEAD:</b></p> <ul style="list-style-type: none"> <li>• Circumferential Bead Cracking</li> <li>• Migrating Bead Wire</li> <li>• Bead Area Separation</li> </ul> <p><b>LINER:</b></p> <ul style="list-style-type: none"> <li>• Trapped Air in Liner over 0.25 inch</li> <li>• Liner Crack</li> <li>• Thin Liner</li> <li>• Open Liner Splice</li> </ul> <p><b>OTHER:</b></p> <ul style="list-style-type: none"> <li>• Light/thin Rubber</li> <li>• Foreign Material</li> <li>• Vibration before the first 10% of treadwear</li> <li>• Weather Checking (2 years from date of purchase)</li> </ul>	<p><b>ROAD HAZARDS:</b></p> <ul style="list-style-type: none"> <li>• Sidewall Cut</li> <li>• Curbing (Sidewall or Shoulder)</li> <li>• Bubble in Sidewall</li> <li>• Puncture Beyond Repairable Limits</li> <li>• Impact Break in Liner</li> <li>• Impact Break Across Tread</li> <li>• Cut Tread</li> <li>• Ran Underinflated to Destruction</li> </ul> <p><b>IRREGULAR WEAR:</b></p> <ul style="list-style-type: none"> <li>• Heel and Toe Wear</li> <li>• Diagonal Wipe Wear</li> <li>• Depressed Rib Wear</li> <li>• Erosion Wear</li> <li>• Fast Centerline Wear</li> <li>• 360* One-Side Shoulder Wear</li> <li>• 360* Both Side Shoulder Wear</li> <li>• Hi-low Lug Wear</li> </ul> <p><b>DAMAGE:</b></p> <ul style="list-style-type: none"> <li>• Improper Repair</li> <li>• Sealants/Fillers/Balancing Materials</li> <li>• Modification of Tire (Grooving, Decorative Sidewall, etc)</li> <li>• Mounting Damage</li> <li>• Chemical Contamination</li> <li>• Fire Damage</li> <li>• Vandalism</li> <li>• Bead Break</li> <li>• Brake Skid</li> <li>• Ran-Flat</li> <li>• Fabric Fatigue/Zipper Break</li> </ul> <p><b>OTHER:</b></p> <ul style="list-style-type: none"> <li>• Vibration after the first 10% of treadwear</li> <li>• Weather Checking after 2 years</li> <li>• Noise</li> <li>• Beyond Warranty Age Limit</li> <li>• Cannot Balance</li> <li>• Unit Damages (Fender, Structure, Cargo, etc.)</li> </ul>

**IMPORTANT:** The adjustment process does not involve the kind of analysis necessary to determine the existence of a covered warranty condition. The conditions shown are for illustration only and should not be considered as proof of workmanship or material condition. A tire may be adjusted for a condition that may have resulted from one of many possible causes. Neither the presence of a condition nor the fact that a tire is adjusted for a condition establishes that a problem exists in the tire.

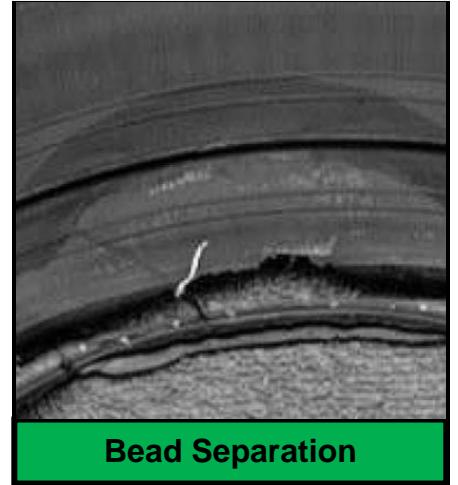
## COVERED



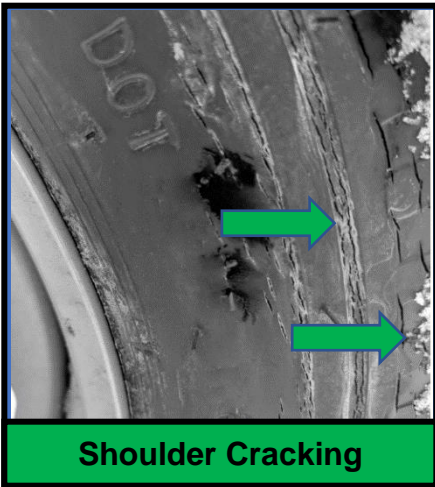
Tread Separation



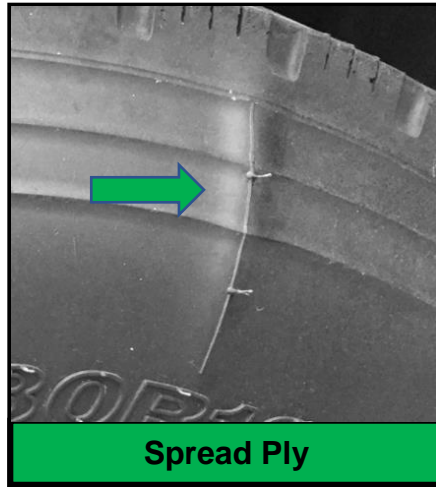
Sidewall Separation



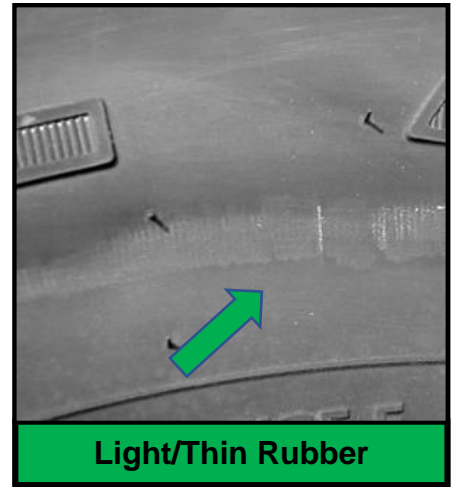
Bead Separation



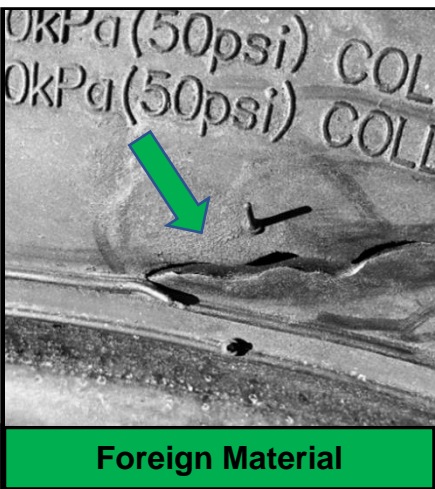
Shoulder Cracking



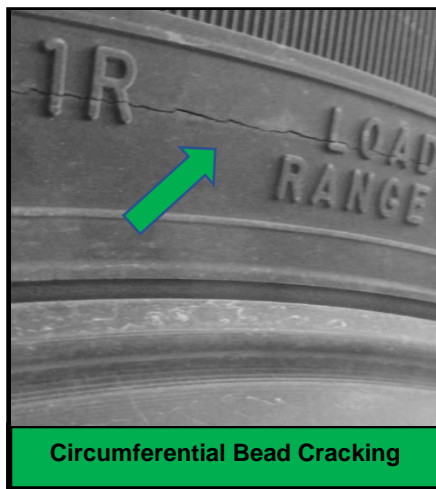
Spread Ply



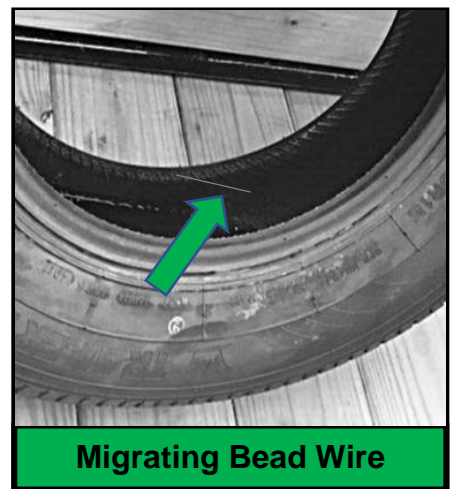
Light/Thin Rubber



Foreign Material



Circumferential Bead Cracking



Migrating Bead Wire

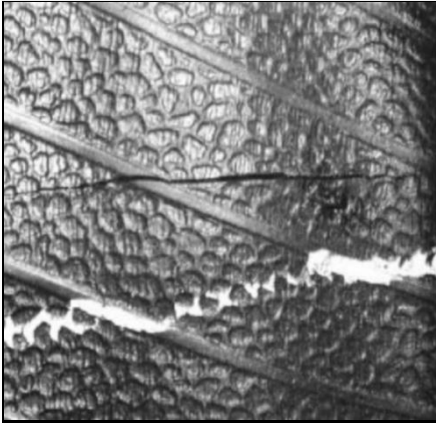
**IMPORTANT:** The adjustment process does not involve the kind of analysis necessary to determine the existence of a covered warranty condition. The conditions shown are for illustration only and should not be considered as proof of workmanship or material condition. A tire may be adjusted for a condition that may have resulted from one of many possible causes. Neither the presence of a condition nor the fact that a tire is adjusted for a condition establishes that a problem exists in the tire.



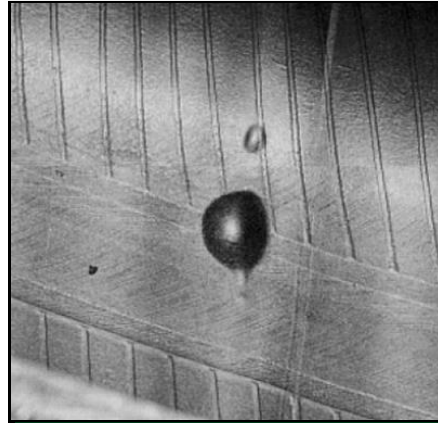
# Tire Warranty Conditions



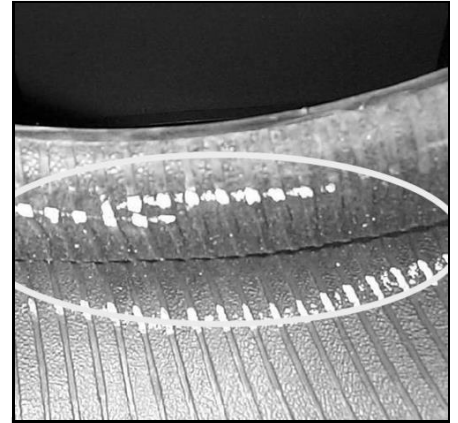
## COVERED



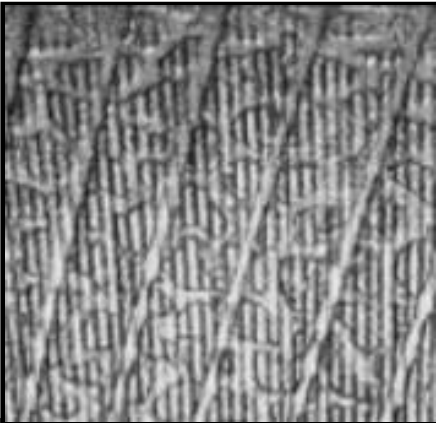
**Open Liner Splice**



**Trapped Air in Liner Over 0.25 in**



**Liner Crack**

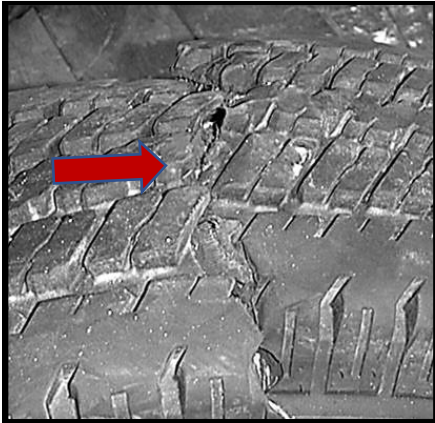


**Thin Liner**

**IMPORTANT:** The adjustment process does not involve the kind of analysis necessary to determine the existence of a covered warranty condition. The conditions shown are for illustration only and should not be considered as proof of workmanship or material condition. A tire may be adjusted for a condition that may have resulted from one of many possible causes. Neither the presence of a condition nor the fact that a tire is adjusted for a condition establishes that a problem exists in the tire.

# Tire Warranty Conditions

## NOT COVERED



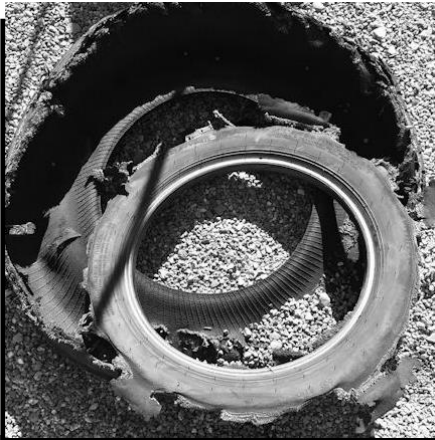
**Impact Break - Tread**



**Impact Break - Sidewall**



**Puncture Beyond Repair**



**Ran Underinflated to Destruction**



**Cut Sidewall or Tread**



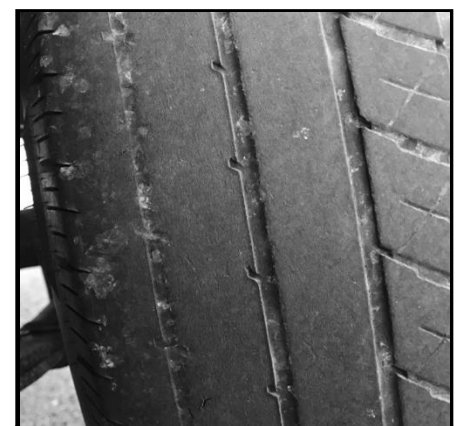
**Irregular Wear**



**Diagonal Wipe**



**Fast Centerline Wear**



**Fast Shoulder Wear**

## NOT COVERED

